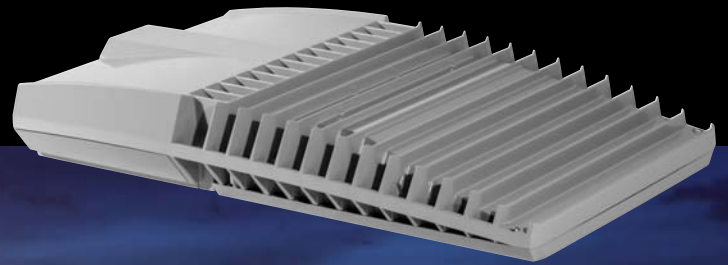


Easy on the eyes. Easy on the wallet.

High-output, low-cost roadway lighting with virtually no glare.

TRIBORO® XL



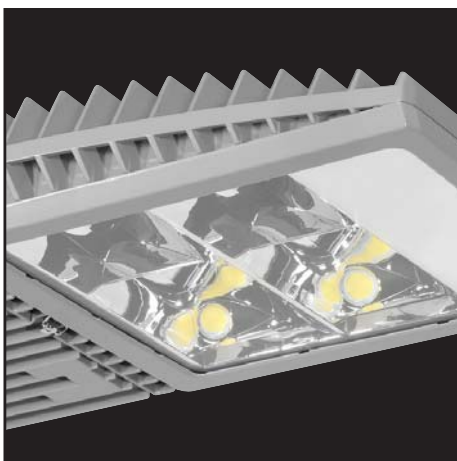
Visit rabweb.com to see
which models are DLC or
DLC Premium listed.

RAB | Outdoor

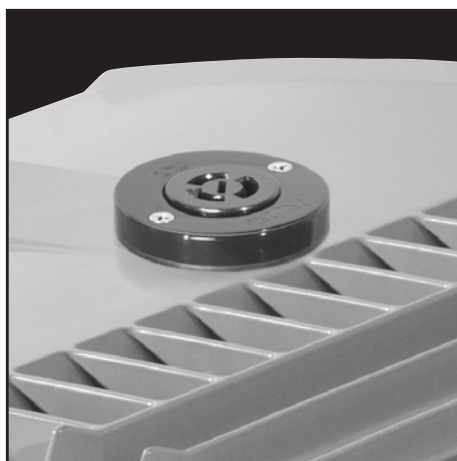
TRIBORO® XL



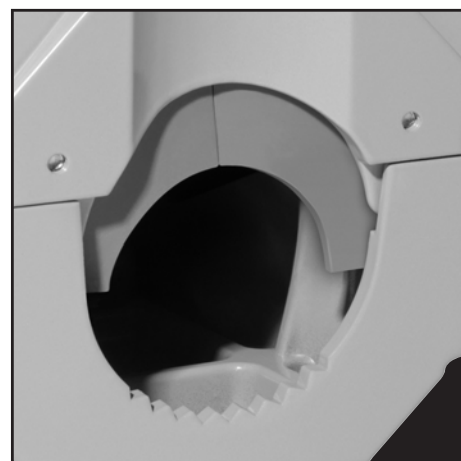
- Replace up to 400W HPS roadway lights, saving up to \$142 annually per fixture
- Superior optical distribution
- Tool-less entry for easy maintenance and installation
- ANSI C136.41 7-Pin receptacle, compatible with wireless control systems
- Available in IES Type II, III and IV distributions
- Featuring industry-leading, best-in-class 5G vibration rating
- 100,000-Hour LED lifespan



Superior optical design ensures optimal light distribution, keeping light where it's needed most.



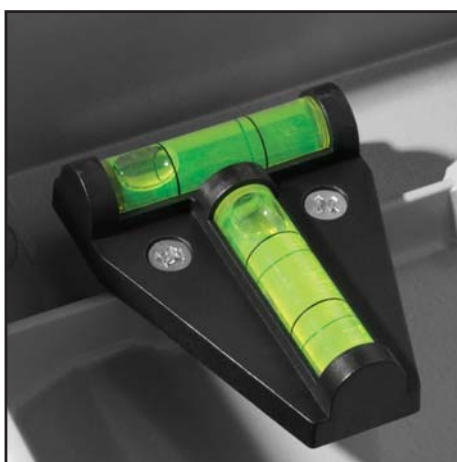
Standard 7-Pin socket supports future expansion to wireless controls and smart city strategies.



Accommodates 1 5/16" - 2 3/8" OD (1", 1 1/4", 1 1/2", 2" NPS) tenon for optimal mounting versatility.



External "Airflow" fins provide superior heat dissipation and thermal management to extend LED lifespan.



Integrated "T" level makes installation that much easier.

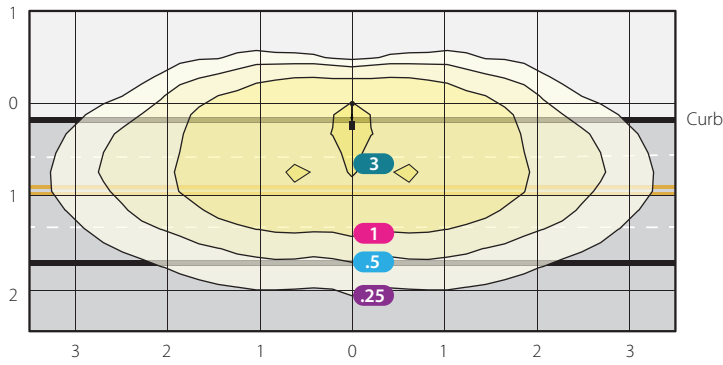


Optional twistlock photocell for 120-277 or 480V.

TRIBORO XL- 240W

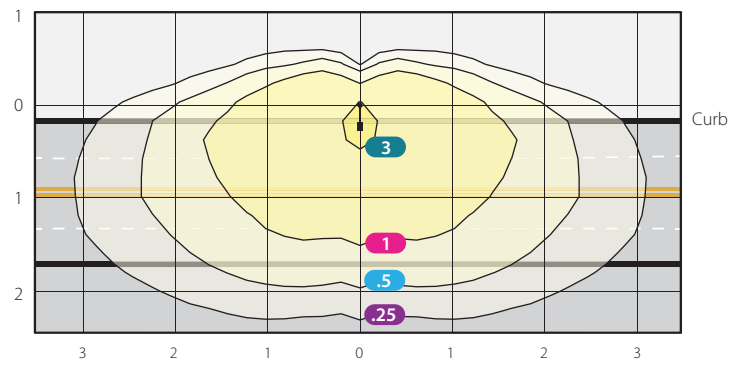
Type II - 40 ft mounting height

Photometric Report: RAB03530



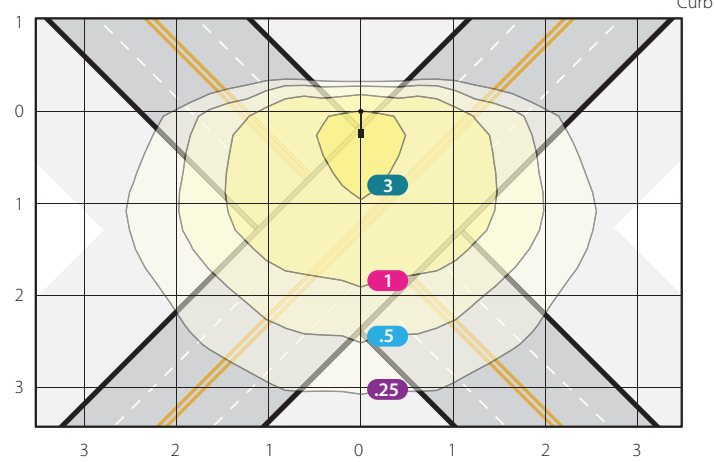
Type III - 40 ft mounting height

Photometric Report: RAB03650



Type IV - 40 ft mounting height

Photometric Report: RAB03649



Mounting Height	Multiplier
25	3.1
30	2.0
35	1.4
40	1.0

Grid scales: Multiples of mounting height Values shown in footcandles

Watts	Lumens Based on 3000K CCT @ 120Vac			Avg Lumens Across All Dist Types
	Type IV	Type III	Type II	
100	13,136	13,033	13,329	13,166
150	18,623	18,477	18,897	18,666
240	26,826	26,615	27,220	26,877

Ordering information

Product Family	Distribution	Wattage	Color Temperature	Finish	Driver Options	Photocell Options
<div style="border: 1px solid black; padding: 5px; text-align: center;">TBLED</div>	<div style="border: 1px solid black; width: 40px; height: 40px; margin: 0 auto;"></div>	<div style="border: 1px solid black; width: 40px; height: 40px; margin: 0 auto;"></div>	<div style="border: 1px solid black; width: 40px; height: 40px; margin: 0 auto;"></div>	<div style="border: 1px solid black; padding: 5px; text-align: center;">RG</div>	<div style="border: 1px solid black; width: 40px; height: 40px; margin: 0 auto;"></div>	<div style="border: 1px solid black; width: 40px; height: 40px; margin: 0 auto;"></div>
2T Type II 3T Type III 4T Type IV	240 240W 150 150W 100 100W	Blank 5000K N 4000K Y 3000K	RG Roadway Gray	/D10 0-10V Dimming /480/D10 480V 0-10V Dimming	/PCT4 480V Twistlock photocell /7PR 7 Pin Receptacle (standard) /7PR/PCT 7 Pin Receptacle w/ 120-277V Twistlock Photocell	

Specifications

TRIBORO XL 240W - Replaces up to 400W HPS

TBLED4T240

Color Temp	5000K	4000K	3000K
Input Watts	236	237	237
Output Lumens	27,379	27,889	26,826
Lumens Per Watt	116	117	113
Color Accuracy (CRI)	70	71	70

TBLED3T240

Color Temp	5000K	4000K	3000K
Input Watts	235	236	235
Output Lumens	27,164	27,680	26,615
Lumens Per Watt	115	117	113
Color Accuracy (CRI)	70	71	70

TBLED2T240

Color Temp	5000K	4000K	3000K
Input Watts	234	235	234
Output Lumens	27,781	28,309	27,220
Lumens Per Watt	119	120	116
Color Accuracy (CRI)	70	71	70

TRIBORO XL 150W - Replaces up to 400W HPS

TBLED4T150

Color Temp	5000K	4000K	3000K
Input Watts	154	154	154
Output Lumens	19,007	19,368	18,623
Lumens Per Watt	124	126	121
Color Accuracy (CRI)	70	71	70

TBLED3T150

Color Temp	5000K	4000K	3000K
Input Watts	153	153	153
Output Lumens	18,858	19,216	18,477
Lumens Per Watt	123	125	121
Color Accuracy (CRI)	70	71	70

TBLED2T150

Color Temp	5000K	4000K	3000K
Input Watts	152	152	152
Output Lumens	19,286	19,653	18,897
Lumens Per Watt	127	129	124
Color Accuracy (CRI)	70	71	70

TRIBORO XL 100W - Replaces up to 400W HPS

TBLED4T100

Color Temp	5000K	4000K	3000K
Input Watts	105	105	105
Output Lumens	13,407	13,662	13,136
Lumens Per Watt	128	130	125
Color Accuracy (CRI)	70	71	70

TBLED3T100

Color Temp	5000K	4000K	3000K
Input Watts	104	104	104
Output Lumens	13,302	13,555	13,033
Lumens Per Watt	128	130	125
Color Accuracy (CRI)	70	71	70

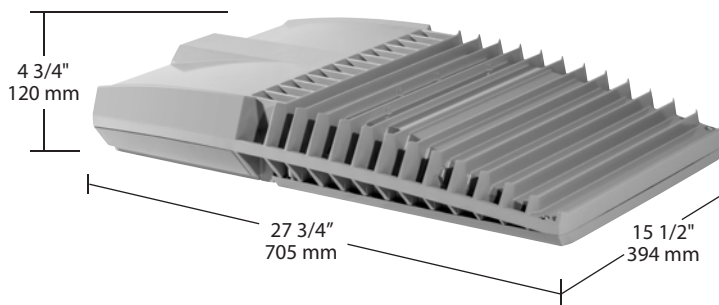
TBLED2T100

Color Temp	5000K	4000K	3000K
Input Watts	104	104	104
Output Lumens	13,604	13,863	13,329
Lumens Per Watt	131	111	128
Color Accuracy (CRI)	70	72	70

Dimensions

TRIBORO XL 240W, 150W and 100W

Weight: 36.6 lbs.
EPA: 1.7



UL Listing: Suitable for wet locations

LEDs: Multi-chip, high-output, long-life LEDs

Lifespan: 100,000-hour LED lifespan based on IES LM-80 results and TM-21 calculations

IP Rating: Rated IP66, protected against dust and water ingress

240W Driver: Class 2, Constant current, 120V: 2.85A; 208V: 1.175A; 240V: 1.019A; 347V: 0.66A; 480V: 0.5A

150W Driver: Class 2, Constant current, 120V: 1.2A; 208V: 0.88A; 240V: 0.76A; 277V: 0.66A; 347V: 0.22A 480V - 0.18A

100W Driver: Class 2, Constant current, 120V 1.6 208V: 0.54A; 240V: 0.47A; 277V: 0.44A; 347V: 0.22A, 480V: 0.18A

Surge Protection: 10kV surge protection

Dimming: 0-10V dimming option available

Ambient Temperature: Suitable for use in 40°C ambient temperatures

Cold Weather Starting: The minimum starting temperature is -40°C (-40°F)

Thermal Management: Superior heat dissipation with external "Airflow" fins

Housing: Die-cast aluminum

Mounting: Fits most standard roadway upsweep arms. Adaptor bracket supplied fits 1 5/16" to 2 3/8" OD pipe.

Lens: Tempered clear glass

Reflector: Vacuum-metalized polycarbonate

Optics: Type II, Type III and Type IV available

Gaskets: High-temperature silicone gaskets

Color Stability: LED color temperature is warranted to shift no more than 200K in CCT over a 5 year period.

Color Uniformity: RAB's range of CCT (Correlated Color Temperature) follows the guidelines of the American National Standard for Specifications for the Chromaticity of Solid State Lighting (SSL) Products, ANSI C78.377-2017.

Finish: Our environmentally friendly polyester powder coatings are formulated for high-durability and long-lasting color, and contain no VOC or toxic heavy metals.

Green Technology: Mercury and UV free. RoHS-compliant components

RoHS: RoHS certified components used in the manufacture of this product