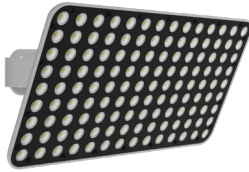


# GAME ON Sports Light

**RAB**

GAMERGB



PROJECT: \_\_\_\_\_

DATE: \_\_\_\_\_

TYPE: \_\_\_\_\_

PREPARED BY: \_\_\_\_\_

GAME / GAMEB55



## KEY FEATURES

- Sports light available in following models:  
GAMERGB: 120W  
GAME: 520W  
GAMEB55: 520W
- CCT: 5000K except 120W. 120W models are tunable RGBW.
- Mounting accessories (trunnion, slipfitter, square beam, laser kit) sold separately
- Available with various NEMA beams.  
Suitable for wet locations
- IP65 and IK10 rated
- 120-277V & 208-480V dimming driver.
- Standard 10ft cable with connector. 100ft cable optional.
- 10-year limited warranty

GAME ON sports light with RGBW tunable option



## PERFORMANCE

MODEL#	GAMERGB					GAME	GAMEB55	GAME/480	GAMEB55/480
COLOR	RED	GREEN	BLUE	RGB	4000K	5000K			
NEMA TYPE	6HX6V	5HX5V	3HX3V	5HX5V		3HX3V	5HX5V	3HX3V	5HX5V
WATTAGE	120W					520W		520W	
INPUT WATTS	109.2W	119.1W	119.1W	119.5W	119.5W	519.1W	519W	505.6W	505.6W
LUMENS	1,671	8,338	2,511	6,891	6,652	67,254	65,132	67,096	65,473
EFFICACY	15.3	70	21.1	57.7	55.7	129.6	125.5	132.7	129.5
CRI	7	-18	-37	66	82	83	83	83	82
VOLTAGE RATING	208-480V					120-277V		208-480V	

## TECHNICAL SPECIFICATIONS

### COMPLIANCE

#### UL Listed

Suitable for wet locations

#### IK10 Listed

IK10 rated for protection against impact

#### IP Ratings

Ingress Protection rating of IP65 for dust and water

### COMPLIANCE

#### DLC Listed

This product is listed by Design Lights Consortium (DLC) as an ultra-efficient premium product that qualifies for the highest tier of rebates from DLC Member Utilities. Designed to meet DLC 5.1 requirements.

#### DLC ID:

GAME: S-XV0K0S

GAME/480: S-ZQ2RGC

GAMEB55: S-69K92N

GAMEB55/480: S-69LKD

## TECHNICAL SPECIFICATIONS

### CONSTRUCTION

#### Cold Weather Starting

Minimum starting temperature is -40°F (-40°C)

#### Maximum Ambient Temperature

Suitable for use in up to 104°F (40°C)

#### Housing

Precision die-cast aluminum

#### Mounting

Standard Yoke Mount. Drivers can be mounted on the fixture bracket on top of the cross arms or remotely on the poles using driver mounting bracket accessories. Slipfitter mount, square beam mount and rail mounting kits sold separately.

#### Tilt Increment

Continuous tilting

#### Lens

Clear polycarbonate

#### Reflector

Polyethylene Terephthalate (PET)

#### Green Technology

Mercury and UV free. RoHs-compliant components.

#### Finish

Powder coated & formulated for high durability and long lasting color

#### NEMA

GAME / GAME55: 3HX4V & 5HX5V

GAMERGB: 6HX6V

#### Vibration Ratings

3G vibration rating per ANSI C136.31

#### EPA (Effective Projected Area)

MODEL	EPA
GAME	3.2
GAMEB55	3.2
GAME/480	3.2
GAMEB55/480	3.2
GAMERGB	1.06

### ELECTRICAL

#### Drivers:

Constant Current, Class 1, 120-277V, 50/60 Hz

**GAME:** 4.34A @120V, 2.5A @208V, 2.17A @240V, 1.85A @277V

**GAMEB55:** 4.34A @120V, 2.5A @208V, 2.17A @240V, 1.85A @277V

#### Drivers:

Constant Current, Class 1, 208-480V, 50/60 Hz

**GAME/480:** 2.5A @208V, 2.17A @240V, 1.85A @277V, 1.09A @480V

**GAMEB55/480:** 2.52A @208V, 2.19A @240V, 1.89A @277V, 1.09A @480V

**GAMERGB (RED):** 0.80A @208V, 0.69A @240V, 0.60A @277V, 0.35A @480V

**GAMERGB (GREEN):** 0.84A @208V, 0.73A @240V, 0.63A @277V, 0.37A @480V

**GAMERGB (BLUE):** 0.84A @208V, 0.73A @240V, 0.63A @277V, 0.37A @480V

**GAMERGB (RGB):** 0.85A @208V, 0.73A @240V, 0.64A @277V, 0.37A @480V

**GAMERGB (4000K):** 0.84A @208V, 0.73A @240V, 0.63A @277V, 0.37A @480V

#### Dimming Driver:

Driver includes wiring for 0-10V dimming systems. Dim as low as 10%.

*Note: Lightcloud Blue models do not require 0-10V dimming circuit.*

**Surge Protection:** 20kV

### ELECTRICAL

#### THD:

**GAME:** 8.9% at 120V, 5.2% at 277V

**GAMEB55:** 8.4% at 120V, 5.2% at 277V

**GAME/480:** 8.8% at 480V

**GAMEB55/480:** 7.81% at 480V

**GAMERGB (RED):** 25% at 480V

**GAMERGB (GREEN):** 24.5% at 480V

**GAMERGB (BLUE):** 24.1% at 480V

**GAMERGB (RGB):** 23.6% at 480V

**GAMERGB (4000K):** 23.9% at 480V

#### Power Factor:

**GAME:** 99.8% at 120V, 98.0% at 277V

**GAMEB55:** 99.8% at 120V, 98.0% at 277V

**GAME/480:** 96.4% at 480V

**GAMEB55/480:** 96.4% at 480V

**GAMERGB (RED):** 65.9% at 480V

**GAMERGB (GREEN):** 68.0% at 480V

**GAMERGB (BLUE):** 67.8% at 480V

**GAMERGB (RGB):** 67.8% at 480V

**GAMERGB (4000K):** 68.1% at 480V

### LED CHARACTERISTICS

#### LEDs

Long-life, high-efficacy, surface-mount LEDs

#### Color Uniformity

RAB's range of Correlated Color Temperature follows the guidelines of the American National Standards for Specifications for the Chromaticity of Solid State Lighting (SLL) Products, ANSI C78.377-2017.

#### Color Temperature

5000K for 520W models

#### Color Tuning (RGBW models)

Choose from 16+ million colors to customize your space to fit every mood.

#### Tunable White (RGBW Models)

Adjust the color temperature from 2200K to 6500K via the Lightcloud Blue Remote or the mobile app.

### OTHER

#### Warranty

The RAB 10-year, limited warranty covers light output, driver performance and paint finish. RAB's warranty is subject to all terms and conditions found at [rablighting.com/warranty](http://rablighting.com/warranty)

#### Lifespan

100,000-hour LED lifespan based on IES LM-80 results and TM-21 calculations

## WIRELESS NETWORK LIGHTING CONTROLS

Lightcloud products offer integrated network lighting control for a truly wireless solution that allows you to manage RAB's various compatible devices. With RAB's patented Rapid Provisioning technology, devices can be quickly and easily commissioned for residential and commercial applications. Each device can communicate with other devices in the mesh network. With two Lightcloud systems to choose from, it's easy to implement controls anywhere.

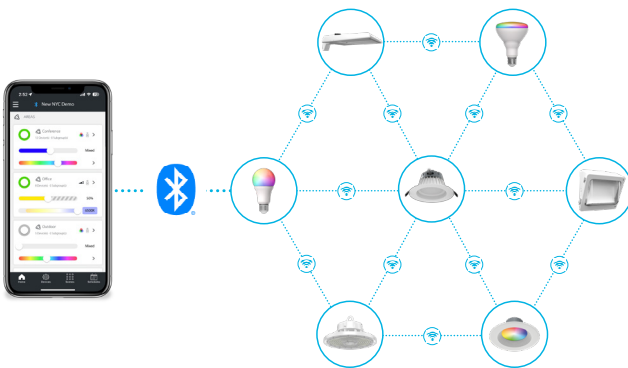


Learn more about Lightcloud wireless networked lighting controls.

Design Lights Consortium Network Lighting Controls:

- Interior Applications: N1XMLOEATB
- Exterior Applications: NHCZ2BIA17L

## Lightcloud®



- Utilizes Bluetooth Mesh, eliminating the need for a Gateway or Hub
- Ideal for applications that need basic wireless control such as ON/OFF, dimming, color tuning, Schedules, and SmartShift
- Download the Lightcloud Blue mobile app for iOS or Android devices
- Add the XDIM/BRIDGE/LCB and LCGATEWAY to adopt premium Lightcloud Enterprise features

### SIMPLE SETUP



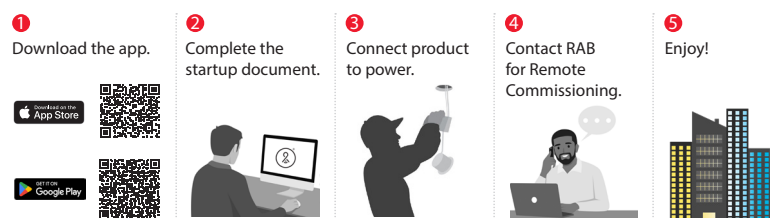
Learn more about [Lightcloud Blue](#). Visit the [Lightcloud Blue Resources](#) page for more information on how to use the system.

## Lightcloud®



- Utilizes a secure cellular and Zigbee mesh network that requires a Gateway or Hub (sold separately)
- Offers premium features like remote commissioning, demand response, BACnet integration, and more
- Download the Lightcloud Enterprise mobile app for iOS or Android devices

### SIMPLE SETUP



Learn more about [Lightcloud Enterprise](#). Visit the [Lightcloud Enterprise Resources](#) page for more information on how to use the system.

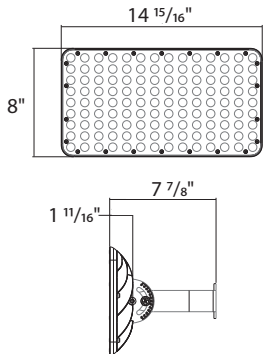
# GAME ON Sports Light



## DIMENSIONS

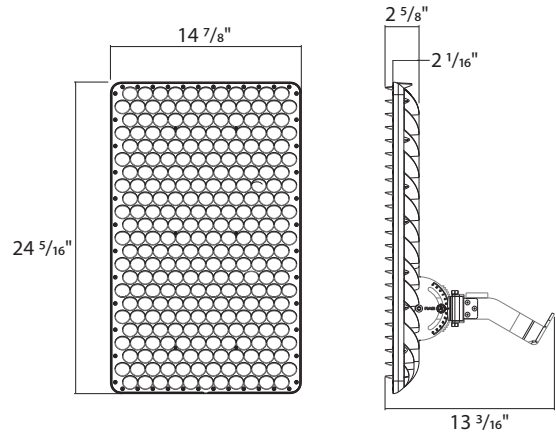
### GAMERGB

Weight: 6.5 lbs



### GAME /GAMEB55

Weight: 21.0 lbs



## ACCESSORIES



CATALOG#	UPC	DESCRIPTION
GAME-SB	192552048552	GAME SPORT LIGHT SQUARE BEAM MOUNTING ADAPTER
GAME-SF	192552048545	GAME SPORT SLIPFITTER MOUNTING KIT
GAME-LSR	192552048538	GAME SPORT LIGHT LASER KIT ACCESSORY
GAME-CABLE-100	192552048569	GAME SPORT LIGHT CABLE 3-WIRE CABLE 100FT
GAMERGB-CABLE-100	192552049740	GAME SPORT LIGHT CABLE 6-WIRE 100FT

## ORDERING MATRIX

### GAME

Family	Distribution		Wattage		Mounting		Color Temp		Finish		Driver		Controls		Driver Cable Length	
GAME																
	BLANK B55	3HX4V 5HX5V	BLANK	520W	BLANK	Trunnion	BLANK	5000K	BLANK	Gray	BLANK /480	120-277V 208-480V	BLANK /LC /LCB	No Option Lightcloud Lightcloud Blue	BLANK	10ft Cable with Connector

### GAMERGB

Family	Distribution	Wattage	Mounting	Finish	Driver	Color Tuning	Driver Cable Length
GAMERGB	<div></div> <div>BLANK6HX6V</div>	<div></div> <div>BLANK120W</div>	<div></div> <div>BLANKTrunnion</div>	<div></div> <div>BLANKGray</div>	<div>/480</div> <div>/480208-480V</div>	<div></div> <div>BLANK16+ million colors; Tunable White 2200-4000K</div>	<div></div> <div>BLANK10ft Cable with Connector</div>