

HAZSR Hazardous Location Strip Light



HAZSR2



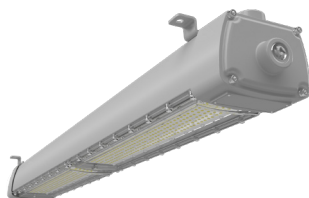
PROJECT: _____

DATE: _____

TYPE: _____

PREPARED BY: _____

HAZSR4



KEY FEATURES

- Hazardous location striplight available 2 sizes and 4 wattages:
HAZSR2: 2 ft, 30W
HAZSR2H : 2 ft, 60W
HAZSR4: 4 ft, 80W
HAZSR4H : 4 ft, 120W
- CCT: 5000K
- Battery backup options available
- Surface Mount
- Certified for the following locations:
Class I, Division 2 (Groups A, B, C, D)
- IP66 and IK10 rated
- 5-Year, no-compromise warranty

CID2, 80 CRI, Hazardous location strip light



0-10V



100,000
HOURS



IP66
RATED



WET
RATED



IK10
RATED

PERFORMANCE

HAZSR2	5000K	HAZSR2H	5000K
WATTAGE	30W	WATTAGE	60W
INPUT WATTS	29.9W	INPUT WATTS	59.7W
LUMENS	4,933	LUMENS	9,244
EFFICACY (LM/W)	165.0	EFFICACY (LM/W)	154.9
CRI	83	CRI	82
VOLTAGE RATINGS	120-277V	VOLTAGE RATINGS	120-277V

HAZSR4	5000K	HAZSR4H	5000K
WATTAGE	80W	WATTAGE	120W
INPUT WATTS	81.2W	INPUT WATTS	120.1W
LUMENS	13,387	LUMENS	19,259
EFFICACY (LM/W)	164.9	EFFICACY (LM/W)	160.4
CRI	83	CRI	83
VOLTAGE RATINGS	120-277V	VOLTAGE RATINGS	120-277V

HAZSR4	5000K	HAZSR4H	5000K
WATTAGE	80W	WATTAGE	120W
INPUT WATTS	81.1W	INPUT WATTS	128.3W
LUMENS	13,516	LUMENS	20,615
EFFICACY (LM/W)	166.7	EFFICACY (LM/W)	160.7
CRI	83	CRI	83
VOLTAGE RATINGS	480V	VOLTAGE RATINGS	480V

TECHNICAL SPECIFICATIONS

COMPLIANCE

Hazardous Location Classifications

Class 1, Division 2 (Groups A, B, C, D):

Class 1 (Hazardous Material in Surrounding Atmosphere): Flammable vapors or gases may be present
Division 2 (Presence of Hazardous Materials): Ignitable concentrations of hazards exist only under accidental system breakdowns or abnormal operating conditions

Groups A - D: The gases and vapors of Class 1 locations are broken into four groups by the Code: A, B, C, and D. These materials are grouped according to the ignition temperature of the substance, its explosion pressure, and other flammable characteristics.

Group A - The only substance in group A is acetylene because it is a gas with extremely high explosion pressures.

Group B - This group includes hydrogen and other materials with similar characteristics.

Group C & D - The most usual Class 1 groups. They comprise the greatest percentage of all Class I hazardous locations. Found in Group C is ethylene. Found in Group D are many of the most common flammable substances such as butane, gasoline, natural gas and propane

UL Listed

Suitable for wet locations

UL844:

Electric lighting fixtures for use in hazardous (classified) locations

IP Rated

Ingress Protection rating of IP66 for dust and water

IK10

IK10 rated for protection against impact

DLC Listed

This product is on the Design Lights Consortium (DLC) Qualified Products List and is eligible for rebates from DLC Member Utilities. Designed to meet DLC 5.1 requirements.

CATALOG#	DLC ID	CATALOG#	DLC ID
HAZSR2	S-NVZ27N	HAZSR4/480	S-P3XRK3
HAZSR2H	S-R5WRVR	HAZSR4H	S-XRRSZT
HAZSR4	S-9HLQPP		
HAZSR4H	S-KZ0ZH9		

LED CHARACTERISTICS

LEDs

Long-life, high-efficacy, discrete, surface-mount LEDs

Color Uniformity

RAB's range of Correlated Color Temperature follows the guidelines of the American National Standard for Specifications for the Chromaticity of Solid State Lighting (SSL) Products, ANSI C78.377-2017.

CONSTRUCTION

Cold Weather Starting

The minimum starting temperature is -40°C (-40°F)

Cold Weather Starting for battery back-up

The minimum starting temperature is 0°C (32°F)

Maximum Ambient Temperature

HAZSR2H, HAZSR4, and HAZS4/480: Suitable for use in up to 50°C (122°F)

HAZSR2: Suitable for use in up to 55°C (131°F)

HAZSR4H and HAZSR4H/480: Suitable for use in up to 40°C (104°F)

Maximum Ambient Temperature range for battery back-up

HAZSR2H/E and HAZSR4H/E: Suitable for use in up to 40°C (104°F)

HAZSR2/E and HAZSR4/E: Suitable for use in up to 50°C (122°F)

Mounting

Mounting brackets fixed on the fixture for surface mount

Housing

Aluminum

Lens

Impact-resistant polycarbonate lens

Finish

Formulated for high durability and long-lasting color

Green Technology

Mercury and UV free. RoHs-compliant components.

ELECTRICAL

Drivers:

Constant Current, Non-Class 2, 120-277V, 50/60 Hz,

HAZSR2: 120V: 0.30A, 208V: 0.18A, 240V: 0.16A, 277V: 0.15A

HAZSR2H: 120V: 0.63A, 208V: 0.35A, 240V: 0.32A, 277V: 0.28A

HAZSR4: 120V: 0.84A, 208V: 0.48A, 240V: 0.42A, 277V: 0.38A

HAZSR4H: 120V: 1.24A, 208V: 0.71A, 240V: 0.66A, 277V: 0.56A

HAZSR4: 480V: 0.23A

HAZSR4H: 480V: 0.34A

Dimming Driver:

Driver includes dimming control wiring for 0-10V dimming systems. Requires separate 0-10V DC dimming circuit. Dims down to 10%.

THD / Power Factor

CATALOG#	120V		277V		480V	
	THD	PF	THD	PF	THD	PF
HAZSR2	0.9%	99.7%	3.3%	92.6%		
HAZSR2H	2.3%	99.8%	8.2%	90.4%		
HAZSR4	1.6%	99.9%	10.5%	94.6%		
HAZSR4H	3.7%	99.7%	7.8%	91.3%		
HAZSR4/480					8.8%	89.2%
HAZSR4H/480					10.5%	87.7%

Surge Protection

HAZSR2: L-N:4KV, L/N-FG:6KV

HAZSR2H/ HAZSR4 / HAZSR4H: L-N:6KV, L/N-FG:10KV

All 480V models: L-N:2KV, L/N-FG:4KV

All models with battery backup: L-N:1KV, L/N-FG:2KV

HAZSR Hazardous Location Strip Light



TECHNICAL SPECIFICATIONS

ELECTRICAL

Battery Backup Light Loss Factor:

Powers the fixture for a minimum of 90 minutes in the event of a power failure. Battery backup only available for the 120-277V models.

Battery Backup Light Loss Factor:

HAZSR2/E: 0.32

HAZSR2H/E: 0.16

HAZSR4/E: 0.12

HAZSR4H/E: 0.08

OTHER

Warranty

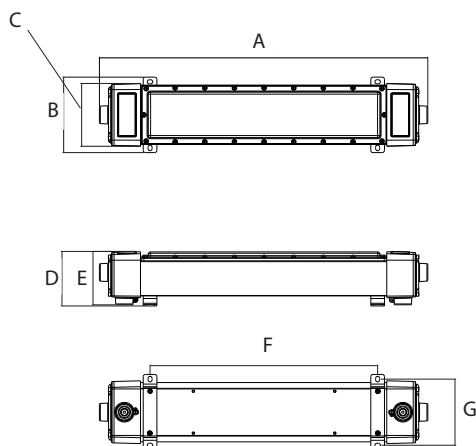
RAB warrants that our LED products will be free from defects in materials and workmanship for a period of five (5) years from the date of delivery to the end user, including coverage of light output, color stability, driver performance and fixture finish.

Lifespan

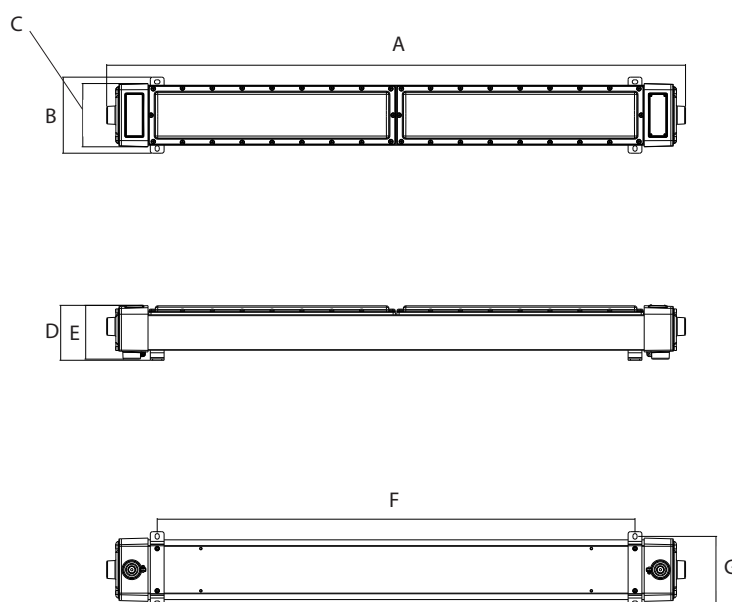
100,000-Hour LED lifespan based on IES LM-80 results and TM-21 calculations Rab's warranty is subject to all terms and conditions found at rablighting.com/warranty

DIMENSIONS

HAZSR2



HAZSR4



MODEL#	A	B	C	D	E	F	G
HAZSR2 / HAZSR2H	28 ³ / ₈ "	6 ¹ / ₂ "	5 ⁷ / ₁₆ "	4 ¹¹ / ₁₆ "	4 ⁵ / ₈ "	19 ⁵ / ₈ "	5 ¹¹ / ₁₆ "
HAZSR4 / HAZSR4H	49 ⁵ / ₈ "	6 ¹ / ₂ "	5 ⁷ / ₁₆ "	4 ¹¹ / ₁₆ "	4 ⁵ / ₈ "	40 ¹⁵ / ₁₆ "	5 ¹¹ / ₁₆ "

MODEL#	Weight
HAZSR2	12.4 lbs
HAZSR2H	12.8 lbs
HAZSR2/E	14.6 lbs
HAZSR2H/E	15.0 lbs
HAZSR4	19.3 lbs
HAZSR4H	19.4 lbs
HAZSR4/E	21.5 lbs
HAZSR4H/E	21.8 lbs
HAZSR4/480	19.6 lbs
HAZSR4H/480	20.1 lbs

ORDERING MATRIX

HAZSR Hazardous Location Strip Light

Family	Size/Wattage	Mounting	Color Temperature	Finish	Driver	Battery Backup
HAZSR						
	22 ft (30W)	BLANK Surface Mount	BLANK5000K	BLANKGray	BLANK120-277V, 0-10V Dimming	BLANKNo Option
	2H2 ft (60W)					
	44 ft (80W)				/480 *	E ** Emergency Battery Backup
	4H4 ft (120W)				0-10V Dimming	

* 480V is available for 4ft models only
** Battery backup only available for 120-277V models