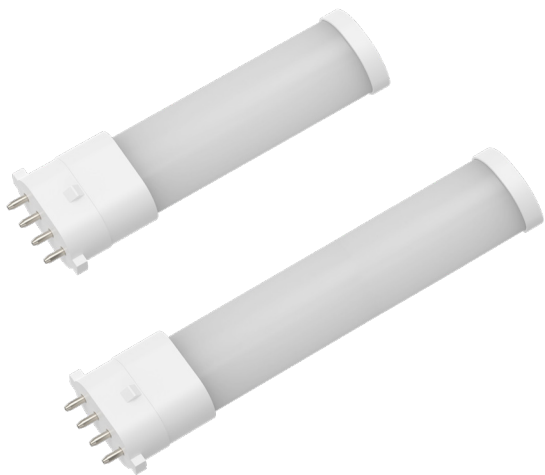


# PLS Lamp 4-Pin - CCT-Adjustable



PROJECT: \_\_\_\_\_

DATE: \_\_\_\_\_

TYPE: \_\_\_\_\_

PREPARED BY: \_\_\_\_\_



7W/9W/13W CFL Replacement, 4-Pin 2G7/2GX7, UL Type B, Horizontal

FIELD  
ADJUSTABLE

80 CRI

50,000  
HOURS

DAMP  
RATED

RoHS

FCC

ENCLOSED  
FIXTURE RATING

120-277V

KEY FEATURES

- 4 color temperatures in 1 SKU (2700/3000/3500/4000K)
- Bypass versions replace 7W-13W CFL lamps with 2G7 & 2GX7 bases
- Ballast Bypass – Install directly to line voltage
- Compatible with G24d / GX24d & G24q / GX24q installations
- 5-Year, No-Compromise Warranty

## PERFORMANCE

| Catalog Number         | Wattage<br>Equivalency | Input<br>Wattage | Lumens          | Efficacy                | Color Temperature  | L70<br>Lifespan | Base<br>Type |
|------------------------|------------------------|------------------|-----------------|-------------------------|--|-----------------|--------------|
| PLS-3.5-H-8FA-BYP-2G7  | 7-9W CFL               | 3.5W             | 389-392-428-426 | 113.7/114.6/127.0/123.8 | Field adjustable<br>via dip switch<br>2700/3000/3500/4000K | 50,000 hrs      | 2G7          |
| PLS-5.2-H-8FA-BYP-2GX7 | 13W CFL                | 5.5W             | 628-659-696-690 | 119.2/125.0/135.1/130.7 |  |                 | 2GX7         |

## PERFORMANCE (CONT)

| Catalog Number        | Lamp Wattage | CCT  | Efficacy | Lumens | Equivalency Wattage |
|-----------------------|--------------|------|----------|--------|---------------------|
| PLS-3.5-H-8FA-BYP-2G7 | 3.3W         | 2700 | 117 lm/W | 380 lm | 9                   |
|                       |              | 3000 | 123 lm/W | 400 lm |                     |
|                       |              | 3500 | 129 lm/W | 420 lm |                     |
|                       |              | 4000 | 123 lm/W | 400 lm |                     |

| Catalog Number         | Lamp Wattage | CCT  | Efficacy | Lumens | Equivalency Wattage |
|------------------------|--------------|------|----------|--------|---------------------|
| PLS-5.2-H-8FA-BYP-2GX7 | 5.2W         | 2700 | 119 lm/W | 620 lm | 11                  |
|                        |              | 3000 | 127 lm/W | 660 lm |                     |
|                        |              | 3500 | 131 lm/W | 680 lm |                     |
|                        |              | 4000 | 131 lm/W | 680 lm |                     |

## TECHNICAL SPECIFICATIONS

### CONSTRUCTION

**Product Type**

PLS Lamps with CCT-Adjustability

**Shape**

PLS

**Endcap Material**

Copper

**Lamp Enclosure Material**

Polycarbonate

**Finish**

White

**Lens Finish**

Frosted

### COMPLIANCE

**Listings**

UL Classified, UL Recognized

**Environment**

Suitable for use indoors in dry and damp environments.

**Fixture Rating**

Suitable for use in enclosed fixtures

**California Energy Commission (CEC) Status**

Lawful for Sale in California

**NSF Listed**

Meets NSF/ANSI standards for use in Food Zone (non-contact), Splash, and Non-Food Zones. Tube guard required in open fixtures.

**RoHS**

Mercury and UV free. RoHS-compliant components.

**FCC**

Complies with Part 15 of the FCC Rules

### ELECTRICAL

**Dimmable**

No

**Driver**

Constant Current; 120-277V; 50/60 Hz

**Input Voltage**

120-277V

**Operating Frequency**

50/60 Hz

**Operating Temperature**

-4°F to 113°F (-20°C to 45°C)

**THD**

<20%

**Power Factor**

0.9

**Flicker**

0.5

### INSTALLATION

**Installation Method**

Type B Installation:

Bypass ballast and wire socket directly to Line voltage

**Installation Orientation**

Horizontal

**Base Type**

2G7 - 3.5W

2GX7 - 5.2W

**Compatible Sockets**

2G7, 2GX7

### LED CHARACTERISTICS

**Beam Angle**

120°

**Color Temperature**

Field adjustable via dip switch 2700/3000/3500/4000K

**Color Accuracy (CRI)**

>80

**R9 Value**

High color performance with R9 greater than 0

**Color Consistency**

<7-step MacAdam Ellipse binning to achieve consistent fixture-to-fixture color

**Color Stability**

LED color temperature is warranted to shift no more than 200K in color temperature over a 5-year period

**Color Uniformity**

RAB's range of Correlated Color Temperature follows the guidelines of the American National Standard for Specifications for the Chromaticity of Solid State Lighting (SSL) Products, ANSI C78.377-2017.

### OTHER

**Warranty**

RAB warrants that our LED products will be free from defects in materials and workmanship for a period of five (5) years from the date of delivery to the end user, including coverage of light output, color stability, driver performance and fixture finish.

RAB's warranty is subject to all terms and conditions found at [rablighting.com/warranty](http://rablighting.com/warranty).

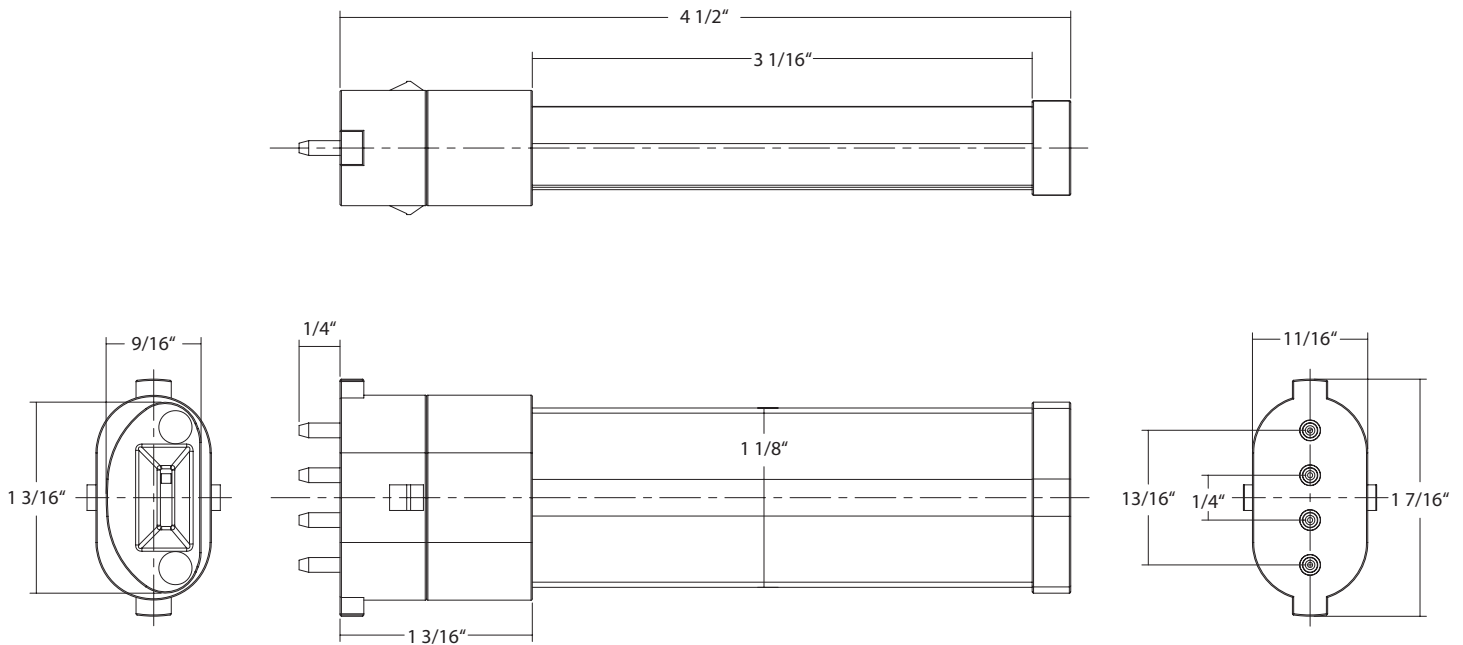
# PLS Lamp 4-Pin - CCT-Adjustable



## DIMENSIONS

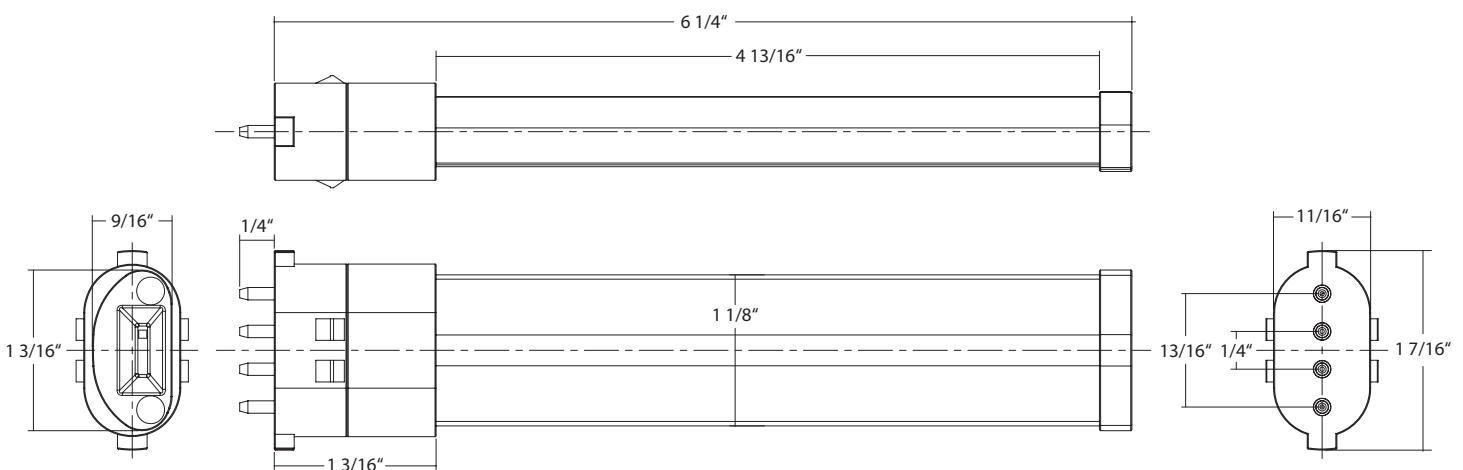
PLS-3.5-H-8FA-BYP-2G7

Weight: 0.07 lbs



PLS-5.2-H-8FA-BYP-2GX7

Weight: 0.08 lbs



# PLS Lamp 4-Pin - CCT-Adjustable



## ORDERING INFO

| Catalog Number         | Model Number                   | UPC          | Case Pack |
|------------------------|--------------------------------|--------------|-----------|
| PLS-3.5-H-8FA-BYP-2G7  | T20097(PLS-3.5-H-8FA-BYP-2G7)  | 192552017848 | 12        |
| PLS-5.2-H-8FA-BYP-2GX7 | T20098(PLS-5.2-H-8FA-BYP-2GX7) | 192552017855 | 12        |

## ORDERING MATRIX

| Family | Wattage              | Orientation     | CRI/Color Temp                     | Installation Type     | Base                 |
|--------|----------------------|-----------------|------------------------------------|-----------------------|----------------------|
| PLS    | -                    | -               | -                                  | -                     | -                    |
|        | 3.5 3.5W<br>5.2 5.2W | H<br>Horizontal | 8FA<br>80CRI, 2700/3000/3500/4000K | BYP<br>Ballast Bypass | 2G7 2G7<br>2GX7 2GX7 |