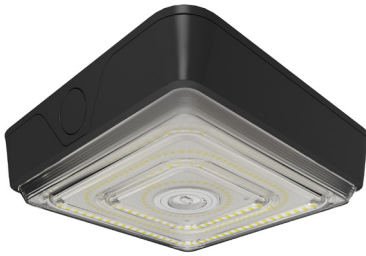


VAN Field-Adjustable Canopy Light



VAN40



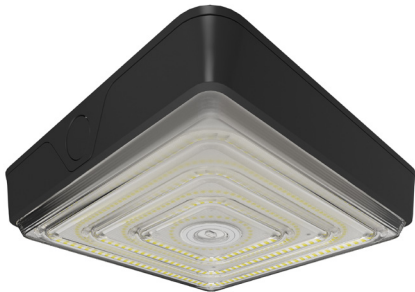
PROJECT:

DATE:

TYPE:

PREPARED BY:

VAN75



KEY FEATURES

- Canopy light in two sizes with selectable wattages:
VAN40: 40/30/20W (Default 40W)
VAN75: 75/60/40W (Default 75W)
- Field-adjustable CCT: 3000/4000/5000K (4000K default)
- Adjustable optics: Garage/Canopy (default: Canopy)
- 120-277V driver. 480V option available.
- MVS, PIR motion sensors, and multi-sensor remote accessories available
- Battery backup option available for 120-277V models
- UL listed for wet locations
- 10-year limited warranty (5-year no-compromise + 5-year limited)

Field-adjustable canopy light with adjustable optics



PERFORMANCE

VAN40 - CANOPY	3000K	4000K	5000K	3000K	4000K	5000K	3000K	4000K	5000K
WATTAGE	40W			30W			20W		
INPUT WATTS	40.3W	38.8W	40.1W	31.7W	30.5W	31.5W	20.6W	19.8W	20.5W
LUMENS	5,538	5,679	5,696	4,462	4,576	4,589	2,898	2,972	2,981
EFFICACY	137.4	146.4	142	140.8	150	145.7	140.7	150.1	145.4
CRI	84	85	83	84	85	83	84	85	83
VOLTAGE RATING	120-277V			120-277V			120-277V		

VAN40 - GARAGE	3000K	4000K	5000K	3000K	4000K	5000K	3000K	4000K	5000K
WATTAGE	40W			30W			20W		
INPUT WATTS	40.3W	38.8W	40.1W	31.8W	30.6W	31.6W	20.7W	19.9W	20.6W
LUMENS	5,140	5,278	5,297	4,153	4,264	4,280	2,687	2,759	2,769
EFFICACY	127.5	136	132.1	130.6	139.3	135.4	129.8	138.6	134.4
CRI	84	85	83	84	85	83	84	85	83
VOLTAGE RATING	120-277V			120-277V			120-277V		

VAN Field-Adjustable Canopy Light



PERFORMANCE

VAN40 - CANOPY	3000K	4000K	5000K	3000K	4000K	5000K	3000K	4000K	5000K
WATTAGE	40W			30W			20W		
INPUT WATTS	41.3W	39.9W	41.2W	32.1W	31.0W	32.0W	21.7W	21.0W	21.6W
LUMENS	5,485	5,693	5,737	4,280	4,442	4,476	2,763	2,868	2,890
EFFICACY	132.8	142.7	139.2	133.3	143.3	139.9	127.3	136.6	133.8
CRI	84	85	83	84	85	83	84	85	83
VOLTAGE RATING	480V			480V			480V		

VAN40 - GARAGE	3000K	4000K	5000K	3000K	4000K	5000K	3000K	4000K	5000K
WATTAGE	40W			30W			20W		
INPUT WATTS	41.3W	39.9W	41.1W	32.1W	31.0W	31.9W	21.7W	21.0W	21.6W
LUMENS	5,082	5,246	5,291	3,964	4,092	4,127	2,551	2,633	2,656
EFFICACY	124.0	131.5	128.7	124.0	132	129.4	117.6	125.4	123.0
CRI	84	86	84	85	86	84	85	86	84
VOLTAGE RATING	480V			480V			480V		

VAN75 - CANOPY	3000K	4000K	5000K	3000K	4000K	5000K	3000K	4000K	5000K
WATTAGE	75W			60W			40W		
INPUT WATTS	77.0W	73.5W	76.5W	58.6W	55.9W	58.2W	39.3W	37.5W	39.0W
LUMENS	10,837	11,247	11,197	8,504	8,826	8,786	5,856	6,078	6,050
EFFICACY	140.7	153	146.4	145.1	157.9	151	149	162.1	155.1
CRI	84	85	83	84	85	83	85	85	83
VOLTAGE RATING	120-277V			120-277V			120-277V		

VAN75 - GARAGE	3000K	4000K	5000K	3000K	4000K	5000K	3000K	4000K	5000K
WATTAGE	75W			60W			40W		
INPUT WATTS	76.8W	73.4W	76.5W	58.6W	56.0W	58.4W	39.2W	37.5W	39.0W
LUMENS	9,955	10,324	10,295	7,845	8,136	8,113	5,416	5,617	5,601
EFFICACY	129.6	140.7	134.6	133.9	145.3	138.9	138.2	149.8	143.6
CRI	84	85	84	85	85	84	85	85	84
VOLTAGE RATING	120-277V			120-277V			120-277V		

VAN75 - CANOPY	3000K	4000K	5000K	3000K	4000K	5000K	3000K	4000K	5000K
WATTAGE	75W			60W			40W		
INPUT WATTS	75.8W	73.1W	75.6W	58.7W	56.6W	58.5W	40.7W	39.3W	40.6W
LUMENS	10,764	11,272	11,209	8,499	8,900	8,850	5,884	6,162	6,127
EFFICACY	142	154.2	148.3	144.8	157.2	151.3	144.6	156.8	150.9
CRI	83	85	83	84	85	83	84	85	83
VOLTAGE RATING	480V			480V			480V		

VAN75 - GARAGE	3000K	4000K	5000K	3000K	4000K	5000K	3000K	4000K	5000K
WATTAGE	75W			60W			40W		
INPUT WATTS	75.8W	73.1W	75.5W	58.2W	56.1W	58.0W	41.1W	39.6W	40.9W
LUMENS	9,980	10,419	10,300	7,767	8,108	8,016	5,473	5,714	5,649
EFFICACY	131.7	142.5	136.4	133.5	144.5	138.2	133.2	144.3	138.1
CRI	84	85	84	85	85	84	84	85	84
VOLTAGE RATING	480V			480V			480V		

TECHNICAL SPECIFICATIONS

COMPLIANCE

UL Listed

UL listed for wet locations

DLC Listed

This product family is listed with the DesignLights Consortium (DLC). Individual SKUs within this family may carry either a DLC Standard or DLC Premium qualification. Please refer to the individual product specification sheet or the DLC Qualified Products List (QPL) at designlights.org to confirm the qualification status of a specific SKU prior to specification or purchase.

LED CHARACTERISTICS

LEDS

Long-life, high-efficacy, surface-mount LEDs

Color Uniformity

RAB's range of Correlated Color Temperature follows the guidelines of the American National Standards for Specifications for the Chromaticity of Solid State Lighting (SSL) Products, ANSI C78.377-2017.

Color Temperature

Adjustable CCT: 3000/4000/5000K (4000K Default)

FIELD ADJUSTABLE

Adjustable CCT

3000/4000/5000K (factory default 4000K)

Selectable wattages

VAN40: 40/30/20W (Default 40W)

VAN75: 75/60/40W (Default 75W)

Field-Adjustable Optics

Canopy /Garage (Default Canopy)

CONSTRUCTION

Cold Weather starting

Minimum starting temperature is -40°F (-40°C)

Maximum Ambient Temperature

Suitable for use in up to 122°F (50°C)

Cold Weather starting for Battery Backup

Minimum starting temperature is 32°F (-0°C)

Maximum Ambient Temperature for Battery Backup

Suitable for use in up to 122°F (50°C)

Housing

Precision die-cast aluminum housing

Mounting

Surface mount

Lens

Vandal resistant polycarbonate lens

Gasketing Material

Ethylene Propylene Diene Monomer (EPDM) gasket

IP Rating

Ingress protection rating of IP66 for dust and water

IK Ratings

IK08 rated for protection against impact

Green Technology

Mercury and UV free. RoHS-compliant components.

Finish

Formulated for high durability and long lasting color

ELECTRICAL

Drivers

Constant current, 120-277, 50/60 Hz

VAN40

40W: 120V: 0.33A, 208V: 0.19A, 240V: 0.16A, 277V: 0.14A

30W: 120V: 0.26A, 208V: 0.15A, 240V: 0.13A, 277V: 0.12A

20W: 120V: 0.16A, 208V: 0.11A, 240V: 0.1A, 277V: 0.08A

VAN75

75W: 120V: 0.61A, 208V: 0.35A, 240V: 0.31A, 277V: 0.27A

60W: 120V: 0.47A, 208V: 0.27A, 240V: 0.23A, 277V: 0.21A

40W: 120V: 0.31A, 208V: 0.18A, 240V: 0.16A, 277V: 0.15A

Constant current, 480V, 50/60 Hz

VAN40

40W: 480V: 0.09A

30W: 480V: 0.07A

20W: 480V: 0.05A

VAN75

75W: 480V: 0.16A

60W: 480V: 0.13A

40W: 480V: 0.10A

Dimming Driver

Driver includes dimming control wiring. Dims down to 10% before turning off.

THD

VAN40: 8.2% at 120V, 12.8% at 277V

VAN75: 6.8% at 120V, 9.4% at 277V

VAN40: 12.8% at 480V

VAN75: 16.4% at 480V

Power Factor

VAN40: 99.6% at 120V, 95.7% at 277V

VAN75: 99.7% at 120V, 97.0% at 277V

VAN40: 96.0% at 480V

VAN75: 93.9% at 480V

Battery Backup

Battery backup will operate the fixture 90 minutes if power fails. Wired for 120-277V only.

Emergency Light Loss Factor

VAN40:

40W: 0.22

30W: 0.30

20W: 0.45

VAN75:

75W: 0.16

60W: 0.21

40W: 0.32

Control Ready

Integrated sensor port allows for simple, quick sensor attachment without the need for fixture modification or additional materials.

VAN Field-Adjustable Canopy Light



TECHNICAL SPECIFICATIONS

OTHER

Warranty

The RAB 10-year, limited warranty (5-year no compromise + 5-year limited warranty) covers light output, driver performance and paint finish.

5- year no-compromise warranty

The RAB 5-year, no-compromise warranty covers light output, color stability, driver performance, paint finish and labor. RAB's warranty is subject to all terms and conditions found at rablighting.com/warranty.

OTHER (CONTINUED)

5- year limited warranty

The RAB 5-year, limited warranty covers light output, driver performance and paint finish. RAB's warranty is subject to all terms and conditions found at rablighting.com/warranty.

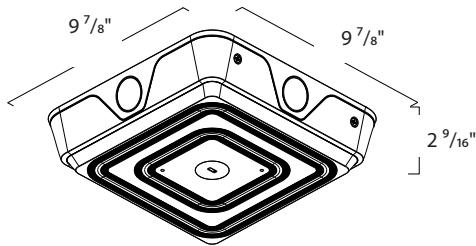
Lifespan

100,000-hour LED lifespan based on IES LM-80 results and TM-21 calculations

DIMENSIONS

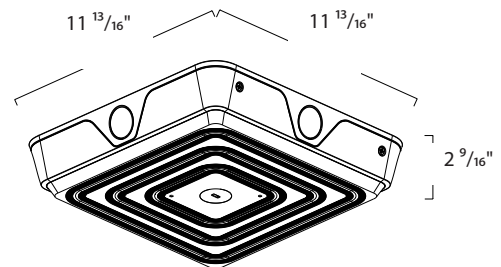
VAN40

Weighs: 6.6 lbs



VAN75

Weighs: 8.2 lbs



ACCESSORIES



SKU#	UPC	DESCRIPTION
MVS20	192552026017	MVS SENSOR MAX 6M HEIGHT 1P65
MVS20/LCB	192552042253	LC BLUE CONTROLLER 6M HEIGHT WITH INTEGRATED MVS SENSOR
PIR20	192552026024	PIR SENSOR MAX 6M HEIGHT 1P66
PIR20/LCB	192552042246	LC BLUE CONTROLLER 6M HEIGHT WITH INTEGRATED PIR SENSOR
MSR1	192552026055	MULTI SENSOR REMOTE

ORDERING MATRIX

VAN

Family	Wattage	Color Temperature	Optics	Finish	Driver	Battery Backup
VAN	40 75	BLANK 3000/4000/5000K CCT-Adjustable	BLANK FA Optics, Garage (155°) / Canopy (98°)	BLANK W Bronze White	BLANK /480 120-277V 480V	BLANK /E None Battery Backup *

* Battery Backup not available on 480V