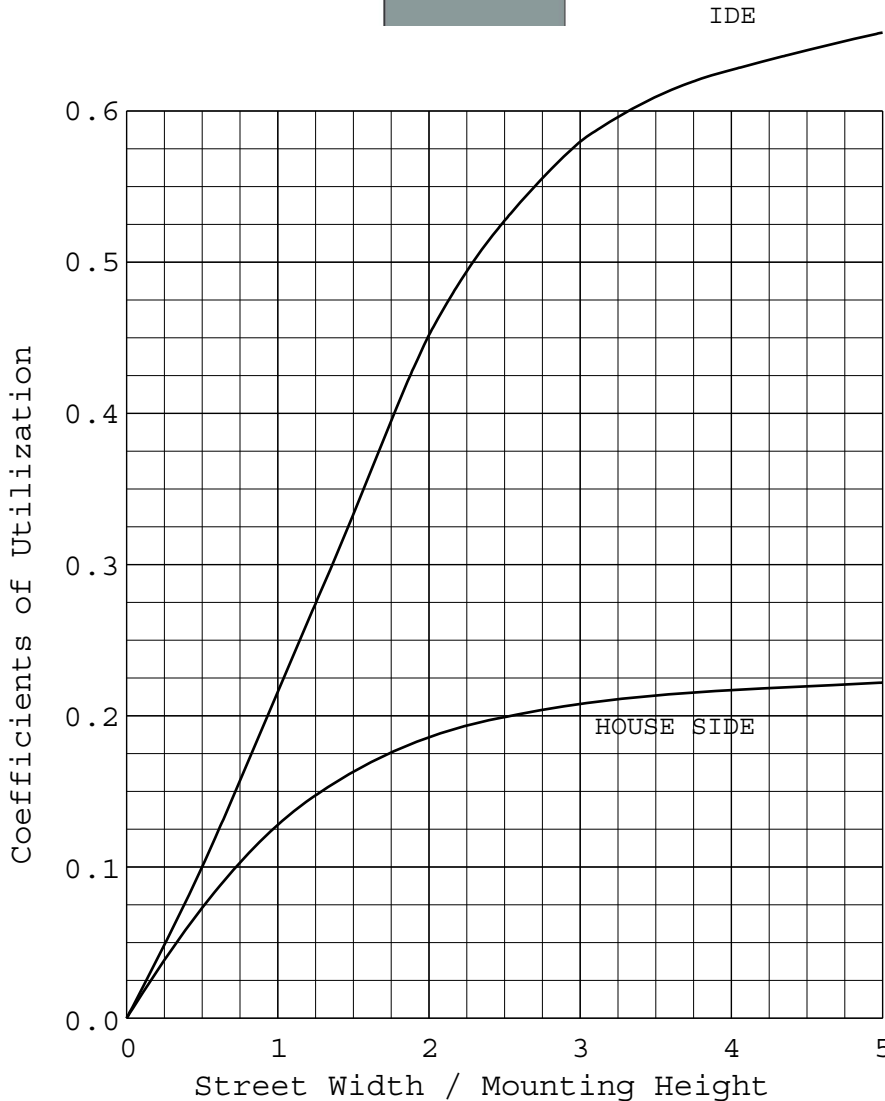
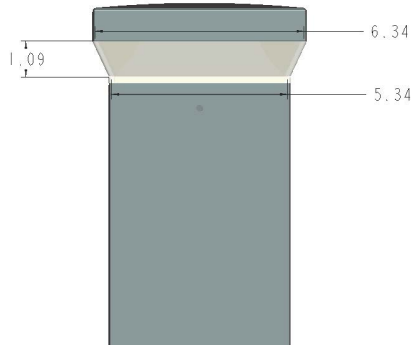


## COEFFICIENTS OF UTILIZATION AND FLUX DISTRIBUTION

REPORT NUMBER: RAB03692  
ISSUE DATE: 08/11/17 PAGE: 1 OF 11  
DATE SAMPLE TESTED: 08/11/17  
PREPARED FOR: RAB LIGHTING INC. RC  
LIGHTING  
CATALOG NUMBER: BLED12Y, BLED12Y/D10  
(42" SQUARE BOLLARD W/LED @  
90-DEGREES)  
\*(SEE PAGE 2 FOR MORE INFORMATION)\*



	LUMENS	PERCENT OF FIXTURE
DOWNWARD STREET SIDE	769.	69.4
DOWNWARD HOUSE SIDE	261.	23.5
DOWNWARD TOTAL	1030.	92.9
UPWARD STREET SIDE	51.	4.6
UPWARD HOUSE SIDE	27.	2.4
UPWARD TOTAL	78.	7.1
TOTAL FLUX	1109.	100.0

TOTAL INPUT WATTS = 11.8

EFFICACY = 94.0 Lm/W

Checked X.CAO

Approved D.WANG-MUNSON

ALL CANDELA AND LUMENS IN THIS REPORT ARE BASED ON ABSOLUTE PHOTOMETRY.  
THE COEFFICIENT OF UTILIZATION VALUES ARE BASED ON THE TOTAL ABSOLUTE  
LUMEN OUTPUT OF THIS LUMINAIRE SAMPLE.

REPORT NUMBER: RAB03692

PAGE: 2 OF 11

ISSUE DATE: 08/11/17

DATE SAMPLE TESTED: 08/11/17

PREPARED FOR: RAB LIGHTING INC. RC LIGHTING

ADDITIONAL INFORMATION

LUMINAIRE: EXTRUDED BROWN PAINTED SQUARE METAL LOWER HOUSING, CAST METAL TOP, CAST FINNED METAL HEAT SINK WITH WHITE PAINTED INTERIOR, MOLDED SPECULAR FINISHED PLASTIC REFLECTOR WITH WHITE CORNER DIVIDERS CREATING 4 OPTICAL COMPARTMENTS, 2 OPTICAL COMPARTMENT CONTAINS 1 WHITE CIRCUIT BOARD WITH 5 LEDS, FROSTED PLASTIC LENS, CAST BROWN PAINTED METAL BOTTOM.

LAMP: TEN LIGHT EMITTING DIODES (LEDs).

NOTE: THIS REPORT WITH THE USE OF THE NVLAP LOGO SHALL NOT BE USED BY THE CLIENT TO CLAIM PRODUCT CERTIFICATION, APPROVAL, OR ENDORSEMENT BY NVLAP, NIST, OR ANY AGENCY OF THE FEDERAL GOVERNMENT.

NOTE: DATA SHOWN IS ABSOLUTE FOR THE SAMPLE PROVIDED.

TOTAL INPUT WATTS = 11.832 W AT 277.0 VAC.

LED DRIVER: RDD-15W-032SE-A0350

TEST PROCEDURE: IESNA LM-79-08

LM-80 DATA AVAILABLE FROM MANUFACTURER FOR SOLID STATE SOURCE

AMBIENT: 25.3

ACCREDITED LABORATORY CODE 201058-0

REPORT NUMBER: RAB03692

ISSUE DATE: 08/11/17

PREPARED FOR: RAB LIGHTING INC. RC LIGHTING

PAGE: 3 OF 11

DATE SAMPLE TESTED: 08/11/17

BUG Rating:

Zonal Summary

Lumens

% of Fixture

B1 U2 G1

Zone Ratings

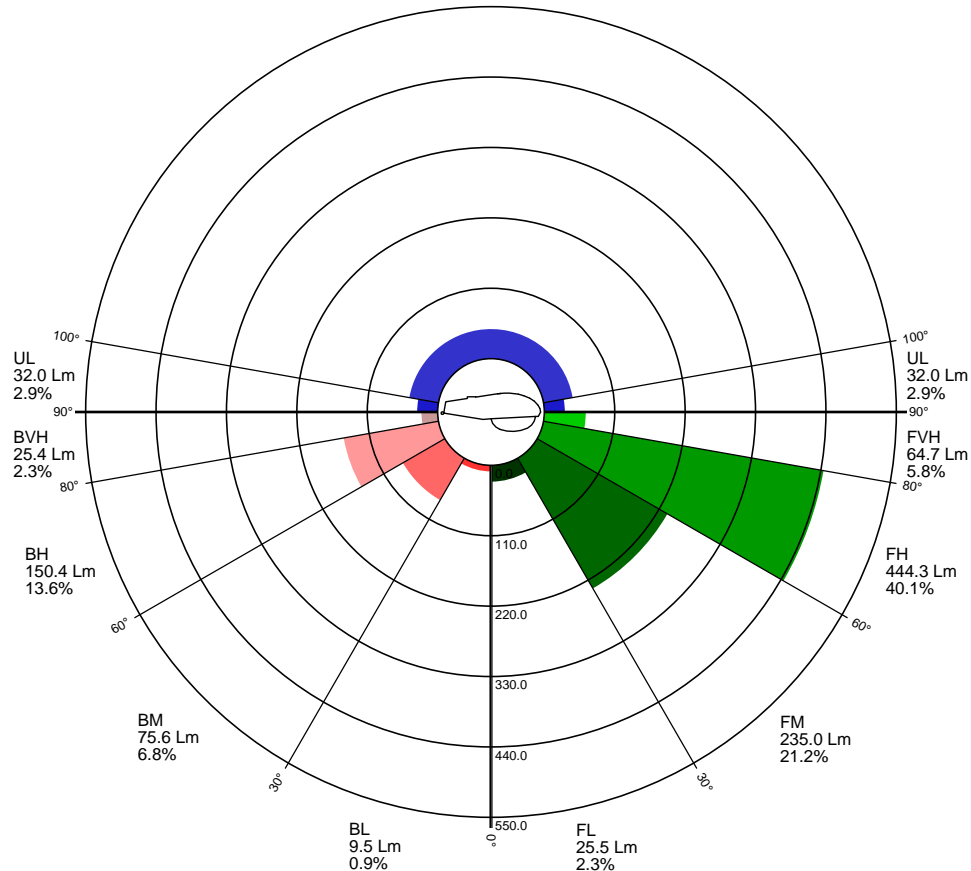
B U G

Forward		769	69.4			
FL	(0° - 30°)	25.5	2.3			
FM	(30° - 60°)	235.0	21.2			
FH	(60° - 80°)	444.3	40.1			G0
FVH	(80° - 90°)	64.7	5.8			G1
Backward		261	23.5			
BL	(0° - 30°)	9.5	0.9	B0		
BM	(30° - 60°)	75.6	6.8	B0		
BH	(60° - 80°)	150.4	13.6	B1		G1
BVH	(80° - 90°)	25.4	2.3			G1
Upward		78	7.1			
UL	(90° - 100°)	32.0	2.9		U2	
UH	(100° - 180°)	46.2	4.2		U2	
Trapped Light		0	0.0			
Total Flux		1109	100.0			

### Zonal Lumen Summary

(Linear scale)

UH  
46.2 Lm  
4.2%



REPORT NUMBER: RAB03692

ISSUE DATE: 08/11/17

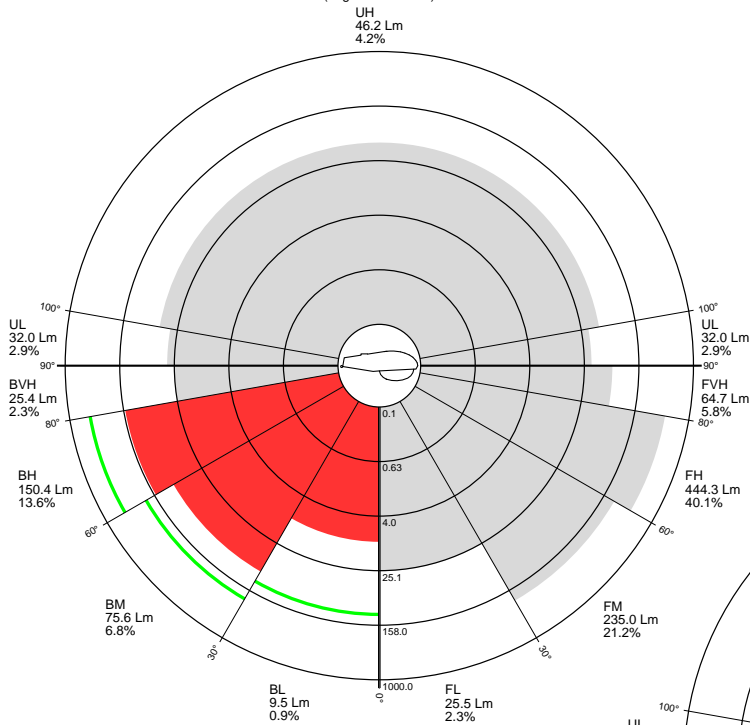
PREPARED FOR: RAB LIGHTING INC. RC LIGHTING

PAGE: 4 OF 11

DATE SAMPLE TESTED: 08/11/17

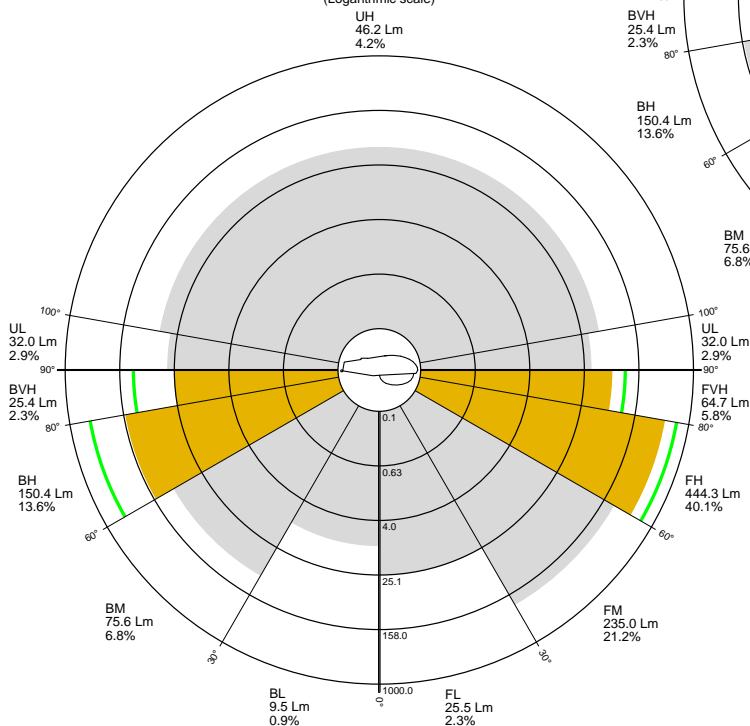
### Backlight Rating Details

(Logarithmic scale)



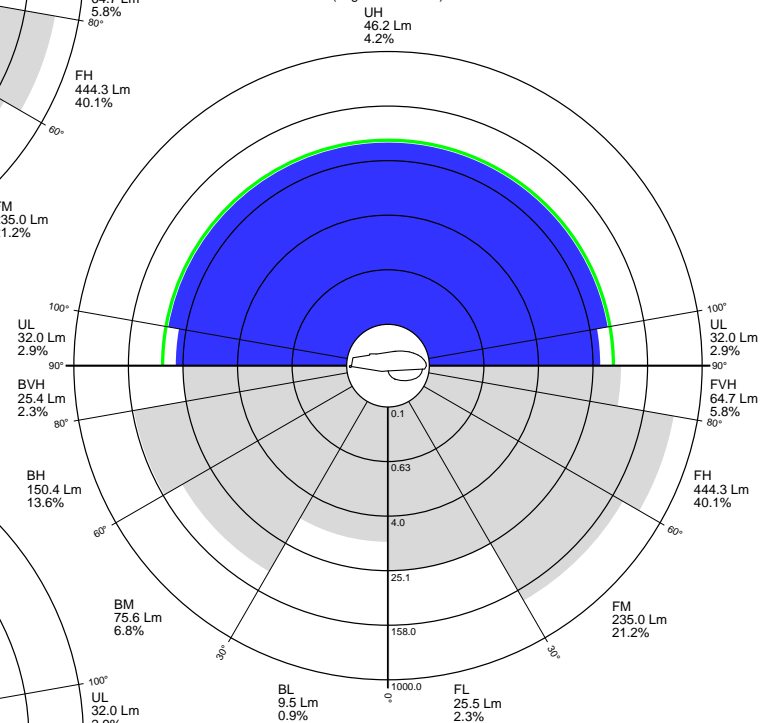
### Glare Rating Details

(Logarithmic scale)

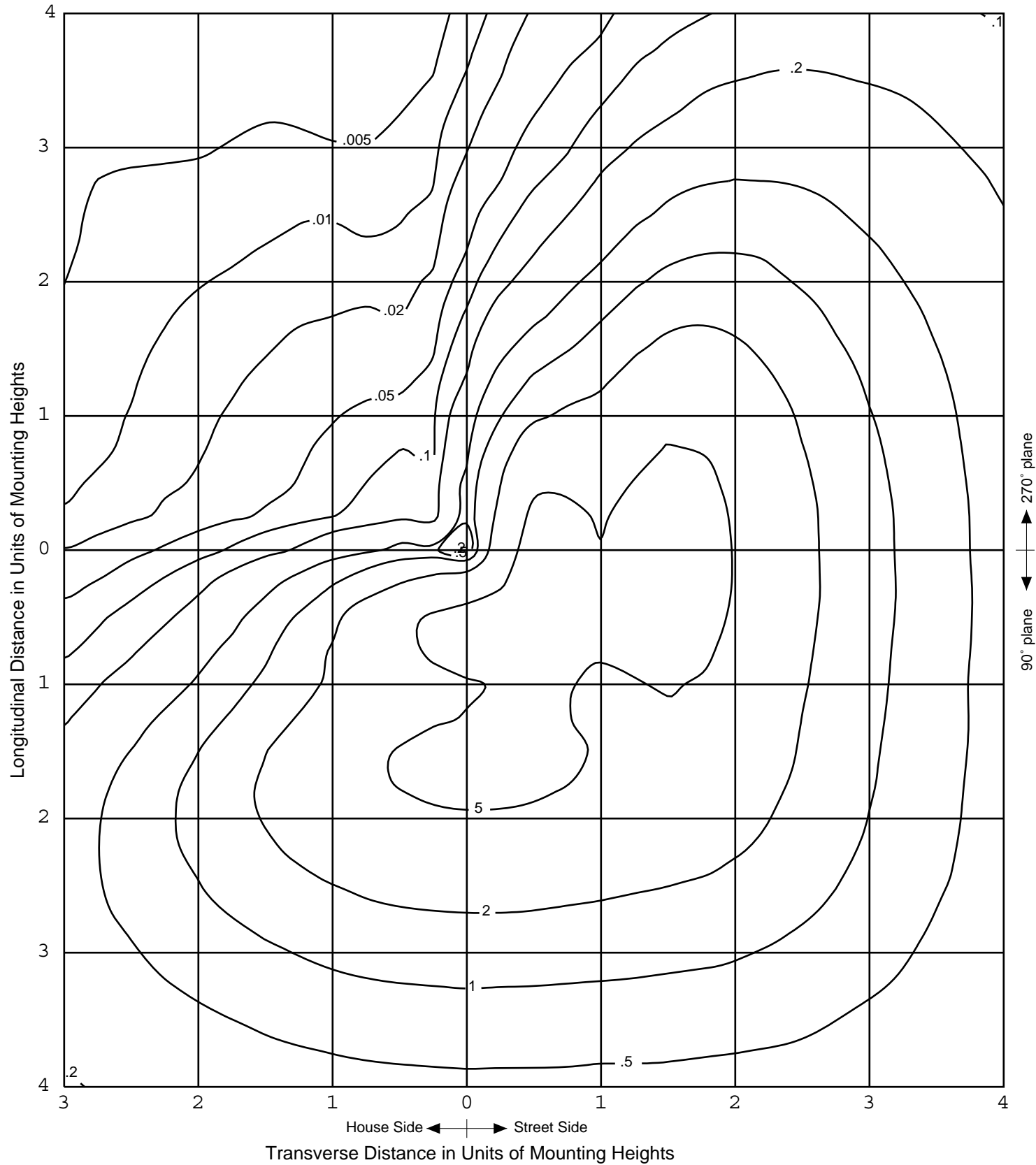


### Uplight Rating Details

(Logarithmic scale)



ISOFOOTCANDLE LINES OF HORIZONTAL ILLUMINATION  
Values based on 3.5 foot mounting height.



180 150 120 90 60 30 0

840 560 280

CANDELA

HOUSE SIDE  
STREET SIDE

VERTICAL PLANE THROUGH MAXIMUM CANDELA  
45.0 (Degrees Horizontal) = 843.0

REPORT NUMBER: RAB03692

PAGE: 7 OF 11

ISSUE DATE: 08/11/17

DATE SAMPLE TESTED: 08/11/17

PREPARED FOR: RAB LIGHTING INC. RC LIGHTING

### CANDELA TABULATION

	STREET SIDE	LATERAL ANGLE								
		0.0	5.0	15.0	25.0	35.0	45.0	55.0	65.0	75.0 85.0
	180.0	2.	2.	2.	2.	2.	2.	2.	2.	2.
	175.0	0.	0.	1.	1.	2.	2.	3.	4.	5.
	165.0	0.	0.	0.	1.	1.	2.	2.	3.	4.
	155.0	0.	1.	1.	1.	1.	1.	2.	2.	3.
	145.0	3.	3.	3.	3.	2.	2.	3.	4.	5.
	135.0	7.	7.	7.	6.	6.	6.	6.	7.	9.
	125.0	14.	14.	13.	13.	13.	13.	14.	14.	15.
	115.0	19.	19.	20.	21.	23.	23.	23.	22.	22.
	105.0	25.	25.	27.	32.	34.	35.	35.	33.	30.
	95.0	35.	36.	45.	54.	60.	62.	61.	56.	48.
	90.0	46.	49.	65.	83.	95.	99.	96.	87.	71.
	87.5	57.	63.	84.	111.	129.	136.	130.	115.	91.
	85.0	77.	83.	108.	150.	187.	203.	187.	157.	117.
V	82.5	108.	116.	147.	212.	277.	312.	282.	224.	161.
E	80.0	163.	174.	209.	295.	390.	465.	411.	321.	234.
R	77.5	244.	260.	297.	398.	534.	610.	563.	439.	339.
T	75.0	361.	373.	412.	511.	638.	733.	680.	547.	450.
I	72.5	460.	473.	499.	569.	706.	824.	756.	619.	540.
C	70.0 <<	515.	526.	552.	628.	756.	843.	782.	668.	606.
A	67.5	581.	596.	627.	684.	757.	794.	753.	691.	657.
L	65.0	644.	657.	681.	699.	705.	685.	671.	670.	674.
	62.5	671.	681.	687.	666.	614.	554.	566.	612.	643.
A	60.0	645.	650.	643.	589.	506.	433.	461.	533.	573.
N	57.5	570.	571.	555.	488.	403.	348.	372.	436.	475.
G	55.0	463.	461.	444.	382.	326.	293.	309.	350.	372.
L	52.5	356.	355.	341.	303.	277.	264.	269.	284.	290.
E	50.0	264.	265.	263.	253.	251.	249.	247.	243.	233.
	47.5	207.	211.	218.	225.	236.	241.	235.	219.	201.
	45.0	178.	184.	195.	210.	226.	233.	226.	205.	184.
	42.5	165.	171.	183.	199.	218.	225.	216.	194.	174.
	40.0	157.	165.	175.	189.	208.	214.	204.	184.	167.
	37.5	154.	160.	169.	182.	196.	201.	191.	174.	161.
	35.0	149.	156.	163.	171.	182.	186.	176.	163.	154.
	30.0	135.	141.	144.	145.	144.	143.	140.	136.	135.
	25.0	107.	112.	112.	108.	104.	99.	101.	104.	107.
	20.0	70.	75.	77.	74.	71.	69.	71.	73.	75.
	15.0	44.	48.	53.	52.	52.	52.	52.	52.	54.
	10.0	27.	29.	34.	36.	39.	40.	39.	37.	35.
	5.0	14.	12.	12.	10.	10.	10.	11.	12.	14.
	0.0	1.	1.	1.	1.	1.	1.	1.	1.	1.

||

PLANE OF MAXIMUM CANDELA

CONE OF MAXIMUM CANDELA

REPORT NUMBER: RAB03692

PAGE: 8 OF 11

ISSUE DATE: 08/11/17

DATE SAMPLE TESTED: 08/11/17

PREPARED FOR: RAB LIGHTING INC. RC LIGHTING

### CANDELA TABULATION

HOUSE SIDE		LATERAL ANGLE								
		90.0	95.0	105.0	115.0	125.0	135.0	145.0	155.0	165.0 175.0
	180.0	2.	2.	2.	2.	2.	2.	2.	2.	2.
	175.0	5.	5.	5.	5.	5.	5.	5.	5.	5.
	165.0	4.	4.	4.	4.	4.	4.	4.	4.	4.
	155.0	3.	4.	3.	3.	3.	3.	3.	3.	3.
	145.0	5.	5.	5.	5.	4.	3.	3.	3.	3.
	135.0	10.	10.	9.	8.	7.	5.	4.	3.	3.
	125.0	16.	16.	16.	14.	12.	10.	7.	5.	4.
	115.0	22.	22.	22.	21.	18.	16.	12.	8.	5.
	105.0	29.	29.	28.	27.	25.	22.	18.	13.	7.
	95.0	40.	40.	40.	40.	38.	37.	33.	25.	15.
	90.0	53.	53.	55.	57.	59.	57.	53.	40.	23.
	87.5	67.	67.	72.	74.	77.	78.	74.	53.	28.
	85.0	90.	88.	95.	101.	112.	114.	105.	69.	32.
V	82.5	126.	124.	137.	151.	170.	170.	146.	86.	37.
E	80.0	192.	189.	209.	230.	254.	240.	188.	101.	39.
R	77.5	293.	289.	312.	333.	347.	310.	226.	109.	40.
T	75.0	408.	404.	420.	427.	423.	366.	249.	110.	40.
I	72.5	506.	501.	509.	505.	486.	403.	249.	105.	40.
C	70.0 <<	574.	570.	576.	565.	525.	405.	229.	96.	40.
A	67.5	628.	626.	626.	601.	524.	372.	197.	88.	40.
L	65.0	656.	653.	639.	591.	479.	318.	164.	81.	41.
	62.5	639.	636.	605.	536.	403.	255.	138.	78.	41.
A	60.0	578.	575.	532.	450.	322.	201.	121.	76.	42.
N	57.5	484.	481.	433.	355.	245.	164.	111.	74.	42.
G	55.0	377.	373.	332.	267.	192.	142.	106.	72.	41.
L	52.5	287.	282.	248.	205.	161.	130.	102.	71.	40.
E	50.0	220.	215.	194.	171.	146.	124.	99.	68.	39.
	47.5	183.	178.	166.	154.	138.	120.	95.	66.	38.
	45.0	165.	160.	153.	145.	133.	116.	91.	62.	36.
	42.5	157.	152.	146.	139.	128.	111.	86.	58.	33.
	40.0	151.	146.	141.	135.	124.	106.	81.	53.	31.
	37.5	147.	142.	137.	130.	118.	99.	74.	48.	29.
	35.0	141.	136.	131.	124.	111.	91.	67.	44.	28.
	30.0	126.	121.	115.	106.	90.	72.	51.	36.	25.
	25.0	100.	94.	87.	80.	66.	52.	39.	29.	23.
	20.0	68.	63.	59.	53.	44.	38.	31.	26.	23.
	15.0	45.	40.	38.	35.	32.	29.	26.	23.	22.
	10.0	30.	28.	27.	26.	25.	23.	20.	18.	13.
	5.0	19.	19.	15.	13.	10.	8.	6.	5.	4.
	0.0	1.	1.	1.	1.	1.	1.	1.	1.	1.

CONE OF MAXIMUM CANDELA



REPORT NUMBER: RAB03692

PAGE: 9 OF 11

ISSUE DATE: 08/11/17

DATE SAMPLE TESTED: 08/11/17

PREPARED FOR: RAB LIGHTING INC. RC LIGHTING

### CANDELA TABULATION

HOUSE SIDE		LATERAL ANGLE								
		180.0	185.0	195.0	205.0	215.0	225.0	235.0	245.0	255.0 265.0
	180.0	2.	2.	2.	2.	2.	2.	2.	2.	2.
	175.0	5.	5.	4.	3.	3.	2.	2.	1.	1. 0.
	165.0	3.	4.	3.	3.	2.	2.	1.	1.	1. 0.
	155.0	3.	3.	2.	2.	2.	1.	1.	1.	1. 0.
	145.0	3.	3.	2.	2.	2.	1.	1.	1.	1. 1.
	135.0	3.	3.	3.	2.	2.	2.	2.	2.	1. 1.
	125.0	3.	3.	3.	3.	3.	4.	3.	3.	2. 2.
	115.0	4.	4.	4.	4.	5.	5.	5.	4.	3. 2.
	105.0	4.	4.	4.	5.	5.	6.	5.	4.	3. 2.
	95.0	4.	4.	4.	5.	6.	5.	5.	4.	3. 2.
	90.0	4.	4.	4.	5.	5.	5.	4.	4.	3. 2.
	87.5	4.	4.	4.	4.	4.	5.	4.	4.	3. 2.
	85.0	4.	4.	4.	4.	4.	4.	4.	3.	3. 2.
V	82.5	5.	4.	4.	4.	4.	4.	4.	4.	3. 2.
E	80.0	5.	3.	4.	4.	4.	4.	4.	3.	3. 2.
R	77.5	6.	4.	4.	4.	4.	4.	4.	3.	3. 2.
T	75.0	7.	3.	3.	3.	3.	4.	3.	3.	2. 2.
I	72.5	8.	4.	3.	3.	4.	4.	3.	3.	2. 3.
C	70.0 <<	8.	4.	3.	3.	3.	3.	3.	3.	2. 3.
A	67.5	10.	4.	3.	3.	4.	3.	3.	3.	2. 3.
L	65.0	10.	5.	3.	3.	3.	3.	3.	2.	2. 3.
	62.5	10.	5.	3.	3.	3.	3.	3.	3.	2. 4.
A	60.0	11.	5.	3.	3.	3.	3.	3.	2.	2. 4.
N	57.5	11.	5.	3.	3.	3.	3.	3.	2.	2. 4.
G	55.0	11.	5.	3.	3.	3.	3.	3.	2.	2. 5.
L	52.5	11.	5.	3.	3.	3.	3.	3.	2.	3. 5.
E	50.0	11.	5.	3.	3.	3.	3.	3.	3.	2. 5.
	47.5	11.	6.	4.	3.	3.	3.	3.	3.	3. 5.
	45.0	11.	6.	3.	3.	3.	3.	3.	3.	3. 5.
	42.5	11.	6.	3.	3.	3.	3.	3.	3.	3. 5.
	40.0	11.	6.	3.	3.	3.	3.	3.	2.	3. 5.
	37.5	10.	5.	3.	3.	3.	3.	2.	2.	2. 5.
	35.0	11.	6.	3.	3.	3.	3.	2.	2.	3. 5.
	30.0	10.	6.	3.	3.	3.	3.	3.	2.	3. 5.
	25.0	10.	5.	3.	3.	3.	2.	2.	2.	2. 5.
	20.0	10.	5.	3.	3.	3.	2.	2.	3.	3. 5.
	15.0	8.	5.	3.	3.	2.	2.	2.	2.	2. 4.
	10.0	5.	4.	3.	2.	2.	2.	2.	2.	2. 3.
	5.0	3.	2.	2.	1.	1.	1.	1.	1.	1. 1.
	0.0	1.	1.	1.	1.	1.	1.	1.	1.	1. 1.

CONE OF MAXIMUM CANDELA

REPORT NUMBER: RAB03692

PAGE: 10 OF 11

ISSUE DATE: 08/11/17

DATE SAMPLE TESTED: 08/11/17

PREPARED FOR: RAB LIGHTING INC. RC LIGHTING

### CANDELA TABULATION

STREET SIDE		LATERAL ANGLE										
		270.0	275.0	285.0	295.0	305.0	315.0	325.0	335.0	345.0	355.0	360.0
V E R T I C A L  A N G L E	180.0	2.	2.	2.	2.	2.	2.	2.	2.	2.	2.	2.
	175.0	0.	0.	0.	0.	0.	0.	0.	0.	0.	0.	0.
	165.0	0.	0.	0.	0.	0.	0.	0.	0.	0.	0.	0.
	155.0	0.	0.	0.	0.	0.	0.	0.	0.	0.	0.	0.
	145.0	1.	1.	0.	0.	0.	0.	1.	2.	2.	3.	3.
	135.0	1.	1.	1.	1.	1.	3.	4.	5.	6.	7.	7.
	125.0	2.	2.	1.	2.	5.	7.	9.	12.	13.	14.	14.
	115.0	2.	2.	2.	5.	9.	13.	16.	18.	19.	19.	19.
	105.0	2.	2.	5.	11.	15.	19.	22.	24.	25.	25.	25.
	95.0	3.	4.	12.	22.	28.	33.	34.	35.	35.	35.	35.
	90.0	2.	5.	19.	35.	45.	50.	52.	50.	47.	46.	46.
	87.5	2.	7.	24.	47.	62.	68.	66.	66.	62.	60.	57.
	85.0	3.	8.	30.	62.	89.	99.	94.	89.	81.	78.	77.
	82.5	4.	10.	36.	81.	126.	148.	141.	132.	116.	110.	108.
	80.0	4.	11.	40.	100.	168.	218.	210.	198.	175.	166.	163.
	77.5	5.	12.	43.	114.	214.	291.	309.	290.	261.	250.	244.
	75.0	6.	13.	43.	121.	254.	357.	389.	393.	374.	363.	361.
	72.5	7.	14.	42.	119.	271.	413.	458.	462.	459.	462.	460.
	70.0<<	8.	15.	42.	110.	264.	437.	523.	533.	519.	518.	515.
	67.5	9.	17.	42.	100.	237.	423.	554.	595.	591.	585.	581.
	65.0	9.	17.	42.	90.	199.	373.	539.	619.	642.	642.	644.
	62.5	10.	19.	42.	84.	164.	307.	479.	592.	651.	663.	671.
	60.0	11.	20.	42.	80.	139.	241.	393.	523.	609.	633.	645.
	57.5	11.	20.	43.	78.	123.	190.	307.	423.	521.	553.	570.
	55.0	11.	20.	42.	76.	114.	158.	233.	324.	409.	444.	463.
	52.5	11.	20.	41.	74.	108.	141.	185.	243.	307.	339.	356.
	50.0	11.	20.	40.	71.	104.	132.	159.	195.	230.	251.	264.
	47.5	11.	20.	38.	68.	101.	126.	146.	165.	185.	197.	207.
	45.0	11.	19.	36.	65.	97.	121.	139.	152.	163.	172.	178.
	42.5	11.	19.	34.	60.	92.	117.	135.	146.	153.	159.	165.
	40.0	11.	18.	31.	55.	85.	111.	130.	141.	147.	152.	157.
	37.5	10.	17.	29.	49.	78.	105.	125.	136.	143.	147.	154.
	35.0	11.	17.	27.	44.	70.	97.	118.	130.	138.	143.	149.
	30.0	10.	16.	23.	35.	53.	75.	97.	113.	123.	129.	135.
	25.0	10.	15.	21.	27.	38.	51.	69.	83.	94.	99.	107.
	20.0	10.	15.	19.	23.	28.	35.	44.	51.	59.	63.	70.
15.0	9.	12.	18.	20.	22.	25.	29.	32.	35.	38.	44.	
10.0	5.	6.	10.	13.	16.	19.	22.	23.	24.	25.	27.	
5.0	1.	1.	2.	3.	4.	4.	6.	7.	10.	11.	14.	
0.0	1.	1.	1.	1.	1.	1.	1.	1.	1.	1.	1.	

CONE OF MAXIMUM CANDELA

REPORT NUMBER: RAB03692

PAGE: 11 OF 11

ISSUE DATE: 08/11/17

DATE SAMPLE TESTED: 08/11/17

PREPARED FOR: RAB LIGHTING INC. RC LIGHTING

### 5-DEGREE

#### ZONAL LUMEN SUMMARY

0- 5	0
5- 10	1
10- 15	3
15- 20	5
20- 25	10
25- 30	16
30- 35	23
35- 40	30
40- 45	37
45- 50	46
50- 55	67
55- 60	108
60- 65	152
65- 70	173
70- 75	158
75- 80	112
80- 85	59
85- 90	31
90- 95	19
95-100	13
100-105	10
105-110	9
110-115	7
115-120	6
120-125	4
125-130	3
130-135	2
135-140	1
140-145	1
145-150	1
150-155	0
155-160	0
160-165	0
165-170	0
170-175	0
175-180	0

### 10-DEGREE

#### ZONAL LUMEN SUMMARY

0- 10	1
0- 20	9
0- 30	35
0- 40	88
0- 50	171
0- 60	346
0- 70	671
0- 80	940
0- 90	1030
0-100	1062
0-110	1081
0-120	1094
0-130	1102
0-140	1105
0-150	1107
0-160	1108
0-170	1108
0-180	1109

REPORT NUMBER: RAB03659  
DATE: 7/26/2017  
PREPARED FOR: RAB LIGHTING INC. RC LIGHTING  
CATALOG NUMBER: BLED12Y, BLED12Y/D10 (42" SQUARE BOLLARD W/LED @ 90-DEGREES)

Page 1 of 4

ADDRESS: 170 LUDLOW AVE, NORTHVALE, NJ 07647

LUMINAIRE: EXTRUDED BROWN PAINTED SQUARE METAL LOWER HOUSING, CAST METAL TOP, CAST FINNED METAL HEAT SINK WITH WHITE PAINTED INTERIOR, MOLDED SPECULAR FINISHED PLASTIC REFLECTOR WITH WHITE CORNER DIVIDERS CREATING 4 OPTICAL COMPARTMENTS, 2 OPTICAL COMPARTMENT CONTAINS 1 WHITE CIRCUIT BOARD WITH 5 LEDS, FROSTED PLASTIC LENS, CAST BROWN PAINTED METAL BOTTOM.

LAMP: TEN LIGHT EMITTING DIODES (LEDS).

DRIVER: RDD-15W-032SE-A0350

OBJECT OF TEST: DATA SHOWN IS ABSOLUTE FOR THE SAMPLE PROVIDED AT THE RATED INPUT VOLTAGES (277.0 AND 120.0 VAC, 60Hz) TO THE TEST SAMPLE.

INSTRUMENTS:	GWINSTEK PROGRAMMABLE AC POWER SOURCE APS-7100	Calibration Due: N/A
	CHROMA PROGRAMMABLE DIGITAL POWER METER MODEL 66202	3/01/18
	OCEAN OPTICS QE65PRO Spectroradiometer	06/22/18
	RAB 2.0 meter Diameter Integrating Sphere, 4PI Geometry	06/22/18

OBJECT OF TEST: Measure the Absolute Flux in lumens\*, Total Radiant Flux\*, Spectral Power Distribution (SPD), Correlated Color Temperature (CCT), Color Rendering Indices (CRIa,1-14), Chromaticity Coordinates (x,y; u'v'), ANSI C78.377 Duv, and electrical data including ANSI C82.77-2002 Power Factor (PF), and Total Harmonic Distortion (THD) to the test sample. Measure electrical data including Total Harmonic Distortion (THD) at maximum nominal rated input voltage. Report Off-State Power.

PROCEDURE: The test sample was mounted inside the integrating sphere, energized, and allowed to stabilize. After stabilization occurred, measurements were taken. In order to measure mean performance, multiple data sets were recorded and averaged. Readings were taken with the test sample operating at 60 HZ input in a 25 +/-1 degree Celsius free air ambient and in accordance with IESNA LM-79-08. Electrical data was also recorded at maximum nominal rated input voltage (120.0 VAC). All data are traceable to the National Institute of Standards and Technology. Off-State Power was reported with no voltage applied to the sample.

\*NOTE: Proper calibration of integrating spheres for measuring total flux output of non-directional samples will produce reliable, repeatable results within the calibration tolerances of the equipment used. However, measurement of test samples with significant self absorption and/or directional output, even when these effects are compensated for, are likely to have a greater variation in results compared to the flux output calculated from a goniophotometric exploration since these artifacts do not affect the goniophotometric results.

RESULTS: (continued subsequent pages)

Checked X.CAO

Approved D.WANG-MUNSON  
Lighting Engineer

REPORT NUMBER: RAB03659  
 DATE: 7/26/2017  
 PREPARED FOR: RAB LIGHTING INC. RC LIGHTING  
 CATALOG NUMBER: BLED12Y, BLED12Y/D10 (42" SQUARE BOLLARD W/LED @ 90-DEGREES)

Page 2 of 4

### RESULTS:

PHOTOMETRIC	
Total Integrated Flux (lumens)	1109 *
SPECTRORADIOMETRIC	
Observer	CIE 1931 2 degree
Chromaticity Ordinate x	0.4392
Chromaticity Ordinate y	0.4085
Observer	CIE 1976 2 degree
Chromaticity Ordinate u'	0.2501
Chromaticity Ordinate v'	0.5235
Correlated Color Temp CCT (K)	2998
ANSI C78.377-2008 Duv	0.001
Total Radiant Flux (milliWatts)	3376 *
ELECTRICAL	
Input Voltage (Volts AC)	277.0
Input Current (Amps AC)	0.047
Input Power (Watts)	11.8
Input Power Factor (%)	90.0
Input Current THD (%)	21.9
Input Voltage THD (%)	0.2
EFFICACY (Lumens/Watt)	
	94.0
ELECTRICAL AT MAX NONIMAL INPUT	
Input Voltage (Volts AC)	120.0
Input Current (Amps AC)	0.096
Input Power (Watts)	11.3
Input Power Factor (%)	97.8
Input Current THD (%)	11.7
Input Voltage THD (%)	0.2
Off-State Power (Watts)	
	0.0

COLOR RENDERING INDICES	CRI
Ra (Average 1-8)	84
R1 Light greyish red	82
R2 Dark greyish yellow	92
R3 Strong yellowish green	96
R4 Moderate yellowish green	82
R5 Light bluish green	83
R6 Light blue	92
R7 Light violet	83
R8 Light reddish purple	60
R9 Strong red	12
R10 Strong yellow	83
R11 Strong green	81
R12 Strong blue	74
R13 Light yellowish pink (skin)	85
R14 Moderate olive green (leaf)	98

### \*NOTE:

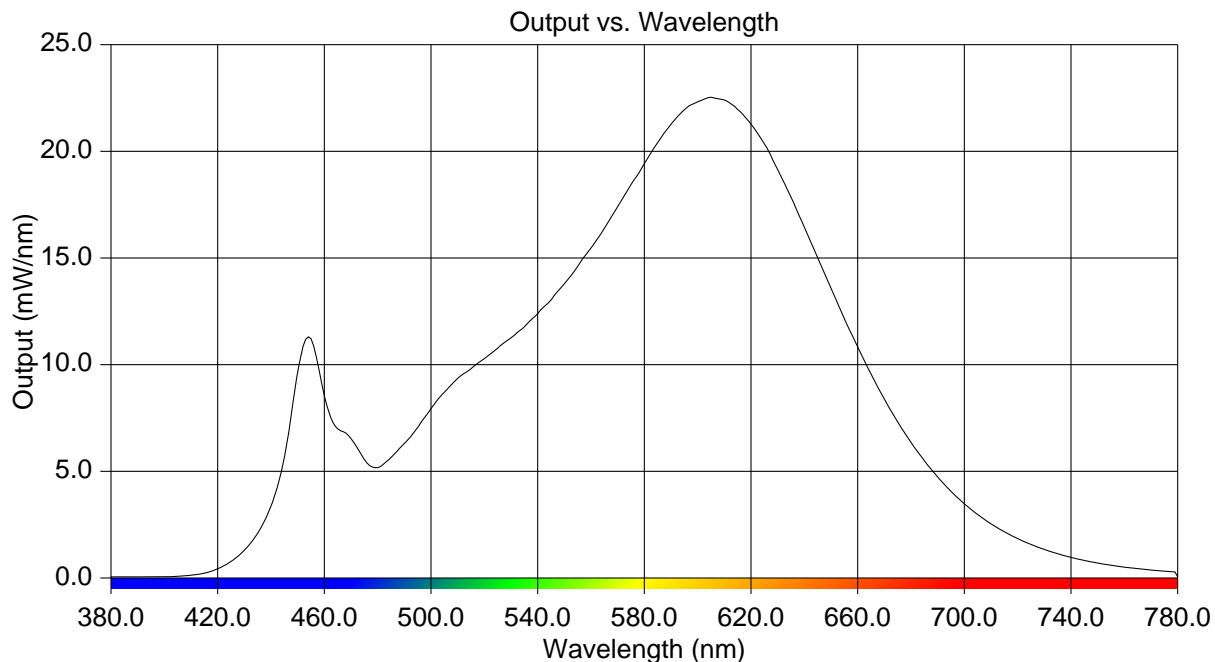
Proper calibration of integrating spheres for measuring total flux output of non-directional samples will produce reliable, repeatable results within the calibration tolerances of the equipment used. However, measurement of test samples with significant self absorption and/or directional output, even when these effects are compensated for, are likely to have a greater variation in results compared to the flux output calculated from a goniophotometric exploration since these artifacts do not affect the goniophotometric results.

REPORT NUMBER: RAB03659  
 DATE: 7/26/2017  
 PREPARED FOR: RAB LIGHTING INC. RC LIGHTING  
 CATALOG NUMBER: BLED12Y, BLED12Y/D10 (42" SQUARE BOLLARD W/LED @ 90-DEGREES)

Page 3 of 4

### RESULTS:

Wavelength	mW per nm	Wavelength	mW per nm	Wavelength	mW per nm
380	0.048	515	9.808	650	13.570
385	0.050	520	10.278	655	12.158
390	0.051	525	10.769	660	10.843
395	0.051	530	11.257	665	9.543
400	0.061	535	11.771	670	8.388
405	0.075	540	12.389	675	7.309
410	0.123	545	13.034	680	6.355
415	0.224	550	13.790	685	5.491
420	0.425	555	14.605	690	4.733
425	0.763	560	15.454	695	4.062
430	1.303	565	16.384	700	3.489
435	2.109	570	17.398	705	2.976
440	3.336	575	18.440	710	2.534
445	5.690	580	19.441	715	2.166
450	9.596	585	20.423	720	1.848
455	11.219	590	21.274	725	1.568
460	8.538	595	21.948	730	1.336
465	6.997	600	22.312	735	1.133
470	6.527	605	22.537	740	0.965
475	5.555	610	22.415	745	0.823
480	5.171	615	21.959	750	0.704
485	5.648	620	21.275	755	0.596
490	6.307	625	20.368	760	0.510
495	7.054	630	19.145	765	0.435
500	7.943	635	17.870	770	0.372
505	8.706	640	16.453	775	0.319
510	9.356	645	15.032	780	0.048



REPORT NUMBER: RAB03659  
DATE: 7/26/2017  
PREPARED FOR: RAB LIGHTING INC. RC LIGHTING  
CATALOG NUMBER: BLED12Y, BLED12Y/D10 (42" SQUARE BOLLARD W/LED @ 90-DEGREES)

Page 4 of 4

## CIE Chromaticity Diagram

