

INSTRUCTIONS

BLED® FIELD-ADJUSTABLE INSTALLATION

RAB®

RAB Lighting is committed to creating high-quality, affordable, well-designed and energy-efficient LED lighting and controls that make it easy for electricians to install and end users to save energy. We'd love to hear your comments. Please call the Marketing Department at 888-RAB-1000 or email: marketing@rablighting.com



IMPORTANT

READ CAREFULLY BEFORE INSTALLING FIXTURE. RETAIN THESE INSTRUCTIONS FOR FUTURE REFERENCE.

RAB fixtures must be wired in accordance with the National Electrical Code and all applicable local codes. Proper grounding is required for safety. THIS PRODUCT MUST BE INSTALLED IN ACCORDANCE WITH THE APPLICABLE INSTALLATION CODE BY A PERSON FAMILIAR WITH THE CONSTRUCTION AND OPERATION OF THE PRODUCT AND THE HAZARDS INVOLVED.

WARNING: Make certain power is OFF before installing or maintaining fixture. No user serviceable parts inside.

LOCATION

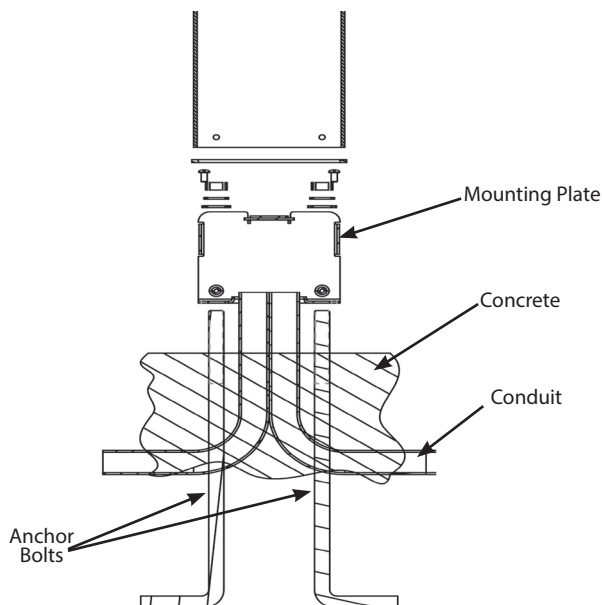
1. The **Bollard** should be mounted to a firm level surface.
2. **Anchor bolts** may be used in new concrete installations. Use the provided template (*Fig. 5*).
3. For all other applications use **Anchors** suitable for the mounting surface.

ANCHOR BOLTS INSTALLATION

CAUTION: Install according to all applicable local codes.

1. Install (2) **Anchor Bolts** in concrete foundation (*by others*) using the template provided (*Fig. 5*). **Mounting Plate** may be used as template. **Anchor Bolts** should protrude no more than 3". (*Fig. 1*).

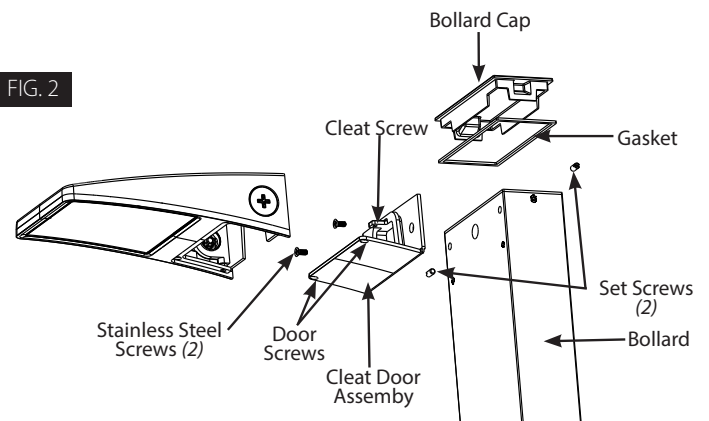
FIG. 1



MOUNTING FIXTURES

1. Loosen (2) **Door Screws** and open **Door** as shown in *Fig. 2*.
2. Loosen (1) **Cleat Screw**. Separate **Cleat/Door Assembly** from fixture. Set desired Color Temperature (CCT), Power (W) and/or Photocell ON/OFF position (*see Field Adjustment instructions, Fig. 4*).
3. Secure **Cleat/Door Assembly** to the **Bollard** using (2) **Stainless Steel Screws** (*provided*).
4. Slide fixture on **Cleat/Door Assembly** and secure using (1) **Cleat Screw**.
5. Make the necessary wiring connections and knot the wires for strain relief. Wire the fixture using UL listed wire connectors according to NEC and local codes. See wiring diagram, *Fig. 6*.
6. Close the **Door**. Tighten **Screws**.
7. Install the **Bollard Cap** and **Gasket** and tighten (2) **Set Screws**.

FIG. 2



INSTRUCTIONS

BLEDB® FIELD-ADJUSTABLE INSTALLATION



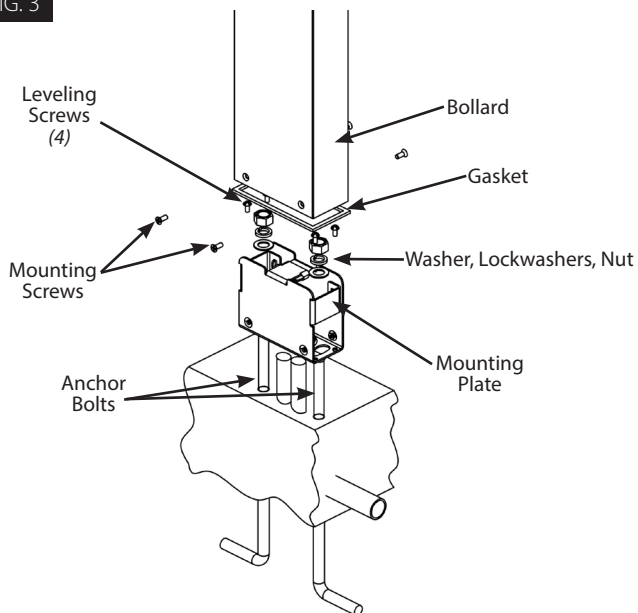
RAB Lighting is committed to creating high-quality, affordable, well-designed and energy-efficient LED lighting and controls that make it easy for electricians to install and end users to save energy. We'd love to hear your comments. Please call the Marketing Department at 888-RAB-1000 or email: marketing@rablighting.com

MOUNTING PLATE

Assemble fixture to **Bollard** before mounting the **Bollard** to the **Mounting Plate**.

1. Place the **Mounting Plate** over **Anchor Bolts** as shown in Fig. 3. Use **Leveling Screws** (4) or shims to level the **Mounting Plate**.
2. Tighten assembly using the **Washers, Lockwashers and Nut** (provided).
3. Make sure supply leads extend far enough to make fixture connections.
4. Slide **Gasket** down around the bottom of the **Mounting Plate**.
5. Use the (4) **Mounting Screws** to mount the **Bollard** to the **Mounting Plate**. Tighten securely.

FIG. 3



FIELD ADJUSTMENT

Photocell Operation:

This product is equipped with a photocell. **Photocell factory setting is set to the "OFF" position.** Should you wish to enable the Photocell "ON" feature slide the center switch to the "ON" position (Fig 4). **If the Photocell is set to the "ON" position and it is daylight it may take up to 60-seconds for the light to turn off.**

Color Temperature (CCT) Selection:

This product is equipped with 3000K, 4000K or 5000K (CCT) **Color Temperature** selection. For maximum light output use the 4000K **Color Temperature**.

Power (Wattage) Selection:

This product is equipped with power output selection.

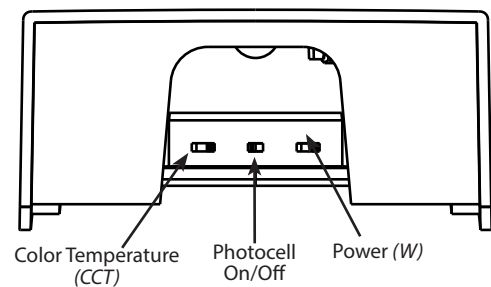
BLEDS 13/10/6W

Follow instructions below to change **Color Temperature (CCT)** **Power (W)** and/or **Photocell** operation from factory settings.

Factory Settings: BLEDS 10W / 4000K / Photocell/OFF

1. Locate the **Selector Switches** inside of housing as shown in Fig. 4.
2. Select **Color Temperature (CCT)**, **Power (W)** and/or **Photocell** ON/OFF function by sliding the respective switch to the desired setting.

FIG. 4



INSTRUCTIONS

bled® FIELD-ADJUSTABLE INSTALLATION

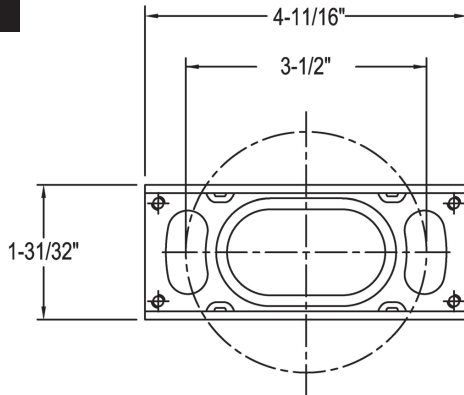


RAB Lighting is committed to creating high-quality, affordable, well-designed and energy-efficient LED lighting and controls that make it easy for electricians to install and end users to save energy. We'd love to hear your comments. Please call the Marketing Department at 888-RAB-1000 or email: marketing@rablighting.com

MOUNTING PLATE DIMENSIONS

NOT ACTUAL SIZE. Use dimensions. Use mounting plate as a template when possible (Fig. 5).

FIG. 5



CLEANING & MAINTENANCE

CAUTION: Be sure fixture temperature is cool enough to touch. Do not clean or maintain while fixture is energized.

1. Clean lens with non-abrasive glass cleaning solution.
2. Do not open the fixture to clean the LED. Do not touch the LED.

TROUBLESHOOTING

1. Check that the line voltage at the fixture is correct. Refer to wiring directions.
2. Is the fixture grounded properly?
3. Is the photocell, if used, functioning properly?

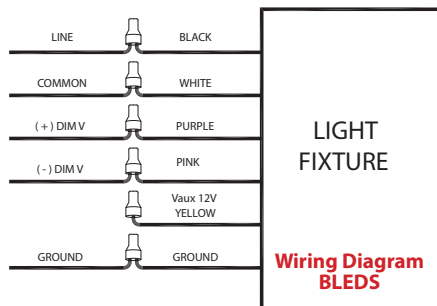
Note: These instructions do not cover all details or variations in equipment nor do they provide for every possible situation during installation, operation or maintenance.

0-10V DIMMABLE WIRING

Universal voltage driver permits operation at 120V through 277V, 50 or 60 Hz. For 0-10V dimming follow the wiring directions shown below (Fig. 6).

1. Connect the black fixture lead to the **LINE** supply lead.
2. Connect the white fixture lead to the **COMMON** supply lead.
3. Connect the **GROUND** wire from fixture to supply ground.
Do NOT connect the **GROUND** of the dimming fixture to the output.
4. Connect the purple fixture lead to the (V+) DIM lead.
5. Connect the pink fixture lead to the (V-) DIM lead.
6. Cap the yellow fixture lead, if present. Do NOT connect.

FIG. 6



© 2025 RAB LIGHTING Inc.

bled - IN - 0325
P-101675

Easy Answers

rablighting.com
Visit our website for product info

Tech Help Line
Call our experts: 888 722-1000

e-mail
Answered promptly - sales@rablighting.com

Free Lighting Layouts
Answered online or by request