

INSTRUCTIONS

EMERGENCY EXIT SIGN/COMBO INSTALLATION



RAB Lighting is committed to creating high-quality, affordable, well-designed and energy-efficient LED lighting and controls that make it easy for electricians to install and end users to save energy. We'd love to hear your comments. Please call the Marketing Department at 888-RAB-1000 or email: marketing@rablighting.com

**** DON'T TOSS IT—RECYCLE IT! MAKE THE SUSTAINABLE CHOICE BY RECYCLING THIS FIXTURE AT END OF LIFE WITH A LICENSED RECYCLING PROVIDER. ****



ECOMBO / ECOMBO-R
ECOMBO-S / ECOMBO-RS



ECOMBO-B
ECOMBO-R-B

IMPORTANT

READ CAREFULLY BEFORE INSTALLING FIXTURE. RETAIN THESE INSTRUCTIONS FOR FUTURE REFERENCE.

RAB fixtures must be wired in accordance with the National Electrical Code and all applicable local codes. Proper grounding is required for safety. THIS PRODUCT MUST BE INSTALLED IN ACCORDANCE WITH THE APPLICABLE INSTALLATION CODE BY A PERSON FAMILIAR WITH THE CONSTRUCTION AND OPERATION OF THE PRODUCT AND THE HAZARDS INVOLVED.

- When re-lamping, only use lamps specified in the exit sign. Using other lamp types may result in damage to the unit or unsafe conditions.
- Battery in this unit may not be fully charged. After electricity is hooked up to unit, let the battery charge for at least 24 hours. Normal operation of this unit should then take effect.

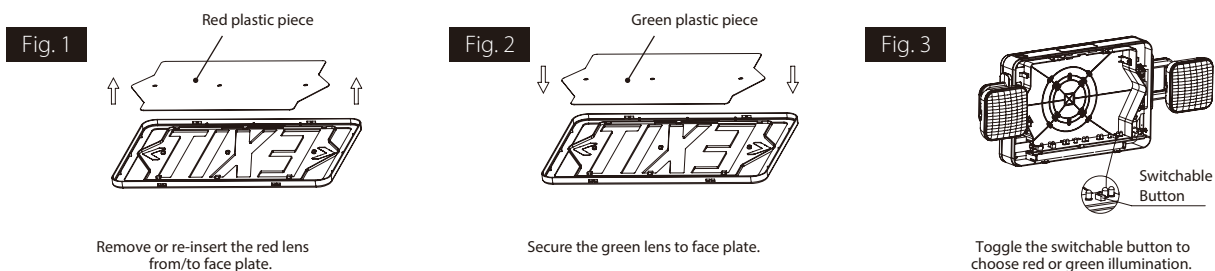
IMPORTANT SAFEGUARDS:

When using electrical equipment, basic safety precautions should always be followed including the following:
READ AND FOLLOW ALL SAFETY INSTRUCTIONS

- Do not use outdoors.
- Do not mount near gas or electric heaters.
- Equipment should be mounted in locations and at heights where it will not be subjected to tampering by unauthorized personnel.
- The use of accessory equipment not recommended by the manufacturer may cause an unsafe condition.
- Do not use this equipment for other than its intended use.
- Before wiring to power supply, turn off electricity at fuse or circuit breaker.
- Consult local building code for approved wiring and installation.
- Installation and servicing should be performed by qualified personnel.

IMPORTANT CODE COMPLIANCE INFORMATION

In accordance with NFPA 101 (*current Life Safety Code*), documented testing of your emergency lighting system must be tested monthly for a minimum of 30 seconds and annually for 90 minutes. Refer to your local codes for any additional requirements that may apply.



BACK MOUNT INSTALLATION

1. Remove EXIT stencil faceplate from housing. Remove RED lens from faceplate (see fig. A). Set aside.
2. Drill or knock out appropriate knockouts on back plate to fit junction box mounting points.
3. Drill or knock out center hole in back plate for EXIT supply wire leads.
4. Route EXIT supply wires through center hole of the back plate and make wiring connection. For 120v, use black and white wires and for 277v, use red and white wires. WARNING: Properly insulate the unused lead with a wire nut (*provided*) or other approved means.
5. Secure back plate to junction box (*hardware not included*).
6. Remove knockout chevron(s) on faceplate, re-insert RED lens to faceplate (see fig. A) (or GREEN if applicable, see fig. B). Secure EXIT stencil faceplate back onto housing.
7. Toggle the switchable to select GREEN if applicable (see fig. C).
8. Connect battery only after continuous AC power can be provided to the unit.
9. Apply continuous AC power and press "TEST" button to check operation. (See operation batteryback-up for testing procedures)

INSTRUCTIONS

EMERGENCY EXIT SIGN/COMBO INSTALLATION



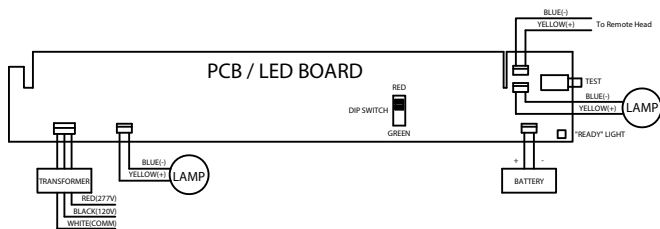
RAB Lighting is committed to creating high-quality, affordable, well-designed and energy-efficient LED lighting and controls that make it easy for electricians to install and end users to save energy. We'd love to hear your comments. Please call the Marketing Department at 888-RAB-1000 or email: marketing@rablighting.com

**** DON'T TOSS IT—RECYCLE IT! MAKE THE SUSTAINABLE CHOICE BY RECYCLING THIS FIXTURE AT END OF LIFE WITH A LICENSED RECYCLING PROVIDER. ****

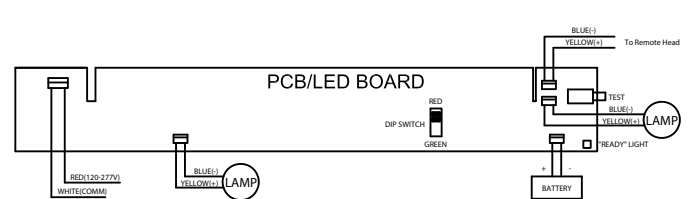
TOP MOUNT INSTALLATION (ECOMBO SERIES)

1. Remove EXIT stencil faceplate from housing. Remove RED lens from faceplate(see fig. A).Set aside.
2. Place screws (provided) in holes on the canopy.
3. Remove the mounting hole plug located on the top of the housing.
4. Route EXIT supply wires through mounting hole in top of the housing. Route EXIT supplywires through mounting canopy. Dress wires carefully through housing.
5. Route wires from junction box through metal mounting plate. Secure mounting plate tojunction box (hardware not included).
6. Make wiring connection. For 120v, use black and white wires and for 277v, use red andwhite wires WARNING: Properly insulate the unused lead with a wire nut (provided) orother approved means.
7. Push wire connections through middle metal plate and into the J-Box.
8. Secure the canopy to the steel mounting plate with screws installed in step 2.
9. Remove knockout chevron(s) on faceplate, as needed. Re-insert RED lens to faceplate (see fig. A) (or GREEN if applicable, see fig. B). Secure EXIT stencil faceplate back onto housing.
10. Toggle the switchable to select GREEN if applicable(see fig. C).
11. Connect battery only after continuous AC power can be provided to the unit.
12. Apply continuous AC power and press "TEST" button to check operation.(See operationbattery back-up for testing procedures)

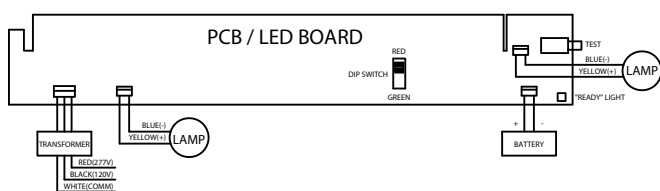
WIRING DIAGRAMS



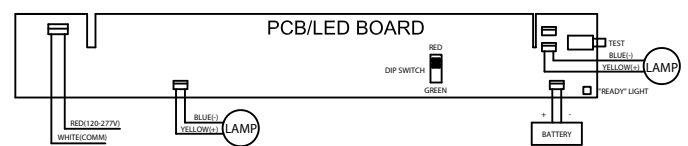
ECOMBO-R / ECOMBO-R-B



ECOMBO-RS



ECOMBO / ECOMBO-B



ECOMBO-S

SELF-DIAGNOSTICS OPERATING STATUS(ECOMBO-S / ECOMBO-RS)

1. To begin the Self-Diagnostic function, when AC power is on, press and hold the test button for 5sec-onds, the green indicator will flash, then release to reset the program timer.
2. When AC power is on, the green indicator will stay on during the battery charging process and whenfully charged.
3. If there is an AC power outage, the program timer pauses. Upon the next AC power connection,charging resumes for 24 hours before accumulating timing again, to ensure that the battery is fullycharged during the Self-Diagnostic process.
4. If both the annual and monthly inspections occur at the same time, only the annual inspection will beperformed, and the monthly inspection will be skipped.
5. When AC power is off. in emergency mode. press and hold the test switch for 2-3 seconds to stop the emergency operation, and the light will turn off.

INSTRUCTIONS

EMERGENCY EXIT SIGN/COMBO INSTALLATION



RAB Lighting is committed to creating high-quality, affordable, well-designed and energy-efficient LED lighting and controls that make it easy for electricians to install and end users to save energy. We'd love to hear your comments. Please call the Marketing Department at 888-RAB-1000 or email: marketing@rablighting.com

**** DON'T TOSS IT—RECYCLE IT! MAKE THE SUSTAINABLE CHOICE BY RECYCLING THIS FIXTURE AT END OF LIFE WITH A LICENSED RECYCLING PROVIDER. ****

SELF-DIAGNOSTICS OPERATING STATUS(*ECOMBO-S / ECOMBO-RS*)

For manual test, press test button as follows:

INITIATING ACTION	Green Indicator Display	Description
For Monthly test Press the test button once	<p>Repeating 0.5s on -0.5s off for 30 seconds</p>	Returning to a steady green light after 30 seconds
For Annually test Press the test switch twice consecutively (within 30 seconds)	<p>Repeating 0.5s on -0.5s off for 90 minutes</p>	Returning to a steady green light after 90 minutes
Press and hold the test button more than 2 seconds	Returning to a steady red light	Cancels remainder of test

For Self-Diagnostic, under normal operating conditions:

When the main power in on	Green Indicator Display	Description
For Monthly test Charging after 30days(+2days)	<p>Repeating 0.5s on -0.5s off for 30 seconds</p>	Returning to a steady green light after 30 seconds
For Annually test Charging after 360days(+5days)	<p>Repeating 0.5s on -0.5s off for 90 minutes</p>	Returning to a steady green light after 90 minutes

*Remark: in the event of a fault, the AC power will be automatically disconnected, and the product will switch to emergency mode.

INSTRUCTIONS

EMERGENCY EXIT SIGN/COMBO INSTALLATION



RAB Lighting is committed to creating high-quality, affordable, well-designed and energy-efficient LED lighting and controls that make it easy for electricians to install and end users to save energy. We'd love to hear your comments. Please call the Marketing Department at 888-RAB-1000 or email: marketing@rablighting.com

**** DON'T TOSS IT—RECYCLE IT! MAKE THE SUSTAINABLE CHOICE BY RECYCLING THIS FIXTURE AT END OF LIFE WITH A LICENSED RECYCLING PROVIDER. ****

SELF-DIAGNOSTICS OPERATING STATUS(*ECOMBO-S / ECOMBO-RS*)

In the event the Self-Diagnostic Controller detects a malfunction:

Alert Codes	Red Indicator Display	Description
	Remain constantly ON	Battery disconnected when the mainpower is on
	Repeating 0.2s on - 1s off	Battery is not charging when themain power is on
	Repeating 0.2s on / 0.3s off - 0.2s on / 1s off	ALTS fault during annual/monthlytesting (battery capacity insufficient)
	Repeating 0.2s on / 0.3s off - 0.2s on / 0.3s off - 0.2s on / 1s off	Emergency lamp fault (*including remote head's lamp faultif the fixture has remote capability)
	Repeating 0.2s on / 0.3s off - 0.2s on / 0.3s off - 0.2s on / 0.3s off - 0.2s on / 1s off	LED board for Exit fault(for Exit Signs only)

Fault indication priority: Red light constantly ON > Red light flashes once > Red light flashes twice > Red light flashes three times > Red light flashes four times.



© 2026 RAB LIGHTING Inc.
Cranbury, New Jersey 08512 USA

Easy Answers

rablighting.com
Visit our website for product info

Tech Help Line
Call our experts: 888 722-1000

e-mail
Answered promptly - sales@rablighting.com

Free Lighting Layouts
Answered online or by request

EXIT-IN-0126
P-102316

RAB WARRANTY: RAB's warranty is subject to all terms and conditions found at rablighting.com/warranty.