

INSTRUCTIONS

ENTRA™ FIELD-ADJUSTABLE INSTALLATION



RAB Lighting is committed to creating high-quality, affordable, well-designed and energy-efficient LED lighting and controls that make it easy for electricians to install and end users to save energy. We'd love to hear your comments. Please call the Marketing Department at 888-RAB-1000 or email: marketing@rablighting.com



IMPORTANT

READ CAREFULLY BEFORE INSTALLING FIXTURE. RETAIN THESE INSTRUCTIONS FOR FUTURE REFERENCE.

RAB fixtures must be wired in accordance with the National Electrical Code and all applicable local codes. Proper grounding is required for safety. THIS PRODUCT MUST BE INSTALLED IN ACCORDANCE WITH THE APPLICABLE INSTALLATION CODE BY A PERSON FAMILIAR WITH THE CONSTRUCTION AND OPERATION OF THE PRODUCT AND THE HAZARDS INVOLVED

CAUTION: For proper weatherproof function all gaskets must be seated properly and all screws inserted and tightened firmly. Apply weatherproof silicone sealant between mounting surface and back housing. This is especially important with an uneven wall surface. Silicone all plugs and unused conduit entries.

WARNING: Make certain power is OFF before installing the fixture. No user serviceable parts inside.

Suitable for Wet locations.

Wall Mount only.

MOUNTING

1. Open **Housing Cover** by loosening (1) **Cover Screw** and open **Housing Cover**. **Housing Cover** will stay in position on full open (Fig. 1).
2. Use the **Drill Template** (Fig. 2) on the inside **Back Housing** surface to match most standard Junction Boxes
3. Check that the **Wall Gasket** is properly placed.
4. Connect the fixture wires to the supply wires making sure to use correct UL rated wires connectors as required by NEC to complete any electrical splices and connections. See wiring diagram as shown in Fig. 5.
5. Bundle the wires in a tight group to be moved out of the way. Make sure the **Housing Gasket** is properly seated. Close the **Housing Cover** making sure not to pinch the wires. Tighten **Cover Screw**.
6. Silicone all plugs and unused conduit entries. If the mounting surface is irregular, use caulk to seal any gaps around the **Housing**.

Fig. 1

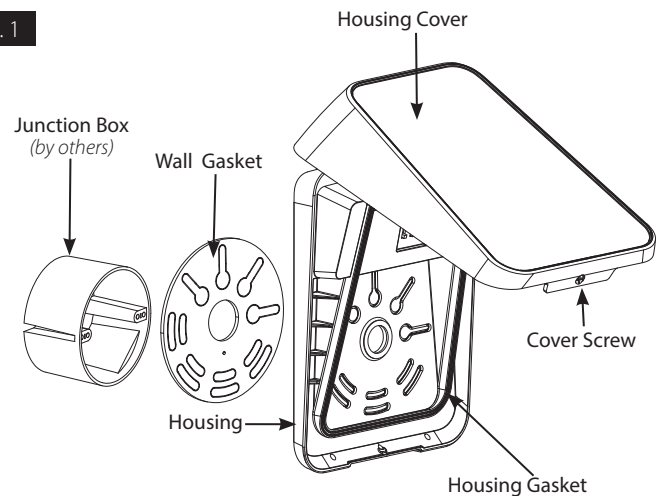
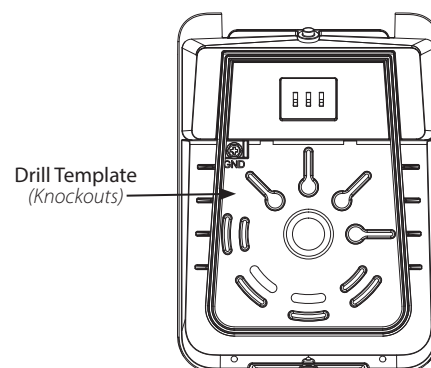


Fig. 2



INSTRUCTIONS

ENTRA™ FIELD-ADJUSTABLE INSTALLATION



RAB Lighting is committed to creating high-quality, affordable, well-designed and energy-efficient LED lighting and controls that make it easy for electricians to install and end users to save energy. We'd love to hear your comments. Please call the Marketing Department at 888-RAB-1000 or email: marketing@rablighting.com

FIELD ADJUSTMENT

Photocell Operation:

This product is equipped with a photocell. Should you wish to disable this feature, slide the switch to the "Off" position. **If the Photocell is set to the "ON" position and it is daylight it may take up to 60 seconds for the light to turn off.**

Color Temperature (CCT) Selection:

This product is equipped with 3000, 4000 and 5000K CCT color temperature selection. For maximum light output use the 4000K Color Temperature.

Power (Wattage) Selection:

This product is equipped with Power (W) output selection 14/11/7W.

Follow instructions below to change **Photocell ON/OFF** function, **Color Temperature (CCT)** and/or **Power (W)** from factory settings.

Factory Settings:

14W, 4000K, Photocell/OFF

1. Locate the **Selector Switches** for Field-Adjustment inside housing as shown in Fig. 3.
2. Select **Power (W)**, **Color Temperature (CCT)** and/or **Photocell On/Off** function by sliding the respective switch to the desired setting (Fig. 4).

Fig. 3

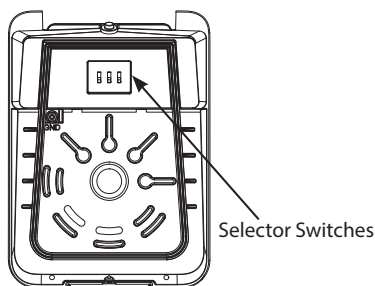
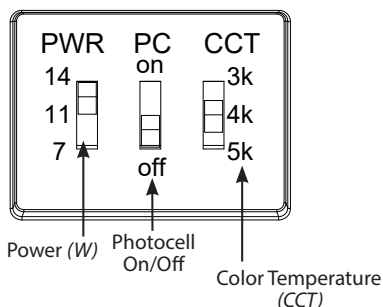


Fig. 4

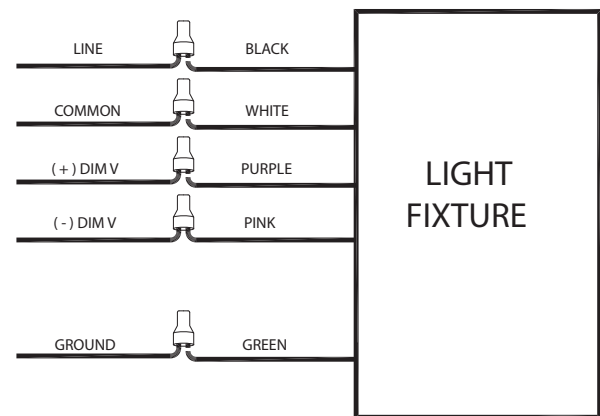


ON/OFF WIRING

Universal voltage driver permits operation at 120V through 277V, 50 or 60 Hz. Fig. 5.

1. Connect the black fixture lead to the **LINE** supply lead.
2. Connect the white fixture lead to the **COMMON** supply lead.
3. Connect the **GROUND** wire from fixture to supply ground.
4. Connect the purple fixture lead to the (V+) **DIM** lead.
5. Connect the pink fixture lead to the (V-) **DIM** lead.

Fig. 5



CLEANING

CAUTION: Be sure fixture temperature is cool enough to touch. Do not clean or maintain while fixture is energized.

1. Clean lens with non-abrasive cleaning solution.
2. Do not open the fixture to clean the LED. Do not touch the LED.

TROUBLESHOOTING

1. Check that the line voltage at fixture is correct. Refer to wiring directions.
2. Is the fixture grounded properly?

Note: These instructions do not cover all details or variations in equipment nor do they provide for every possible situation during installation, operation or maintenance.