

INSTRUCTIONS

GAMERGB INSTALLATION



RAB Lighting is committed to creating high-quality, affordable, well-designed and energy-efficient LED lighting and controls that make it easy for electricians to install and end users to save energy. We'd love to hear your comments. Please call the Marketing Department at 888-RAB-1000 or email: marketing@rablighting.com



IMPORTANT

READ CAREFULLY BEFORE INSTALLING FIXTURE. RETAIN THESE INSTRUCTIONS FOR FUTURE REFERENCE. RAB fixtures must be wired in accordance with the National Electrical Code and all applicable local codes. Proper grounding is required for safety. THIS PRODUCT MUST BE INSTALLED IN ACCORDANCE WITH THE APPLICABLE INSTALLATION CODE BY A PERSON FAMILIAR WITH THE CONSTRUCTION AND OPERATION OF THE PRODUCT AND THE HAZARDS INVOLVED. **WARNING: Make certain power is OFF before installing or maintaining fixture. No user serviceable parts inside. CAUTION: For proper weatherproof function all gaskets must be seated properly and all screws inserted and tightened firmly. Silicone all plugs and unused conduit entries.**

- DO NOT make or alter any open holes in the luminaire. Do not modify the luminaire.
- Risk of eye injury! Eye protection is required at all times during the installation, operation, and maintenance of the luminaire.
- The high intensity light produced by the luminaire can cause severe damage to the eye if viewed directly at close range. Avoid being in front of a luminaire that is on or wear suitable light blocking protective eye wear such as welding goggles. The luminaire should be positioned so that prolonged staring into the luminaire at a distance closer than 33 feet is not expected.
- NEVER point the aiming laser at any person or animal as it can cause permanent damage to eyes. Use laser only for aiming fixtures as directed.
- CAUTION - RISK OF FIRE.
- This product is not available for several special environments, such as places with corrosive gas liquids or high pressure water vapor.
- This luminaire is designed to operate in ambient temperatures ranging from -40°C to 50°C (-40°F to 122°F).

INSTRUCTIONS

GAMERGB INSTALLATION



RAB Lighting is committed to creating high-quality, affordable, well-designed and energy-efficient LED lighting and controls that make it easy for electricians to install and end users to save energy. We'd love to hear your comments. Please call the Marketing Department at 888-RAB-1000 or email: marketing@rablighting.com

MOUNTING & AIMING

1. The **YOKE MOUNT** dimensions can be used to mark the mounting hole locations on the beam (Fig. 1).
2. Right-Left Point-of-Aim can be assisted with the Protractor, included in the box.
3. Use 5/8" stainless steel bolts with locking hardware to secure the Fixture to the Beam (Fig. 2).

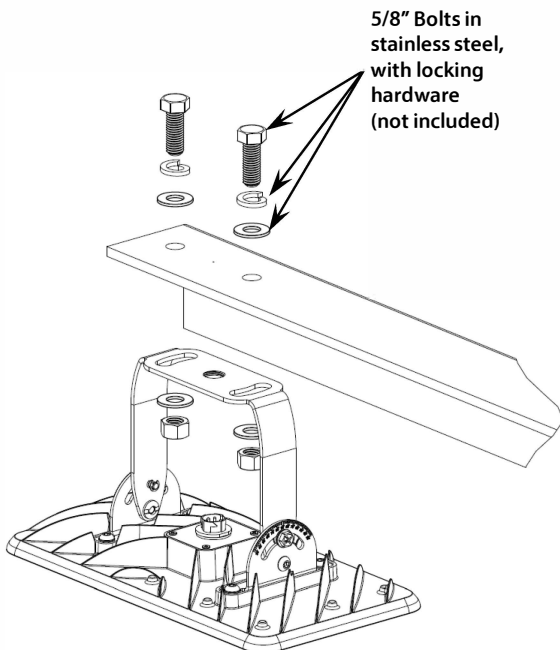
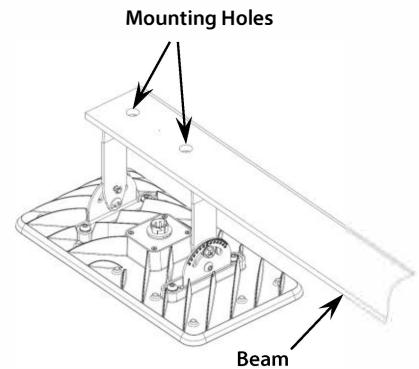
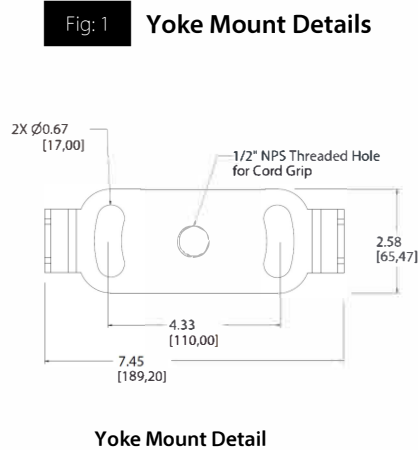
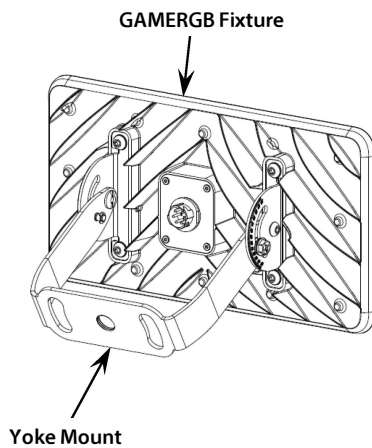
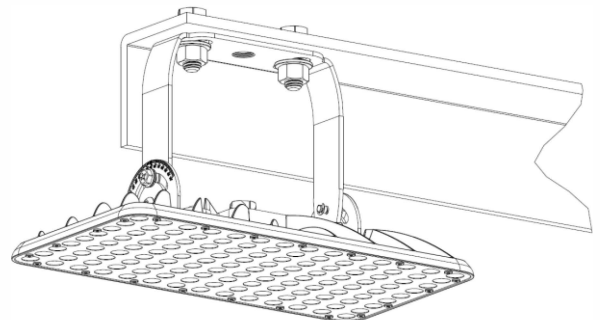


Fig: 2 Bolt Details



INSTRUCTIONS

GAMERGB INSTALLATION



RAB Lighting is committed to creating high-quality, affordable, well-designed and energy-efficient LED lighting and controls that make it easy for electricians to install and end users to save energy. We'd love to hear your comments. Please call the Marketing Department at 888-RAB-1000 or email: marketing@rablighting.com

MOUNTING & AIMING (cont.)

4. To adjust Up-Down Point-of-Aim, first loosen the **LOCKING SCREWS** on the **YOKE MOUNT** (Fig. 3) using a #2 Phillips Drive or 1/2" hex-socket. **LOCKING SCREWS MUST BE LOOSE PRIOR TO AIMING.**
5. Adjust the Up-Down Point-of-Aim by turning the **AIMING SCREW** with either a #2 Phillips Drive or a 1/2" hex socket.
6. Tighten the **LOCKING SCREWS** when finished aiming (Fig. 4)

Fig: 3

Locking Screw Locations LOOSEN BEFORE AIMING

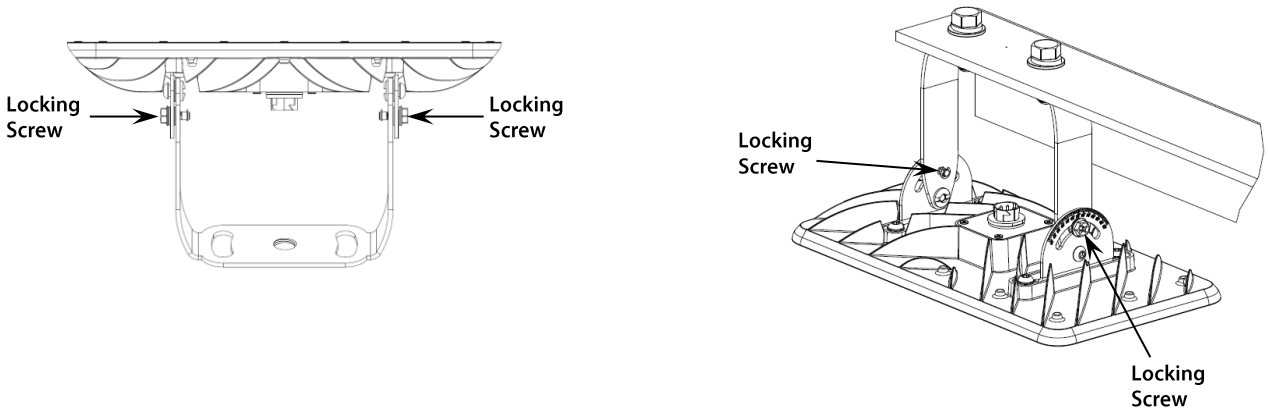
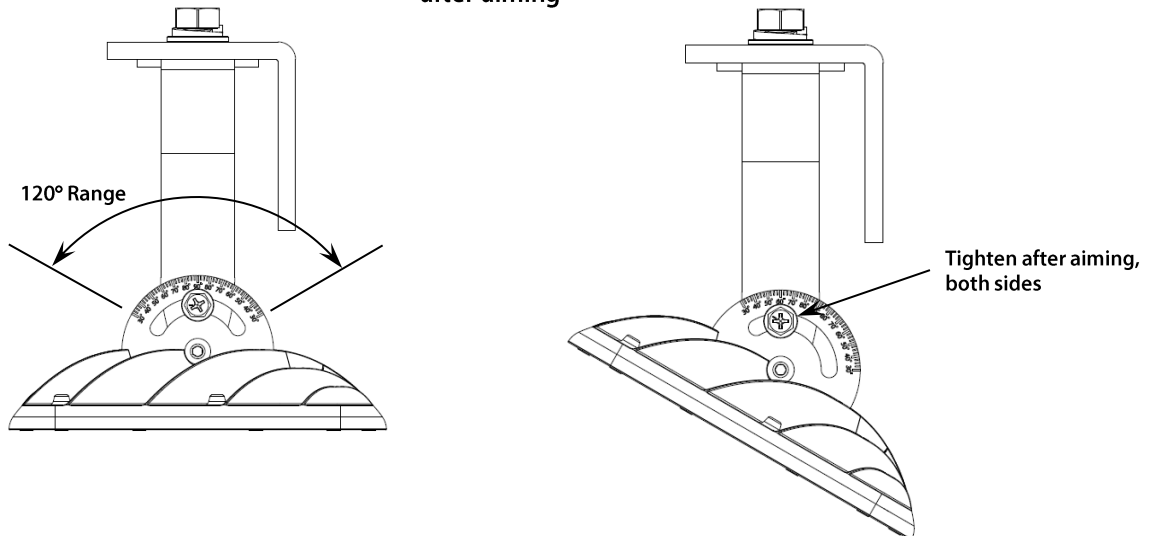


Fig: 4

Tighten Locking Screws after aiming



INSTRUCTIONS

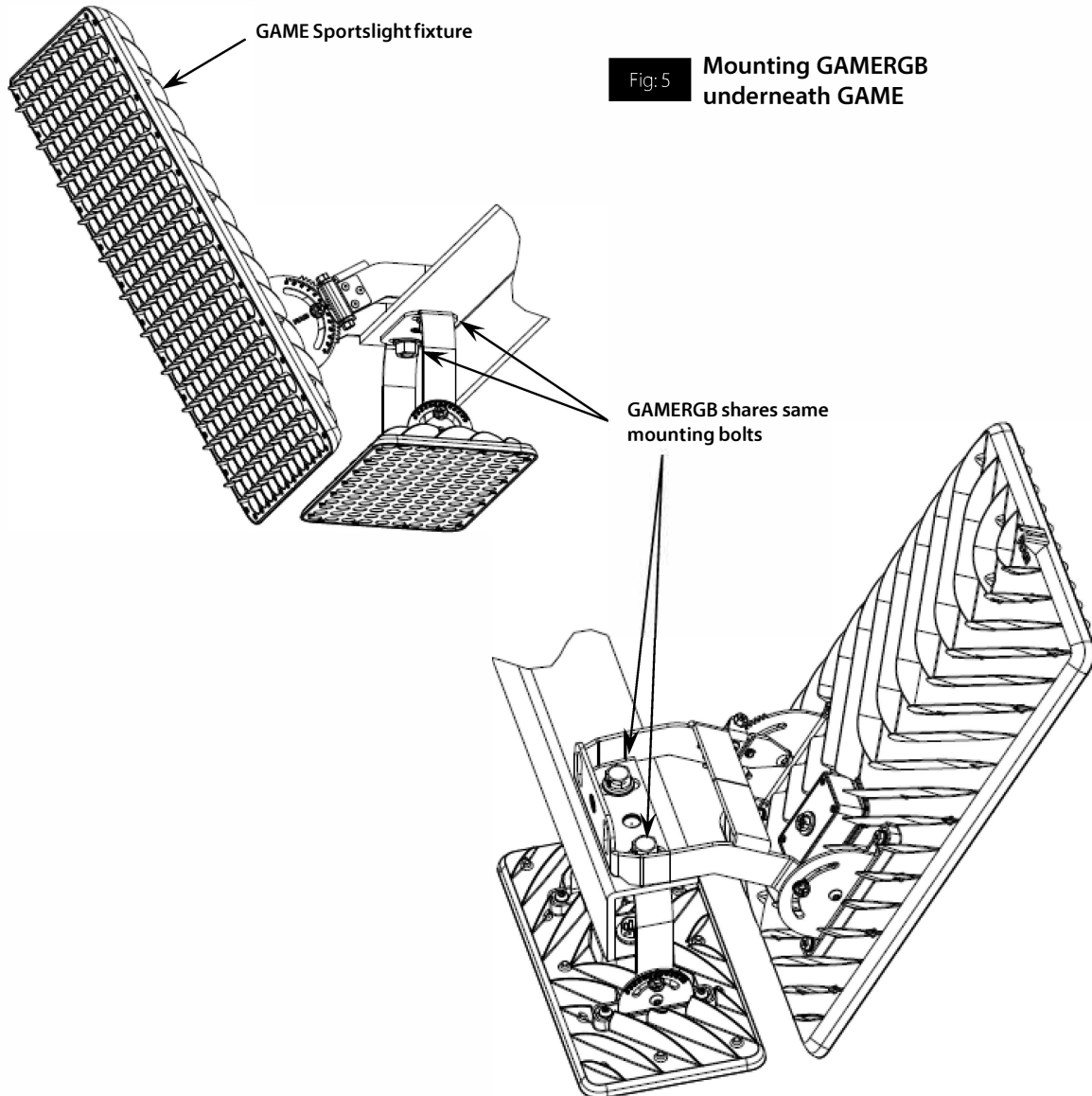
GAMERGB INSTALLATION



RAB Lighting is committed to creating high-quality, affordable, well-designed and energy-efficient LED lighting and controls that make it easy for electricians to install and end users to save energy. We'd love to hear your comments. Please call the Marketing Department at 888-RAB-1000 or email: marketing@rablighting.com

MOUNTING & AIMING (cont.)

7. GAMERGB is designed to mount to the same hole pattern as GAME, as shown below (Fig. 5).



INSTRUCTIONS

GAMERGB INSTALLATION



RAI Lighting is committed to creating high quality, affordable, well designed and energy efficient LED light fixtures and components that make it easy to create a great install and save energy. We'd love to hear your comments. Please call the Marketing Department at 888-RAI-1000 or email marketing@railighting.com

DRIVER BOX

The Fixture connects to the **Driver Box** using either a **10-ft Driver Cable** (Fig. 9) or a **100-ft Driver Cable**, (Fig. 10). The **Driver Cable** comes with a waterproof connector that pushes on to the Fixture at the rear (Fig. 11).

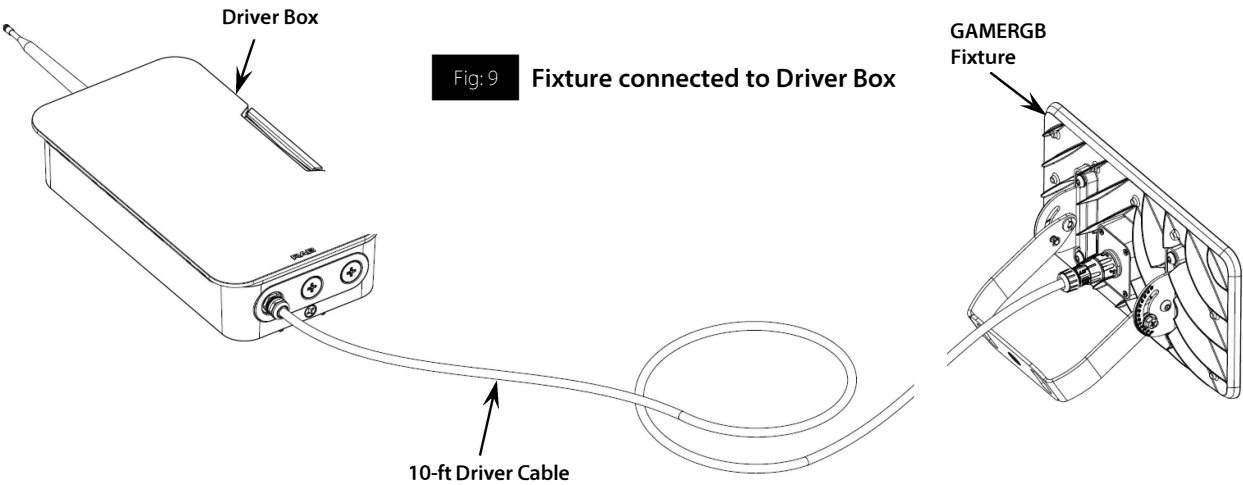


Fig: 10 100-ft Driver Cable (GAMERGB-CABLE-100)
(ordered separately)

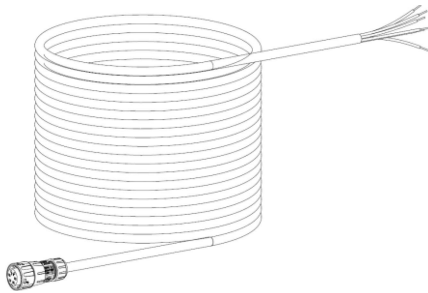
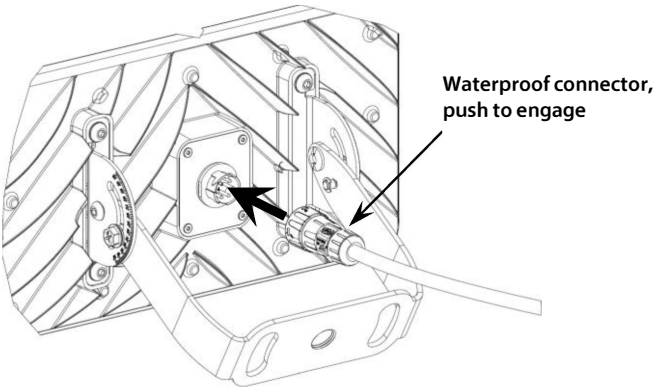


Fig: 11 Driver Cable Connection to Fixture



INSTRUCTIONS

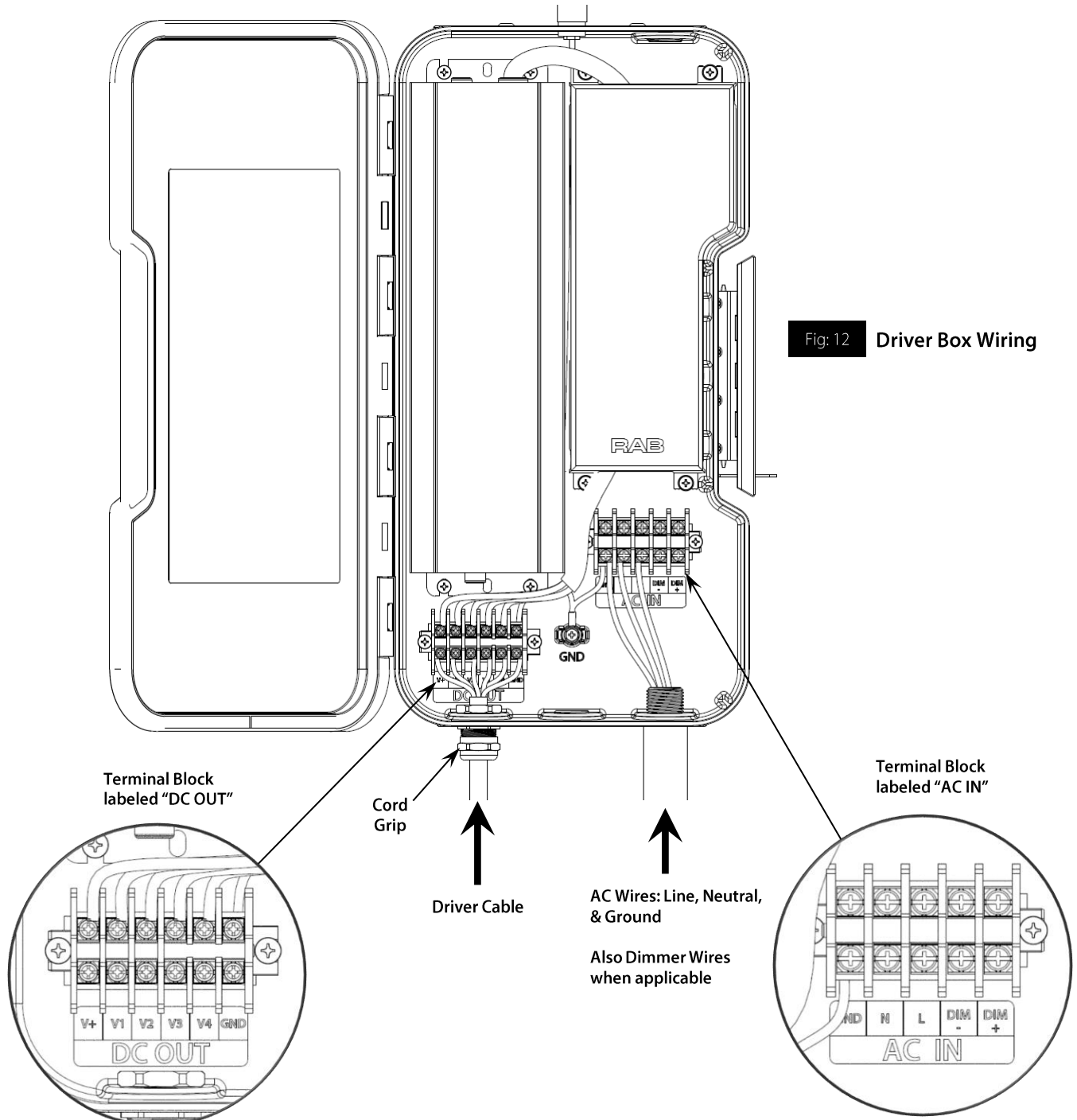
GAMERGB INSTALLATION

RAB

RAB Lighting is committed to creating high-quality, affordable, well-designed and energy-efficient LED lighting and controls that make it easy for electricians to install and end users to save energy. We'd love to hear your comments. Please call the Marketing Department at 888-RAB-1000 or email: marketing@rablighting.com

DRIVER BOX (cont.)

The **Driver Cable** must be wired to the Terminal Block labeled "DC OUT" inside the **Driver Box**. Match the Red, Blue, White, Yellow, and Black wires to the corresponding posts on the Terminal Block. Tighten the Cord Grip around the **Driver Cable** to ensure a weather-proof seal.



INSTRUCTIONS

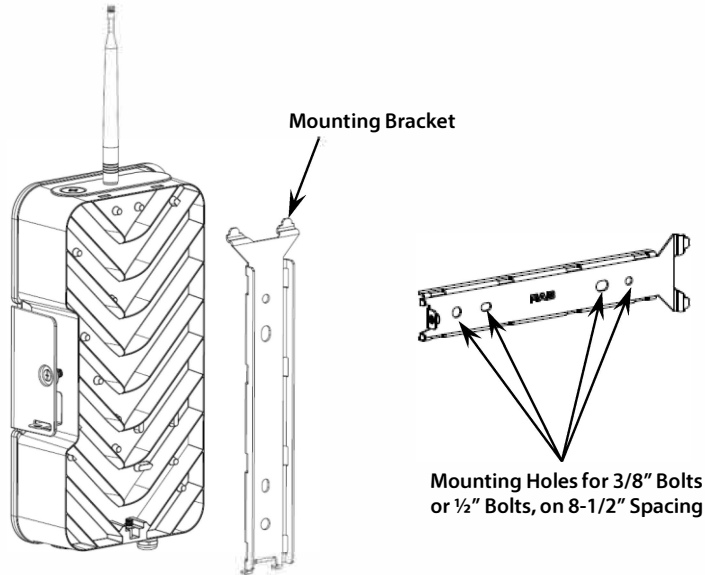
GAMERGB INSTALLATION



RAB Lighting is committed to creating high-quality, affordable, well-designed and energy-efficient LED lighting and controls that make it easy for electricians to install and end users to save energy. We'd love to hear your comments. Please call the Marketing Department at 888-RAB-1000 or email: marketing@rablighting.com

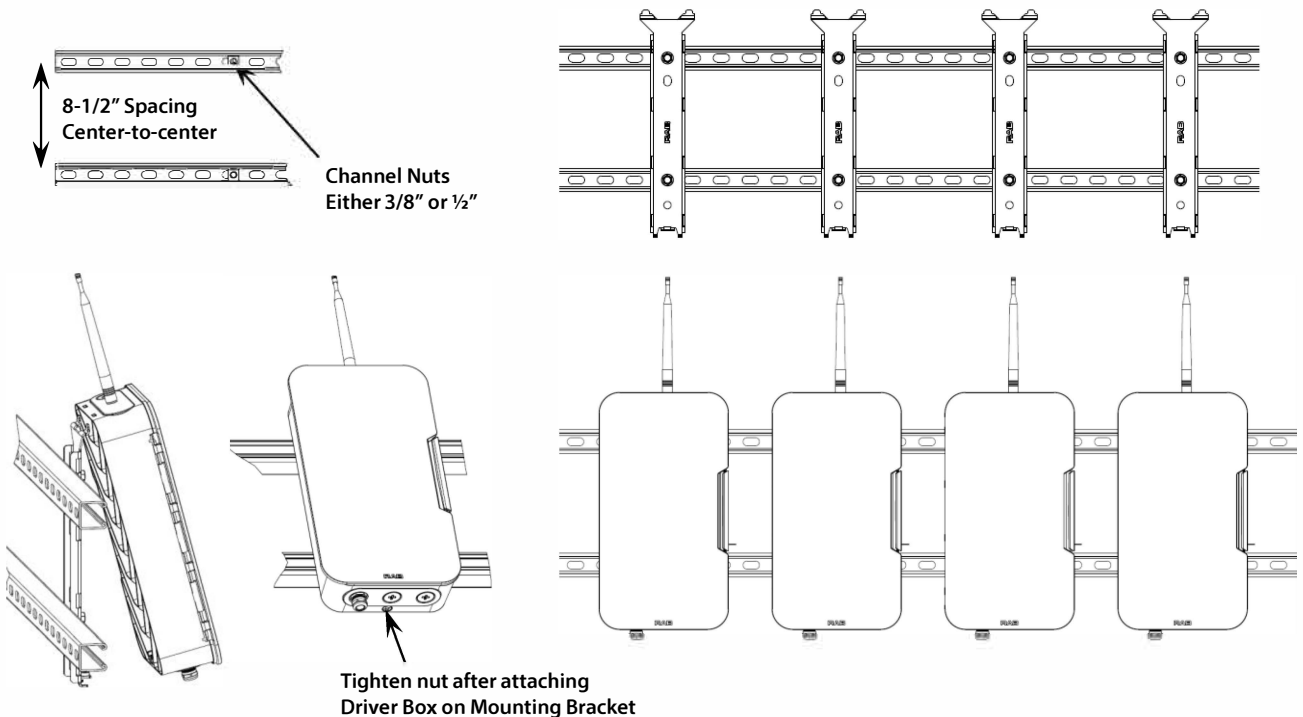
DRIVER BOX MOUNTING

The **Driver Box** comes with an integral **Mounting Bracket** that can be removed and strapped to a pole, bolted to a pole, or bolted to a strut channel.



STRUT

Fig: 13 Strut Mounting



INSTRUCTIONS

GAMERGB INSTALLATION

RAB

RAB Lighting is committed to creating high-quality, affordable, well-designed and energy-efficient LED lighting and controls that make it easy for electricians to install and end users to save energy. We'd love to hear your comments. Please call the Marketing Department at 888-RAB-1000 or email: marketing@rablighting.com

DRIVER BOX MOUNTING (cont.)

POLE

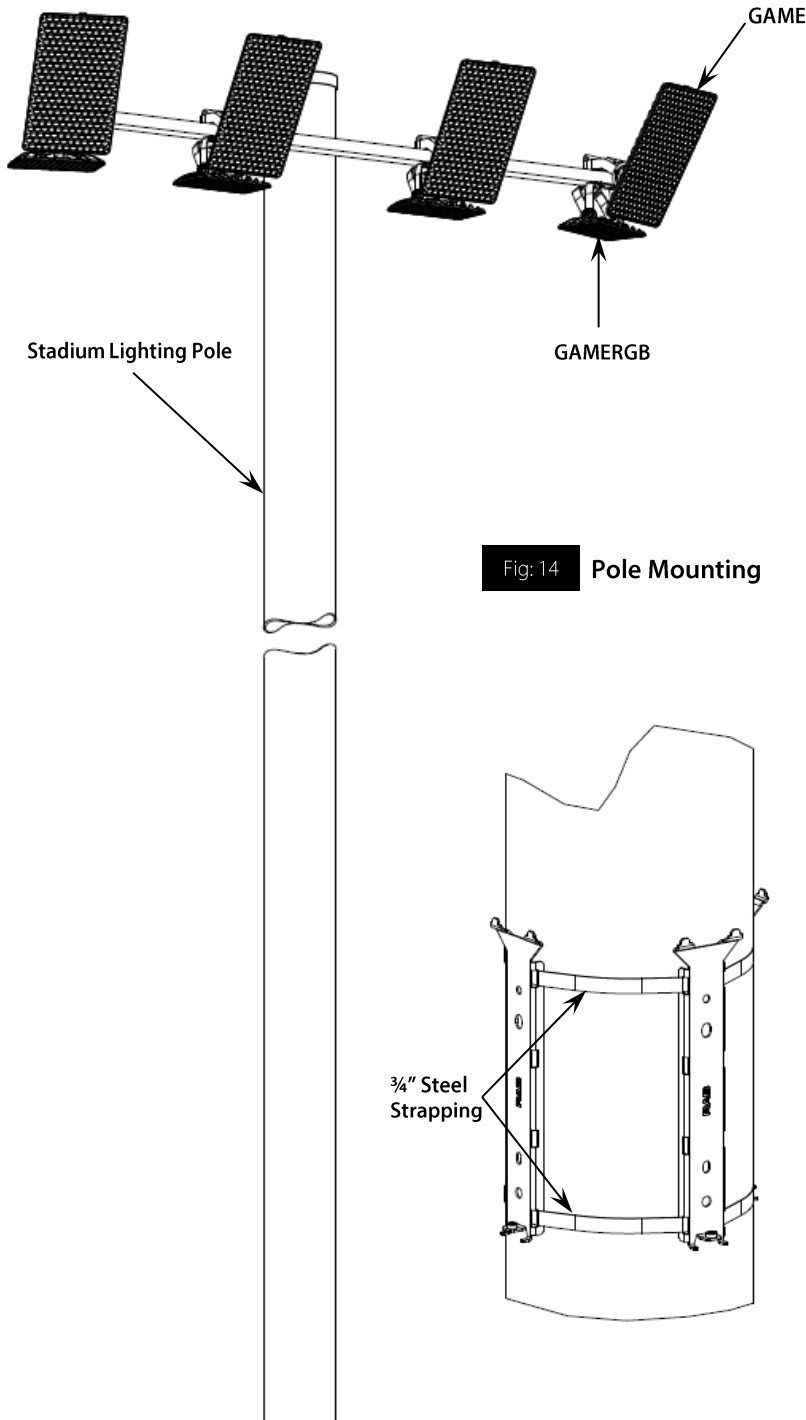
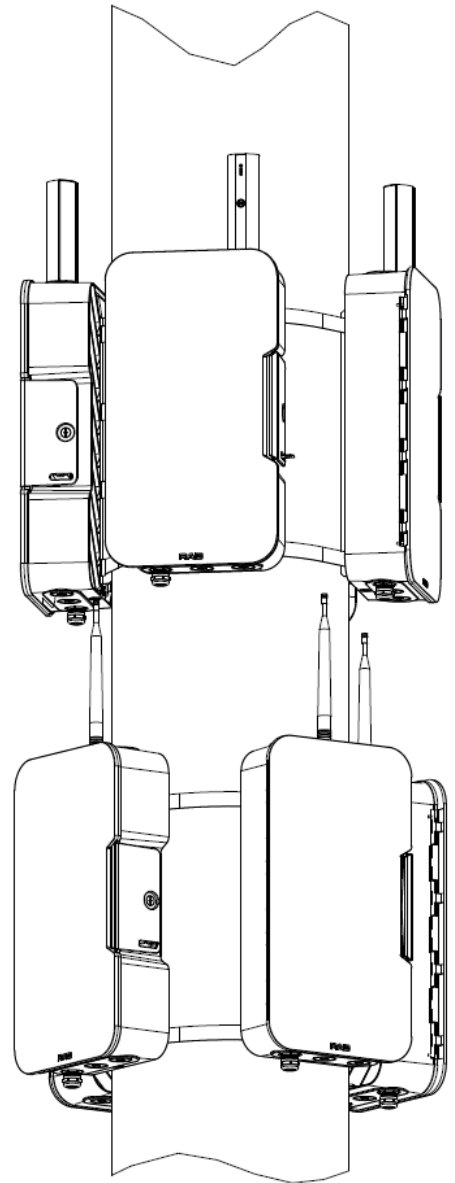


Fig: 14 Pole Mounting



INSTRUCTIONS

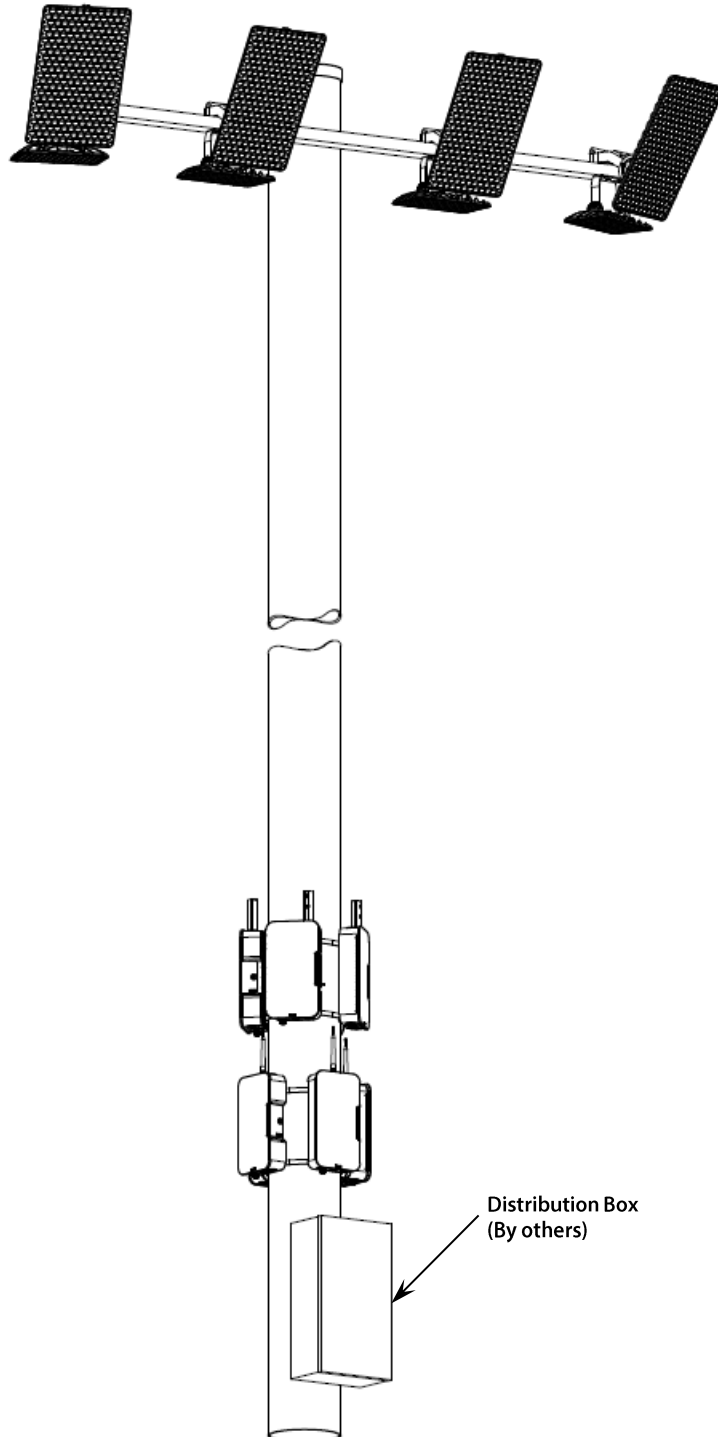
GAMERGB INSTALLATION

RAB

RAB Lighting is committed to creating high-quality, affordable, well-designed and energy-efficient LED lighting and controls that make it easy for electricians to install and end users to save energy. We'd love to hear your comments. Please call the Marketing Department at 888-RAB-1000 or email: marketing@rablighting.com

DRIVER BOX MOUNTING (cont.)

POLE



INSTRUCTIONS

GAMERGB INSTALLATION

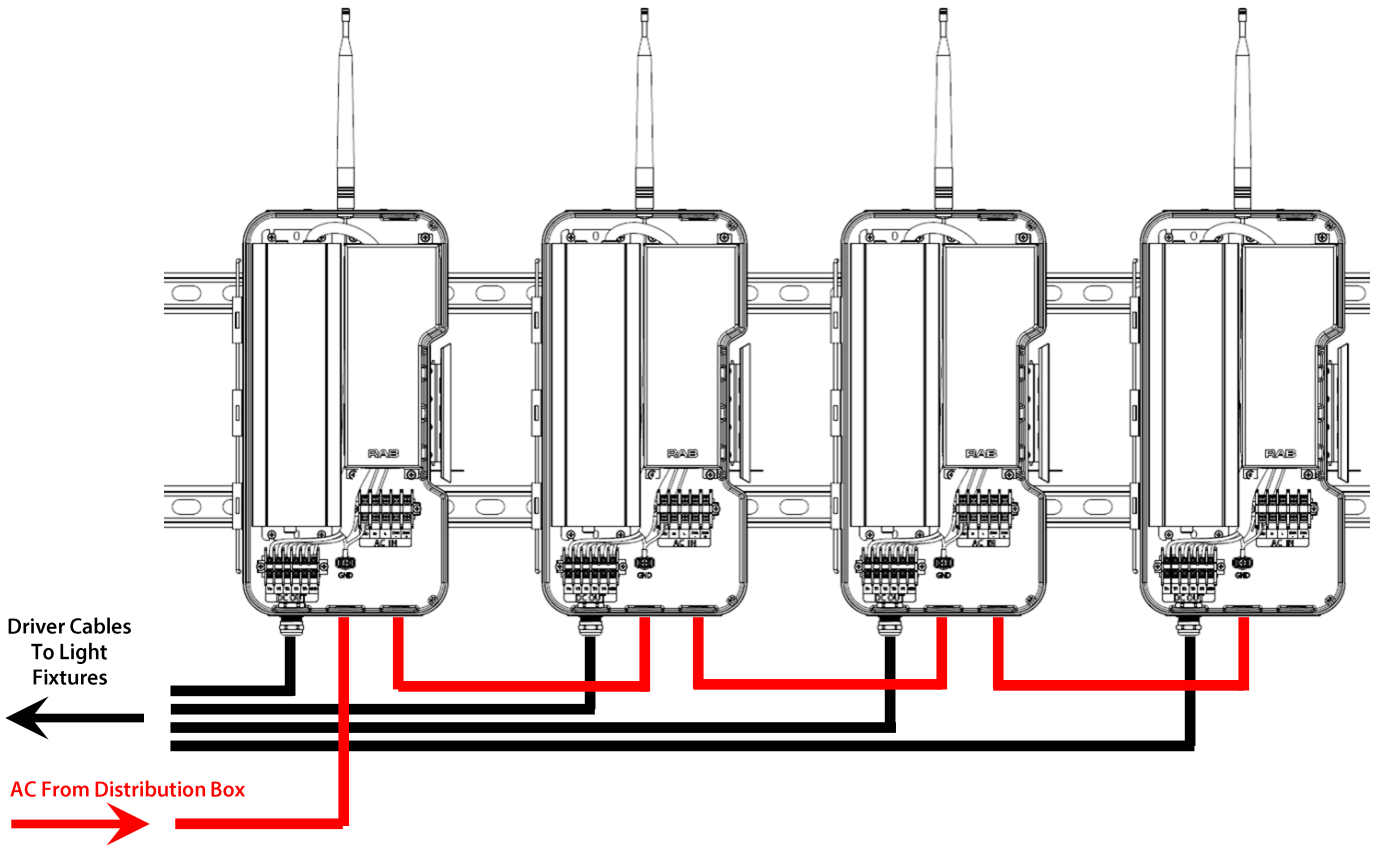
RAB

RAB Lighting is committed to creating high-quality, affordable, well-designed and energy-efficient LED lighting and controls that make it easy for electricians to install and end users to save energy. We'd love to hear your comments. Please call the Marketing Department at 888-RAB-1000 or email: marketing@rablighting.com

DRIVER BOX MOUNTING (cont.)

DAISY CHAINING DRIVER BOXES

The **Driver Boxes** can be daisy-chained together where AC Power comes in. Installer must verify adequate breaker capacity.



ACCESSORIES *(Sold Separately)*

- GAME – LSR
- GAME – SG
- GAME – SBMA
- Aiming Laser
- Slipfitter Adaptor
- Square Beam Adaptor

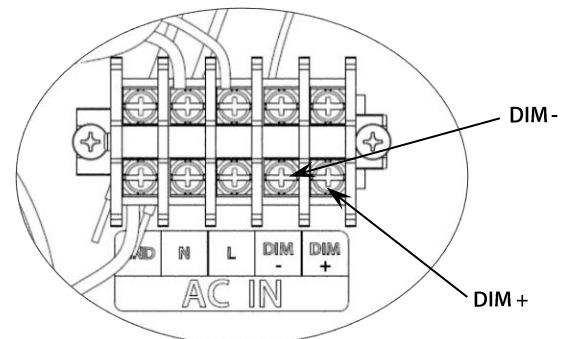
0-10V DIMMABLE WIRING

For 0-10V dimming, connect the DIM+ and DIM- wires to the **Driver Box** Terminal Block labeled "AC IN" at the corresponding posts.

CLEANING AND MAINTENANCE

CAUTION: Allow fixture to cool enough to touch prior to cleaning. Do not clean or maintain while fixture is energized.

1. Clean lens with non-abrasive cleaning solution
2. Do not open fixture to clean the LEDs. Do not touch the LEDs.



INSTRUCTIONS

GAMERGB INSTALLATION



RAB Lighting is committed to creating high-quality, affordable, well-designed and energy-efficient LED lighting and controls that make it easy for electricians to install and end users to save energy. We'd love to hear your comments. Please call the Marketing Department at 888-RAB-1000 or email: marketing@rablighting.com

TROUBLESHOOTING

1. Ensure that the waterproof connector at the back of the Light Fixture is pushed in all the way and the collar locked in place.
2. Verify that the wire colors coming off the "DC OUT" terminal block match – blue-to-blue, red-to-red, & black-to-black, etc.

Note: These instructions do not cover all details or variations in equipment nor do they provide for every possible situation during installation, operation or maintenance.

Easy Answers

rablighting.com
Visit our website for product info

Tech Help Line
Call our experts: 888 722-1000

e-mail
Answered promptly - sales@rablighting.com

Free Lighting Layouts
Answered online or by request

RAB WARRANTY: RAB's warranty is subject to all terms and conditions found at rablighting.com/warranty.