

INSTRUCTIONS

GAME INSTALLATION

RAB

RAB Lighting is committed to creating high-quality, affordable, well-designed and energy-efficient LED lighting and controls that make it easy for electricians to install and end users to save energy. We'd love to hear your comments. Please call the Marketing Department at 888-RAB-1000 or email: marketing@rablighting.com



IMPORTANT

READ CAREFULLY BEFORE INSTALLING FIXTURE. RETAIN THESE INSTRUCTIONS FOR FUTURE REFERENCE. RAB fixtures must be wired in accordance with the National Electrical Code and all applicable local codes. Proper grounding is required for safety. THIS PRODUCT MUST BE INSTALLED IN ACCORDANCE WITH THE APPLICABLE INSTALLATION CODE BY A PERSON FAMILIAR WITH THE CONSTRUCTION AND OPERATION OF THE PRODUCT AND THE HAZARDS INVOLVED. **WARNING:** Make certain power is OFF before installing or maintaining fixture. No user serviceable parts inside. **CAUTION:** For proper weatherproof function all gaskets must be seated properly and all screws inserted and tightened firmly. Silicone all plugs and unused conduit entries.

- Do not modify the luminaire.
- Risk of eye injury! Eye protection is required at all times during the installation, operation, and maintenance of the luminaire.
- The high intensity light produced by the luminaire can cause severe damage to the eye if viewed directly at close range. Avoid being in front of a luminaire that is on or wear suitable light blocking protective eye wear such as welding goggles. The luminaire should be positioned so that prolonged staring into the luminaire at a distance closer than 33 feet is not expected.
- NEVER point the aiming laser at any person or animal as it can cause permanent damage to eyes. Use laser only for aiming fixtures as directed.
- CAUTION - RISK OF FIRE.
- This product is not available for several special environments, such as places with corrosive gas liquids or high pressure water vapor.
- This luminaire is designed to operate in ambient temperatures ranging from -40°C to 40°C (-40°F to 104°F).

CAUTION WHEN USING THE AIMING LASER, NEVER LOOK DIRECTLY INTO THE LASER BEAM
(sold separately).

INSTRUCTIONS

GAME INSTALLATION



RAB Lighting is committed to creating high-quality, affordable, well-designed and energy-efficient LED lighting and controls that make it easy for electricians to install and end users to save energy. We'd love to hear your comments. Please call the Marketing Department at 888-RAB-1000 or email: marketing@rablighting.com

MOUNTING & AIMING

1. The **YOKE MOUNT** on the Fixture can be removed and used as a template for marking the mounting holes (*Fig. 1*)
2. **Right-Left Point-of-Aim** can be assisted with the **Protractor**, included in the box
3. Use 5/8" stainless steel **Bolts** with locking hardware to secure the Fixture to the **Beam** (*Fig. 2*).

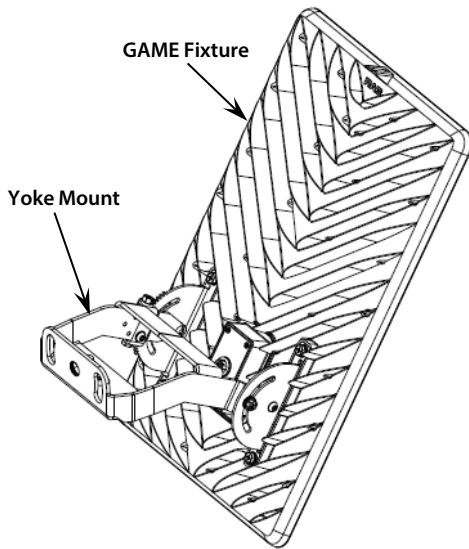


Fig: 1 Yoke Mount Details

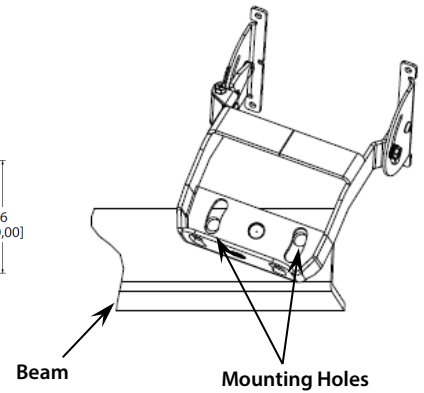
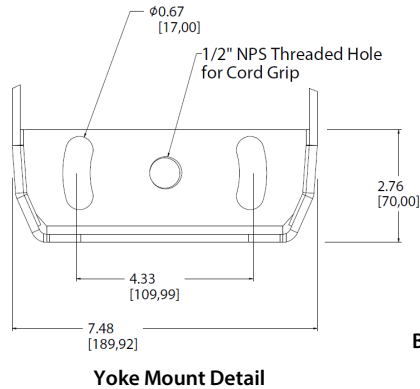
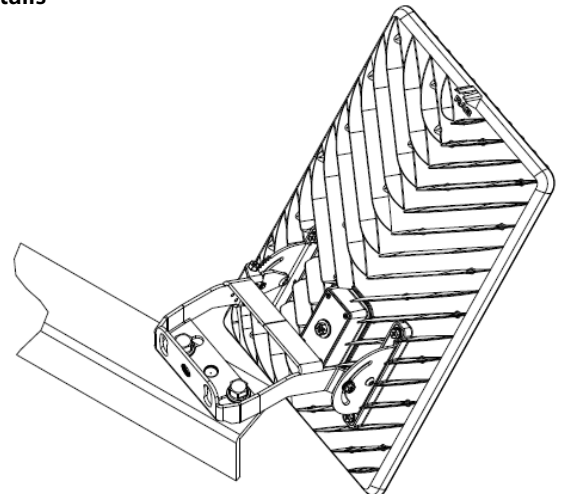
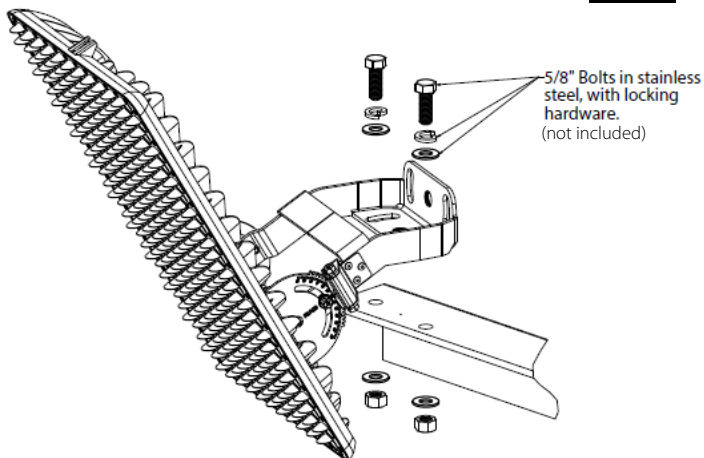


Fig: 2 Bolt Details



INSTRUCTIONS

GAME INSTALLATION

RAB

RAB Lighting is committed to creating high-quality, affordable, well-designed and energy-efficient LED lighting and controls that make it easy for electricians to install and end users to save energy. We'd love to hear your comments. Please call the Marketing Department at 888-RAB-1000 or email: marketing@rablighting.com

MOUNTING & AIMING (cont.)

3. To adjust Up-Down Point-of-Aim, first loosen the **LOCKING SCREWS** on the **YOKE MOUNT** (Fig. 3) using a #2 Phillips Drive or 1/2" hex-socket. **LOCKING SCREWS MUST BE LOOSE PRIOR TO AIMING.**
4. Secure the **AIMING LASER** (sold separately, GAME - LSR) by inserting the Laser into its Holder, and inserting the Holder into the clip at the top edge of the fixture (Fig. 4)
5. Adjust the Up-Down Point-of-Aim by turning the **AIMING SCREW** with either a #2 Phillips Drive or a 1/2" hex socket. Use **SLOW-SPEED, LOW-TORQUE** settings if using a power drill.

Fig: 3

Locking Screw Locations LOOSEN BEFORE AIMING

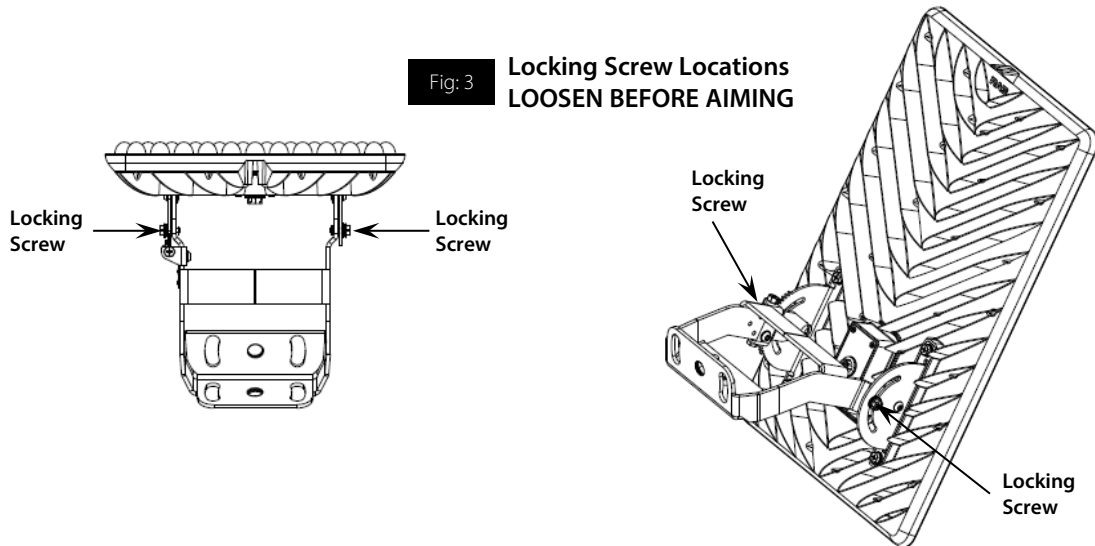
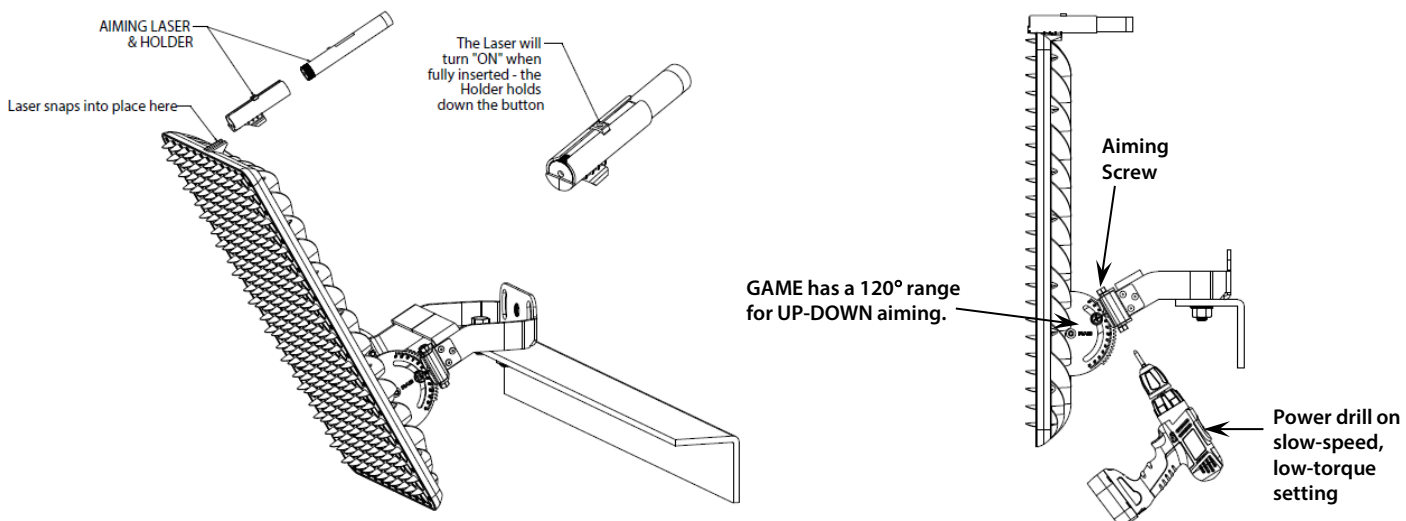


Fig: 4

Laser Attachment & Aiming



INSTRUCTIONS

GAME INSTALLATION

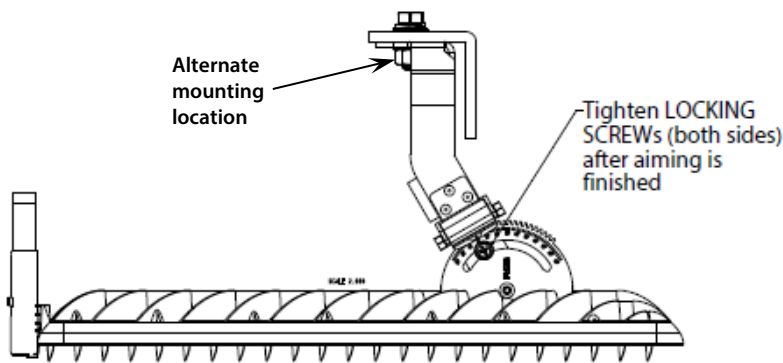
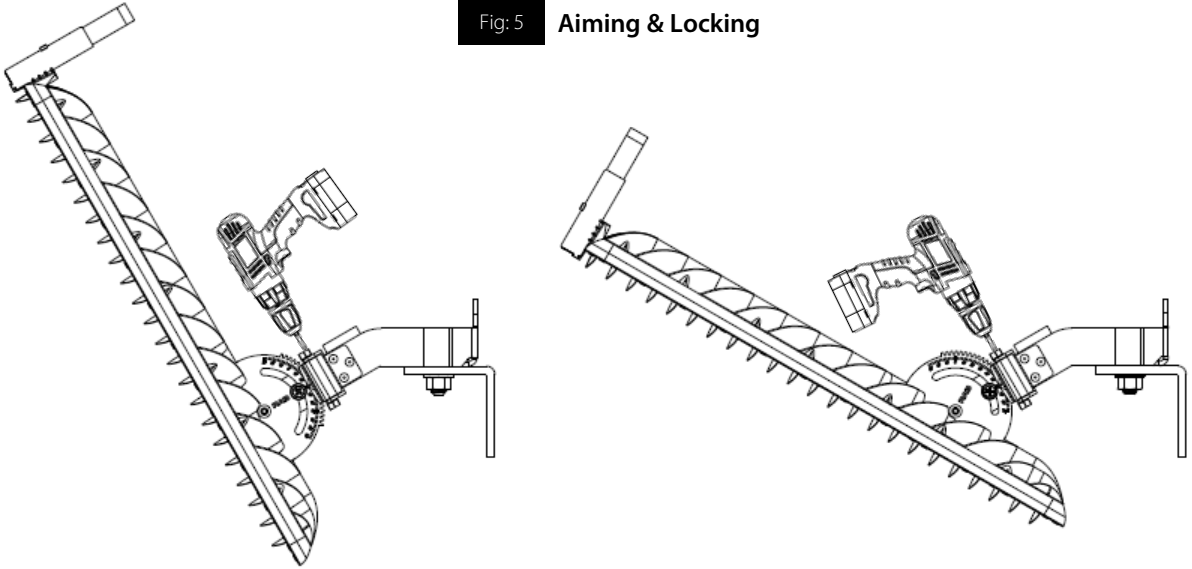
RAB

RAB Lighting is committed to creating high-quality, affordable, well-designed and energy-efficient LED lighting and controls that make it easy for electricians to install and end users to save energy. We'd love to hear your comments. Please call the Marketing Department at 888-RAB-1000 or email: marketing@rablighting.com

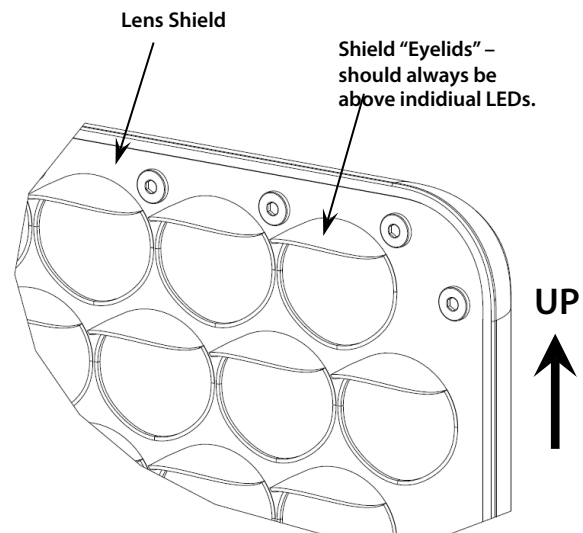
MOUNTING & AIMING (cont.)

6. Tighten the **LOCKING SCREWS** when finished aiming (Fig. 5).
7. Fixture Shield "eyelids" should be oriented as shown (Fig. 6), on top or above the LEDs.

Fig: 5 Aiming & Locking



Fixture orientation Fig: 6



INSTRUCTIONS

GAME INSTALLATION

RAB

RAB Lighting is committed to creating high-quality, affordable, well-designed and energy-efficient LED lighting and controls that make it easy for electricians to install and end users to save energy. We'd love to hear your comments. Please call the Marketing Department at 888-RAB-1000 or email: marketing@rablighting.com

SLIPFITTER ADAPTOR

Slipfitter Adaptor is sold separately (*GAME - SG*)

1. The Slipfitter Adaptor can be bolted to the **YOKE MOUNT**, fits a 2-3/8" tenon (mounting hardware provided) (Fig. 7).
2. Once mounted, follow the aiming procedures from the previous section.
3. A **Cord Grip** is provided if Power Cable needs to be routed into the pole Fig. 8).

Fig: 7 Slipfitter Adaptor Mounting

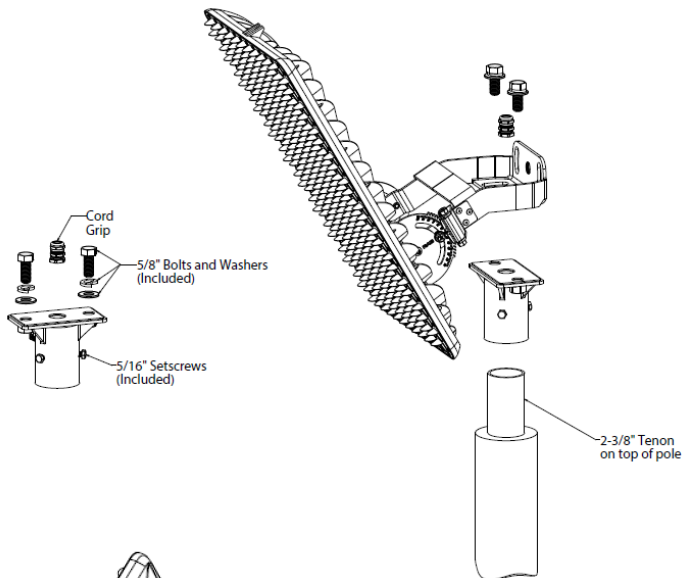
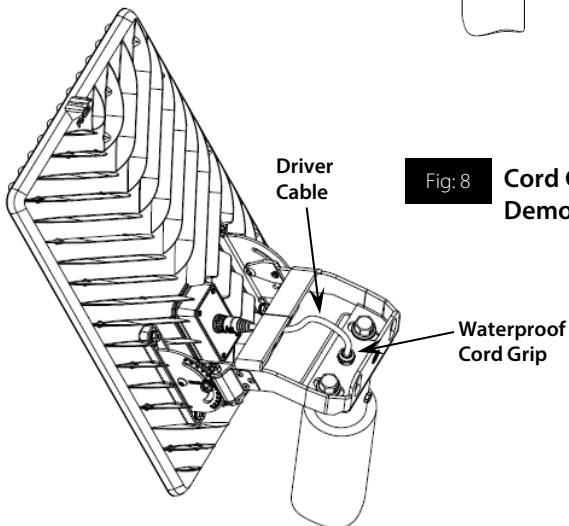


Fig: 8 Cord Grip Demonstration

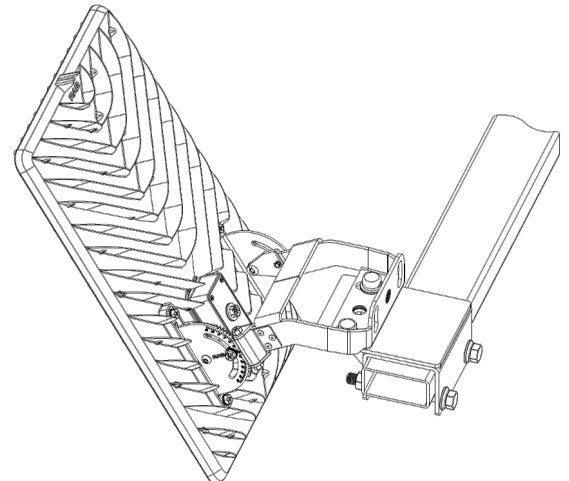
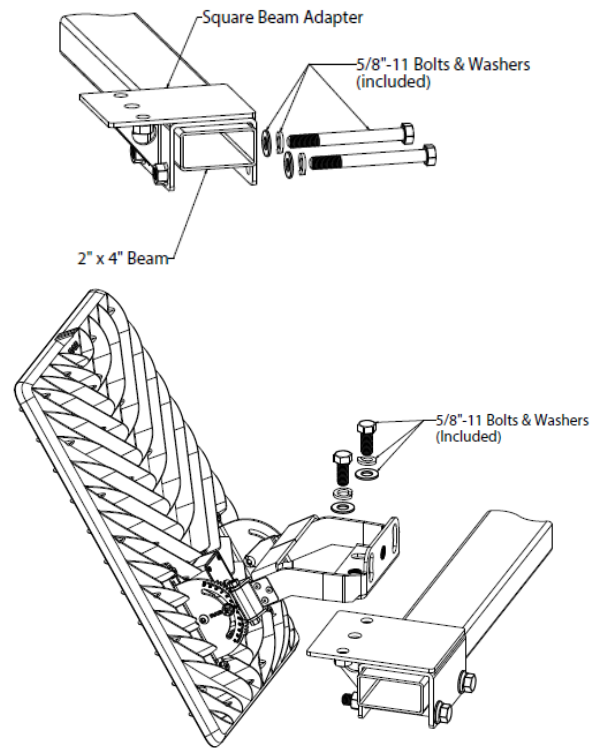


SQUARE BEAM ADAPTOR

Square Beam Adaptor is sold separately (*GAME - SBMA*)

1. The Square Beam Adaptor mounts to a 2" x 4" beam (Fig. 9).
2. 5/8" stainless steel hardware is provided.

Fig: 9 Square Beam Adaptor Bracket



INSTRUCTIONS

GAME INSTALLATION



RAB Lighting is committed to creating high-quality, affordable, well-designed and energy-efficient LED lighting and controls that make it easy for electricians to install and end users to save energy. We'd love to hear your comments. Please call the Marketing Department at 888-RAB-1000 or email: marketing@rablighting.com

DRIVER BOX

The Fixture connects to the **Driver Box** using either a **10-ft Driver Cable** (Fig. 10) or an optional **100-ft Driver Cable**, sold separately (Fig. 11) The **Driver Cable** comes with a waterproof connector that pushes onto the Fixture back (Fig. 12)

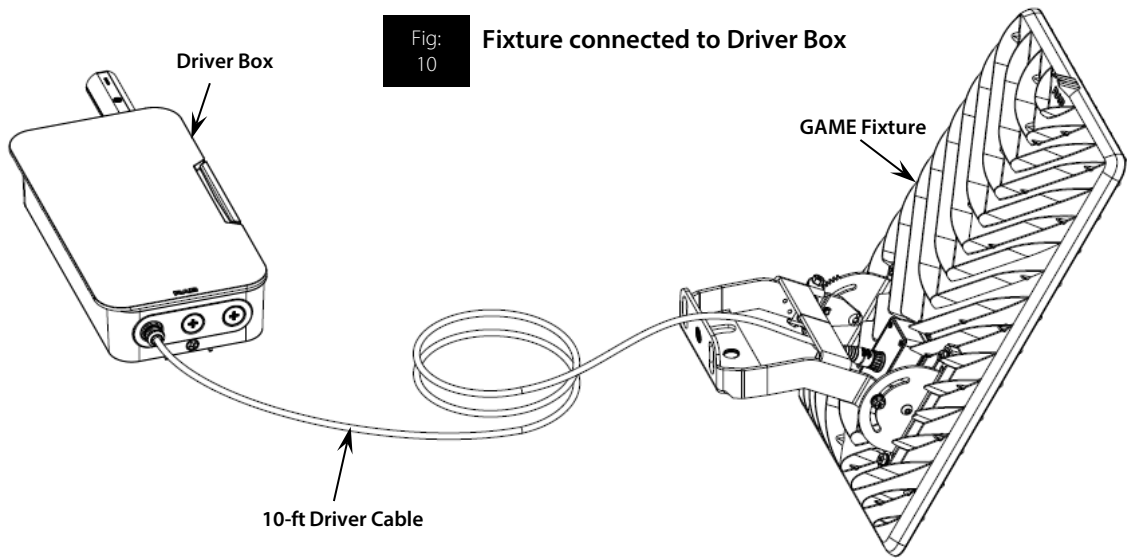


Fig: 11 100-ft Driver Cable

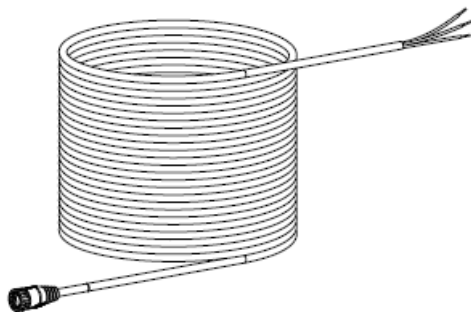
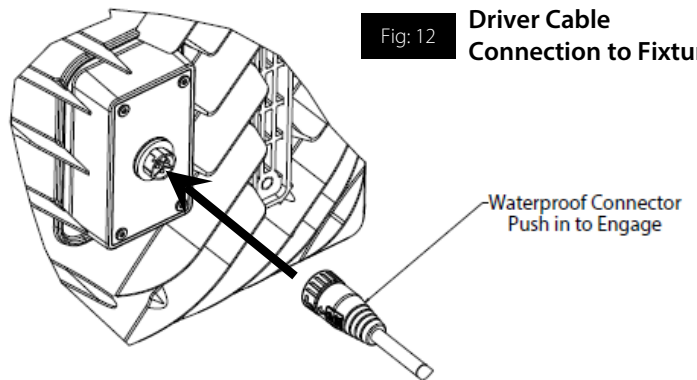


Fig: 12 Driver Cable Connection to Fixture



INSTRUCTIONS

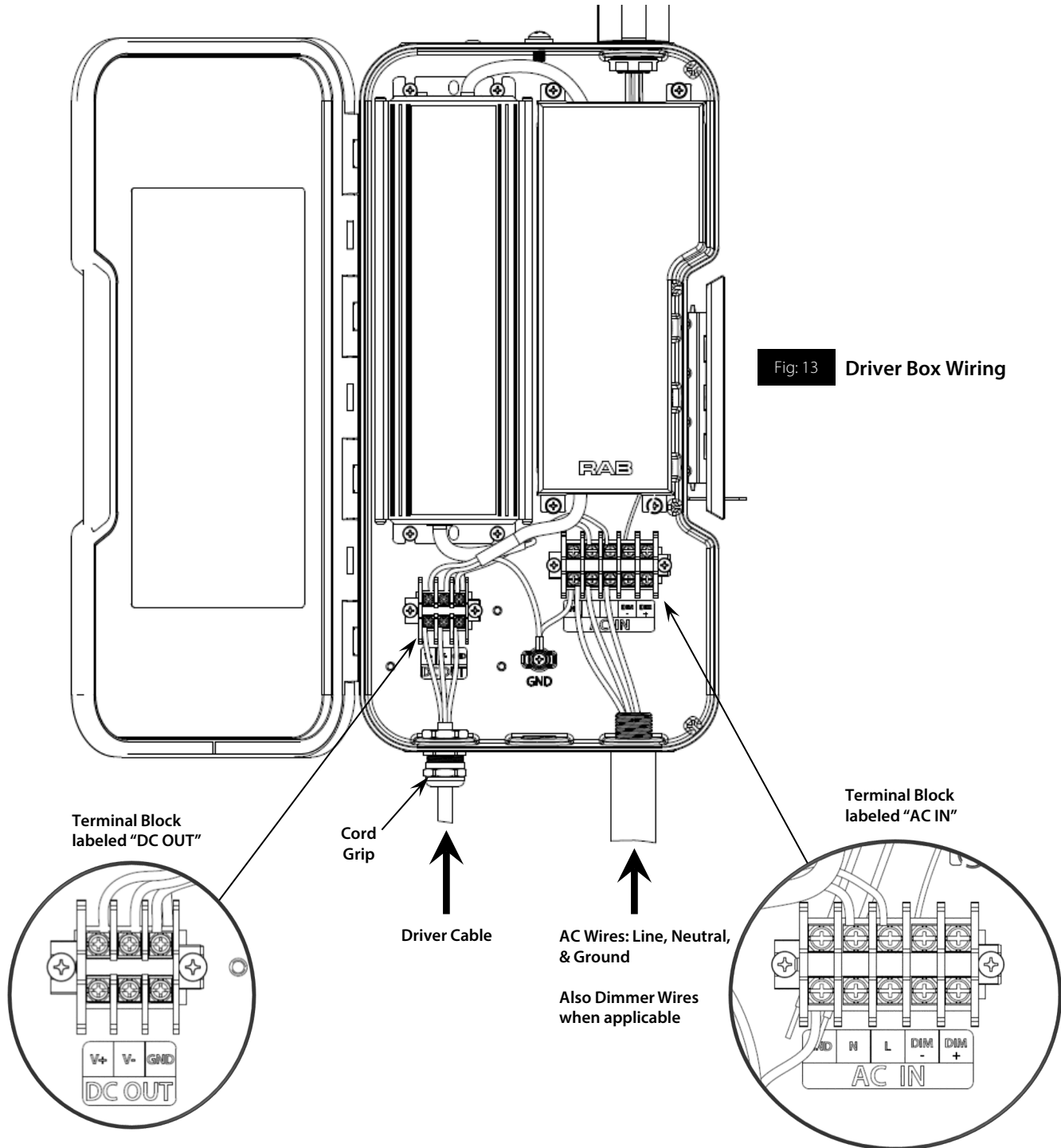
GAME INSTALLATION

RAB

RAB Lighting is committed to creating high-quality, affordable, well-designed and energy-efficient LED lighting and controls that make it easy for electricians to install and end users to save energy. We'd love to hear your comments. Please call the Marketing Department at 888-RAB-1000 or email: marketing@rablighting.com

DRIVER BOX (cont.)

The **Driver Cable** must be wired to the Terminal Block labeled "DC OUT" inside the **Driver Box**. Match the Red, Blue, and Black wires to the corresponding positions on the Terminal Block. Tighten the Cord Grip around the **Driver Cable** to ensure a weather-proof seal.



INSTRUCTIONS

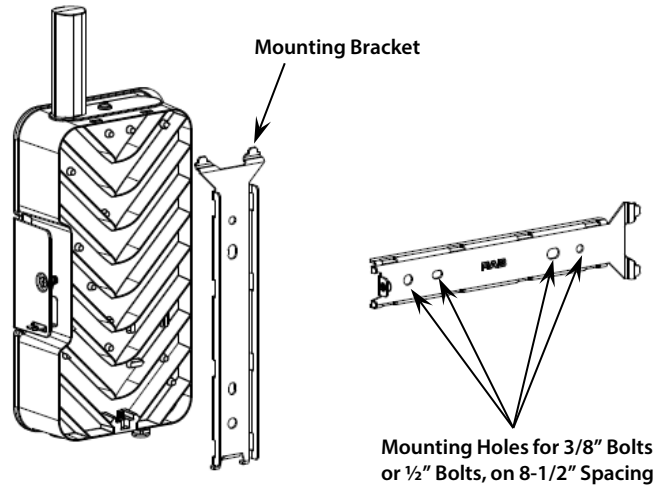
GAME INSTALLATION

RAB

RAB Lighting is committed to creating high-quality, affordable, well-designed and energy-efficient LED lighting and controls that make it easy for electricians to install and end users to save energy. We'd love to hear your comments. Please call the Marketing Department at 888-RAB-1000 or email: marketing@rablighting.com

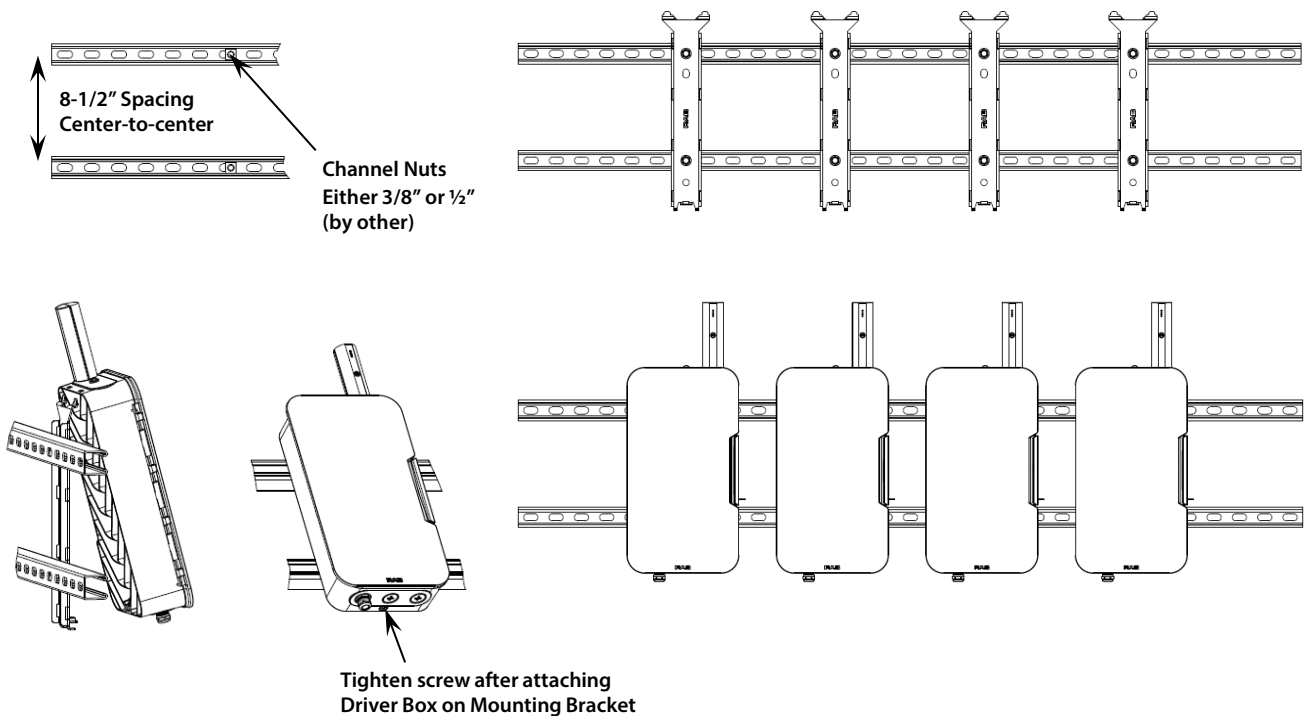
DRIVER BOX MOUNTING

The **Driver Box** comes with an integral **Mounting Bracket** that can be strapped to a pole, bolted to a pole, or bolted to a strut channel.



STRUT

Fig: 14 Strut Mounting



INSTRUCTIONS

GAME INSTALLATION

RAB

RAB Lighting is committed to creating high-quality, affordable, well-designed and energy-efficient LED lighting and controls that make it easy for electricians to install and end users to save energy. We'd love to hear your comments. Please call the Marketing Department at 888-RAB-1000 or email: marketing@rablighting.com

DRIVER BOX MOUNTING (cont.)

POLE

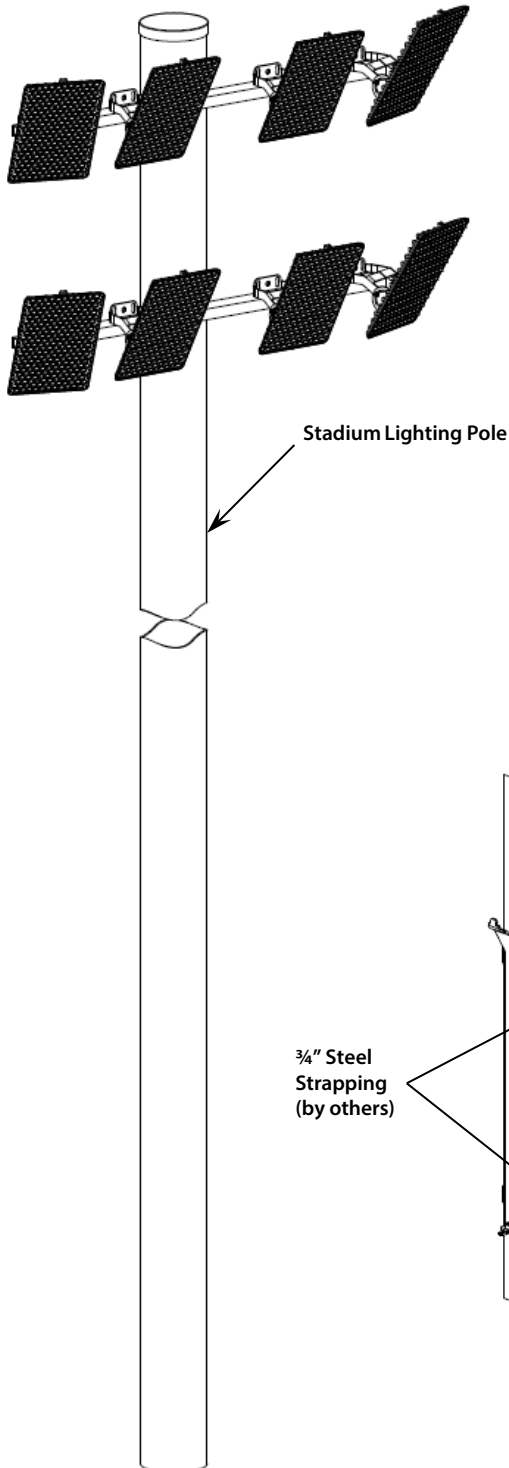
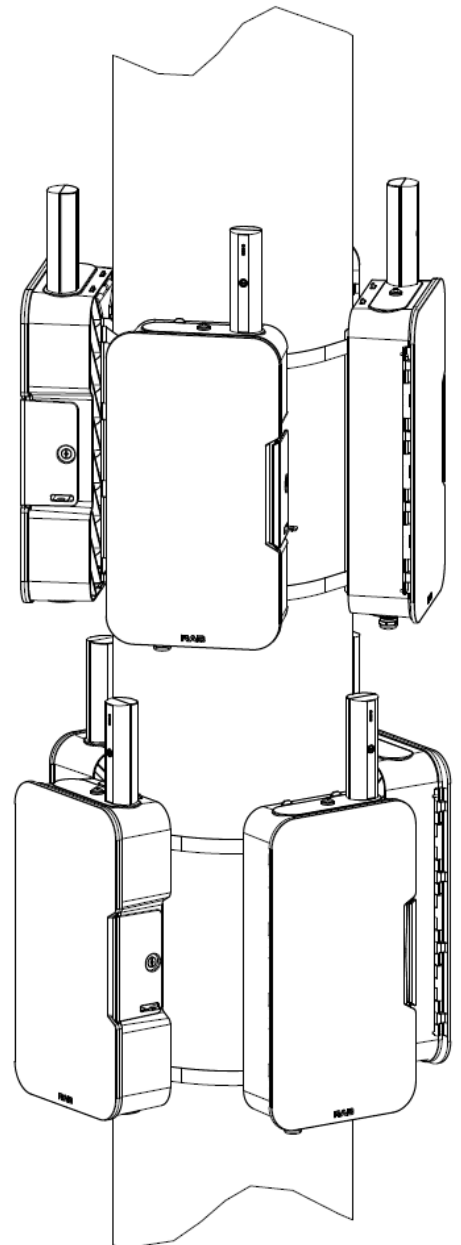


Fig: 15 Pole Mounting



INSTRUCTIONS

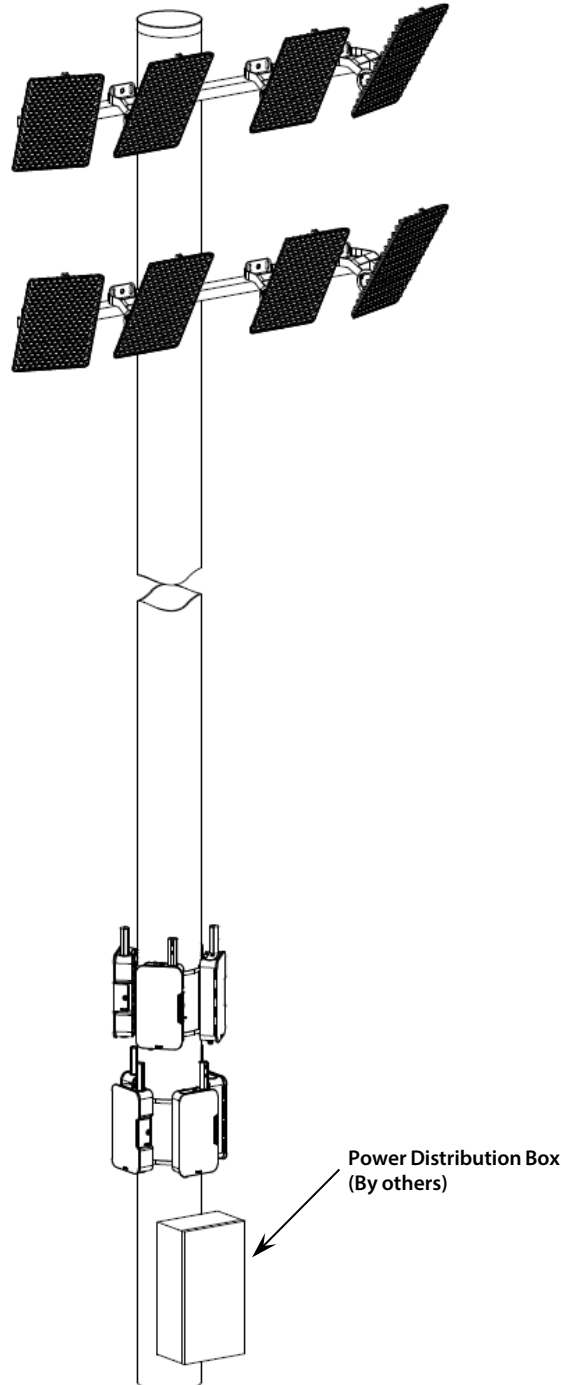
GAME INSTALLATION

RAB

RAB Lighting is committed to creating high-quality, affordable, well-designed and energy-efficient LED lighting and controls that make it easy for electricians to install and end users to save energy. We'd love to hear your comments. Please call the Marketing Department at 888-RAB-1000 or email: marketing@rablighting.com

DRIVER BOX MOUNTING (cont.)

POLE



INSTRUCTIONS

GAME INSTALLATION

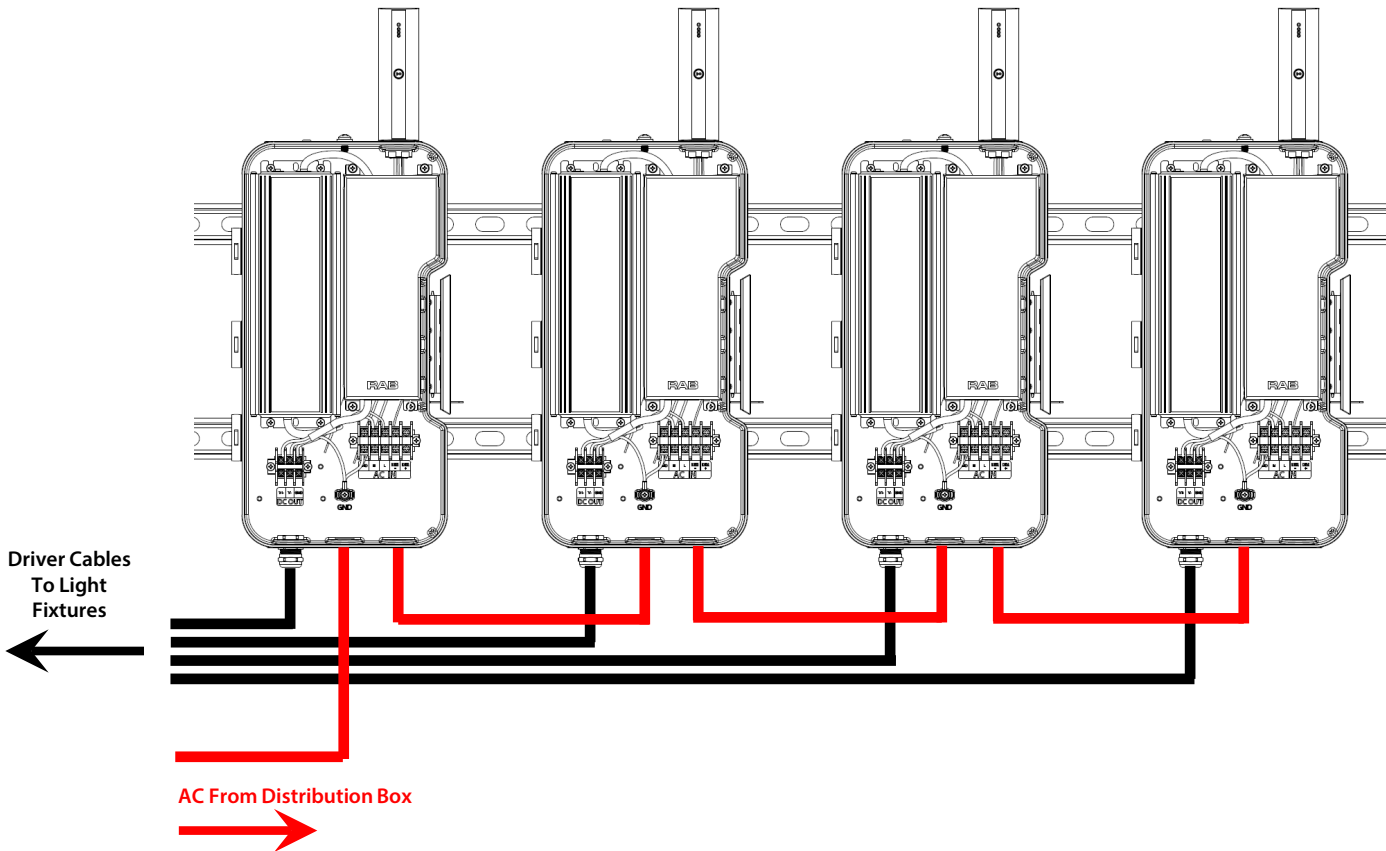
RAB

RAB Lighting is committed to creating high-quality, affordable, well-designed and energy-efficient LED lighting and controls that make it easy for electricians to install and end users to save energy. We'd love to hear your comments. Please call the Marketing Department at 888-RAB-1000 or email: marketing@rablighting.com

DRIVER BOX MOUNTING (cont.)

DAISY CHAINING DRIVER BOXES

The **Driver Boxes** can be daisy-chained together where AC Power comes in. Installer must verify adequate breaker capacity.



ACCESSORIES (Sold Separately)

- GAME – LSR
- GAME – SG
- GAME – SBMA
- GAME – CABLE 100
- Aiming Laser
- Slipfitter Adaptor
- Square Beam Adaptor
- 100ft 3 Wire Cable

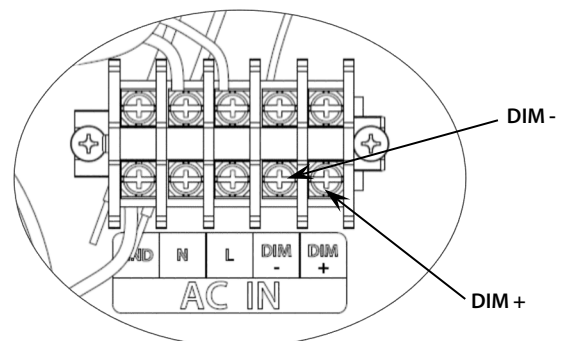
CLEANING AND MAINTENANCE

CAUTION: Allow fixture to cool enough to touch prior to cleaning. Do not clean or maintain while fixture is energized.

1. Clean lens with non-abrasive cleaning solution
2. Do not open fixture to clean the LEDs. Do not touch the LEDs.

0-10V DIMMABLE WIRING

For 0-10V dimming, connect the DIM+ and DIM- wires to the **Driver Box** Terminal Block labeled "AC IN" at the corresponding posts.



INSTRUCTIONS

GAME INSTALLATION



RAB Lighting is committed to creating high-quality, affordable, well-designed and energy-efficient LED lighting and controls that make it easy for electricians to install and end users to save energy. We'd love to hear your comments. Please call the Marketing Department at 888-RAB-1000 or email: marketing@rablighting.com

TROUBLESHOOTING

1. Ensure that the waterproof connector at the back of the Light Fixture is pushed in all the way and the collar locked in place
2. Verify that the wire colors on the "DC OUT" terminal block match – blue-to-blue, red-to-red, & black-to-black
3. Check voltage at the "DC OUT" terminal block with voltmeter. It should be 266VDC when powered on.

Note: These instructions do not cover all details or variations in equipment nor do they provide for every possible situation during installation, operation or maintenance.



Easy Answers

rablighting.com
Visit our website for product info

Tech Help Line
Call our experts: 888 722-1000

e-mail
Answered promptly - sales@rablighting.com

Free Lighting Layouts
Answered online or by request

RAB WARRANTY: RAB's warranty is subject to all terms and conditions found at rablighting.com/warranty.