

Welcome

Lightcloud[®]

Controller

LCBC-X/W

LCBC-X/B

WE'RE HERE TO HELP:

1 (844) LIGHTCLOUD

1 (844) 544-4825

Hello

The Lightcloud Blue Controller is a remotely controlled device used to enable switching and dimming. The Controller converts any standard 0-10V LED fixture or dimming circuit to allow for wireless control using the Lightcloud Blue mobile app.

Product Features

Wireless Control & Configuration

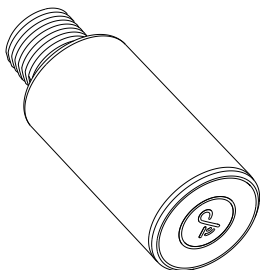
Switching up to 16A

0-10V Dimming

Patent Pending

Contents

Lightcloud Blue Controller



NPT Nut



(Outside)

Waterproof gasket



(Outside)

Wire Nuts



x 4



x 2

Specifications & Ratings

PART NUMBER

LCBC-X/W, LCBC-X/B

POWER CONSUMPTION

<1W (Standby)

INDUCTIVE and RESISTIVE LOAD

16A @ 120V or 277V

LED LOAD

8A @ 120V; 3A @ 277V

MOTOR RATING

1/2HP@120V; 1HP@240V

INPUT

120-277VAC, 50/60 Hz

DIMENSIONS:

1.36"(D) x 4.09"(L)

WIRELESS RANGE

up to 300 ft

RATINGS:

IP66 Indoor/Outdoor

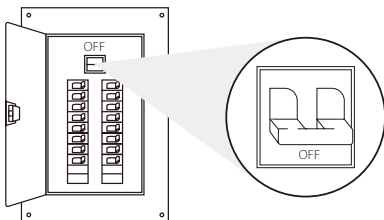
OPERATING TEMPERATURE:

Max Temp: -4°F to 140°F (-20°C to 60°C)

Setup & Installation

① Turn off power

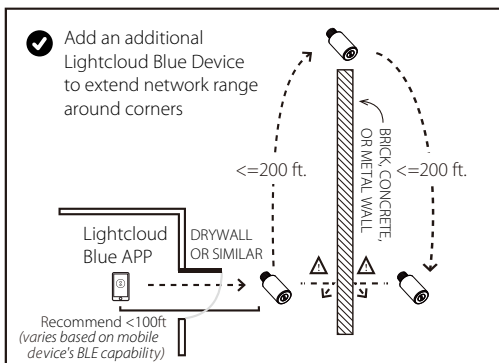
 WARNING



1a Find a suitable location

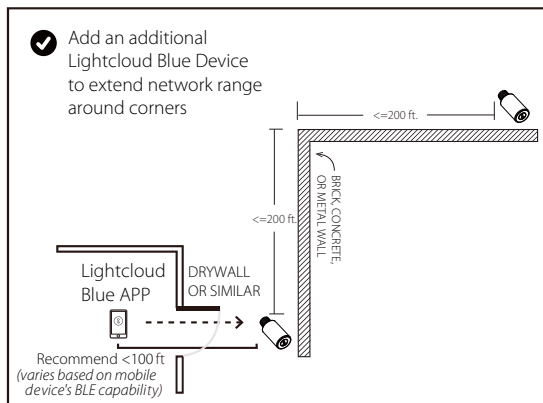
- Lightcloud Blue devices should be positioned within 60 ft. of within wireless range
- Building materials such as brick, concrete and steel construction may require additional Lightcloud Blue devices to extend around an obstruction.

INDOOR

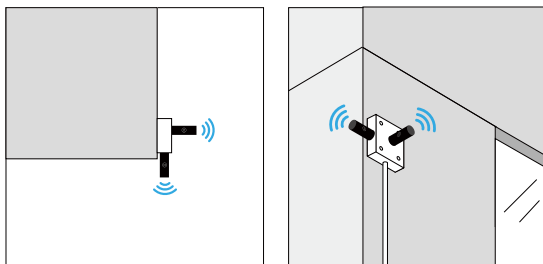


Setup & Installation *(cont'd)*

OUTDOOR



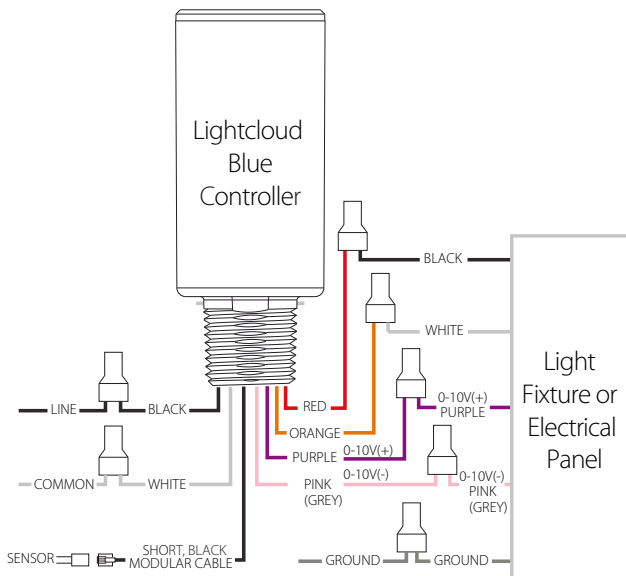
To enhance the mesh stability, add additional Controller(s) to a nearby junction box.



Setup & Installation *(cont'd)*

② Install the Lightcloud Blue Controller into a junction box

The Lightcloud Blue Controller can be mounted into a junction box, with the radio module always outside any metal enclosure. If no sensor is used, then the modular cable can be tied off and placed inside the fixture or box.



Setup & Installation *(cont'd)*

③ Install Controller

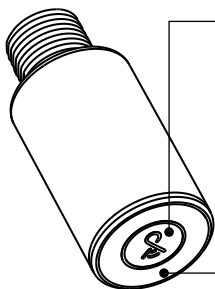
Install the Lightcloud Blue Controller to a constant power source.

Do not place Lightcloud Blue Controllers down circuit from any other non-Lightcloud Blue switching devices such as switches, sensors, or time clocks.

④ Turn power on

⑤ Verify power and local control

Confirm Status Indicator is blinking red. Confirm local control using the Device Identification Button.



DEVICE IDENTIFICATION BUTTON

- Press once to rapid identify this device in the Lightcloud Blue Application when provisioned
- Press twice to toggle circuit on and off
- Press twice and hold to set dim level
- Press and hold for 10s to reset the device to factory settings and into pairing mode


STATUS INDICATOR

Solid GREEN when connected to your Lightcloud Blue network.
Blinking RED when unprovisioned.

Controlling your Lightcloud Blue Device

- ① Confirm your device is powered on.
- ② Download the Lightcloud Blue app from the Apple® App Store or Google® Play store.



- ③ Launch the app and login or create an account.
- ④ Tap the "add device" icon in the app to start connecting devices. 
- ⑤ Select the Retrofit Downlight in the app and move it to an Area with other Lightcloud Blue-enabled lights.
- ⑥ You're all set!



*Check out the Lightcloud Blue
Mobile App User Guide
for more information on
how to maximize your system*

Functionality

Configuration

All configuration of Lightcloud Blue products may be performed using the Lightcloud Blue app.

Emergency default

If communication is lost, the Controller may optionally fall back to a specific state, such as turning the attached luminaire on.

WE'RE HERE TO HELP:

1 (844) LIGHTCLOUD

1 (844) 544-4825

support@lightcloud.com

FCC Information:

This device complies with Part 15 of the FCC Rules. Operation is subject to the following two conditions: 1. This device may not cause harmful interference, and 2. This device must accept any interference received, including interference that may cause undesired operation.

Note: This device has been tested and found to comply with the limits for Class B digital devices pursuant to Part 15 Subpart B, of the FCC rules. These limits are designed to provide reasonable protection against harmful interference in a residential environment. This equipment generates, uses, and can radiate radio frequency energy, and if not installed and used in accordance with the instruction manual, may cause harmful interference to radio communications. However, there is no guarantee that interference will not occur in a particular installation. If this equipment does cause harmful interference to radio or television reception, which can be determined by turning the equipment off and on, the user is encouraged to try and correct the interference by one or more of the following measures:

- Reorient or relocate the receiving antenna.
- Increase the separation between the equipment and receiver.
- Connect the equipment into an outlet on a circuit different from that to which the receiver is connected.
- Consult the dealer or an experienced radio/TV technician for help.

To comply with the FCC's RF exposure limits for general population / uncontrolled exposure, this transmitter must be installed to provide a separation distance of at least 20 cm from all persons and must not be co-located or operating in conjunction with any other antenna or transmitter.

CAUTION: Changes or modifications to this equipment not expressly approved by RAB Lighting may void the user's authority to operate this equipment.



Lightcloud Blue is a Bluetooth mesh wireless lighting control system that allows you to control RAB's various compatible devices. With RAB's patented Rapid Provisioning technology, devices can be quickly and easily commissioned for residential and large commercial applications using the Lightcloud Blue mobile app. Each device in a system can communicate with any other device, eliminating the need for a Gateway or Hub and maximizing the control system's reach.

Learn more at www.rablighting.com

1(844) LIGHTCLOUD

1 (844) 544-4825



©2025 RAB LIGHTING Inc.

Pat. rablighting.com/ip

P-101666