

INSTRUCTIONS

Microwave Sensor Installation



RAB Lighting is committed to creating high-quality, affordable, well-designed and energy-efficient LED lighting and controls that make it easy for electricians to install and end users to save energy. We'd love to hear your comments. Please call the Marketing Department at 888-RAB-1000 or email: marketing@rablighting.com



MVS20 / MVS20B



MVS50 / MVS50B



**OPTIONAL
REMOTE**
Not Included
(Order MSR1)

IMPORTANT

READ CAREFULLY BEFORE INSTALLING FIXTURE. RETAIN THESE INSTRUCTIONS FOR FUTURE REFERENCE.

RAB fixtures must be wired in accordance with the National Electrical Code and all applicable local codes. Proper grounding is required for safety. THIS PRODUCT MUST BE INSTALLED IN ACCORDANCE WITH THE APPLICABLE INSTALLATION CODE BY A PERSON FAMILIAR WITH THE CONSTRUCTION AND OPERATION OF THE PRODUCT AND THE HAZARDS INVOLVED.

WARNING: Make certain power is OFF before installing or maintaining fixture. No user serviceable parts inside.

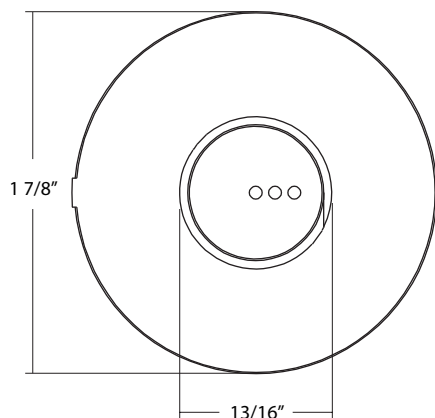
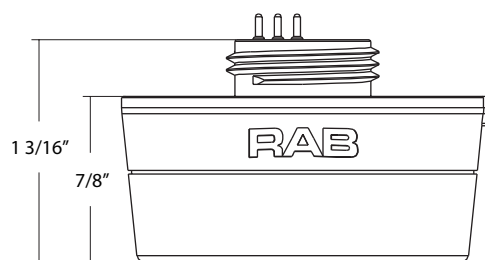
MICROWAVE SENSOR FACTORY SETTINGS

Brightness	100%
Hold Time	20 Minutes
Daylight	Disabled

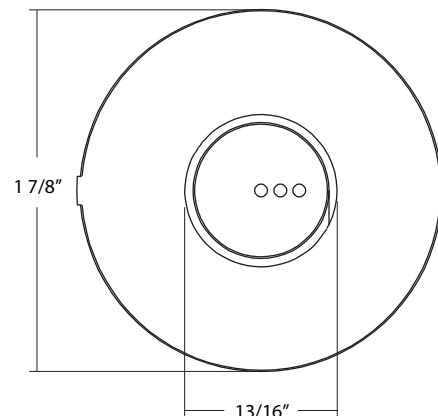
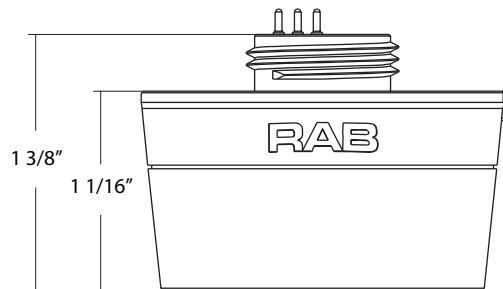
Sensitivity	100%
Stand-by Dimming Level	20%
Stand-by Time	1 Minute

DIMENSIONS

MVS20
MVS20B



MVS50
MVS50B



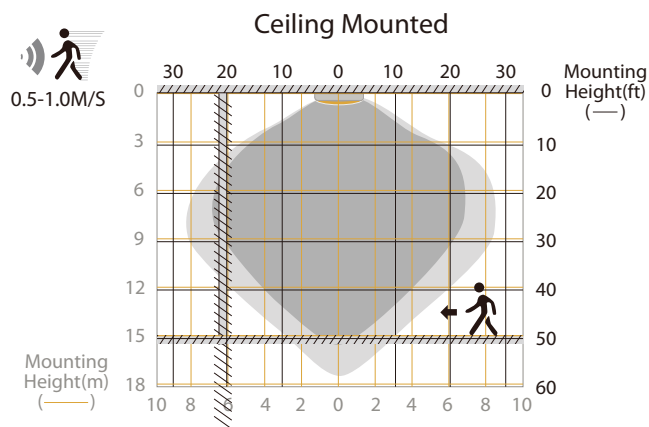
INSTRUCTIONS

Microwave Sensor Installation



RAB Lighting is committed to creating high-quality, affordable, well-designed and energy-efficient LED lighting and controls that make it easy for electricians to install and end users to save energy. We'd love to hear your comments. Please call the Marketing Department at 888-RAB-1000 or email: marketing@rablighting.com

DETECTION COVERAGE



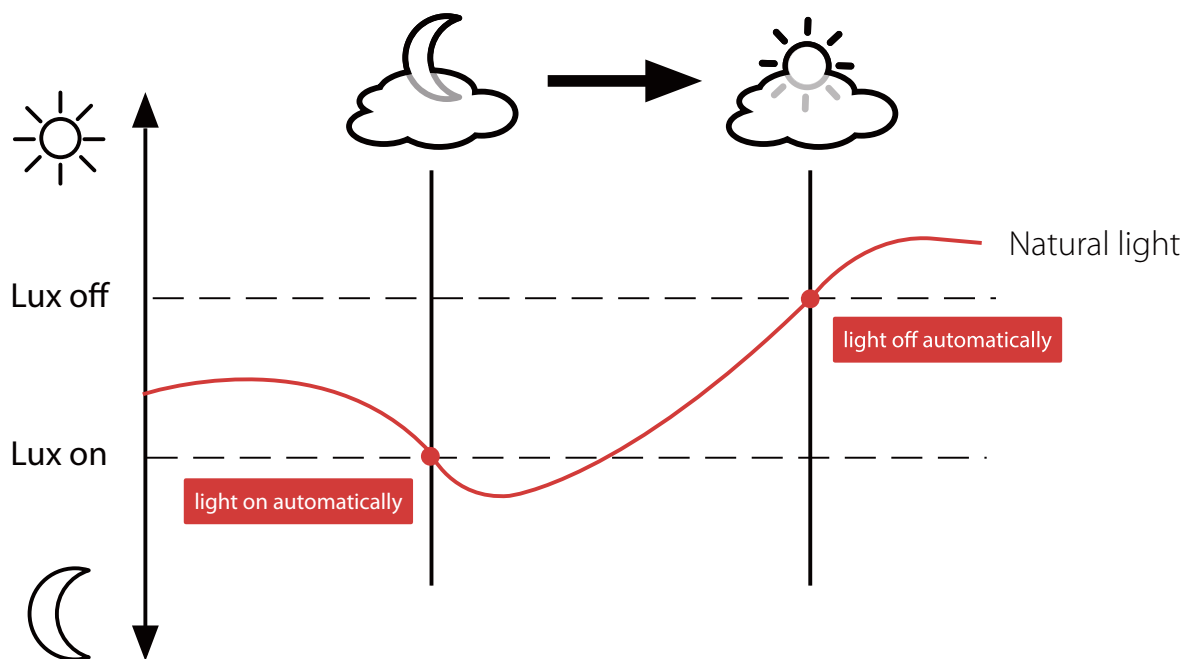
Highest mounting height is 15m/49ft:
This figure indicates the maximum distance at the highest mounting height with 100% sensitivity.

LUX ON-OFF

Sensor automatically turns on light when ambient brightness is lower than preset lux level. Following preconditions apply to use the Lux On-Off function:

Use below settings for the Lux on-off function:

- Stand-by period: Set to infinity (∞)
- Stand-by dimming level set to: 10%, 20% or 30% (*only*)
- Daylight threshold set to: 30lux, 50lux, 80lux or 120lux



INSTRUCTIONS

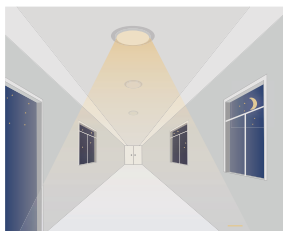
Microwave Sensor Installation



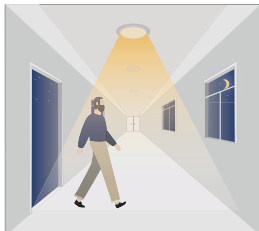
RAB Lighting is committed to creating high-quality, affordable, well-designed and energy-efficient LED lighting and controls that make it easy for electricians to install and end users to save energy. We'd love to hear your comments. Please call the Marketing Department at 888-RAB-1000 or email: marketing@rablighting.com

LUX ON-OFF (Cont'd)

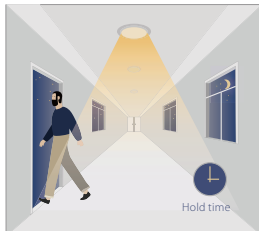
1. With Daylight Lux Setting Selected



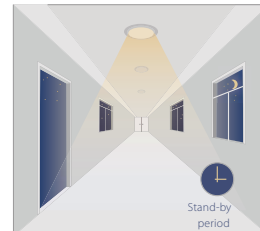
With insufficient ambient brightness, sensor turns on light and keeps it at standby dimming level even if there is no motion or presence.



When sensor detects motion or presence it will bring the light level up to 100%.



After motion is no longer detected, fixture remains at 100% for hold time.

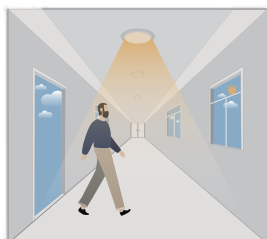


After pre-set hold time period it will dim light to standby dimming level again and always keep it.

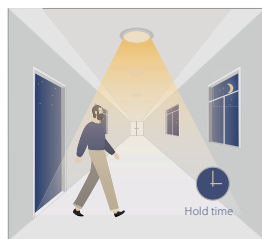


With sufficient ambient brightness, sensor will turn OFF light automatically.

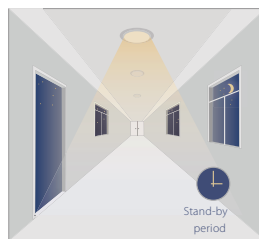
2. MICROWAVE Sensor With Daylight Threshold Disabled



Sensor turns ON light when motion is detected.



Sensor keeps for a hold time period after motion leaves.

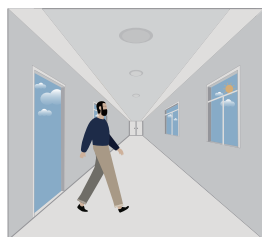


Sensor dims light to standby dimming level after hold time if there is still no motion.

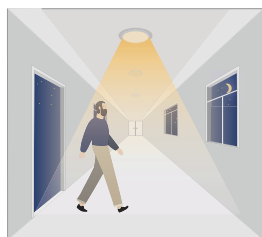


Sensor turns OFF light after standby period.

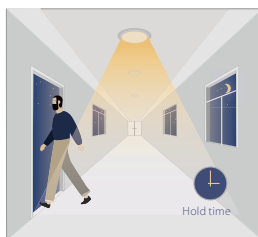
3. With Daylight Threshold



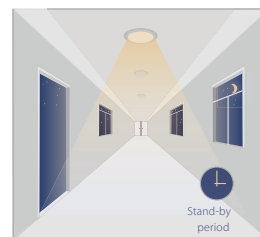
With sufficient daylight, the sensor keeps light OFF even when motion gets detected.



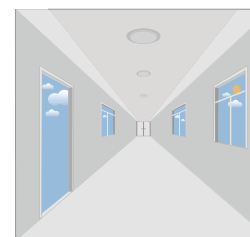
With insufficient daylight, the sensor turns light ON when motion is detected.



After there is no motion detected, the sensor keeps light ON 100% for holdtime.



After holdtime, sensor dims light to standby dimming level for standby period. If the standby period has been set as 0S, sensor turns light OFF automatically after holdtime.



The sensor turns OFF light automatically after the standby period when there is no motion detected.