

INSTRUCTIONS

TK22™ FIELD-ADJUSTABLE INSTALLATION

RAB®

RAB Lighting is committed to creating high-quality, affordable, well-designed and energy-efficient LED lighting and controls that make it easy for electricians to install and end users to save energy. We'd love to hear your comments. Please call the Marketing Department at 888-RAB-1000 or email: marketing@rablighting.com

**** DON'T TOSS IT—RECYCLE IT! MAKE THE SUSTAINABLE CHOICE BY RECYCLING THIS FIXTURE AT END OF LIFE WITH A LICENSED RECYCLING PROVIDER. ****



IMPORTANT

READ CAREFULLY BEFORE INSTALLING FIXTURE. RETAIN THESE INSTRUCTIONS FOR FUTURE REFERENCE.

RAB fixtures must be wired in accordance with the National Electrical Code and all applicable local codes. Proper grounding is required for safety. THIS PRODUCT MUST BE INSTALLED IN ACCORDANCE WITH THE APPLICABLE INSTALLATION CODE BY A PERSON FAMILIAR WITH THE CONSTRUCTION AND OPERATION OF THE PRODUCT AND THE HAZARDS INVOLVED.

WARNING:

- Make certain power is **OFF** before installing or maintaining fixture. No user serviceable parts inside.
 - Fixture supports 120V Triac dimming.
 - For use with Ceiling mounted RAB TK Track System **ONLY**.
- Do not install near a heat source or in a corrosive gas environment.**
- Not suitable for wet or damp locations.**

TRACK MOUNT INSTALLATION

1. Install the **Track System** onto the **Ceiling** as shown in Fig. 1. Refer to TK Track Instructions.
2. Install the Fixture onto the Track System as shown in Fig. 2.
3. Connect wires as shown in wiring diagram (Fig. 15). Use appropriate UL approved wire connectors as required by code to complete wiring. Be careful not pinch wires.
Warning: to prevent wiring damage or abrasion, do not expose wiring to edges of sheet metal or other sharp objects.
4. Manually adjust the **Beam Angle** as desired by rotating the fixture **Ring**, 15°-55° as shown in Fig. 3.

Fig: 1

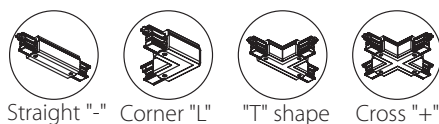
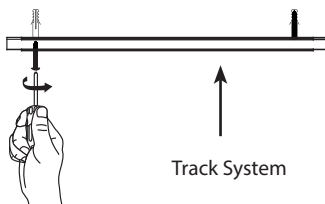


Fig: 2

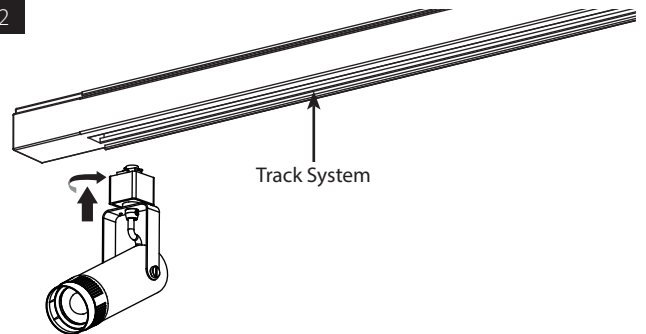
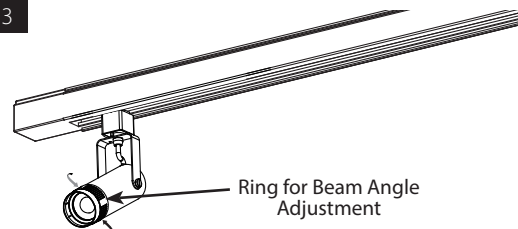


Fig: 3



INSTRUCTIONS

TK22™ FIELD-ADJUSTABLE INSTALLATION



RAB Lighting is committed to creating high-quality, affordable, well-designed and energy-efficient LED lighting and controls that make it easy for electricians to install and end users to save energy. We'd love to hear your comments. Please call the Marketing Department at 888-RAB-1000 or email: marketing@rablighting.com

**** DON'T TOSS IT—RECYCLE IT! MAKE THE SUSTAINABLE CHOICE BY RECYCLING THIS FIXTURE AT END OF LIFE WITH A LICENSED RECYCLING PROVIDER. ****

FIELD ADJUSTMENT (TK22)

Color Temperature (CCT) Selection:

This product is equipped with 2700/3000/3500/4000

Color Temperature selection.

Power (Wattage) Selection:

This product is equipped with Power (W) output selection.

TK22S 8/6/4W

TK22M 20/15/10W

TK22L 30/25/20W

Follow instructions below to change **Color Temperature (CCT)** and/or **Power (W)** from factory settings.

Factory Settings:

TK22S 8W / TK22M 20W / TK22L 30W (4000K) / Beam Angle 55°

1. Locate the **Selector Switches** for Field-Adjustment on back of housing as shown in Fig. 4. Select **Power (W)** and/or **Color Temperature (CCT)** by sliding the respective switch to the desired setting.

Fig: 5

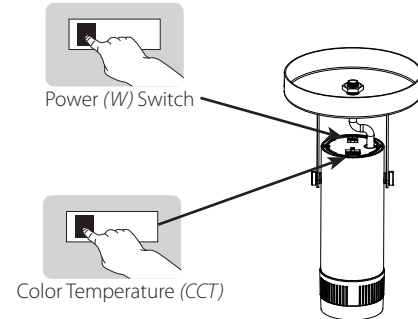


Fig: 6

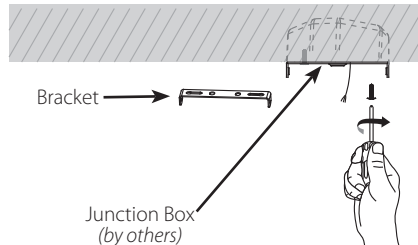


Fig: 7

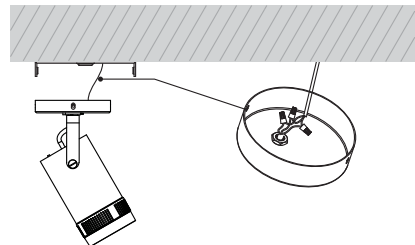


Fig: 8

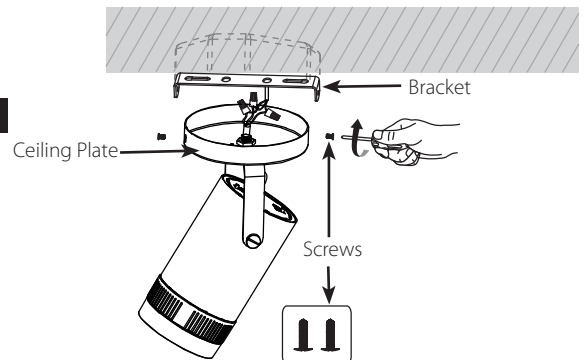


Fig: 9

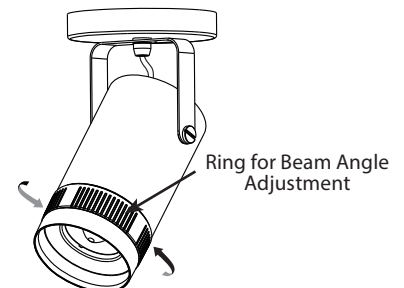
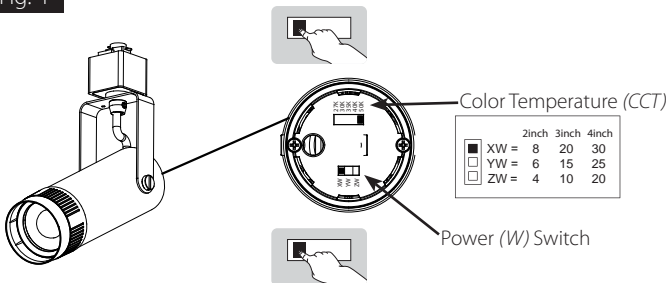


Fig: 4



CEILING MOUNT INSTALLATION (TK22)

1. Select **Color Temperature (CCT)** and/or **Power (W)** as shown in Fig. 5 to the desired setting.

Factory Settings: TK22S 8W / TK22M 20W / TK22L 30W (5000K)

2. Attach the **Bracket** to the **Junction Box (by others)** as show in Fig. 6.
3. **Connect wires** as shown in wiring diagram (Fig. 7 & 15). Use appropriate UL approved wire connectors as required by code to complete wiring. Be careful not to pinch wires. **WARNING:** To prevent wiring damage or abrasion, do not expose wiring to edges of sheet metal or other sharp objects.
4. Attach the **Ceiling Plate** to the **Bracket** and tighten **Screws (2)** as shown in Fig. 8.
5. Manually adjust the **Beam Angle** as desired by rotating the the fixture **Ring**, 15° -55°, see Fig. 9.

INSTRUCTIONS

TK22™ FIELD-ADJUSTABLE INSTALLATION



RAB Lighting is committed to creating high-quality, affordable, well-designed and energy-efficient LED lighting and controls that make it easy for electricians to install and end users to save energy. We'd love to hear your comments. Please call the Marketing Department at 888-RAB-1000 or email: marketing@rablighting.com

**** DON'T TOSS IT—RECYCLE IT! MAKE THE SUSTAINABLE CHOICE BY RECYCLING THIS FIXTURE AT END OF LIFE WITH A LICENSED RECYCLING PROVIDER. ****

PENDANT MOUNT INSTALLATION (TKPS / TKPM)

1. Install the **Track System** onto the **Mounting Surface** as shown in Fig. 10. Refer to **TK Track System** installation Instructions.
2. Install the **Cylinder** onto the **Track System** as shown in Fig. 11.
3. See Fig. 12 for Color Temperature (CCT), Power (W) adjustment as needed.

Fig: 10

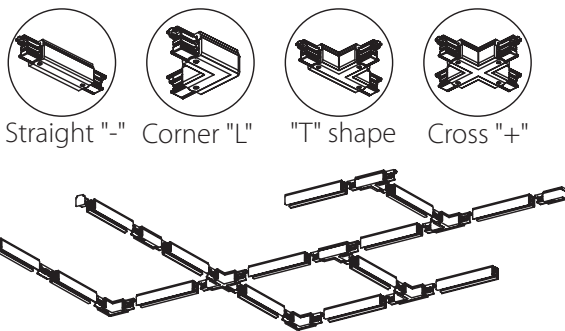
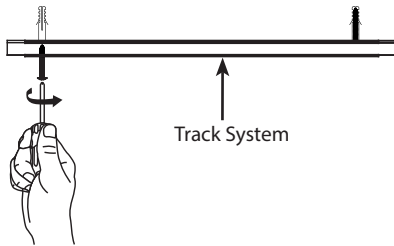
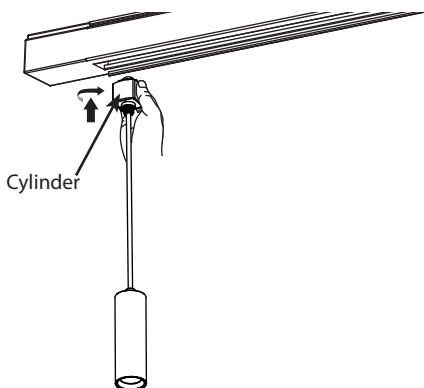


Fig: 11



TKPS (PENDANT SMALL)

This product is equipped with 3000K Color Temperature (CCT), 8W Power (W).

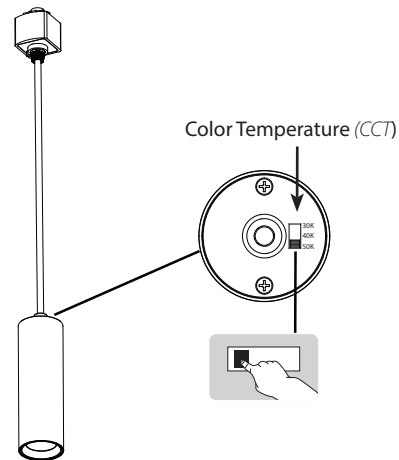
TKPM (PENDANT MEDIUM)

This product is equipped with 3000/4000/5000K Color Temperature (CCT), 8W Power (W) setting.

Factory setting: 8W, 4000K CCT

1. Locate the **Selector Switch** for CCT Field-Adjustment on back of housing as shown in Fig. 12. Select **Color Temperature (CCT)** by sliding the respective switch to the desired setting

Fig: 12



INSTRUCTIONS

TK22™ FIELD-ADJUSTABLE INSTALLATION



RAB Lighting is committed to creating high-quality, affordable, well-designed and energy-efficient LED lighting and controls that make it easy for electricians to install and end users to save energy. We'd love to hear your comments. Please call the Marketing Department at 888-RAB-1000 or email: marketing@rablighting.com

**** DON'T TOSS IT—RECYCLE IT! MAKE THE SUSTAINABLE CHOICE BY RECYCLING THIS FIXTURE AT END OF LIFE WITH A LICENSED RECYCLING PROVIDER. ****

OPTICS ACCESSORIES

Optic accessories are ordered separately (Fig. 13). Install **Optics** as shown in Fig. 14 (see *Optic accessory model # list below*).

Manually adjust the **Beam Angle** as desired by rotating the fixture **Ring**, 15° -55°.

Fig: 13

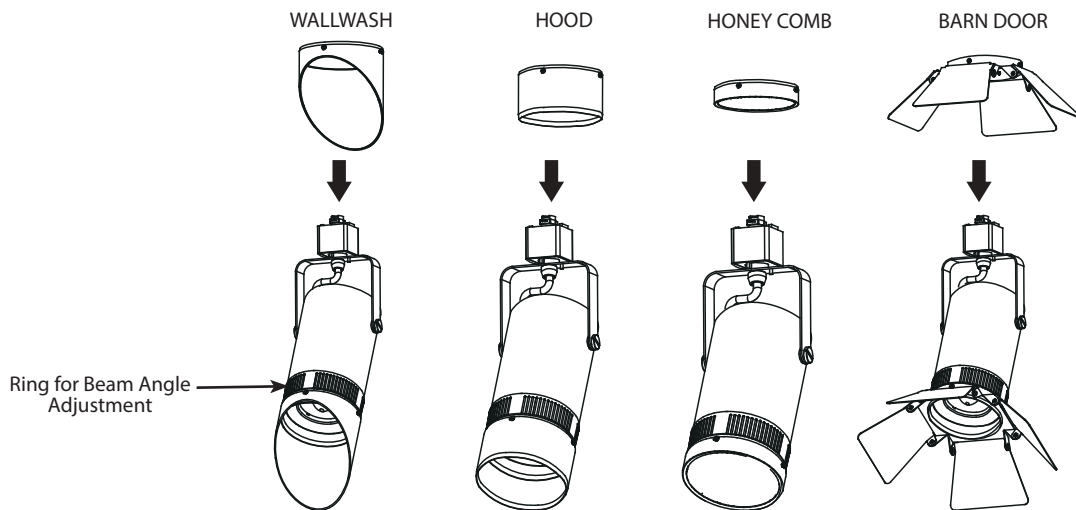
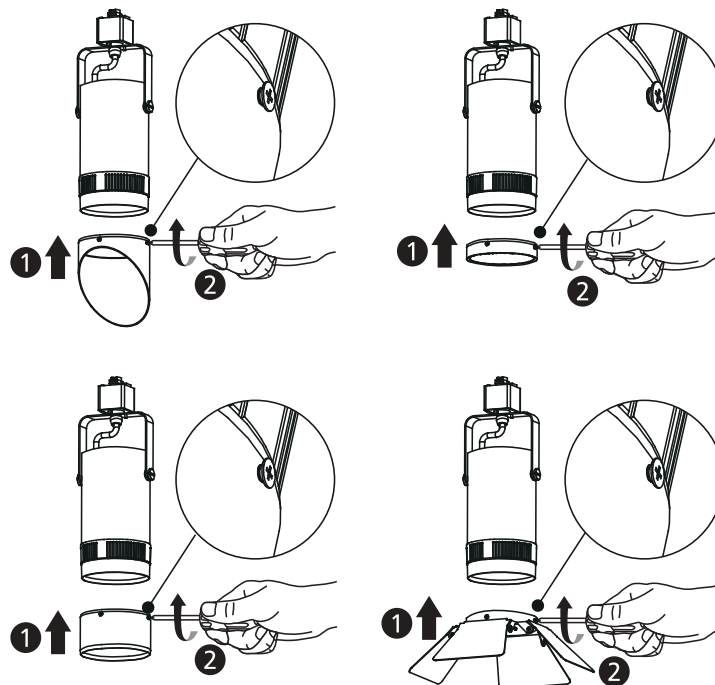


Fig: 14



INSTRUCTIONS

TK22™ FIELD-ADJUSTABLE INSTALLATION



RAB Lighting is committed to creating high-quality, affordable, well-designed and energy-efficient LED lighting and controls that make it easy for electricians to install and end users to save energy. We'd love to hear your comments. Please call the Marketing Department at 888-RAB-1000 or email: marketing@rablighting.com

**** DON'T TOSS IT—RECYCLE IT! MAKE THE SUSTAINABLE CHOICE BY RECYCLING THIS FIXTURE AT END OF LIFE WITH A LICENSED RECYCLING PROVIDER. ****

OPTIC ACCESSORY LIST

Optic accessories are sold separately, available in white and black.

- TK22S-WW (Wall Wash, Small)
- TK22M-WW (Wall Wash, Medium)
- TL22S-H (Hood, Small)
- TK22M-H (Hood, Medium)
- TK22S-HC (Honey Comb, Small)
- TK22M-HC (Honey Comb, Medium)
- TK22S-BD (Barn Door, Small)
- TK22M-BD (Barn Door, Medium)

WIRING

Units are 120V only and dimmable with a Triac dimmer, follow the wiring directions as shown in Fig. 15.

1. Connect the black fixture lead to the LINE supply lead. Be sure the fixture is grounded properly.
2. Connect the white fixture lead to the COMMON supply lead.
3. Connect the GROUND wire from fixture to supply ground.

CLEANING & MAINTENANCE

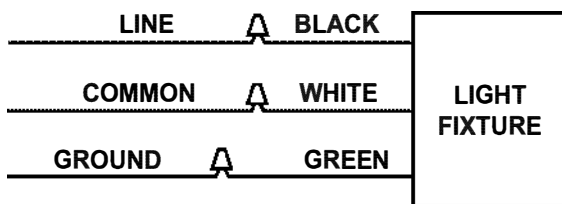
CAUTION: Be sure fixture temperature is cool enough to touch. Do not clean or maintain while fixture is energized.

1. Lens can be washed only after removing from fixture and only in a solution of warm water and any mild, non-abrasive household detergent, rinsed with clean water and wiped dry. Do not use chemicals to clean Lens or fixture.
2. Do not open fixture to clean the LED. Do not touch the LED.

TROUBLESHOOTING

1. Check that the line voltage at the fixture is correct.
2. Be sure the fixture is grounded properly.

Fig: 15



Note: These instructions do not cover all details or variations in equipment nor do they provide for every possible situation during installation, operation or maintenance.



© 2025 RAB LIGHTING Inc.

TK22- 0925
P-102215

Easy Answers

rablighting.com
Visit our website for product info

Tech Help Line
Call our experts: 888 722-1000

e-mail
Answered promptly - tech@rablighting.com

Free Lighting Layouts
Answered online or by request

RAB WARRANTY: RAB's warranty is subject to all terms and conditions found at rablighting.com/warranty