

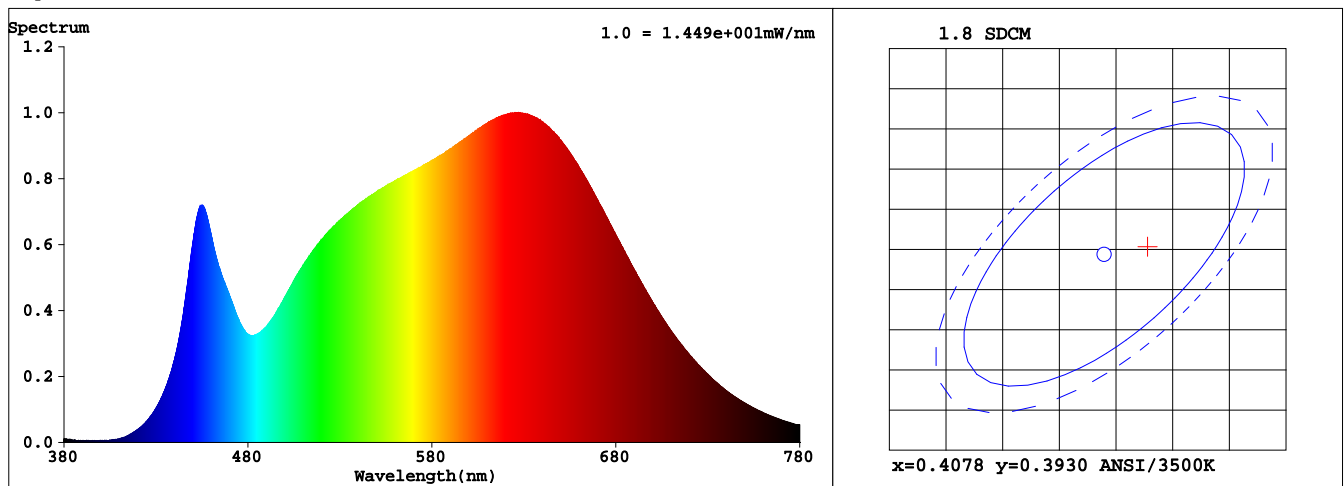
Spectrum Test Report

Sample	:	Date	: 2019-01-13 09:48:43
Specification	: A19-10-E26-835-DIM	Sam. Status	:
Sample No.	: A1900444A001	Instrument	: HaasSuite(EVERFINE)
Manufacturer	: RAB LIGHTING INC	Test by	: 胡雅文
		Assessor	: damin

Test Condition

Temperature	: 25.2Deg	RH	: 50%
WL Range	: 380nm-780nm	IP	: 50285 (77%)
Test Mode	: Fast Test	T	: 133 ms
		Delicacy	: High

Spectrum



Spectral Distribution

CIE1931 Chromaticity Diagram

Colorimetric Parameters

Chromaticity Coordinate: $x = 0.4111$ $y = 0.3938$ / $u' = 0.2382$ $v' = 0.5134$ ($duv=9.35e-05$)

CCT= 3401K Prcp WL: $L_d=581.2nm$ Purity=41.6%

Peak WL: $L_p=627nm$ FWHM: =186.2nm Ratio:R=22.1% G=74.4% B=3.5%

Render Index: $R_a = 94.2$

R1 =95	R2 =97	R3 =96	R4 =94	R5 =93	R6 =94	R7 =96	
R8 =89	R9 =75	R10=90	R11=93	R12=76	R13=95	R14=97	R15=93

Photometric & Radiometric Parameters

Flux = 824.06 lm Eff. : 87.09 lm/W $F_e = 2.9669 W$

Flux of emitted photons($\mu mol/s$):14.629 Fluo. and blue light ratio:7.641 Fluorescent eff.:203.6

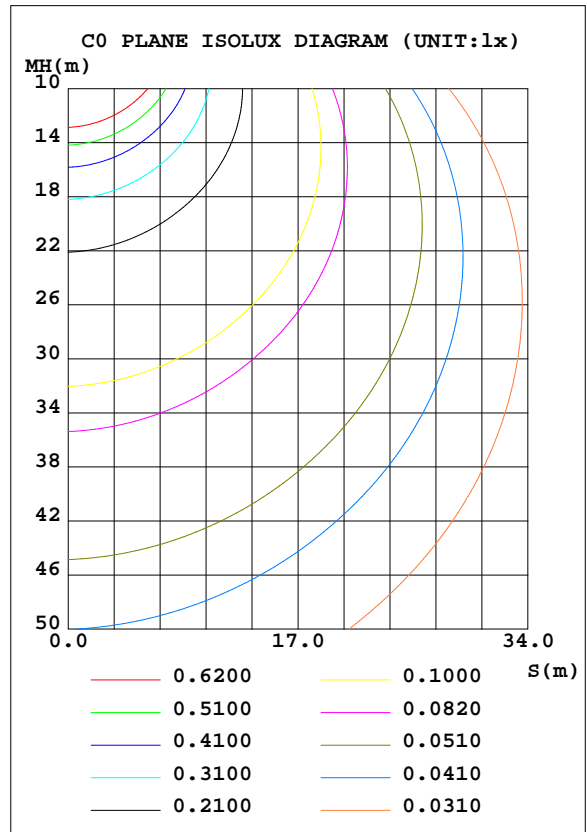
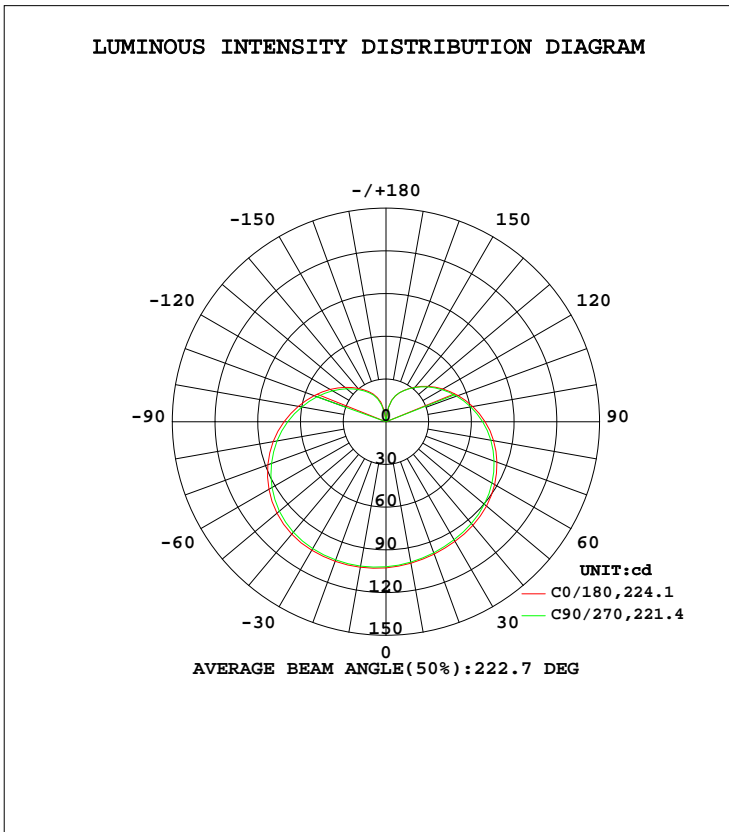
Electrical parameters

$V = 120.0 V$ $I = 0.1074 A$ $P = 9.462 W$ PF = 0.7342

LUMINAIRE PHOTOMETRIC TEST REPORT

NAME: A19-10-E26-835-DIM	TYPE:LED	WEIGHT:
SPEC.:120V/10W/800LM	DIM.:	SERIAL No.:A1900444A001
MFR.: RAB LIGHTING INC	SUR.:	Shielding Angle:

DATA OF LAMP		PHOTOMETRIC DATA Eff: 87.97 lm/W			
MODEL		I _{max} (cd)	105.2	S/MH(C0/180)	1.55
NOMINAL POWER(W)	10	LOR(%)	100.0	S/MH(C90/270)	1.53
RATED VOLTAGE(V)	120	TOTAL FLUX(lm)	832.23	η UP, DN(C0-180)	16.8, 32.7
NOMINAL FLUX(lm)	832.229	CIE CLASS	SEMI-D.	η UP, DN(C180-360)	16.3, 34.2
LAMPS INSIDE	1	η up(%)	33.1	CIBSE SHR NOM	1.75
TEST VOLTAGE(V)	120	η down(%)	66.9	CIBSE SHR MAX	1.75



C Range: 0 - 360DEG
 C Interval: 22.5DEG
 Test Speed: HIGH
 Temperature:25.3DEG
 Operators:胡雅文
 Test Date:2019-01-13

γ Range: 0 - 180DEG
 γ Interval: 5.0DEG
 Test System:EVERFINE GO-SPEX500_V1 SYSTEM V2.0.363T
 Humidity:40%
 Test Distance:5.000m [K=1.0000]
 Remarks:

ZONAL FLUX DIAGRAM

ZONAL FLUX DIAGRAM:

γ	C0	C45	C90	C135	C180	C225	C270	C315	γ	Φ zone	Φ total	%lum, lamp
10	100.9	99.82	100.1	101.3	103.8	103.9	103.0	101.3	0- 10	9.723	9.723	1.17,1.17
20	98.90	97.30	97.96	100.5	104.3	104.9	103.3	100.4	10- 20	28.71	38.44	4.62,4.62
30	97.02	94.85	95.72	99.25	104.2	105.1	102.9	99.22	20- 30	46.42	84.86	10.2,10.2
40	94.99	92.40	93.32	97.56	103.1	103.8	101.2	97.39	30- 40	62.09	147.0	17.7,17.7
50	92.13	89.38	90.18	94.56	99.98	100.5	97.75	94.24	40- 50	74.66	221.6	26.6,26.6
60	88.12	85.47	85.98	90.15	94.92	94.93	92.41	89.64	50- 60	83.00	304.6	36.6,36.6
70	82.90	80.49	80.82	84.41	88.27	87.73	85.54	83.65	60- 70	86.56	391.2	47,47
80	76.76	74.61	74.76	77.67	80.44	79.44	77.72	76.80	70- 80	85.40	476.6	57.3,57.3
90	69.63	68.01	67.93	70.02	71.66	70.25	69.00	68.94	80- 90	80.04	556.6	66.9,66.9
100	61.84	60.62	60.44	61.73	62.58	60.98	60.12	60.65	90-100	71.17	627.8	75.4,75.4
110	53.91	53.09	52.82	53.54	53.78	52.15	51.57	52.44	100-110	60.29	688.1	82.7,82.7
120	46.12	45.68	45.37	45.67	45.42	43.88	43.50	44.52	110-120	48.58	736.6	88.5,88.5
130	38.69	38.45	38.16	38.18	37.69	36.34	36.09	37.08	120-130	37.05	773.7	93,93
140	31.75	31.71	31.46	31.32	30.73	29.61	29.45	30.29	130-140	26.48	800.2	96.1,96.1
150	25.52	25.61	25.42	25.21	24.57	23.73	23.61	24.27	140-150	17.46	817.6	98.2,98.2
160	19.43	19.70	19.56	19.09	18.20	17.65	17.05	18.13	150-160	10.14	827.8	99.5,99.5
170	10.09	10.42	10.26	9.590	8.312	6.910	5.652	6.078	160-170	4.083	831.9	100,100
180	0.9672	0.9597	0.9597	0.9537	0.9702	0.9642	0.9657	0.9567	170-180	0.3573	832.2	100,100
DEG	LUMINOUS INTENSITY:cd									UNIT:lm		

Conical surface Flux(90deg): 182.95 lm

%lum = 22.0%
%lamp = 22.0%

Conical surface Flux(120deg): 304.62 lm

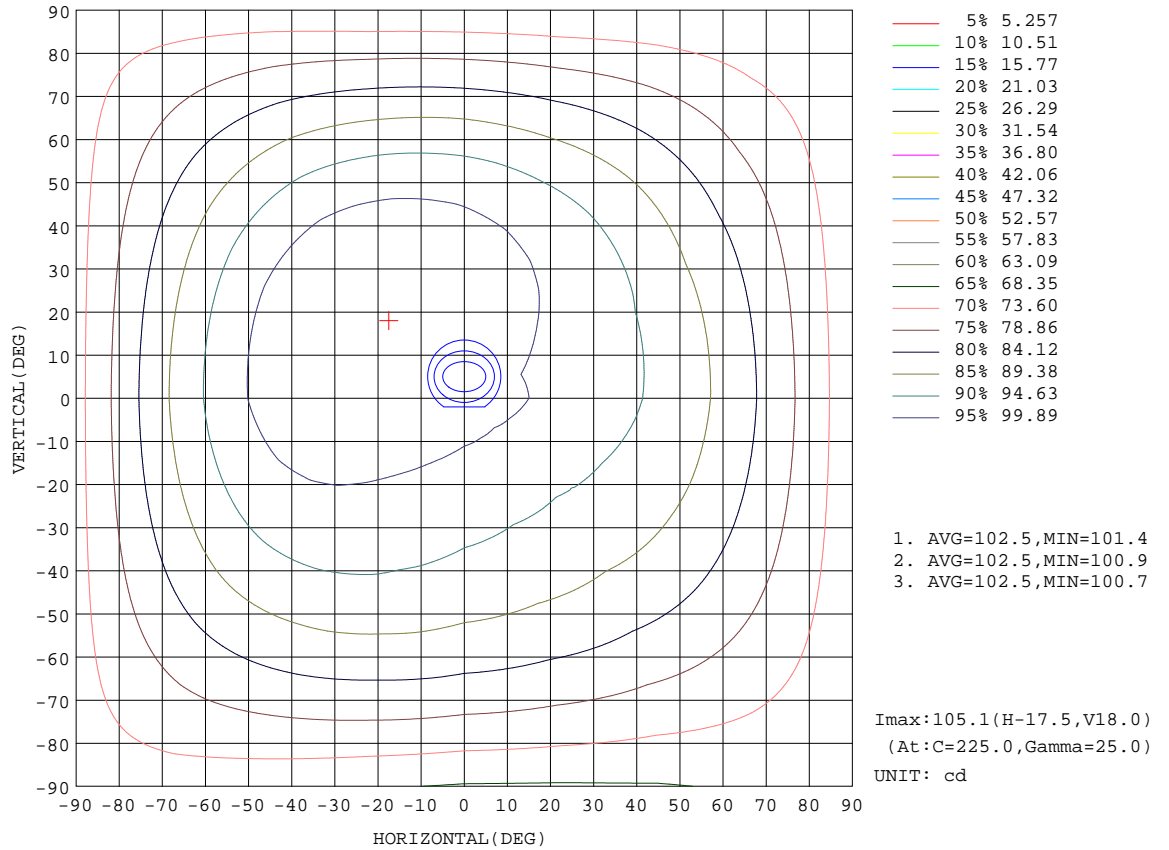
%lum = 36.6%
%lamp = 36.6%

C Range: 0 - 360DEG
C Interval: 22.5DEG
Test Speed: HIGH
Temperature:25.3DEG
Operators:胡雅文
Test Date:2019-01-13

γ Range: 0 - 180DEG
γ Interval: 5.0DEG
Test System:EVERFINE GO-SPEX500_V1 SYSTEM V2.0.363T
Humidity:40%
Test Distance:5.000m [K=1.0000]
Remarks:

ISOCANDELA DIAGRAM

NAME: A19-10-E26-835-DIM	TYPE:LED	WEIGHT:
SPEC.:120V/10W/800LM	DIM.:	SERIAL No.:A1900444A001
MFR.: RAB LIGHTING INC	SUR.:	Shielding Angle:

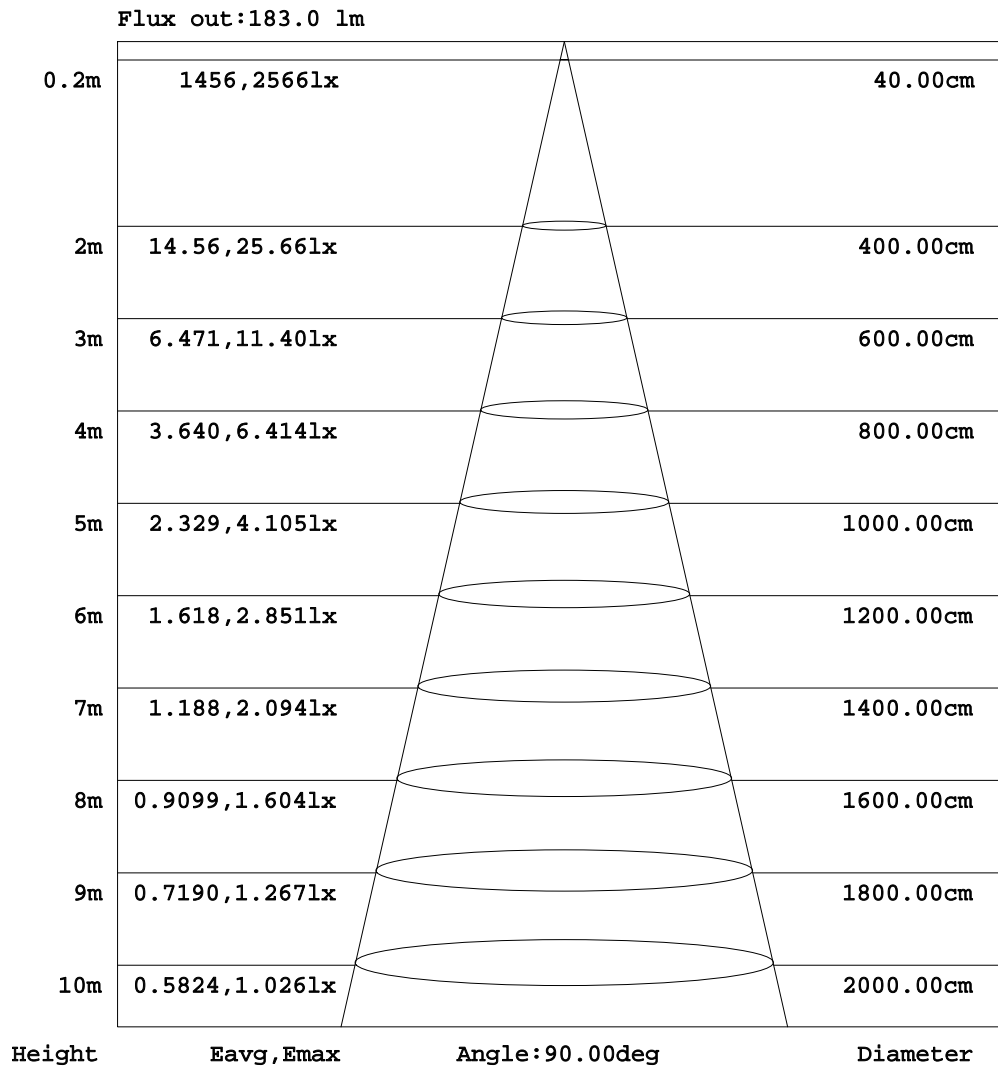


C Range: 0 - 360DEG
 C Interval: 22.5DEG
 Test Speed: HIGH
 Temperature:25.3DEG
 Operators:胡雅文
 Test Date:2019-01-13

γ Range: 0 - 180DEG
 γ Interval: 5.0DEG
 Test System:EVERFINE GO-SPEX500_V1 SYSTEM V2.0.363T
 Humidity:40%
 Test Distance:5.000m [K=1.0000]
 Remarks:

AAI Figure

NAME: A19-10-E26-835-DIM	TYPE:LED	WEIGHT:
SPEC.:120V/10W/800LM	DIM.:	SERIAL No.:A1900444A001
MFR.: RAB LIGHTING INC	SUR.:	Shielding Angle:



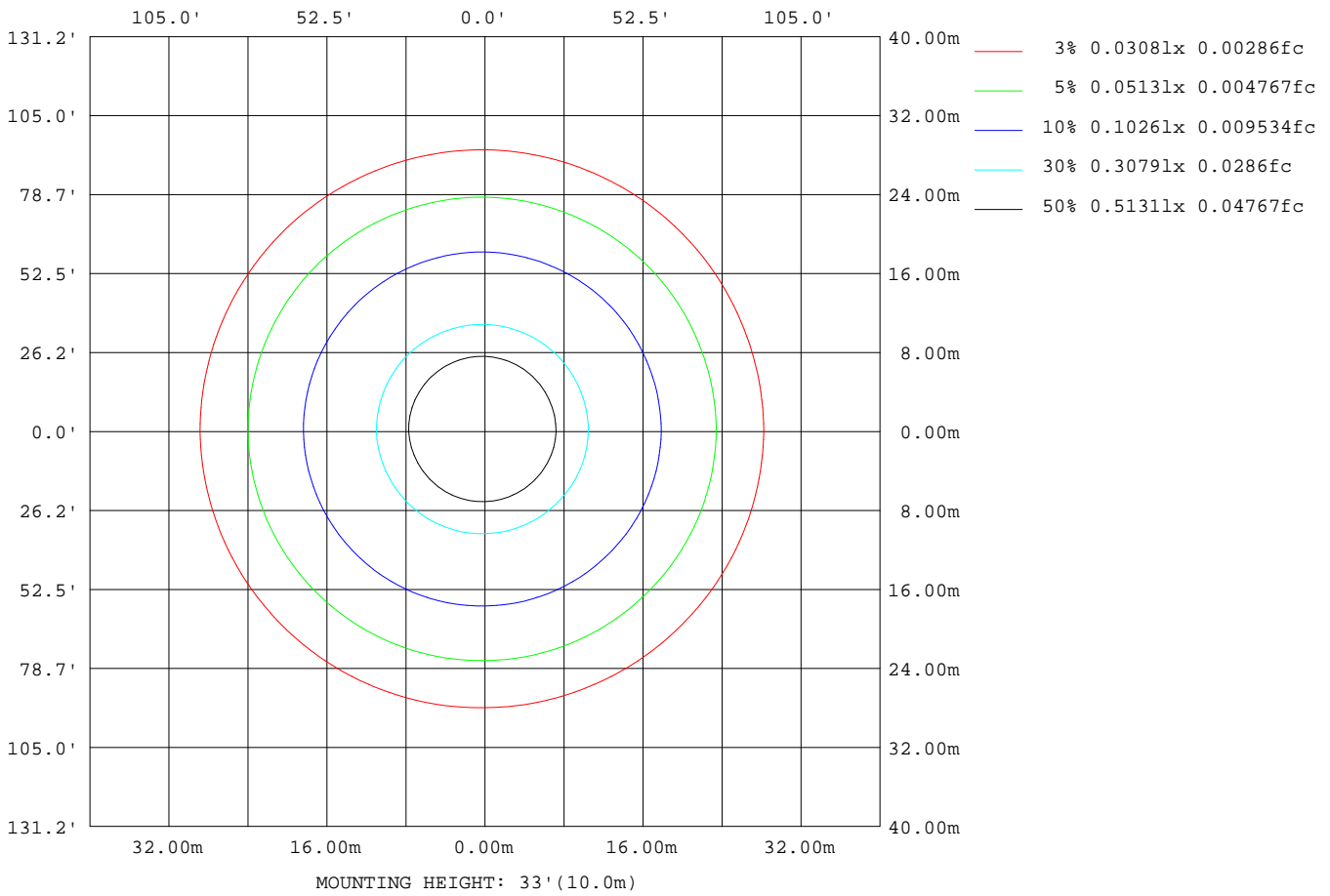
Note:The Curves indicate the illuminated area and the average illumination when the luminaire is at different distance.

C Range: 0 - 360DEG
 C Interval: 22.5DEG
 Test Speed: HIGH
 Temperature:25.3DEG
 Operators:胡雅文
 Test Date:2019-01-13

γ Range: 0 - 180DEG
 γ Interval: 5.0DEG
 Test System:EVERFINE GO-SPEX500_V1 SYSTEM V2.0.363T
 Humidity:40%
 Test Distance:5.000m [K=1.0000]
 Remarks:

ISOLUX DIAGRAM

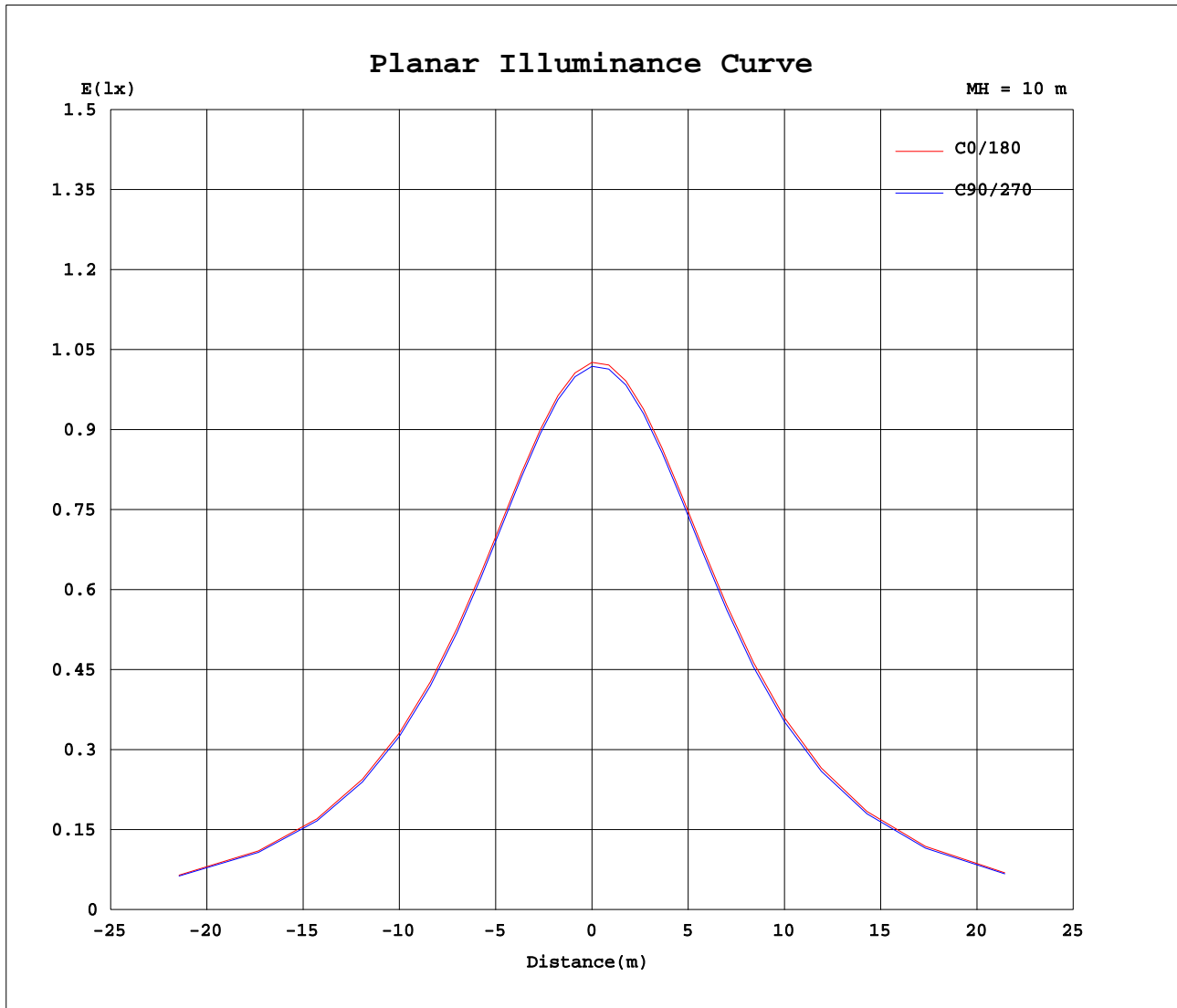
NAME: A19-10-E26-835-DIM	TYPE:LED	WEIGHT:
SPEC.:120V/10W/800LM	DIM.:	SERIAL No.:A1900444A001
MFR.: RAB LIGHTING INC	SUR.:	Shielding Angle:



C Range: 0 - 360DEG
 C Interval: 22.5DEG
 Test Speed: HIGH
 Temperature:25.3DEG
 Operators:胡雅文
 Test Date:2019-01-13

γ Range: 0 - 180DEG
 γ Interval: 5.0DEG
 Test System:EVERFINE GO-SPEX500_V1 SYSTEM V2.0.363T
 Humidity:40%
 Test Distance:5.000m [K=1.0000]
 Remarks:

Planar Illuminance Curve



C Range: 0 - 360DEG
 C Interval: 22.5DEG
 Test Speed: HIGH
 Temperature: 25.3DEG
 Operators: 胡雅文
 Test Date: 2019-01-13

γ Range: 0 - 180DEG
 γ Interval: 5.0DEG
 Test System: EVERFINE GO-SPEX500_V1 SYSTEM V2.0.363T
 Humidity: 40%
 Test Distance: 5.000m [K=1.0000]
 Remarks:

LUMINOUS DISTRIBUTION INTENSITY DATA

NAME: A19-10-E26-835-DIM	TYPE:LED	WEIGHT:
SPEC.:120V/10W/800LM	DIM.:	SERIAL No.:A1900444A001
MFR.: RAB LIGHTING INC	SUR.:	Shielding Angle:

Table--1

UNIT: cd

C(DEG) γ (DEG)	0	22.5	45	67.5	90	112.5	135	157.5	180	202.5	225	247.5	270	292.5	315	337.5			
0	103	102	102	102	102	102	102	102	103	102	102	102	102	102	102	102			
5	102	101	101	101	101	101	102	102	103	103	103	103	103	102	102	101			
10	101	100	99.8	99.9	100	101	101	102	104	104	104	104	103	102	101	100			
15	99.9	99.1	98.5	98.7	99.1	99.9	101	102	104	105	104	104	103	102	101	99.8			
20	98.9	97.9	97.3	97.4	98.0	99.1	100	102	104	105	105	104	103	102	100	99.0			
25	97.9	96.8	96.0	96.1	96.8	98.2	99.9	102	104	105	105	104	103	102	99.8	98.3			
30	97.0	95.7	94.8	94.9	95.7	97.3	99.3	101	104	105	105	104	103	101	99.2	97.5			
35	96.1	94.6	93.7	93.7	94.6	96.3	98.5	101	104	105	105	104	102	100	98.4	96.6			
40	95.0	93.5	92.4	92.4	93.3	95.2	97.6	100	103	104	104	103	101	99.2	97.4	95.6			
45	93.7	92.2	91.0	91.0	91.9	93.8	96.2	98.9	102	103	102	101	99.7	97.8	96.0	94.3			
50	92.1	90.6	89.4	89.3	90.2	92.2	94.6	97.2	100.0	101	100	99.3	97.7	95.8	94.2	92.7			
55	90.3	88.8	87.5	87.4	88.2	90.2	92.5	95.1	97.7	98.2	98.0	96.7	95.3	93.5	92.1	90.6			
60	88.1	86.7	85.5	85.3	86.0	87.9	90.1	92.6	94.9	95.3	94.9	93.7	92.4	90.8	89.6	88.3			
65	85.7	84.3	83.1	82.9	83.5	85.3	87.4	89.8	91.8	91.9	91.5	90.3	89.2	87.7	86.7	85.7			
70	82.9	81.7	80.5	80.3	80.8	82.4	84.4	86.5	88.3	88.2	87.7	86.6	85.5	84.4	83.6	82.8			
75	79.9	78.8	77.6	77.5	77.9	79.4	81.2	83.0	84.5	84.2	83.7	82.6	81.7	80.8	80.3	79.6			
80	76.8	75.8	74.6	74.4	74.8	76.1	77.7	79.3	80.4	80.0	79.4	78.4	77.7	77.0	76.8	76.3			
85	73.4	72.5	71.4	71.3	71.5	72.6	74.0	75.4	76.2	75.6	75.0	74.0	73.5	73.0	73.0	72.7			
90	69.6	69.0	68.0	67.8	67.9	68.9	70.0	71.1	71.7	70.9	70.3	69.3	69.0	68.7	68.9	68.8			
95	65.8	65.2	64.3	64.2	64.2	65.0	65.9	66.8	67.1	66.2	65.6	64.7	64.5	64.4	64.8	64.8			
100	61.8	61.5	60.6	60.5	60.4	61.1	61.7	62.5	62.6	61.6	61.0	60.2	60.1	60.1	60.6	60.8			
105	57.9	57.6	56.9	56.8	56.6	57.2	57.6	58.2	58.1	57.1	56.5	55.7	55.8	55.9	56.5	56.7			
110	53.9	53.8	53.1	53.0	52.8	53.3	53.5	54.0	53.8	52.7	52.1	51.5	51.6	51.7	52.4	52.7			
115	50.0	49.9	49.3	49.3	49.0	49.4	49.5	49.8	49.5	48.5	47.9	47.3	47.5	47.6	48.4	48.7			
120	46.1	46.1	45.7	45.6	45.4	45.5	45.7	45.8	45.4	44.5	43.9	43.4	43.5	43.8	44.5	45.0			
125	42.4	42.4	42.0	41.9	41.7	41.8	41.9	41.9	41.5	40.6	40.0	39.6	39.7	40.0	40.7	41.2			
130	38.7	38.8	38.5	38.4	38.2	38.2	38.2	38.2	37.7	36.9	36.3	35.9	36.1	36.4	37.1	37.5			
135	35.1	35.3	35.0	34.9	34.7	34.8	34.7	34.6	34.1	33.4	32.9	32.5	32.7	33.0	33.6	34.0			
140	31.8	31.9	31.7	31.7	31.5	31.5	31.3	31.2	30.7	30.0	29.6	29.3	29.5	29.7	30.3	30.7			
145	28.5	28.7	28.6	28.5	28.4	28.3	28.2	28.1	27.6	26.9	26.6	26.3	26.4	26.7	27.2	27.5			
150	25.5	25.7	25.6	25.6	25.4	25.4	25.2	25.1	24.6	24.0	23.7	23.5	23.6	23.8	24.3	24.6			
155	22.7	22.9	22.8	22.8	22.7	22.6	22.3	22.2	21.6	21.2	21.0	20.7	20.7	21.0	21.4	21.7			
160	19.4	19.6	19.7	19.6	19.6	19.5	19.1	18.7	18.2	17.9	17.6	17.2	17.1	17.6	18.1	18.1			
165	15.6	15.7	15.8	15.8	15.7	15.6	15.1	14.6	14.2	13.8	13.5	13.0	12.1	13.4	14.1	13.9			
170	10.1	10.5	10.4	10.2	10.3	10.3	9.59	9.34	8.31	7.14	6.91	6.20	5.65	5.31	6.08	8.06			
175	1.01	1.10	1.02	1.08	1.00	1.01	0.96	0.96	0.89	0.89	0.89	0.89	0.88	0.89	0.89	0.89			
180	0.97	0.97	0.96	0.96	0.96	0.96	0.95	0.95	0.97	0.97	0.96	0.96	0.97	0.96	0.96	0.95			

C Range: 0 - 360DEG
 C Interval: 22.5DEG
 Test Speed: HIGH
 Temperature:25.3DEG
 Operators:胡雅文
 Test Date:2019-01-13

γ Range: 0 - 180DEG
 γ Interval: 5.0DEG
 Test System:EVERFINE GO-SPEX500_V1 SYSTEM V2.0.363T
 Humidity:40%
 Test Distance:5.000m [K=1.0000]
 Remarks: