

Spectrum Test Report

Sample : A19-10-E26-850-DIM
 Specification : 120V/10W/800IM
 Sample No. :
 Manufacturer : RAB Lighting Inc

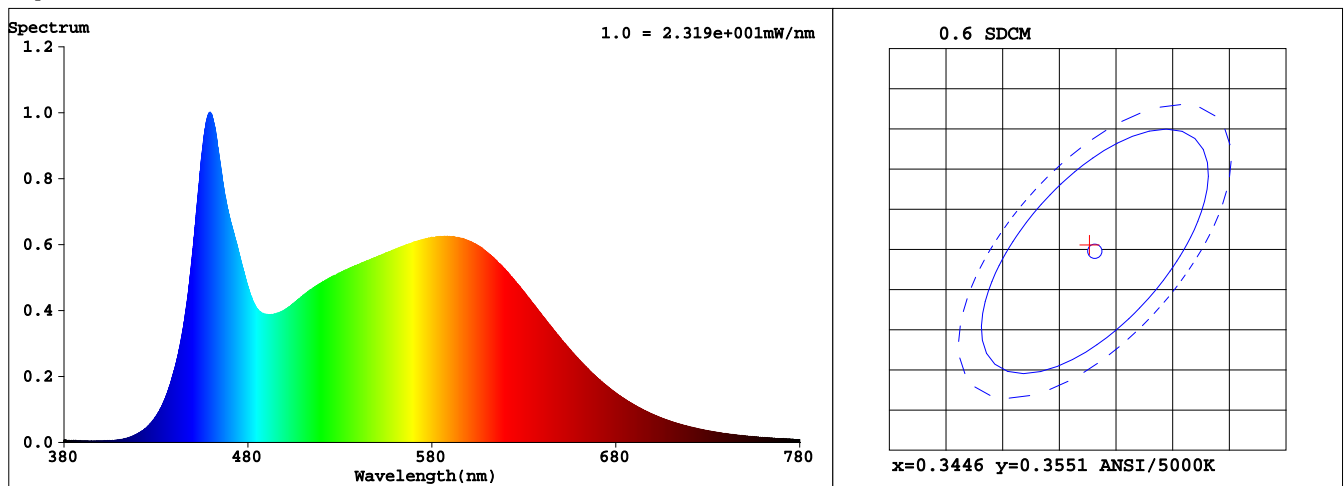
Date : 2017-12-14 02:36:51
 Sam. Status :
 Instrument : HaasSuite(EVERFINE)
 Test by :
 Assessor : damin

Test Condition

Temperature : 24.7Deg
 WL Range : 380nm-780nm
 Test Mode : Fast Test

RH : 50%
 IP : 50136 (77%)
 T : 133 ms
 Delicacy : High

Spectrum



Spectral Distribution

CIE1931 Chromaticity Diagram

Colorimetric Parameters

Chromaticity Coordinate: $x = 0.3442$ $y = 0.3557$ / $u' = 0.2092$ $v' = 0.4865$ ($duv=2.43e-03$)

CCT= 5048K Prcp WL: $L_d=569.7nm$ Purity=10.0%

Peak WL: $L_p=459nm$ FWHM: $=30.1nm$ Ratio:R=16.2% G=77.8% B=6.0%

Render Index: $R_a = 85.9$

R1 =87 R2 =97 R3 =93 R4 =80 R5 =86 R6 =93 R7 =84

R8 =69 R9 =24 R10=91 R11=80 R12=68 R13=91 R14=97 R15=81

LEVEL:OUT WHITE:ANSI_5000K

Photometric & Radiometric Parameters

Flux = 936.85 lm Eff. : 95.16 lm/W $F_e = 3.0051 W$

Flux of emitted photons($\mu mol/s$):13.869 Flu. and blue light ratio:2.857 Fluorescent eff.:167.5

Electrical parameters

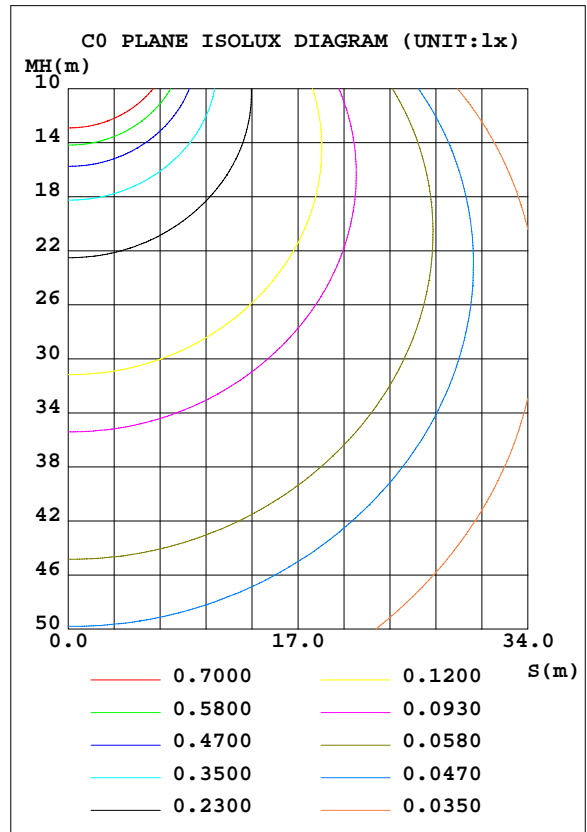
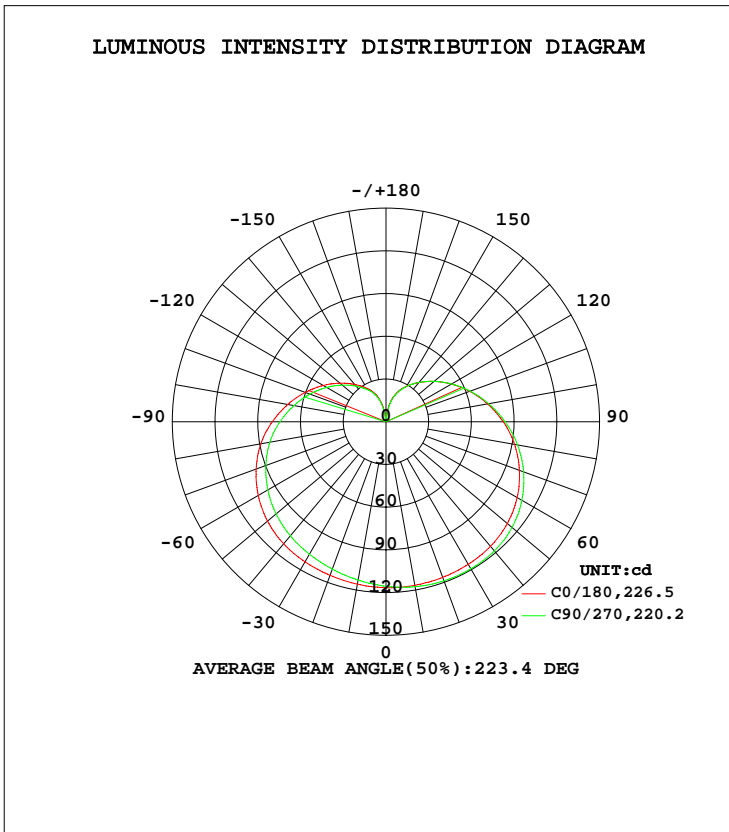
$V = 120.0 V$ $I = 0.1108 A$ $P = 9.845 W$ PF = 0.7407

EVERFINE GONIOPHOTOMETERS SYSTEM TEST REPORT

LUMINAIRE PHOTOMETRIC TEST REPORT

Test:U:119.9V I:0.1103A P:9.837W PF:0.7436 Freq:59.98Hz Lamp Flux:955.58x1 lm		
NAME: A19-10-E26-850-DIM	TYPE:LED	WEIGHT:
SPEC.:120V/10W/800LM	DIM.:	SERIAL No.:A1720249A001
MFR.: RAB LIGHTING INC	SUR.:	Shielding Angle:

DATA OF LAMP		PHOTOMETRIC DATA Eff: 97.15 lm/W			
MODEL		I _{max} (cd)	119.3	S/MH(C0/180)	1.49
NOMINAL POWER(W)	10	LOR(%)	100.0	S/MH(C90/270)	1.42
RATED VOLTAGE(V)	120	TOTAL FLUX(lm)	955.58	η UP, DN(C0-180)	17.1, 34.7
NOMINAL FLUX(lm)	955.58	CIE CLASS	SEMI-D.	η UP, DN(C180-360)	15.9, 32.3
LAMPS INSIDE	1	η up(%)	33.0	CIBSE SHR NOM	1.75
TEST VOLTAGE(V)	120	η down(%)	67.0	CIBSE SHR MAX	1.75



C Range: 0 - 360DEG
 C Interval: 90.0DEG
 Test Speed: HIGH
 Temperature:25.3DEG
 Operators:邹娇能
 Test Date:2017-12-13

γ Range: 0 - 180DEG
 γ Interval: 1.0DEG
 Test System:EVERFINE GO-SPEX500_V1 SYSTEM V2.0.363T
 Humidity:40%
 Test Distance:5.060m [K=1.0000]
 Remarks:

EVERFINE GONIOPHOTOMETERS SYSTEM TEST REPORT

ZONAL FLUX DIAGRAM

ZONAL FLUX DIAGRAM:

γ	C0	C90	C180	C270				γ	Φ zone	Φ total	%lum, lamp
10	116.6	117.6	115.8	112.9				0- 10	11.06	11.06	1.16,1.16
20	116.3	118.9	114.8	110.2				10- 20	32.71	43.77	4.58,4.58
30	115.5	119.2	113.7	107.5				20- 30	53.00	96.77	10.1,10.1
40	114.1	118.4	111.8	104.5				30- 40	71.10	167.9	17.6,17.6
50	111.3	115.5	108.6	100.7				40- 50	85.76	253.6	26.5,26.5
60	106.3	110.2	103.6	95.79				50- 60	95.64	349.3	36.6,36.6
70	99.70	102.8	96.99	89.77				60- 70	99.98	449.2	47,47
80	91.67	93.76	89.16	82.79				70- 80	98.83	548.1	57.4,57.4
90	82.37	83.67	79.84	74.42				80- 90	92.54	640.6	67,67
100	72.46	73.22	70.07	65.67				90-100	82.08	722.7	75.6,75.6
110	62.61	62.98	60.39	56.85				100-110	69.35	792.1	82.9,82.9
120	53.05	53.24	51.01	48.19				110-120	55.65	847.7	88.7,88.7
130	44.18	44.22	42.24	40.15				120-130	42.23	889.9	93.1,93.1
140	36.03	36.10	34.27	32.65				130-140	30.03	920.0	96.3,96.3
150	28.82	28.54	27.24	26.05				140-150	19.67	939.6	98.3,98.3
160	21.19	20.68	20.04	18.87				150-160	11.26	950.9	99.5,99.5
170	10.31	9.310	7.939	5.659				160-170	4.423	955.3	100,100
180	0.1748	0.1809	0.1825	0.1794				170-180	0.2724	955.6	100,100
DEG	LUMINOUS INTENSITY:cd								UNIT:lm		

Conical surface Flux(90deg): 209.19 lm

%lum = 21.9%
%lamp = 21.9%

Conical surface Flux(120deg): 349.27 lm

%lum = 36.6%
%lamp = 36.6%

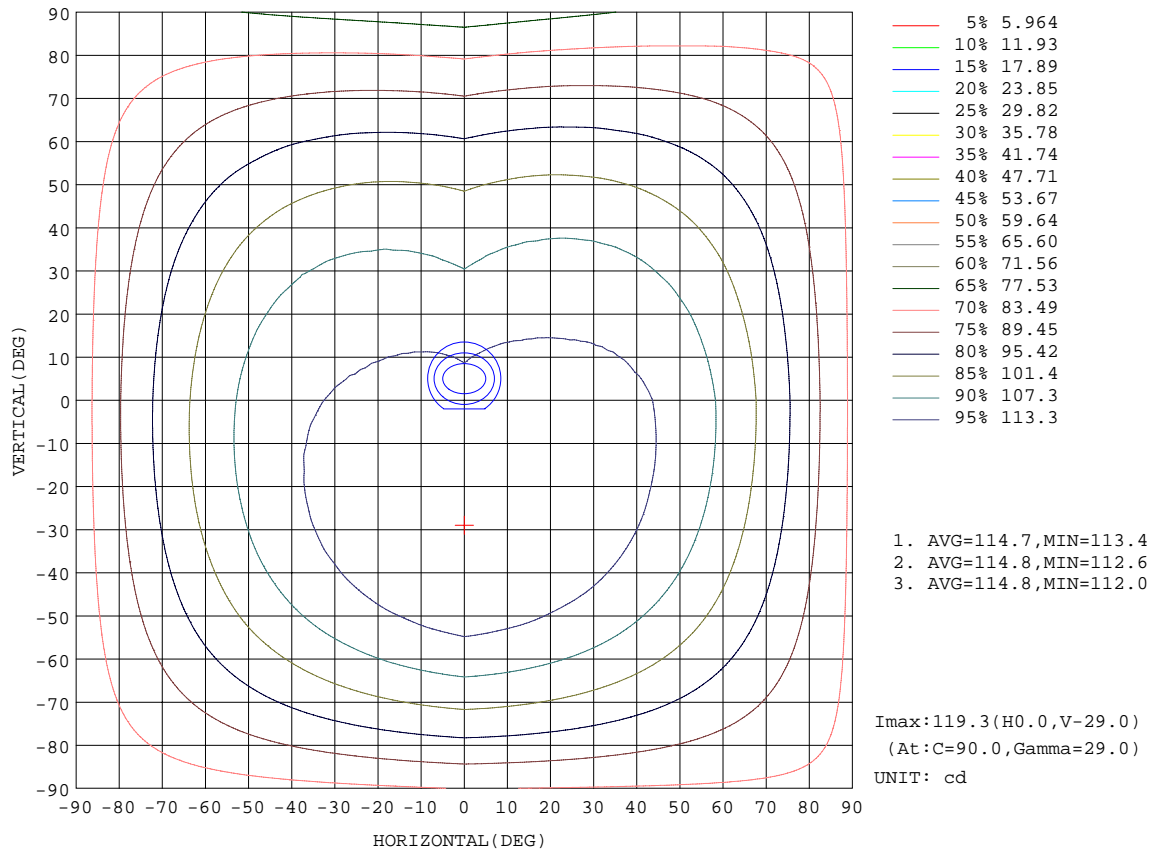
C Range: 0 - 360DEG
C Interval: 90.0DEG
Test Speed: HIGH
Temperature:25.3DEG
Operators:邹娇能
Test Date:2017-12-13

γ Range: 0 - 180DEG
γ Interval: 1.0DEG
Test System:EVERFINE GO-SPEX500_V1 SYSTEM V2.0.363T
Humidity:40%
Test Distance:5.060m [K=1.0000]
Remarks:

EVERFINE GONIOPHOTOMETERS SYSTEM TEST REPORT

ISOCANDELA DIAGRAM

Test:U:119.9V I:0.1103A P:9.837W PF:0.7436 Freq:59.98Hz Lamp Flux:955.58x1 lm		
NAME: A19-10-E26-850-DIM	TYPE:LED	WEIGHT:
SPEC.:120V/10W/8001M	DIM.:	SERIAL No.:A1720249A001
MFR.: RAB LIGHTING INC	SUR.:	Shielding Angle:



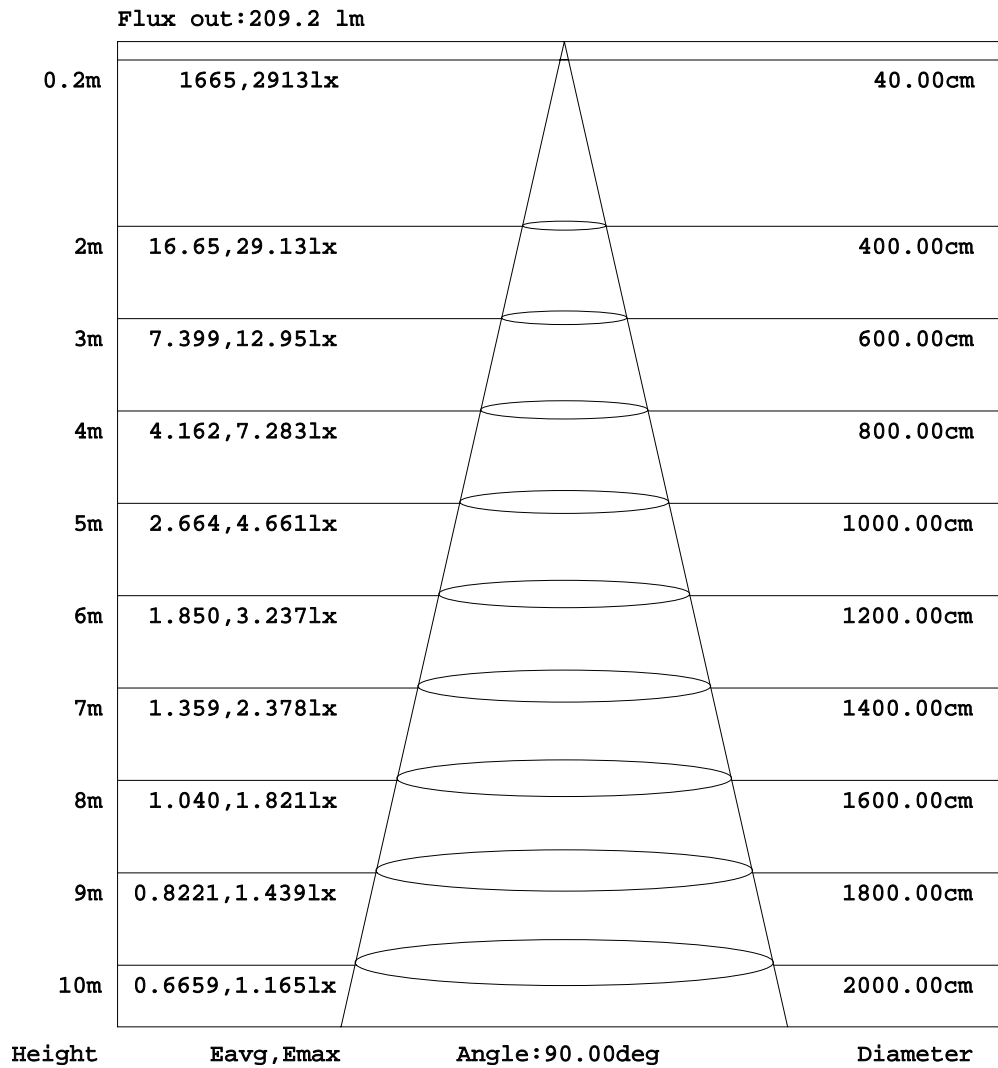
C Range: 0 - 360DEG
 C Interval: 90.0DEG
 Test Speed: HIGH
 Temperature:25.3DEG
 Operators:邹娇能
 Test Date:2017-12-13

γ Range: 0 - 180DEG
 γ Interval: 1.0DEG
 Test System:EVERFINE GO-SPEX500_V1 SYSTEM V2.0.363T
 Humidity:40%
 Test Distance:5.060m [K=1.0000]
 Remarks:

EVERFINE GONIOPHOTOMETERS SYSTEM TEST REPORT

AAI Figure

Test:U:119.9V I:0.1103A P:9.837W PF:0.7436 Freq:59.98Hz Lamp Flux:955.58x1 lm		
NAME: A19-10-E26-850-DIM	TYPE:LED	WEIGHT:
SPEC.:120V/10W/800LM	DIM.:	SERIAL No.:A1720249A001
MFR.: RAB LIGHTING INC	SUR.:	Shielding Angle:



Note:The Curves indicate the illuminated area and the average illumination when the luminaire is at different distance.

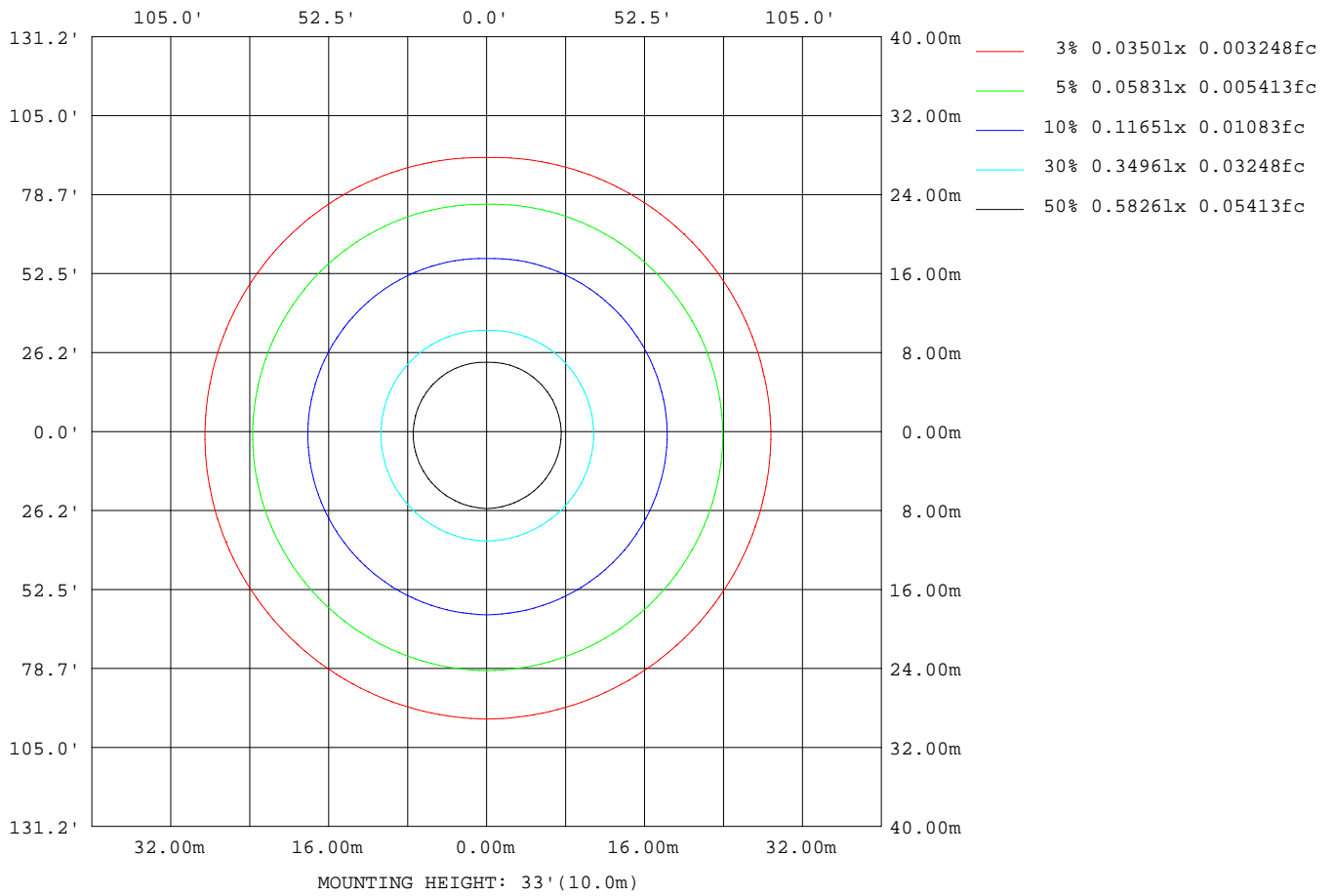
C Range: 0 - 360DEG
 C Interval: 90.0DEG
 Test Speed: HIGH
 Temperature:25.3DEG
 Operators:邹娇能
 Test Date:2017-12-13

γ Range: 0 - 180DEG
 γ Interval: 1.0DEG
 Test System:EVERFINE GO-SPEX500_V1 SYSTEM V2.0.363T
 Humidity:40%
 Test Distance:5.060m [K=1.0000]
 Remarks:

EVERFINE GONIOPHOTOMETERS SYSTEM TEST REPORT

ISOLUX DIAGRAM

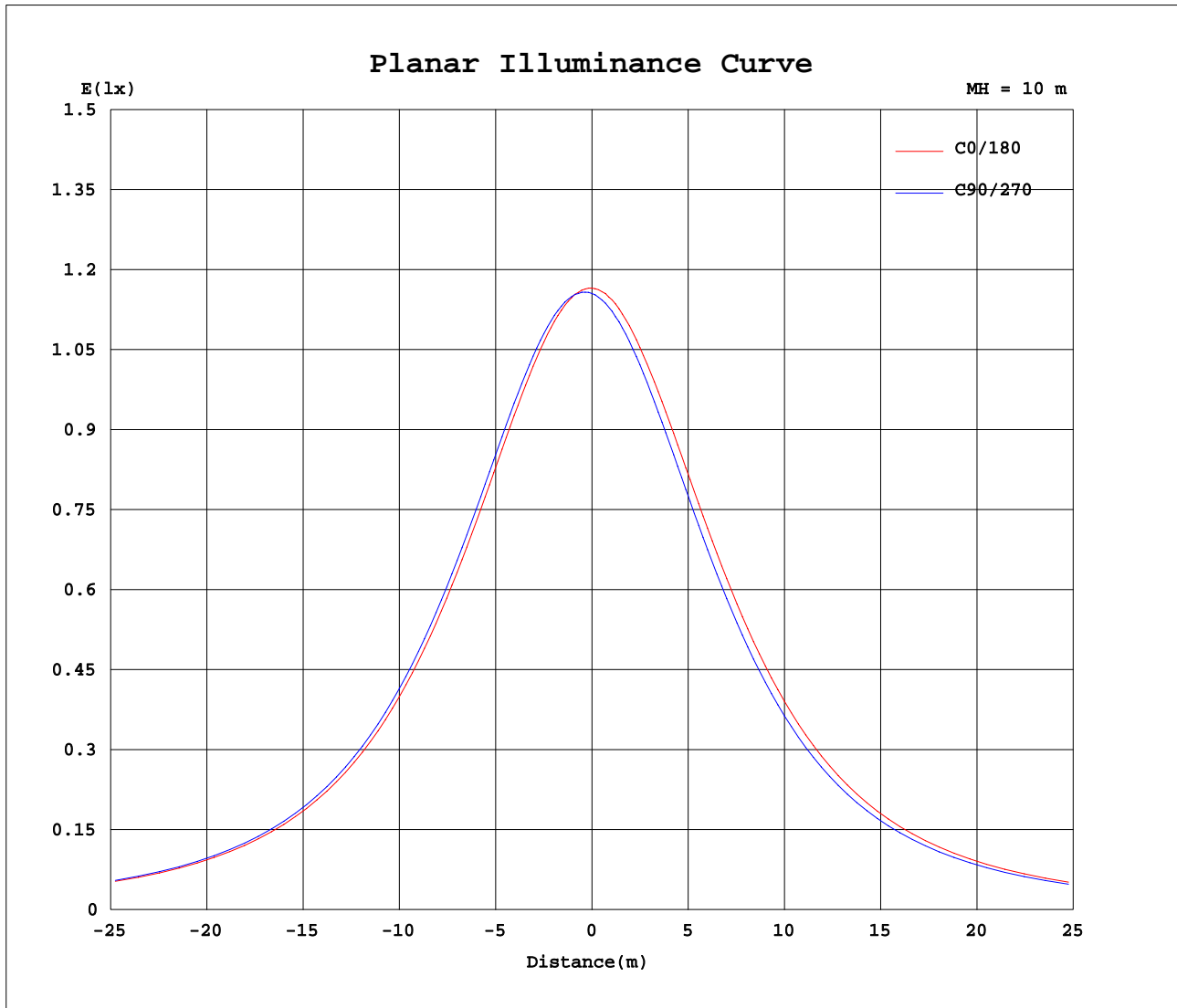
Test:U:119.9V I:0.1103A P:9.837W PF:0.7436 Freq:59.98Hz Lamp Flux:955.58x1 lm		
NAME: A19-10-E26-850-DIM	TYPE:LED	WEIGHT:
SPEC.:120V/10W/8001M	DIM.:	SERIAL No.:A1720249A001
MFR.: RAB LIGHTING INC	SUR.:	Shielding Angle:



C Range: 0 - 360DEG
 C Interval: 90.0DEG
 Test Speed: HIGH
 Temperature:25.3DEG
 Operators:邹娇能
 Test Date:2017-12-13

γ Range: 0 - 180DEG
 γ Interval: 1.0DEG
 Test System:EVERFINE GO-SPEX500_V1 SYSTEM V2.0.363T
 Humidity:40%
 Test Distance:5.060m [K=1.0000]
 Remarks:

Planar Illuminance Curve



C Range: 0 - 360DEG
 C Interval: 90.0DEG
 Test Speed: HIGH
 Temperature: 25.3DEG
 Operators: 邹娇能
 Test Date: 2017-12-13

γ Range: 0 - 180DEG
 γ Interval: 1.0DEG
 Test System: EVERFINE GO-SPEX500_V1 SYSTEM V2.0.363T
 Humidity: 40%
 Test Distance: 5.060m [K=1.0000]
 Remarks:

EVERFINE GONIOPHOTOMETERS SYSTEM TEST REPORT

LUMINOUS DISTRIBUTION INTENSITY DATA

Test:U:119.9V I:0.1103A P:9.837W PF:0.7436 Freq:59.98Hz Lamp Flux:955.58x1 lm		
NAME: A19-10-E26-850-DIM	TYPE:LED	WEIGHT:
SPEC.:120V/10W/800LM	DIM.:	SERIAL No.:A1720249A001
MFR.: RAB LIGHTING INC	SUR.:	Shielding Angle:

Table--1

UNIT: cd

C(DEG) γ (DEG)	0	90	180	270															
0	117	116	117	116															
5	117	117	116	114															
10	117	118	116	113															
15	117	118	115	112															
20	116	119	115	110															
25	116	119	114	109															
30	116	119	114	107															
35	115	119	113	106															
40	114	118	112	105															
45	113	117	110	103															
50	111	116	109	101															
55	109	113	106	98.4															
60	106	110	104	95.8															
65	103	107	101	92.9															
70	99.7	103	97.0	89.8															
75	95.8	98.4	93.3	86.4															
80	91.7	93.8	89.2	82.8															
85	87.1	88.8	84.7	78.8															
90	82.4	83.7	79.8	74.4															
95	77.5	78.4	75.0	70.0															
100	72.5	73.2	70.1	65.7															
105	67.5	68.1	65.2	61.3															
110	62.6	63.0	60.4	56.9															
115	57.7	58.0	55.6	52.5															
120	53.0	53.2	51.0	48.2															
125	48.5	48.6	46.5	44.2															
130	44.2	44.2	42.2	40.1															
135	40.0	40.0	38.1	36.3															
140	36.0	36.1	34.3	32.7															
145	32.3	32.3	30.6	29.2															
150	28.8	28.5	27.2	26.0															
155	25.3	24.7	23.8	22.8															
160	21.2	20.7	20.0	18.9															
165	16.4	15.8	15.2	13.8															
170	10.3	9.31	7.94	5.66															
175	0.19	0.18	0.15	0.15															
180	0.17	0.18	0.18	0.18															

C Range: 0 - 360DEG
 C Interval: 90.0DEG
 Test Speed: HIGH
 Temperature:25.3DEG
 Operators:邹娇能
 Test Date:2017-12-13

γ Range: 0 - 180DEG
 γ Interval: 1.0DEG
 Test System:EVERFINE GO-SPEX500_V1 SYSTEM V2.0.363T
 Humidity:40%
 Test Distance:5.060m [K=1.0000]
 Remarks: