

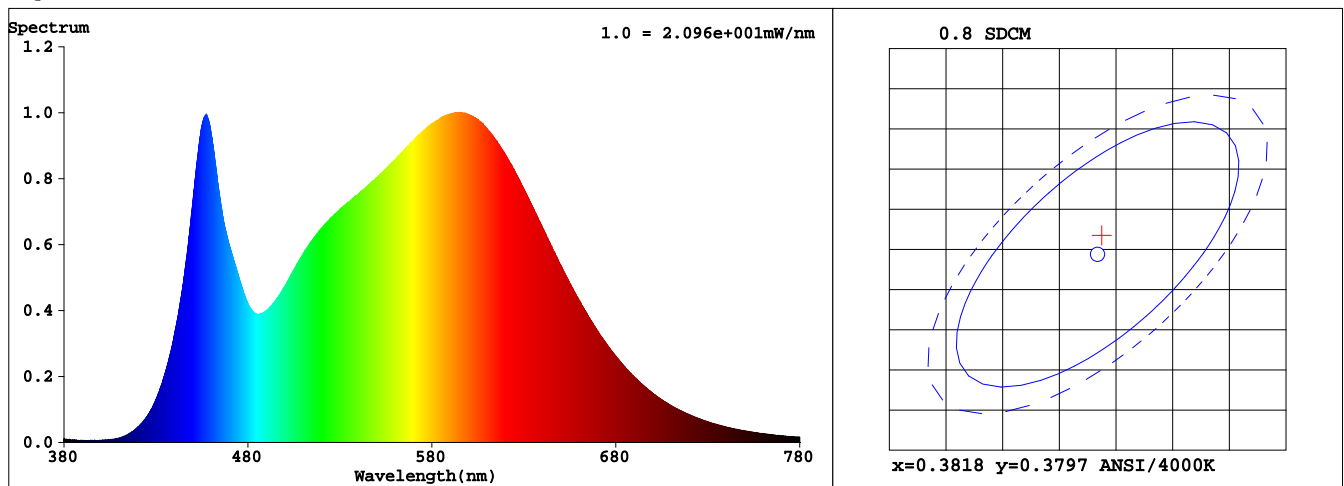
Spectrum Test Report

Sample	:	Date	: 2019-05-04 11:20:41
Specification	: A19-13-E26-840-DIM	Sam. Status	:
Sample No.	: A1906159A001	Instrument	: HaasSuite(EVERFINE)
Manufacturer	: RAB LIGHTING INC	Test by	: 戴碧霞
		Assessor	: damin

Test Condition

Temperature	: 25.9Deg	RH	: 42%
WL Range	: 380nm-780nm	IP	: 48621 (74%)
Test Mode	: Fast Test	T	: 100 ms
		Delicacy	: High

Spectrum



Spectral Distribution

CIE1931 Chromaticity Diagram

Colorimetric Parameters

Chromaticity Coordinate: $x = 0.3821$ $y = 0.3816$ / $u' = 0.2243$ $v' = 0.5039$ ($duv=1.76e-03$)

CCT= 3991K Prcp WL: $L_d=578.2nm$ Purity=29.2%

Peak WL: $L_p=595nm$ FWHM: =150.5nm Ratio:R=18.4% G=77.5% B=4.1%

Render Index: $R_a = 84.1$

R1 =83 R2 =92 R3 =96 R4 =80 R5 =82 R6 =89 R7 =86

R8 =65 R9 =14 R10=80 R11=79 R12=64 R13=86 R14=98 R15=77

LEVEL:OUT WHITE:ANSI_4000K

Photometric & Radiometric Parameters

Flux = 1214.4 lm Eff. : 91.77 lm/W $F_e = 3.7349 W$

Flux of emitted photons($\mu mol/s$):17.619 Flu. and blue light ratio:4.486 Fluorescent eff.:176.5

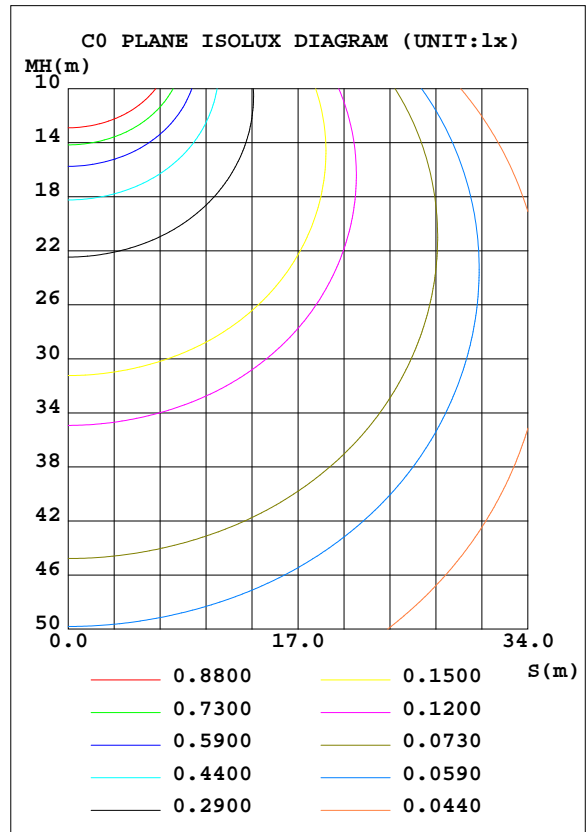
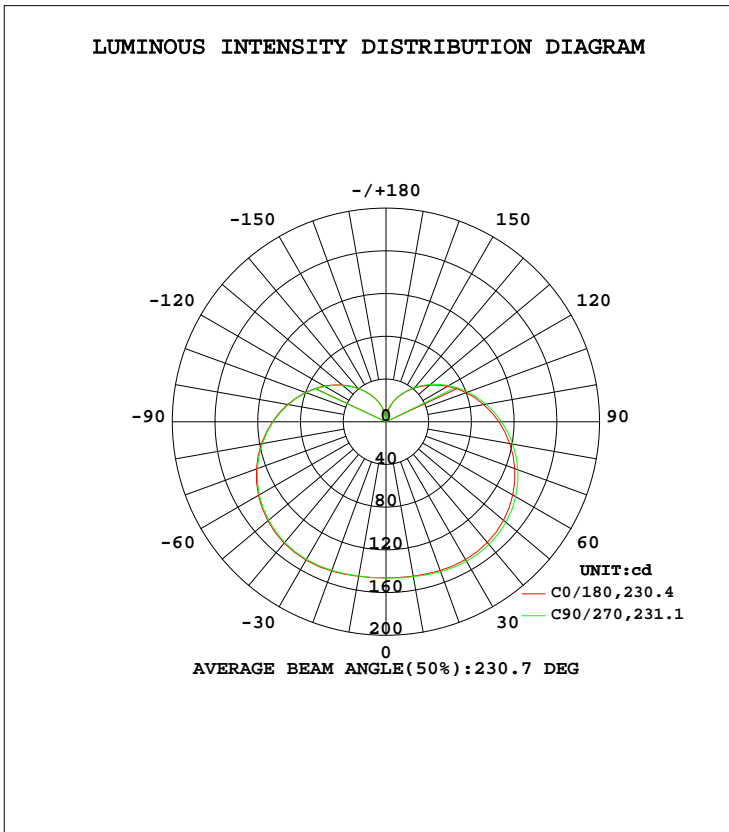
Electrical parameters

$V = 120.0 V$ $I = 0.1443 A$ $P = 13.23 W$ PF = 0.7645

LUMINAIRE PHOTOMETRIC TEST REPORT

NAME: A19-13-E26-840-DIM	TYPE:LED	WEIGHT:
SPEC.:120V/13W/1100LM	DIM.:	SERIAL No.:A1906159A001
MFR.: RAB LIGHTING INC	SUR.:	Shielding Angle:

DATA OF LAMP		PHOTOMETRIC DATA Eff: 94.53 lm/W			
MODEL		I _{max} (cd)	150.9	S/MH(C0/180)	1.56
NOMINAL POWER(W)	13	LOR(%)	100.0	S/MH(C90/270)	1.55
RATED VOLTAGE(V)	120	TOTAL FLUX(lm)	1250.3	η UP, DN(C0-180)	16.4, 34.1
NOMINAL FLUX(lm)	1250.35	CIE CLASS	SEMI-D.	η UP, DN(C180-360)	16.0, 33.6
LAMPS INSIDE	1	η up(%)	32.3	CIBSE SHR NOM	1.75
TEST VOLTAGE(V)	120	η down(%)	67.7	CIBSE SHR MAX	1.75



C Range: 0 - 360DEG
 C Interval: 22.5DEG
 Test Speed: HIGH
 Temperature:25.3DEG
 Operators:陈庆玲
 Test Date:2019-05-03

γ Range: 0 - 180DEG
 γ Interval: 5.0DEG
 Test System:EVERFINE GO-SPEX500_V1 SYSTEM V2.0.363T
 Humidity:40%
 Test Distance:5.000m [K=1.0000]
 Remarks:

ZONAL FLUX DIAGRAM

ZONAL FLUX DIAGRAM:

γ	C0	C45	C90	C135	C180	C225	C270	C315	γ	Φ zone	Φ total	%lum, lamp
10	146.8	147.0	147.3	147.4	147.1	146.9	146.8	146.8	0- 10	14.00	14.00	1.12,1.12
20	148.3	148.8	149.4	149.3	148.9	148.5	148.2	148.0	10- 20	41.92	55.93	4.47,4.47
30	149.0	150.0	150.9	150.6	149.7	149.4	148.9	148.5	20- 30	69.10	125.0	10,10
40	147.6	149.0	150.1	149.7	148.4	148.0	147.5	147.0	30- 40	93.72	218.7	17.5,17.5
50	143.7	145.4	146.6	146.0	144.5	144.0	143.5	142.9	40- 50	113.6	332.3	26.6,26.6
60	137.1	138.9	140.3	139.6	137.9	137.4	136.9	136.3	50- 60	126.9	459.2	36.7,36.7
70	128.3	130.2	131.4	130.7	129.1	128.5	128.2	127.5	60- 70	132.8	592.0	47.3,47.3
80	117.7	119.4	120.5	119.9	118.4	117.8	117.6	116.9	70- 80	131.1	723.1	57.8,57.8
90	105.8	107.3	108.2	107.7	106.3	105.9	105.7	105.0	80- 90	122.8	846.0	67.7,67.7
100	93.07	94.31	95.12	94.79	93.58	93.18	93.03	92.47	90-100	109.3	955.2	76.4,76.4
110	79.91	80.89	81.51	81.38	80.23	79.88	79.73	79.24	100-110	92.13	1047	83.8,83.8
120	66.65	67.45	67.94	67.86	66.87	66.49	66.35	65.96	110-120	73.18	1121	89.6,89.6
130	53.59	54.26	54.68	54.64	53.66	53.27	53.14	52.88	120-130	54.22	1175	94,94
140	41.30	41.88	42.18	42.13	41.08	40.68	40.56	40.44	130-140	36.87	1212	96.9,96.9
150	30.02	30.53	30.74	30.65	29.61	29.22	29.11	29.10	140-150	22.41	1234	98.7,98.7
160	20.24	20.53	20.64	20.09	19.44	19.04	19.01	19.14	150-160	11.58	1246	99.6,99.6
170	10.94	10.46	8.473	9.603	9.013	8.482	8.586	9.295	160-170	4.284	1250	100,100
180	1.407	1.407	1.401	1.403	1.409	1.409	1.400	1.412	170-180	0.4257	1250	100,100
DEG	LUMINOUS INTENSITY:cd									UNIT:lm		

Conical surface Flux(90deg): 273.43 lm

%lum = 21.9%
%lamp = 21.9%

Conical surface Flux(120deg): 459.23 lm

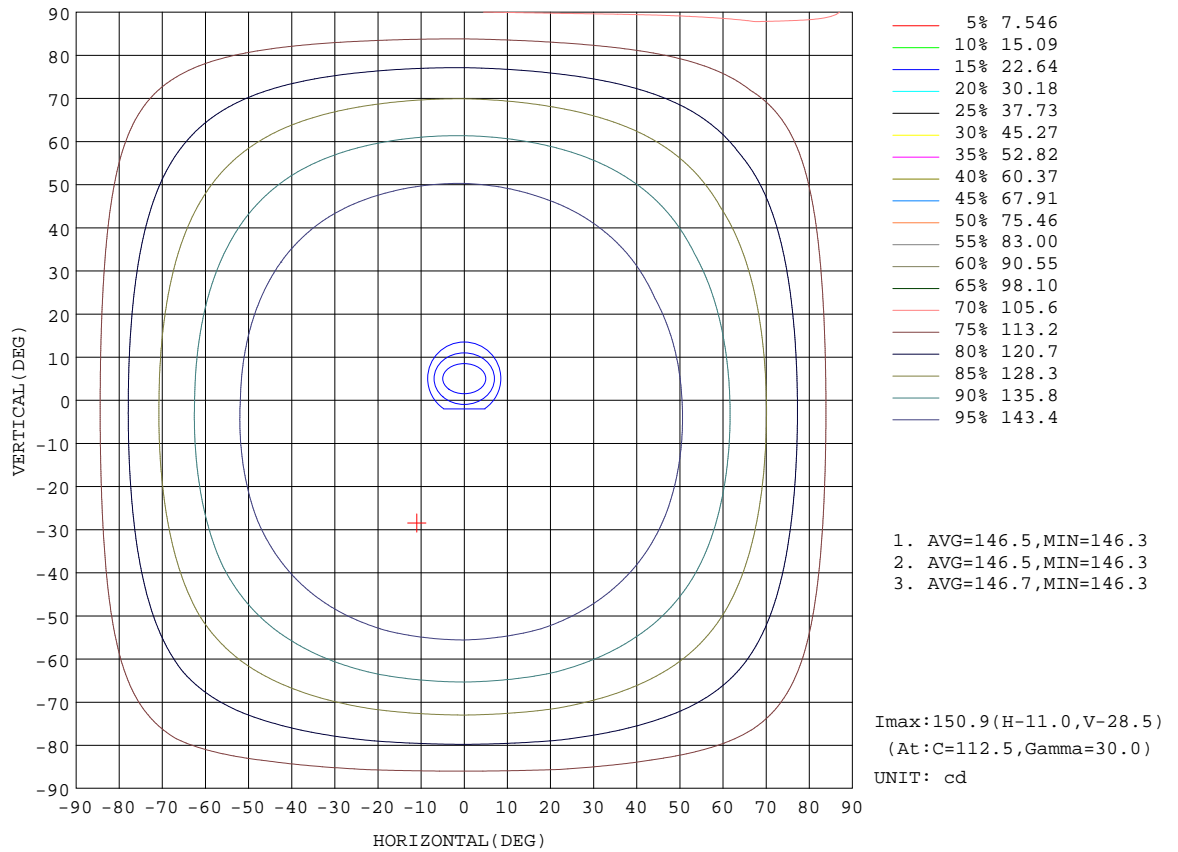
%lum = 36.7%
%lamp = 36.7%

C Range: 0 - 360DEG
C Interval: 22.5DEG
Test Speed: HIGH
Temperature:25.3DEG
Operators:陈庆玲
Test Date:2019-05-03

γ Range: 0 - 180DEG
γ Interval: 5.0DEG
Test System:EVERFINE GO-SPEX500_V1 SYSTEM V2.0.363T
Humidity:40%
Test Distance:5.000m [K=1.0000]
Remarks:

ISOCANDELA DIAGRAM

NAME: A19-13-E26-840-DIM	TYPE:LED	WEIGHT:
SPEC.:120V/13W/1100LM	DIM.:	SERIAL No.:A1906159A001
MFR.: RAB LIGHTING INC	SUR.:	Shielding Angle:

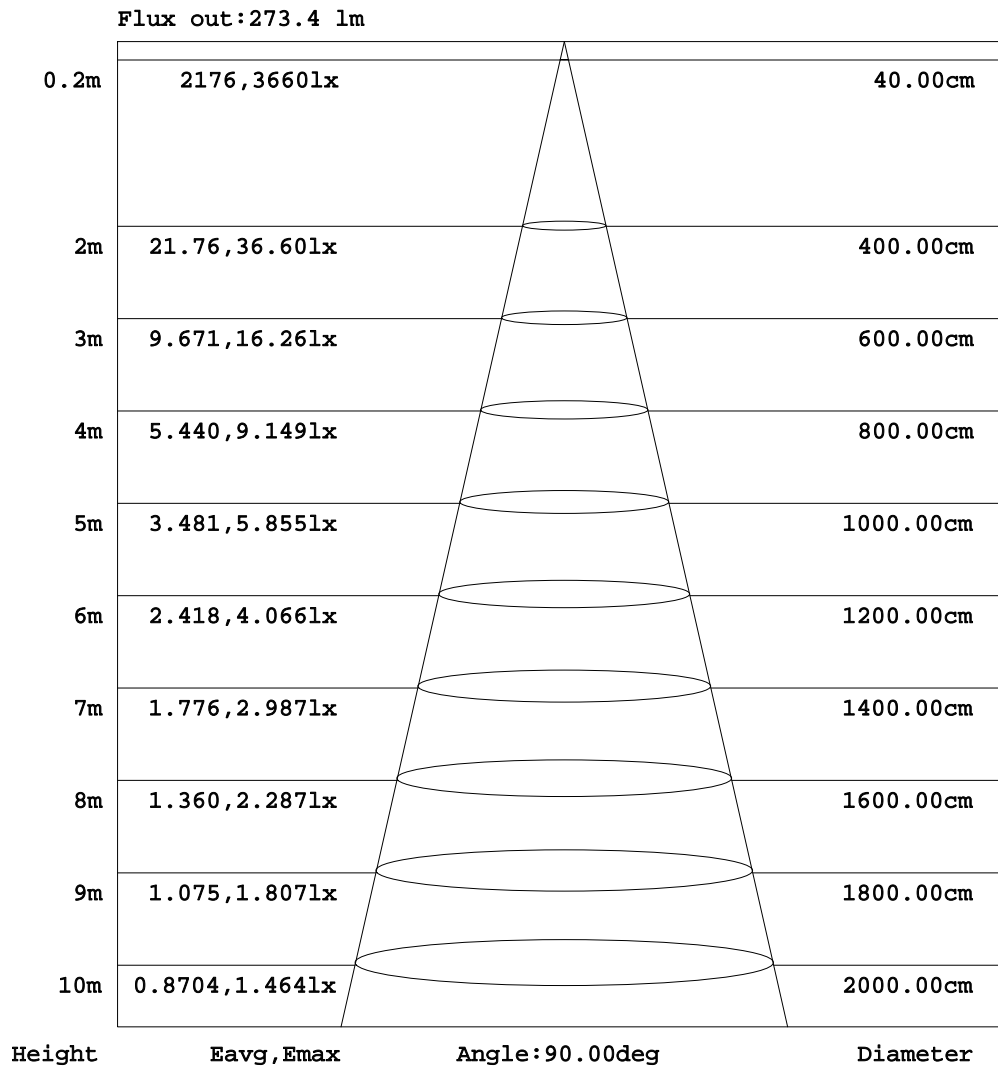


C Range: 0 - 360DEG
 C Interval: 22.5DEG
 Test Speed: HIGH
 Temperature:25.3DEG
 Operators:陈庆玲
 Test Date:2019-05-03

γ Range: 0 - 180DEG
 γ Interval: 5.0DEG
 Test System:EVERFINE GO-SPEX500_V1 SYSTEM V2.0.363T
 Humidity:40%
 Test Distance:5.000m [K=1.0000]
 Remarks:

AAI Figure

NAME: A19-13-E26-840-DIM	TYPE:LED	WEIGHT:
SPEC.:120V/13W/1100LM	DIM.:	SERIAL No.:A1906159A001
MFR.: RAB LIGHTING INC	SUR.:	Shielding Angle:



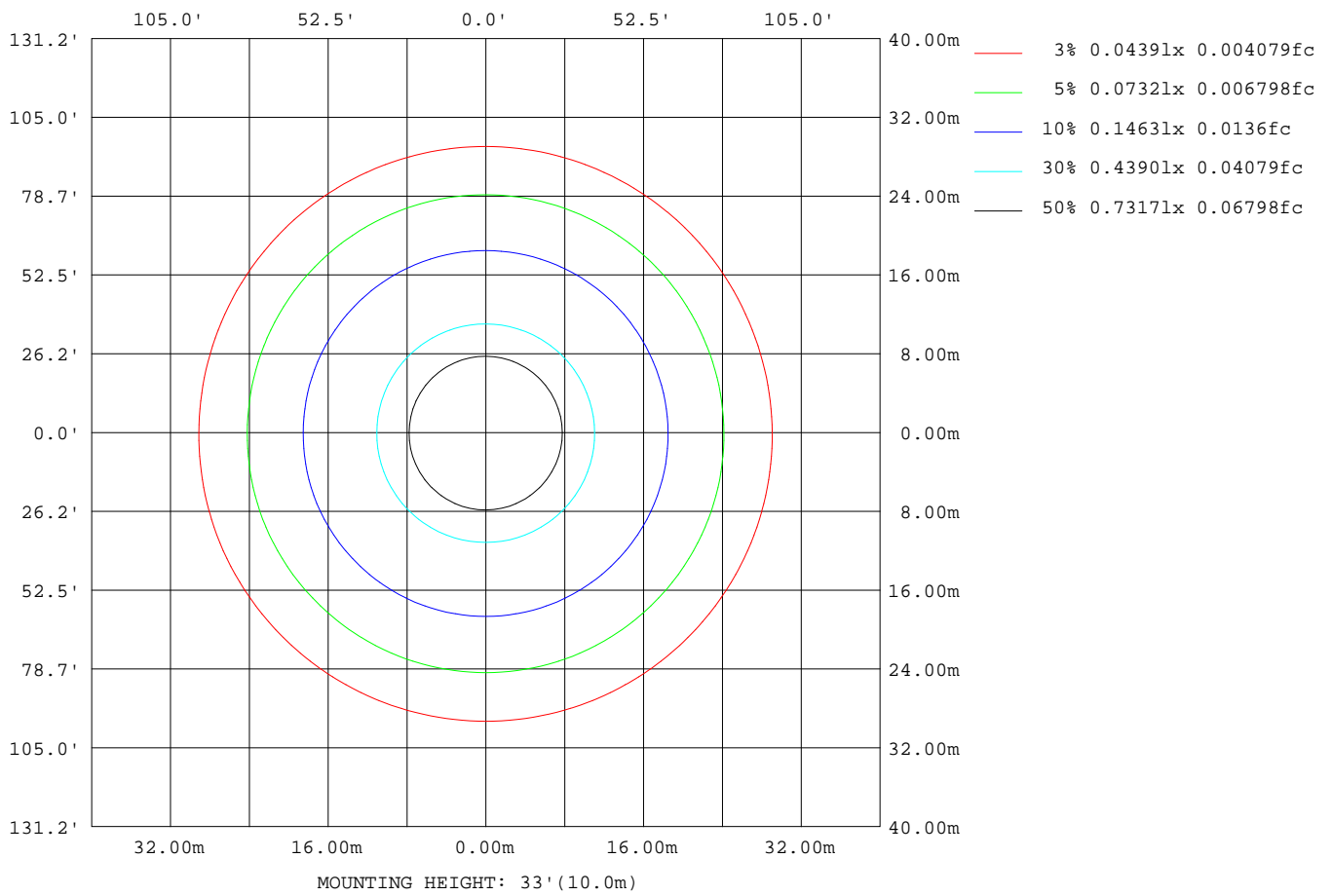
Note:The Curves indicate the illuminated area and the average illumination when the luminaire is at different distance.

C Range: 0 - 360DEG
 C Interval: 22.5DEG
 Test Speed: HIGH
 Temperature:25.3DEG
 Operators:陈庆玲
 Test Date:2019-05-03

γ Range: 0 - 180DEG
 γ Interval: 5.0DEG
 Test System:EVERFINE GO-SPEX500_V1 SYSTEM V2.0.363T
 Humidity:40%
 Test Distance:5.000m [K=1.0000]
 Remarks:

ISOLUX DIAGRAM

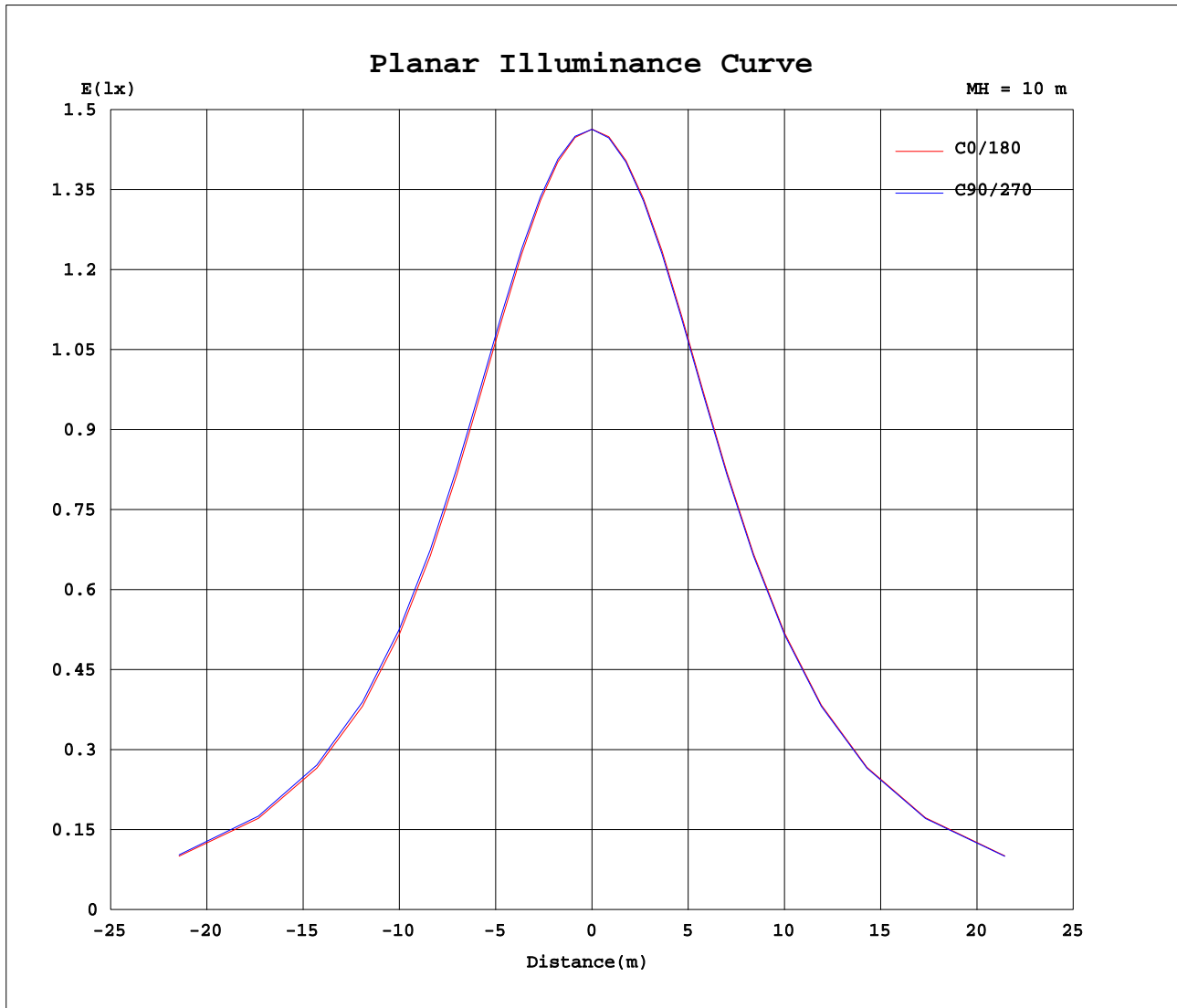
NAME: A19-13-E26-840-DIM	TYPE:LED	WEIGHT:
SPEC.:120V/13W/1100LM	DIM.:	SERIAL No.:A1906159A001
MFR.: RAB LIGHTING INC	SUR.:	Shielding Angle:



C Range: 0 - 360DEG
 C Interval: 22.5DEG
 Test Speed: HIGH
 Temperature:25.3DEG
 Operators:陈庆玲
 Test Date:2019-05-03

γ Range: 0 - 180DEG
 γ Interval: 5.0DEG
 Test System:EVERFINE GO-SPEX500_V1 SYSTEM V2.0.363T
 Humidity:40%
 Test Distance:5.000m [K=1.0000]
 Remarks:

Planar Illuminance Curve



C Range: 0 - 360DEG
 C Interval: 22.5DEG
 Test Speed: HIGH
 Temperature: 25.3DEG
 Operators: 陈庆玲
 Test Date: 2019-05-03

γ Range: 0 - 180DEG
 γ Interval: 5.0DEG
 Test System: EVERFINE GO-SPEX500_V1 SYSTEM V2.0.363T
 Humidity: 40%
 Test Distance: 5.000m [K=1.0000]
 Remarks:

LUMINOUS DISTRIBUTION INTENSITY DATA

NAME: A19-13-E26-840-DIM	TYPE:LED	WEIGHT:
SPEC.:120V/13W/1100LM	DIM.:	SERIAL No.:A1906159A001
MFR.: RAB LIGHTING INC	SUR.:	Shielding Angle:

Table--1

UNIT: cd

C(DEG)\ γ (DEG)	0	22.5	45	67.5	90	112.5	135	157.5	180	202.5	225	247.5	270	292.5	315	337.5			
0	146	146	146	146	146	146	146	146	146	146	146	146	146	146	146	146			
5	146	147	147	147	147	147	147	147	147	146	146	146	146	146	146	146			
10	147	147	147	147	147	147	147	147	147	147	147	147	147	147	147	147			
15	147	148	148	148	148	148	148	148	148	148	148	148	147	147	147	147			
20	148	148	149	149	149	149	149	149	149	149	148	148	148	148	148	148			
25	149	149	150	150	150	150	150	150	149	149	149	149	149	149	148	149			
30	149	149	150	151	151	151	151	150	150	150	149	149	149	149	149	149			
35	149	149	150	150	151	151	150	150	149	149	149	149	149	148	148	148			
40	148	148	149	150	150	150	150	149	148	148	148	148	148	147	147	147			
45	146	147	148	148	149	149	148	148	147	147	146	146	146	145	145	145			
50	144	145	145	146	147	147	146	145	144	144	144	144	144	143	143	143			
55	141	142	142	143	144	144	143	143	142	141	141	141	141	140	140	140			
60	137	138	139	140	140	140	140	139	138	138	137	137	137	137	136	136			
65	133	134	135	136	136	136	135	135	134	133	133	133	133	132	132	132			
70	128	129	130	131	131	131	131	130	129	129	129	128	128	128	127	127			
75	123	124	125	126	126	126	126	125	124	124	123	123	123	123	122	122			
80	118	119	119	120	121	120	120	120	118	118	118	118	118	117	117	116			
85	112	113	113	114	114	114	114	114	112	112	112	112	112	111	111	111			
90	106	107	107	108	108	108	108	108	106	106	106	106	106	105	105	105			
95	99.5	100	101	102	102	102	101	101	100	99.8	99.6	99.4	99.5	99.0	98.8	98.4			
100	93.1	93.9	94.3	95.0	95.1	95.1	94.8	94.8	93.6	93.3	93.2	92.9	93.0	92.6	92.5	92.0			
105	86.5	87.2	87.6	88.3	88.4	88.4	88.1	88.1	86.9	86.7	86.5	86.3	86.4	86.1	85.9	85.5			
110	79.9	80.6	80.9	81.5	81.5	81.6	81.4	81.5	80.2	80.0	79.9	79.6	79.7	79.4	79.2	78.8			
115	73.3	73.9	74.2	74.7	74.7	74.8	74.6	74.7	73.6	73.2	73.2	73.0	73.0	72.7	72.6	72.2			
120	66.6	67.2	67.4	68.0	67.9	68.1	67.9	68.0	66.9	66.5	66.5	66.2	66.4	66.0	66.0	65.6			
125	60.1	60.7	60.8	61.3	61.3	61.4	61.2	61.4	60.2	59.9	59.8	59.5	59.7	59.4	59.4	59.0			
130	53.6	54.2	54.3	54.8	54.7	54.9	54.6	54.8	53.7	53.3	53.3	53.0	53.1	52.8	52.9	52.6			
135	47.2	47.8	47.9	48.4	48.3	48.5	48.2	48.4	47.3	46.9	46.9	46.6	46.7	46.5	46.6	46.3			
140	41.3	41.7	41.9	42.2	42.2	42.3	42.1	42.2	41.1	40.8	40.7	40.5	40.6	40.4	40.4	40.3			
145	35.5	35.9	36.0	36.4	36.3	36.4	36.2	36.3	35.2	34.9	34.8	34.6	34.7	34.5	34.6	34.5			
150	30.0	30.4	30.5	30.8	30.7	30.8	30.7	30.7	29.6	29.3	29.2	29.0	29.1	29.0	29.1	29.0			
155	24.9	25.3	25.4	25.6	25.6	25.6	25.3	25.4	24.4	24.1	24.0	23.9	23.9	23.9	24.0	24.0			
160	20.2	20.6	20.5	20.6	20.6	20.8	20.1	20.5	19.4	19.0	19.0	18.9	19.0	19.0	19.1	19.2			
165	15.7	16.1	15.7	15.6	13.9	15.9	14.7	15.3	14.6	14.1	14.1	14.0	14.2	14.2	14.4	14.7			
170	10.9	11.3	10.5	10.3	8.47	7.00	9.60	9.84	9.01	8.45	8.48	8.44	8.59	8.95	9.29	9.66			
175	2.02	2.31	2.13	2.00	1.69	1.77	1.43	1.43	1.34	1.34	1.34	1.34	1.34	1.33	1.34	1.35			
180	1.41	1.42	1.41	1.41	1.40	1.40	1.40	1.41	1.41	1.41	1.41	1.41	1.41	1.40	1.40	1.42			

C Range: 0 - 360DEG
 C Interval: 22.5DEG
 Test Speed: HIGH
 Temperature:25.3DEG
 Operators:陈庆玲
 Test Date:2019-05-03

γ Range: 0 - 180DEG
 γ Interval: 5.0DEG
 Test System:EVERFINE GO-SPEX500_V1 SYSTEM V2.0.363T
 Humidity:40%
 Test Distance:5.000m [K=1.0000]
 Remarks: