

Spectrum Test Report

Sample : A19-13-E26-850-DIM
 Specification : 120V/13.5W/1100IM
 Sample No. :
 Manufacturer : RAB LIGHTING INC

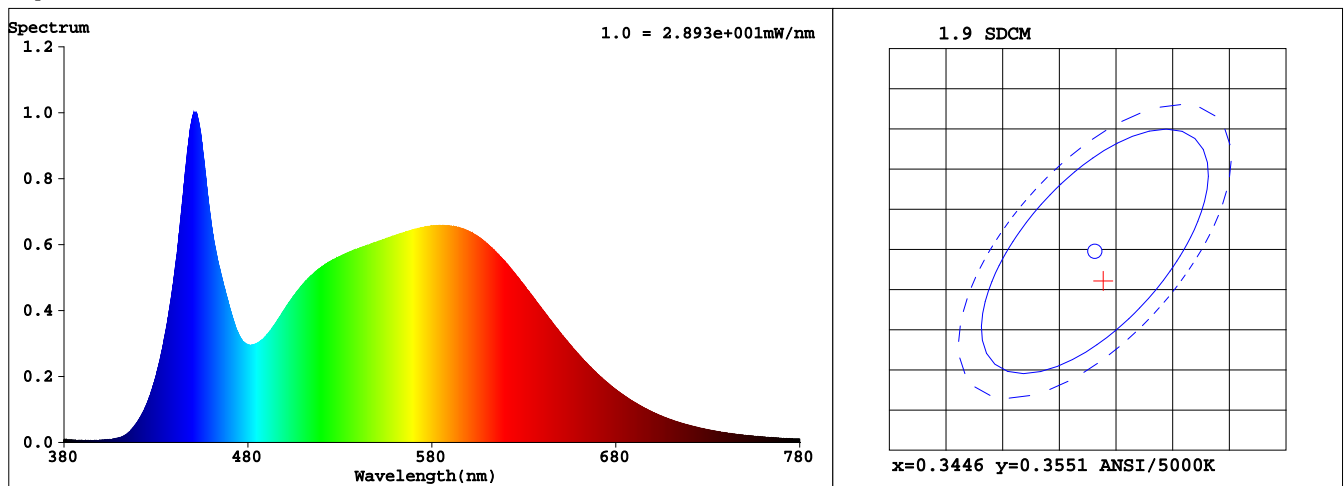
Date : 2017-12-13 17:02:13
 Sam. Status :
 Instrument : HaasSuite(EVERFINE)
 Test by :
 Assessor : damin

Test Condition

Temperature : 24.2Deg
 WL Range : 380nm-780nm
 Test Mode : Fast Test

RH : 50%
 IP : 49604 (76%)
 T : 100 ms
 Delicacy : High

Spectrum



Spectral Distribution

CIE1931 Chromaticity Diagram

Colorimetric Parameters

Chromaticity Coordinate: $x = 0.3452$ $y = 0.3521$ / $u' = 0.2113$ $v' = 0.4850$ ($duv=2.12e-04$)

CCT= 4996K Prcp WL: Ld=572.6nm Purity=9.2%

Peak WL: Lp=452nm FWHM: =25.9nm Ratio:R=16.1% G=79.2% B=4.7%

Render Index: Ra = 84.9

R1 =84 R2 =90 R3 =94 R4 =84 R5 =84 R6 =85 R7 =89

R8 =71 R9 =19 R10=75 R11=83 R12=62 R13=85 R14=97 R15=79

LEVEL:OUT WHITE:ANSI_5000K

Photometric & Radiometric Parameters

Flux = 1231.9 lm Eff. : 93.41 lm/W Fe = 3.9265 W

Flux of emitted photons(umol/s):18.099 Flu. and blue light ratio:3.362 Fluorescent eff.:176.6

Electrical parameters

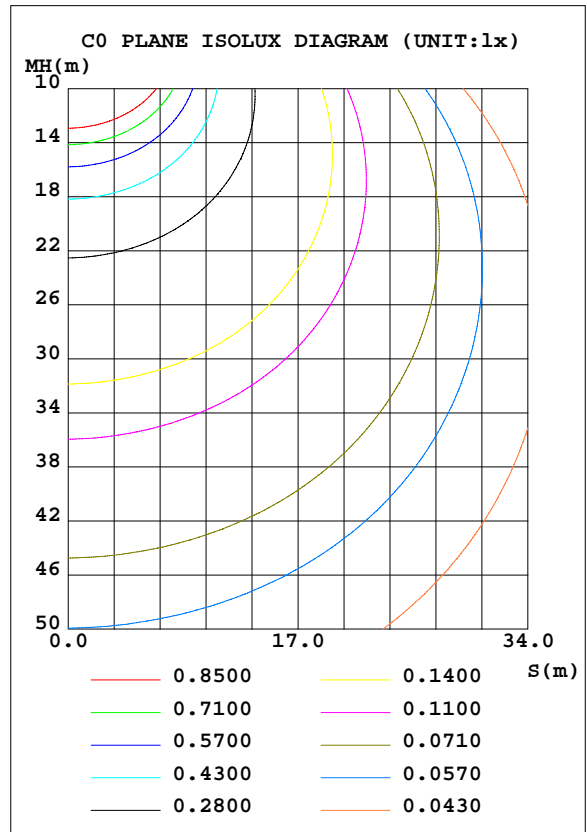
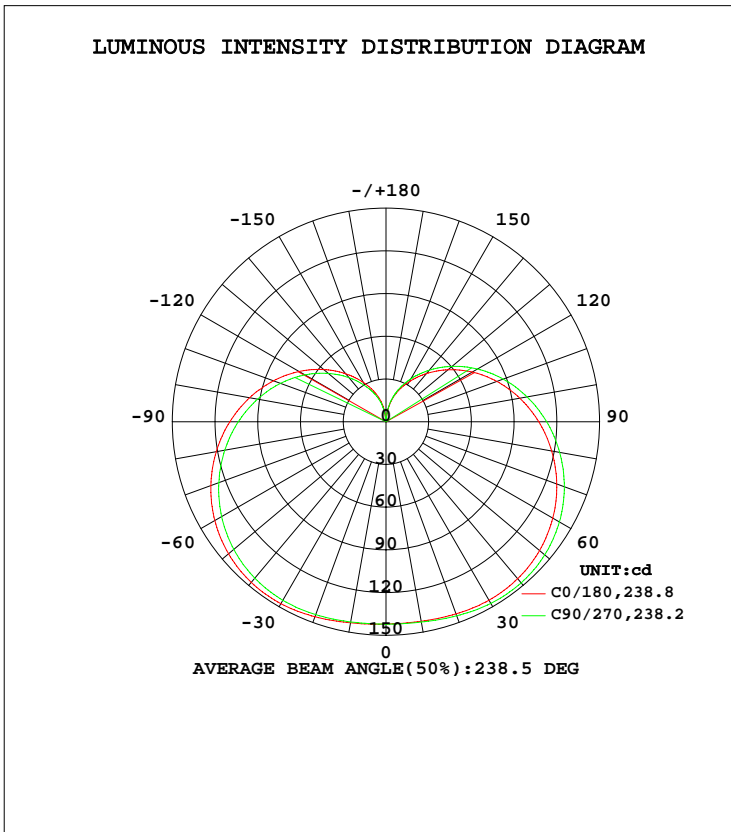
V = 119.9 V I = 0.1429 A P = 13.19 W PF = 0.7695

EVERFINE GONIOPHOTOMETERS SYSTEM TEST REPORT

LUMINAIRE PHOTOMETRIC TEST REPORT

Test:U:120.0V I:0.1442A P:13.35W PF:0.7714 Freq:59.98Hz Lamp Flux:1259.57x1 lm		
NAME: A19-13-E26-850-DIM	TYPE:LED	WEIGHT:
SPEC.:120V/13.5W/11001M	DIM.:	SERIAL No.:A1719909A001
MFR.: RAB LIGHTING INC	SUR.:	Shielding Angle:

DATA OF LAMP		PHOTOMETRIC DATA Eff: 94.38 lm/W			
MODEL		I _{max} (cd)	147.8	S/MH(C0/180)	1.59
NOMINAL POWER(W)	13.5	LOR(%)	100.0	S/MH(C90/270)	1.55
RATED VOLTAGE(V)	120	TOTAL FLUX(lm)	1259.6	η UP, DN(C0-180)	17.1, 33.5
NOMINAL FLUX(lm)	1259.57	CIE CLASS	SEMI-D.	η UP, DN(C180-360)	16.3, 33.1
LAMPS INSIDE	1	η up(%)	33.4	CIBSE SHR NOM	1.75
TEST VOLTAGE(V)	120	η down(%)	66.6	CIBSE SHR MAX	1.75



C Range: 0 - 360DEG
 C Interval: 90.0DEG
 Test Speed: HIGH
 Temperature:25.3DEG
 Operators:陈庆玲
 Test Date:2017-12-13

γ Range: 0 - 180DEG
 γ Interval: 1.0DEG
 Test System:EVERFINE GO-SPEX500_V1 SYSTEM V2.0.363T
 Humidity:40%
 Test Distance:5.060m [K=1.0000]
 Remarks:

EVERFINE GONIOPHOTOMETERS SYSTEM TEST REPORT

ZONAL FLUX DIAGRAM

ZONAL FLUX DIAGRAM:

γ	C0	C90	C180	C270				γ	Φ zone	Φ total	%lum, lamp
10	142.3	142.8	143.4	142.7				0- 10	13.60	13.60	1.08,1.08
20	143.6	145.0	145.7	144.1				10- 20	40.76	54.36	4.32,4.32
30	144.7	147.3	147.5	144.8				20- 30	67.35	121.7	9.66,9.66
40	143.9	147.8	147.3	143.4				30- 40	91.70	213.4	16.9,16.9
50	140.8	145.4	144.3	139.5				40- 50	111.7	325.1	25.8,25.8
60	135.3	140.6	138.8	133.3				50- 60	125.5	450.6	35.8,35.8
70	127.6	133.2	130.9	124.9				60- 70	132.2	582.8	46.3,46.3
80	118.1	123.9	121.0	114.9				70- 80	131.6	714.4	56.7,56.7
90	107.3	112.8	109.6	103.7				80- 90	124.4	838.8	66.6,66.6
100	95.45	100.6	97.28	91.59				90-100	111.7	950.5	75.5,75.5
110	82.92	87.66	84.14	78.85				100-110	95.13	1046	83,83
120	69.93	74.19	70.64	65.87				110-120	76.32	1122	89.1,89.1
130	56.88	60.58	57.14	52.84				120-130	57.08	1179	93.6,93.6
140	44.20	47.32	44.06	40.46				130-140	39.15	1218	96.7,96.7
150	32.41	34.81	31.97	29.05				140-150	23.98	1242	98.6,98.6
160	21.62	22.91	21.21	18.98				150-160	12.45	1255	99.6,99.6
170	9.924	10.50	9.431	7.730				160-170	4.594	1259	100,100
180	0.2515	0.2545	0.2515	0.2469				170-180	0.3745	1260	100,100
DEG	LUMINOUS INTENSITY:cd								UNIT:lm		

Conical surface Flux(90deg): 267.11 lm

%lum = 21.2%
%lamp = 21.2%

Conical surface Flux(120deg): 450.58 lm

%lum = 35.8%
%lamp = 35.8%

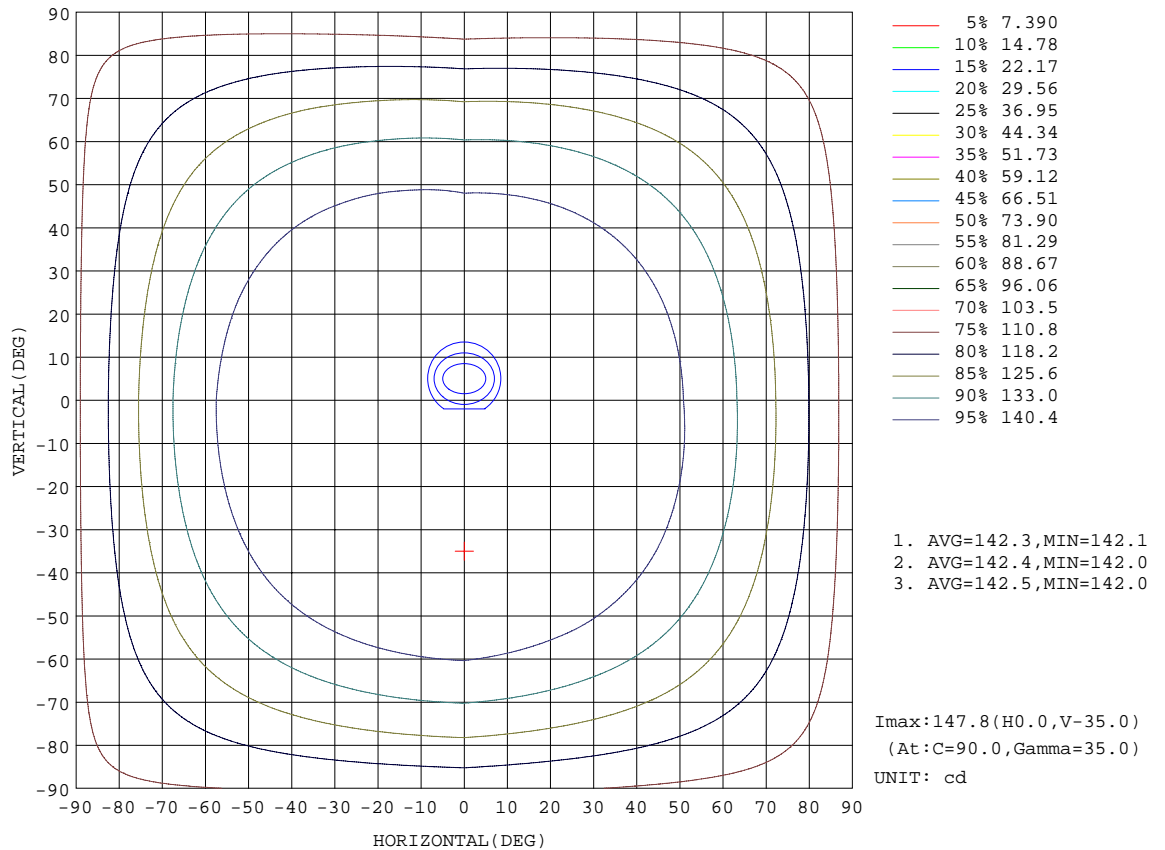
C Range: 0 - 360DEG
C Interval: 90.0DEG
Test Speed: HIGH
Temperature:25.3DEG
Operators:陈庆玲
Test Date:2017-12-13

γ Range: 0 - 180DEG
γ Interval: 1.0DEG
Test System:EVERFINE GO-SPEX500_V1 SYSTEM V2.0.363T
Humidity:40%
Test Distance:5.060m [K=1.0000]
Remarks:

EVERFINE GONIOPHOTOMETERS SYSTEM TEST REPORT

ISOCANDELA DIAGRAM

Test:U:120.0V I:0.1442A P:13.35W PF:0.7714 Freq:59.98Hz Lamp Flux:1259.57x1 lm		
NAME: A19-13-E26-850-DIM	TYPE:LED	WEIGHT:
SPEC.:120V/13.5W/11001M	DIM.:	SERIAL No.:A1719909A001
MFR.: RAB LIGHTING INC	SUR.:	Shielding Angle:



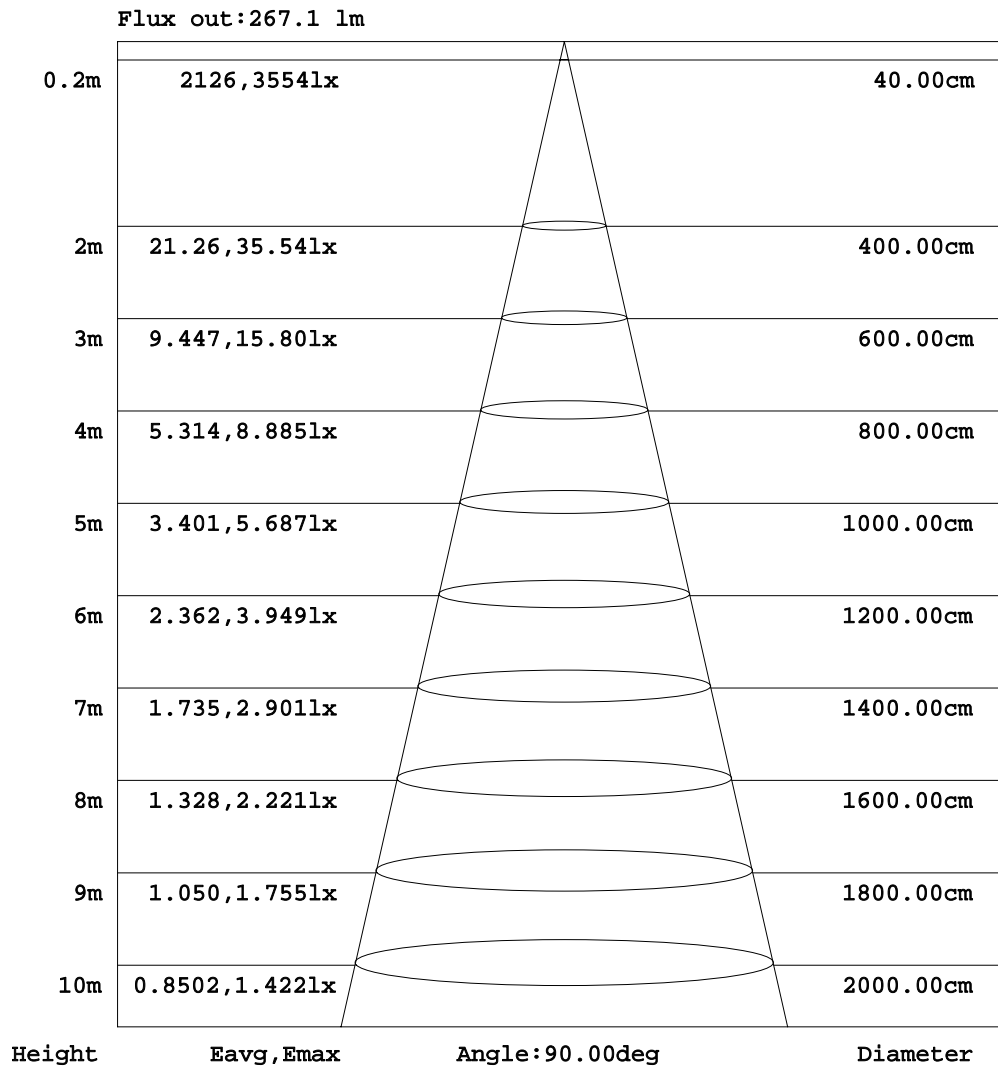
C Range: 0 - 360DEG
 C Interval: 90.0DEG
 Test Speed: HIGH
 Temperature:25.3DEG
 Operators:陈庆玲
 Test Date:2017-12-13

γ Range: 0 - 180DEG
 γ Interval: 1.0DEG
 Test System:EVERFINE GO-SPEX500_V1 SYSTEM V2.0.363T
 Humidity:40%
 Test Distance:5.060m [K=1.0000]
 Remarks:

EVERFINE GONIOPHOTOMETERS SYSTEM TEST REPORT

AAI Figure

Test:U:120.0V I:0.1442A P:13.35W PF:0.7714 Freq:59.98Hz Lamp Flux:1259.57x1 lm		
NAME: A19-13-E26-850-DIM	TYPE:LED	WEIGHT:
SPEC.:120V/13.5W/11001M	DIM.:	SERIAL No.:A1719909A001
MFR.: RAB LIGHTING INC	SUR.:	Shielding Angle:



Note:The Curves indicate the illuminated area and the average illumination when the luminaire is at different distance.

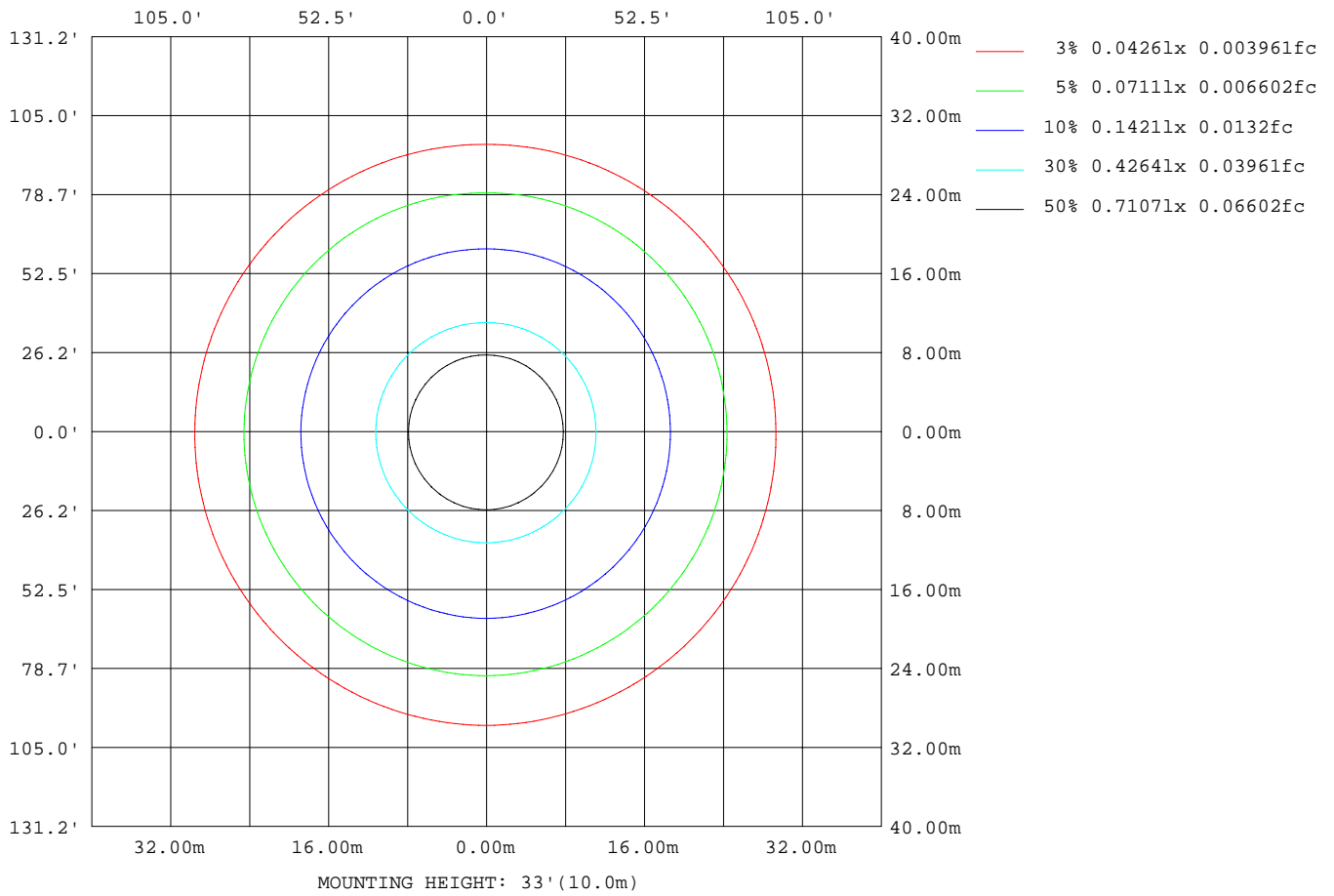
C Range: 0 - 360DEG
 C Interval: 90.0DEG
 Test Speed: HIGH
 Temperature:25.3DEG
 Operators:陈庆玲
 Test Date:2017-12-13

γ Range: 0 - 180DEG
 γ Interval: 1.0DEG
 Test System:EVERFINE GO-SPEX500_V1 SYSTEM V2.0.363T
 Humidity:40%
 Test Distance:5.060m [K=1.0000]
 Remarks:

EVERFINE GONIOPHOTOMETERS SYSTEM TEST REPORT

ISOLUX DIAGRAM

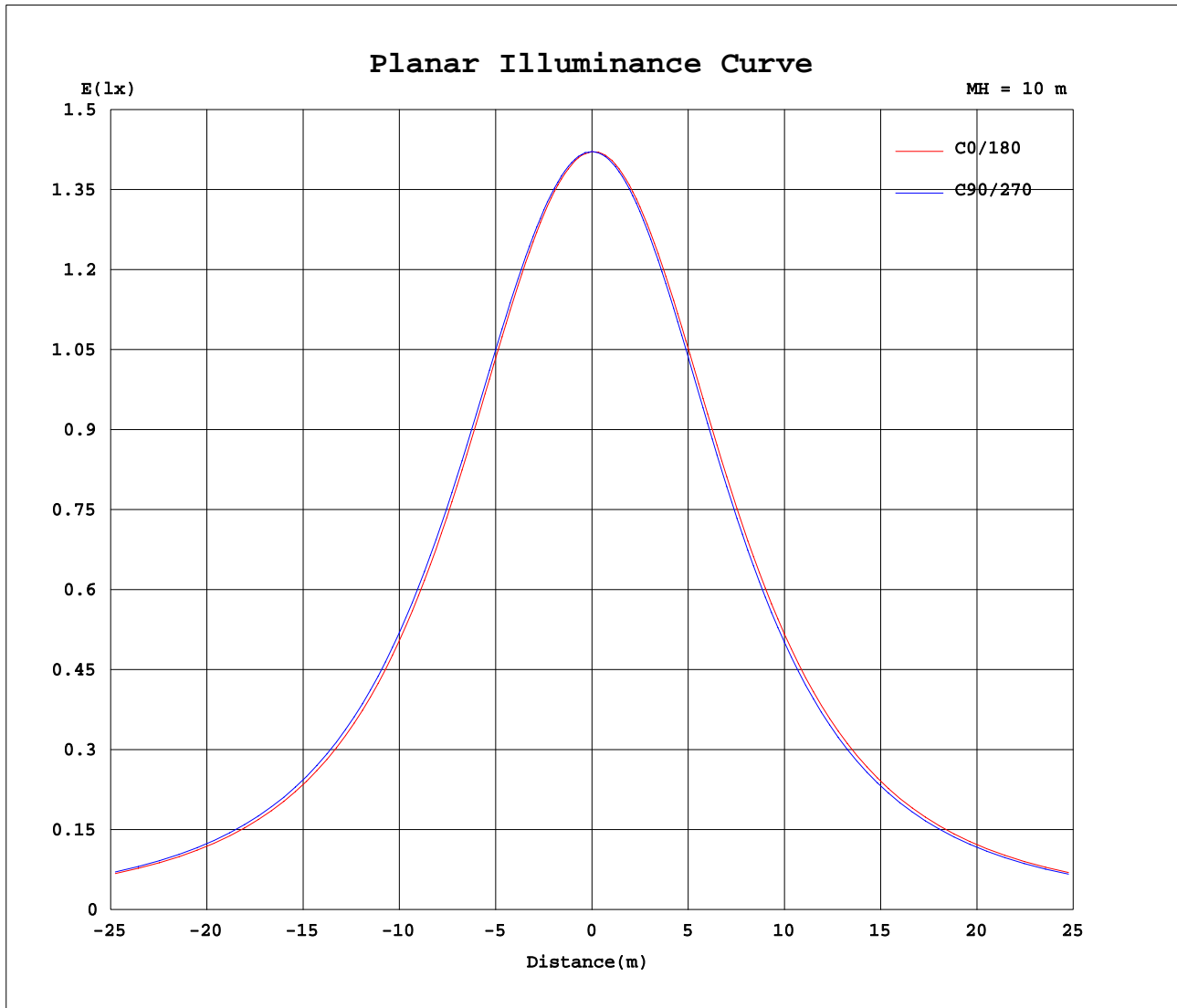
Test:U:120.0V I:0.1442A P:13.35W PF:0.7714 Freq:59.98Hz Lamp Flux:1259.57x1 lm		
NAME: A19-13-E26-850-DIM	TYPE:LED	WEIGHT:
SPEC.:120V/13.5W/11001M	DIM.:	SERIAL No.:A1719909A001
MFR.: RAB LIGHTING INC	SUR.:	Shielding Angle:



C Range: 0 - 360DEG
 C Interval: 90.0DEG
 Test Speed: HIGH
 Temperature: 25.3DEG
 Operators: 陈庆玲
 Test Date: 2017-12-13

γ Range: 0 - 180DEG
 γ Interval: 1.0DEG
 Test System: EVERFINE GO-SPEX500_V1 SYSTEM V2.0.363T
 Humidity: 40%
 Test Distance: 5.060m [K=1.0000]
 Remarks:

Planar Illuminance Curve



C Range: 0 - 360DEG
 C Interval: 90.0DEG
 Test Speed: HIGH
 Temperature: 25.3DEG
 Operators: 陈庆玲
 Test Date: 2017-12-13

γ Range: 0 - 180DEG
 γ Interval: 1.0DEG
 Test System: EVERFINE GO-SPEX500_V1 SYSTEM V2.0.363T
 Humidity: 40%
 Test Distance: 5.060m [K=1.0000]
 Remarks:

EVERFINE GONIOPHOTOMETERS SYSTEM TEST REPORT

LUMINOUS DISTRIBUTION INTENSITY DATA

Test:U:120.0V I:0.1442A P:13.35W PF:0.7714 Freq:59.98Hz Lamp Flux:1259.57x1 lm		
NAME: A19-13-E26-850-DIM	TYPE:LED	WEIGHT:
SPEC.:120V/13.5W/11001M	DIM.:	SERIAL No.:A1719909A001
MFR.: RAB LIGHTING INC	SUR.:	Shielding Angle:

Table--1

UNIT: cd

C(DEG) γ (DEG)	0	90	180	270															
0	142	142	142	142															
5	142	142	143	142															
10	142	143	143	143															
15	143	144	144	143															
20	144	145	146	144															
25	144	146	147	145															
30	145	147	148	145															
35	145	148	148	144															
40	144	148	147	143															
45	143	147	146	142															
50	141	145	144	139															
55	138	143	142	137															
60	135	141	139	133															
65	132	137	135	129															
70	128	133	131	125															
75	123	129	126	120															
80	118	124	121	115															
85	113	119	115	109															
90	107	113	110	104															
95	101	107	104	97.7															
100	95.5	101	97.3	91.6															
105	89.3	94.3	90.6	85.3															
110	82.9	87.7	84.1	78.9															
115	76.5	81.0	77.4	72.4															
120	69.9	74.2	70.6	65.9															
125	63.4	67.4	63.9	59.3															
130	56.9	60.6	57.1	52.8															
135	50.4	53.9	50.5	46.6															
140	44.2	47.3	44.1	40.5															
145	38.1	41.0	37.8	34.6															
150	32.4	34.8	32.0	29.1															
155	27.0	28.8	26.4	23.9															
160	21.6	22.9	21.2	19.0															
165	16.1	17.0	15.9	13.9															
170	9.92	10.5	9.43	7.73															
175	0.26	0.26	0.22	0.22															
180	0.25	0.25	0.25	0.25															

C Range: 0 - 360DEG
 C Interval: 90.0DEG
 Test Speed: HIGH
 Temperature:25.3DEG
 Operators:陈庆玲
 Test Date:2017-12-13

γ Range: 0 - 180DEG
 γ Interval: 1.0DEG
 Test System:EVERFINE GO-SPEX500_V1 SYSTEM V2.0.363T
 Humidity:40%
 Test Distance:5.060m [K=1.0000]
 Remarks: