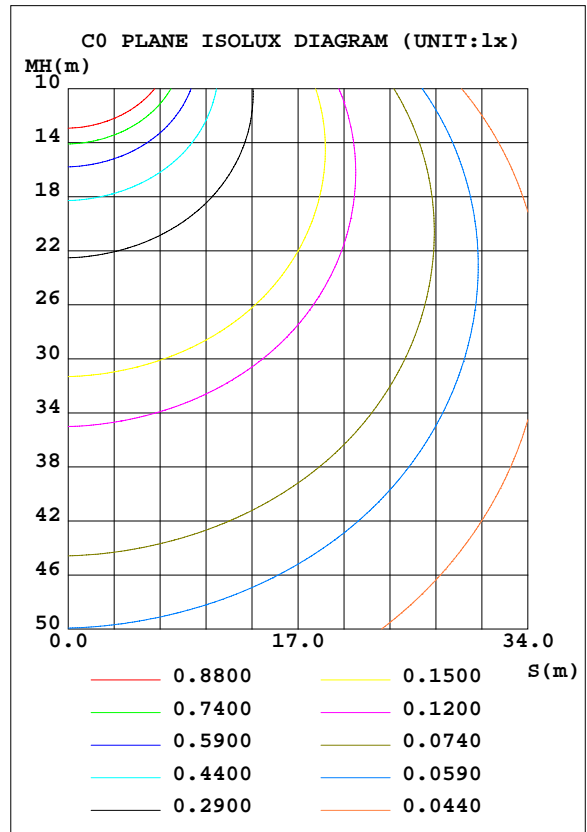
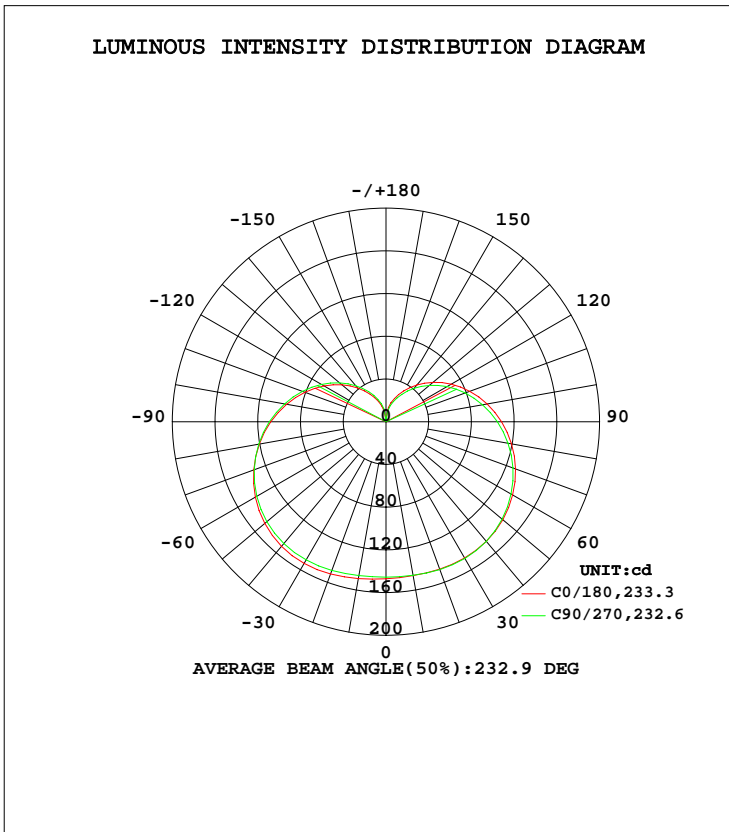


EVERFINE GONIOPHOTOMETERS SYSTEM TEST REPORT

LUMINAIRE PHOTOMETRIC TEST REPORT

Test:U:120.1V I:0.1309A P:12.53W PF:0.7972 Freq:59.98Hz Lamp Flux:1257.28x1 lm		
NAME: A19-13-GU24-850-DIM	TYPE:LED	WEIGHT:
SPEC.:120V/12.5W/1100LM	DIM.:	SERIAL No.:A1811880A001
MFR.: RAB LIGHTING INC	SUR.:	Shielding Angle:

DATA OF LAMP		PHOTOMETRIC DATA Eff: 100.37 lm/W			
MODEL		I _{max} (cd)	153.3	S/MH(C0/180)	1.59
NOMINAL POWER(W)	12.5	LOR(%)	100.0	S/MH(C90/270)	1.57
RATED VOLTAGE(V)	120	TOTAL FLUX(lm)	1257.3	η UP, DN(C0-180)	16.1, 33.2
NOMINAL FLUX(lm)	1257.28	CIE CLASS	SEMI-D.	η UP, DN(C180-360)	16.7, 34.0
LAMPS INSIDE	1	η up(%)	32.8	CIBSE SHR NOM	1.75
TEST VOLTAGE(V)	120	η down(%)	67.2	CIBSE SHR MAX	1.75



C Range: 0 - 360DEG
 C Interval: 22.5DEG
 Test Speed: HIGH
 Temperature:25.3DEG
 Operators:陈庆玲
 Test Date:2018-09-09

γ Range: 0 - 180DEG
 γ Interval: 5.0DEG
 Test System:EVERFINE GO-SPEX500_V1 SYSTEM V2.0.363T
 Humidity:40%
 Test Distance:5.000m [K=1.0000]
 Remarks:

EVERFINE GONIOPHOTOMETERS SYSTEM TEST REPORT

ZONAL FLUX DIAGRAM

ZONAL FLUX DIAGRAM:

γ	C0	C45	C90	C135	C180	C225	C270	C315	γ	Φ zone	Φ total	%lum,lamp
10	146.3	145.7	146.0	146.7	149.1	147.8	146.3	144.9	0- 10	13.95	13.95	1.11,1.11
20	146.9	146.5	147.3	148.7	151.8	150.4	148.1	145.8	10- 20	41.75	55.70	4.43,4.43
30	147.4	146.6	147.8	149.6	153.3	152.1	149.4	146.9	20- 30	68.80	124.5	9.9,9.9
40	146.2	145.1	146.2	148.1	152.3	151.4	148.9	146.2	30- 40	93.34	217.8	17.3,17.3
50	142.8	141.3	142.0	143.7	148.2	147.8	145.7	143.2	40- 50	113.2	331.1	26.3,26.3
60	137.0	135.1	135.2	136.7	141.2	141.4	139.6	137.7	50- 60	126.6	457.7	36.4,36.4
70	129.0	126.8	126.5	127.5	131.8	132.5	131.3	129.8	60- 70	132.7	590.4	47,47
80	119.3	116.7	116.1	116.5	120.5	121.5	121.0	120.1	70- 80	131.4	721.8	57.4,57.4
90	108.3	105.5	104.4	104.3	107.9	109.2	109.3	109.1	80- 90	123.4	845.1	67.2,67.2
100	96.24	93.31	91.87	91.43	94.60	95.98	96.54	96.87	90-100	110.1	955.3	76,76
110	83.54	80.65	78.95	78.21	80.88	82.36	83.32	84.10	100-110	93.17	1048	83.4,83.4
120	70.51	67.72	65.92	64.90	67.21	68.77	69.97	71.06	110-120	74.38	1123	89.3,89.3
130	57.56	54.95	53.06	51.98	53.91	55.45	56.78	58.05	120-130	55.45	1178	93.7,93.7
140	45.08	42.68	40.91	39.86	41.32	42.81	44.15	45.46	130-140	38.01	1216	96.7,96.7
150	33.41	31.33	29.74	28.82	29.91	31.27	32.53	33.71	140-150	23.36	1240	98.6,98.6
160	23.24	21.45	20.17	19.31	20.06	21.35	22.41	23.42	150-160	12.29	1252	99.6,99.6
170	13.60	11.35	10.27	9.181	9.942	11.60	12.75	13.84	160-170	4.825	1257	100,100
180	1.437	1.416	1.409	1.389	1.445	1.416	1.406	1.392	170-180	0.5387	1257	100,100
DEG	LUMINOUS INTENSITY:cd									UNIT:lm		

Conical surface Flux(90deg): 272.33 lm

%lum = 21.7%
%lamp = 21.7%

Conical surface Flux(120deg): 457.7 lm

%lum = 36.4%
%lamp = 36.4%

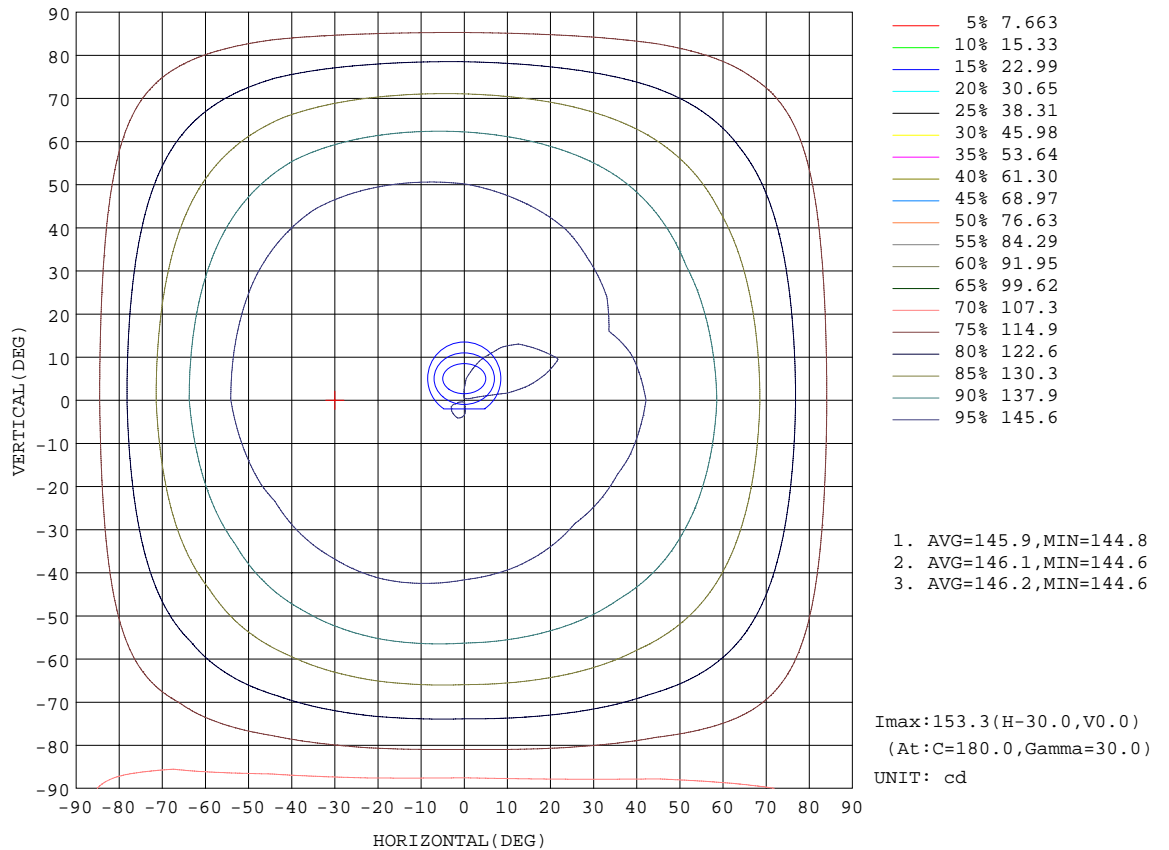
C Range: 0 - 360DEG
C Interval: 22.5DEG
Test Speed: HIGH
Temperature:25.3DEG
Operators:陈庆玲
Test Date:2018-09-09

γ Range: 0 - 180DEG
γ Interval: 5.0DEG
Test System:EVERFINE GO-SPEX500_V1 SYSTEM V2.0.363T
Humidity:40%
Test Distance:5.000m [K=1.0000]
Remarks:

EVERFINE GONIOPHOTOMETERS SYSTEM TEST REPORT

ISOCANDELA DIAGRAM

Test:U:120.1V I:0.1309A P:12.53W PF:0.7972 Freq:59.98Hz Lamp Flux:1257.28x1 lm		
NAME: A19-13-GU24-850-DIM	TYPE:LED	WEIGHT:
SPEC.:120V/12.5W/1100LM	DIM.:	SERIAL No.:A1811880A001
MFR.: RAB LIGHTING INC	SUR.:	Shielding Angle:



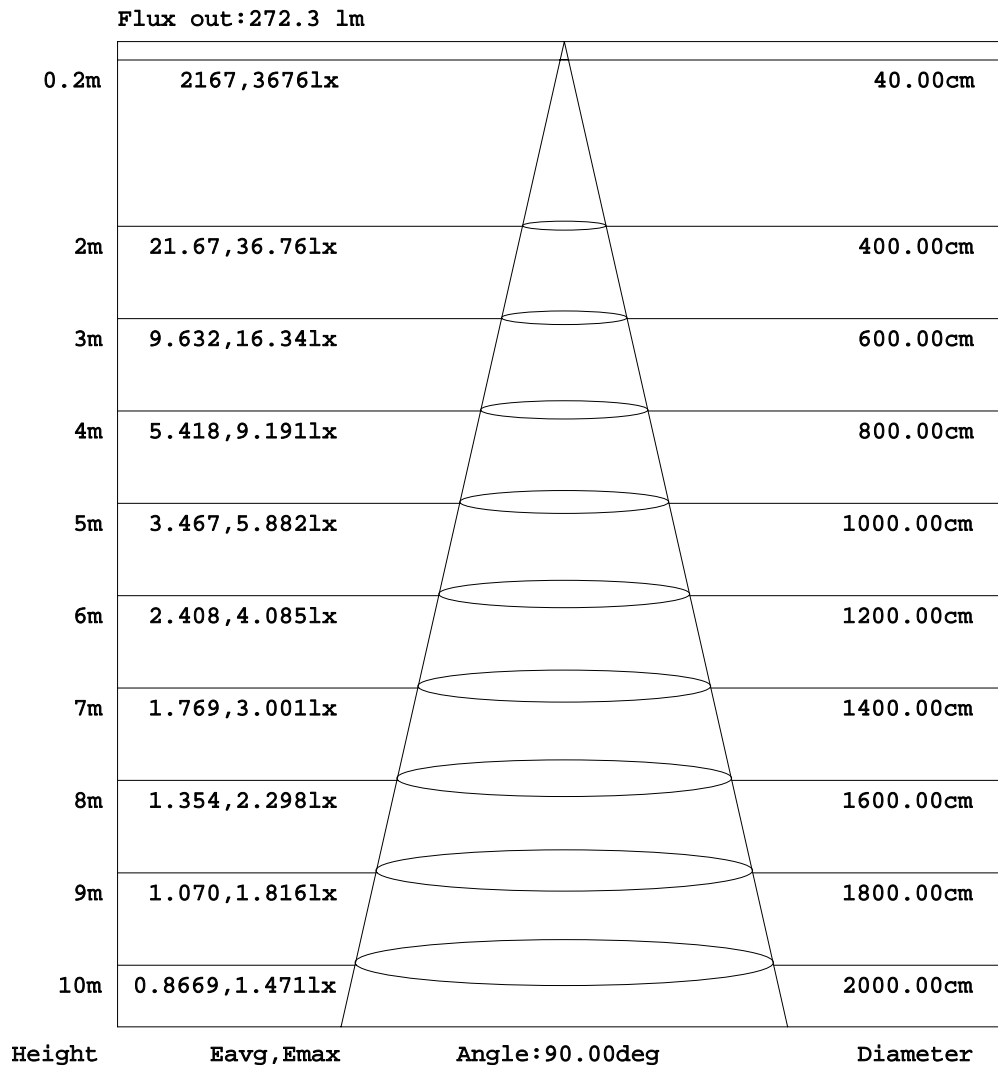
C Range: 0 - 360DEG
 C Interval: 22.5DEG
 Test Speed: HIGH
 Temperature:25.3DEG
 Operators:陈庆玲
 Test Date:2018-09-09

γ Range: 0 - 180DEG
 γ Interval: 5.0DEG
 Test System:EVERFINE GO-SPEX500_V1 SYSTEM V2.0.363T
 Humidity:40%
 Test Distance:5.000m [K=1.0000]
 Remarks:

EVERFINE GONIOPHOTOMETERS SYSTEM TEST REPORT

AAI Figure

Test:U:120.1V I:0.1309A P:12.53W PF:0.7972 Freq:59.98Hz Lamp Flux:1257.28x1 lm		
NAME: A19-13-GU24-850-DIM	TYPE:LED	WEIGHT:
SPEC.:120V/12.5W/1100LM	DIM.:	SERIAL No.:A1811880A001
MFR.: RAB LIGHTING INC	SUR.:	Shielding Angle:



Note:The Curves indicate the illuminated area and the average illumination when the luminaire is at different distance.

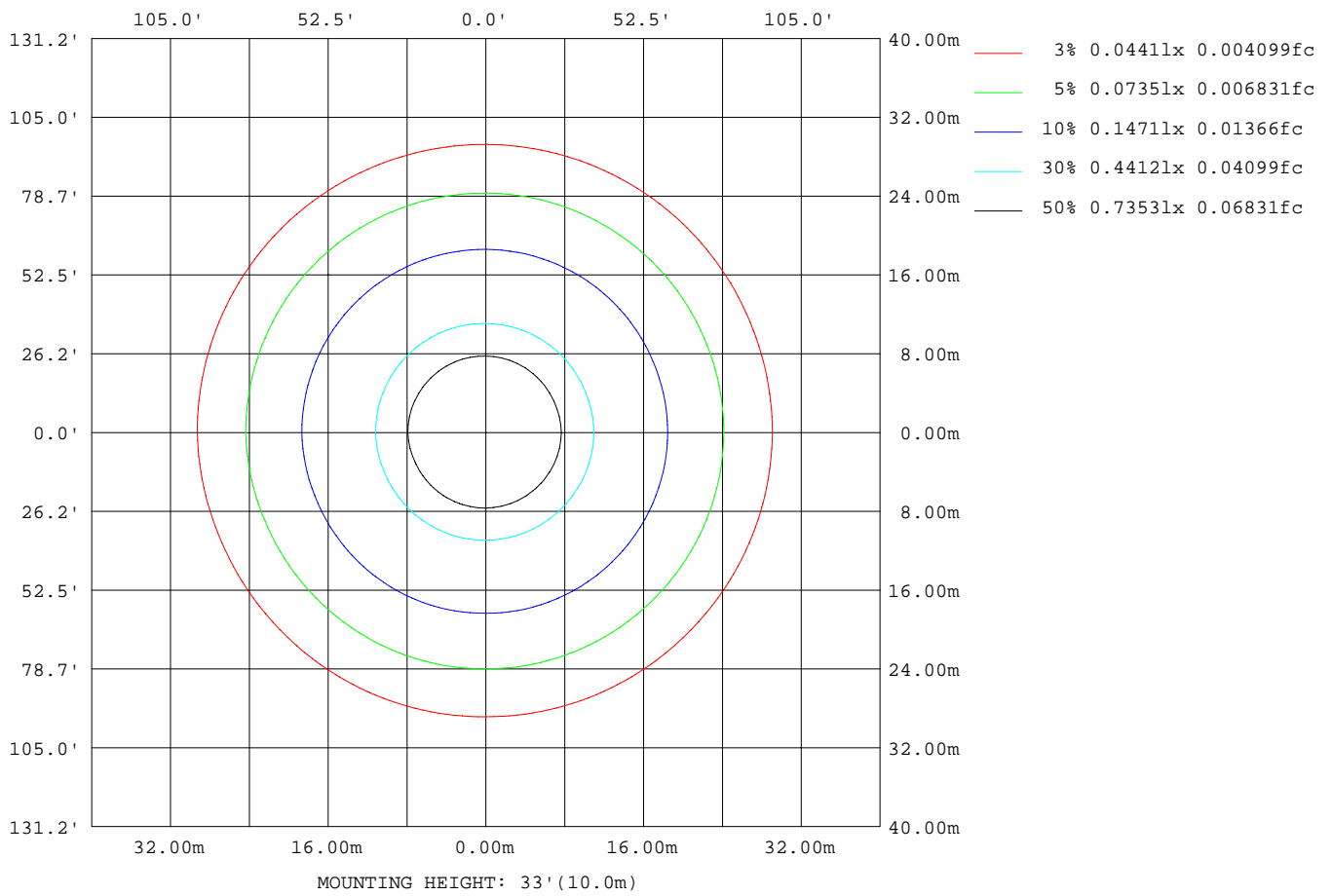
C Range: 0 - 360DEG
 C Interval: 22.5DEG
 Test Speed: HIGH
 Temperature:25.3DEG
 Operators:陈庆玲
 Test Date:2018-09-09

γ Range: 0 - 180DEG
 γ Interval: 5.0DEG
 Test System:EVERFINE GO-SPEX500_V1 SYSTEM V2.0.363T
 Humidity:40%
 Test Distance:5.000m [K=1.0000]
 Remarks:

EVERFINE GONIOPHOTOMETERS SYSTEM TEST REPORT

ISOLUX DIAGRAM

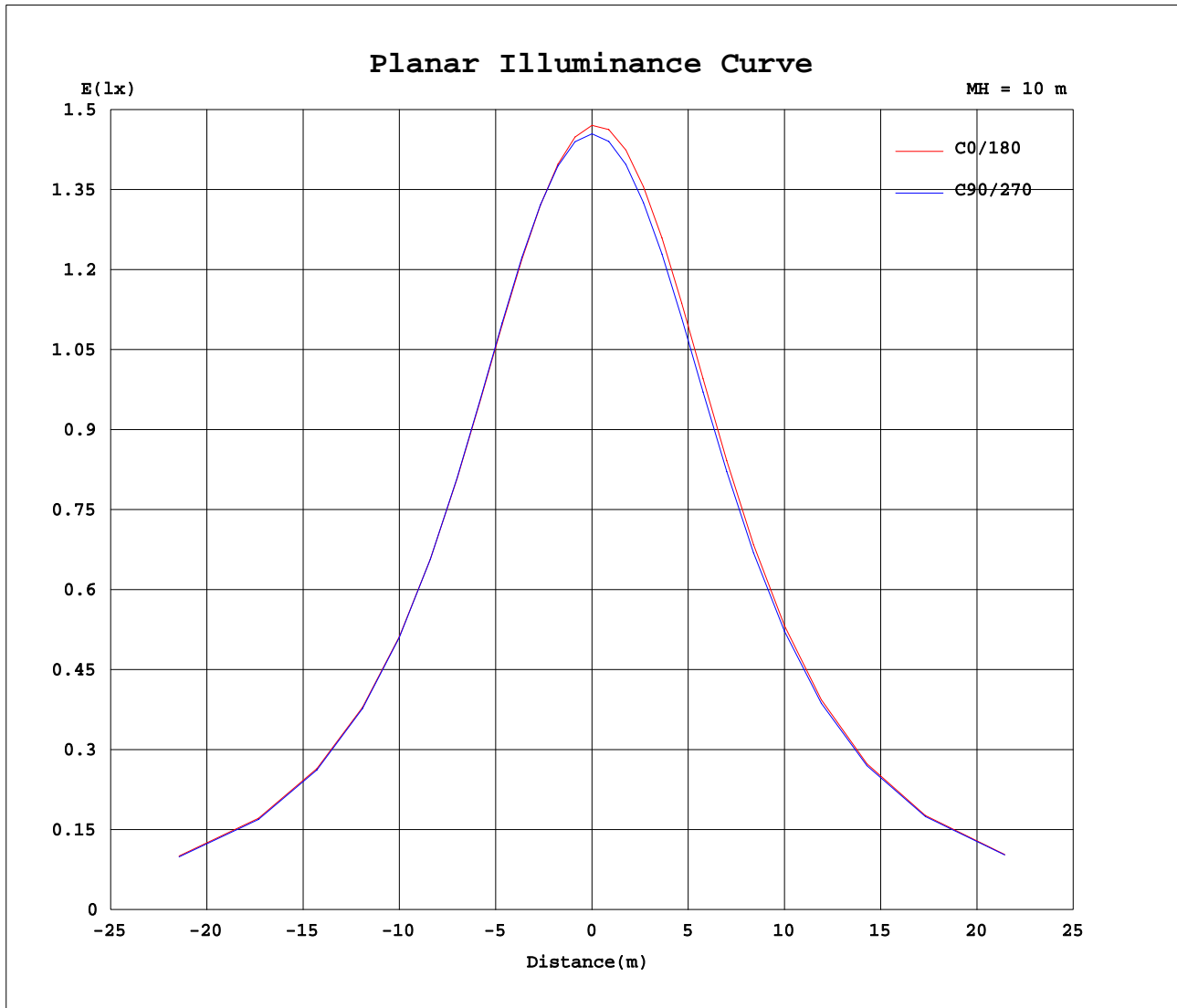
Test:U:120.1V I:0.1309A P:12.53W PF:0.7972 Freq:59.98Hz Lamp Flux:1257.28x1 lm		
NAME: A19-13-GU24-850-DIM	TYPE:LED	WEIGHT:
SPEC.:120V/12.5W/1100LM	DIM.:	SERIAL No.:A1811880A001
MFR.: RAB LIGHTING INC	SUR.:	Shielding Angle:



C Range: 0 - 360DEG
 C Interval: 22.5DEG
 Test Speed: HIGH
 Temperature: 25.3DEG
 Operators: 陈庆玲
 Test Date: 2018-09-09

γ Range: 0 - 180DEG
 γ Interval: 5.0DEG
 Test System: EVERFINE GO-SPEX500_V1 SYSTEM V2.0.363T
 Humidity: 40%
 Test Distance: 5.000m [K=1.0000]
 Remarks:

Planar Illuminance Curve



C Range: 0 - 360DEG
 C Interval: 22.5DEG
 Test Speed: HIGH
 Temperature: 25.3DEG
 Operators: 陈庆玲
 Test Date: 2018-09-09

γ Range: 0 - 180DEG
 γ Interval: 5.0DEG
 Test System: EVERFINE GO-SPEX500_V1 SYSTEM V2.0.363T
 Humidity: 40%
 Test Distance: 5.000m [K=1.0000]
 Remarks:

EVERFINE GONIOPHOTOMETERS SYSTEM TEST REPORT

LUMINOUS DISTRIBUTION INTENSITY DATA

Test:U:120.1V I:0.1309A P:12.53W PF:0.7972 Freq:59.98Hz Lamp Flux:1257.28x1 lm		
NAME: A19-13-GU24-850-DIM	TYPE:LED	WEIGHT:
SPEC.:120V/12.5W/1100LM	DIM.:	SERIAL No.:A1811880A001
MFR.: RAB LIGHTING INC	SUR.:	Shielding Angle:

Table--1

UNIT: cd

C(DEG)\ γ (DEG)	0	22.5	45	67.5	90	112.5	135	157.5	180	202.5	225	247.5	270	292.5	315	337.5			
0	147	146	146	146	145	145	145	145	147	146	146	146	145	145	145	145			
5	147	146	146	146	146	146	146	146	148	147	147	146	146	145	145	145			
10	146	146	146	146	146	146	147	147	149	148	148	147	146	146	145	145			
15	147	146	146	146	147	147	148	148	150	150	149	148	147	146	145	145			
20	147	146	146	147	147	148	149	149	152	151	150	149	148	147	146	145			
25	147	147	147	147	148	149	149	150	153	152	152	150	149	148	146	146			
30	147	147	147	147	148	149	150	150	153	153	152	151	149	148	147	146			
35	147	146	146	147	147	148	149	150	153	153	152	151	149	148	147	146			
40	146	145	145	146	146	147	148	149	152	152	151	150	149	148	146	145			
45	145	144	144	144	144	145	146	147	151	151	150	149	148	146	145	144			
50	143	142	141	142	142	143	144	145	148	148	148	147	146	144	143	142			
55	140	139	138	139	139	140	140	142	145	145	145	144	143	142	141	140			
60	137	136	135	135	135	136	137	138	141	141	141	141	140	139	138	137			
65	133	132	131	131	131	132	132	133	137	137	137	137	136	135	134	133			
70	129	128	127	127	127	127	127	129	132	132	132	132	131	131	130	129			
75	124	123	122	122	121	122	122	123	126	127	127	127	126	126	125	124			
80	119	118	117	116	116	116	116	117	120	121	121	121	121	121	120	119			
85	114	113	111	111	110	111	111	111	114	115	115	115	115	115	115	114			
90	108	107	106	105	104	105	104	105	108	108	109	109	109	109	109	108			
95	102	101	99.5	98.9	98.2	98.3	97.9	98.7	101	102	103	103	103	103	103	102			
100	96.2	95.0	93.3	92.7	91.9	91.9	91.4	92.1	94.6	95.1	96.0	96.2	96.5	96.7	96.9	96.4			
105	90.0	88.5	87.0	86.3	85.4	85.4	84.8	85.4	87.7	88.3	89.2	89.5	90.0	90.3	90.7	90.2			
110	83.5	82.3	80.6	79.9	79.0	78.8	78.2	78.8	80.9	81.4	82.4	82.7	83.3	83.8	84.1	83.8			
115	77.0	75.9	74.2	73.5	72.5	72.3	71.5	72.1	74.0	74.6	75.6	76.0	76.6	77.2	77.6	77.4			
120	70.5	69.4	67.7	67.0	65.9	65.7	64.9	65.4	67.2	67.8	68.8	69.2	70.0	70.6	71.1	70.9			
125	64.0	62.9	61.3	60.5	59.4	59.2	58.4	58.8	60.5	61.0	62.1	62.5	63.3	63.9	64.5	64.4			
130	57.6	56.5	54.9	54.2	53.1	52.8	52.0	52.4	53.9	54.4	55.4	55.9	56.8	57.4	58.0	58.0			
135	51.2	50.2	48.7	47.9	46.9	46.6	45.8	46.2	47.5	48.0	49.0	49.5	50.4	51.0	51.7	51.6			
140	45.1	44.1	42.7	41.9	40.9	40.6	39.9	40.2	41.3	41.9	42.8	43.4	44.2	44.9	45.5	45.5			
145	39.1	38.2	36.9	36.1	35.2	34.9	34.2	34.5	35.4	36.0	36.9	37.4	38.2	38.9	39.5	39.6			
150	33.4	32.6	31.3	30.6	29.7	29.5	28.8	29.1	29.9	30.5	31.3	31.8	32.5	33.2	33.7	33.9			
155	28.1	27.4	26.2	25.6	24.8	24.5	23.9	24.2	24.8	25.3	26.1	26.6	27.3	27.9	28.4	28.5			
160	23.2	22.5	21.5	20.9	20.2	19.8	19.3	19.6	20.1	20.6	21.3	21.8	22.4	23.0	23.4	23.6			
165	18.5	17.7	16.6	16.2	15.6	14.8	14.6	15.0	15.3	16.0	16.7	17.2	17.8	18.4	18.8	18.9			
170	13.6	12.7	11.4	10.3	10.3	8.76	9.18	9.97	9.94	10.8	11.6	12.1	12.7	13.3	13.8	14.1			
175	3.76	3.46	2.86	2.36	1.66	1.76	1.48	1.84	1.36	1.36	1.62	1.81	2.41	2.75	3.03	3.05			
180	1.44	1.43	1.42	1.41	1.41	1.40	1.39	1.39	1.44	1.43	1.42	1.41	1.41	1.39	1.39	1.39			

C Range: 0 - 360DEG
 C Interval: 22.5DEG
 Test Speed: HIGH
 Temperature:25.3DEG
 Operators:陈庆玲
 Test Date:2018-09-09

γ Range: 0 - 180DEG
 γ Interval: 5.0DEG
 Test System:EVERFINE GO-SPEX500_V1 SYSTEM V2.0.363T
 Humidity:40%
 Test Distance:5.000m [K=1.0000]
 Remarks: