

Performance Test Report

Report No.: 20092109-P0

Client information:		
Name	RAB Lighting Inc	
Address	Northvale, New Jersey 07647 USA	
Reception Date	2020-08-10	
Test Date	2020-08-10~2020-08-13	
Sample description:		
Sample Type	Self-ballasted LED lamp	
Type/Model	A19-4.5/9/14.5-E26-830-3WAY	
Test Voltage/Frequency	120V/60Hz	
Sample Quantities.	3	
Sample No.	001~003	
Test standard:		
According to IES LM-79-08		
Remarks of this test:		
/		
Description of measurement uncertainty:		
/		
Test case verdicts:		
Test case does not apply to the test object.....:	N/A	
Test item does meet the requirement.....:	P	
Test item does not meet the requirement.....:	F	
General test result: see test result		
Prepared by /Date		
Reviewed by /Date		
Approved by/Date		

This test report can't be reproduced except in full, without written approval of the laboratory.
And this test report only to the items tested.

1. Performance Test Result

1.1 Photometric Measurements at 25°C - Integrating Sphere Method

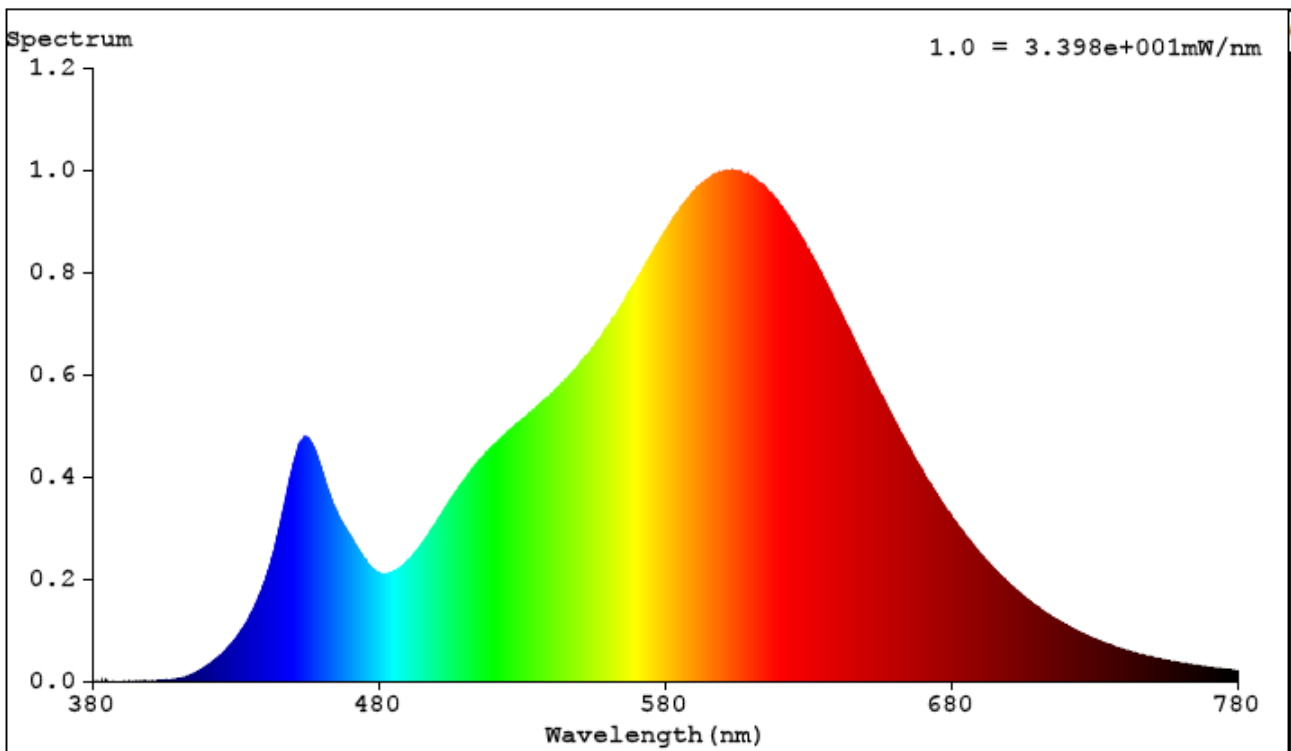
Sample No.	Base orientation	Input Voltage (Vac)	Input Current (mA)	Input Power (W)	Input Power Factor	Absolute Luminous Flux (lm)	Lumen Efficacy (lm/W)
001	Base up	120.0	125.10	14.70	0.979	1732.3	117.87
002	Base up	120.0	126.30	14.84	0.979	1756.9	118.39
003	Base up	120.0	124.00	14.57	0.979	1729.7	118.70
Average		120.0	125.13	14.70	0.979	1739.6	118.32

Sample No.	Base orientation	Correlated Color Temperature (K)	CRI	CIE 1931 Chromaticity Coordinate		CIE 1976 Chromaticity Coordinate		Radiant Flux (W)	Ambient Temp (°C)	Rf	Rg
				x	y	u'	v'				
001	Base up	2994	83.0	0.4382	0.4059	0.2506	0.5223	5.3773	25.3	85	95
002	Base up	2976	83.0	0.4398	0.4070	0.2511	0.5230	5.4514	25.3	85	95
003	Base up	2977	82.9	0.4396	0.4067	0.2512	0.5228	5.3667	25.2	85	95
Average		2982	83.0	0.4392	0.4065	0.2510	0.5227	5.3985	25.3	85	95

This test report can't be reproduced except in full, without written approval of the laboratory.
And this test report only to the items tested.

1.2 Test data

1.2.1 Spectral Power Distribution (sample No.:001)



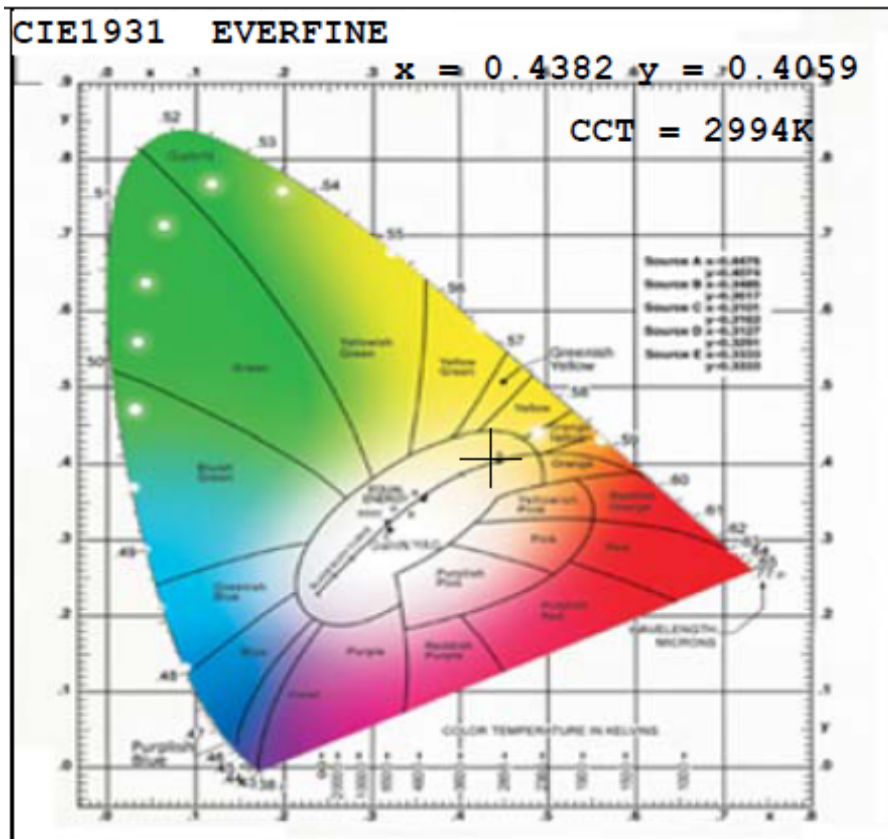
This test report can't be reproduced except in full, without written approval of the laboratory.
And this test report only to the items tested.

1.2.2 Tabulated Spectral Power Distribution (sample No.:001)

WL (nm)	Relative Spectral	Absolute Spectral (mW/nm)	WL (nm)	Relative Spectral	Absolute Spectral (mW/nm)
380	0.0096	0.3166	585	0.8796	29.05
385	0.0063	0.2081	590	0.9304	30.72
390	0.0052	0.1724	595	0.9653	31.87
395	0.005	0.1658	600	0.9886	32.64
400	0.0052	0.1731	605	0.9983	32.97
405	0.0071	0.2335	610	0.996	32.89
410	0.0125	0.4123	615	0.9727	32.12
415	0.0261	0.8611	620	0.9402	31.05
420	0.0458	1.511	625	0.8961	29.59
425	0.0687	2.269	630	0.8449	27.9
430	0.0978	3.23	635	0.7878	26.01
435	0.133	4.391	640	0.7278	24.03
440	0.1817	6	645	0.6656	21.98
445	0.2512	8.295	650	0.6048	19.97
450	0.3074	10.15	655	0.5441	17.97
455	0.3002	9.914	660	0.4856	16.04
460	0.253	8.353	665	0.4317	14.26
465	0.2136	7.054	670	0.3809	12.58
470	0.1887	6.23	675	0.3347	11.05
475	0.1725	5.696	680	0.293	9.675
480	0.172	5.679	685	0.2558	8.446
485	0.1903	6.283	690	0.2231	7.366
490	0.2196	7.252	695	0.1927	6.363
495	0.2545	8.405	700	0.1668	5.508
500	0.2908	9.602	705	0.1439	4.752
505	0.3234	10.68	710	0.1241	4.099
510	0.3512	11.6	715	0.1073	3.541
515	0.3743	12.36	720	0.0925	3.054
520	0.3936	13	725	0.0799	2.639
525	0.4121	13.61	730	0.0686	2.266
530	0.4318	14.26	735	0.0588	1.942
535	0.4526	14.94	740	0.0507	1.675
540	0.4756	15.71	745	0.0436	1.441
545	0.5026	16.59	750	0.0379	1.25
550	0.5336	17.62	755	0.0328	1.083
555	0.5692	18.8	760	0.0285	0.941
560	0.6107	20.17	765	0.0251	0.8292
565	0.6573	21.7	770	0.0221	0.7296
570	0.7091	23.41	775	0.0196	0.6469
575	0.7676	25.35	780	0.0184	0.6074
580	0.8237	27.2			

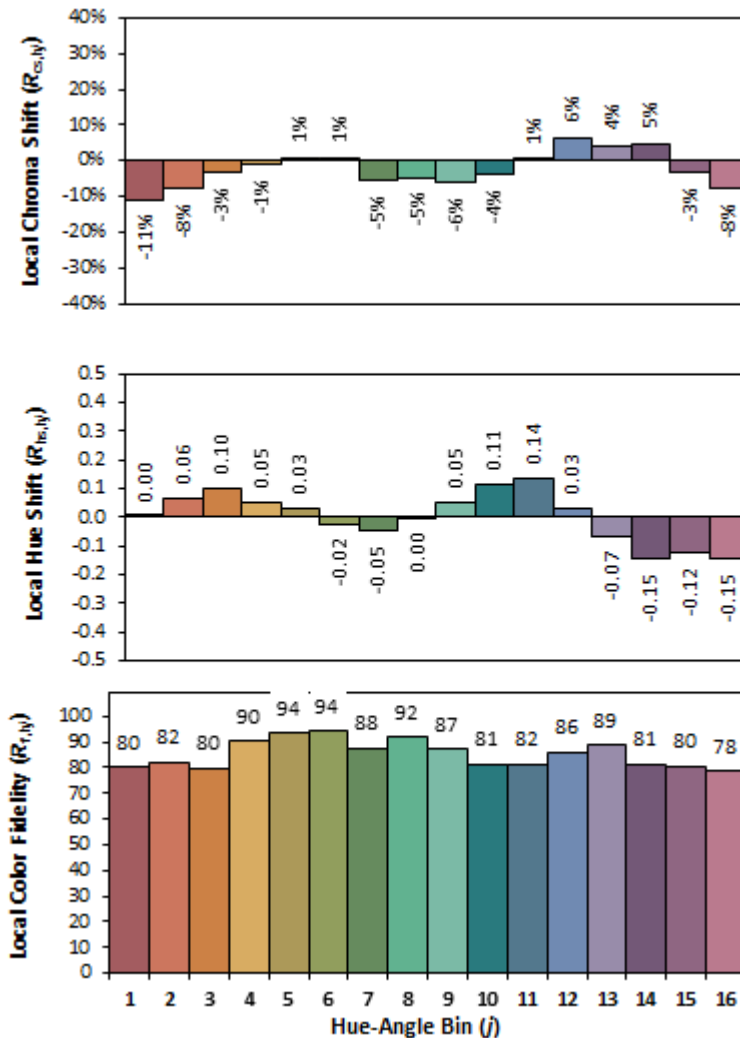
This test report can't be reproduced except in full, without written approval of the laboratory.
And this test report only to the items tested.

1.2.3 CIE Chromaticity Diagram (sample No.:001)



This test report can't be reproduced except in full, without written approval of the laboratory.
And this test report only to the items tested.

1.2.4 The TM-30 value for Color Rendition by Hue-angle bin



1.3 CONCLUSION

The results tabulated in this report are representative of the actual test samples submitted for this report only. The data is provided to the client for further evaluation. Compliance to the referenced specification requirements was not determined in this report.

This test report can't be reproduced except in full, without written approval of the laboratory.
And this test report only to the items tested.

ANNEX 1 PICTURE



Fig.1 View of sample

-----END-----

This test report can't be reproduced except in full, without written approval of the laboratory.
And this test report only to the items tested.