

Performance Test Report

Report No.: 20092108-P0

Client information:		
Name	RAB Lighting Inc	
Address	Northvale, New Jersey 07647 USA	
Reception Date	2019-06-21	
Test Date	2019-06-21~2019-06-27	
Sample description:		
Sample Type	Self-ballasted LED lamp	
Type/Model	A19-4.5/9/14.5-E26-850-3WAY	
Test Voltage/Frequency	120V/60Hz	
Sample Quantities.	10	
Sample No.	001~010	
Test standard:		
According to IES LM-79-08		
Remarks of this test:		
/		
Description of measurement uncertainty:		
/		
Test case verdicts:		
Test case does not apply to the test object.....:	N/A	
Test item does meet the requirement.....:	P	
Test item does not meet the requirement.....:	F	
General test result: see test result		
Prepared by /Date		
Reviewed by /Date		
Approved by/Date		

This test report can't be reproduced except in full, without written approval of the laboratory.
And this test report only to the items tested.

1. Performance Test Result

1.1 Photometric Measurements at 25°C - Integrating Sphere Method

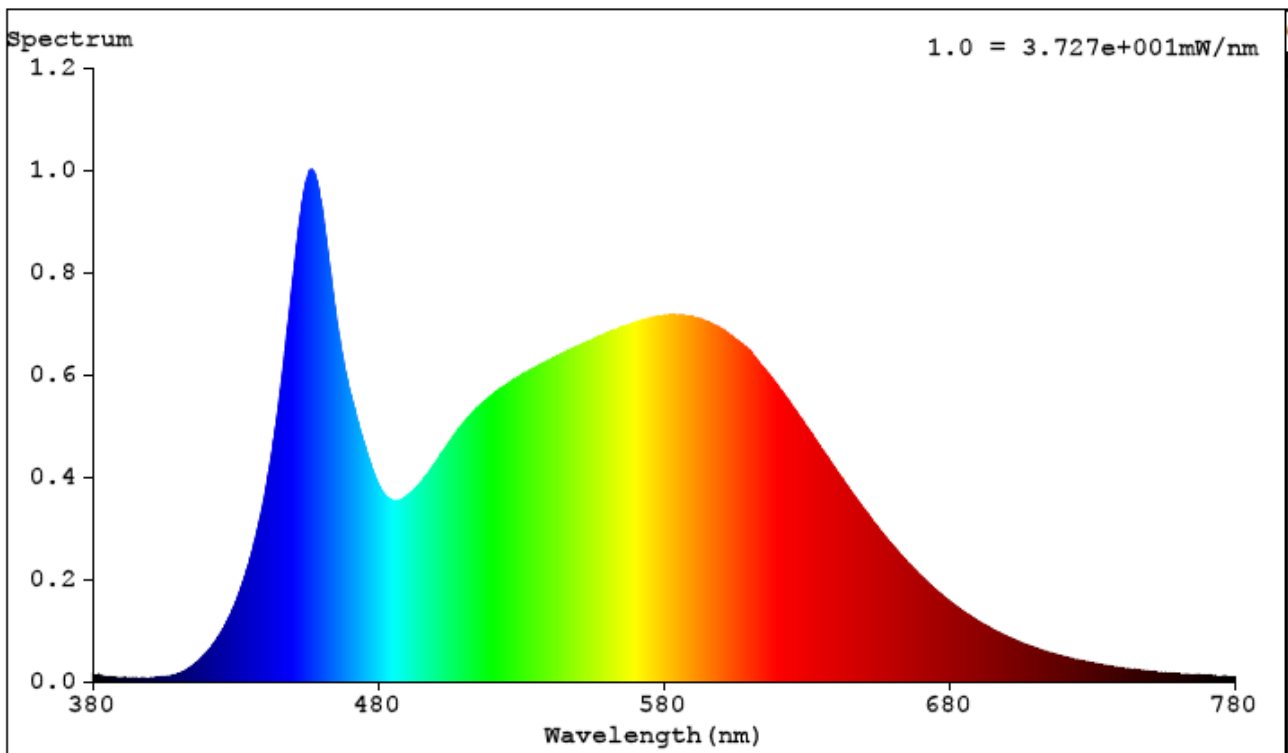
Sample No.	Base orientation	Input Voltage (Vac)	Input Current (mA)	Input Power (W)	Input Power Factor	Absolute Luminous Flux (lm)	Lumen Efficacy (lm/W)
001	Base up	119.9	120.40	14.10	0.977	1711.9	121.42
002	Base up	119.9	119.70	14.02	0.977	1747.4	124.61
003	Base up	119.9	116.90	13.68	0.976	1677.9	122.62
004	Base up	119.9	120.60	14.13	0.977	1708.6	120.89
005	Base up	119.9	121.80	14.28	0.978	1718.7	120.32
006	Base down	119.9	125.40	14.71	0.978	1743.1	118.51
007	Base down	119.9	116.70	13.67	0.976	1699.2	124.33
008	Base down	119.9	121.10	14.20	0.978	1747.4	123.03
009	Base down	119.9	121.40	14.24	0.978	1732.5	121.66
010	Base down	119.9	122.80	14.43	0.980	1780.6	123.38
Average		119.9	120.68	14.15	0.978	1726.7	122.08

Sample No.	Base orientation	Correlated Color Temperature (K)	CRI	CIE 1931 Chromaticity Coordinate		CIE 1976 Chromaticity Coordinate		Radiant Flux (W)	Ambient Temp (°C)	Rf	Rg
				x	y	u'	v'				
001	Base up	4940	83.6	0.3476	0.3606	0.2096	0.4894	5.3476	24.6	84	93
002	Base up	4981	83.7	0.3464	0.3598	0.2097	0.4899	5.7075	25.6	84	94
003	Base up	4952	83.7	0.3472	0.3601	0.2104	0.4909	5.5599	25.8	84	94
004	Base up	4965	83.9	0.3468	0.3595	0.2095	0.4887	5.3599	25.2	84	93
005	Base up	4945	83.6	0.3474	0.3603	0.2096	0.4892	5.3731	25.4	84	93
006	Base down	4915	83.6	0.3483	0.3613	0.2099	0.4898	5.4424	24.8	84	93
007	Base down	4918	83.6	0.3482	0.3609	0.2099	0.4896	5.3022	25.3	84	93
008	Base down	4942	83.5	0.3475	0.3608	0.2095	0.4894	5.4522	25.0	84	93
009	Base down	4925	83.7	0.3480	0.3604	0.2100	0.4893	5.4166	25.3	84	93
010	Base down	4843	83.6	0.3506	0.3631	0.2107	0.4910	5.5311	25.2	84	94
Average		4933	83.7	0.3478	0.3607	0.2099	0.4897	5.4493	25.2	84	93

This test report can't be reproduced except in full, without written approval of the laboratory.
And this test report only to the items tested.

1.2 Test data

1.2.1 Spectral Power Distribution (sample No.:001)



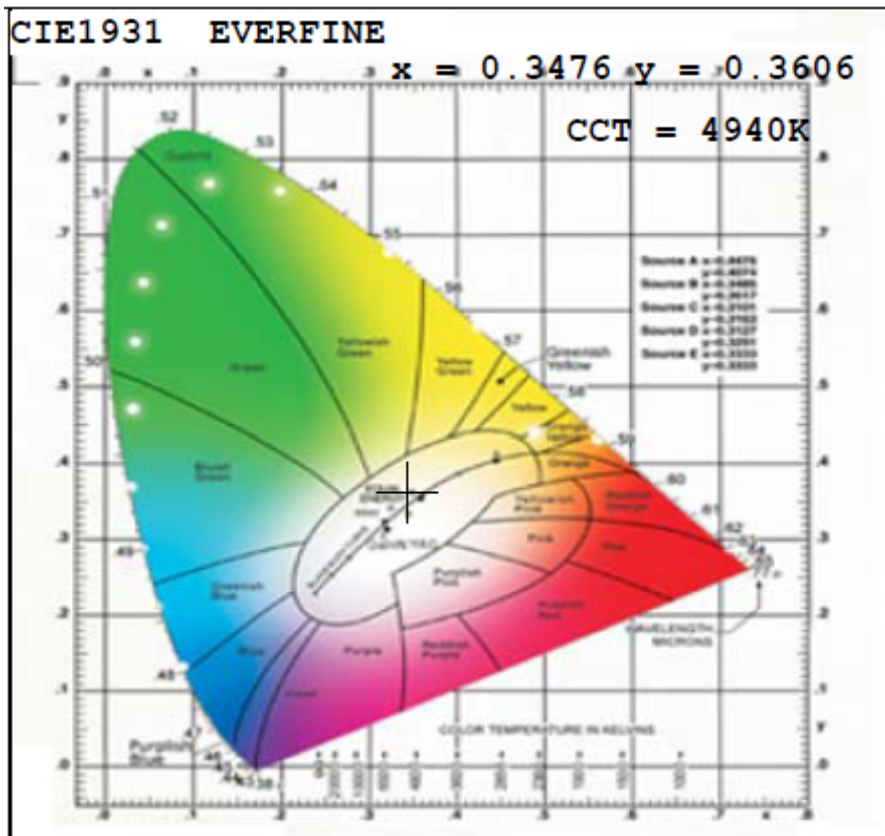
This test report can't be reproduced except in full, without written approval of the laboratory.
And this test report only to the items tested.

1.2.2 Tabulated Spectral Power Distribution (sample No.:001)

WL (nm)	Relative Spectral	Absolute Spectral (mW/nm)	WL (nm)	Relative Spectral	Absolute Spectral (mW/nm)
380	0.0157	0.5867	585	0.717	26.73
385	0.0092	0.3413	590	0.7129	26.57
390	0.0071	0.2639	595	0.7038	26.23
395	0.007	0.2595	600	0.6893	25.69
400	0.0078	0.2922	605	0.6689	24.93
405	0.0099	0.3674	610	0.6471	24.12
410	0.016	0.5958	615	0.6121	22.81
415	0.0313	1.165	620	0.5766	21.49
420	0.058	2.162	625	0.5374	20.03
425	0.0969	3.614	630	0.4978	18.55
430	0.1542	5.749	635	0.456	17
435	0.2374	8.849	640	0.4151	15.47
440	0.3594	13.4	645	0.3751	13.98
445	0.5393	20.1	650	0.3372	12.57
450	0.7837	29.21	655	0.3004	11.2
455	0.9821	36.61	660	0.2662	9.921
460	0.9333	34.79	665	0.2346	8.744
465	0.7203	26.85	670	0.2062	7.684
470	0.5661	21.1	675	0.1804	6.725
475	0.4638	17.29	680	0.1574	5.867
480	0.3849	14.34	685	0.1366	5.091
485	0.3546	13.22	690	0.1186	4.421
490	0.3628	13.52	695	0.1025	3.822
495	0.3905	14.55	700	0.0887	3.306
500	0.4282	15.96	705	0.0764	2.849
505	0.469	17.48	710	0.0662	2.468
510	0.5068	18.89	715	0.0568	2.118
515	0.5369	20.01	720	0.0492	1.835
520	0.5614	20.93	725	0.0426	1.589
525	0.5807	21.64	730	0.0369	1.375
530	0.5989	22.32	735	0.0317	1.183
535	0.6141	22.89	740	0.0274	1.021
540	0.6288	23.44	745	0.0238	0.8869
545	0.643	23.97	750	0.0207	0.7711
550	0.6562	24.46	755	0.0179	0.6654
555	0.6687	24.92	760	0.0158	0.5893
560	0.6821	25.42	765	0.014	0.521
565	0.6923	25.81	770	0.0127	0.4721
570	0.702	26.17	775	0.0116	0.4312
575	0.7104	26.48	780	0.0112	0.4169
580	0.716	26.69			

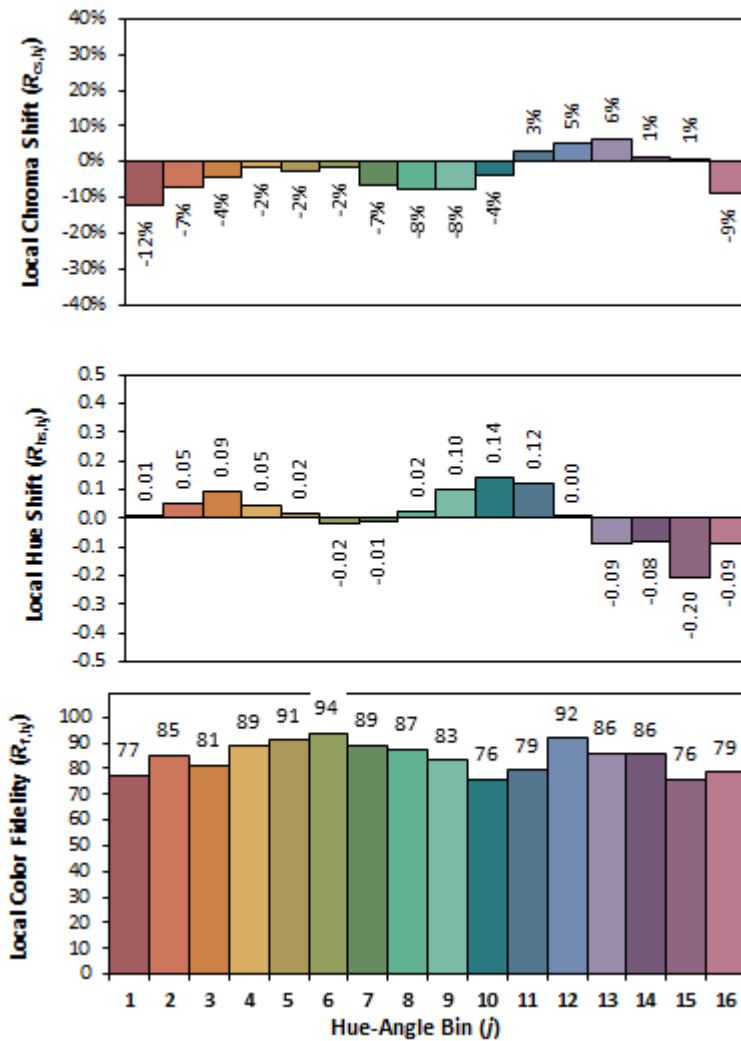
This test report can't be reproduced except in full, without written approval of the laboratory.
And this test report only to the items tested.

1.2.3 CIE Chromaticity Diagram (sample No.:001)



This test report can't be reproduced except in full, without written approval of the laboratory.
And this test report only to the items tested.

1.2.4 The TM-30 value for Color Rendition by Hue-angle bin



1.3 CONCLUSION

The results tabulated in this report are representative of the actual test samples submitted for this report only. The data is provided to the client for further evaluation. Compliance to the referenced specification requirements was not determined in this report.

This test report can't be reproduced except in full, without written approval of the laboratory.
And this test report only to the items tested.

ANNEX 1 PICTURE



Fig.1 View of sample

-----END-----

This test report can't be reproduced except in full, without written approval of the laboratory.
And this test report only to the items tested.