

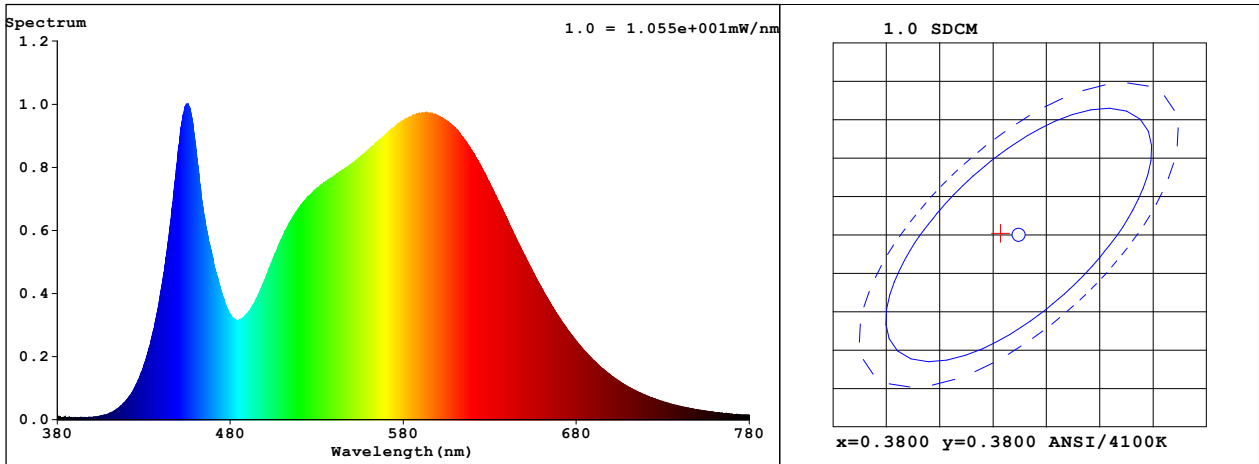
Spectrum Test Report

Sample : Self-ballasted LED lamps Date : 2019-06-06 12:54:15
Specification : A19-6-E26-840-ND Sam. Status : OK
Sample No. : N19LEDGW54501-01 Instrument : HaasSuite(EVERFINE)
Manufacturer : RAB Lighting Inc

Test Condition

Temperature : 24.7Deg RH : 33.0%
WL Range : 380nm-780nm IP : 54102 (83%)
Test Mode : Accuracy Test T : 1696 ms

Spectrum



Spectral Distribution

CIE1931 Chromaticity Diagram

Colorimetric Parameters

Chromaticity Coordinate: $x = 0.3785$ $y = 0.3801$ / $u' = 0.2225$ $v' = 0.5028$ ($duv=1.91e-03$)

CCT= 4075K Prcp WL: Ld=577.6nm Purity=27.7%

Peak WL: Lp=456nm FWHM: =27.9nm Ratio:R=18.0% G=78.2% B=3.7%

Render Index: Ra = 83.3

R1 =82 R2 =90 R3 =95 R4 =82 R5 =81 R6 =85 R7 =87

R8 =66 R9 =13 R10=75 R11=80 R12=61 R13=84 R14=97 R15=76

Photometric & Radiometric Parameters

Flux = 612.21 lm Eff. : 101.57 lm/W Fe = 1.8603 W

Photosynthetic:PPF:8.4571umol/s PAR WATT:1808.3mW(400-700nm)

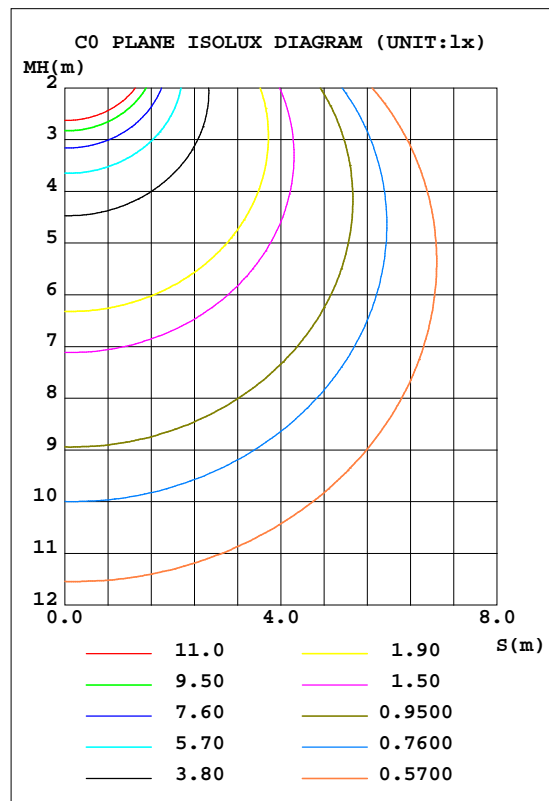
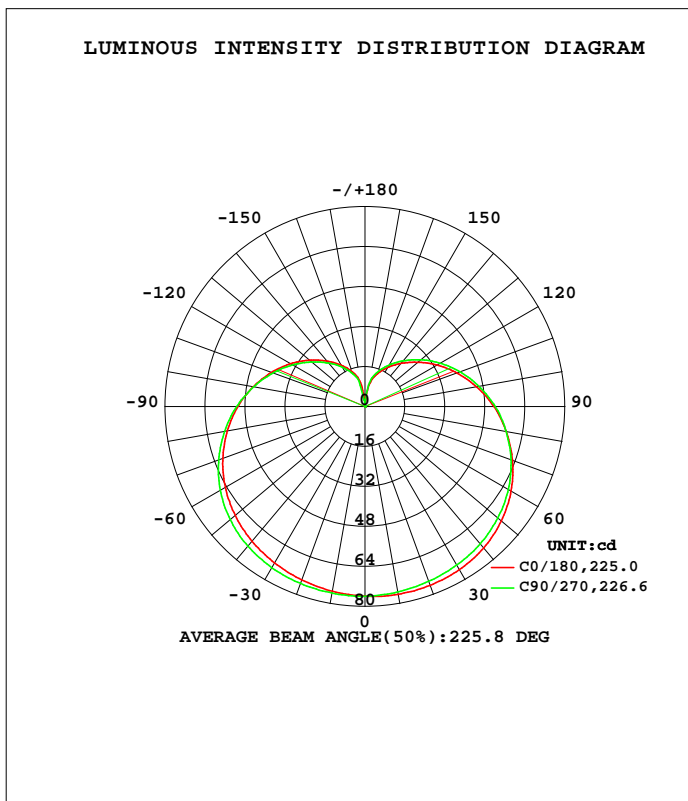
Electrical parameters

V = 120.1 V I = 0.07832 A P = 6.028 W PF = 0.6411

LUMINAIRE PHOTOMETRIC TEST REPORT

Test:U:120.0V I:0.0766A P:5.905W PF:0.6422 Freq:60.01Hz Lamp Flux:618.26x1 lm		
NAME: Self-ballasted LED lamps	TYPE:	WEIGHT:
SPEC.:	DIM.:	SERIAL No.:N19LEDGW54501-01
MFR.: /	SUR.:	Shielding Angle:

DATA OF LAMP		PHOTOMETRIC DATA Eff: 104.70 lm/W			
MODEL	A19-6-E26-840-ND	I _{max} (cd)	76.47	S/MH(C0/180)	1.45
NOMINAL POWER(W)	6	LOR(%)	100.0	S/MH(C90/270)	1.49
RATED VOLTAGE(V)	120	TOTAL FLUX(lm)	618.26	h UP, DN(C0-180)	17.0, 33.3
NOMINAL FLUX(lm)	618.26	CIE CLASS	SEMI-D.	h UP, DN(C180-360)	16.6, 33.2
LAMPS INSIDE	1	h up(%)	33.6	CIBSE SHR NOM	1.75
TEST VOLTAGE(V)		h down(%)	66.4	CIBSE SHR MAX	1.75



C Range: 0 - 360DEG
 C Interval: 22.5DEG
 Test Speed: HIGH
 Temperature:25.2DEG
 Operators:DJQ
 Test Date:2019-06-06

Range: 0 - 180DEG
 Interval: 1.0DEG
 Test System:EVERFINE GO-R5000_V2 SYSTEM V2.0.404.6
 Humidity:46%
 Test Distance:1.809m [K=1.0000]
 Remarks:

ZONAL FLUX DIAGRAM

ZONAL FLUX DIAGRAM:

g	C0	C45	C90	C135	C180	C225	C270	C315	g	F zone	F total	%lum,lamp
10	76.36	76.01	75.32	74.98	75.13	75.55	75.86	76.29	0- 10	7.241	7.241	1.17,1.17
20	76.22	75.46	74.47	73.82	73.94	74.62	75.31	76.20	10- 20	21.36	28.60	4.63,4.63
30	75.40	74.44	73.31	72.37	72.29	73.18	74.57	75.59	20- 30	34.47	63.07	10.2,10.2
40	73.94	72.91	71.76	70.66	70.41	71.36	72.99	74.02	30- 40	45.91	109.0	17.6,17.6
50	71.31	70.50	69.44	68.38	67.82	68.75	70.38	71.33	40- 50	54.99	164.0	26.5,26.5
60	67.49	67.05	66.31	65.25	64.49	65.24	66.86	67.68	50- 60	61.03	225.0	36.4,36.4
70	62.81	62.76	62.15	61.24	60.58	60.87	62.27	63.00	60- 70	63.68	288.7	46.7,46.7
80	57.42	57.62	57.43	56.71	55.93	56.03	56.97	57.51	70- 80	62.93	351.6	56.9,56.9
90	51.63	51.98	52.19	51.76	50.89	50.73	51.38	51.60	80- 90	59.20	410.8	66.4,66.4
100	45.48	45.97	46.41	46.17	45.52	45.08	45.32	45.30	90-100	53.03	463.8	75,75
110	39.28	39.90	40.62	40.44	39.95	39.44	39.28	39.08	100-110	45.20	509.0	82.3,82.3
120	33.28	34.02	34.79	34.77	34.33	33.74	33.44	33.08	110-120	36.60	545.7	88.3,88.3
130	27.66	28.44	29.19	29.29	28.88	28.35	27.82	27.52	120-130	27.99	573.6	92.8,92.8
140	22.60	23.28	23.92	24.12	23.77	23.29	22.77	22.46	130-140	20.04	593.7	96,96
150	18.05	18.59	19.20	19.39	19.19	18.74	18.23	17.96	140-150	13.22	606.9	98.2,98.2
160	13.63	14.14	14.66	14.89	14.76	14.41	13.86	13.56	150-160	7.672	614.6	99.4,99.4
170	7.719	8.331	8.832	9.132	8.798	7.333	3.003	7.358	160-170	3.340	617.9	99.9,99.9
180	0.0023	0.0022	0.0023	0.0022	0.0022	0.0022	0.0022	0.0025	170-180	0.3410	618.3	100,100
DEG	LUMINOUS INTENSITY:cd									UNIT:lm		

Conical surface Flux(90deg): 135.52 lm

%lum = 21.9%
 %lamp = 21.9%

Conical surface Flux(120deg): 225 lm

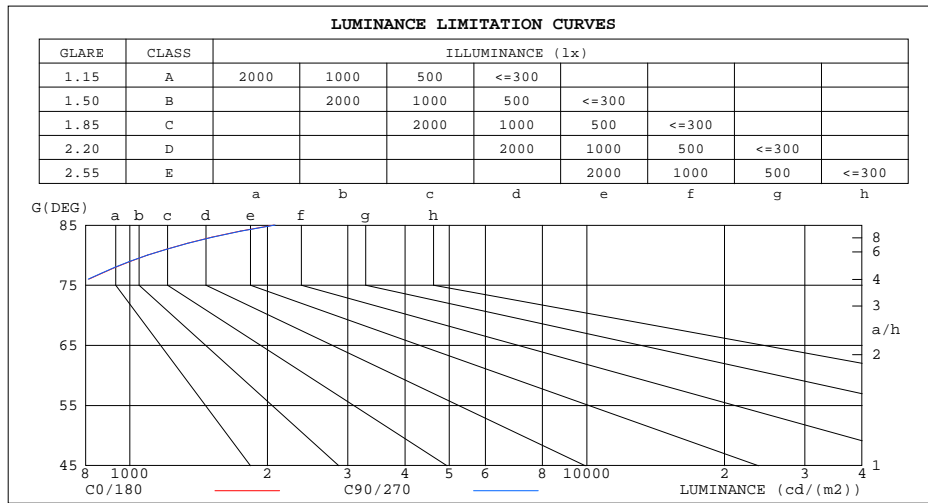
%lum = 36.4%
 %lamp = 36.4%

C Range: 0 - 360DEG
 C Interval: 22.5DEG
 Test Speed: HIGH
 Temperature:25.2DEG
 Operators:DJQ
 Test Date:2019-06-06

g Range: 0 - 180DEG
 Interval: 1.0DEG
 Test System:EVERFINE GO-R5000_V2 SYSTEM V2.0.404.6
 Humidity:46%
 Test Distance:1.809m [K=1.0000]
 Remarks:

LUMINANCE LIMITATION CURVES

Test:U:120.0V I:0.0766A P:5.905W PF:0.6422 Freq:60.01Hz Lamp Flux:618.26x1 lm		
NAME: Self-ballasted LED lamps	TYPE:	WEIGHT:
SPEC.:	DIM.:	SERIAL No.:N19LEDGW54501-01
MFR.: /	SUR.:	Shielding Angle:



LUMINANCE cd/(m2)		
G(DEG)	C0/180	C90/270
85	2068	2081
80	1093	1093
75	768	764
70	607	601
65	510	503
60	446	438
55	401	392
50	367	357
45	340	330

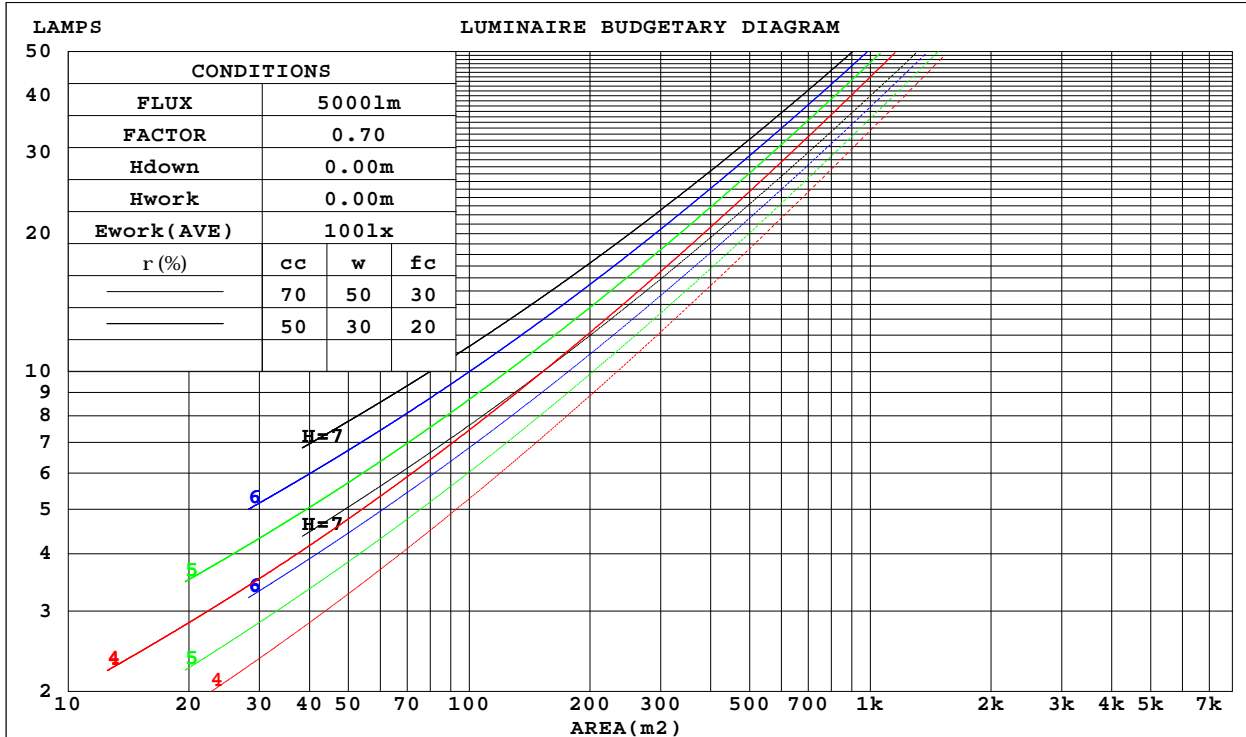
C Range: 0 - 360DEG
 C Interval: 22.5DEG
 Test Speed: HIGH
 Temperature:25.2DEG
 Operators:DJQ
 Test Date:2019-06-06

G Range: 0 - 180DEG
 Interval: 1.0DEG
 Test System:EVERFINE GO-R5000_V2 SYSTEM V2.0.404.6
 Humidity:46%
 Test Distance:1.809m [K=1.0000]
 Remarks:

CU AND LUMINAIRE BUDGETARY ESTIMATE DIAGRAM

Test:U:120.0V I:0.0766A P:5.905W PF:0.6422 Freq:60.01Hz Lamp Flux:618.26x1 lm		
NAME: Self-ballasted LED lamps	TYPE:	WEIGHT:
SPEC.:	DIM.:	SERIAL No.:N19LEDGW54501-01
MFR.: /	SUR.:	Shielding Angle:

r _{cc}	80%			70%			50%			30%			10%			0
r _w	50%	30%	10%	50%	30%	10%	50%	30%	10%	50%	30%	10%	50%	30%	10%	0
r _{fc}	20%			20%			20%			20%			20%			0
RCR	RCR:Room Cavity Ratio						Coefficients of Utilization(CU)									
0.0	1.11	1.11	1.11	1.05	1.05	1.05	.92	.92	.92	.81	.81	.81	.71	.71	.71	.66
1.0	.90	.85	.79	.85	.80	.75	.74	.70	.66	.65	.61	.58	.56	.53	.51	.46
2.0	.76	.68	.61	.72	.64	.58	.63	.57	.52	.54	.49	.45	.46	.43	.40	.35
3.0	.66	.57	.49	.62	.53	.46	.54	.47	.41	.46	.41	.36	.40	.35	.32	.28
4.0	.57	.48	.40	.54	.45	.38	.47	.40	.34	.41	.35	.30	.35	.30	.26	.23
5.0	.51	.41	.34	.48	.39	.32	.42	.34	.29	.36	.30	.25	.31	.26	.22	.19
6.0	.45	.36	.29	.42	.34	.27	.37	.30	.25	.32	.26	.22	.28	.23	.19	.16
7.0	.41	.31	.25	.38	.30	.24	.33	.26	.21	.29	.23	.19	.25	.20	.17	.14
8.0	.37	.28	.22	.35	.26	.21	.30	.24	.19	.27	.21	.17	.23	.18	.15	.12
9.0	.33	.25	.19	.31	.24	.18	.28	.21	.17	.24	.19	.15	.21	.16	.13	.11
10.0	.31	.23	.17	.29	.21	.16	.26	.19	.15	.22	.17	.13	.20	.15	.12	.10



C Range: 0 - 360DEG
 C Interval: 22.5DEG
 Test Speed: HIGH
 Temperature:25.2DEG
 Operators:DJQ
 Test Date:2019-06-06

Range: 0 - 180DEG
 Interval: 1.0DEG
 Test System:EVERFINE GO-R5000_V2 SYSTEM V2.0.404.6
 Humidity:46%
 Test Distance:1.809m [K=1.0000]
 Remarks:

WEC AND CCEC

Test:U:120.0V I:0.0766A P:5.905W PF:0.6422 Freq:60.01Hz Lamp Flux:618.26x1 lm		
NAME: Self-ballasted LED lamps	TYPE:	WEIGHT:
SPEC.:	DIM.:	SERIAL No.:N19LEDGW54501-01
MFR.: /	SUR.:	Shielding Angle:

rcc	80%			70%			50%			30%			10%			0
rw	50%	30%	10%	50%	30%	10%	50%	30%	10%	50%	30%	10%	50%	30%	10%	0
rfc	20%			20%			20%			20%			20%			0
RCR	RCR:Room Cavity Ratio						Wall Exitance Coefficients(WEC)									
0.0																
1.0	.414	.236	.075	.397	.226	.072	.364	.209	.067	.334	.193	.062	.306	.177	.057	
2.0	.348	.191	.059	.332	.183	.056	.303	.168	.052	.275	.154	.048	.250	.141	.045	
3.0	.305	.162	.049	.290	.155	.047	.263	.143	.043	.238	.130	.040	.215	.119	.037	
4.0	.272	.141	.041	.258	.135	.040	.234	.124	.037	.211	.113	.034	.189	.103	.031	
5.0	.245	.125	.036	.233	.120	.035	.210	.110	.032	.189	.100	.030	.170	.091	.027	
6.0	.224	.112	.032	.213	.107	.031	.192	.098	.029	.172	.089	.026	.154	.081	.024	
7.0	.205	.102	.029	.195	.097	.028	.176	.089	.026	.158	.081	.024	.141	.073	.022	
8.0	.190	.093	.026	.181	.089	.025	.163	.081	.023	.146	.074	.021	.130	.067	.019	
9.0	.177	.085	.024	.168	.082	.023	.151	.075	.021	.136	.068	.019	.121	.062	.018	
10.0	.165	.079	.022	.157	.076	.021	.141	.069	.020	.127	.063	.018	.113	.057	.016	

rcc	80%			70%			50%			30%			10%			0
rw	50%	30%	10%	50%	30%	10%	50%	30%	10%	50%	30%	10%	50%	30%	10%	0
rfc	20%			20%			20%			20%			20%			0
RCR	RCR:Room Cavity Ratio						Ceiling Cavity Exitance Coefficients(CCEC)									
0.0	.446	.446	.446	.381	.381	.381	.260	.260	.260	.149	.149	.149	.048	.048	.048	
1.0	.445	.413	.384	.381	.354	.330	.261	.244	.228	.150	.141	.133	.048	.045	.043	
2.0	.439	.391	.351	.376	.337	.303	.258	.233	.211	.149	.135	.124	.048	.044	.040	
3.0	.432	.375	.330	.370	.324	.286	.254	.225	.201	.147	.131	.118	.047	.043	.039	
4.0	.424	.364	.317	.364	.314	.275	.250	.219	.194	.145	.128	.115	.047	.042	.038	
5.0	.417	.354	.308	.358	.306	.268	.247	.214	.189	.143	.126	.112	.046	.041	.037	
6.0	.409	.347	.301	.352	.300	.263	.243	.210	.186	.141	.124	.110	.045	.040	.036	
7.0	.402	.340	.297	.346	.295	.259	.239	.207	.183	.139	.122	.109	.045	.040	.036	
8.0	.396	.335	.293	.341	.290	.256	.236	.204	.181	.137	.120	.108	.044	.039	.036	
9.0	.389	.330	.290	.335	.287	.253	.232	.201	.180	.135	.119	.107	.044	.039	.036	
10.0	.384	.326	.288	.331	.283	.251	.229	.199	.179	.134	.118	.107	.043	.039	.035	

C Range: 0 - 360DEG
 C Interval: 22.5DEG
 Test Speed: HIGH
 Temperature:25.2DEG
 Operators:DJQ
 Test Date:2019-06-06

g Range: 0 - 180DEG
 g Interval: 1.0DEG
 Test System:EVERFINE GO-R5000_V2 SYSTEM V2.0.404.6
 Humidity:46%
 Test Distance:1.809m [K=1.0000]
 Remarks:

UGR(Unified Glare Rating) Table

Test:U:120.0V I:0.0766A P:5.905W PF:0.6422 Freq:60.01Hz Lamp Flux:618.26x1 lm										
NAME: Self-ballasted LED lamps					TYPE:			WEIGHT:		
SPEC.:					DIM.:			SERIAL No.:N19LEDGW54501-01		
MFR.: /					SUR.:			Shielding Angle:		
ceiling/cavity	0.7	0.7	0.5	0.5	0.3	0.7	0.7	0.5	0.5	0.3
walls	0.5	0.3	0.5	0.3	0.3	0.5	0.3	0.5	0.3	0.3
working plane	0.2	0.2	0.2	0.2	0.2	0.2	0.2	0.2	0.2	0.2
Room dimensions	Viewed crosswise					Viewed endwise				
x = 2H y = 2H	9.4	10.6	10.1	11.4	12.2	9.3	10.6	10.0	11.3	12.1
3H	12.3	13.4	13.0	14.2	15.1	12.2	13.3	12.9	14.1	15.0
4H	13.9	15.0	14.6	15.7	16.6	13.8	14.9	14.6	15.7	16.6
6H	15.7	16.7	16.4	17.4	18.4	15.6	16.6	16.4	17.4	18.4
8H	16.6	17.6	17.4	18.4	19.4	16.6	17.6	17.4	18.4	19.3
12H	17.8	18.7	18.5	19.5	20.5	17.8	18.7	18.5	19.5	20.5
4H 2H	10.3	11.4	11.0	12.1	13.1	10.2	11.3	11.0	12.1	13.0
3H	13.3	14.3	14.1	15.1	16.1	13.3	14.2	14.1	15.0	16.0
4H	15.1	16.0	15.9	16.8	17.8	15.1	15.9	15.8	16.7	17.7
6H	17.0	17.8	17.9	18.7	19.7	17.0	17.8	17.8	18.6	19.6
8H	18.1	18.8	18.9	19.7	20.7	18.1	18.8	18.9	19.7	20.7
12H	19.4	20.0	20.2	20.9	21.9	19.4	20.0	20.2	20.9	21.9
8H 4H	15.7	16.5	16.6	17.3	18.4	15.7	16.4	16.5	17.3	18.3
6H	18.0	18.6	18.8	19.5	20.5	17.9	18.6	18.8	19.4	20.5
8H	19.2	19.8	20.1	20.7	21.8	19.2	19.8	20.1	20.7	21.8
12H	20.7	21.2	21.6	22.1	23.2	20.7	21.2	21.6	22.1	23.2
12H 4H	15.9	16.6	16.8	17.5	18.5	15.9	16.6	16.7	17.4	18.5
6H	18.3	18.8	19.1	19.7	20.8	18.2	18.8	19.1	19.7	20.8
8H	19.6	20.1	20.5	21.0	22.1	19.6	20.1	20.5	21.0	22.1
Variations with the observer position at spacings:										
S = 1.0H	+ 0.1 / - 0.1					+ 0.1 / - 0.1				
1.5H	+ 0.2 / - 0.3					+ 0.2 / - 0.3				
2.0H	+ 0.3 / - 0.4					+ 0.3 / - 0.4				

CIE Pub.117, 618.3 lm Total Lamp Luminous Flux Correct (8log(F/F0) = -1.7)

C Range: 0 - 360DEG
 C Interval: 22.5DEG
 Test Speed: HIGH
 Temperature:25.2DEG
 Operators:DJQ
 Test Date:2019-06-06

g Range: 0 - 180DEG
 Interval: 1.0DEG
 Test System:EVERFINE GO-R5000_V2 SYSTEM V2.0.404.6
 Humidity:46%
 Test Distance:1.809m [K=1.0000]
 Remarks:

UTILIZATION FACTORS TABLE

Test:U:120.0V I:0.0766A P:5.905W PF:0.6422 Freq:60.01Hz Lamp Flux:618.26x1 lm		
NAME: Self-ballasted LED lamps	TYPE:	WEIGHT:
SPEC.:	DIM.:	SERIAL No.:N19LEDGW54501-01
MFR.: /	SUR.:	Shielding Angle:

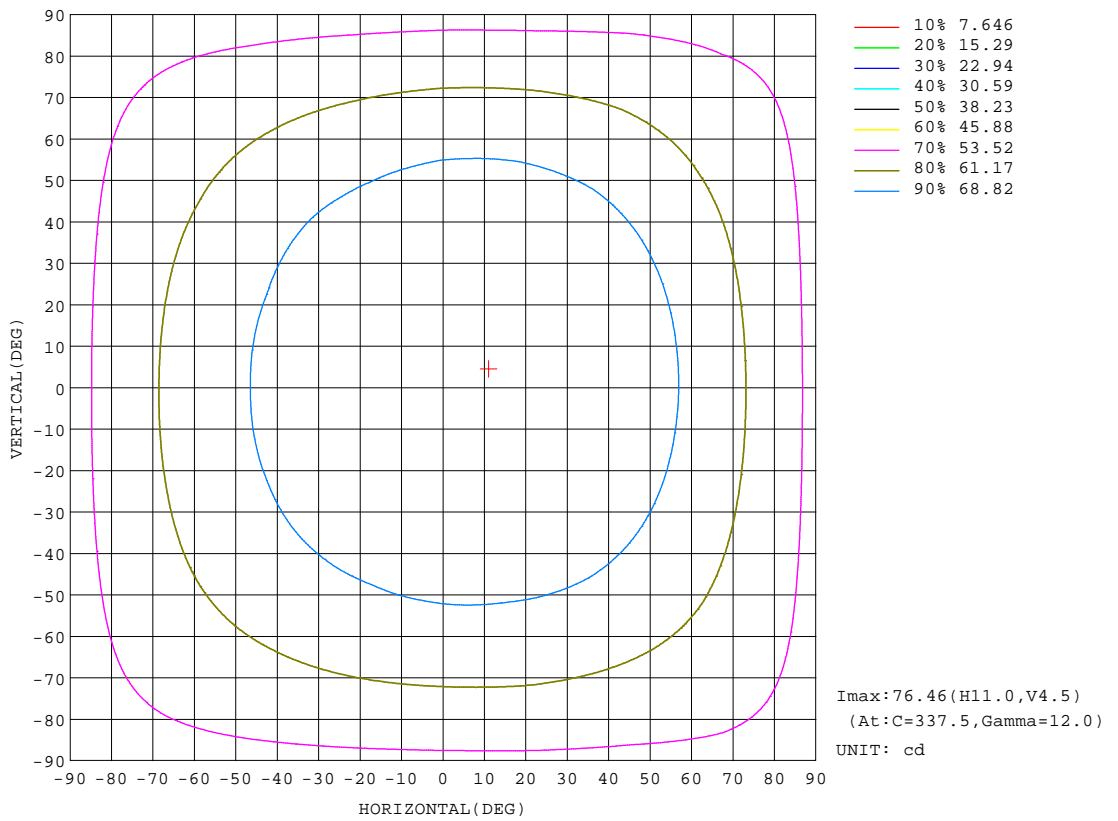
REFLECTANCE										
Ceiling	0.8	0.8	0.8	0.7	0.7	0.7	0.5	0.5	0.5	0
Walls	0.7	0.5	0.3	0.7	0.5	0.3	0.7	0.5	0.3	0
Working plane	0.2	0.2	0.2	0.2	0.2	0.2	0.2	0.2	0.2	0
ROOM INDEX	UTILIZATION FACTORS(PERCENT) $k(RI) \times RCR = 5$									
k = 0.60	41	28	21	39	27	20	37	26	20	13
0.80	50	36	28	47	35	27	44	33	26	17
1.00	57	43	34	54	42	33	50	41	31	21
1.25	64	50	41	61	48	39	55	44	37	25
1.50	69	56	46	65	53	45	59	49	41	29
2.00	77	64	55	72	61	53	65	56	49	34
2.50	82	70	61	77	67	59	69	60	54	37
3.00	86	75	66	81	71	64	72	64	58	40
4.00	91	82	74	85	77	70	76	69	64	45
5.00	94	86	79	88	81	75	78	73	68	48
ROOM INDEX	UF(total)									Direct
According to DIN EN 13032-2 2004			Suspended				SHRNOM = 1.25			

C Range: 0 - 360DEG
 C Interval: 22.5DEG
 Test Speed: HIGH
 Temperature:25.2DEG
 Operators:DJQ
 Test Date:2019-06-06

g Range: 0 - 180DEG
 Interval: 1.0DEG
 Test System:EVERFINE GO-R5000_V2 SYSTEM V2.0.404.6
 Humidity:46%
 Test Distance:1.809m [K=1.0000]
 Remarks:

ISOCANDELA DIAGRAM

Test:U:120.0V I:0.0766A P:5.905W PF:0.6422 Freq:60.01Hz Lamp Flux:618.26x1 lm		
NAME: Self-ballasted LED lamps	TYPE:	WEIGHT:
SPEC.:	DIM.:	SERIAL No.:N19LEDGW54501-01
MFR.: /	SUR.:	Shielding Angle:



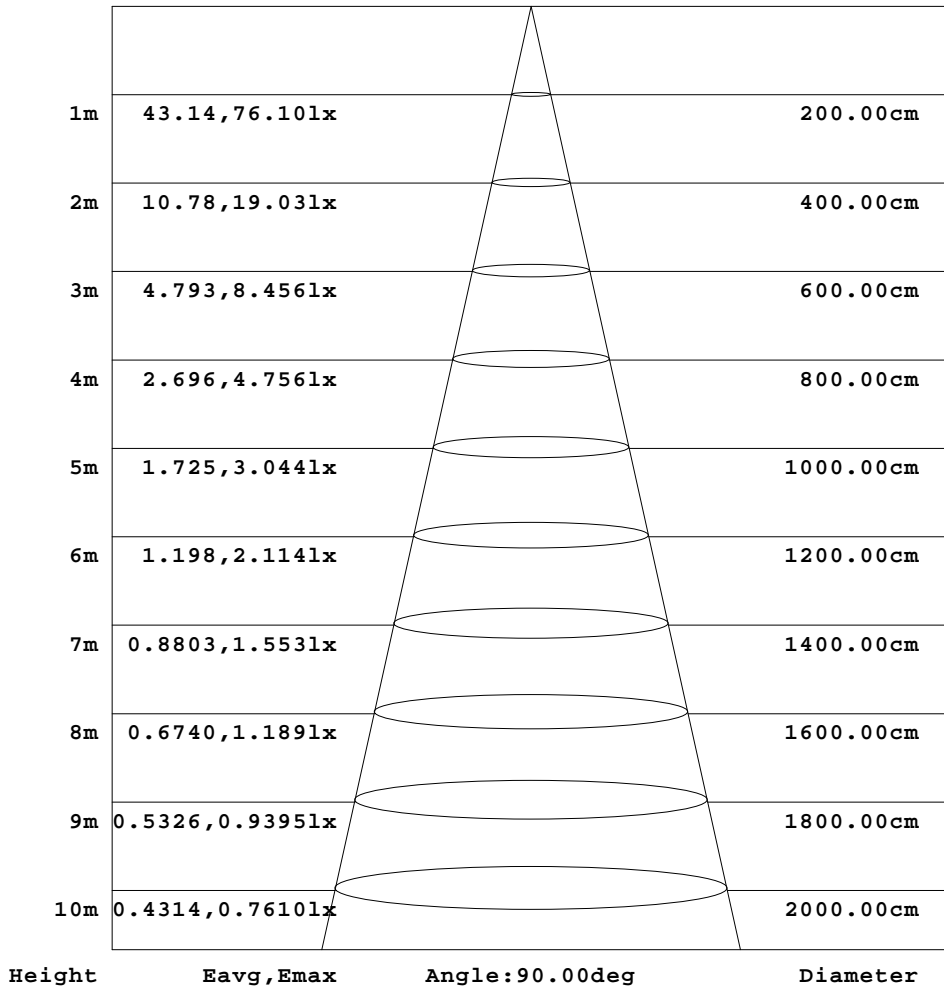
C Range: 0 - 360DEG
 C Interval: 22.5DEG
 Test Speed: HIGH
 Temperature:25.2DEG
 Operators:DJQ
 Test Date:2019-06-06

Range: 0 - 180DEG
 Interval: 1.0DEG
 Test System:EVERFINE GO-R5000_V2 SYSTEM V2.0.404.6
 Humidity:46%
 Test Distance:1.809m [K=1.0000]
 Remarks:

AAI Figure

Test:U:120.0V I:0.0766A P:5.905W PF:0.6422 Freq:60.01Hz Lamp Flux:618.26x1 lm		
NAME: Self-ballasted LED lamps	TYPE:	WEIGHT:
SPEC.:	DIM.:	SERIAL No.:N19LEDGW54501-01
MFR.: /	SUR.:	Shielding Angle:

Flux out:135.5 lm



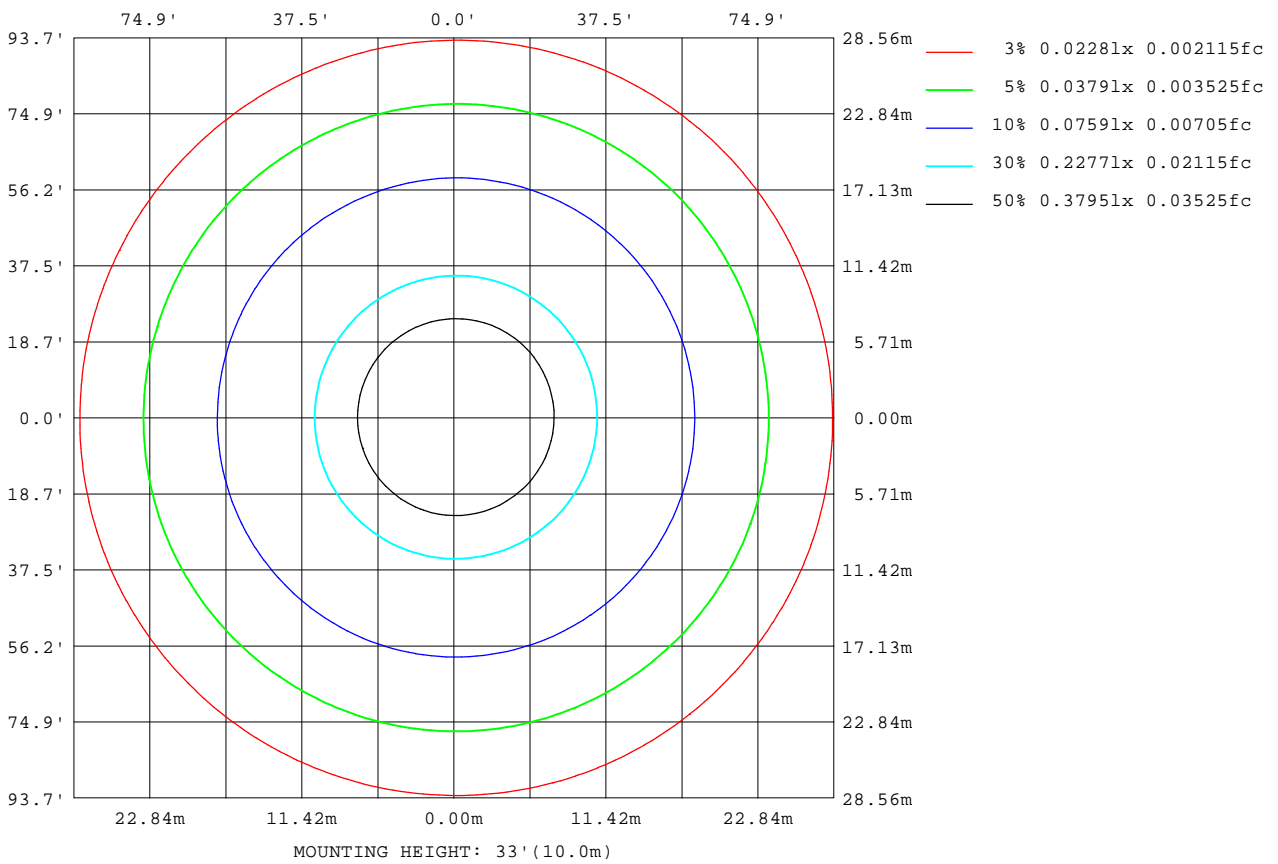
Note:The Curves indicate the illuminated area and the average illumination when the luminaire is at different distance.

C Range: 0 - 360DEG
 C Interval: 22.5DEG
 Test Speed: HIGH
 Temperature:25.2DEG
 Operators:DJQ
 Test Date:2019-06-06

Range: 0 - 180DEG
 Interval: 1.0DEG
 Test System:EVERFINE GO-R5000_V2 SYSTEM V2.0.404.6
 Humidity:46%
 Test Distance:1.809m [K=1.0000]
 Remarks:

ISOLUX DIAGRAM

Test:U:120.0V I:0.0766A P:5.905W PF:0.6422 Freq:60.01Hz Lamp Flux:618.26x1 lm		
NAME: Self-ballasted LED lamps	TYPE:	WEIGHT:
SPEC.:	DIM.:	SERIAL No.:N19LEDGW54501-01
MFR.: /	SUR.:	Shielding Angle:



C Range: 0 - 360DEG
 C Interval: 22.5DEG
 Test Speed: HIGH
 Temperature:25.2DEG
 Operators:DJQ
 Test Date:2019-06-06

Range: 0 - 180DEG
 Interval: 1.0DEG
 Test System:EVERFINE GO-R5000_V2 SYSTEM V2.0.404.6
 Humidity:46%
 Test Distance:1.809m [K=1.0000]
 Remarks:

LED Avg.L Report

Test:U:120.0V I:0.0766A P:5.905W PF:0.6422 Freq:60.01Hz Lamp Flux:618.26x1 lm		
NAME: Self-ballasted LED lamps	TYPE:	WEIGHT:
SPEC.:	DIM.:	SERIAL No.:N19LEDGW54501-01
MFR.: /	SUR.:	Shielding Angle:

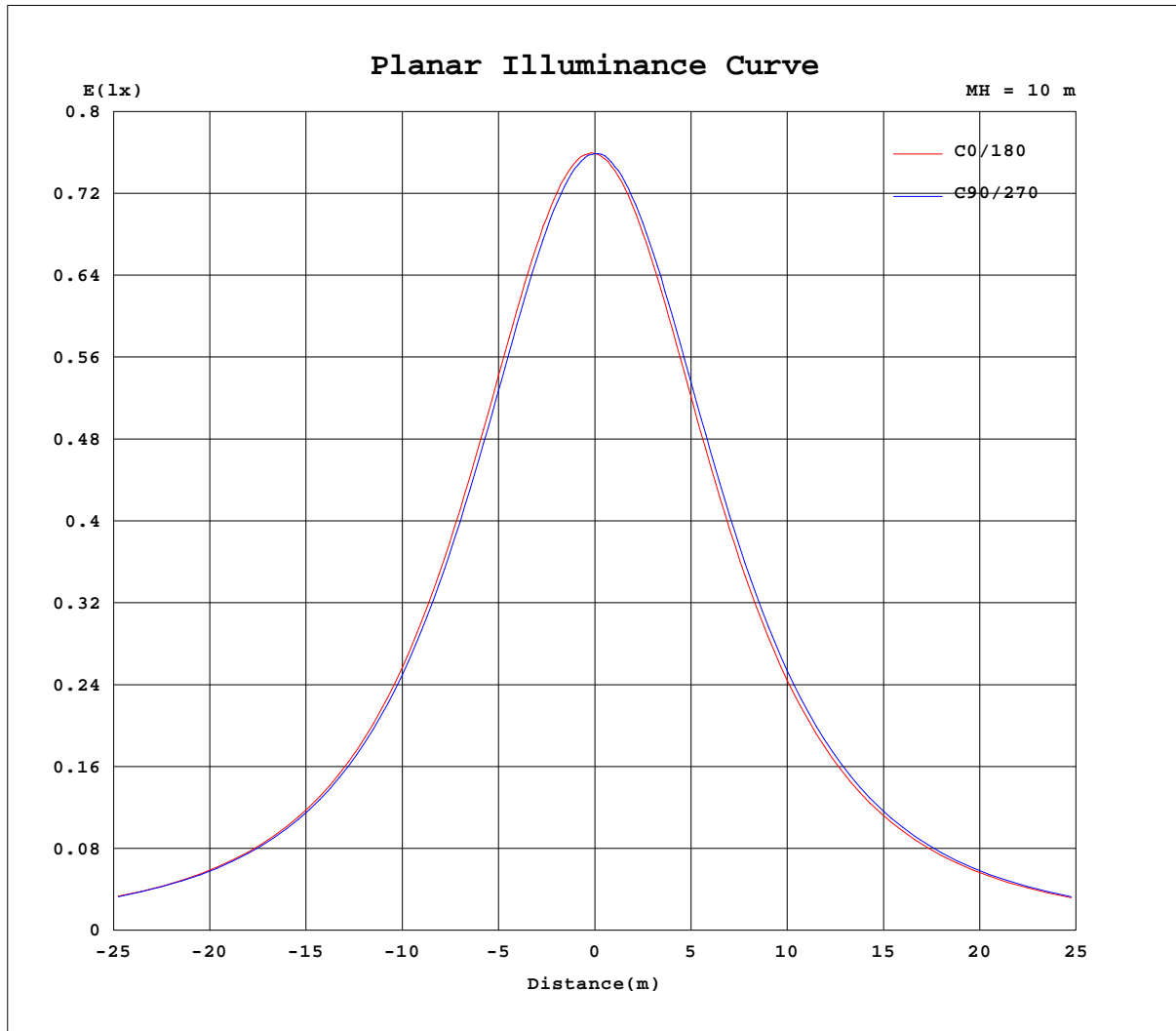
AvgL	cd/m2
L_0~180(65)av	500
L_0~180(75)av	756
L_0~180(85)av	2047
L_90~270(65)av	505
L_90~270(75)av	763
L_90~270(85)av	2068
L_45(65)av	503
L_45(75)av	761
L_45(85)av	2058

Standard: GB/T 29293-2012

C Range: 0 - 360DEG
C Interval: 22.5DEG
Test Speed: HIGH
Temperature:25.2DEG
Operators:DJQ
Test Date:2019-06-06

Range: 0 - 180DEG
Interval: 1.0DEG
Test System:EVERFINE GO-R5000_V2 SYSTEM V2.0.404.6
Humidity:46%
Test Distance:1.809m [K=1.0000]
Remarks:

Planar Illuminance Curve



C Range: 0 - 360DEG
 C Interval: 22.5DEG
 Test Speed: HIGH
 Temperature: 25.2DEG
 Operators: DJQ
 Test Date: 2019-06-06

Page Range: 0 - 180DEG
 Interval: 1.0DEG
 Test System: EVERFINE GO-R5000_V2 SYSTEM V2.0.404.6
 Humidity: 46%
 Test Distance: 1.809m [K=1.0000]
 Remarks:

LUMINOUS DISTRIBUTION INTENSITY DATA

Test:U:120.0V I:0.0766A P:5.905W PF:0.6422 Freq:60.01Hz Lamp Flux:618.26x1 lm		
NAME: Self-ballasted LED lamps	TYPE:	WEIGHT:
SPEC.:	DIM.:	SERIAL No.:N19LEDGW54501-01
MFR.: /	SUR.:	Shielding Angle:

Table--1

UNIT: cd

C(DEG) g (DEG)	0	22.5	45	67.5	90	112.5	135	157.5	180	202.5	225	247.5	270	292.5	315	337.5			
0	75.9	76.1	76.0	76.0	75.9	76.0	75.9	76.0	75.9	76.1	76.0	76.0	75.9	76.0	75.9	76.0			
5	76.2	76.2	76.1	76.0	75.7	75.8	75.5	75.6	75.5	75.7	75.8	76.0	75.9	76.3	76.2	76.3			
10	76.4	76.3	76.0	75.8	75.3	75.4	75.0	75.1	75.1	75.2	75.6	75.8	75.9	76.3	76.3	76.4			
15	76.4	76.1	75.8	75.5	74.9	74.8	74.4	74.6	74.6	74.6	75.1	75.4	75.6	76.2	76.3	76.4			
20	76.2	76.0	75.5	75.1	74.5	74.2	73.8	73.8	73.9	74.0	74.6	74.9	75.3	76.0	76.2	76.3			
25	75.9	75.6	75.1	74.5	73.9	73.6	73.1	73.1	73.2	73.3	74.0	74.4	75.0	75.6	76.0	76.1			
30	75.4	75.1	74.4	73.9	73.3	72.9	72.4	72.2	72.3	72.6	73.2	73.8	74.6	75.2	75.6	75.6			
35	74.8	74.4	73.7	73.2	72.6	72.1	71.6	71.4	71.4	71.7	72.3	73.0	73.8	74.5	74.9	74.9			
40	73.9	73.4	72.9	72.2	71.8	71.2	70.7	70.4	70.4	70.7	71.4	72.1	73.0	73.7	74.0	73.9			
45	72.8	72.3	71.8	71.1	70.7	70.1	69.6	69.4	69.2	69.4	70.2	70.9	71.8	72.5	72.8	72.8			
50	71.3	70.9	70.5	69.9	69.4	68.8	68.4	68.1	67.8	67.9	68.7	69.5	70.4	71.1	71.3	71.3			
55	69.5	69.3	69.0	68.4	68.0	67.3	66.9	66.5	66.2	66.3	67.1	67.7	68.8	69.4	69.6	69.5			
60	67.5	67.4	67.1	66.6	66.3	65.7	65.2	64.8	64.5	64.6	65.2	65.8	66.9	67.4	67.7	67.5			
65	65.3	65.2	65.0	64.7	64.3	63.8	63.4	63.0	62.6	62.6	63.1	63.7	64.7	65.2	65.5	65.2			
70	62.8	62.9	62.8	62.6	62.2	61.7	61.2	60.9	60.6	60.6	60.9	61.4	62.3	62.8	63.0	62.7			
75	60.2	60.4	60.3	60.2	59.8	59.5	59.1	58.7	58.3	58.3	58.5	59.0	59.7	60.1	60.3	60.0			
80	57.4	57.7	57.6	57.7	57.4	57.1	56.7	56.4	55.9	55.9	56.0	56.5	57.0	57.2	57.5	57.3			
85	54.5	54.9	54.8	55.0	54.9	54.6	54.3	53.9	53.4	53.4	53.4	53.8	54.2	54.3	54.6	54.3			
90	51.6	52.0	52.0	52.3	52.2	52.0	51.8	51.4	50.9	50.9	50.7	51.0	51.4	51.4	51.6	51.3			
95	48.6	48.9	49.0	49.3	49.3	49.2	49.0	48.7	48.2	48.1	47.9	48.0	48.4	48.3	48.4	48.2			
100	45.5	45.8	46.0	46.4	46.4	46.4	46.2	45.9	45.5	45.3	45.1	45.2	45.3	45.2	45.3	45.1			
105	42.4	42.7	42.9	43.4	43.5	43.5	43.3	43.1	42.7	42.5	42.3	42.2	42.3	42.2	42.2	42.1			
110	39.3	39.7	39.9	40.5	40.6	40.6	40.4	40.3	39.9	39.7	39.4	39.3	39.3	39.1	39.1	39.0			
115	36.2	36.7	36.9	37.5	37.7	37.8	37.6	37.5	37.1	36.8	36.5	36.3	36.4	36.1	36.0	36.0			
120	33.3	33.8	34.0	34.6	34.8	34.9	34.8	34.7	34.3	34.0	33.7	33.4	33.4	33.2	33.1	33.1			
125	30.4	30.9	31.2	31.7	32.0	32.1	32.0	31.9	31.6	31.2	31.0	30.7	30.6	30.4	30.2	30.3			
130	27.7	28.1	28.4	29.0	29.2	29.3	29.3	29.2	28.9	28.5	28.3	28.0	27.8	27.7	27.5	27.5			
135	25.1	25.5	25.8	26.3	26.5	26.7	26.6	26.6	26.3	26.0	25.8	25.4	25.2	25.1	24.9	24.9			
140	22.6	23.0	23.3	23.7	23.9	24.1	24.1	24.0	23.8	23.5	23.3	23.0	22.8	22.6	22.5	22.5			
145	20.3	20.6	20.9	21.3	21.5	21.7	21.7	21.6	21.4	21.1	20.9	20.6	20.5	20.2	20.2	20.2			
150	18.0	18.3	18.6	18.9	19.2	19.4	19.4	19.4	19.2	18.9	18.7	18.4	18.2	18.0	18.0	17.9			
155	15.8	16.1	16.4	16.7	16.9	17.1	17.1	17.1	17.0	16.7	16.5	16.3	16.0	15.8	15.7	15.7			
160	13.6	13.8	14.1	14.4	14.7	14.8	14.9	14.9	14.8	14.6	14.4	13.7	13.9	13.3	13.6	13.5			
165	11.4	11.5	11.9	12.2	12.4	12.6	12.6	12.6	12.5	12.3	12.0	10.6	11.6	8.96	11.0	11.3			
170	7.72	7.74	8.33	8.66	8.83	9.16	9.13	8.94	8.80	8.52	7.33	5.61	3.00	6.30	7.36	7.55			
175	0.03	0.11	0.27	0.49	0.90	1.17	1.11	1.00	0.39	0.20	0.03	0.01	0.00	0.01	0.01	0.01			
180	0.00	0.00	0.00	0.00	0.00	0.00	0.00	0.00	0.00	0.00	0.00	0.00	0.00	0.00	0.00	0.00			

C Range: 0 - 360DEG
 C Interval: 22.5DEG
 Test Speed: HIGH
 Temperature:25.2DEG
 Operators:DJQ
 Test Date:2019-06-06

g Range: 0 - 180DEG
 Interval: 1.0DEG
 Test System:EVERFINE GO-R5000_V2 SYSTEM V2.0.404.6
 Humidity:46%
 Test Distance:1.809m [K=1.0000]
 Remarks: