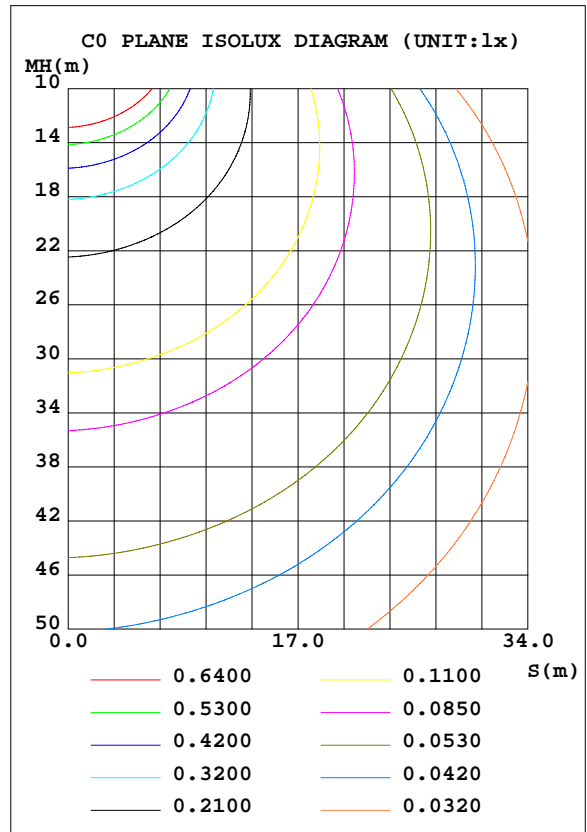
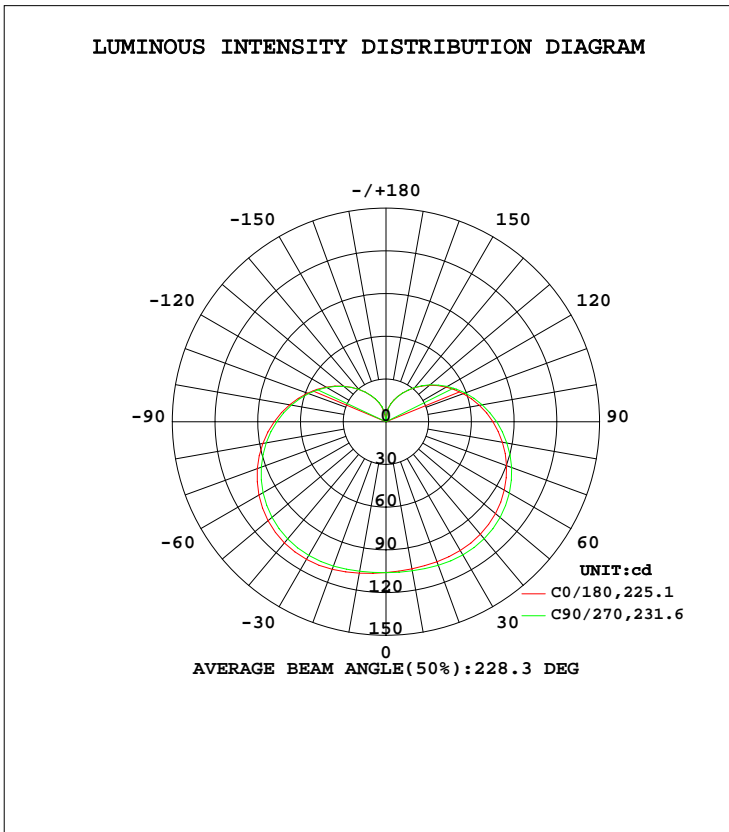


EVERFINE GONIOPHOTOMETERS SYSTEM TEST REPORT

LUMINAIRE PHOTOMETRIC TEST REPORT

Test:U:120.0V I:0.1038A P:9.537W PF:0.7661 Freq:59.98Hz Lamp Flux:906.77lx1 lm		
NAME: A19-9-GU24-850-DIM	TYPE:LED	WEIGHT:
SPEC.:120V/9.5W/800LM	DIM.:	SERIAL No.:A1811961C001
MFR.: RAB LIGHTING INC	SUR.:	Shielding Angle:

DATA OF LAMP		PHOTOMETRIC DATA Eff: 95.08 lm/W			
MODEL		Imax(cd)	111.7	S/MH(C0/180)	1.60
NOMINAL POWER(W)	9.5	LOR(%)	100.0	S/MH(C90/270)	1.56
RATED VOLTAGE(V)	120	TOTAL FLUX(lm)	906.77	η UP, DN(C0-180)	16.5, 33.6
NOMINAL FLUX(lm)	906.771	CIE CLASS	SEMI-D.	η UP, DN(C180-360)	16.1, 33.8
LAMPS INSIDE	1	η up(%)	32.6	CIBSE SHR NOM	1.75
TEST VOLTAGE(V)	120	η down(%)	67.4	CIBSE SHR MAX	1.75



C Range: 0 - 360DEG
 C Interval: 22.5DEG
 Test Speed: HIGH
 Temperature: 25.3DEG
 Operators: 陈庆玲
 Test Date: 2018-09-11

γ Range: 0 - 180DEG
 γ Interval: 5.0DEG
 Test System: EVERFINE GO-SPEX500_V1 SYSTEM V2.0.363T
 Humidity: 40%
 Test Distance: 5.000m [K=1.0000]
 Remarks:

EVERFINE GONIOPHOTOMETERS SYSTEM TEST REPORT

ZONAL FLUX DIAGRAM

ZONAL FLUX DIAGRAM:

γ	C0	C45	C90	C135	C180	C225	C270	C315	γ	Φ zone	Φ total	%lum, lamp
10	104.9	105.4	106.3	107.2	108.0	107.8	106.7	105.4	0- 10	10.14	10.14	1.12,1.12
20	104.6	105.4	107.3	109.3	110.3	109.8	107.9	105.7	10- 20	30.34	40.48	4.46,4.46
30	104.4	105.4	108.0	110.7	111.7	110.8	108.4	105.8	20- 30	49.96	90.43	9.97,9.97
40	103.1	104.2	107.2	110.2	111.0	109.9	107.4	104.6	30- 40	67.71	158.1	17.4,17.4
50	100.3	101.5	104.6	107.6	108.2	106.8	104.5	101.7	40- 50	82.03	240.2	26.5,26.5
60	95.93	97.15	100.0	102.8	103.1	101.7	99.69	97.21	50- 60	91.64	331.8	36.6,36.6
70	90.12	91.21	93.87	96.32	96.14	94.78	93.24	91.18	60- 70	95.89	427.7	47.2,47.2
80	83.04	84.00	86.25	88.33	87.77	86.50	85.40	83.85	70- 80	94.76	522.5	57.6,57.6
90	75.15	75.98	77.79	79.33	78.53	77.43	76.74	75.70	80- 90	88.84	611.3	67.4,67.4
100	66.63	67.28	68.63	69.76	68.75	67.74	67.51	66.95	90-100	79.16	690.5	76.1,76.1
110	57.80	58.24	59.20	59.91	58.72	57.81	57.94	57.82	100-110	66.90	757.3	83.5,83.5
120	48.77	49.11	49.70	49.95	48.72	47.87	48.26	48.52	110-120	53.32	810.7	89.4,89.4
130	39.89	40.20	40.41	40.37	38.93	38.19	38.75	39.28	120-130	39.72	850.4	93.8,93.8
140	31.25	31.53	31.47	31.18	29.74	29.06	29.71	30.41	130-140	27.19	877.6	96.8,96.8
150	23.25	23.50	23.24	22.77	21.39	20.83	21.48	22.25	140-150	16.67	894.3	98.6,98.6
160	16.26	16.49	16.09	15.51	14.19	13.53	14.33	15.17	150-160	8.747	903.0	99.6,99.6
170	9.700	10.04	9.536	8.142	5.173	4.925	6.845	8.235	160-170	3.391	906.4	100,100
180	0.9836	0.9896	0.9896	0.9881	0.9851	0.9896	0.9881	0.9896	170-180	0.3800	906.8	100,100
DEG	LUMINOUS INTENSITY:cd									UNIT:lm		

Conical surface Flux(90deg): 197.64 lm

%lum = 21.8%
%lamp = 21.8%

Conical surface Flux(120deg): 331.81 lm

%lum = 36.6%
%lamp = 36.6%

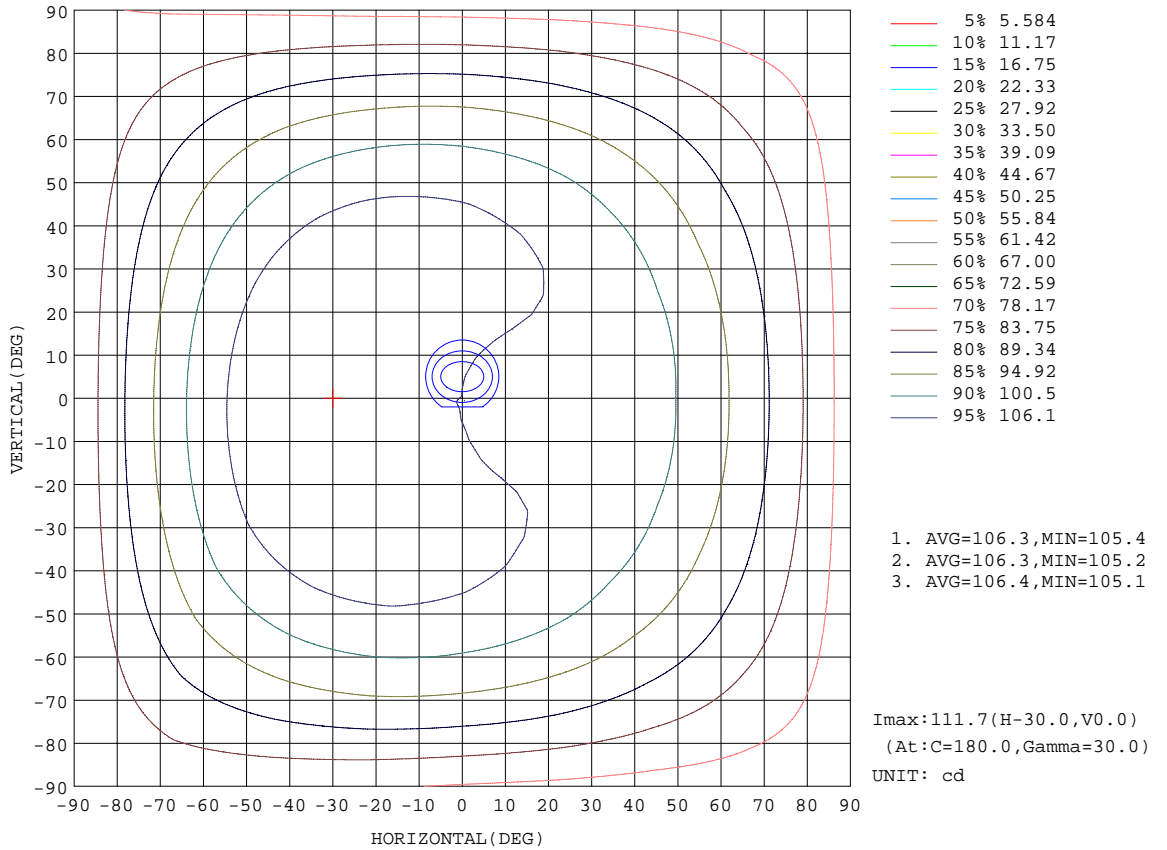
C Range: 0 - 360DEG
C Interval: 22.5DEG
Test Speed: HIGH
Temperature:25.3DEG
Operators:陈庆玲
Test Date:2018-09-11

γ Range: 0 - 180DEG
γ Interval: 5.0DEG
Test System:EVERFINE GO-SPEX500_V1 SYSTEM V2.0.363T
Humidity:40%
Test Distance:5.000m [K=1.0000]
Remarks:

EVERFINE GONIOPHOTOMETERS SYSTEM TEST REPORT

ISOCANDELA DIAGRAM

Test:U:120.0V I:0.1038A P:9.537W PF:0.7661 Freq:59.98Hz Lamp Flux:906.77lx1 lm		
NAME: A19-9-GU24-850-DIM	TYPE:LED	WEIGHT:
SPEC.:120V/9.5W/800LM	DIM.:	SERIAL No.:A1811961C001
MFR.: RAB LIGHTING INC	SUR.:	Shielding Angle:



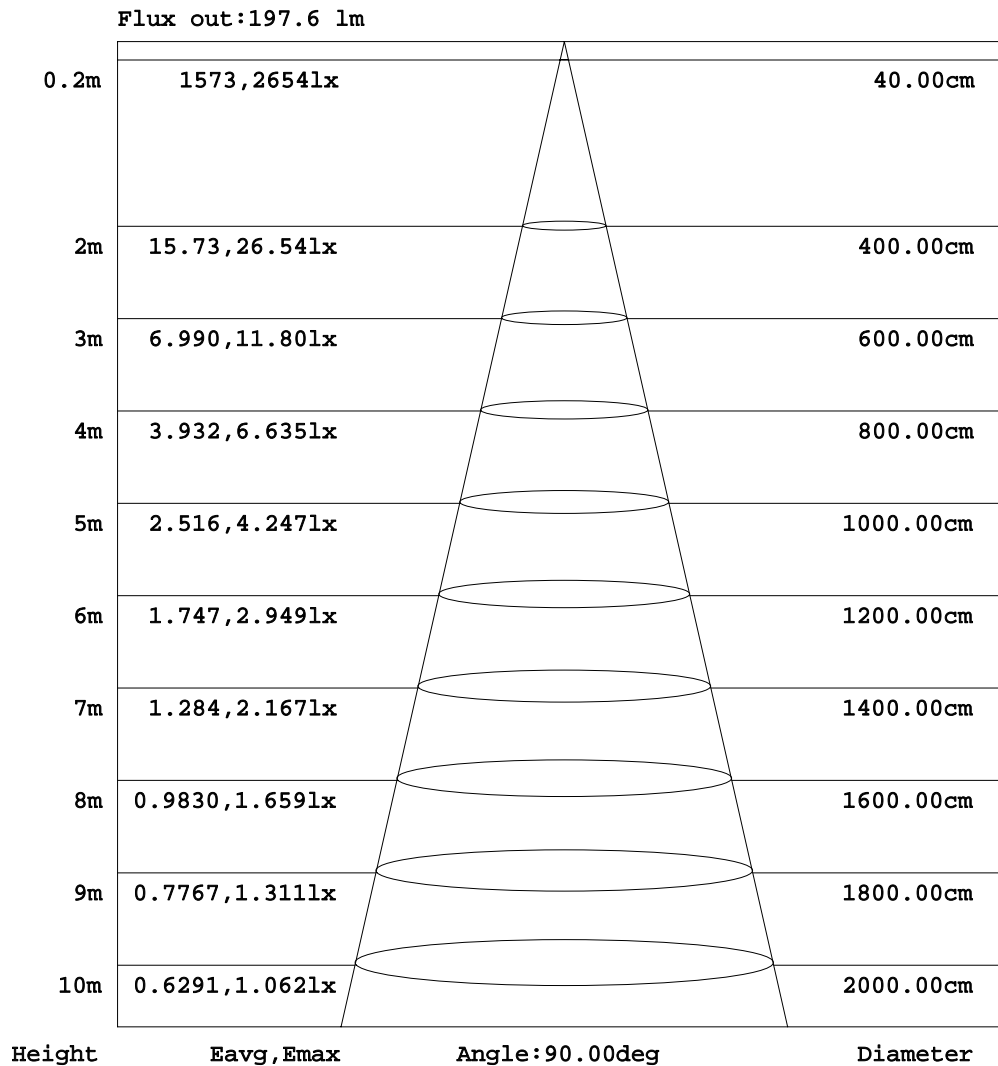
C Range: 0 - 360DEG
 C Interval: 22.5DEG
 Test Speed: HIGH
 Temperature:25.3DEG
 Operators:陈庆玲
 Test Date:2018-09-11

γ Range: 0 - 180DEG
 γ Interval: 5.0DEG
 Test System:EVERFINE GO-SPEX500_V1 SYSTEM V2.0.363T
 Humidity:40%
 Test Distance:5.000m [K=1.0000]
 Remarks:

EVERFINE GONIOPHOTOMETERS SYSTEM TEST REPORT

AAI Figure

Test:U:120.0V I:0.1038A P:9.537W PF:0.7661 Freq:59.98Hz Lamp Flux:906.77lx1 lm		
NAME: A19-9-GU24-850-DIM	TYPE:LED	WEIGHT:
SPEC.:120V/9.5W/800LM	DIM.:	SERIAL No.:A1811961C001
MFR.: RAB LIGHTING INC	SUR.:	Shielding Angle:



Note:The Curves indicate the illuminated area and the average illumination when the luminaire is at different distance.

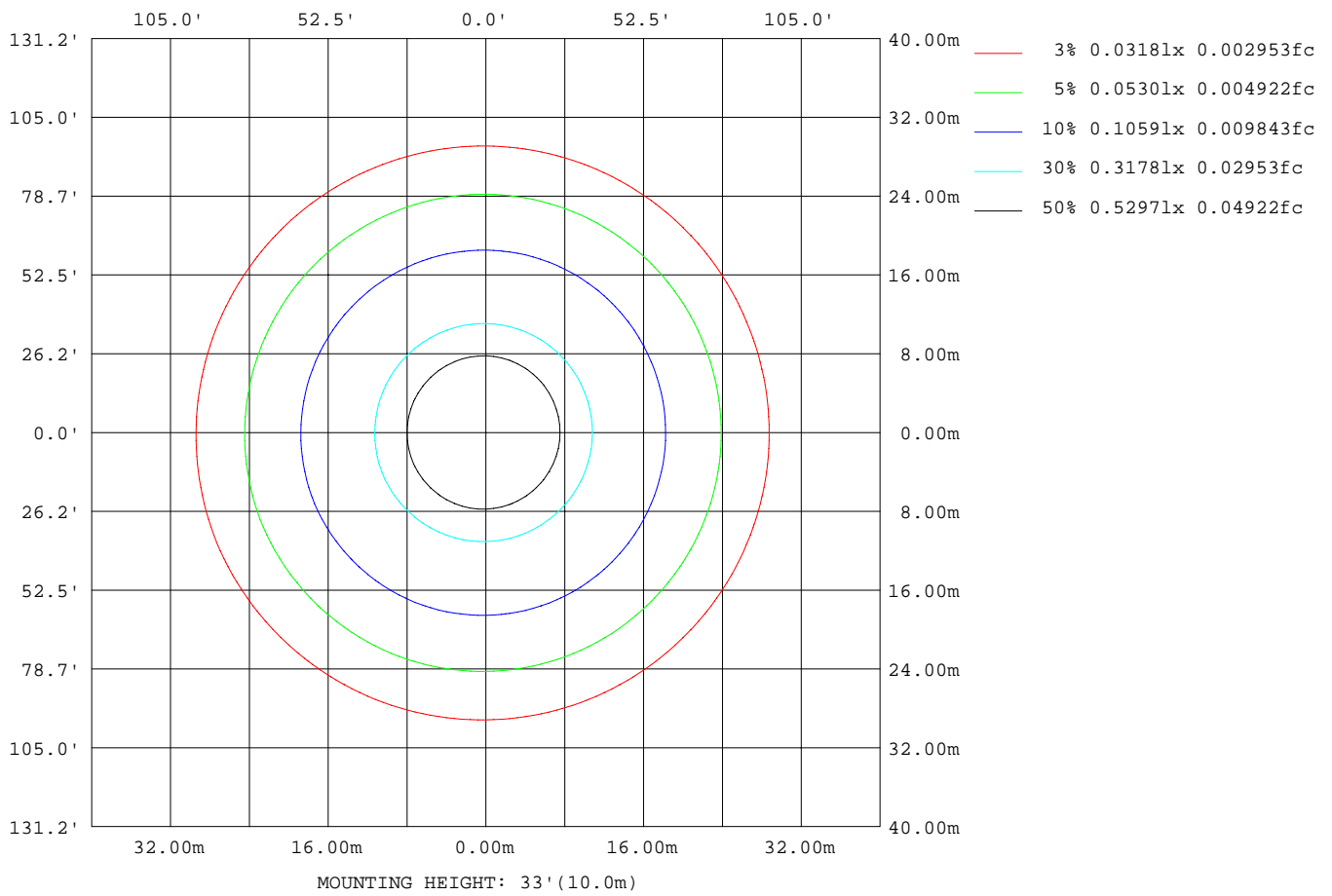
C Range: 0 - 360DEG
 C Interval: 22.5DEG
 Test Speed: HIGH
 Temperature:25.3DEG
 Operators:陈庆玲
 Test Date:2018-09-11

γ Range: 0 - 180DEG
 γ Interval: 5.0DEG
 Test System:EVERFINE GO-SPEX500_V1 SYSTEM V2.0.363T
 Humidity:40%
 Test Distance:5.000m [K=1.0000]
 Remarks:

EVERFINE GONIOPHOTOMETERS SYSTEM TEST REPORT

ISOLUX DIAGRAM

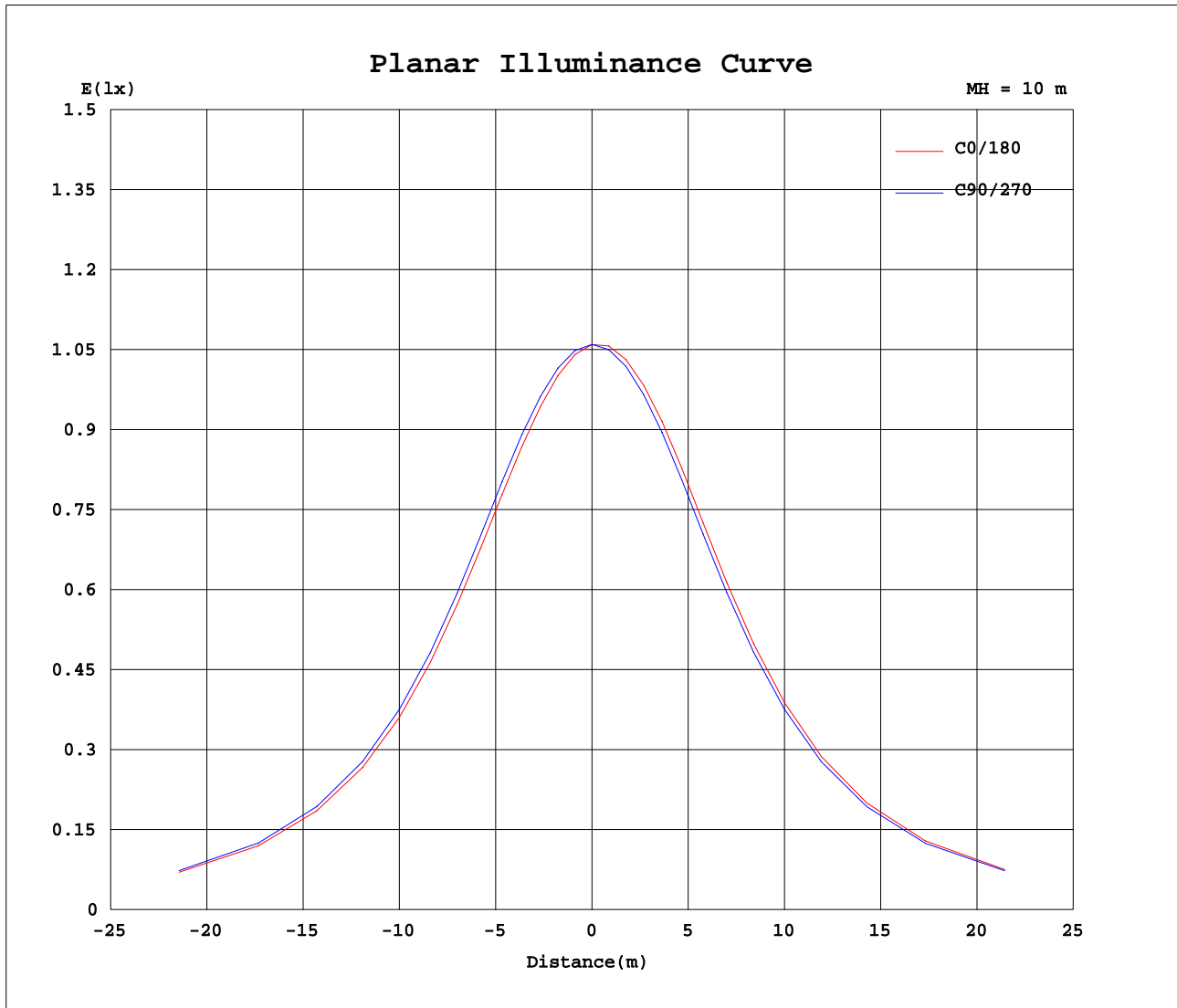
Test:U:120.0V I:0.1038A P:9.537W PF:0.7661 Freq:59.98Hz Lamp Flux:906.77lx1 lm		
NAME: A19-9-GU24-850-DIM	TYPE:LED	WEIGHT:
SPEC.:120V/9.5W/800LM	DIM.:	SERIAL No.:A1811961C001
MFR.: RAB LIGHTING INC	SUR.:	Shielding Angle:



C Range: 0 - 360DEG
 C Interval: 22.5DEG
 Test Speed: HIGH
 Temperature:25.3DEG
 Operators:陈庆玲
 Test Date:2018-09-11

γ Range: 0 - 180DEG
 γ Interval: 5.0DEG
 Test System:EVERFINE GO-SPEX500_V1 SYSTEM V2.0.363T
 Humidity:40%
 Test Distance:5.000m [K=1.0000]
 Remarks:

Planar Illuminance Curve



C Range: 0 - 360DEG
 C Interval: 22.5DEG
 Test Speed: HIGH
 Temperature: 25.3DEG
 Operators: 陈庆玲
 Test Date: 2018-09-11

γ Range: 0 - 180DEG
 γ Interval: 5.0DEG
 Test System: EVERFINE GO-SPEX500_V1 SYSTEM V2.0.363T
 Humidity: 40%
 Test Distance: 5.000m [K=1.0000]
 Remarks:

EVERFINE GONIOPHOTOMETERS SYSTEM TEST REPORT

LUMINOUS DISTRIBUTION INTENSITY DATA

Test:U:120.0V I:0.1038A P:9.537W PF:0.7661 Freq:59.98Hz Lamp Flux:906.771x1 lm		
NAME: A19-9-GU24-850-DIM	TYPE:LED	WEIGHT:
SPEC.:120V/9.5W/800LM	DIM.:	SERIAL No.:A1811961C001
MFR.: RAB LIGHTING INC	SUR.:	Shielding Angle:

Table--1

UNIT: cd

C(DEG) γ (DEG)	0	22.5	45	67.5	90	112.5	135	157.5	180	202.5	225	247.5	270	292.5	315	337.5			
0	106	106	106	106	106	106	106	106	106	106	106	106	106	106	106	106			
5	105	105	106	106	106	106	106	107	107	107	107	107	106	106	106	105			
10	105	105	105	106	106	107	107	108	108	108	108	107	107	106	105	105			
15	105	105	105	106	107	108	108	109	109	109	109	108	107	106	105	105			
20	105	105	105	106	107	108	109	110	110	110	110	109	108	107	106	105			
25	105	105	105	106	108	109	110	111	111	111	111	110	108	107	106	105			
30	104	105	105	107	108	109	111	111	112	111	111	110	108	107	106	105			
35	104	104	105	106	108	109	111	111	112	111	111	109	108	107	105	104			
40	103	103	104	106	107	109	110	111	111	111	110	109	107	106	105	103			
45	102	102	103	105	106	108	109	110	110	109	109	107	106	105	103	102			
50	100	101	102	103	105	106	108	109	108	108	107	106	104	103	102	101			
55	98.3	98.6	99.5	101	103	104	105	106	106	105	105	103	102	101	99.7	98.6			
60	95.9	96.3	97.2	98.6	100	102	103	104	103	102	102	101	99.7	98.5	97.2	96.1			
65	93.2	93.5	94.4	95.8	97.2	98.7	99.8	101	99.8	99.1	98.4	97.4	96.6	95.6	94.3	93.2			
70	90.1	90.4	91.2	92.6	93.9	95.3	96.3	97.1	96.1	95.4	94.8	93.9	93.2	92.2	91.2	90.1			
75	86.7	87.0	87.8	89.1	90.2	91.6	92.5	93.2	92.2	91.4	90.8	90.1	89.4	88.6	87.6	86.6			
80	83.0	83.3	84.0	85.2	86.2	87.5	88.3	89.0	87.8	87.1	86.5	85.9	85.4	84.8	83.8	82.9			
85	79.2	79.4	80.1	81.2	82.1	83.2	83.9	84.5	83.2	82.6	82.1	81.5	81.2	80.6	79.9	79.0			
90	75.2	75.4	76.0	77.0	77.8	78.7	79.3	79.9	78.5	77.8	77.4	76.9	76.7	76.3	75.7	74.9			
95	71.0	71.2	71.7	72.6	73.2	74.1	74.6	75.0	73.7	73.0	72.6	72.3	72.2	71.9	71.4	70.6			
100	66.6	66.9	67.3	68.1	68.6	69.4	69.8	70.1	68.8	68.0	67.7	67.5	67.5	67.4	67.0	66.2			
105	62.3	62.5	62.7	63.6	64.0	64.6	64.9	65.2	63.8	63.0	62.8	62.6	62.8	62.7	62.4	61.8			
110	57.8	58.0	58.2	59.0	59.2	59.7	59.9	60.2	58.7	58.0	57.8	57.7	57.9	58.0	57.8	57.3			
115	53.3	53.5	53.7	54.3	54.5	54.9	54.9	55.2	53.7	53.0	52.8	52.7	53.1	53.2	53.2	52.7			
120	48.8	49.0	49.1	49.7	49.7	50.0	49.9	50.2	48.7	48.0	47.9	47.8	48.3	48.4	48.5	48.1			
125	44.3	44.5	44.7	45.0	45.1	45.2	45.2	45.3	43.8	43.2	43.0	43.1	43.5	43.8	43.9	43.7			
130	39.9	40.1	40.2	40.5	40.4	40.5	40.4	40.4	38.9	38.3	38.2	38.3	38.8	39.2	39.3	39.1			
135	35.5	35.7	35.8	36.0	35.9	35.9	35.7	35.7	34.2	33.7	33.5	33.7	34.1	34.6	34.8	34.7			
140	31.2	31.5	31.5	31.7	31.5	31.4	31.2	31.1	29.7	29.2	29.1	29.2	29.7	30.2	30.4	30.4			
145	27.2	27.4	27.4	27.5	27.2	27.2	26.9	26.8	25.4	24.9	24.8	25.0	25.5	26.0	26.2	26.3			
150	23.2	23.5	23.5	23.6	23.2	23.1	22.8	22.7	21.4	20.9	20.8	21.0	21.5	22.0	22.3	22.4			
155	19.6	19.8	19.8	19.9	19.5	19.3	19.0	18.9	17.7	17.2	17.2	17.3	17.8	18.3	18.6	18.7			
160	16.3	16.5	16.5	16.5	16.1	15.9	15.5	15.3	14.2	13.7	13.5	13.8	14.3	14.8	15.2	15.4			
165	13.0	13.3	13.3	13.3	12.9	12.6	11.9	11.6	10.6	10.3	9.67	10.2	10.8	11.4	11.8	12.1			
170	9.70	10.1	10.0	10.1	9.54	9.19	8.14	7.63	5.17	3.33	4.93	5.80	6.85	7.67	8.23	8.58			
175	2.77	3.31	3.22	3.22	2.68	2.49	2.20	1.79	0.93	0.93	0.93	0.94	0.94	0.95	1.11	1.36			
180	0.98	0.99	0.99	0.99	0.99	0.99	0.99	0.98	0.99	0.99	0.99	0.99	0.99	0.99	0.99	0.99			

C Range: 0 - 360DEG
 C Interval: 22.5DEG
 Test Speed: HIGH
 Temperature:25.3DEG
 Operators:陈庆玲
 Test Date:2018-09-11

γ Range: 0 - 180DEG
 γ Interval: 5.0DEG
 Test System:EVERFINE GO-SPEX500_V1 SYSTEM V2.0.363T
 Humidity:40%
 Test Distance:5.000m [K=1.0000]
 Remarks: