

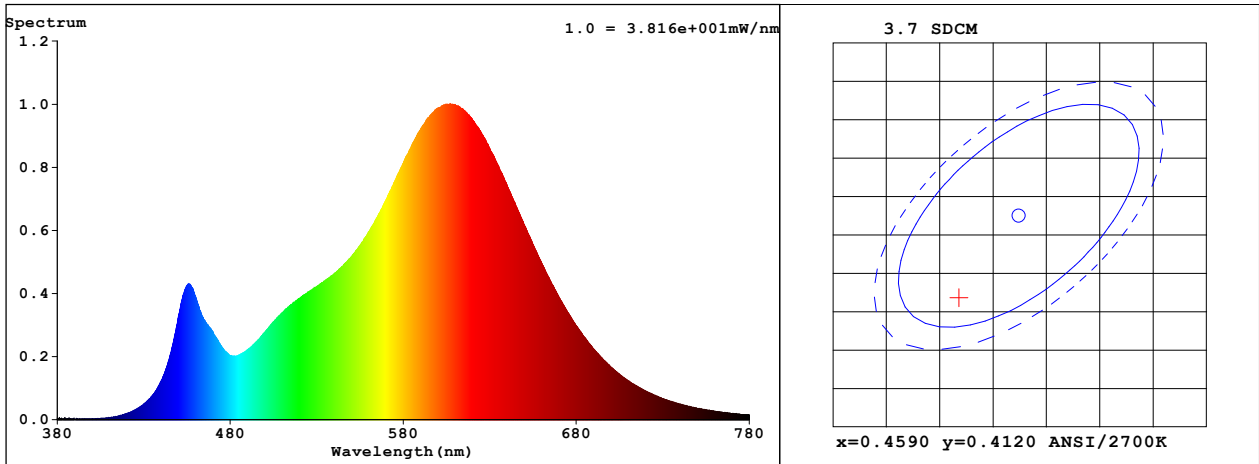
# Spectrum Test Report

Sample : Self-ballasted LED lamps Date : 2019-06-06 13:47:40  
Specification : A21-16-E26-827-ND Sam. Status : OK  
Sample No. : N19LEDGW54505-01 Instrument : HaasSuite(EVERFINE)  
Manufacturer : RAB Lighting Inc

## Test Condition

Temperature : 25.0Deg RH : 33.0%  
WL Range : 380nm-780nm IP : 56121 (86%)  
Test Mode : Accuracy Test T : 494 ms

## Spectrum



Spectral Distribution

CIE1931 Chromaticity Diagram

## Colorimetric Parameters

Chromaticity Coordinate:  $x = 0.4542$   $y = 0.4034$  /  $u' = 0.2620$   $v' = 0.5237$  ( $duv = -2.38e-03$ )

CCT= 2725K Prcp WL: Ld=584.8nm Purity=57.4%

Peak WL: Lp=607nm FWHM: =112.3nm Ratio:R=25.3% G=72.1% B=2.6%

Render Index: Ra = 83.0

R1 =83 R2 =95 R3 =92 R4 =80 R5 =84 R6 =94 R7 =80  
R8 =57 R9 =11 R10=88 R11=80 R12=80 R13=86 R14=96 R15=75

## Photometric & Radiometric Parameters

Flux = 1743.1 lm Eff. : 116.73 lm/W Fe = 5.4455 W

Photosynthetic:PPF:25.417umol/s PAR WATT:5221.7mW(400-700nm)

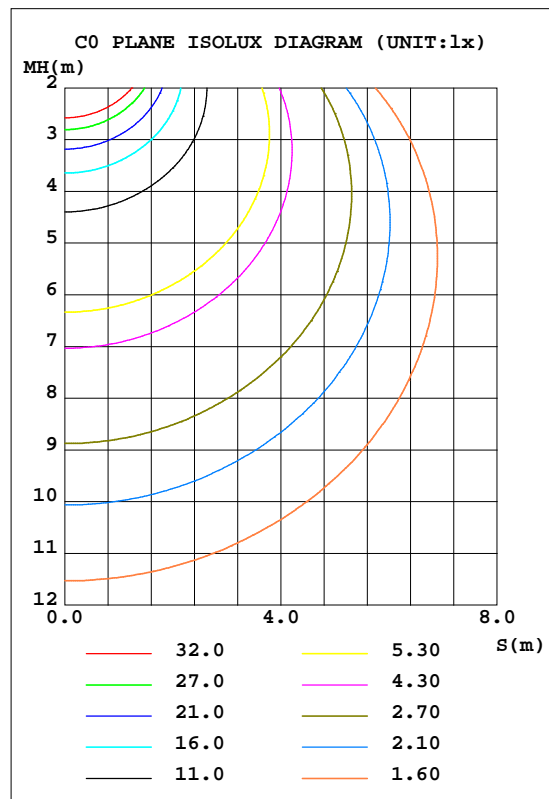
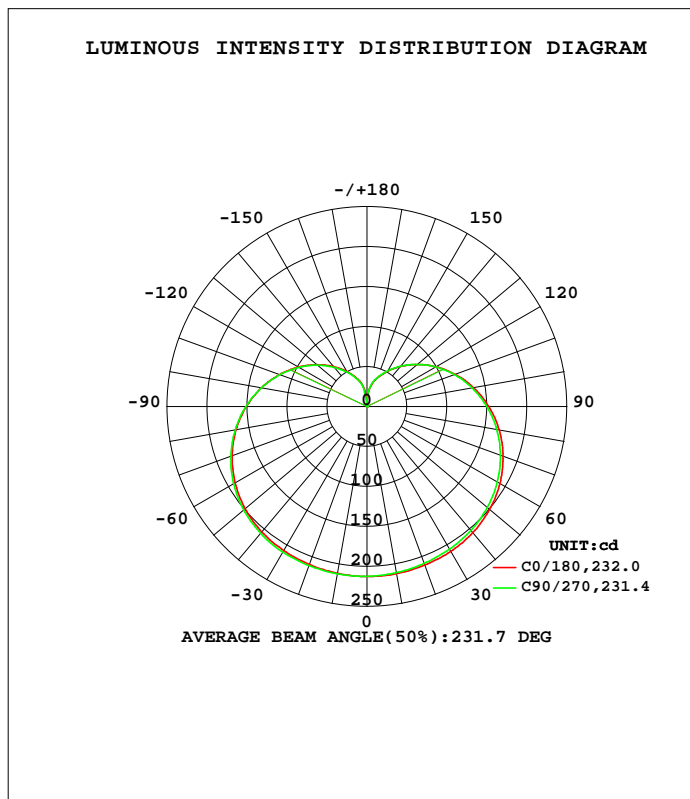
## Electrical parameters

V = 120.0 V I = 0.1291 A P = 14.93 W PF = 0.9637

LUMINAIRE PHOTOMETRIC TEST REPORT

Test:U:119.9V I:0.1296A P:14.99W PF:0.9644 Freq:60.01Hz Lamp Flux:1780.97x1 lm		
NAME: Self-ballasted LED lamps	TYPE:	WEIGHT:
SPEC.:	DIM.:	SERIAL No.:N19LEDGW54505-01
MFR.: /	SUR.:	Shielding Angle:

DATA OF LAMP		PHOTOMETRIC DATA Eff: 118.83 lm/W			
MODEL	A21-16-E26-827-ND	I <sub>max</sub> (cd)	212.8	S/MH(C0/180)	1.49
NOMINAL POWER(W)	16	LOR(%)	100.0	S/MH(C90/270)	1.51
RATED VOLTAGE(V)	120	TOTAL FLUX(lm)	1781.0	h UP, DN(C0-180)	17.0, 32.9
NOMINAL FLUX(lm)	1780.97	CIE CLASS	SEMI-D.	h UP, DN(C180-360)	16.8, 33.3
LAMPS INSIDE	1	h up(%)	33.8	CIBSE SHR NOM	1.75
TEST VOLTAGE(V)		h down(%)	66.2	CIBSE SHR MAX	1.75



C Range: 0 - 360DEG  
 C Interval: 22.5DEG  
 Test Speed: HIGH  
 Temperature:25.2DEG  
 Operators:DJQ  
 Test Date:2019-06-06

Range: 0 - 180DEG  
 Interval: 1.0DEG  
 Test System:EVERFINE GO-R5000\_V2 SYSTEM V2.0.404.6  
 Humidity:46%  
 Test Distance:1.809m [K=1.0000]  
 Remarks:

ZONAL FLUX DIAGRAM

ZONAL FLUX DIAGRAM:

g	C0	C45	C90	C135	C180	C225	C270	C315	g	F zone	F total	%lum,lamp
10	212.4	211.6	211.1	211.1	211.9	212.4	212.5	212.0	0- 10	20.25	20.25	1.14,1.14
20	211.0	209.8	209.0	208.8	210.1	211.1	211.8	211.1	10- 20	59.82	80.07	4.5,4.5
30	209.5	207.6	206.2	206.2	208.2	209.4	210.3	209.7	20- 30	96.89	177.0	9.94,9.94
40	205.8	204.0	202.3	202.4	204.8	206.0	207.0	206.7	30- 40	129.9	306.8	17.2,17.2
50	200.3	198.5	196.4	196.7	199.0	200.3	201.3	201.1	40- 50	156.6	463.4	26,26
60	192.2	190.3	188.2	188.5	190.5	191.7	192.7	193.0	50- 60	175.1	638.5	35.8,35.8
70	181.3	179.6	177.6	177.8	179.4	180.4	181.2	181.7	60- 70	184.1	822.6	46.2,46.2
80	167.9	166.5	164.7	164.8	166.2	166.8	167.2	168.0	70- 80	183.3	1006	56.5,56.5
90	152.4	151.5	149.9	150.2	150.9	151.3	151.5	152.1	80- 90	173.4	1179	66.2,66.2
100	135.6	135.0	133.9	133.9	134.3	134.2	134.2	134.8	90-100	155.9	1335	75,75
110	117.8	117.6	116.8	116.8	116.8	116.3	116.3	116.9	100-110	133.1	1468	82.4,82.4
120	99.63	99.73	99.33	98.95	99.01	98.39	98.13	98.83	110-120	107.2	1575	88.5,88.5
130	82.07	82.31	82.14	81.72	81.61	80.88	80.61	81.05	120-130	81.06	1657	93,93
140	65.57	65.99	66.02	65.58	65.31	64.59	64.13	64.62	130-140	56.92	1713	96.2,96.2
150	50.80	51.27	51.47	51.01	50.63	49.92	49.48	49.88	140-150	36.45	1750	98.3,98.3
160	37.89	38.46	38.68	38.31	37.79	37.08	36.83	37.09	150-160	20.54	1770	99.4,99.4
170	24.67	25.56	25.84	25.21	24.10	21.19	18.54	20.56	160-170	9.037	1779	99.9,99.9
180	0.0025	0.0023	0.0023	0.0023	0.0022	0.0020	0.0023	0.0022	170-180	1.509	1781	100,100
DEG	LUMINOUS INTENSITY:cd									UNIT:lm		

Conical surface Flux(90deg): 382.24 lm

%lum = 21.5%  
 %lamp = 21.5%

Conical surface Flux(120deg): 638.47 lm

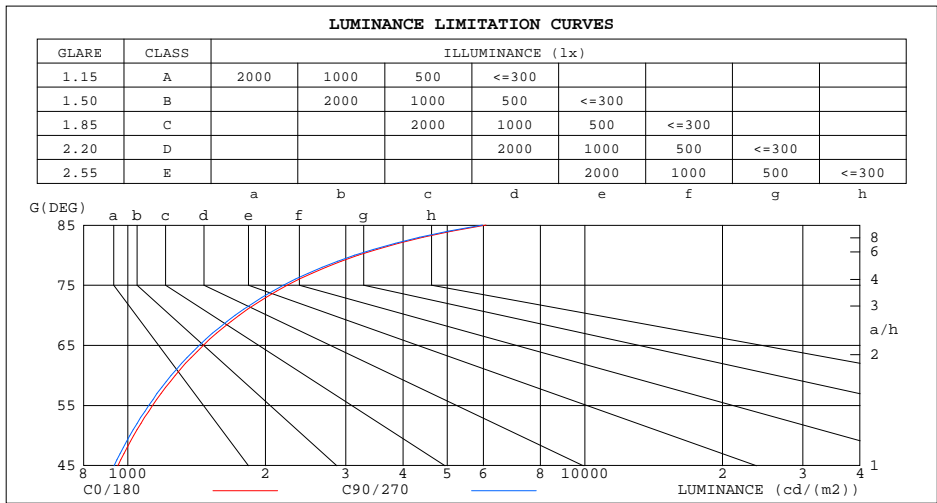
%lum = 35.8%  
 %lamp = 35.8%

C Range: 0 - 360DEG  
 C Interval: 22.5DEG  
 Test Speed: HIGH  
 Temperature:25.2DEG  
 Operators:DJQ  
 Test Date:2019-06-06

g Range: 0 - 180DEG  
 Interval: 1.0DEG  
 Test System:EVERFINE GO-R5000\_V2 SYSTEM V2.0.404.6  
 Humidity:46%  
 Test Distance:1.809m [K=1.0000]  
 Remarks:

LUMINANCE LIMITATION CURVES

Test:U:119.9V I:0.1296A P:14.99W PF:0.9644 Freq:60.01Hz Lamp Flux:1780.97x1 lm		
NAME: Self-ballasted LED lamps	TYPE:	WEIGHT:
SPEC.:	DIM.:	SERIAL No.:N19LEDGW54505-01
MFR.: /	SUR.:	Shielding Angle:



LUMINANCE cd/(m2)		
G(DEG)	C0/180	C90/270
85	6080	5974
80	3196	3136
75	2234	2191
70	1752	1717
65	1463	1433
60	1271	1244
55	1133	1111
50	1030	1010
45	951	934

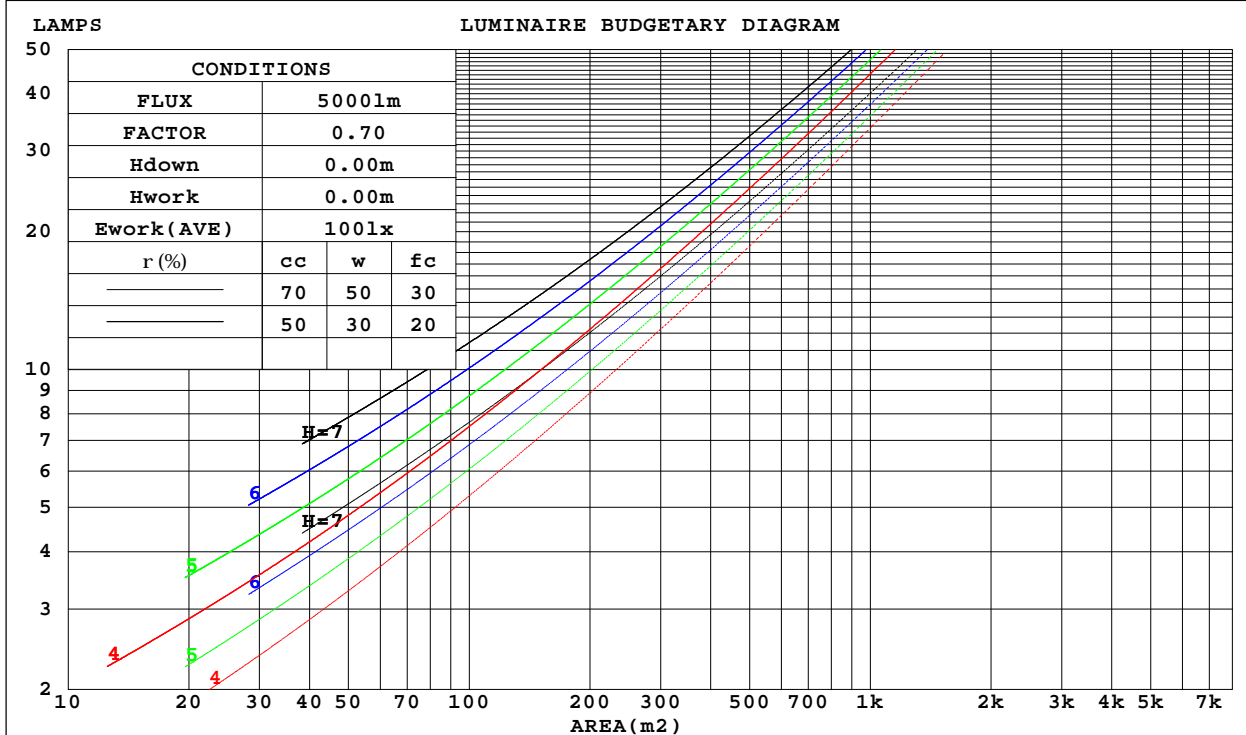
C Range: 0 - 360DEG  
 C Interval: 22.5DEG  
 Test Speed: HIGH  
 Temperature:25.2DEG  
 Operators:DJQ  
 Test Date:2019-06-06

G Range: 0 - 180DEG  
 Interval: 1.0DEG  
 Test System:EVERFINE GO-R5000\_V2 SYSTEM V2.0.404.6  
 Humidity:46%  
 Test Distance:1.809m [K=1.0000]  
 Remarks:

CU AND LUMINAIRE BUDGETARY ESTIMATE DIAGRAM

Test:U:119.9V I:0.1296A P:14.99W PF:0.9644 Freq:60.01Hz Lamp Flux:1780.97x1 lm		
NAME: Self-ballasted LED lamps	TYPE:	WEIGHT:
SPEC.:	DIM.:	SERIAL No.:N19LEDGW54505-01
MFR.: /	SUR.:	Shielding Angle:

r <sub>cc</sub>	80%			70%			50%			30%			10%			0
r <sub>w</sub>	50%	30%	10%	50%	30%	10%	50%	30%	10%	50%	30%	10%	50%	30%	10%	0
r <sub>fc</sub>	20%			20%			20%			20%			20%			0
RCR	RCR:Room Cavity Ratio						Coefficients of Utilization(CU)									
0.0	1.11	1.11	1.11	1.04	1.04	1.04	.92	.92	.92	.81	.81	.81	.71	.71	.71	.66
1.0	.90	.84	.79	.85	.79	.75	.74	.70	.66	.64	.61	.58	.55	.53	.51	.46
2.0	.76	.68	.61	.71	.64	.58	.62	.56	.51	.54	.49	.45	.46	.42	.39	.35
3.0	.66	.56	.49	.61	.53	.46	.53	.47	.41	.46	.41	.36	.39	.35	.31	.28
4.0	.57	.48	.40	.54	.45	.38	.47	.40	.34	.40	.35	.30	.34	.30	.26	.22
5.0	.50	.41	.34	.47	.38	.32	.41	.34	.28	.36	.30	.25	.31	.26	.22	.19
6.0	.45	.35	.29	.42	.34	.27	.37	.30	.24	.32	.26	.22	.27	.23	.19	.16
7.0	.40	.31	.25	.38	.30	.24	.33	.26	.21	.29	.23	.19	.25	.20	.16	.14
8.0	.36	.28	.22	.34	.26	.21	.30	.23	.19	.26	.21	.16	.23	.18	.14	.12
9.0	.33	.25	.19	.31	.24	.18	.28	.21	.16	.24	.19	.15	.21	.16	.13	.11
10.0	.30	.22	.17	.29	.21	.16	.25	.19	.15	.22	.17	.13	.19	.15	.11	.09



C Range: 0 - 360DEG  
 C Interval: 22.5DEG  
 Test Speed: HIGH  
 Temperature:25.2DEG  
 Operators:DJQ  
 Test Date:2019-06-06

Range: 0 - 180DEG  
 Interval: 1.0DEG  
 Test System:EVERFINE GO-R5000\_V2 SYSTEM V2.0.404.6  
 Humidity:46%  
 Test Distance:1.809m [K=1.0000]  
 Remarks:

WEC AND CCEC

Test:U:119.9V I:0.1296A P:14.99W PF:0.9644 Freq:60.01Hz Lamp Flux:1780.97x1 lm		
NAME: Self-ballasted LED lamps	TYPE:	WEIGHT:
SPEC.:	DIM.:	SERIAL No.:N19LEDGW54505-01
MFR.: /	SUR.:	Shielding Angle:

rcc	80%			70%			50%			30%			10%			0
rw	50%	30%	10%	50%	30%	10%	50%	30%	10%	50%	30%	10%	50%	30%	10%	0
rfc	20%			20%			20%			20%			20%			0
RCR	RCR:Room Cavity Ratio						Wall Exitance Coefficients(WEC)									
0.0																
1.0	.417	.237	.075	.399	.228	.072	.366	.210	.067	.336	.194	.062	.308	.179	.058	
2.0	.350	.192	.059	.334	.184	.057	.304	.169	.052	.276	.155	.049	.251	.142	.045	
3.0	.306	.163	.049	.291	.156	.047	.264	.143	.043	.239	.131	.040	.215	.119	.037	
4.0	.272	.142	.042	.259	.136	.040	.234	.124	.037	.211	.113	.034	.190	.103	.031	
5.0	.246	.125	.036	.234	.120	.035	.211	.110	.032	.190	.100	.030	.170	.091	.027	
6.0	.224	.112	.032	.213	.108	.031	.192	.098	.029	.172	.090	.026	.154	.081	.024	
7.0	.206	.102	.029	.196	.097	.028	.176	.089	.026	.158	.081	.024	.141	.073	.022	
8.0	.190	.093	.026	.181	.089	.025	.163	.081	.023	.146	.074	.021	.130	.067	.019	
9.0	.177	.086	.024	.168	.082	.023	.152	.075	.021	.136	.068	.019	.121	.062	.018	
10.0	.165	.079	.022	.157	.076	.021	.142	.069	.020	.127	.063	.018	.113	.057	.016	

rcc	80%			70%			50%			30%			10%			0
rw	50%	30%	10%	50%	30%	10%	50%	30%	10%	50%	30%	10%	50%	30%	10%	0
rfc	20%			20%			20%			20%			20%			0
RCR	RCR:Room Cavity Ratio						Ceiling Cavity Exitance Coefficients(CCEC)									
0.0	.448	.448	.448	.383	.383	.383	.261	.261	.261	.150	.150	.150	.048	.048	.048	
1.0	.447	.415	.385	.383	.356	.332	.262	.245	.229	.151	.142	.133	.048	.046	.043	
2.0	.441	.393	.352	.378	.338	.305	.259	.234	.212	.149	.136	.125	.048	.044	.041	
3.0	.434	.377	.332	.372	.325	.288	.255	.226	.202	.148	.132	.119	.047	.043	.039	
4.0	.426	.365	.319	.366	.316	.277	.252	.220	.195	.146	.129	.115	.047	.042	.038	
5.0	.419	.356	.310	.360	.308	.269	.248	.215	.190	.144	.126	.113	.046	.041	.037	
6.0	.411	.348	.303	.354	.302	.264	.244	.211	.187	.142	.124	.111	.046	.041	.037	
7.0	.404	.342	.298	.348	.296	.260	.240	.208	.184	.140	.122	.110	.045	.040	.036	
8.0	.398	.337	.295	.342	.292	.257	.237	.205	.182	.138	.121	.109	.045	.040	.036	
9.0	.391	.332	.292	.337	.288	.255	.234	.203	.181	.136	.120	.108	.044	.039	.036	
10.0	.385	.328	.290	.332	.285	.253	.231	.200	.180	.134	.118	.107	.044	.039	.036	

C Range: 0 - 360DEG  
 C Interval: 22.5DEG  
 Test Speed: HIGH  
 Temperature:25.2DEG  
 Operators:DJQ  
 Test Date:2019-06-06

g Range: 0 - 180DEG  
 Interval: 1.0DEG  
 Test System:EVERFINE GO-R5000\_V2 SYSTEM V2.0.404.6  
 Humidity:46%  
 Test Distance:1.809m [K=1.0000]  
 Remarks:

UGR(Unified Glare Rating) Table

Test:U:119.9V I:0.1296A P:14.99W PF:0.9644 Freq:60.01Hz Lamp Flux:1780.97x1 lm										
NAME: Self-ballasted LED lamps					TYPE:			WEIGHT:		
SPEC.:					DIM.:			SERIAL No.:N19LEDGW54505-01		
MFR.: /					SUR.:			Shielding Angle:		
ceiling/cavity	0.7	0.7	0.5	0.5	0.3	0.7	0.7	0.5	0.5	0.3
walls	0.5	0.3	0.5	0.3	0.3	0.5	0.3	0.5	0.3	0.3
working plane	0.2	0.2	0.2	0.2	0.2	0.2	0.2	0.2	0.2	0.2
Room dimensions	Viewed crosswise					Viewed endwise				
x = 2H y = 2H	9.3	10.5	10.0	11.3	12.1	9.2	10.4	9.9	11.2	12.0
3H	12.2	13.4	12.9	14.1	15.0	12.1	13.3	12.8	14.0	14.9
4H	13.9	14.9	14.6	15.7	16.6	13.8	14.8	14.5	15.6	16.5
6H	15.7	16.7	16.4	17.5	18.4	15.6	16.6	16.3	17.4	18.3
8H	16.7	17.7	17.4	18.4	19.4	16.6	17.5	17.3	18.3	19.3
12H	17.8	18.8	18.6	19.6	20.6	17.7	18.7	18.5	19.5	20.4
4H 2H	10.2	11.3	10.9	12.0	13.0	10.1	11.2	10.9	12.0	12.9
3H	13.3	14.2	14.1	15.0	16.0	13.2	14.2	14.0	15.0	15.9
4H	15.1	15.9	15.9	16.8	17.8	15.0	15.9	15.8	16.7	17.7
6H	17.1	17.8	17.9	18.7	19.7	17.0	17.7	17.8	18.6	19.6
8H	18.2	18.9	19.0	19.7	20.8	18.1	18.8	18.9	19.6	20.7
12H	19.4	20.1	20.3	21.0	22.0	19.3	20.0	20.2	20.9	21.9
8H 4H	15.7	16.5	16.6	17.3	18.4	15.7	16.4	16.5	17.2	18.3
6H	18.0	18.6	18.8	19.5	20.6	17.9	18.5	18.8	19.4	20.5
8H	19.3	19.8	20.1	20.7	21.8	19.2	19.8	20.1	20.6	21.7
12H	20.8	21.2	21.6	22.1	23.3	20.7	21.2	21.6	22.1	23.2
12H 4H	15.9	16.6	16.7	17.4	18.5	15.8	16.5	16.7	17.4	18.4
6H	18.3	18.8	19.1	19.7	20.8	18.2	18.8	19.1	19.6	20.7
8H	19.7	20.2	20.6	21.1	22.2	19.6	20.1	20.5	21.0	22.1
Variations with the observer position at spacings:										
S = 1.0H	+ 0.1 / - 0.1					+ 0.1 / - 0.1				
1.5H	+ 0.2 / - 0.3					+ 0.2 / - 0.3				
2.0H	+ 0.3 / - 0.4					+ 0.3 / - 0.4				

CIE Pub.117, 1781 lm Total Lamp Luminous Flux Correct (8log(F/F0) = 2.0)

C Range: 0 - 360DEG  
 C Interval: 22.5DEG  
 Test Speed: HIGH  
 Temperature:25.2DEG  
 Operators:DJQ  
 Test Date:2019-06-06

g Range: 0 - 180DEG  
 Interval: 1.0DEG  
 Test System:EVERFINE GO-R5000\_V2 SYSTEM V2.0.404.6  
 Humidity:46%  
 Test Distance:1.809m [K=1.0000]  
 Remarks:

## UTILIZATION FACTORS TABLE

Test:U:119.9V I:0.1296A P:14.99W PF:0.9644 Freq:60.01Hz Lamp Flux:1780.97x1 lm		
NAME: Self-ballasted LED lamps	TYPE:	WEIGHT:
SPEC.:	DIM.:	SERIAL No.:N19LEDGW54505-01
MFR.: /	SUR.:	Shielding Angle:

REFLECTANCE										
Ceiling	0.8	0.8	0.8	0.7	0.7	0.7	0.5	0.5	0.5	0
Walls	0.7	0.5	0.3	0.7	0.5	0.3	0.7	0.5	0.3	0
Working plane	0.2	0.2	0.2	0.2	0.2	0.2	0.2	0.2	0.2	0
ROOM INDEX	UTILIZATION FACTORS(PERCENT) $k(RI) \times RCR = 5$									
k = 0.60	41	28	21	39	27	20	37	26	19	12
0.80	49	36	27	47	34	27	43	32	25	16
1.00	57	43	34	54	41	33	49	41	31	21
1.25	64	50	40	60	48	39	55	44	37	25
1.50	69	55	46	65	53	44	59	48	41	28
2.00	76	64	55	72	61	52	64	55	48	33
2.50	81	70	61	77	66	58	68	60	53	37
3.00	85	75	66	80	71	63	71	64	57	40
4.00	90	81	74	85	77	70	75	69	63	44
5.00	94	86	79	88	81	75	78	72	67	47
ROOM INDEX	UF(total)									Direct
According to DIN EN 13032-2 2004			Suspended				SHRNOM = 1.25			

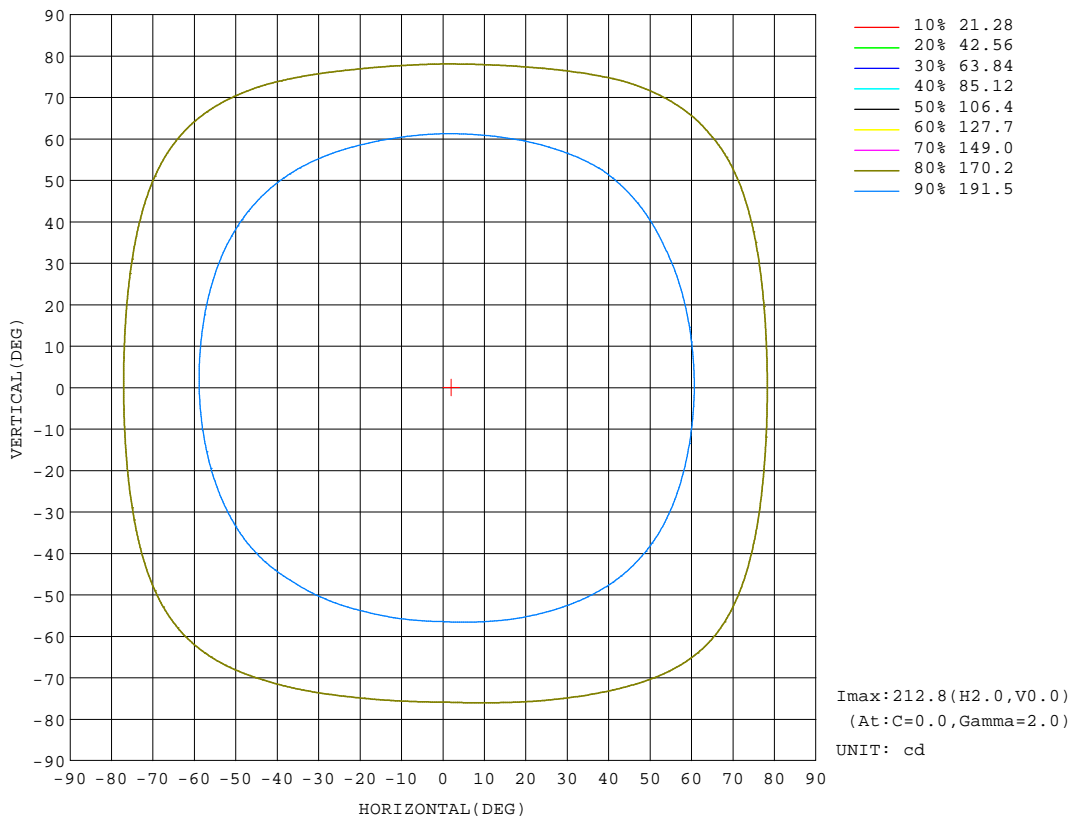
C Range: 0 - 360DEG  
 C Interval: 22.5DEG  
 Test Speed: HIGH  
 Temperature:25.2DEG  
 Operators:DJQ  
 Test Date:2019-06-06

g Range: 0 - 180DEG  
 Interval: 1.0DEG  
 Test System:EVERFINE GO-R5000\_V2 SYSTEM V2.0.404.6  
 Humidity:46%  
 Test Distance:1.809m [K=1.0000]  
 Remarks:



ISOCANDELA DIAGRAM

Test:U:119.9V I:0.1296A P:14.99W PF:0.9644 Freq:60.01Hz Lamp Flux:1780.97x1 lm		
NAME: Self-ballasted LED lamps	TYPE:	WEIGHT:
SPEC.:	DIM.:	SERIAL No.:N19LEDGW54505-01
MFR.: /	SUR.:	Shielding Angle:



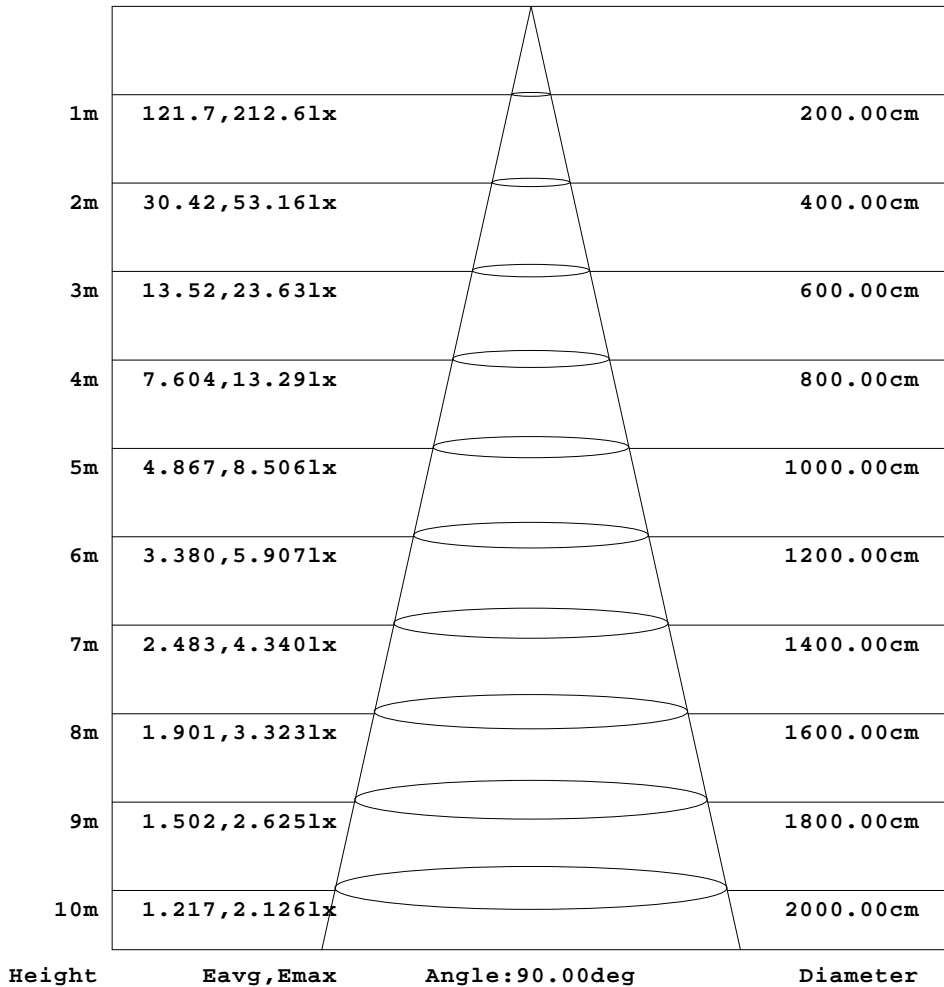
C Range: 0 - 360DEG  
 C Interval: 22.5DEG  
 Test Speed: HIGH  
 Temperature: 25.2DEG  
 Operators: DJQ  
 Test Date: 2019-06-06

Range: 0 - 180DEG  
 Interval: 1.0DEG  
 Test System: EVERFINE GO-R5000\_V2 SYSTEM V2.0.404.6  
 Humidity: 46%  
 Test Distance: 1.809m [K=1.0000]  
 Remarks:

AAI Figure

Test:U:119.9V I:0.1296A P:14.99W PF:0.9644 Freq:60.01Hz Lamp Flux:1780.97x1 lm		
NAME: Self-ballasted LED lamps	TYPE:	WEIGHT:
SPEC.:	DIM.:	SERIAL No.:N19LEDGW54505-01
MFR.: /	SUR.:	Shielding Angle:

Flux out:382.2 lm



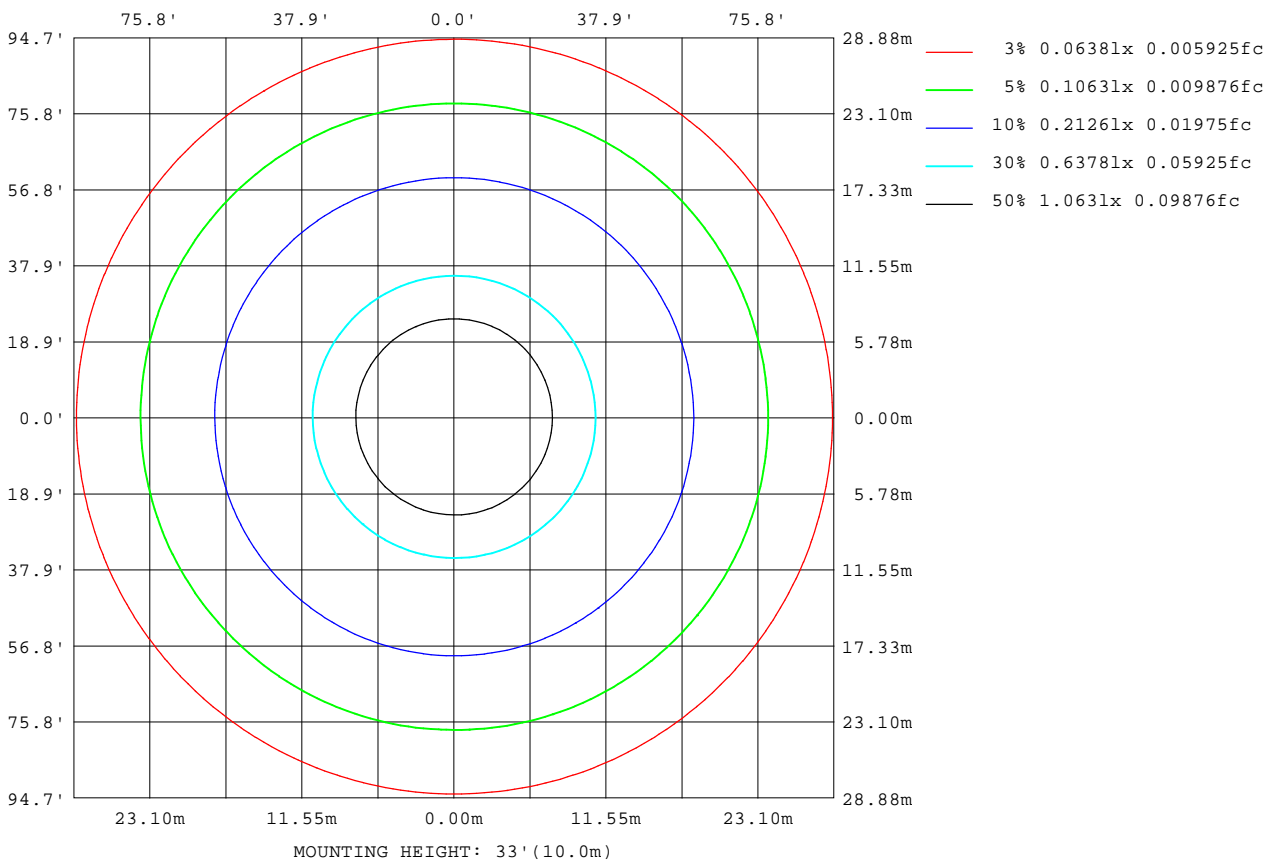
Note:The Curves indicate the illuminated area and the average illumination when the luminaire is at different distance.

C Range: 0 - 360DEG  
 C Interval: 22.5DEG  
 Test Speed: HIGH  
 Temperature:25.2DEG  
 Operators:DJQ  
 Test Date:2019-06-06

Range: 0 - 180DEG  
 Interval: 1.0DEG  
 Test System:EVERFINE GO-R5000\_V2 SYSTEM V2.0.404.6  
 Humidity:46%  
 Test Distance:1.809m [K=1.0000]  
 Remarks:

ISOLUX DIAGRAM

Test:U:119.9V I:0.1296A P:14.99W PF:0.9644 Freq:60.01Hz Lamp Flux:1780.97x1 lm		
NAME: Self-ballasted LED lamps	TYPE:	WEIGHT:
SPEC.:	DIM.:	SERIAL No.:N19LEDGW54505-01
MFR.: /	SUR.:	Shielding Angle:



C Range: 0 - 360DEG  
 C Interval: 22.5DEG  
 Test Speed: HIGH  
 Temperature:25.2DEG  
 Operators:DJQ  
 Test Date:2019-06-06

Range: 0 - 180DEG  
 Interval: 1.0DEG  
 Test System:EVERFINE GO-R5000\_V2 SYSTEM V2.0.404.6  
 Humidity:46%  
 Test Distance:1.809m [K=1.0000]  
 Remarks:

## LED Avg.L Report

Test:U:119.9V I:0.1296A P:14.99W PF:0.9644 Freq:60.01Hz Lamp Flux:1780.97x1 lm		
NAME: Self-ballasted LED lamps	TYPE:	WEIGHT:
SPEC.:	DIM.:	SERIAL No.:N19LEDGW54505-01
MFR.: /	SUR.:	Shielding Angle:

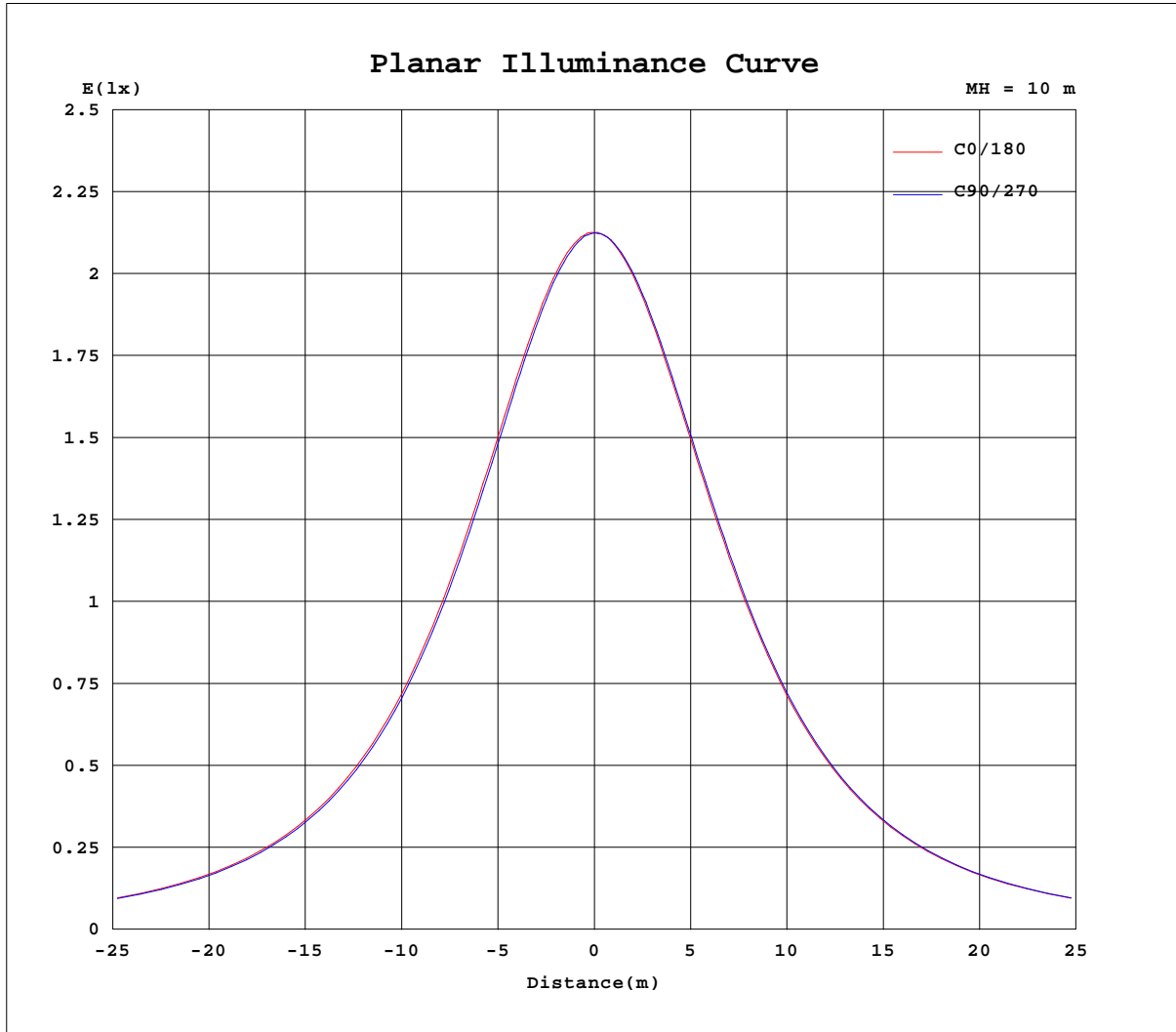
AvgL	cd/m2
L_0~180(65)av	1456
L_0~180(75)av	2222
L_0~180(85)av	6049
L_90~270(65)av	1449
L_90~270(75)av	2209
L_90~270(85)av	6012
L_45(65)av	1453
L_45(75)av	2216
L_45(85)av	6034

Standard: GB/T 29293-2012

C Range: 0 - 360DEG  
C Interval: 22.5DEG  
Test Speed: HIGH  
Temperature:25.2DEG  
Operators:DJQ  
Test Date:2019-06-06

Range: 0 - 180DEG  
Interval: 1.0DEG  
Test System:EVERFINE GO-R5000\_V2 SYSTEM V2.0.404.6  
Humidity:46%  
Test Distance:1.809m [K=1.0000]  
Remarks:

Planar Illuminance Curve



C Range: 0 - 360DEG  
 C Interval: 22.5DEG  
 Test Speed: HIGH  
 Temperature: 25.2DEG  
 Operators: DJQ  
 Test Date: 2019-06-06

Page Range: 0 - 180DEG  
 Interval: 1.0DEG  
 Test System: EVERFINE GO-R5000\_V2 SYSTEM V2.0.404.6  
 Humidity: 46%  
 Test Distance: 1.809m [K=1.0000]  
 Remarks:

LUMINOUS DISTRIBUTION INTENSITY DATA

Test:U:119.9V I:0.1296A P:14.99W PF:0.9644 Freq:60.01Hz Lamp Flux:1780.97x1 lm		
NAME: Self-ballasted LED lamps	TYPE:	WEIGHT:
SPEC.:	DIM.:	SERIAL No.:N19LEDGW54505-01
MFR.: /	SUR.:	Shielding Angle:

Table--1

UNIT: cd

C(DEG) g (DEG)	0	22.5	45	67.5	90	112.5	135	157.5	180	202.5	225	247.5	270	292.5	315	337.5			
0	213	213	213	212	212	212	212	212	213	213	213	212	212	212	212	212			
5	213	212	212	212	212	212	212	212	213	213	213	213	213	212	212	212			
10	212	212	212	211	211	211	211	211	212	212	212	213	213	212	212	212			
15	212	211	211	210	210	210	210	210	211	212	212	212	212	212	212	211			
20	211	211	210	209	209	209	209	209	210	211	211	211	212	211	211	211			
25	210	210	209	208	207	207	207	208	209	210	210	211	211	211	211	210			
30	210	209	208	207	206	206	206	207	208	209	209	210	210	210	210	209			
35	208	207	206	205	204	204	204	205	207	207	208	208	209	209	209	208			
40	206	205	204	203	202	202	202	203	205	205	206	207	207	207	207	206			
45	204	203	202	201	200	200	200	201	202	203	203	204	205	205	204	204			
50	200	200	199	198	196	196	197	198	199	200	200	201	201	202	201	200			
55	197	196	195	194	193	192	193	194	195	196	196	197	197	198	197	196			
60	192	191	190	189	188	188	189	189	190	191	192	192	193	193	193	192			
65	187	186	185	184	183	183	183	184	185	186	186	187	187	188	188	187			
70	181	181	180	179	178	178	178	179	179	180	180	181	181	181	182	181			
75	175	174	173	172	172	171	172	172	173	173	174	174	174	175	175	174			
80	168	167	166	166	165	165	165	166	166	167	167	167	167	167	168	167			
85	160	160	159	158	158	158	158	158	159	159	159	159	160	160	160	160			
90	152	152	151	151	150	150	150	150	151	151	151	151	151	151	152	152			
95	144	144	143	143	142	142	142	142	143	143	143	143	143	143	144	144			
100	136	136	135	135	134	134	134	134	134	134	134	134	134	134	135	135			
105	127	127	126	126	125	126	126	125	126	125	125	125	125	125	126	126			
110	118	118	118	117	117	117	117	117	117	116	116	116	116	116	117	117			
115	109	109	109	109	108	108	108	108	108	107	107	107	107	107	108	108			
120	99.6	100	99.7	99.9	99.3	99.4	99.0	99.1	99.0	98.4	98.4	97.8	98.1	97.9	98.8	98.9			
125	90.7	91.3	91.0	91.2	90.6	90.7	90.2	90.3	90.1	89.5	89.6	89.0	89.3	89.0	89.8	89.9			
130	82.1	82.6	82.3	82.6	82.1	82.3	81.7	81.8	81.6	80.8	80.9	80.3	80.6	80.2	81.1	81.3			
135	73.6	74.2	74.0	74.3	73.9	74.0	73.5	73.5	73.2	72.6	72.5	72.0	72.2	72.0	72.7	72.9			
140	65.6	66.1	66.0	66.3	66.0	66.2	65.6	65.5	65.3	64.7	64.6	64.0	64.1	64.0	64.6	64.9			
145	57.9	58.4	58.4	58.7	58.5	58.6	58.1	57.9	57.7	57.1	57.0	56.6	56.6	56.4	57.0	57.3			
150	50.8	51.2	51.3	51.5	51.5	51.5	51.0	50.9	50.6	50.1	49.9	49.5	49.5	49.4	49.9	50.3			
155	44.1	44.5	44.6	44.9	44.9	44.9	44.4	44.2	43.9	43.4	43.3	42.9	42.9	42.8	43.3	43.6			
160	37.9	38.3	38.5	38.7	38.7	38.7	38.3	38.0	37.8	37.3	37.1	36.1	36.8	36.7	37.1	37.5			
165	32.0	32.4	32.6	33.0	32.9	32.8	32.4	32.1	31.7	31.1	30.5	28.9	30.6	29.6	29.6	31.4			
170	24.7	25.4	25.6	25.9	25.8	25.8	25.2	24.9	24.1	23.4	21.2	19.3	18.5	16.3	20.6	24.1			
175	14.9	16.0	16.5	16.9	16.8	16.7	16.1	15.4	12.9	12.6	9.10	6.60	7.02	9.12	11.8	13.0			
180	0.00	0.00	0.00	0.00	0.00	0.00	0.00	0.00	0.00	0.00	0.00	0.00	0.00	0.00	0.00	0.00			

C Range: 0 - 360DEG  
 C Interval: 22.5DEG  
 Test Speed: HIGH  
 Temperature:25.2DEG  
 Operators:DJQ  
 Test Date:2019-06-06

g Range: 0 - 180DEG  
 Interval: 1.0DEG  
 Test System:EVERFINE GO-R5000\_V2 SYSTEM V2.0.404.6  
 Humidity:46%  
 Test Distance:1.809m [K=1.0000]  
 Remarks: