

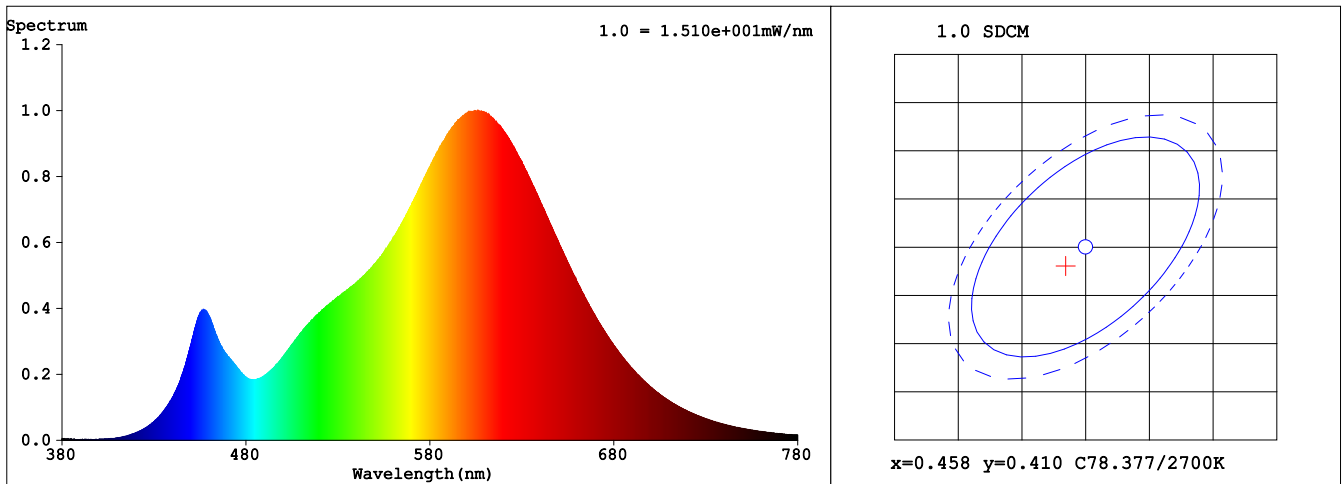
Spectrum Test Report

Sample	:	Date	: 2019-06-22 04:18:58
Specification	:	Sam. Status	:
Sample No.	: BR30-7.5-827-DIM	Standard	:
Manufacturer	: RAB Lighting Inc	Instrument	: HaasSuite(EVERFINE)
Remark	:	Test by	: huaWenJun (2M)

Test Condition

Temperature	: 25.4Deg	RH	: 30.1%
WL Range	: 380nm-780nm	IP	: 58940 (90%)
Test Mode	: Fast Test	T	: 273 ms
Sensitivity	: High		

Spectrum



Colorimetric Parameters

Chromaticity Coordinate: $x = 0.4561$ $y = 0.4079$ / $u' = 0.2613$ $v' = 0.5257$ ($duv = -6.98e-04$)

CCT= 2732K Prcp WL: $L_d = 584.3nm$ Purity=59.3%

Peak WL: $L_p = 606nm$ FWHM: =113.9nm Ratio:R=24.8% G=72.8% B=2.4%

Render Index: $R_a = 81.7$ TM30:Rf=81 Rg=95

R1 =81 R2 =92 R3 =94 R4 =78 R5 =81 R6 =92 R7 =80

R8 =55 R9 =5 R10=83 R11=77 R12=75 R13=84 R14=98 R15=73

LEVEL:OUT WHITE:ANSI_2700K

Photometric & Radiometric Parameters

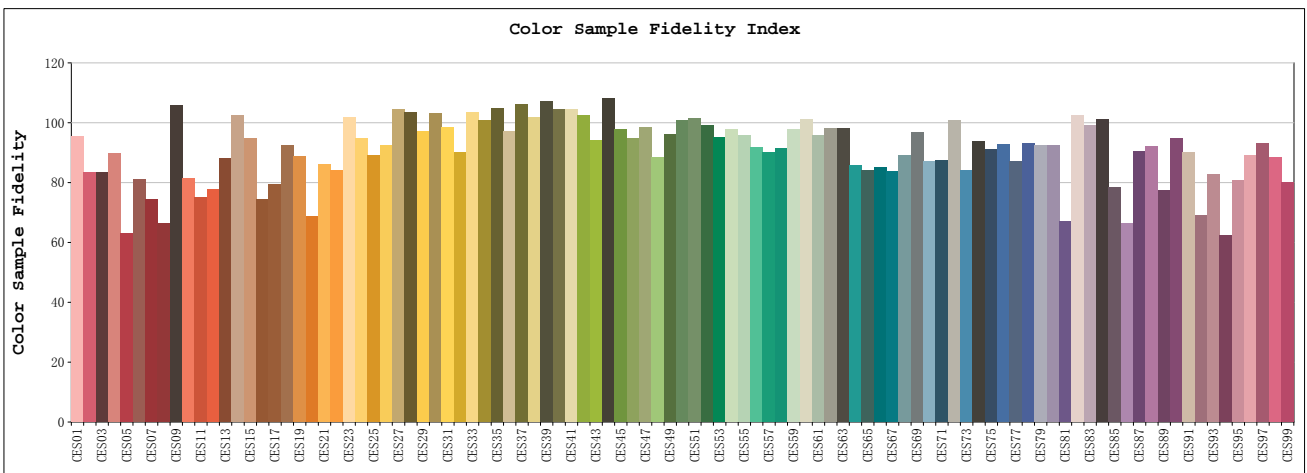
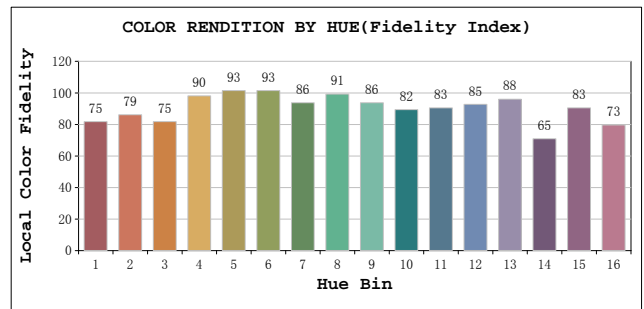
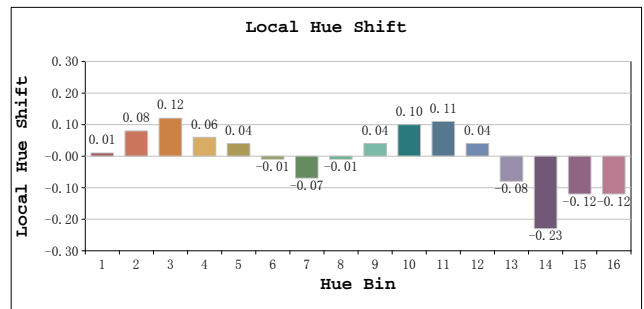
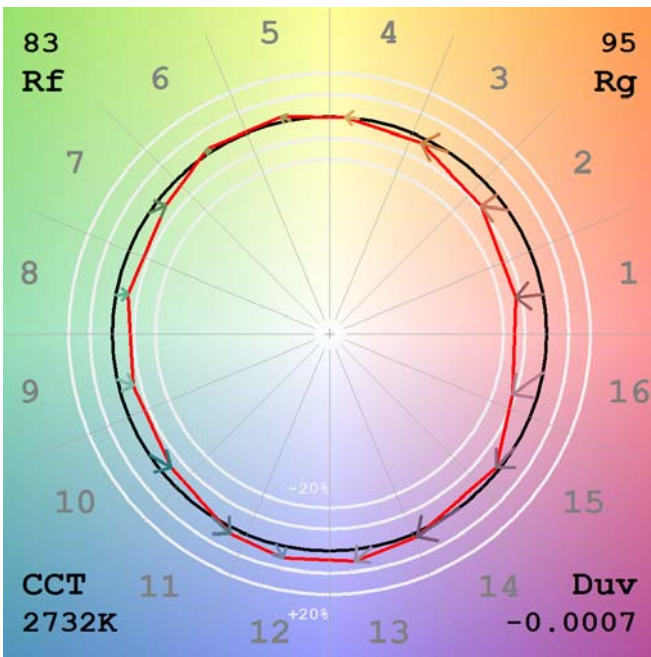
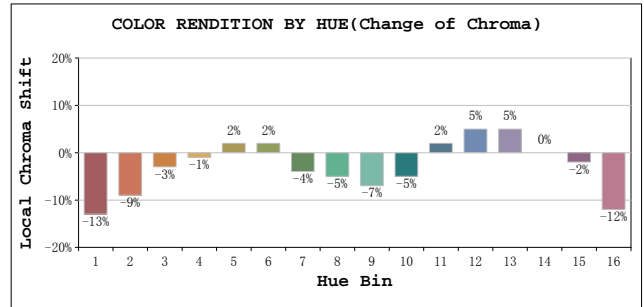
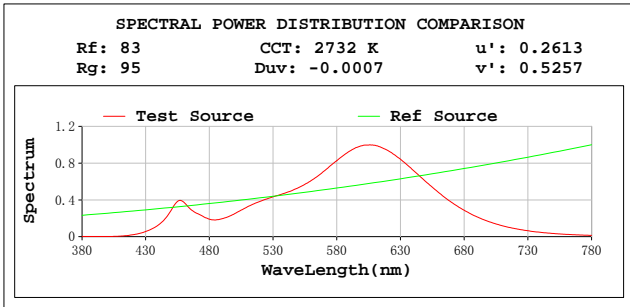
Flux = 687.11 lm Eff. : 99.15 lm/W $F_e = 2.1184 W$

Flux of emitted photons($\mu mol/s$):10.388 Flu. and blue light ratio:9.612 Fluorescent eff.:257.2

Electrical parameters

V = 119.95 V I = 0.06220 A P = 6.930 W PF = 0.9288

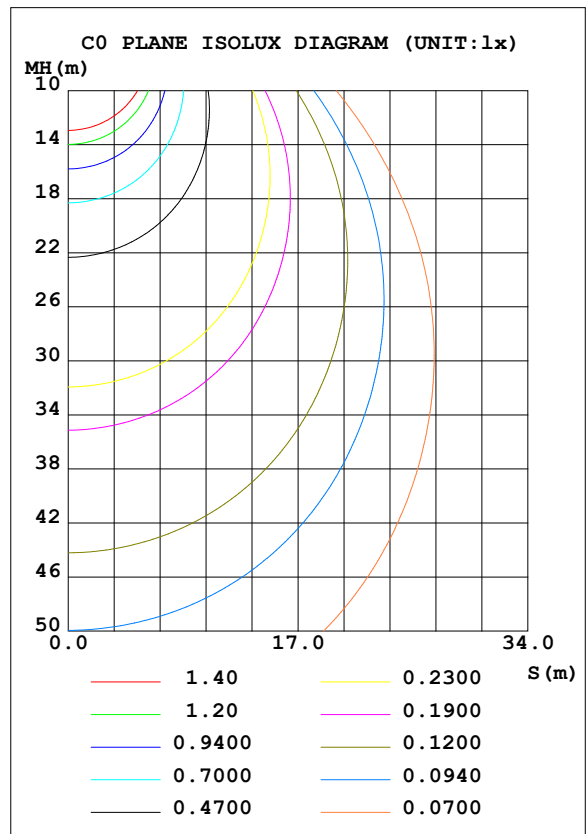
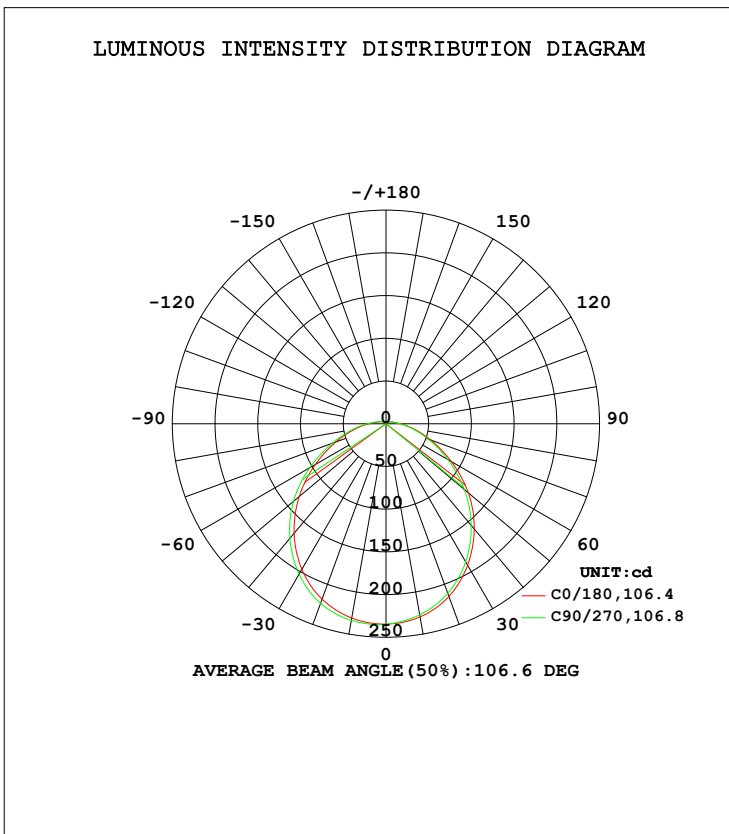
TM30



LUMINAIRE PHOTOMETRIC TEST REPORT

Test:U:120.0V I:0.0618A P:6.920W PF:0.9328 Freq:0Hz Lamp Flux:694.926x1 lm		
NAME: BR30-7.5-827-DIM	TYPE:	WEIGHT:
SPEC.:	DIM.:	SERIAL No.:
MFR.: RAB Lighting Inc	SUR.:	Shielding Angle:

DATA OF LAMP		PHOTOMETRIC DATA Eff: 100.42 lm/W			
MODEL		I _{max} (cd)	235.2	S/MH (C0/180)	1.25
NOMINAL POWER (W)		LOR (%)	100.0	S/MH (C90/270)	1.28
RATED VOLTAGE (V)	120	TOTAL FLUX (lm)	694.93	η UP, DN (C0-180)	2.4, 45.1
NOMINAL FLUX (lm)	694.926	CIE CLASS	DIRECT	η UP, DN (C180-360)	2.8, 49.7
LAMPS INSIDE	1	η up (%)	5.2	CIBSE SHR NOM	1.25
TEST VOLTAGE (V)	120	η down (%)	94.8	CIBSE SHR MAX	1.35



C Range: 0 - 360DEG
 C Interval: 22.5DEG
 Test Speed: HIGH
 Temperature: 25.3DEG
 Operators: ZMB
 Test Date: 2019-06-21

γ Range: 0 - 180DEG
 γ Interval: 0.5DEG
 Test System: EVERFINE GO-R5000_V2 SYSTEM V2.0.366
 Humidity: 28.2%
 Test Distance: 1.191m [K=1.0000]
 Remarks:

ZONAL FLUX DIAGRAM

ZONAL FLUX DIAGRAM:

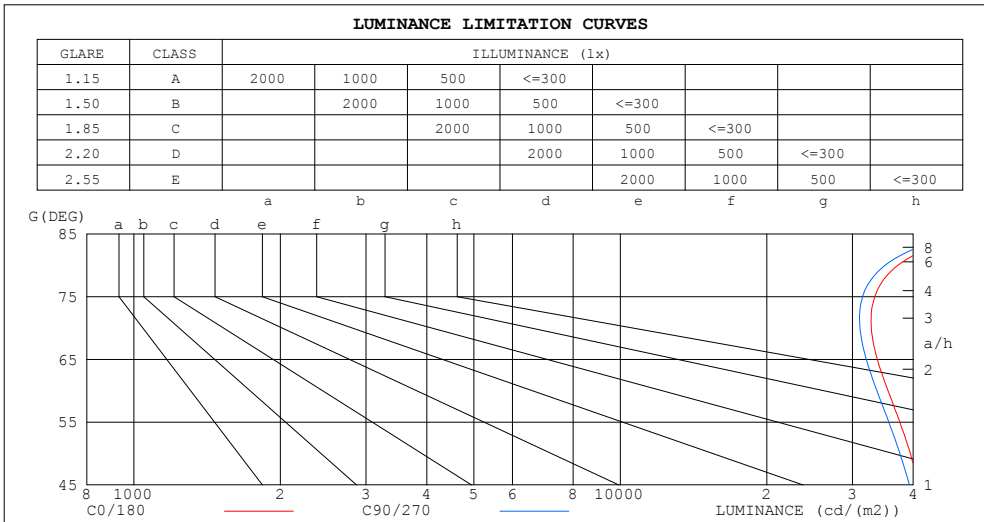
γ	C0	C45	C90	C135	C180	C225	C270	C315	γ	Φ zone	Φ total	%lum, lamp
5	233.1	232.1	231.8	232.5	233.8	234.9	235.2	234.4	0- 5	5.595	5.595	0.81,0.81
10	229.6	227.6	227.1	228.3	230.9	233.2	233.7	232.2	5- 10	16.59	22.19	3.19,3.19
15	223.6	220.8	220.3	222.1	225.8	229.2	229.9	227.6	10- 15	27.01	49.19	7.08,7.08
20	215.1	211.5	211.3	213.7	218.5	223.0	223.6	220.4	15- 20	36.44	85.63	12.3,12.3
25	204.2	199.9	199.9	203.2	208.8	214.1	214.7	210.6	20- 25	44.48	130.1	18.7,18.7
30	191.1	186.2	186.5	190.5	196.9	202.8	203.4	198.6	25- 30	50.80	180.9	26,26
35	176.5	171.1	171.5	176.0	182.9	189.3	190.0	184.7	30- 35	55.17	236.1	34,34
40	160.7	155.0	155.2	160.1	167.3	174.2	175.0	169.5	35- 40	57.52	293.6	42.3,42.3
45	143.8	137.7	137.8	143.0	150.4	157.7	158.8	153.0	40- 45	57.82	351.4	50.6,50.6
50	125.8	119.6	119.7	125.0	132.5	139.9	141.2	135.2	45- 50	56.09	407.5	58.6,58.6
55	106.8	100.9	101.4	106.6	114.2	121.3	122.4	116.1	50- 55	52.39	459.9	66.2,66.2
60	88.06	82.77	83.54	88.52	95.67	101.9	102.9	96.69	55- 60	47.02	506.9	72.9,72.9
65	70.77	66.31	67.16	71.68	78.18	83.46	84.09	78.33	60- 65	40.62	547.5	78.8,78.8
70	55.64	51.90	52.73	56.75	62.51	66.96	67.17	62.15	65- 70	33.93	581.5	83.7,83.7
75	42.80	39.70	40.40	43.90	48.80	52.42	52.52	48.21	70- 75	27.49	609.0	87.6,87.6
80	32.04	29.52	30.17	33.09	37.20	40.13	40.10	36.51	75- 80	21.56	630.5	90.7,90.7
85	23.54	21.52	22.06	24.38	27.59	29.89	29.87	26.96	80- 85	16.36	646.9	93.1,93.1
90	17.15	15.78	16.16	17.76	20.17	21.85	21.89	19.71	85- 90	12.09	659.0	94.8,94.8
95	12.86	11.97	12.28	13.32	14.88	16.03	16.07	14.61	90- 95	8.898	667.9	96.1,96.1
100	10.02	9.424	9.701	10.41	11.42	12.16	12.18	11.20	95-100	6.688	674.6	97.1,97.1
105	7.968	7.532	7.786	8.342	9.055	9.542	9.559	8.844	100-105	5.160	679.7	97.8,97.8
110	6.362	6.034	6.255	6.707	7.250	7.622	7.619	7.041	105-110	4.021	683.8	98.4,98.4
115	5.054	4.811	5.008	5.377	5.797	6.084	6.067	5.590	110-115	3.113	686.9	98.8,98.8
120	3.984	3.806	3.984	4.287	4.597	4.819	4.789	4.392	115-120	2.378	689.2	99.2,99.2
125	3.109	2.979	3.135	3.385	3.628	3.799	3.757	3.425	120-125	1.783	691.0	99.4,99.4
130	2.381	2.295	2.429	2.642	2.830	2.960	2.906	2.628	125-130	1.309	692.3	99.6,99.6
135	1.790	1.739	1.855	2.029	2.177	2.271	2.207	1.974	130-135	0.9350	693.3	99.8,99.8
140	1.311	1.290	1.390	1.535	1.640	1.705	1.633	1.444	135-140	0.6462	693.9	99.9,99.9
145	0.9289	0.9289	1.016	1.138	1.201	1.243	1.169	1.019	140-145	0.4284	694.3	99.9,99.9
150	0.6285	0.6431	0.7206	0.8187	0.8471	0.8684	0.7972	0.6834	145-150	0.2690	694.6	100,100
155	0.4022	0.4302	0.4994	0.5714	0.5718	0.5735	0.5014	0.4202	150-155	0.1572	694.8	100,100
160	0.2474	0.2890	0.3456	0.3947	0.3734	0.3579	0.2823	0.2191	155-160	0.0844	694.9	100,100
165	0.1581	0.2047	0.2490	0.2832	0.2516	0.2231	0.1406	0.0811	160-165	0.0418	694.9	100,100
170	0.0982	0.1378	0.1750	0.1996	0.1730	0.1506	0.0806	0.0317	165-170	0.0195	694.9	100,100
175	0.0249	0.0389	0.0722	0.0851	0.0907	0.0764	0.0291	0.0170	170-175	0.0073	694.9	100,100
180	0.0005	0.0005	0.0004	0.0003	0.0002	0.0005	0.0006	0.0006	175-180	0.0006	694.9	100,100
DEG	LUMINOUS INTENSITY:cd								UNIT:lm			

C Range: 0 - 360DEG
 C Interval: 22.5DEG
 Test Speed: HIGH
 Temperature:25.3DEG
 Operators:ZMB
 Test Date:2019-06-21

γ Range: 0 - 180DEG
 γ Interval: 0.5DEG
 Test System:EVERFINE GO-R5000_V2 SYSTEM V2.0.366
 Humidity:28.2%
 Test Distance:1.191m [K=1.0000]
 Remarks:

LUMINANCE LIMITATION CURVES

Test:U:120.0V I:0.0618A P:6.920W PF:0.9328 Freq:0Hz Lamp Flux:694.926x1 lm		
NAME: BR30-7.5-827-DIM	TYPE:	WEIGHT:
SPEC.:	DIM.:	SERIAL No.:
MFR.: RAB Lighting Inc	SUR.:	Shielding Angle:



LUMINANCE cd/(m2)		
G (DEG)	C0/180	C90/270
85	54459	51032
80	37205	35024
75	33339	31474
70	32799	31084
65	33760	32039
60	35507	33687
55	37534	35634
50	39461	37549
45	41011	39302

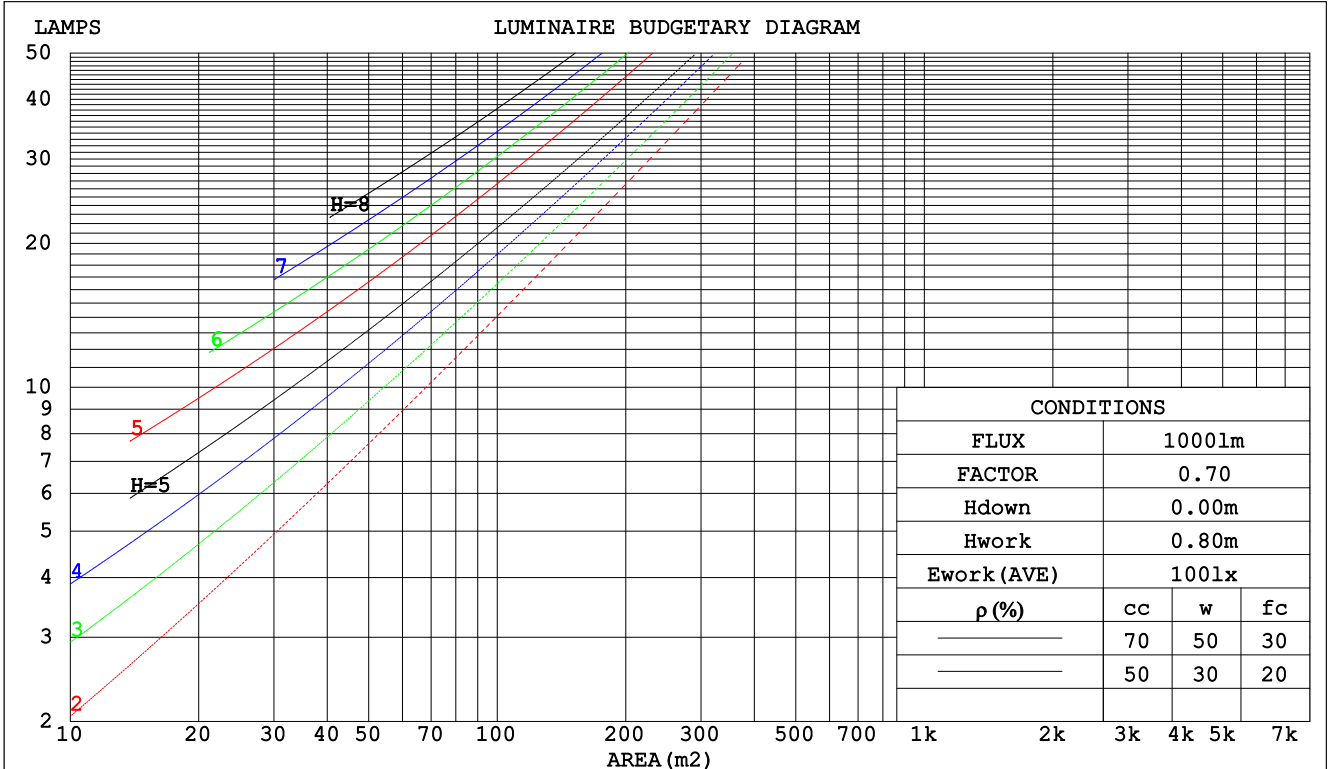
C Range: 0 - 360DEG
 C Interval: 22.5DEG
 Test Speed: HIGH
 Temperature:25.3DEG
 Operators:ZMB
 Test Date:2019-06-21

γ Range: 0 - 180DEG
 γ Interval: 0.5DEG
 Test System:EVERFINE GO-R5000_V2 SYSTEM V2.0.366
 Humidity:28.2%
 Test Distance:1.191m [K=1.0000]
 Remarks:

CU AND LUMINAIRE BUDGETARY ESTIMATE DIAGRAM

Test:U:120.0V I:0.0618A P:6.920W PF:0.9328 Freq:0Hz Lamp Flux:694.926x1 lm		
NAME: BR30-7.5-827-DIM	TYPE:	WEIGHT:
SPEC.:	DIM.:	SERIAL No.:
MFR.: RAB Lighting Inc	SUR.:	Shielding Angle:

pcc	80%			70%			50%			30%			10%			0
pw	50%	30%	10%	50%	30%	10%	50%	30%	10%	50%	30%	10%	50%	30%	10%	0
pfc	20%			20%			20%			20%			20%			0
RCR	RCR:Room Cavity Ratio						Coefficients of Utilization(CU)									
0.0	1.18	1.18	1.18	1.14	1.14	1.14	1.08	1.08	1.08	1.03	1.03	1.03	.97	.97	.97	.95
1.0	1.02	.97	.93	.99	.95	.91	.94	.90	.87	.89	.86	.83	.84	.82	.80	.78
2.0	.88	.81	.75	.86	.80	.74	.82	.76	.72	.78	.73	.69	.74	.70	.67	.64
3.0	.78	.69	.63	.76	.68	.62	.72	.65	.60	.68	.63	.58	.65	.61	.57	.54
4.0	.69	.60	.53	.67	.59	.53	.64	.57	.51	.61	.55	.50	.58	.53	.49	.46
5.0	.62	.53	.46	.60	.52	.45	.57	.50	.44	.55	.48	.43	.53	.47	.43	.40
6.0	.55	.47	.40	.54	.46	.40	.52	.44	.39	.50	.43	.38	.48	.42	.37	.35
7.0	.50	.42	.35	.49	.41	.35	.47	.40	.34	.45	.39	.34	.44	.38	.33	.31
8.0	.46	.37	.32	.45	.37	.31	.43	.36	.31	.42	.35	.30	.40	.34	.30	.28
9.0	.42	.34	.28	.41	.34	.28	.40	.33	.28	.38	.32	.27	.37	.31	.27	.25
10.0	.39	.31	.26	.38	.31	.26	.37	.30	.25	.36	.29	.25	.34	.29	.25	.23



C Range: 0 - 360DEG
 C Interval: 22.5DEG
 Test Speed: HIGH
 Temperature:25.3DEG
 Operators:ZMB
 Test Date:2019-06-21

γ Range: 0 - 180DEG
 γ Interval: 0.5DEG
 Test System:EVERFINE GO-R5000_V2 SYSTEM V2.0.366
 Humidity:28.2%
 Test Distance:1.191m [K=1.0000]
 Remarks:

WEC AND CCEC

Test:U:120.0V I:0.0618A P:6.920W PF:0.9328 Freq:0Hz Lamp Flux:694.926x1 lm		
NAME: BR30-7.5-827-DIM	TYPE:	WEIGHT:
SPEC.:	DIM.:	SERIAL No.:
MFR.: RAB Lighting Inc	SUR.:	Shielding Angle:

ρcc	80%			70%			50%			30%			10%			0
ρw	50%	30%	10%	50%	30%	10%	50%	30%	10%	50%	30%	10%	50%	30%	10%	0
ρfc	20%			20%			20%			20%			20%			0
RCR	RCR:Room Cavity Ratio						Wall Exitance Coefficients(WEC)									
0.0																
1.0	.329	.187	.059	.321	.183	.058	.304	.175	.056	.289	.167	.054	.276	.160	.052	
2.0	.299	.164	.050	.291	.160	.049	.277	.154	.048	.264	.148	.046	.251	.142	.045	
3.0	.273	.145	.043	.266	.142	.043	.253	.137	.042	.241	.132	.041	.230	.127	.039	
4.0	.250	.130	.038	.244	.128	.038	.232	.123	.037	.221	.119	.036	.211	.115	.035	
5.0	.230	.117	.034	.225	.115	.034	.214	.112	.033	.205	.108	.032	.196	.104	.031	
6.0	.213	.107	.031	.208	.105	.030	.199	.102	.030	.190	.099	.029	.182	.096	.028	
7.0	.198	.098	.028	.193	.096	.027	.185	.093	.027	.177	.091	.026	.170	.088	.026	
8.0	.184	.090	.025	.180	.089	.025	.173	.086	.025	.166	.084	.024	.159	.082	.024	
9.0	.173	.084	.023	.169	.082	.023	.162	.080	.023	.156	.078	.022	.150	.076	.022	
10.0	.162	.078	.022	.159	.077	.021	.153	.075	.021	.147	.073	.021	.141	.071	.020	

ρcc	80%			70%			50%			30%			10%			0
ρw	50%	30%	10%	50%	30%	10%	50%	30%	10%	50%	30%	10%	50%	30%	10%	0
ρfc	20%			20%			20%			20%			20%			0
RCR	RCR:Room Cavity Ratio						Ceiling Cavity Exitance Coefficients(CCEC)									
0.0	.230	.230	.230	.196	.196	.196	.134	.134	.134	.077	.077	.077	.025	.025	.025	
1.0	.221	.196	.173	.189	.168	.148	.130	.116	.103	.075	.067	.060	.024	.022	.019	
2.0	.213	.172	.137	.183	.148	.119	.125	.102	.083	.072	.060	.048	.023	.019	.016	
3.0	.205	.155	.114	.176	.133	.099	.121	.093	.069	.070	.054	.041	.022	.018	.013	
4.0	.197	.141	.099	.169	.122	.086	.116	.085	.060	.067	.050	.036	.022	.016	.012	
5.0	.190	.131	.088	.163	.113	.076	.112	.079	.054	.065	.047	.032	.021	.015	.011	
6.0	.183	.123	.080	.157	.106	.070	.108	.074	.049	.063	.044	.029	.020	.014	.010	
7.0	.176	.116	.074	.151	.101	.065	.104	.070	.046	.061	.042	.027	.020	.014	.009	
8.0	.169	.110	.070	.146	.096	.061	.101	.067	.043	.059	.040	.026	.019	.013	.009	
9.0	.163	.105	.066	.141	.091	.058	.097	.064	.041	.057	.038	.024	.018	.012	.008	
10.0	.158	.101	.064	.136	.088	.055	.094	.062	.039	.055	.037	.024	.018	.012	.008	

C Range: 0 - 360DEG
 C Interval: 22.5DEG
 Test Speed: HIGH
 Temperature:25.3DEG
 Operators:ZMB
 Test Date:2019-06-21

γ Range: 0 - 180DEG
 γ Interval: 0.5DEG
 Test System:EVERFINE GO-R5000_V2 SYSTEM V2.0.366
 Humidity:28.2%
 Test Distance:1.191m [K=1.0000]
 Remarks:

UGR(Unified Glare Rating) Table

Test:U:120.0V I:0.0618A P:6.920W PF:0.9328 Freq:0Hz Lamp Flux:694.926x1 lm										
NAME: BR30-7.5-827-DIM					TYPE:			WEIGHT:		
SPEC.:					DIM.:			SERIAL No.:		
MFR.: RAB Lighting Inc					SUR.:			Shielding Angle:		
ceiling/cavity	0.7	0.7	0.5	0.5	0.3	0.7	0.7	0.5	0.5	0.3
walls	0.5	0.3	0.5	0.3	0.3	0.5	0.3	0.5	0.3	0.3
working plane	0.2	0.2	0.2	0.2	0.2	0.2	0.2	0.2	0.2	0.2
Room dimensions	Viewed crosswise					Viewed endwise				
x = 2H y = 2H	24.6	26.1	25.0	26.4	26.7	24.4	25.9	24.8	26.2	26.5
3H	26.1	27.4	26.4	27.7	28.1	25.9	27.2	26.2	27.5	27.9
4H	26.8	28.0	27.2	28.4	28.7	26.5	27.8	26.9	28.1	28.5
6H	27.4	28.7	27.9	29.0	29.4	27.2	28.4	27.6	28.7	29.1
8H	27.8	29.0	28.2	29.3	29.7	27.5	28.7	27.9	29.1	29.5
12H	28.2	29.3	28.6	29.7	30.1	27.9	29.0	28.3	29.4	29.8
4H 2H	25.1	26.4	25.5	26.7	27.1	25.0	26.2	25.3	26.6	26.9
3H	26.8	27.9	27.2	28.3	28.7	26.6	27.7	27.0	28.1	28.5
4H	27.6	28.6	28.1	29.0	29.5	27.4	28.4	27.9	28.8	29.3
6H	28.5	29.4	28.9	29.8	30.3	28.2	29.2	28.7	29.6	30.1
8H	28.9	29.8	29.4	30.2	30.7	28.7	29.5	29.2	30.0	30.5
12H	29.4	30.2	29.9	30.7	31.2	29.2	29.9	29.7	30.4	30.9
8H 4H	27.9	28.7	28.4	29.2	29.7	27.7	28.6	28.2	29.0	29.5
6H	29.0	29.7	29.5	30.2	30.7	28.8	29.5	29.3	30.0	30.5
8H	29.6	30.2	30.1	30.7	31.3	29.4	30.0	29.9	30.5	31.1
12H	30.3	30.8	30.8	31.4	32.0	30.0	30.6	30.6	31.1	31.7
12H 4H	27.9	28.7	28.4	29.2	29.7	27.8	28.5	28.3	29.0	29.5
6H	29.1	29.7	29.6	30.2	30.8	28.9	29.5	29.4	30.1	30.6
8H	29.8	30.3	30.3	30.9	31.4	29.6	30.1	30.1	30.7	31.2
Variations with the observer position at spacings:										
S = 1.0H	+ 0.1 / - 0.2					+ 0.2 / - 0.2				
1.5H	+ 0.2 / - 0.3					+ 0.2 / - 0.3				
2.0H	+ 0.2 / - 0.3					+ 0.1 / - 0.2				

CIE Pub.117, 694.9 lm Total Lamp Luminous Flux Corrected (8log(F/F0) = -1.3)

C Range: 0 - 360DEG
 C Interval: 22.5DEG
 Test Speed: HIGH
 Temperature:25.3DEG
 Operators:ZMB
 Test Date:2019-06-21

γ Range: 0 - 180DEG
 γ Interval: 0.5DEG
 Test System:EVERFINE GO-R5000_V2 SYSTEM V2.0.366
 Humidity:28.2%
 Test Distance:1.191m [K=1.0000]
 Remarks:

UTILIZATION FACTORS TABLE

Test:U:120.0V I:0.0618A P:6.920W PF:0.9328 Freq:0Hz Lamp Flux:694.926x1 lm		
NAME: BR30-7.5-827-DIM	TYPE:	WEIGHT:
SPEC.:	DIM.:	SERIAL No.:
MFR.: RAB Lighting Inc	SUR.:	Shielding Angle:

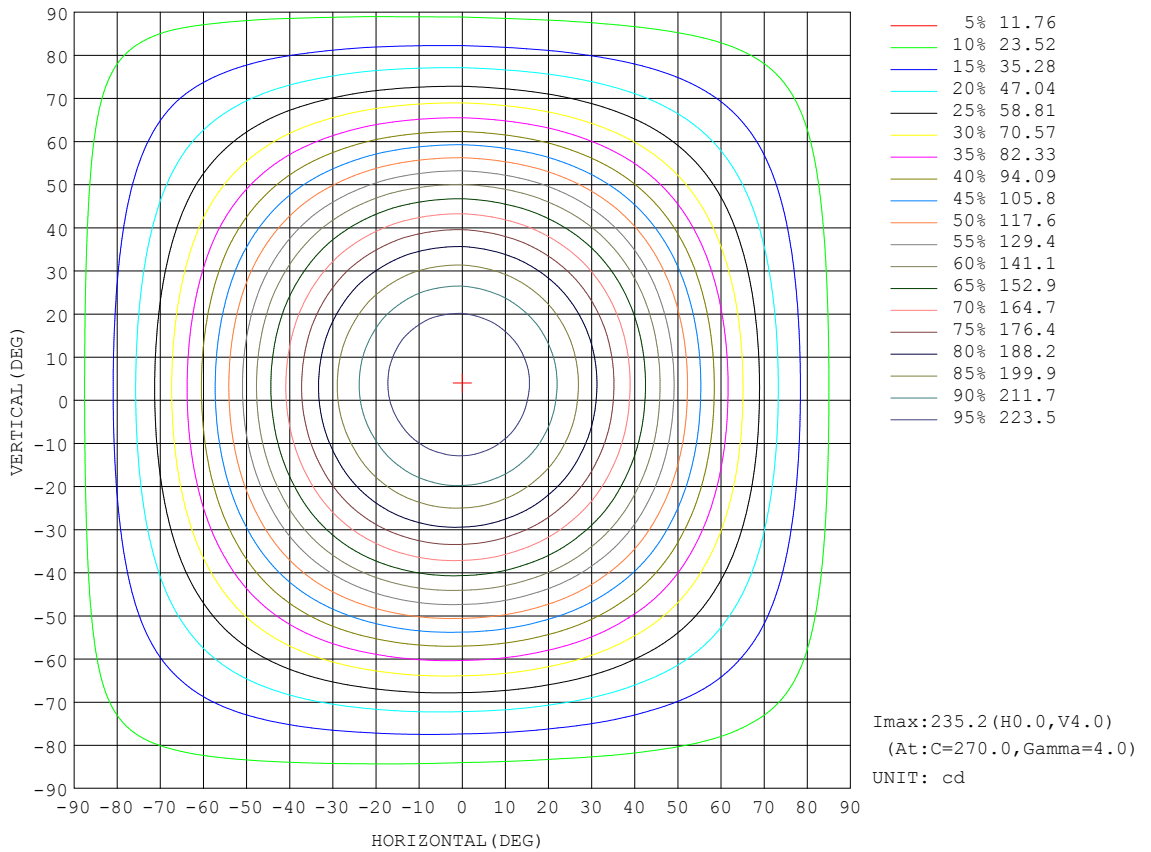
REFLECTANCE										
Ceiling	0.8	0.8	0.8	0.7	0.7	0.7	0.5	0.5	0.5	0
Walls	0.7	0.5	0.3	0.7	0.5	0.3	0.7	0.5	0.3	0
Working plane	0.2	0.2	0.2	0.2	0.2	0.2	0.2	0.2	0.2	0
ROOM INDEX	UTILIZATION FACTORS (PERCENT) $k(RI) \times RCR = 5$									
k = 0.60	56	44	37	55	44	37	54	43	37	31
0.80	66	54	46	65	53	46	63	52	46	39
1.00	74	62	55	72	62	55	70	63	54	46
1.25	81	70	62	79	69	62	76	67	61	53
1.50	86	75	68	84	74	67	80	72	66	58
2.00	92	83	76	90	82	75	86	79	74	65
2.50	96	88	81	94	86	80	89	83	78	69
3.00	100	92	86	97	90	85	92	87	82	72
4.00	104	97	92	101	95	90	96	91	87	77
5.00	106	101	96	103	98	94	98	94	91	80
ROOM INDEX	UF(total)									Direct
According to DIN EN 13032-2 2004			Suspended				SHRNOM = 1.25			

C Range: 0 - 360DEG
 C Interval: 22.5DEG
 Test Speed: HIGH
 Temperature:25.3DEG
 Operators:ZMB
 Test Date:2019-06-21

γ Range: 0 - 180DEG
 γ Interval: 0.5DEG
 Test System:EVERFINE GO-R5000_V2 SYSTEM V2.0.366
 Humidity:28.2%
 Test Distance:1.191m [K=1.0000]
 Remarks:

ISOCANDELA DIAGRAM

Test:U:120.0V I:0.0618A P:6.920W PF:0.9328 Freq:0Hz Lamp Flux:694.926x1 lm		
NAME: BR30-7.5-827-DIM	TYPE:	WEIGHT:
SPEC.:	DIM.:	SERIAL No.:
MFR.: RAB Lighting Inc	SUR.:	Shielding Angle:

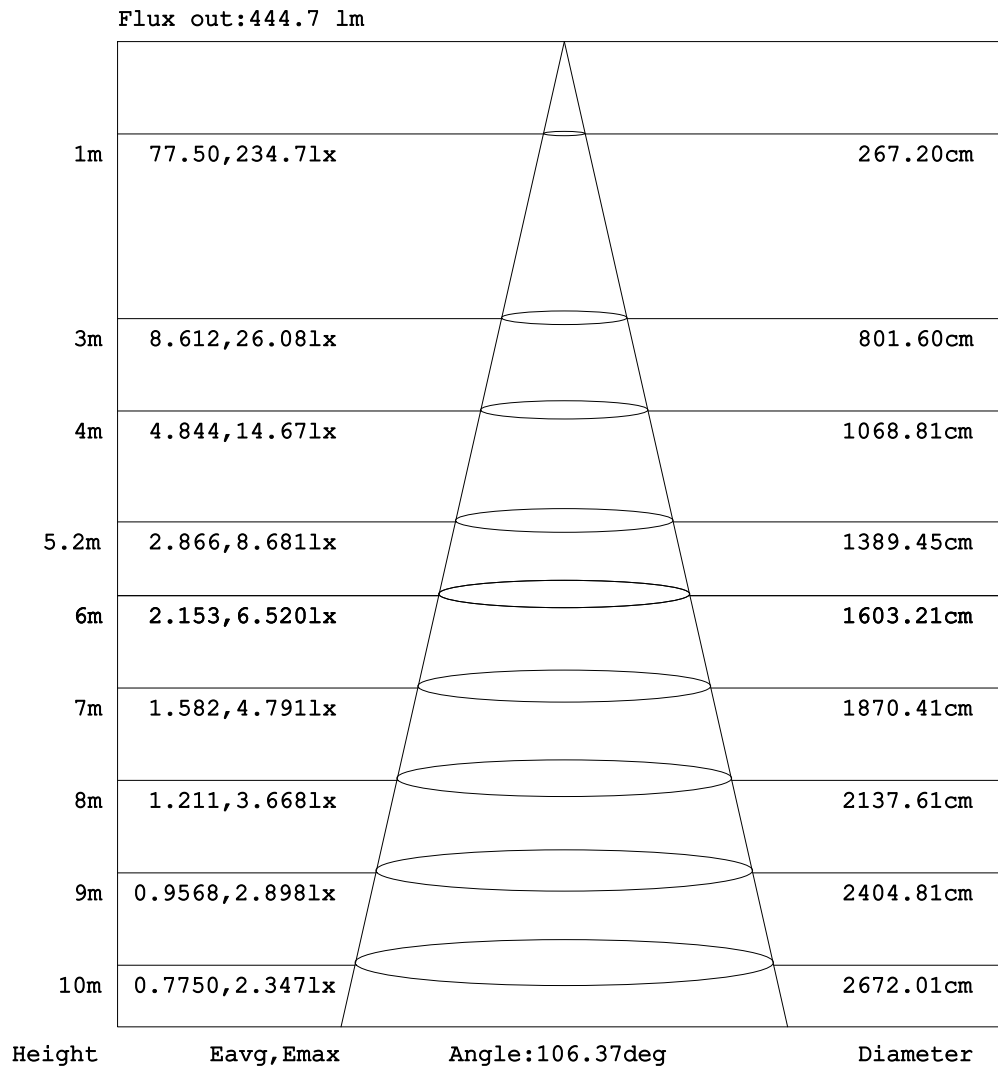


C Range: 0 - 360DEG
 C Interval: 22.5DEG
 Test Speed: HIGH
 Temperature:25.3DEG
 Operators:ZMB
 Test Date:2019-06-21

γ Range: 0 - 180DEG
 γ Interval: 0.5DEG
 Test System:EVERFINE GO-R5000_V2 SYSTEM V2.0.366
 Humidity:28.2%
 Test Distance:1.191m [K=1.0000]
 Remarks:

AAI Figure

Test:U:120.0V I:0.0618A P:6.920W PF:0.9328 Freq:0Hz Lamp Flux:694.926x1 lm		
NAME: BR30-7.5-827-DIM	TYPE:	WEIGHT:
SPEC.:	DIM.:	SERIAL No.:
MFR.: RAB Lighting Inc	SUR.:	Shielding Angle:



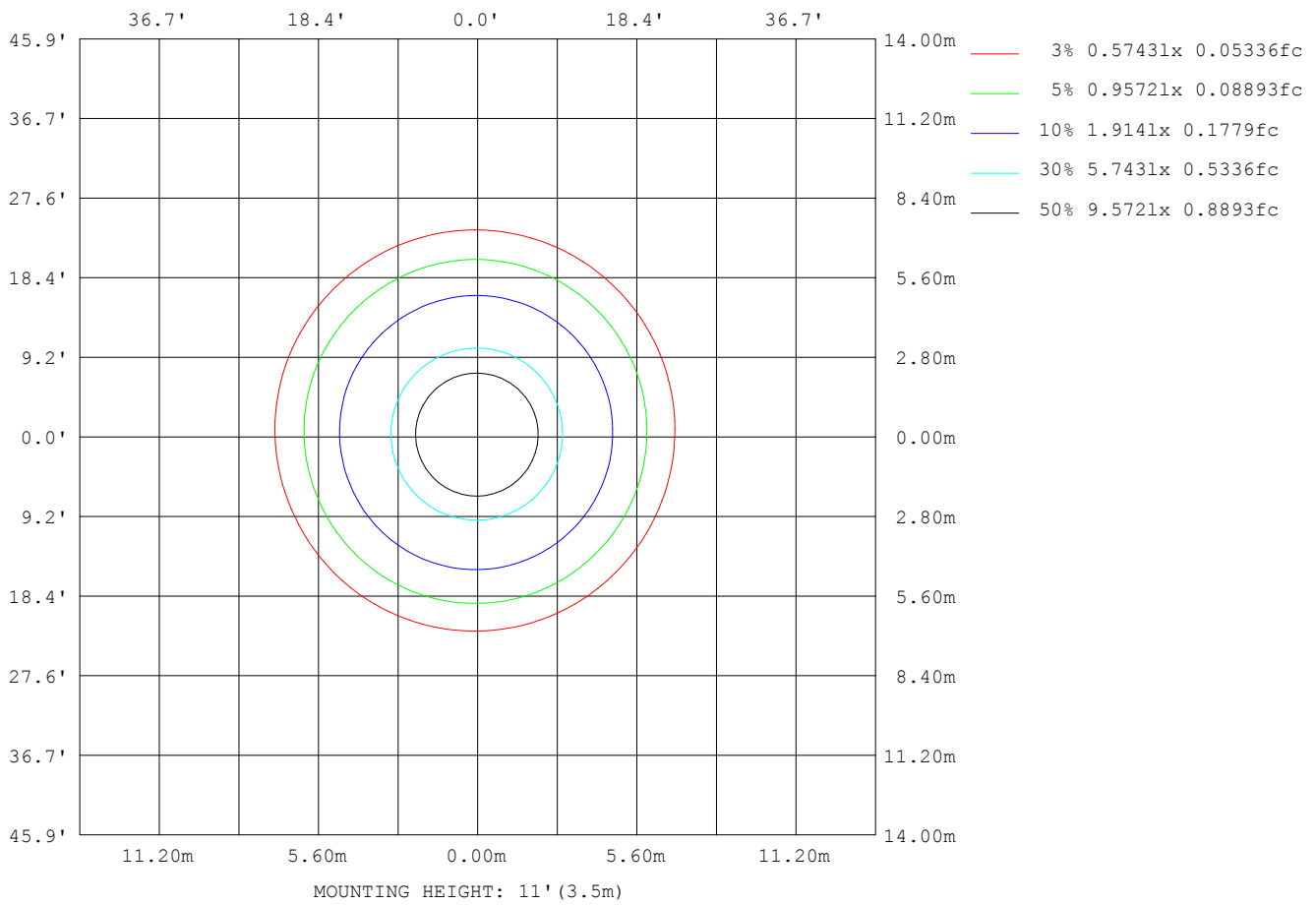
Note:The Curves indicate the illuminated area and the average illumination when the luminaire is at different distance.

C Range: 0 - 360DEG
 C Interval: 22.5DEG
 Test Speed: HIGH
 Temperature:25.3DEG
 Operators:ZMB
 Test Date:2019-06-21

γ Range: 0 - 180DEG
 γ Interval: 0.5DEG
 Test System:EVERFINE GO-R5000_V2 SYSTEM V2.0.366
 Humidity:28.2%
 Test Distance:1.191m [K=1.0000]
 Remarks:

ISOLUX DIAGRAM

Test:U:120.0V I:0.0618A P:6.920W PF:0.9328 Freq:0Hz Lamp Flux:694.926x1 lm		
NAME: BR30-7.5-827-DIM	TYPE:	WEIGHT:
SPEC.:	DIM.:	SERIAL No.:
MFR.: RAB Lighting Inc	SUR.:	Shielding Angle:



C Range: 0 - 360DEG
 C Interval: 22.5DEG
 Test Speed: HIGH
 Temperature:25.3DEG
 Operators:ZMB
 Test Date:2019-06-21

γ Range: 0 - 180DEG
 γ Interval: 0.5DEG
 Test System:EVERFINE GO-R5000_V2 SYSTEM V2.0.366
 Humidity:28.2%
 Test Distance:1.191m [K=1.0000]
 Remarks:

LED Avg.L Report

Test:U:120.0V I:0.0618A P:6.920W PF:0.9328 Freq:0Hz Lamp Flux:694.926x1 lm		
NAME: BR30-7.5-827-DIM	TYPE:	WEIGHT:
SPEC.:	DIM.:	SERIAL No.:
MFR.: RAB Lighting Inc	SUR.:	Shielding Angle:

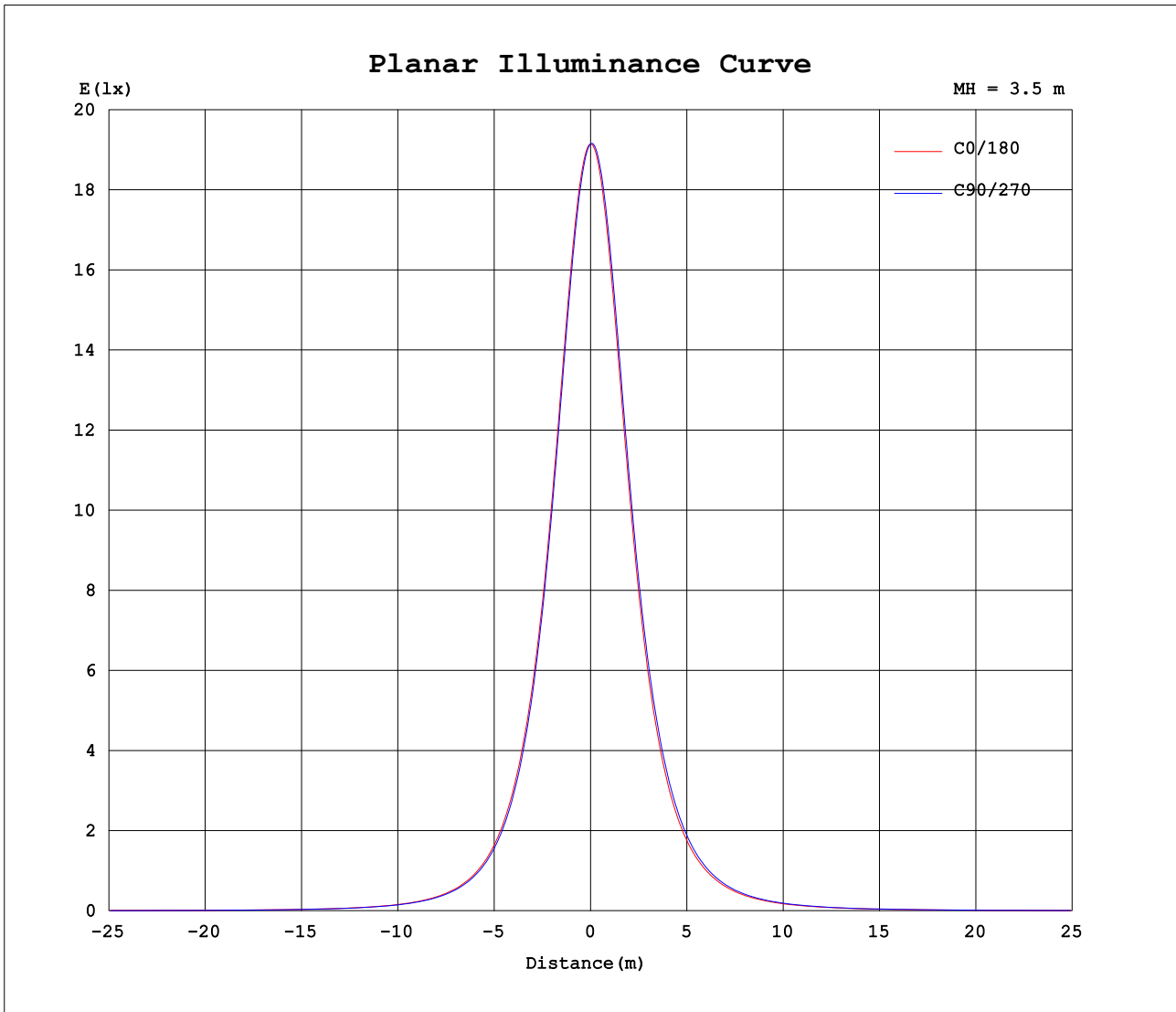
AvgL	cd/m2
L_0~180 (65) av	35529
L_0~180 (75) av	35676
L_0~180 (85) av	59135
L_90~270 (65) av	36078
L_90~270 (75) av	36193
L_90~270 (85) av	60067
L_45 (65) av	35754
L_45 (75) av	35876
L_45 (85) av	59428

Standard: GB/T 29293-2012

C Range: 0 - 360DEG
C Interval: 22.5DEG
Test Speed: HIGH
Temperature:25.3DEG
Operators:ZMB
Test Date:2019-06-21

γ Range: 0 - 180DEG
 γ Interval: 0.5DEG
Test System:EVERFINE GO-R5000_V2 SYSTEM V2.0.366
Humidity:28.2%
Test Distance:1.191m [K=1.0000]
Remarks:

Planar Illuminance Curve



C Range: 0 - 360DEG
 C Interval: 22.5DEG
 Test Speed: HIGH
 Temperature:25.3DEG
 Operators:ZMB
 Test Date:2019-06-21

γ Range: 0 - 180DEG
 γ Interval: 0.5DEG
 Test System:EVERFINE GO-R5000_V2 SYSTEM V2.0.366
 Humidity:28.2%
 Test Distance:1.191m [K=1.0000]
 Remarks:

LUMINOUS DISTRIBUTION INTENSITY DATA

Test:U:120.0V I:0.0618A P:6.920W PF:0.9328 Freq:0Hz Lamp Flux:694.926x1 lm		
NAME: BR30-7.5-827-DIM	TYPE:	WEIGHT:
SPEC.:	DIM.:	SERIAL No.:
MFR.: RAB Lighting Inc	SUR.:	Shielding Angle:

Table--1

UNIT: cd

C (DEG) \ γ (DEG)	0	22.5	45	67.5	90	112.5	135	157.5	180	202.5	225	247.5	270	292.5	315	337.5			
0	235	235	235	235	235	234	235	235	235	235	235	235	235	234	235	235			
5	233	233	232	232	232	232	232	233	234	234	235	235	235	235	234	234			
10	230	228	228	227	227	227	228	229	231	232	233	234	234	233	232	231			
15	224	222	221	220	220	221	222	224	226	228	229	230	230	229	228	226			
20	215	213	212	211	211	212	214	216	219	221	223	224	224	222	220	218			
25	204	202	200	199	200	201	203	205	209	212	214	215	215	213	211	208			
30	191	188	186	186	187	188	190	193	197	200	203	204	203	201	199	195			
35	176	173	171	171	171	173	176	179	183	187	189	190	190	188	185	181			
40	161	157	155	154	155	157	160	163	167	171	174	175	175	173	169	165			
45	144	140	138	137	138	140	143	146	150	155	158	159	159	157	153	149			
50	126	122	120	119	120	122	125	128	133	137	140	141	141	139	135	131			
55	107	103	101	101	101	104	107	109	114	119	121	123	122	120	116	112			
60	88.1	84.7	82.8	82.7	83.5	85.7	88.5	91.3	95.7	99.7	102	103	103	100	96.7	92.5			
65	70.8	67.9	66.3	66.3	67.2	69.1	71.7	74.2	78.2	81.7	83.5	84.4	84.1	81.8	78.3	74.6			
70	55.6	53.2	51.9	51.9	52.7	54.5	56.8	59.1	62.5	65.4	67.0	67.6	67.2	65.1	62.2	59.0			
75	42.8	40.8	39.7	39.7	40.4	41.9	43.9	46.0	48.8	51.2	52.4	52.9	52.5	50.8	48.2	45.5			
80	32.0	30.4	29.5	29.5	30.2	31.4	33.1	34.8	37.2	39.1	40.1	40.5	40.1	38.6	36.5	34.2			
85	23.5	22.2	21.5	21.6	22.1	23.1	24.4	25.8	27.6	29.1	29.9	30.2	29.9	28.7	27.0	25.2			
90	17.2	16.3	15.8	15.8	16.2	16.8	17.8	18.8	20.2	21.2	21.9	22.1	21.9	21.0	19.7	18.4			
95	12.9	12.3	12.0	12.0	12.3	12.7	13.3	14.0	14.9	15.6	16.0	16.2	16.1	15.5	14.6	13.7			
100	10.0	9.62	9.42	9.50	9.70	10.0	10.4	10.9	11.4	11.9	12.2	12.3	12.2	11.8	11.2	10.6			
105	7.97	7.67	7.53	7.61	7.79	8.04	8.34	8.66	9.06	9.36	9.54	9.63	9.56	9.27	8.84	8.39			
110	6.36	6.13	6.03	6.11	6.25	6.46	6.71	6.96	7.25	7.49	7.62	7.69	7.62	7.38	7.04	6.69			
115	5.05	4.88	4.81	4.87	5.01	5.18	5.38	5.57	5.80	5.98	6.08	6.13	6.07	5.87	5.59	5.31			
120	3.98	3.85	3.81	3.86	3.98	4.13	4.29	4.44	4.60	4.74	4.82	4.85	4.79	4.62	4.39	4.17			
125	3.11	3.00	2.98	3.03	3.13	3.26	3.38	3.51	3.63	3.74	3.80	3.81	3.76	3.61	3.42	3.25			
130	2.38	2.30	2.30	2.34	2.43	2.53	2.64	2.74	2.83	2.92	2.96	2.96	2.91	2.78	2.63	2.50			
135	1.79	1.73	1.74	1.79	1.86	1.94	2.03	2.11	2.18	2.24	2.27	2.26	2.21	2.10	1.97	1.88			
140	1.31	1.28	1.29	1.33	1.39	1.46	1.53	1.59	1.64	1.69	1.71	1.69	1.63	1.54	1.44	1.37			
145	0.93	0.91	0.93	0.97	1.02	1.08	1.14	1.18	1.20	1.23	1.24	1.22	1.17	1.10	1.02	0.97			
150	0.63	0.62	0.64	0.68	0.72	0.77	0.82	0.84	0.85	0.86	0.87	0.85	0.80	0.74	0.68	0.65			
155	0.40	0.40	0.43	0.46	0.50	0.54	0.57	0.58	0.57	0.58	0.57	0.55	0.50	0.46	0.42	0.40			
160	0.25	0.27	0.29	0.32	0.35	0.38	0.39	0.39	0.37	0.37	0.36	0.33	0.28	0.24	0.22	0.21			
165	0.16	0.18	0.20	0.23	0.25	0.27	0.28	0.28	0.25	0.25	0.22	0.19	0.14	0.09	0.08	0.10			
170	0.10	0.12	0.14	0.16	0.17	0.19	0.20	0.19	0.17	0.17	0.15	0.12	0.08	0.05	0.03	0.05			
175	0.02	0.03	0.04	0.06	0.07	0.07	0.09	0.10	0.09	0.09	0.08	0.05	0.03	0.02	0.02	0.02			
180	0.00	0.00	0.00	0.00	0.00	0.00	0.00	0.00	0.00	0.00	0.00	0.00	0.00	0.00	0.00	0.00			

C Range: 0 - 360DEG
 C Interval: 22.5DEG
 Test Speed: HIGH
 Temperature:25.3DEG
 Operators:ZMB
 Test Date:2019-06-21

γ Range: 0 - 180DEG
 γ Interval: 0.5DEG
 Test System:EVERFINE GO-R5000_V2 SYSTEM V2.0.366
 Humidity:28.2%
 Test Distance:1.191m [K=1.0000]
 Remarks: