

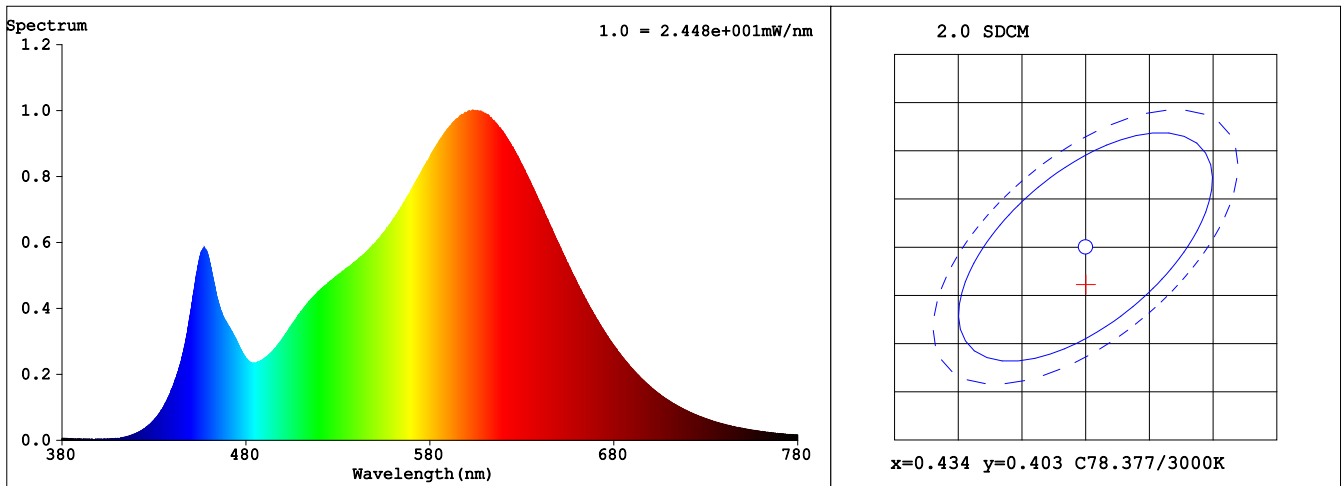
Spectrum Test Report

Sample	:	Date	:	2019-08-29 02:04:42
Specification	:	Sam. Status	:	
Sample No.	:	Standard	:	LM-79-08
Manufacturer	:	Instrument	:	HaasSuite(EVERFINE)
Remark	:	Test by	:	huaWenJun (2.0)

Test Condition

Temperature	:	27.9Deg	RH	:	30.1%
WL Range	:	380nm-780nm	IP	:	52346 (80%)
Test Mode	:	Fast Test	T	:	151 ms
Sensitivity	:	High			

Spectrum



Colorimetric Parameters

Chromaticity Coordinate: $x = 0.4339$ $y = 0.3993$ / $u' = 0.2507$ $v' = 0.5190$ ($duv = -1.50e-03$)

CCT= 3013K Prcp WL: $L_d = 583.3nm$ Purity=50.1%

Peak WL: $L_p = 604nm$ FWHM: =127.9nm Ratio:R=23.2% G=73.9% B=2.9%

Render Index: $R_a = 83.8$ TM30:Rf=82 Rg=95

R1 =83 R2 =94 R3 =94 R4 =81 R5 =83 R6 =92 R7 =82

R8 =60 R9 =13 R10=85 R11=80 R12=74 R13=86 R14=98 R15=76

LEVEL:OUT WHITE:ANSI_3000K

Photometric & Radiometric Parameters

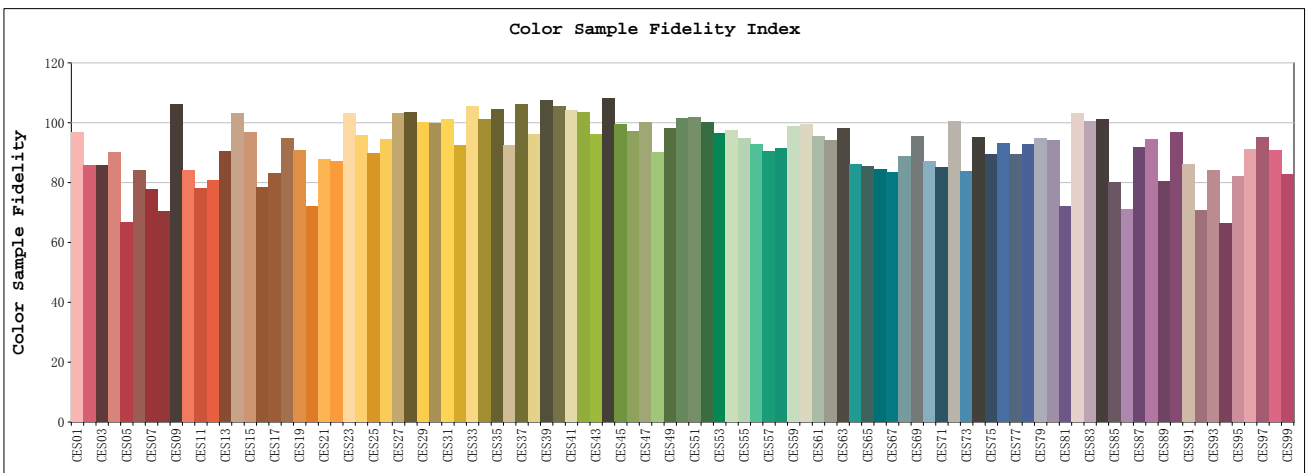
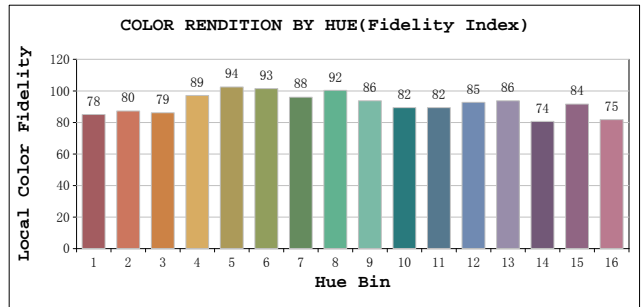
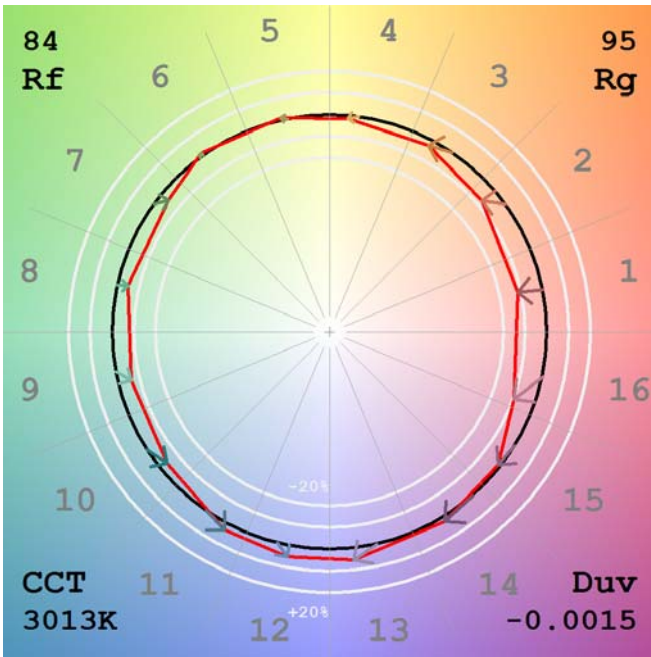
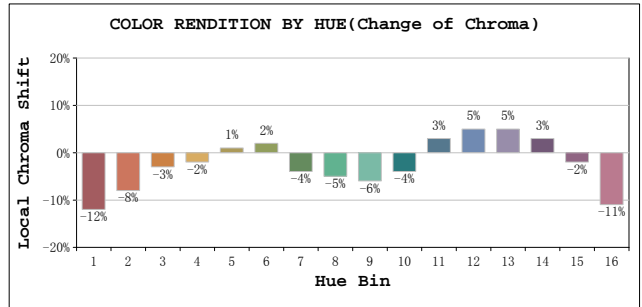
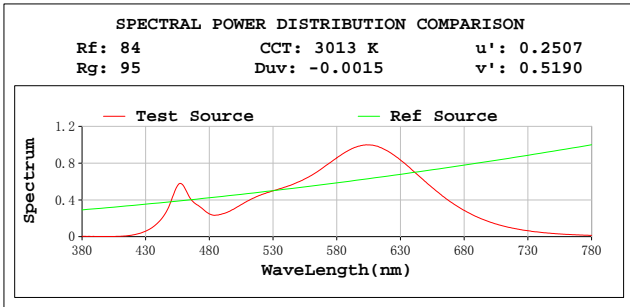
Flux = 1189.4 lm Eff. : 103.87 lm/W Fe = 3.6798 W

Flux of emitted photons($\mu mol/s$):17.86 Fluo. and blue light ratio:7.543 Fluorescent eff.:235.7

Electrical parameters

V = 119.99 V I = 0.1149 A P = 11.45 W PF = 0.8305

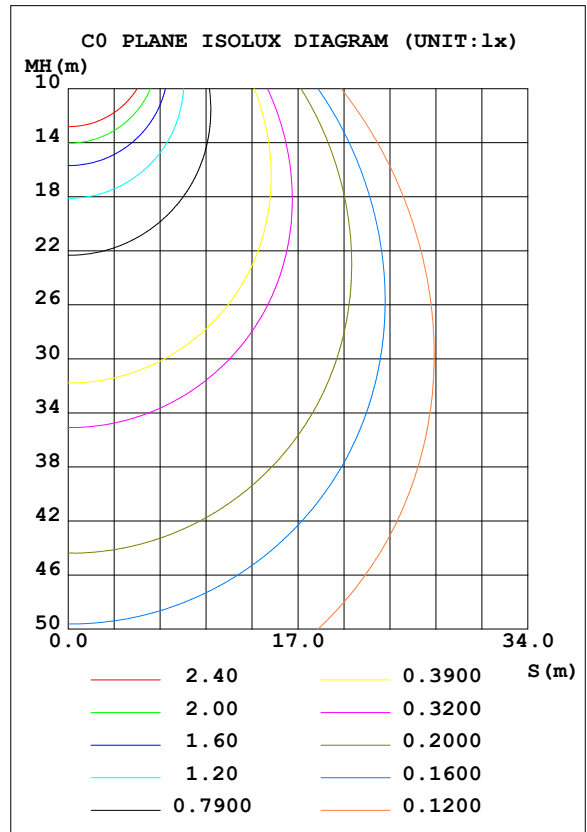
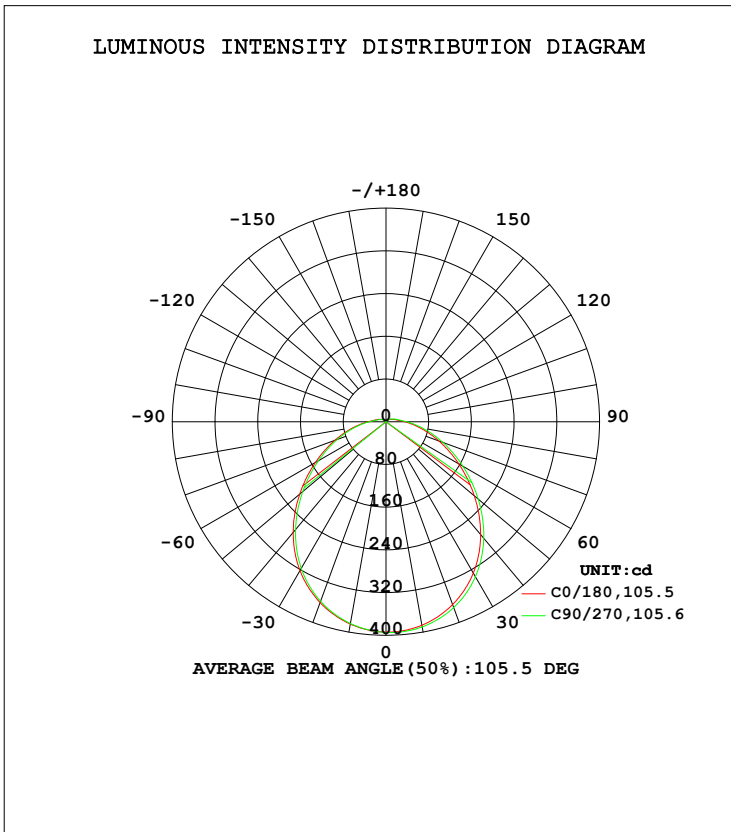
TM30



LUMINAIRE PHOTOMETRIC TEST REPORT

Test:U:120.0V I:0.1181A P:11.98W PF:0.8453 Freq:0Hz Lamp Flux:1184.39x1 lm		
NAME: BR40-12-830-DIM	TYPE: /	WEIGHT: /
SPEC.: /	DIM.: /	SERIAL No.: /
MFR.: RAB Lighting Inc	SUR.: /	Shielding Angle: /

DATA OF LAMP		PHOTOMETRIC DATA Eff: 98.86 lm/W			
MODEL	/	I _{max} (cd)	395.1	S/MH (C0/180)	1.22
NOMINAL POWER (W)	/	LOR (%)	100.0	S/MH (C90/270)	1.20
RATED VOLTAGE (V)	120	TOTAL FLUX (lm)	1184.4	η UP, DN (C0-180)	3.2, 48.4
NOMINAL FLUX (lm)	1184.39	CIE CLASS	DIRECT	η UP, DN (C180-360)	2.8, 45.6
LAMPS INSIDE	1	η up (%)	6.0	CIBSE SHR NOM	1.25
TEST VOLTAGE (V)	120	η down (%)	94.0	CIBSE SHR MAX	1.35



C Range: 0 - 360DEG
 C Interval: 22.5DEG
 Test Speed: HIGH
 Temperature: 25.3DEG
 Operators: YY
 Test Date: 2019-08-26

γ Range: 0 - 180DEG
 γ Interval: 0.5DEG
 Test System: EVERFINE GO-R5000_V2 SYSTEM V2.0.366
 Humidity: 28.2%
 Test Distance: 1.191m [K=1.0000]
 Remarks:

ZONAL FLUX DIAGRAM

ZONAL FLUX DIAGRAM:

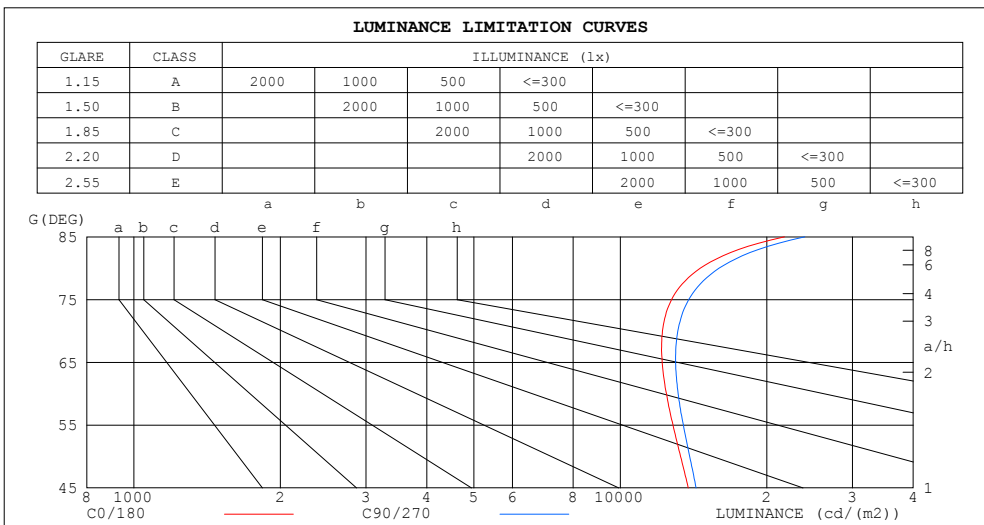
γ	C0	C45	C90	C135	C180	C225	C270	C315	γ	Φ zone	Φ total	%lum, lamp
5	392.4	394.1	394.4	393.5	391.3	390.9	390.9	392.1	0- 5	9.409	9.409	0.79,0.79
10	386.9	389.9	390.3	388.3	384.8	383.6	383.8	385.5	5- 10	27.87	37.28	3.15,3.15
15	377.6	381.7	382.1	379.2	374.4	372.5	372.6	375.1	10- 15	45.30	82.58	6.97,6.97
20	364.3	369.9	370.4	366.4	360.6	358.3	358.0	361.0	15- 20	61.04	143.6	12.1,12.1
25	347.5	354.0	354.6	349.8	342.9	340.1	339.4	343.1	20- 25	74.48	218.1	18.4,18.4
30	327.1	334.4	334.8	329.5	322.1	318.0	317.3	321.4	25- 30	85.07	303.2	25.6,25.6
35	302.9	310.8	311.6	305.7	297.7	292.8	291.7	296.2	30- 35	92.32	395.5	33.4,33.4
40	275.7	284.0	284.9	278.7	270.4	264.9	263.6	268.2	35- 40	95.93	491.4	41.5,41.5
45	246.4	254.7	255.7	249.5	241.1	235.2	233.7	238.6	40- 45	95.92	587.3	49.6,49.6
50	215.9	224.0	225.4	219.3	211.0	205.1	203.5	208.2	45- 50	92.58	679.9	57.4,57.4
55	185.9	193.3	195.3	189.4	181.2	175.5	174.1	178.5	50- 55	86.50	766.4	64.7,64.7
60	157.1	163.9	166.0	160.8	152.7	147.5	146.2	150.3	55- 60	78.41	844.8	71.3,71.3
65	130.1	136.3	138.7	134.0	126.4	121.6	120.5	124.2	60- 65	69.05	913.9	77.2,77.2
70	105.5	111.0	113.4	109.2	102.1	97.98	97.12	100.3	65- 70	59.01	972.9	82.1,82.1
75	83.35	88.21	90.36	86.64	80.44	76.92	76.17	78.83	70- 75	48.80	1022	86.3,86.3
80	64.02	68.21	69.95	66.89	61.72	58.73	58.17	60.17	75- 80	38.95	1061	89.6,89.6
85	47.88	51.31	52.69	50.20	46.04	43.53	42.97	44.68	80- 85	29.98	1091	92.1,92.1
90	35.24	37.88	38.93	37.17	34.01	31.96	31.48	32.73	85- 90	22.37	1113	94,94
95	26.27	28.29	29.20	28.03	25.62	23.96	23.54	24.40	90- 95	16.57	1130	95.4,95.4
100	20.48	22.08	22.95	22.18	20.25	18.90	18.57	19.17	95-100	12.59	1142	96.4,96.4
105	16.71	18.05	18.83	18.25	16.63	15.47	15.20	15.67	100-105	9.973	1152	97.3,97.3
110	13.70	14.84	15.50	15.04	13.68	12.67	12.41	12.82	105-110	8.003	1160	98,98
115	11.16	12.14	12.71	12.34	11.18	10.31	10.08	10.41	110-115	6.349	1166	98.5,98.5
120	9.021	9.881	10.37	10.07	9.075	8.317	8.117	8.382	115-120	4.961	1171	98.9,98.9
125	7.223	7.972	8.393	8.140	7.306	6.640	6.462	6.683	120-125	3.809	1175	99.2,99.2
130	5.720	6.382	6.749	6.529	5.817	5.235	5.079	5.262	125-130	2.865	1178	99.5,99.5
135	4.461	5.038	5.363	5.179	4.548	4.041	3.921	4.065	130-135	2.101	1180	99.6,99.6
140	3.429	3.922	4.217	4.061	3.507	3.074	2.980	3.094	135-140	1.499	1182	99.8,99.8
145	2.576	2.996	3.261	3.130	2.645	2.293	2.219	2.305	140-145	1.035	1183	99.9,99.9
150	1.891	2.237	2.461	2.353	1.944	1.674	1.615	1.676	145-150	0.6851	1183	99.9,99.9
155	1.367	1.643	1.841	1.744	1.398	1.208	1.166	1.209	150-155	0.4333	1184	100,100
160	0.9925	1.193	1.371	1.288	0.9928	0.8761	0.8576	0.8871	155-160	0.2625	1184	100,100
165	0.7344	0.8556	1.008	0.9371	0.7045	0.6420	0.6452	0.6789	160-165	0.1517	1184	100,100
170	0.5264	0.5682	0.6706	0.6197	0.4702	0.4423	0.4479	0.5013	165-170	0.0788	1184	100,100
175	0.2802	0.2766	0.2160	0.2825	0.2138	0.1938	0.2054	0.1965	170-175	0.0294	1184	100,100
180	0.0006	0.0004	0.0008	0.0006	0.0004	0.0006	0.0007	0.0006	175-180	0.0029	1184	100,100
DEG	LUMINOUS INTENSITY:cd								UNIT:lm			

C Range: 0 - 360DEG
 C Interval: 22.5DEG
 Test Speed: HIGH
 Temperature:25.3DEG
 Operators:YY
 Test Date:2019-08-26

γ Range: 0 - 180DEG
 γ Interval: 0.5DEG
 Test System:EVERFINE GO-R5000_V2 SYSTEM V2.0.366
 Humidity:28.2%
 Test Distance:1.191m [K=1.0000]
 Remarks:

LUMINANCE LIMITATION CURVES

Test:U:120.0V I:0.1181A P:11.98W PF:0.8453 Freq:0Hz Lamp Flux:1184.39x1 lm		
NAME: BR40-12-830-DIM	TYPE: /	WEIGHT: /
SPEC.: /	DIM.: /	SERIAL No.: /
MFR.: RAB Lighting Inc	SUR.: /	Shielding Angle: /



LUMINANCE cd/(m2)		
G (DEG)	C0/180	C90/270
85	21746	23932
80	14596	15948
75	12749	13822
70	12209	13127
65	12191	12990
60	12435	13143
55	12827	13478
50	13300	13884
45	13794	14314

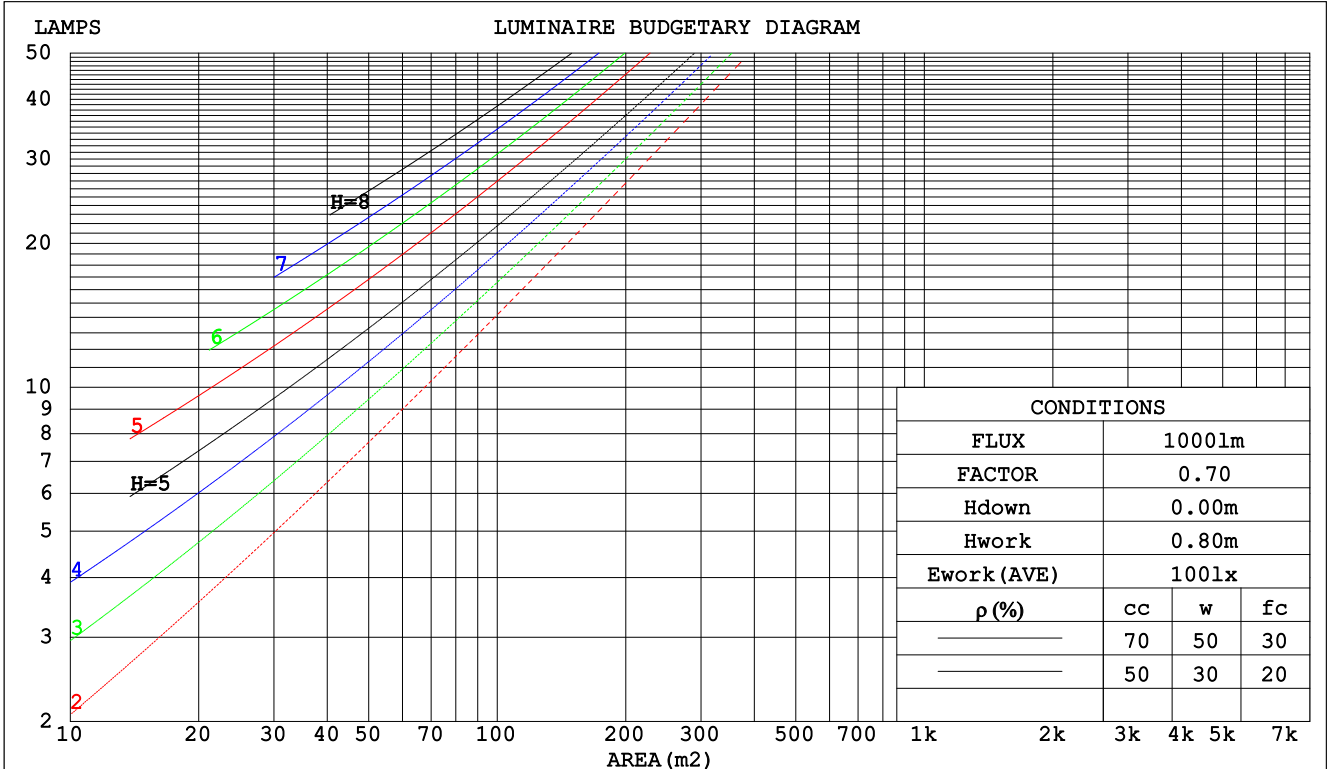
C Range: 0 - 360DEG
 C Interval: 22.5DEG
 Test Speed: HIGH
 Temperature: 25.3DEG
 Operators: YY
 Test Date: 2019-08-26

γ Range: 0 - 180DEG
 γ Interval: 0.5DEG
 Test System: EVERFINE GO-R5000_V2 SYSTEM V2.0.366
 Humidity: 28.2%
 Test Distance: 1.191m [K=1.0000]
 Remarks:

CU AND LUMINAIRE BUDGETARY ESTIMATE DIAGRAM

Test:U:120.0V I:0.1181A P:11.98W PF:0.8453 Freq:0Hz Lamp Flux:1184.39x1 lm		
NAME: BR40-12-830-DIM	TYPE: /	WEIGHT: /
SPEC.: /	DIM.: /	SERIAL No.: /
MFR.: RAB Lighting Inc	SUR.: /	Shielding Angle: /

pcc	80%			70%			50%			30%			10%			0
pw	50%	30%	10%	50%	30%	10%	50%	30%	10%	50%	30%	10%	50%	30%	10%	0
pfc	20%			20%			20%			20%			20%			0
RCR	RCR:Room Cavity Ratio						Coefficients of Utilization(CU)									
0.0	1.18	1.18	1.18	1.14	1.14	1.14	1.08	1.08	1.08	1.02	1.02	1.02	.97	.97	.97	.94
1.0	1.01	.96	.92	.98	.94	.90	.93	.89	.86	.88	.85	.83	.83	.81	.79	.76
2.0	.88	.81	.75	.85	.79	.73	.81	.75	.71	.77	.72	.68	.73	.69	.66	.63
3.0	.77	.69	.62	.75	.67	.61	.71	.65	.59	.68	.62	.57	.64	.60	.56	.53
4.0	.68	.59	.53	.67	.58	.52	.63	.56	.51	.60	.54	.49	.57	.52	.48	.46
5.0	.61	.52	.45	.60	.51	.45	.57	.49	.44	.54	.48	.43	.52	.46	.42	.39
6.0	.55	.46	.40	.54	.45	.39	.51	.44	.38	.49	.43	.38	.47	.41	.37	.35
7.0	.50	.41	.35	.49	.41	.35	.47	.39	.34	.45	.38	.33	.43	.37	.33	.31
8.0	.46	.37	.31	.45	.37	.31	.43	.36	.30	.41	.35	.30	.40	.34	.29	.27
9.0	.42	.34	.28	.41	.33	.28	.39	.32	.27	.38	.32	.27	.37	.31	.27	.25
10.0	.39	.31	.26	.38	.30	.25	.37	.30	.25	.35	.29	.25	.34	.28	.24	.22



C Range: 0 - 360DEG
 C Interval: 22.5DEG
 Test Speed: HIGH
 Temperature: 25.3DEG
 Operators: YY
 Test Date: 2019-08-26

γ Range: 0 - 180DEG
 γ Interval: 0.5DEG
 Test System: EVERFINE GO-R5000_V2 SYSTEM V2.0.366
 Humidity: 28.2%
 Test Distance: 1.191m [K=1.0000]
 Remarks:

WEC AND CCEC

Test:U:120.0V I:0.1181A P:11.98W PF:0.8453 Freq:0Hz Lamp Flux:1184.39x1 lm		
NAME: BR40-12-830-DIM	TYPE: /	WEIGHT: /
SPEC.: /	DIM.: /	SERIAL No.: /
MFR.: RAB Lighting Inc	SUR.: /	Shielding Angle: /

ρcc	80%			70%			50%			30%			10%			0
ρw	50%	30%	10%	50%	30%	10%	50%	30%	10%	50%	30%	10%	50%	30%	10%	0
ρfc	20%			20%			20%			20%			20%			0
RCR	RCR:Room Cavity Ratio						Wall Exitance Coefficients(WEC)									
0.0																
1.0	.335	.190	.060	.326	.186	.059	.309	.177	.057	.294	.169	.054	.279	.162	.052	
2.0	.302	.166	.051	.294	.162	.050	.279	.155	.048	.266	.149	.047	.253	.143	.045	
3.0	.275	.146	.044	.268	.143	.043	.254	.138	.042	.242	.133	.041	.231	.128	.039	
4.0	.251	.131	.038	.245	.128	.038	.233	.124	.037	.222	.119	.036	.211	.115	.035	
5.0	.231	.118	.034	.225	.116	.034	.214	.112	.033	.204	.108	.032	.195	.104	.031	
6.0	.213	.107	.031	.208	.105	.030	.199	.102	.030	.190	.099	.029	.181	.095	.028	
7.0	.198	.098	.028	.194	.096	.027	.185	.093	.027	.177	.091	.026	.169	.088	.026	
8.0	.185	.090	.025	.181	.089	.025	.173	.086	.025	.165	.084	.024	.158	.081	.024	
9.0	.173	.084	.023	.169	.082	.023	.162	.080	.023	.155	.078	.022	.149	.076	.022	
10.0	.162	.078	.022	.159	.077	.021	.152	.075	.021	.146	.073	.021	.140	.071	.020	

ρcc	80%			70%			50%			30%			10%			0
ρw	50%	30%	10%	50%	30%	10%	50%	30%	10%	50%	30%	10%	50%	30%	10%	0
ρfc	20%			20%			20%			20%			20%			0
RCR	RCR:Room Cavity Ratio						Ceiling Cavity Exitance Coefficients(CCEC)									
0.0	.236	.236	.236	.202	.202	.202	.138	.138	.138	.079	.079	.079	.025	.025	.025	
1.0	.228	.202	.179	.195	.174	.154	.134	.119	.106	.077	.069	.062	.025	.022	.020	
2.0	.220	.178	.143	.189	.154	.124	.129	.106	.086	.075	.062	.051	.024	.020	.017	
3.0	.212	.161	.120	.182	.139	.104	.125	.097	.073	.072	.056	.043	.023	.018	.014	
4.0	.204	.148	.105	.175	.128	.091	.121	.089	.064	.070	.052	.038	.022	.017	.013	
5.0	.197	.138	.094	.169	.119	.082	.116	.083	.058	.067	.049	.034	.022	.016	.011	
6.0	.190	.130	.087	.163	.112	.075	.112	.079	.053	.065	.046	.032	.021	.015	.010	
7.0	.183	.123	.081	.157	.106	.070	.109	.075	.050	.063	.044	.030	.020	.014	.010	
8.0	.176	.117	.076	.152	.102	.067	.105	.071	.047	.061	.042	.028	.020	.014	.009	
9.0	.170	.112	.073	.147	.097	.064	.102	.068	.045	.059	.040	.027	.019	.013	.009	
10.0	.164	.108	.070	.142	.094	.061	.098	.066	.044	.057	.039	.026	.019	.013	.009	

C Range: 0 - 360DEG
 C Interval: 22.5DEG
 Test Speed: HIGH
 Temperature:25.3DEG
 Operators:YY
 Test Date:2019-08-26

γ Range: 0 - 180DEG
 γ Interval: 0.5DEG
 Test System:EVERFINE GO-R5000_V2 SYSTEM V2.0.366
 Humidity:28.2%
 Test Distance:1.191m [K=1.0000]
 Remarks:

UGR(Unified Glare Rating) Table

Test:U:120.0V I:0.1181A P:11.98W PF:0.8453 Freq:0Hz Lamp Flux:1184.39x1 lm										
NAME: BR40-12-830-DIM					TYPE: /			WEIGHT: /		
SPEC.: /					DIM.: /			SERIAL No.: /		
MFR.: RAB Lighting Inc					SUR.:			Shielding Angle: /		
ceiling/cavity	0.7	0.7	0.5	0.5	0.3	0.7	0.7	0.5	0.5	0.3
walls	0.5	0.3	0.5	0.3	0.3	0.5	0.3	0.5	0.3	0.3
working plane	0.2	0.2	0.2	0.2	0.2	0.2	0.2	0.2	0.2	0.2
Room dimensions	Viewed crosswise					Viewed endwise				
x = 2H y = 2H	21.3	22.8	21.7	23.1	23.4	21.5	23.0	21.9	23.3	23.6
3H	22.9	24.3	23.3	24.6	25.0	23.2	24.5	23.6	24.9	25.2
4H	23.7	25.0	24.1	25.3	25.7	24.0	25.3	24.4	25.7	26.0
6H	24.5	25.7	24.9	26.1	26.5	24.9	26.0	25.3	26.4	26.8
8H	24.9	26.0	25.3	26.4	26.8	25.3	26.4	25.7	26.8	27.2
12H	25.3	26.4	25.8	26.8	27.3	25.7	26.9	26.2	27.3	27.7
4H 2H	21.9	23.2	22.3	23.6	24.0	22.1	23.4	22.5	23.7	24.1
3H	23.8	24.9	24.2	25.3	25.7	24.0	25.1	24.5	25.5	26.0
4H	24.7	25.7	25.2	26.2	26.6	25.0	26.0	25.5	26.4	26.9
6H	25.7	26.6	26.2	27.0	27.5	26.0	26.9	26.5	27.4	27.9
8H	26.2	27.0	26.7	27.5	28.0	26.5	27.4	27.0	27.9	28.4
12H	26.7	27.5	27.2	28.0	28.5	27.1	27.9	27.6	28.4	28.9
8H 4H	25.1	26.0	25.6	26.4	27.0	25.4	26.2	25.9	26.7	27.2
6H	26.3	27.0	26.9	27.5	28.1	26.6	27.3	27.2	27.8	28.4
8H	27.0	27.6	27.5	28.2	28.7	27.3	27.9	27.9	28.5	29.1
12H	27.7	28.3	28.3	28.8	29.4	28.1	28.7	28.7	29.2	29.8
12H 4H	25.2	26.0	25.7	26.5	27.0	25.4	26.2	25.9	26.7	27.2
6H	26.5	27.1	27.0	27.7	28.2	26.8	27.4	27.3	27.9	28.5
8H	27.2	27.8	27.8	28.3	29.0	27.5	28.1	28.1	28.6	29.3
Variations with the observer position at spacings:										
S = 1.0H	+ 0.1 / - 0.2					+ 0.1 / - 0.2				
1.5H	+ 0.2 / - 0.3					+ 0.2 / - 0.3				
2.0H	+ 0.1 / - 0.3					+ 0.1 / - 0.3				

CIE Pub.117, 1184 lm Total Lamp Luminous Flux Corrected (8log(F/F0) = 0.6)

C Range: 0 - 360DEG
 C Interval: 22.5DEG
 Test Speed: HIGH
 Temperature:25.3DEG
 Operators:YY
 Test Date:2019-08-26

γ Range: 0 - 180DEG
 γ Interval: 0.5DEG
 Test System:EVERFINE GO-R5000_V2 SYSTEM V2.0.366
 Humidity:28.2%
 Test Distance:1.191m [K=1.0000]
 Remarks:

UTILIZATION FACTORS TABLE

Test:U:120.0V I:0.1181A P:11.98W PF:0.8453 Freq:0Hz Lamp Flux:1184.39x1 lm		
NAME: BR40-12-830-DIM	TYPE: /	WEIGHT: /
SPEC.: /	DIM.: /	SERIAL No.: /
MFR.: RAB Lighting Inc	SUR.: /	Shielding Angle: /

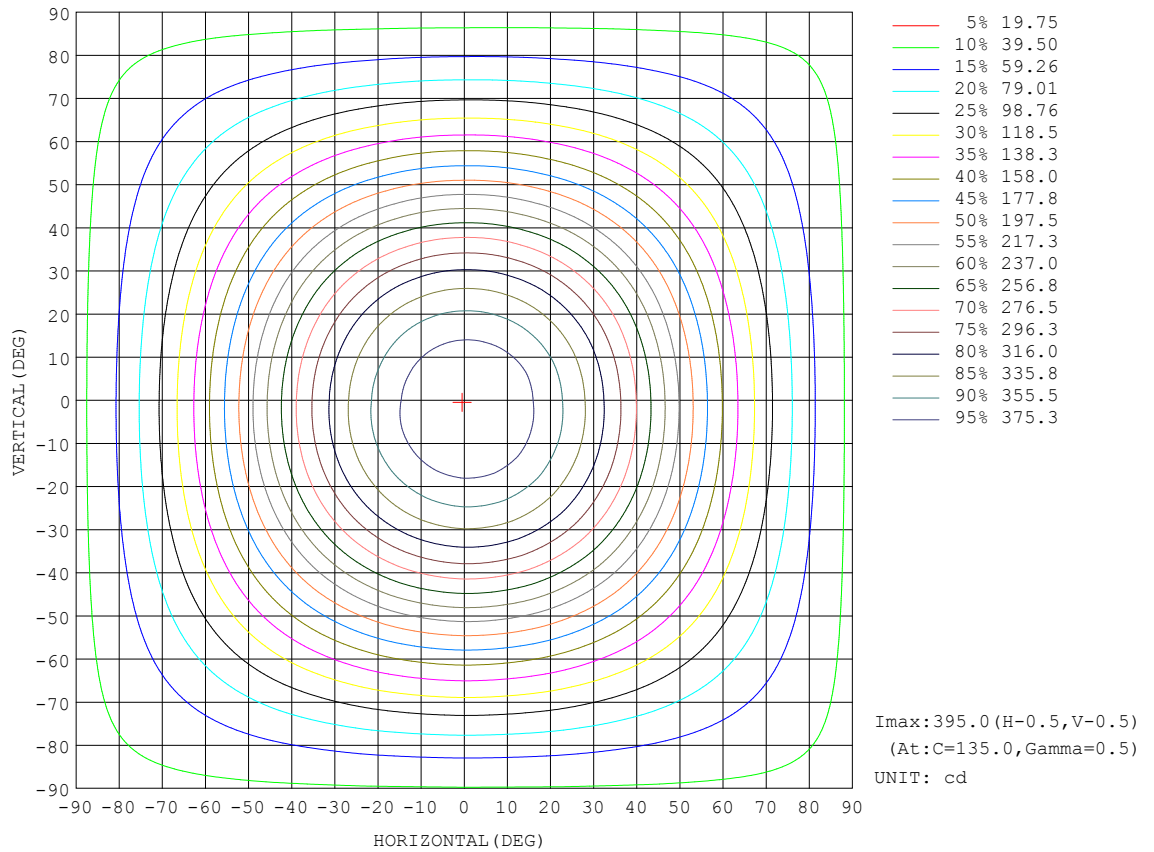
REFLECTANCE										
Ceiling	0.8	0.8	0.8	0.7	0.7	0.7	0.5	0.5	0.5	0
Walls	0.7	0.5	0.3	0.7	0.5	0.3	0.7	0.5	0.3	0
Working plane	0.2	0.2	0.2	0.2	0.2	0.2	0.2	0.2	0.2	0
ROOM INDEX	UTILIZATION FACTORS (PERCENT) $k(RI) \times RCR = 5$									
k = 0.60	56	44	37	55	44	37	53	43	37	30
0.80	65	53	46	64	53	46	62	52	45	38
1.00	73	62	54	72	61	54	69	62	53	46
1.25	80	69	62	78	68	61	75	66	60	52
1.50	85	74	67	83	73	66	79	71	65	57
2.00	92	82	75	89	81	74	85	78	73	64
2.50	96	87	80	93	85	79	89	82	77	67
3.00	99	91	85	96	89	84	92	86	81	71
4.00	103	97	91	100	95	90	95	90	86	76
5.00	106	100	95	103	98	93	97	93	90	79
ROOM INDEX	UF(total)									Direct
According to DIN EN 13032-2 2004			Suspended				SHRNOM = 1.25			

C Range: 0 - 360DEG
 C Interval: 22.5DEG
 Test Speed: HIGH
 Temperature: 25.3DEG
 Operators: YY
 Test Date: 2019-08-26

γ Range: 0 - 180DEG
 γ Interval: 0.5DEG
 Test System: EVERFINE GO-R5000_V2 SYSTEM V2.0.366
 Humidity: 28.2%
 Test Distance: 1.191m [K=1.0000]
 Remarks:

ISOCANDELA DIAGRAM

Test:U:120.0V I:0.1181A P:11.98W PF:0.8453 Freq:0Hz Lamp Flux:1184.39x1 lm		
NAME: BR40-12-830-DIM	TYPE: /	WEIGHT: /
SPEC.: /	DIM.: /	SERIAL No.: /
MFR.: RAB Lighting Inc	SUR.: /	Shielding Angle: /

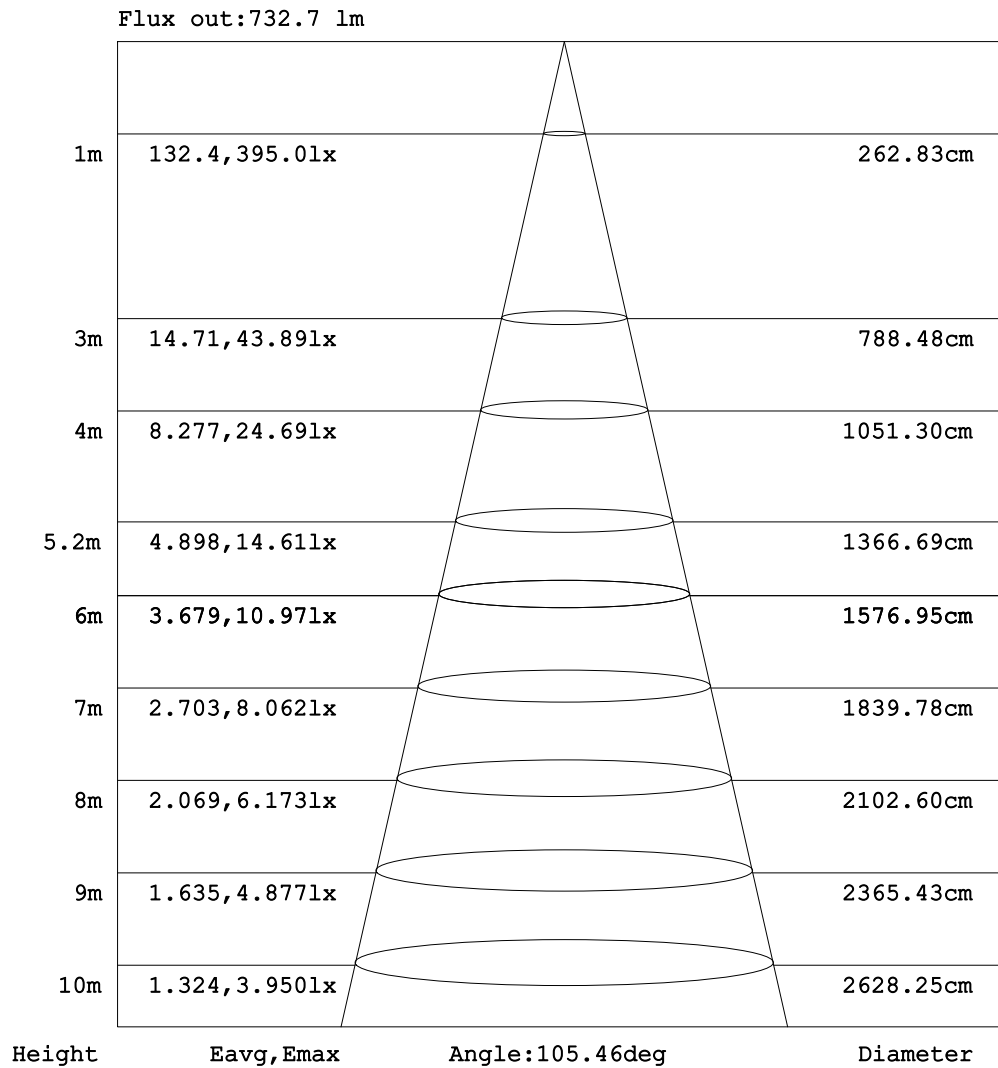


C Range: 0 - 360DEG
 C Interval: 22.5DEG
 Test Speed: HIGH
 Temperature: 25.3DEG
 Operators: YY
 Test Date: 2019-08-26

γ Range: 0 - 180DEG
 γ Interval: 0.5DEG
 Test System: EVERFINE GO-R5000_V2 SYSTEM V2.0.366
 Humidity: 28.2%
 Test Distance: 1.191m [K=1.0000]
 Remarks:

AAI Figure

Test:U:120.0V I:0.1181A P:11.98W PF:0.8453 Freq:0Hz Lamp Flux:1184.39x1 lm		
NAME: BR40-12-830-DIM	TYPE: /	WEIGHT: /
SPEC.: /	DIM.: /	SERIAL No.: /
MFR.: RAB Lighting Inc	SUR.: /	Shielding Angle: /



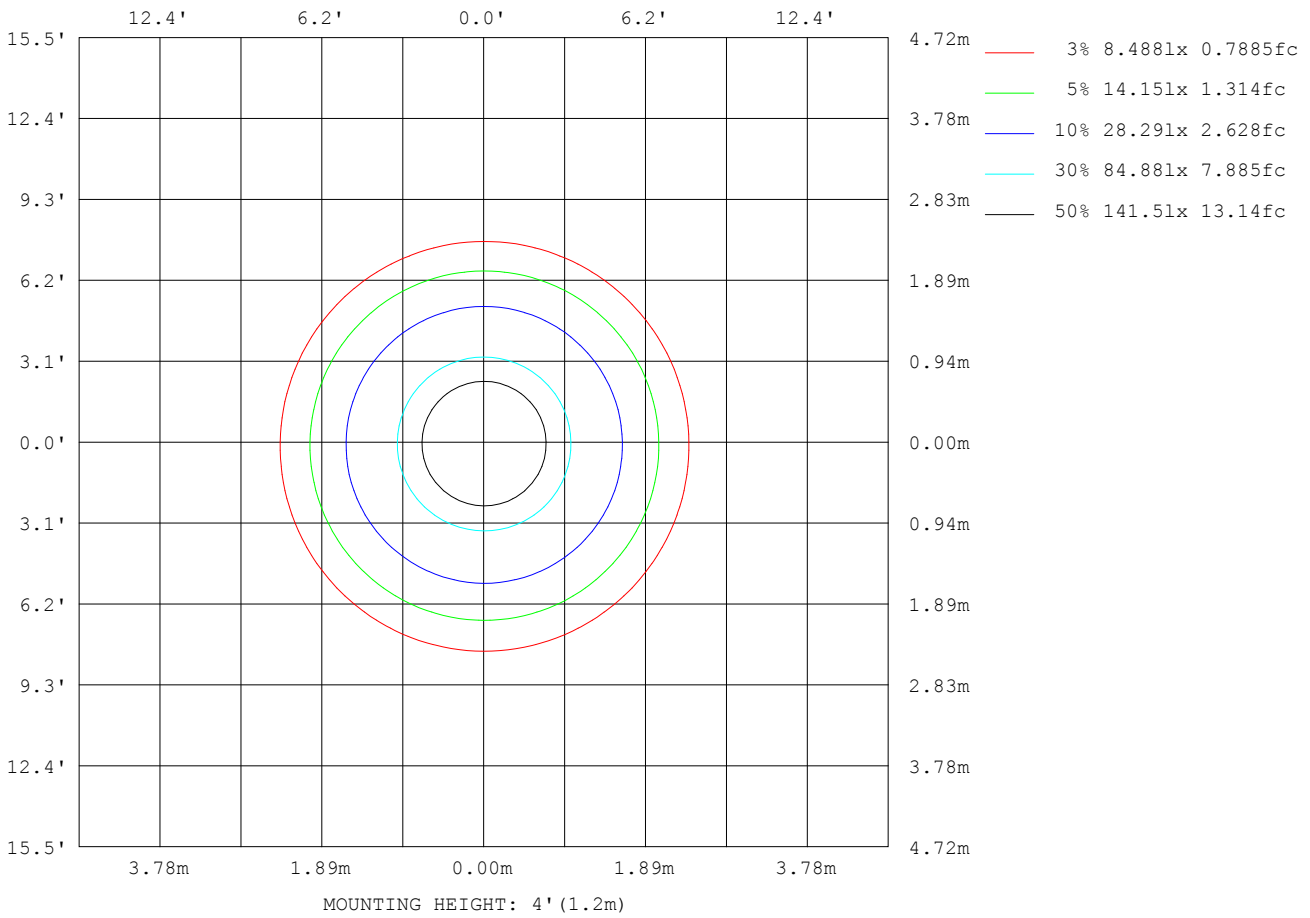
Note: The Curves indicate the illuminated area and the average illumination when the luminaire is at different distance.

C Range: 0 - 360DEG
 C Interval: 22.5DEG
 Test Speed: HIGH
 Temperature: 25.3DEG
 Operators: YY
 Test Date: 2019-08-26

γ Range: 0 - 180DEG
 γ Interval: 0.5DEG
 Test System: EVERFINE GO-R5000_V2 SYSTEM V2.0.366
 Humidity: 28.2%
 Test Distance: 1.191m [K=1.0000]
 Remarks:

ISOLUX DIAGRAM

Test:U:120.0V I:0.1181A P:11.98W PF:0.8453 Freq:0Hz Lamp Flux:1184.39x1 lm		
NAME: BR40-12-830-DIM	TYPE: /	WEIGHT: /
SPEC.: /	DIM.: /	SERIAL No.: /
MFR.: RAB Lighting Inc	SUR.: /	Shielding Angle: /



C Range: 0 - 360DEG
 C Interval: 22.5DEG
 Test Speed: HIGH
 Temperature: 25.3DEG
 Operators: YY
 Test Date: 2019-08-26

γ Range: 0 - 180DEG
 γ Interval: 0.5DEG
 Test System: EVERFINE GO-R5000_V2 SYSTEM V2.0.366
 Humidity: 28.2%
 Test Distance: 1.191m [K=1.0000]
 Remarks:

LED Avg.L Report

Test:U:120.0V I:0.1181A P:11.98W PF:0.8453 Freq:0Hz Lamp Flux:1184.39x1 lm		
NAME: BR40-12-830-DIM	TYPE: /	WEIGHT: /
SPEC.: /	DIM.: /	SERIAL No.: /
MFR.: RAB Lighting Inc	SUR.: /	Shielding Angle: /

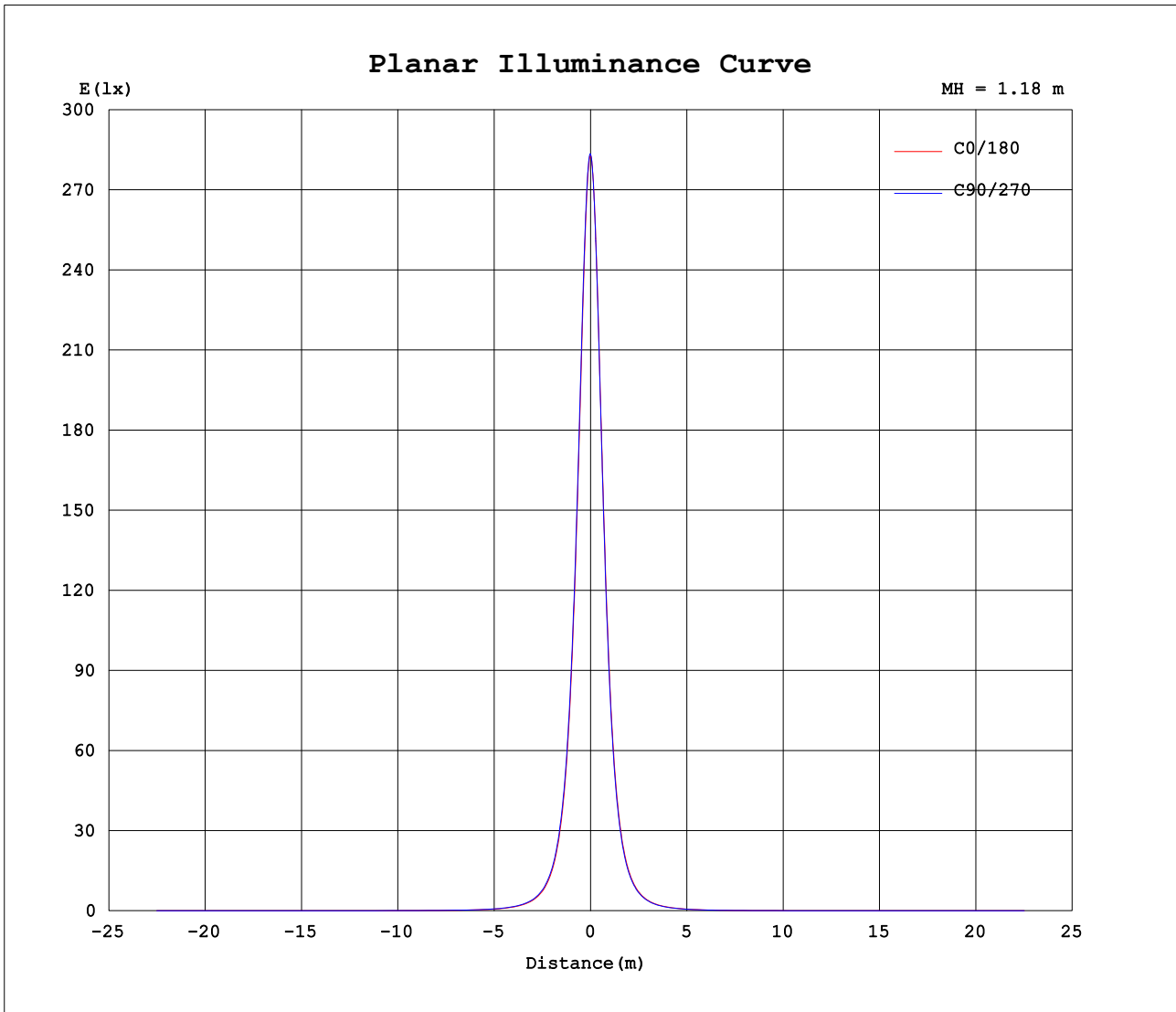
AvgL	cd/m2
L_0~180 (65) av	12014
L_0~180 (75) av	12526
L_0~180 (85) av	21329
L_90~270 (65) av	12140
L_90~270 (75) av	12737
L_90~270 (85) av	21724
L_45 (65) av	12086
L_45 (75) av	12642
L_45 (85) av	21543

Standard: GB/T 29293-2012

C Range: 0 - 360DEG
C Interval: 22.5DEG
Test Speed: HIGH
Temperature:25.3DEG
Operators:YY
Test Date:2019-08-26

γ Range: 0 - 180DEG
 γ Interval: 0.5DEG
Test System:EVERFINE GO-R5000_V2 SYSTEM V2.0.366
Humidity:28.2%
Test Distance:1.191m [K=1.0000]
Remarks:

Planar Illuminance Curve



C Range: 0 - 360DEG
 C Interval: 22.5DEG
 Test Speed: HIGH
 Temperature:25.3DEG
 Operators:YY
 Test Date:2019-08-26

γ Range: 0 - 180DEG
 γ Interval: 0.5DEG
 Test System:EVERFINE GO-R5000_V2 SYSTEM V2.0.366
 Humidity:28.2%
 Test Distance:1.191m [K=1.0000]
 Remarks:

LUMINOUS DISTRIBUTION INTENSITY DATA

Test:U:120.0V I:0.1181A P:11.98W PF:0.8453 Freq:0Hz Lamp Flux:1184.39x1 lm		
NAME: BR40-12-830-DIM	TYPE: /	WEIGHT: /
SPEC.: /	DIM.: /	SERIAL No.: /
MFR.: RAB Lighting Inc	SUR.: /	Shielding Angle: /

Table--1

UNIT: cd

C (DEG) \ γ (DEG)	0	22.5	45	67.5	90	112.5	135	157.5	180	202.5	225	247.5	270	292.5	315	337.5			
0	394	394	394	394	394	395	395	395	394	394	394	394	394	395	395	395			
5	392	393	394	394	394	394	394	393	391	391	391	391	391	391	392	393			
10	387	388	390	390	390	389	388	387	385	384	384	384	384	384	385	387			
15	378	380	382	382	382	381	379	377	374	373	373	372	373	373	375	377			
20	364	367	370	371	370	369	366	364	361	359	358	358	358	359	361	363			
25	347	351	354	355	355	353	350	347	343	341	340	339	339	341	343	346			
30	327	331	334	336	335	333	329	326	322	320	318	317	317	319	321	325			
35	303	307	311	312	312	309	306	302	298	295	293	291	292	293	296	300			
40	276	280	284	286	285	282	279	275	270	267	265	263	264	265	268	273			
45	246	251	255	256	256	253	249	245	241	238	235	234	234	235	239	243			
50	216	220	224	226	225	223	219	215	211	208	205	204	203	205	208	213			
55	186	190	193	195	195	193	189	185	181	178	175	174	174	176	179	183			
60	157	161	164	166	166	164	161	157	153	150	147	146	146	148	150	154			
65	130	133	136	138	139	137	134	130	126	124	122	120	121	122	124	127			
70	105	108	111	113	113	112	109	106	102	99.7	98.0	97.0	97.1	98.2	100	103			
75	83.3	85.9	88.2	89.9	90.4	89.2	86.6	83.5	80.4	78.3	76.9	76.1	76.2	77.1	78.8	81.2			
80	64.0	66.2	68.2	69.6	70.0	69.0	66.9	64.2	61.7	59.9	58.7	58.1	58.2	58.9	60.2	62.2			
85	47.9	49.7	51.3	52.4	52.7	51.9	50.2	48.1	46.0	44.6	43.5	43.0	43.0	43.6	44.7	46.3			
90	35.2	36.7	37.9	38.7	38.9	38.4	37.2	35.6	34.0	32.8	32.0	31.5	31.5	31.9	32.7	34.0			
95	26.3	27.4	28.3	28.9	29.2	28.9	28.0	26.9	25.6	24.7	24.0	23.5	23.5	23.8	24.4	25.3			
100	20.5	21.3	22.1	22.7	23.0	22.8	22.2	21.3	20.3	19.5	18.9	18.6	18.6	18.8	19.2	19.8			
105	16.7	17.4	18.0	18.6	18.8	18.7	18.2	17.5	16.6	16.0	15.5	15.2	15.2	15.4	15.7	16.2			
110	13.7	14.3	14.8	15.3	15.5	15.4	15.0	14.4	13.7	13.1	12.7	12.4	12.4	12.5	12.8	13.2			
115	11.2	11.7	12.1	12.5	12.7	12.7	12.3	11.8	11.2	10.7	10.3	10.1	10.1	10.2	10.4	10.8			
120	9.02	9.46	9.88	10.2	10.4	10.3	10.1	9.62	9.08	8.64	8.32	8.14	8.12	8.20	8.38	8.68			
125	7.22	7.59	7.97	8.25	8.39	8.36	8.14	7.76	7.31	6.93	6.64	6.48	6.46	6.53	6.68	6.93			
130	5.72	6.04	6.38	6.62	6.75	6.72	6.53	6.22	5.82	5.48	5.24	5.10	5.08	5.13	5.26	5.47			
135	4.46	4.73	5.04	5.26	5.36	5.34	5.18	4.91	4.55	4.26	4.04	3.94	3.92	3.96	4.06	4.23			
140	3.43	3.66	3.92	4.12	4.22	4.20	4.06	3.83	3.51	3.27	3.07	2.99	2.98	3.01	3.09	3.23			
145	2.58	2.77	3.00	3.17	3.26	3.26	3.13	2.93	2.65	2.45	2.29	2.22	2.22	2.24	2.30	2.41			
150	1.89	2.05	2.24	2.38	2.46	2.48	2.35	2.18	1.94	1.81	1.67	1.62	1.61	1.64	1.68	1.75			
155	1.37	1.49	1.64	1.76	1.84	1.85	1.74	1.60	1.40	1.32	1.21	1.17	1.17	1.19	1.21	1.26			
160	0.99	1.07	1.19	1.29	1.37	1.38	1.29	1.16	0.99	0.96	0.88	0.85	0.86	0.88	0.89	0.92			
165	0.73	0.77	0.86	0.93	1.01	1.03	0.94	0.84	0.70	0.69	0.64	0.63	0.65	0.68	0.68	0.69			
170	0.53	0.53	0.57	0.61	0.67	0.67	0.62	0.55	0.47	0.47	0.44	0.44	0.45	0.50	0.50	0.51			
175	0.28	0.26	0.28	0.29	0.22	0.22	0.28	0.26	0.21	0.22	0.19	0.22	0.21	0.16	0.20	0.27			
180	0.00	0.00	0.00	0.00	0.00	0.00	0.00	0.00	0.00	0.00	0.00	0.00	0.00	0.00	0.00	0.00			

C Range: 0 - 360DEG
 C Interval: 22.5DEG
 Test Speed: HIGH
 Temperature:25.3DEG
 Operators:YY
 Test Date:2019-08-26

γ Range: 0 - 180DEG
 γ Interval: 0.5DEG
 Test System:EVERFINE GO-R5000_V2 SYSTEM V2.0.366
 Humidity:28.2%
 Test Distance:1.191m [K=1.0000]
 Remarks: