

**LM-79-08 Test Report**  
For  
**RAB LIGHTING INC**

**(Brand Name: N/A)**

170 Ludlow Ave, PO BOX 970, Northvale, NJ 07647-2305 USA

**Model name(s): DLC0048(C6R119FAUNVW)**

**Report Type:** Testing and Report According to IES LM-79-2008

**Type of  
Luminaire:** Downlights

**Report Date:** 2020-09-12

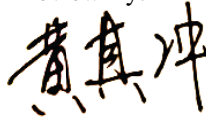
**Prepared By:**

Test & Report By:



Engineer: Sun Fangfang

Review By:



Manager: Huang Qichong

### 1.1 Rated Values:

Rated Voltage / Frequency	120V-277Vac, 60 Hz
Nominal Power	11.0W
Rated Initial Lamp Lumen	900 lm
Declared CCT	3000K/3500K/4000K/5000K

### 1.2 Test Specifications:

Test item	<ol style="list-style-type: none"><li>1. Total Luminous Flux</li><li>2. Luminous Distribution Intensity</li><li>3. Luminous Efficacy</li><li>4. Correlated Color Temperature</li><li>5. Color Rendering Index</li><li>6. Chromaticity Coordinate</li><li>7. Electrical Parameters</li></ol>
Reference Standard	<ol style="list-style-type: none"><li>1. IES LM-79-2008 Electrical and Photometric Measurements of Solid-State Lighting Products</li><li>2. ANSI C78.377-2015 Specifications for the Chromaticity of Solid State Lighting Products</li><li>3. CIE 13.3-1995 Method of Measuring and Specifying Colour Rendering Properties of Light Sources</li><li>4. CIE 15-2004 Technical Report Colorimetry</li><li>5. IESNA LM-16-93 Practical Guide to Colorimetry of Light Source</li><li>6. IESNA TM-16-05 Technical Memorandum on Light Emitting Diode (LED) Sources and Systems</li></ol>
Reference Work Instruction	QD25

### 1.3 Test Methods

#### 1) Photometric and Light Distribution Measurement – Goniophotometer Method:

Photometric parameters were measured using the goniophotometer and software. The ambient temperature shall be maintained at 25°C ±1°C, measured at a point not more than 1 m from the sample and at the same height as the sample. The sample was operated at 120 or rated Volts AC, 60Hz. It was stabilized before measurement was made. Luminous flux, luminaire efficacy, zonal lumen were calculated from the software taken at 1°vertical intervals and 22.5°horizontal intervals.

#### 2) Chromaticity Measurement – Sphere-Spectroradiometer Method:

Chromaticity parameters were measured using an integrating sphere, a spectroradiometer and software. The ambient temperature condition inside the sphere was maintained at 25°C ±1°C. The sample measurements were made using a spectroradiometer connected by a fiber optic cable and detector through the detector port of the integrating sphere. The sample was operated at 120 or rated Volts AC, 60Hz. It was stabilized before measurement was made. Chromaticity coordinates, correlated color temperature and color rendering index were calculated from the spectral power distribution taken at 5 nm intervals over the range of 380 to 780 nm.

#### 3) Electrical Measurements:

Electrical parameters were measured using power meters incorporated in goniophotometer or sphere-spectroradiometer system. The ambient temperature surrounding the sample was maintained at 25°C ±1°C. The sample was operated at 120 or rated Volts AC, 60Hz. It was stabilized before measurement was made. Voltage, frequency, current, power, power factor and total harmonic distortion were measured by and read from the power meter.

## 2.1.1 Electrical, Photometric and Chromaticity Measurements

<b>Test date</b>	2020-07-18	<b>Test Ambient:</b>	25.3 °C
<b>Test Orientation</b>	As intended	<b>Stabilization Time (min)</b>	90
<b>Model Number</b>	DLC0048(C6R119FAUNVW)	3000K	

### Electrical Measurement:

Sample No.	Voltage (Vac)	Frequency (Hz )	Current (A)	Power (W)	Power Factor
202007180110	120.0	60	0.084	10.10	0.995

### Chromaticity Measurement - Sphere-Spectroradiometer Method:

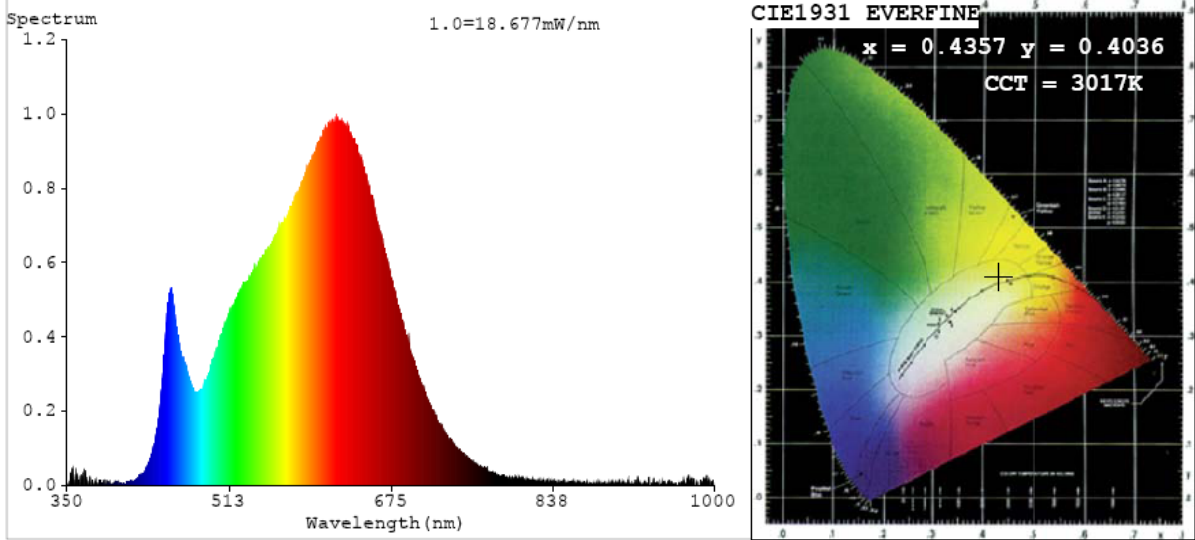
Parameter	Result	Special Color Rendering Indices			
Test Voltage (V)	120	R1	94	R9	61
Frequency (Hz)	60	R2	97	R10	92
CCT (K)	3017	R3	99	R11	94
Duv	0.0000	R4	93	R12	80
Chromaticity (x, y)	x=0.4357 y=0.4036	R5	93	R13	95
Chromaticity (u', v')	u'=0.2500 v'=0.5210	R6	96	R14	99
Color Rendering Index (CRI)	93.3	R7	92	R15	90
R9	61	R8	83	--	--

### Photometric Measurement – Goniophotometer Method:

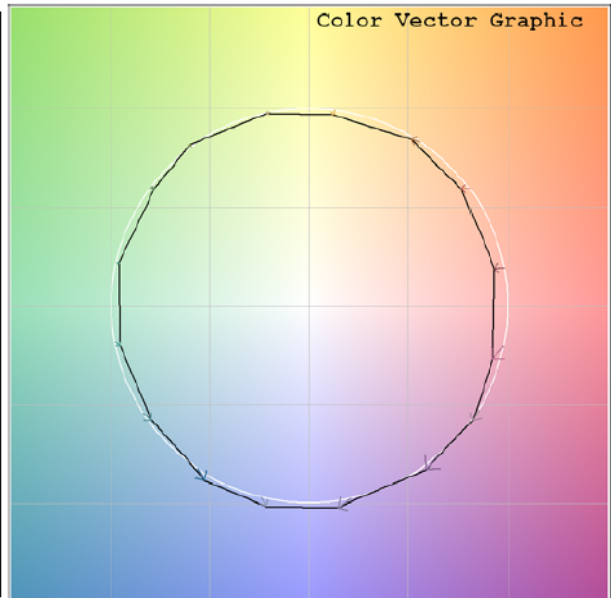
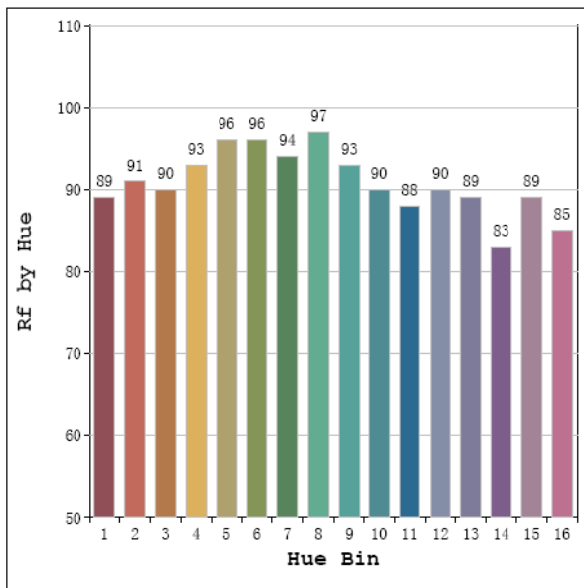
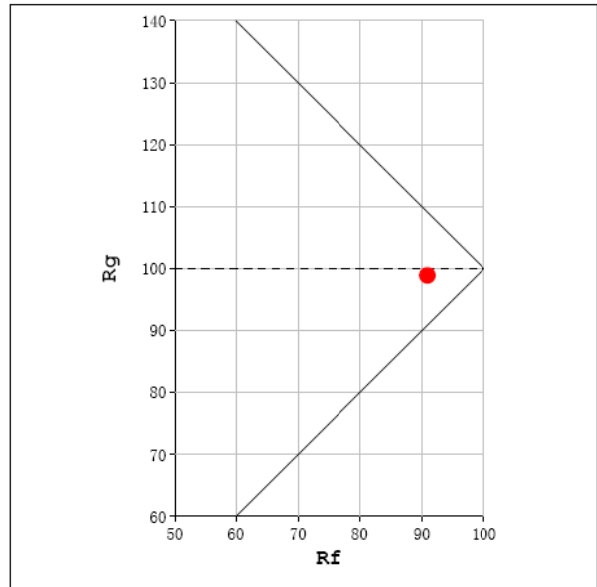
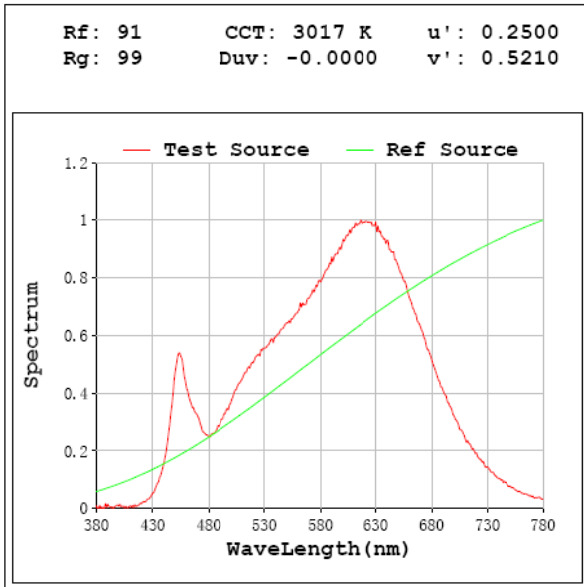
Parameter	Result
Test Voltage (V)	120.0
Frequency (Hz)	60
Total Luminous (lm)	924.52
Luminous Efficacy (lm/W)	91.54
Beam Angle (°)	85.5
Center Beam Candle Power (cd)	476.0

Parameter	Result
Test Voltage (V)	277.0
Frequency (Hz)	60
Total Luminous (lm)	921.3
Luminous Efficacy (lm/W)	88.41

# Spectral Power Distribution & Chromaticity Diagram



## T30

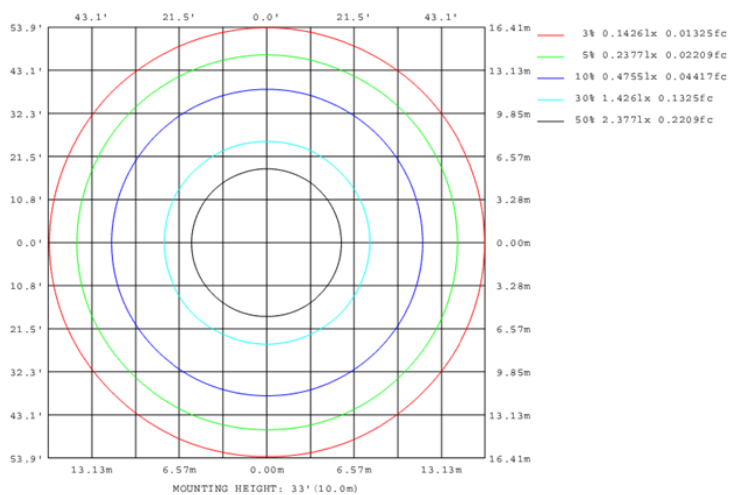
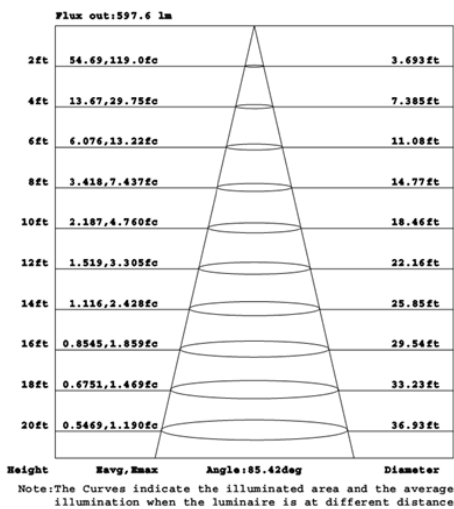
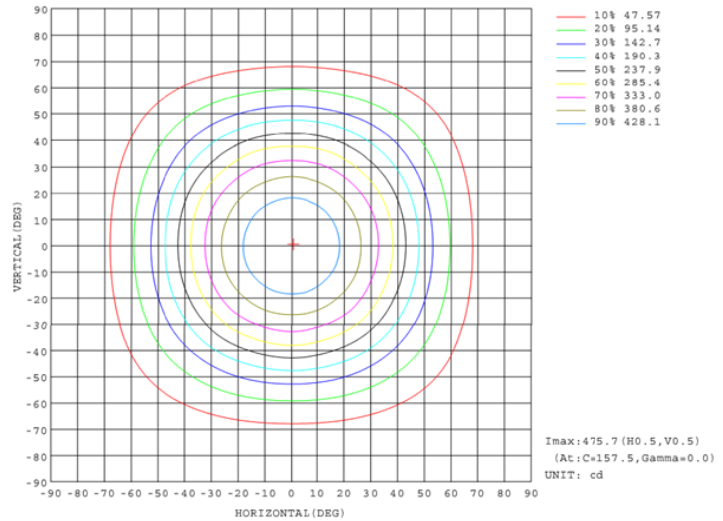
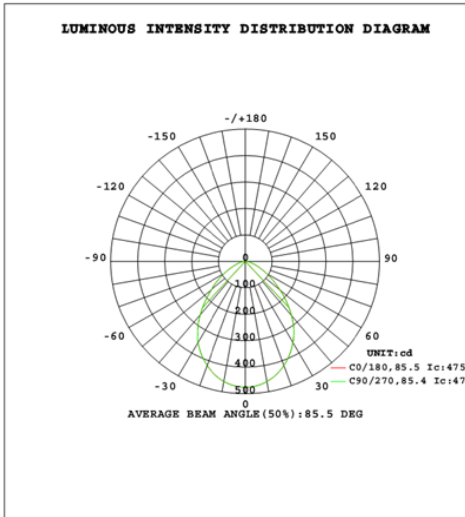


# Zonal Lumen Tabulation

Zonal Lumen Summary		
Zone	Lumens	% Luminaire
0-30	348.2	37.7%
0-40	543.0	58.7%
0-60	822.5	89.0%
60-90	102.0	11.0%
70-100	39.8	4.3%
90-120	0.0	0.0%
0-90	924.5	100.0%
90-180	0.0	0.0%
0-180	924.5	100.0%

Lumens Per Zone					
Zone	Lumens	% Total	Zone	Lumens	% Total
0-10	44.7	4.8%	90-100	0.0	0.0%
10-20	124.7	13.5%	100-110	0.0	0.0%
20-30	178.9	19.3%	110-120	0.0	0.0%
30-40	194.8	21.1%	120-130	0.0	0.0%
40-50	166.1	18.0%	130-140	0.0	0.0%
50-60	113.3	12.3%	140-150	0.0	0.0%
60-70	62.2	6.7%	150-160	0.0	0.0%
70-80	27.8	3.0%	160-170	0.0	0.0%
80-90	12.1	1.3%	170-180	0.0	0.0%

## Photometric Data





## 2.1.2 Electrical, Photometric and Chromaticity Measurements

<b>Test date</b>	2020-07-18	<b>Test Ambient:</b>	25.3 °C
<b>Test Orientation</b>	As intended	<b>Stabilization Time (min)</b>	90
<b>Model Number</b>	DLC0048(C6R119FAUNVW)		3500K

### Electrical Measurement:

Sample No.	Voltage (Vac)	Frequency (Hz)	Current (A)	Power (W)	Power Factor
202007180110	120.0	60	0.082	9.83	0.994

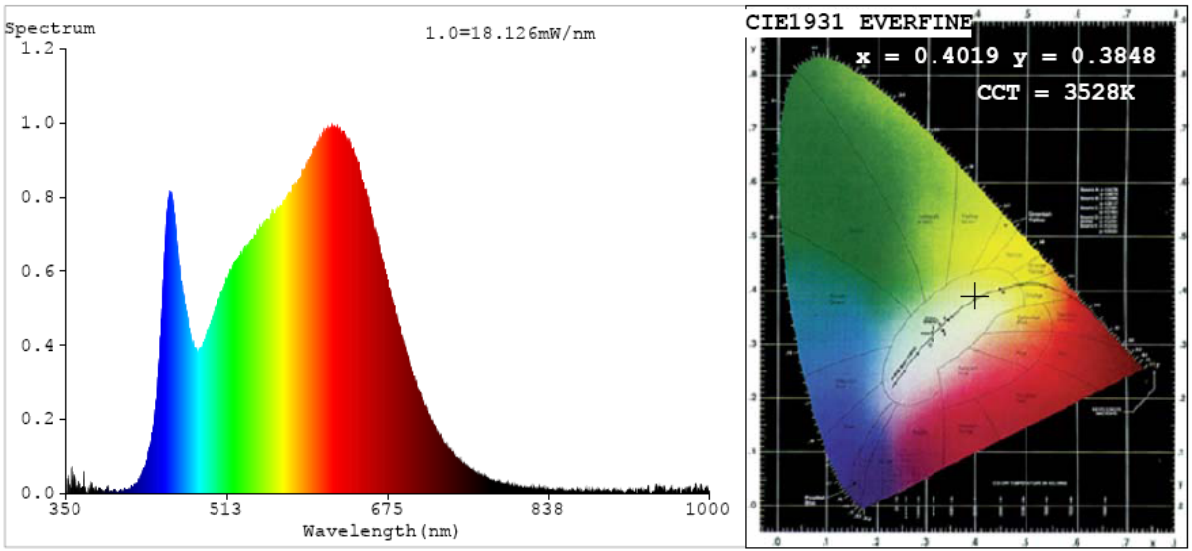
### Chromaticity Measurement - Sphere-Spectroradiometer Method:

Parameter	Result
Test Voltage (V)	120
Frequency (Hz)	60
CCT (K)	3528
Duv	0.0018
Chromaticity (x, y)	x=0.4019 y=0.3848
Chromaticity (u', v')	u'=0.2359 v'=0.5083
Color Rendering Index (CRI)	95.5
R9	77
Total Luminous (lm)	988.9
Luminous Efficacy (lm/W)	100.60

Special Color Rendering Indices			
R1	97	R9	77
R2	99	R10	98
R3	99	R11	99
R4	95	R12	78
R5	96	R13	99
R6	96	R14	100
R7	93	R15	95
R8	89	--	--

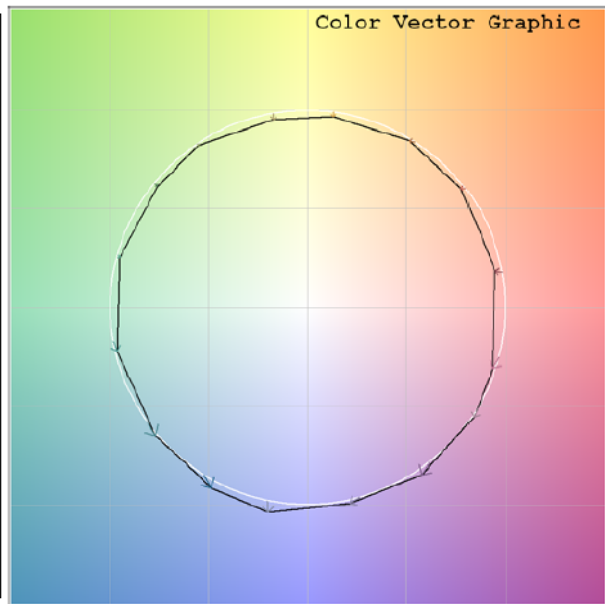
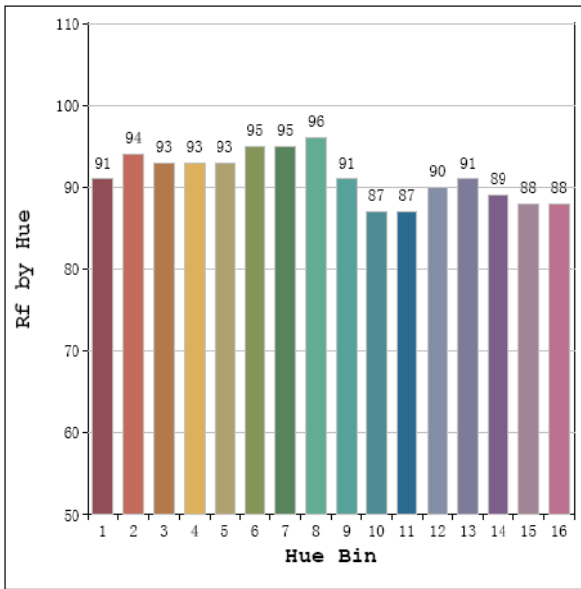
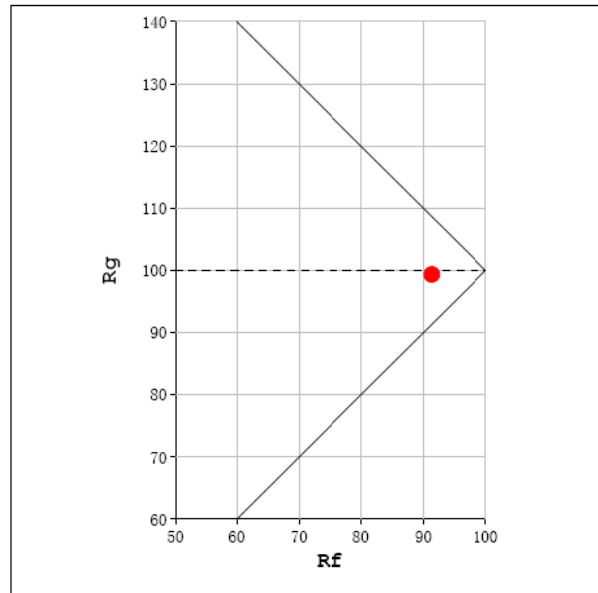
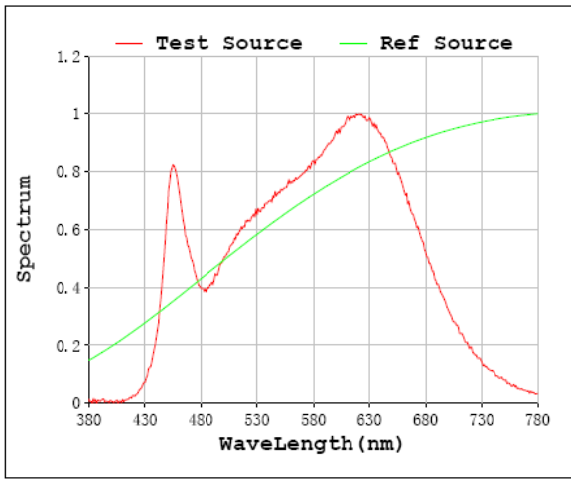
Parameter	Result
Test Voltage (V)	277.0
Frequency (Hz)	60
Total Luminous (lm)	987.5
Luminous Efficacy (lm/W)	97.03

## Spectral Power Distribution & Chromaticity Diagram



# T30

Rf: 91 CCT: 3528 K u': 0.2359  
 Rg: 99 Duv: -0.0018 v': 0.5083





### 2.1.3 Electrical, Photometric and Chromaticity Measurements

Test date	2020-07-18	Test Ambient:	25.3 °C
Test Orientation	As intended	Stabilization Time (min)	90
Model Number	DLC0048(C6R119FAUNVW)		4000K

#### Electrical Measurement:

Sample No.	Voltage (Vac)	Frequency (Hz)	Current (A)	Power (W)	Power Factor
202007180110	120.0	60	0.082	9.78	0.994

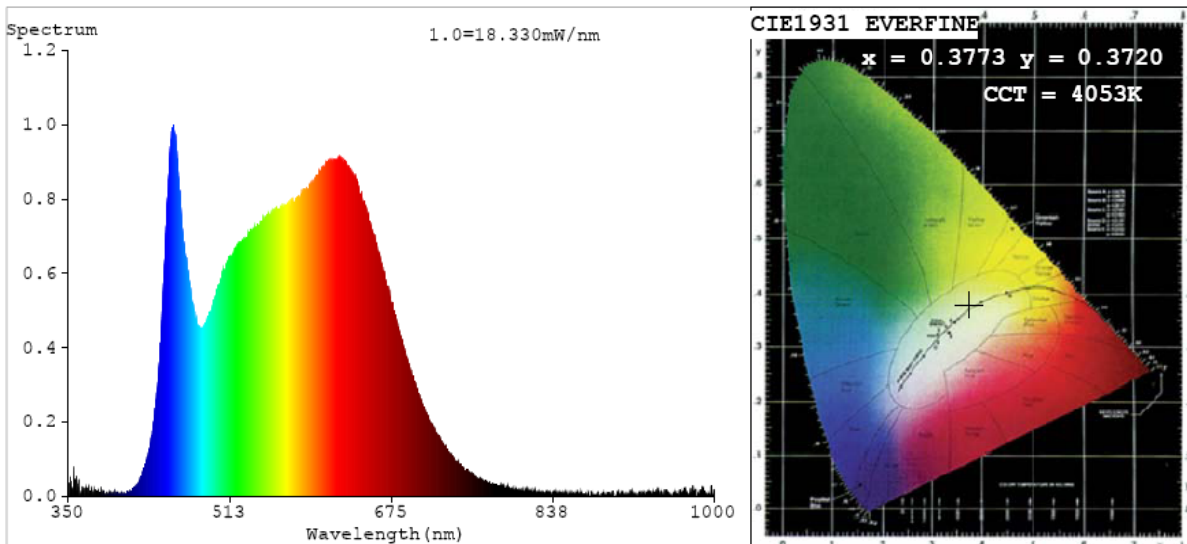
#### Chromaticity Measurement - Sphere-Spectroradiometer Method:

Parameter	Result
Test Voltage (V)	120
Frequency (Hz)	60
CCT (K)	4053
Duv	0.0013
Chromaticity (x, y)	x=0.3773 y=0.3720
Chromaticity (u', v')	u'=0.2249 v'=0.4990
Color Rendering Index (CRI)	96.1
R9	83
Total Luminous (lm)	1007
Luminous Efficacy (lm/W)	103.00

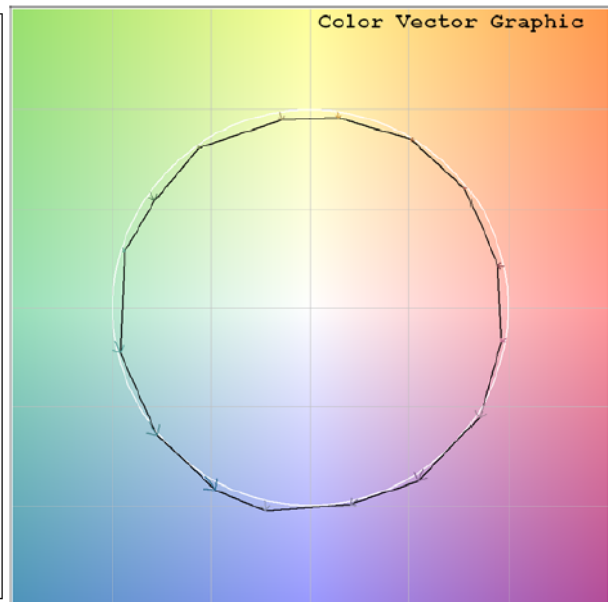
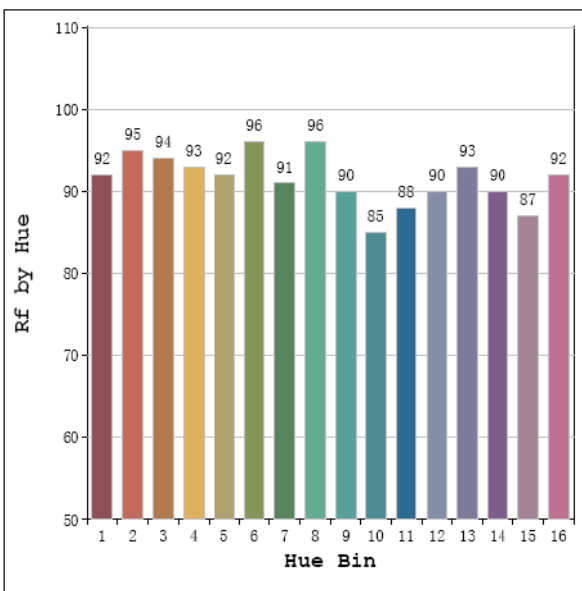
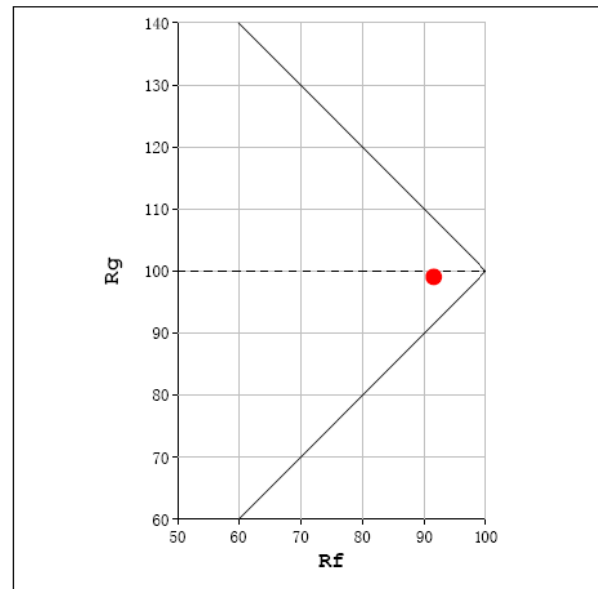
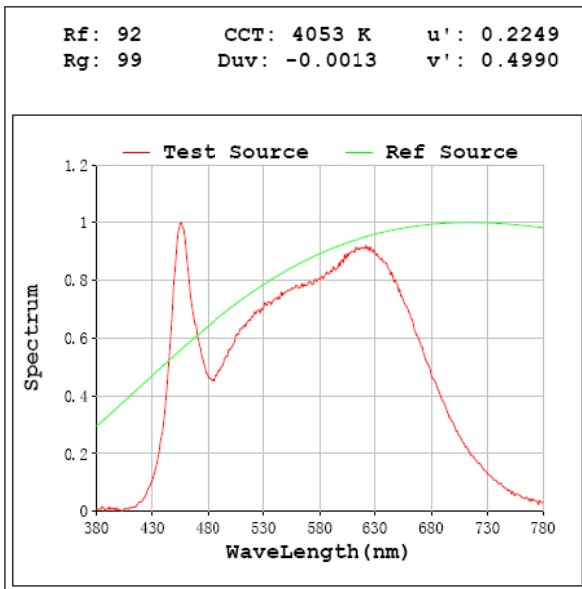
Special Color Rendering Indices			
R1	98	R9	83
R2	99	R10	98
R3	99	R11	96
R4	95	R12	75
R5	96	R13	99
R6	96	R14	99
R7	94	R15	96
R8	92	--	--

Parameter	Result
Test Voltage (V)	277.0
Frequency (Hz)	60
Total Luminous (lm)	1007
Luminous Efficacy (lm/W)	99.43

### Spectral Power Distribution & Chromaticity Diagram



# T30



## 2.1.4 Electrical, Photometric and Chromaticity Measurements

<b>Test date</b>	2020-07-18	<b>Test Ambient:</b>	25.3 °C
<b>Test Orientation</b>	As intended	<b>Stabilization Time (min)</b>	90
<b>Model Number</b>	DLC0048(C6R119FAUNVW)		5000K

### Electrical Measurement:

Sample No.	Voltage (Vac)	Frequency (Hz)	Current (A)	Power (W)	Power Factor
202007180110	120.0	60	0.084	10.07	0.994

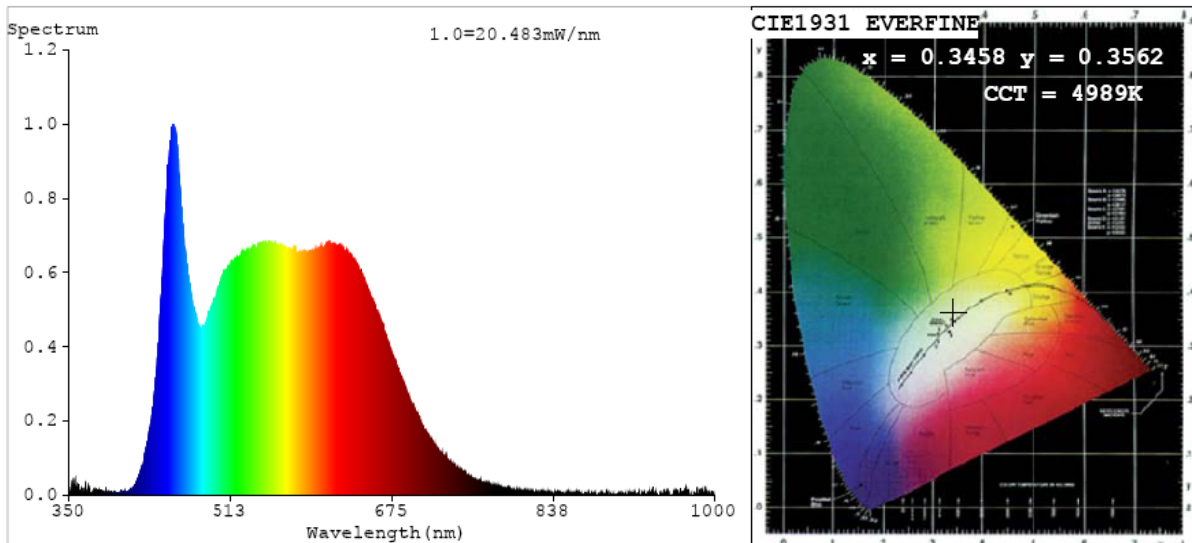
### Chromaticity Measurement - Sphere-Spectroradiometer Method:

Parameter	Result
Test Voltage (V)	120
Frequency (Hz)	60
CCT (K)	4989
Duv	0.0020
Chromaticity (x, y)	x=0.3458 y=0.3562
Chromaticity (u', v')	u'=0.2101 v'=0.4870
Color Rendering Index (CRI)	95.1
R9	81
Total Luminous (lm)	962.9
Luminous Efficacy (lm/W)	95.60

Special Color Rendering Indices			
R1	96	R9	81
R2	98	R10	94
R3	98	R11	94
R4	93	R12	71
R5	94	R13	97
R6	95	R14	99
R7	95	R15	94
R8	92	--	--

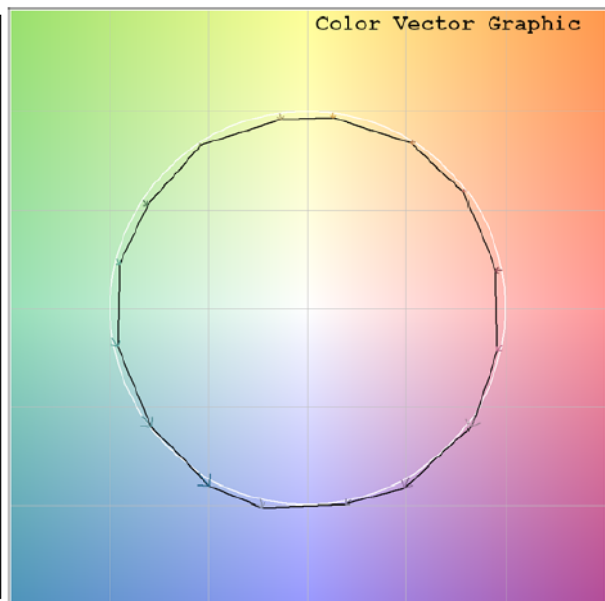
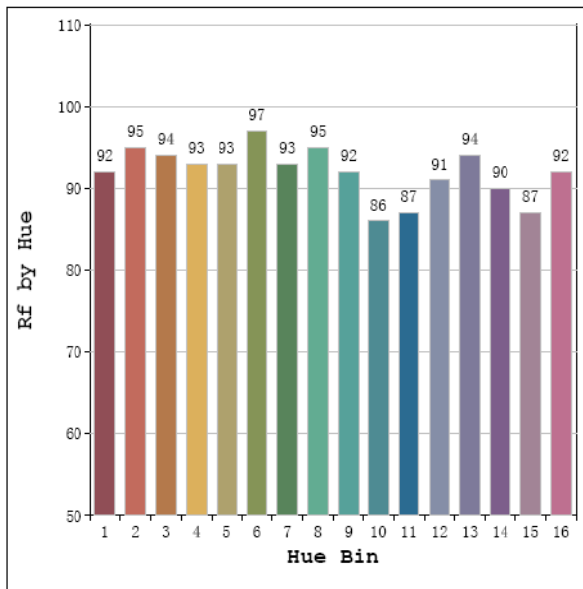
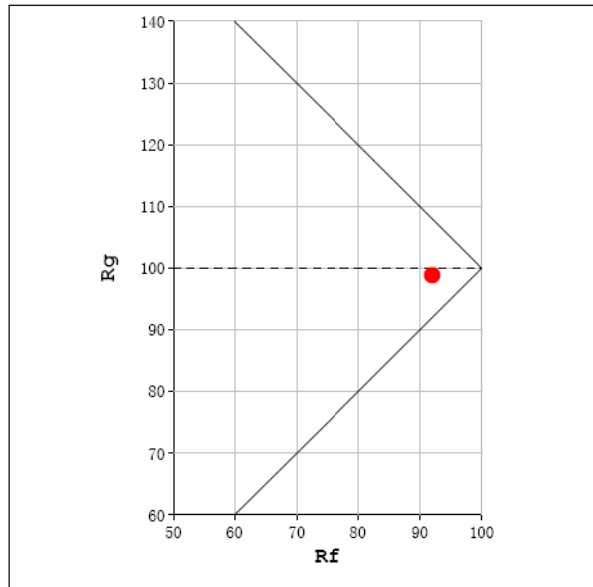
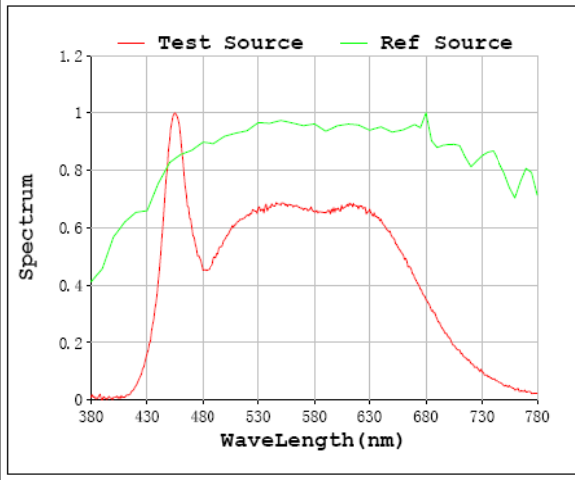
Parameter	Result
Test Voltage (V)	277.0
Frequency (Hz)	60
Total Luminous (lm)	961.5
Luminous Efficacy (lm/W)	92.40

## Spectral Power Distribution & Chromaticity Diagram

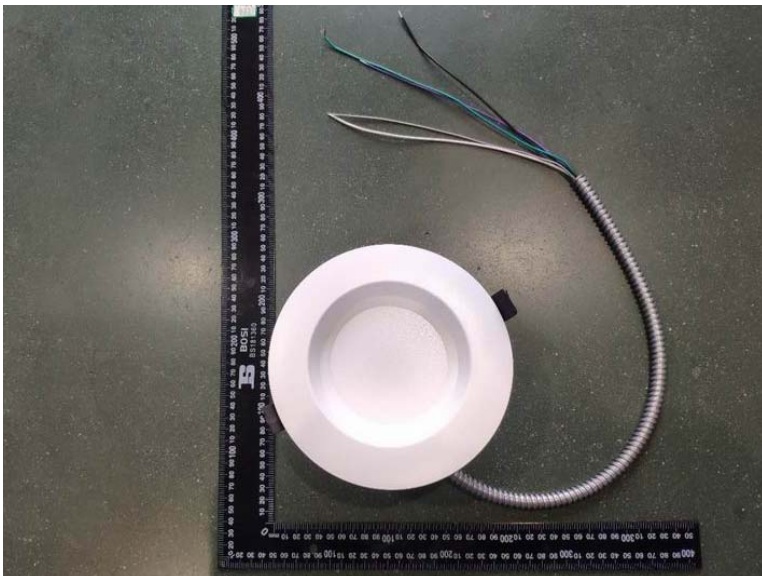
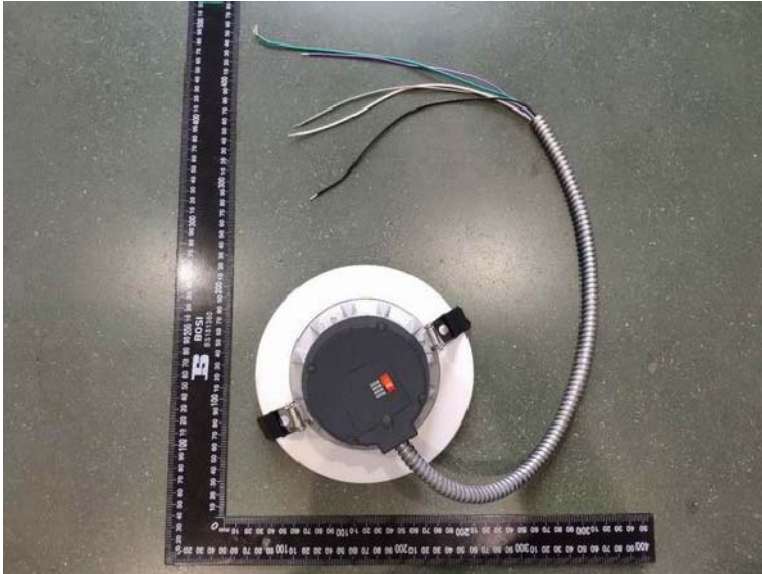


# T30

Rf: 92      CCT: 4989 K      u': 0.2101  
 Rg: 99      Duv: 0.0020      v': 0.4870



### 3. Product Photo



**\*\*\*\*\* END OF REPORT \*\*\*\*\***