

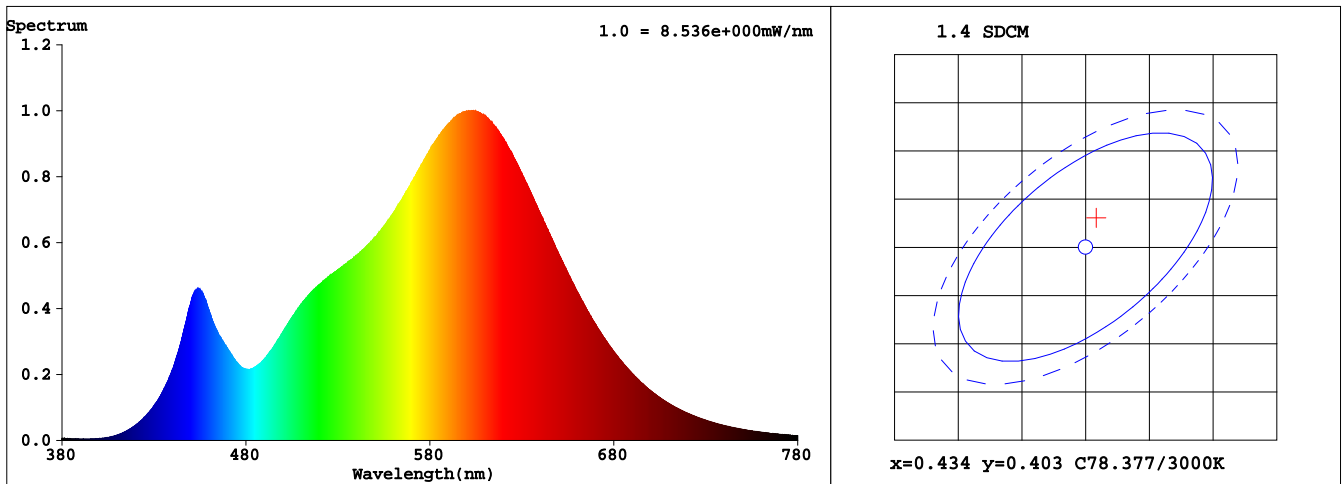
Spectrum Test Report

Sample : GU10-4.5-830-35D-DIM Date : 2020-01-10 15:36:43
Specification : Sam. Status :
Sample No. : Standard : LM-79-80
Manufacturer : RAB Lighting Inc Instrument : HaasSuite(EVERFINE)
Remark : Test by :
Device SN :

Test Condition

Temperature : 26.4Deg RH : 30.1%
WL Range : 380nm-780nm IP : 54371 (83%)
Test Mode : Fast Test T : 447 ms
Sensitivity : High

Spectrum



Colorimetric Parameters

Chromaticity Coordinate: $x = 0.4347$ $y = 0.4062$ / $u' = 0.2482$ $v' = 0.5219$ ($duv=1.18e-03$)

CCT= 3056K Prcp WL: Ld=582.2nm Purity=52.4%

Peak WL: Lp=604nm FWHM: =129.9nm Ratio:R=22.4% G=74.9% B=2.7%

Render Index: Ra = 82.3

EEL: 0.11189 A+

R1 =80 R2 =91 R3 =96 R4 =80 R5 =81 R6 =89 R7 =83
R8 =58 R9 =4 R10=79 R11=79 R12=72 R13=83 R14=99 R15=73
LEVEL:OUT WHITE:ANSI_3000K

Photometric & Radiometric Parameters

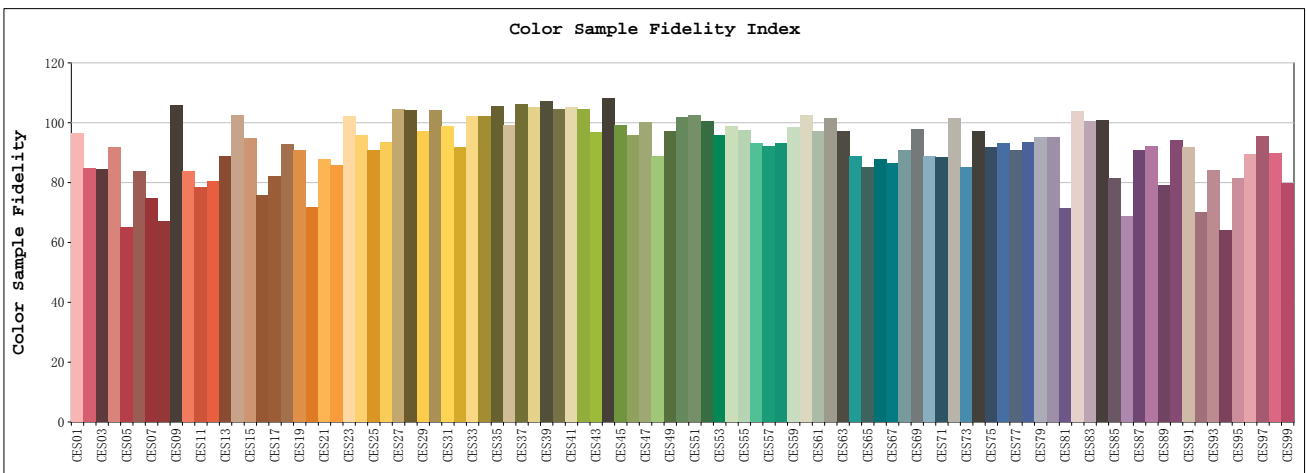
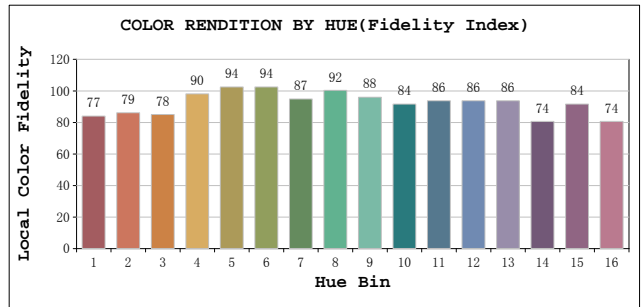
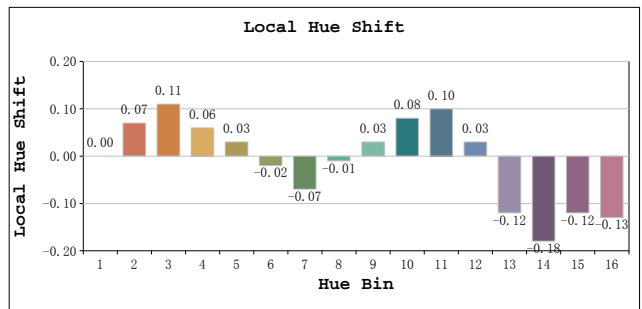
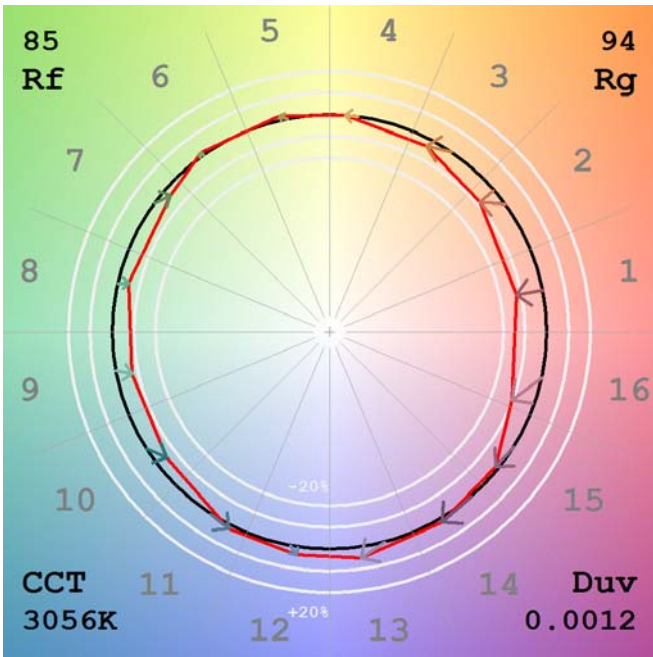
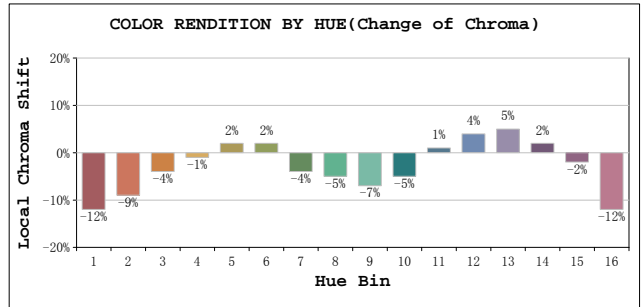
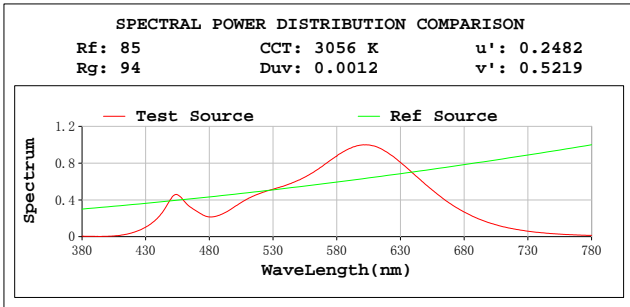
Flux = 421.21 lm Eff. : 97.28 lm/W Fe = 1.2730 W

Flux of emitted photons($\mu\text{mol/s}$):6.1645 Fluo. and blue light ratio:8.181 Fluorescent eff.:199.8

Electrical parameters

V = 120.04 V I = 0.04730 A P = 4.330 W PF = 0.7626

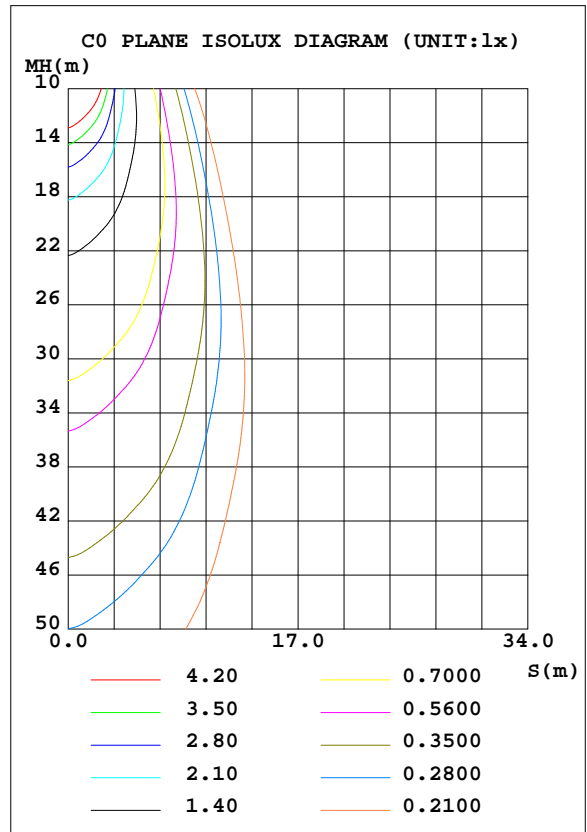
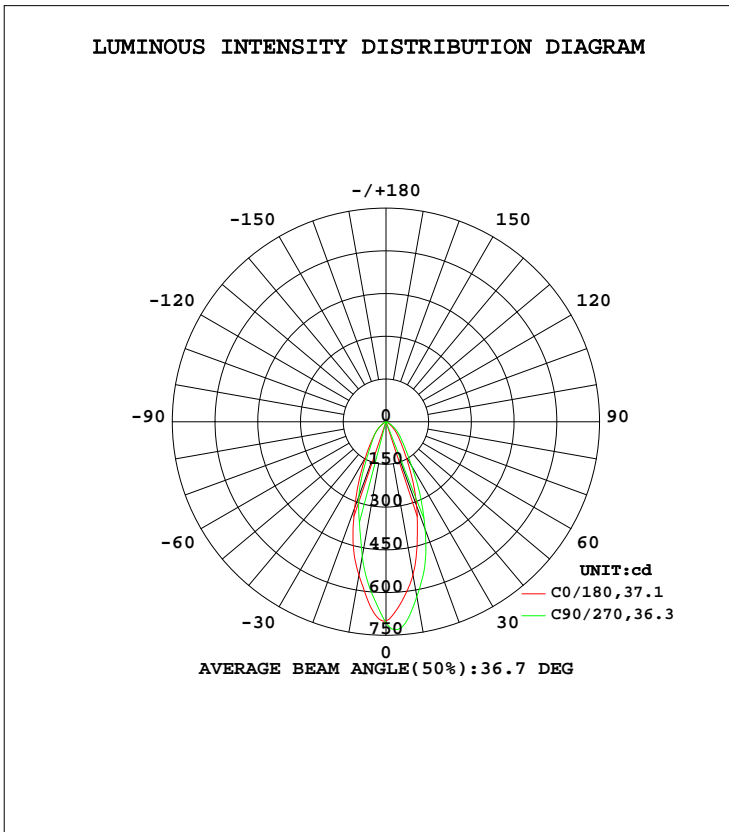
TM30



LUMINAIRE PHOTOMETRIC TEST REPORT

NAME: GU10-4.5-830-35D-DIM	TYPE: /	WEIGHT: /
SPEC.: /	DIM.: /	SERIAL No.: /
MFR.: RAB Lighting Inc	SUR.: /	Shielding Angle: /

DATA OF LAMP		PHOTOMETRIC DATA				Eff: 95.71 lm/W
MODEL	GU10	I _{max} (cd)	733.5	S/MH(C0/180)	0.61	
NOMINAL POWER(W)	5	LOR(%)	100.0	S/MH(C90/270)	0.49	
RATED VOLTAGE(V)	120	TOTAL FLUX(lm)	414.45	η UP, DN(C0-180)	0.0, 55.3	
NOMINAL FLUX(lm)	414.446	CIE CLASS	DIRECT	η UP, DN(C180-360)	0.0, 44.6	
LAMPS INSIDE	1	η up(%)	0.0	CIBSE SHR NOM	0.50	
TEST VOLTAGE(V)	120	η down(%)	100.0	CIBSE SHR MAX	0.65	



C Range: 0 - 360DEG
 C Interval: 22.5DEG
 Test Speed: HIGH
 Temperature: 27.1DEG
 Operators:
 Test Date: 2020-01-10

γ Range: 0 - 180DEG
 γ Interval: 0.5DEG
 Test System: EVERFINE GO-R5000_V2 SYSTEM V2.0.366
 Humidity: 24.3%
 Test Distance: 1.900m [K=0.6277]
 Remarks:

ZONAL FLUX DIAGRAM

ZONAL FLUX DIAGRAM:

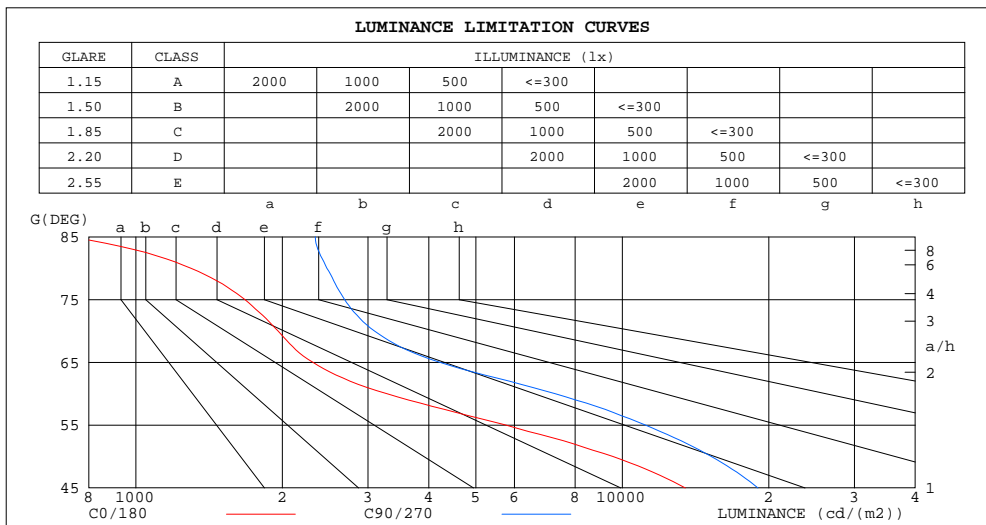
γ	C0	C45	C90	C135	C180	C225	C270	C315	γ	Φ zone	Φ total	lum,lamp
5	634.1	676.2	717.1	705.0	648.0	608.6	599.4	606.7	0- 5	16.14	16.14	3.89,3.89
10	546.2	581.7	623.9	607.9	547.5	493.6	479.7	489.7	5- 10	42.55	58.69	14.2,14.2
15	425.2	457.3	525.8	491.4	445.8	369.6	362.9	358.8	10- 15	57.49	116.2	28,28
20	314.8	332.7	401.1	358.2	322.2	277.1	278.1	265.7	15- 20	61.10	177.3	42.8,42.8
25	215.8	247.6	283.6	256.7	220.8	199.0	187.8	193.5	20- 25	56.49	233.8	56.4,56.4
30	139.6	169.8	183.2	176.7	144.6	130.6	121.0	129.0	25- 30	46.67	280.4	67.7,67.7
35	93.72	111.2	122.4	115.2	97.59	88.58	86.71	87.54	30- 35	35.97	316.4	76.3,76.3
40	66.33	76.16	88.06	76.28	68.09	62.30	66.03	60.86	35- 40	28.05	344.4	83.1,83.1
45	47.24	52.62	66.63	51.90	48.50	42.87	49.40	41.25	40- 45	22.10	366.6	88.4,88.4
50	30.46	36.68	48.56	36.14	32.31	29.39	33.26	28.44	45- 50	16.89	383.4	92.5,92.5
55	16.39	26.00	31.74	25.18	17.38	19.63	19.15	18.66	50- 55	12.03	395.5	95.4,95.4
60	8.138	17.13	18.04	16.43	8.428	12.24	10.08	11.51	55- 60	7.876	403.3	97.3,97.3
65	4.845	9.814	8.840	8.980	4.809	6.875	5.671	6.741	60- 65	4.697	408.0	98.5,98.5
70	3.324	5.537	5.247	5.245	3.442	4.015	3.450	3.935	65- 70	2.784	410.8	99.1,99.1
75	2.150	3.382	3.448	3.374	2.374	2.381	2.020	2.238	70- 75	1.786	412.6	99.6,99.6
80	1.117	1.916	2.127	2.047	1.383	1.159	0.8788	0.9861	75- 80	1.091	413.7	99.8,99.8
85	0.3167	0.7802	1.011	0.9495	0.5273	0.2747	0.1223	0.1571	80- 85	0.5192	414.2	99.9,99.9
90	0.0011	0.0825	0.2020	0.1742	0.0219	0.0010	0.0009	0.0008	85- 90	0.1328	414.4	100,100
95	0.0007	0.0010	0.0010	0.0010	0.0009	0.0011	0.0012	0.0011	90- 95	0.0072	414.4	100,100
100	0.0007	0.0010	0.0012	0.0010	0.0012	0.0014	0.0014	0.0012	95-100	0.0006	414.4	100,100
105	0.0010	0.0011	0.0013	0.0014	0.0014	0.0017	0.0016	0.0017	100-105	0.0007	414.4	100,100
110	0.0011	0.0012	0.0013	0.0014	0.0015	0.0020	0.0020	0.0020	105-110	0.0008	414.4	100,100
115	0.0015	0.0024	0.0024	0.0029	0.0018	0.0025	0.0025	0.0024	110-115	0.0009	414.4	100,100
120	0.0024	0.0029	0.0026	0.0029	0.0022	0.0028	0.0032	0.0029	115-120	0.0012	414.4	100,100
125	0.0028	0.0031	0.0031	0.0030	0.0030	0.0036	0.0043	0.0035	120-125	0.0014	414.4	100,100
130	0.0041	0.0042	0.0040	0.0036	0.0043	0.0048	0.0058	0.0047	125-130	0.0016	414.4	100,100
135	0.0061	0.0056	0.0060	0.0055	0.0072	0.0083	0.0096	0.0083	130-135	0.0022	414.4	100,100
140	0.0121	0.0110	0.0110	0.0110	0.0124	0.0143	0.0160	0.0148	135-140	0.0036	414.4	100,100
145	0.0213	0.0198	0.0185	0.0193	0.0202	0.0233	0.0258	0.0246	140-145	0.0056	414.4	100,100
150	0.0354	0.0318	0.0305	0.0312	0.0313	0.0349	0.0394	0.0374	145-150	0.0080	414.4	100,100
155	0.0545	0.0481	0.0467	0.0471	0.0474	0.0512	0.0585	0.0560	150-155	0.0106	414.4	100,100
160	0.0747	0.0665	0.0633	0.0651	0.0679	0.0729	0.0804	0.0802	155-160	0.0128	414.4	100,100
165	0.0857	0.0788	0.0747	0.0778	0.0849	0.0906	0.0969	0.0991	160-165	0.0131	414.4	100,100
170	0.0772	0.0738	0.0717	0.0733	0.0797	0.0828	0.0880	0.0914	165-170	0.0101	414.4	100,100
175	0.0526	0.0521	0.0551	0.0539	0.0507	0.0509	0.0509	0.0510	170-175	0.0049	414.4	100,100
180	0.0003	0.0001	0	0	0.0002	0.0005	0.0005	0.0006	175-180	0.0008	414.4	100,100
DEG	LUMINOUS INTENSITY:cd								UNIT:lm			

C Range: 0 - 360DEG
 C Interval: 22.5DEG
 Test Speed: HIGH
 Temperature:27.1DEG
 Operators:
 Test Date:2020-01-10

γ Range: 0 - 180DEG
 γ Interval: 0.5DEG
 Test System:EVERFINE GO-R5000_V2 SYSTEM V2.0.366
 Humidity:24.3%
 Test Distance:1.900m [K=0.6277]
 Remarks:

LUMINANCE LIMITATION CURVES

NAME: GU10-4.5-830-35D-DIM	TYPE: /	WEIGHT: /
SPEC.: /	DIM.: /	SERIAL No.: /
MFR.: RAB Lighting Inc	SUR.: /	Shielding Angle: /



LUMINANCE cd/(m2)		
G (DEG)	C0/180	C90/270
85	733	2338
80	1297	2470
75	1675	2686
70	1959	3093
65	2311	4217
60	3281	7273
55	5762	11156
50	9554	15231
45	13470	18997

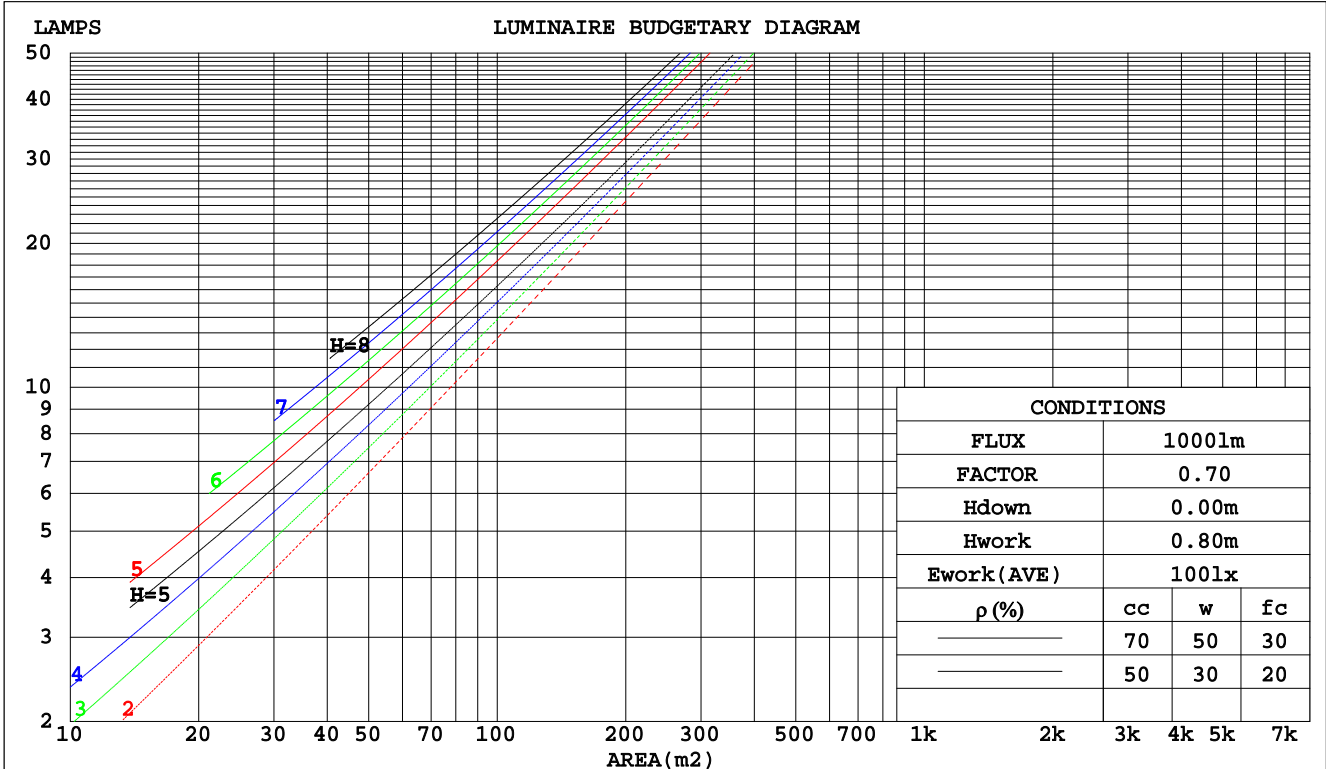
C Range: 0 - 360DEG
 C Interval: 22.5DEG
 Test Speed: HIGH
 Temperature: 27.1DEG
 Operators:
 Test Date: 2020-01-10

γ Range: 0 - 180DEG
 γ Interval: 0.5DEG
 Test System: EVERFINE GO-R5000_V2 SYSTEM V2.0.366
 Humidity: 24.3%
 Test Distance: 1.900m [K=0.6277]
 Remarks:

CU AND LUMINAIRE BUDGETARY ESTIMATE DIAGRAM

NAME: GU10-4.5-830-35D-DIM	TYPE: /	WEIGHT: /
SPEC.: /	DIM.: /	SERIAL No.: /
MFR.: RAB Lighting Inc	SUR.: /	Shielding Angle: /

pcc	80%			70%			50%			30%			10%			0
pw	50%	30%	10%	50%	30%	10%	50%	30%	10%	50%	30%	10%	50%	30%	10%	0
pfc	20%			20%			20%			20%			20%			0
RCR	RCR:Room Cavity Ratio						Coefficients of Utilization(CU)									
0.0	1.19	1.19	1.19	1.16	1.16	1.16	1.11	1.11	1.11	1.06	1.06	1.06	1.02	1.02	1.02	.00
1.0	1.10	1.08	1.05	1.08	1.06	1.04	1.04	1.02	1.00	1.00	.99	.97	.97	.96	.95	.93
2.0	1.02	.98	.94	1.00	.96	.93	.97	.94	.91	.94	.91	.89	.91	.89	.87	.86
3.0	.95	.89	.85	.93	.89	.85	.91	.87	.83	.88	.85	.82	.86	.83	.81	.79
4.0	.88	.83	.78	.87	.82	.78	.85	.80	.77	.83	.79	.76	.81	.78	.75	.73
5.0	.83	.77	.72	.82	.76	.72	.80	.75	.71	.78	.74	.70	.77	.73	.70	.68
6.0	.78	.71	.67	.77	.71	.67	.75	.70	.66	.74	.69	.66	.72	.68	.65	.64
7.0	.73	.67	.63	.72	.66	.62	.71	.66	.62	.70	.65	.62	.69	.65	.61	.60
8.0	.69	.63	.59	.68	.63	.59	.67	.62	.58	.66	.61	.58	.65	.61	.58	.56
9.0	.65	.59	.55	.65	.59	.55	.64	.59	.55	.63	.58	.55	.62	.58	.55	.53
10.0	.62	.56	.52	.62	.56	.52	.61	.56	.52	.60	.55	.52	.59	.55	.52	.50



C Range: 0 - 360DEG
 C Interval: 22.5DEG
 Test Speed: HIGH
 Temperature: 27.1DEG
 Operators:
 Test Date: 2020-01-10

γ Range: 0 - 180DEG
 γ Interval: 0.5DEG
 Test System: EVERFINE GO-R5000_V2 SYSTEM V2.0.366
 Humidity: 24.3%
 Test Distance: 1.900m [K=0.6277]
 Remarks:

WEC AND CCEC

NAME: GU10-4.5-830-35D-DIM	TYPE: /	WEIGHT: /
SPEC.: /	DIM.: /	SERIAL No.: /
MFR.: RAB Lighting Inc	SUR.: /	Shielding Angle: /

ρcc	80%			70%			50%			30%			10%			0
ρw	50%	30%	10%	50%	30%	10%	50%	30%	10%	50%	30%	10%	50%	30%	10%	0
ρfc	20%			20%			20%			20%			20%			0
RCR	RCR:Room Cavity Ratio						Wall Exitance Coefficients(WEC)									
0.0																
1.0	.189	.107	.034	.182	.104	.033	.169	.097	.031	.158	.091	.029	.147	.085	.027	
2.0	.181	.099	.030	.175	.096	.030	.164	.091	.028	.154	.087	.027	.145	.082	.026	
3.0	.171	.091	.027	.167	.089	.027	.157	.085	.026	.149	.082	.025	.141	.078	.024	
4.0	.162	.084	.025	.158	.083	.024	.150	.080	.024	.143	.077	.023	.136	.074	.023	
5.0	.154	.078	.023	.150	.077	.022	.143	.075	.022	.137	.072	.021	.131	.070	.021	
6.0	.146	.073	.021	.143	.072	.021	.137	.070	.020	.131	.068	.020	.126	.066	.020	
7.0	.139	.068	.019	.136	.068	.019	.130	.066	.019	.125	.064	.019	.120	.063	.018	
8.0	.132	.064	.018	.129	.064	.018	.124	.062	.018	.120	.061	.018	.116	.059	.017	
9.0	.126	.061	.017	.123	.060	.017	.119	.059	.017	.115	.058	.017	.111	.056	.016	
10.0	.120	.058	.016	.118	.057	.016	.114	.056	.016	.110	.055	.016	.107	.054	.015	

ρcc	80%			70%			50%			30%			10%			0
ρw	50%	30%	10%	50%	30%	10%	50%	30%	10%	50%	30%	10%	50%	30%	10%	0
ρfc	20%			20%			20%			20%			20%			0
RCR	RCR:Room Cavity Ratio						Ceiling Cavity Exitance Coefficients(CCEC)									
0.0	.191	.191	.191	.163	.163	.163	.111	.111	.111	.064	.064	.064	.020	.020	.020	
1.0	.172	.157	.144	.147	.135	.124	.101	.093	.086	.058	.054	.050	.019	.017	.016	
2.0	.158	.133	.112	.135	.114	.096	.093	.079	.067	.053	.046	.039	.017	.015	.013	
3.0	.146	.114	.088	.125	.098	.077	.086	.068	.054	.050	.040	.032	.016	.013	.010	
4.0	.136	.099	.071	.116	.086	.062	.080	.060	.044	.046	.035	.026	.015	.011	.008	
5.0	.127	.088	.059	.109	.076	.051	.075	.053	.036	.044	.031	.021	.014	.010	.007	
6.0	.119	.078	.049	.103	.068	.043	.071	.048	.030	.041	.028	.018	.013	.009	.006	
7.0	.113	.071	.042	.097	.061	.036	.067	.043	.026	.039	.025	.015	.013	.008	.005	
8.0	.107	.065	.036	.092	.056	.031	.064	.039	.022	.037	.023	.013	.012	.008	.004	
9.0	.102	.059	.031	.088	.052	.027	.061	.036	.019	.035	.021	.011	.011	.007	.004	
10.0	.097	.055	.027	.083	.048	.024	.058	.034	.017	.034	.020	.010	.011	.007	.003	

C Range: 0 - 360DEG
 C Interval: 22.5DEG
 Test Speed: HIGH
 Temperature: 27.1DEG
 Operators:
 Test Date: 2020-01-10

γ Range: 0 - 180DEG
 γ Interval: 0.5DEG
 Test System: EVERFINE GO-R5000_V2 SYSTEM V2.0.366
 Humidity: 24.3%
 Test Distance: 1.900m [K=0.6277]
 Remarks:

UGR(Unified Glare Rating) Table

NAME: GU10-4.5-830-35D-DIM					TYPE: /					WEIGHT: /				
SPEC.: /					DIM.: /					SERIAL No.: /				
MFR.: RAB Lighting Inc					SUR.: /					Shielding Angle: /				
ceiling/cavity	0.7	0.7	0.5	0.5	0.3	0.7	0.7	0.5	0.5	0.3				
walls	0.5	0.3	0.5	0.3	0.3	0.5	0.3	0.5	0.3	0.3				
working plane	0.2	0.2	0.2	0.2	0.2	0.2	0.2	0.2	0.2	0.2				
Room dimensions	Viewed crosswise					Viewed endwise								
x = 2H y = 2H	20.1	21.1	20.4	21.3	21.5	22.0	23.0	22.2	23.2	23.3				
3H	20.2	21.1	20.4	21.3	21.5	22.1	23.0	22.3	23.2	23.4				
4H	20.1	21.0	20.4	21.2	21.5	22.1	22.9	22.3	23.1	23.4				
6H	20.1	20.9	20.4	21.2	21.4	22.0	22.9	22.3	23.1	23.4				
8H	20.1	20.8	20.4	21.1	21.4	22.0	22.8	22.3	23.1	23.3				
12H	20.0	20.8	20.4	21.0	21.3	22.0	22.8	22.3	23.0	23.3				
4H 2H	20.3	21.2	20.6	21.4	21.6	22.0	22.8	22.3	23.1	23.3				
3H	20.4	21.1	20.7	21.4	21.7	22.1	22.8	22.4	23.1	23.4				
4H	20.4	21.1	20.8	21.4	21.7	22.1	22.8	22.5	23.1	23.4				
6H	20.4	21.0	20.8	21.3	21.7	22.2	22.8	22.5	23.1	23.4				
8H	20.4	20.9	20.8	21.3	21.6	22.2	22.7	22.6	23.1	23.4				
12H	20.3	20.8	20.7	21.2	21.6	22.2	22.7	22.6	23.0	23.4				
8H 4H	20.4	20.9	20.8	21.3	21.6	22.1	22.6	22.4	23.0	23.3				
6H	20.4	20.9	20.8	21.3	21.7	22.1	22.6	22.5	23.0	23.4				
8H	20.4	20.8	20.8	21.2	21.7	22.1	22.5	22.6	23.0	23.4				
12H	20.4	20.7	20.8	21.2	21.6	22.2	22.5	22.6	22.9	23.4				
12H 4H	20.3	20.8	20.8	21.2	21.6	22.0	22.5	22.4	22.9	23.3				
6H	20.4	20.8	20.8	21.2	21.6	22.1	22.5	22.5	22.9	23.3				
8H	20.4	20.7	20.9	21.2	21.6	22.1	22.5	22.6	22.9	23.4				
Variations with the observer position at spacings:														
S = 1.0H	+ 1.4 / - 2.4					+ 1.0 / - 1.6								
1.5H	+ 1.4 / - 1.5					+ 1.3 / - 1.5								
2.0H	+ 2.6 / - 3.8					+ 2.6 / - 3.0								

CIE Pub.117, 414.4 lm Total Lamp Luminous Flux Correct (8log(F/F0) = -3.1)

C Range: 0 - 360DEG
 C Interval: 22.5DEG
 Test Speed: HIGH
 Temperature: 27.1DEG
 Operators:
 Test Date: 2020-01-10

γ Range: 0 - 180DEG
 γ Interval: 0.5DEG
 Test System: EVERFINE GO-R5000_V2 SYSTEM V2.0.366
 Humidity: 24.3%
 Test Distance: 1.900m [K=0.6277]
 Remarks:

UTILIZATION FACTORS TABLE

NAME: GU10-4.5-830-35D-DIM	TYPE: /	WEIGHT: /
SPEC.: /	DIM.: /	SERIAL No.: /
MFR.: RAB Lighting Inc	SUR.: /	Shielding Angle: /

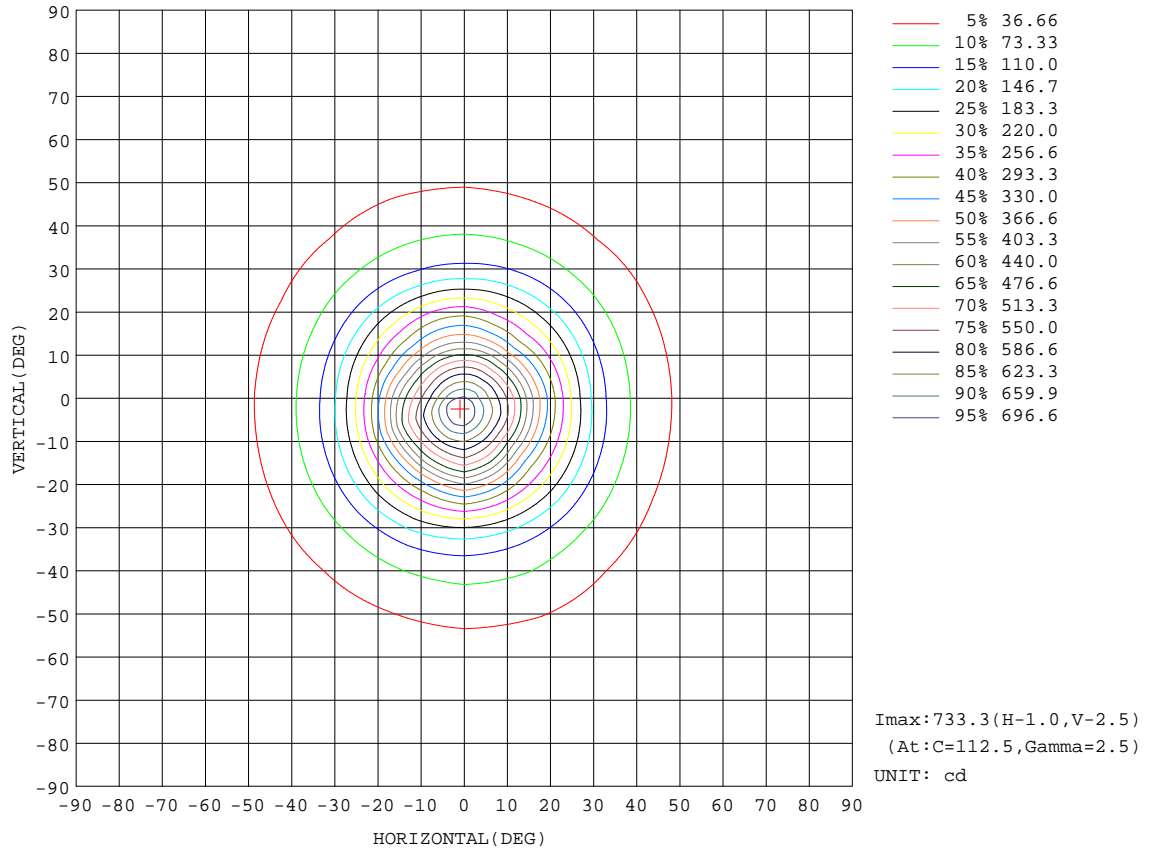
REFLECTANCE										
Ceiling	0.8	0.8	0.8	0.7	0.7	0.7	0.5	0.5	0.5	0
Walls	0.7	0.5	0.3	0.7	0.5	0.3	0.7	0.5	0.3	0
Working plane	0.2	0.2	0.2	0.2	0.2	0.2	0.2	0.2	0.2	0
ROOM INDEX	UTILIZATION FACTORS(PERCENT) $k(RI) \times RCR = 5$									
k = 0.60	81	73	69	80	73	69	79	73	69	64
0.80	89	82	78	88	82	77	87	81	77	73
1.00	95	88	84	94	88	84	92	88	83	78
1.25	100	93	89	98	93	89	96	92	88	83
1.50	103	97	93	101	96	93	99	95	92	87
2.00	106	101	98	105	100	97	102	98	95	90
2.50	108	104	100	107	103	100	103	100	98	91
3.00	110	106	103	108	105	102	105	102	100	93
4.00	113	109	107	110	108	105	107	104	103	95
5.00	114	111	109	112	109	107	108	106	104	96
ROOM INDEX	UF(total)									Direct
According to DIN EN 13032-2 2004			Suspended				SHRNOM = 1.25			

C Range: 0 - 360DEG
 C Interval: 22.5DEG
 Test Speed: HIGH
 Temperature: 27.1DEG
 Operators:
 Test Date: 2020-01-10

γ Range: 0 - 180DEG
 γ Interval: 0.5DEG
 Test System: EVERFINE GO-R5000_V2 SYSTEM V2.0.366
 Humidity: 24.3%
 Test Distance: 1.900m [K=0.6277]
 Remarks:

ISOCANDELA DIAGRAM

NAME: GU10-4.5-830-35D-DIM	TYPE: /	WEIGHT: /
SPEC.: /	DIM.: /	SERIAL No.: /
MFR.: RAB Lighting Inc	SUR.: /	Shielding Angle: /

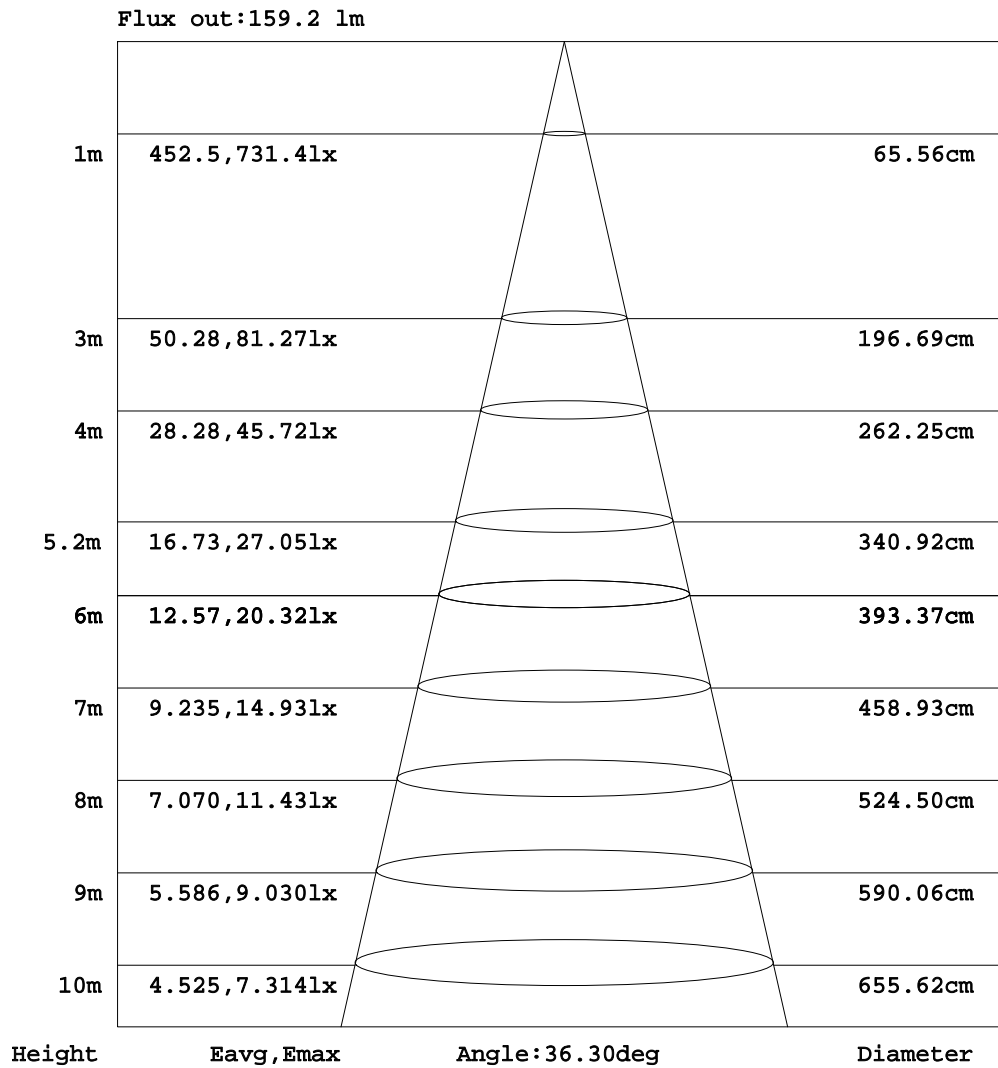


C Range: 0 - 360DEG
 C Interval: 22.5DEG
 Test Speed: HIGH
 Temperature: 27.1DEG
 Operators:
 Test Date: 2020-01-10

γ Range: 0 - 180DEG
 γ Interval: 0.5DEG
 Test System: EVERFINE GO-R5000_V2 SYSTEM V2.0.366
 Humidity: 24.3%
 Test Distance: 1.900m [K=0.6277]
 Remarks:

AAI Figure

NAME: GU10-4.5-830-35D-DIM	TYPE: /	WEIGHT: /
SPEC.: /	DIM.: /	SERIAL No.: /
MFR.: RAB Lighting Inc	SUR.: /	Shielding Angle: /



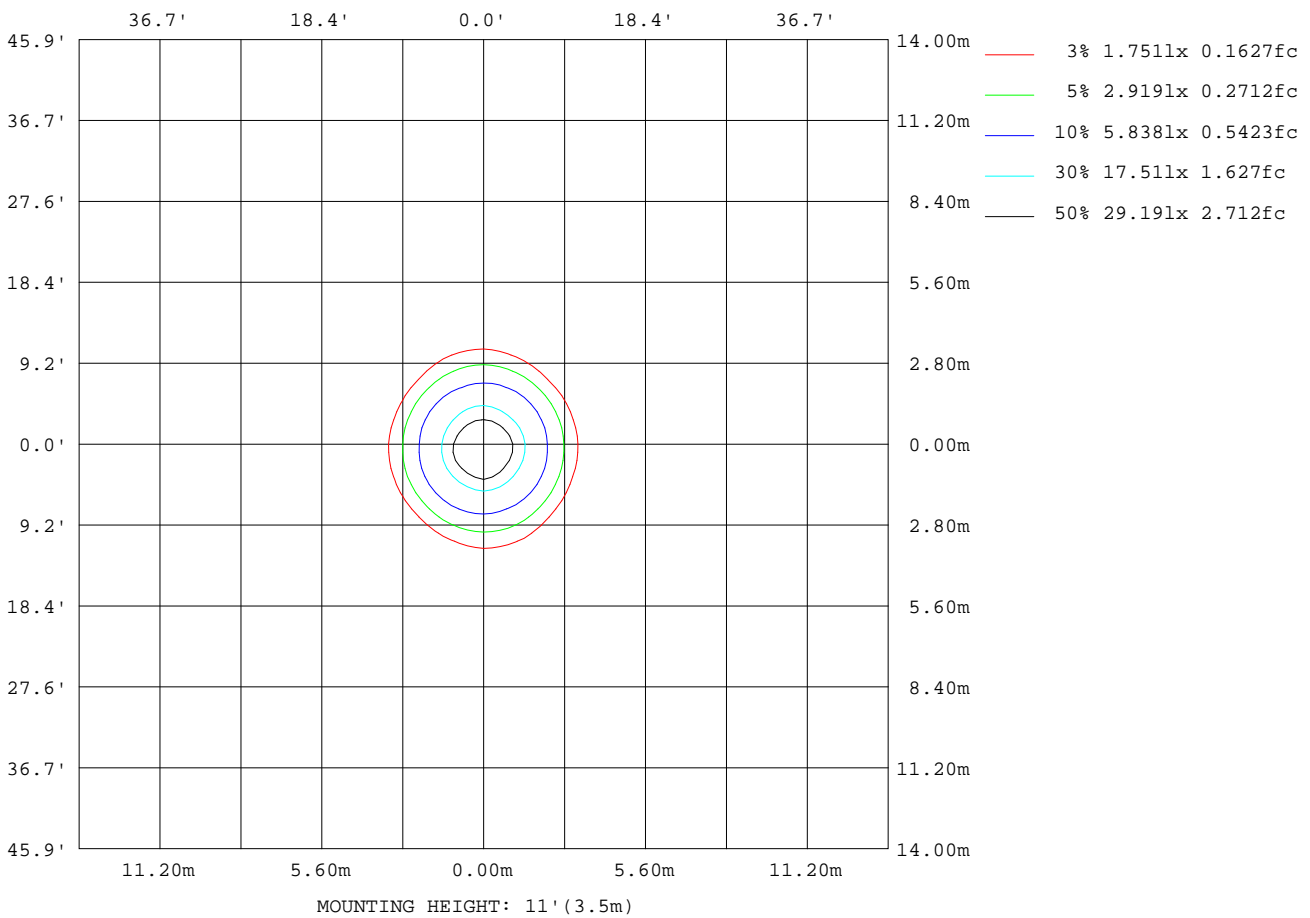
Note: The Curves indicate the illuminated area and the average illumination when the luminaire is at different distance.

C Range: 0 - 360DEG
 C Interval: 22.5DEG
 Test Speed: HIGH
 Temperature: 27.1DEG
 Operators:
 Test Date: 2020-01-10

γ Range: 0 - 180DEG
 γ Interval: 0.5DEG
 Test System: EVERFINE GO-R5000_V2 SYSTEM V2.0.366
 Humidity: 24.3%
 Test Distance: 1.900m [K=0.6277]
 Remarks:

ISOLUX DIAGRAM

NAME: GU10-4.5-830-35D-DIM	TYPE: /	WEIGHT: /
SPEC.: /	DIM.: /	SERIAL No.: /
MFR.: RAB Lighting Inc	SUR.: /	Shielding Angle: /



C Range: 0 - 360DEG
 C Interval: 22.5DEG
 Test Speed: HIGH
 Temperature: 27.1DEG
 Operators:
 Test Date: 2020-01-10

γ Range: 0 - 180DEG
 γ Interval: 0.5DEG
 Test System: EVERFINE GO-R5000_V2 SYSTEM V2.0.366
 Humidity: 24.3%
 Test Distance: 1.900m [K=0.6277]
 Remarks:

LED Avg.L Report

NAME: GU10-4.5-830-35D-DIM	TYPE: /	WEIGHT: /
SPEC.: /	DIM.: /	SERIAL No.: /
MFR.: RAB Lighting Inc	SUR.: /	Shielding Angle: /

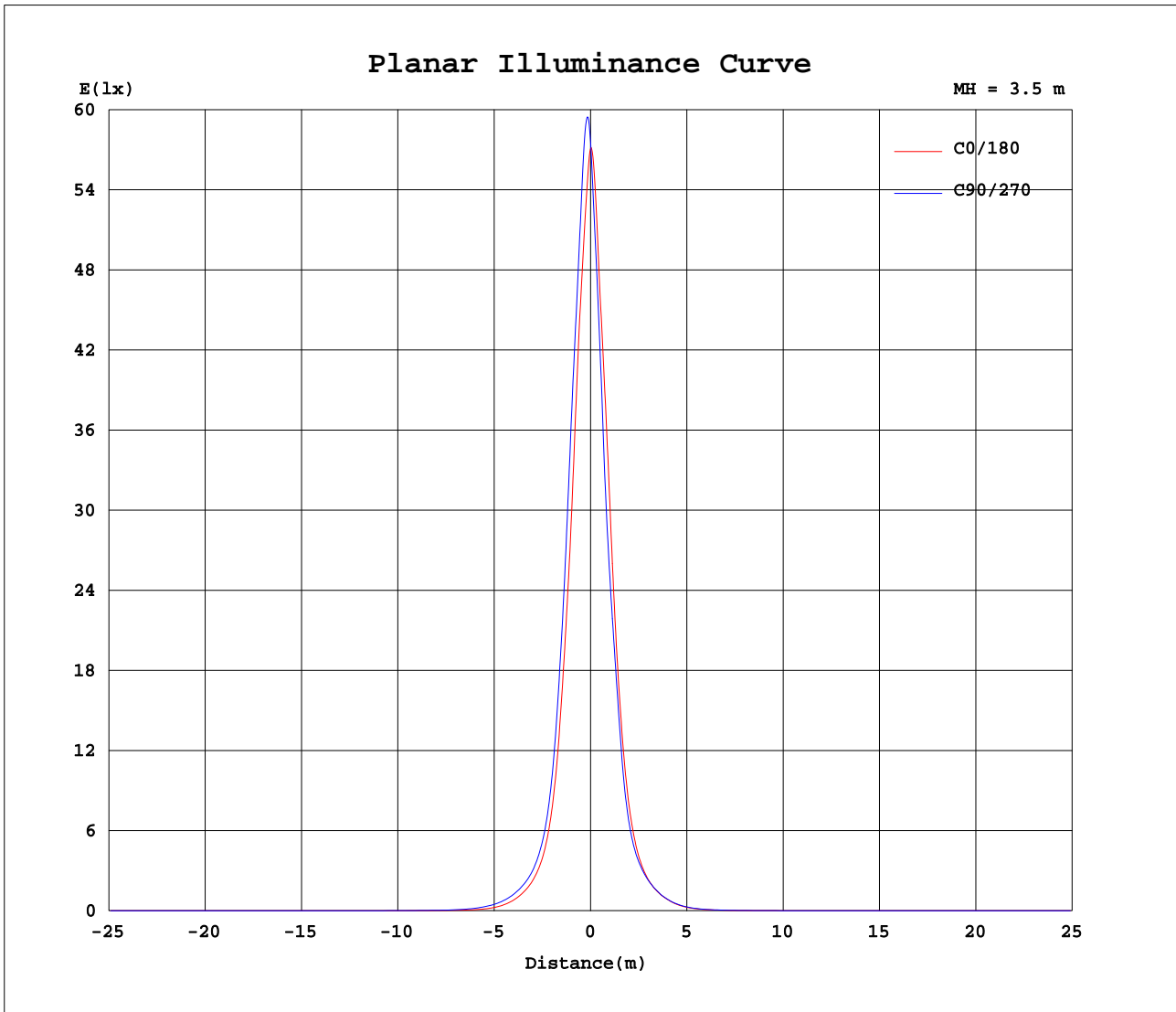
AvgL	cd/m2
L_0~180(65)av	2303
L_0~180(75)av	1762
L_0~180(85)av	976
L_90~270(65)av	3461
L_90~270(75)av	2130
L_90~270(85)av	1310
L_45(65)av	3865
L_45(75)av	2215
L_45(85)av	1250

Standard: GB/T 29293-2012

C Range: 0 - 360DEG
 C Interval: 22.5DEG
 Test Speed: HIGH
 Temperature: 27.1DEG
 Operators:
 Test Date: 2020-01-10

γ Range: 0 - 180DEG
 γ Interval: 0.5DEG
 Test System: EVERFINE GO-R5000_V2 SYSTEM V2.0.366
 Humidity: 24.3%
 Test Distance: 1.900m [K=0.6277]
 Remarks:

Planar Illuminance Curve



C Range: 0 - 360DEG
 C Interval: 22.5DEG
 Test Speed: HIGH
 Temperature: 27.1DEG
 Operators:
 Test Date: 2020-01-10

γ Range: 0 - 180DEG
 γ Interval: 0.5DEG
 Test System: EVERFINE GO-R5000_V2 SYSTEM V2.0.366
 Humidity: 24.3%
 Test Distance: 1.900m [K=0.6277]
 Remarks:

LUMINOUS DISTRIBUTION INTENSITY DATA

NAME: GU10-4.5-830-35D-DIM	TYPE: /	WEIGHT: /
SPEC.: /	DIM.: /	SERIAL No.: /
MFR.: RAB Lighting Inc	SUR.: /	Shielding Angle: /

Table--1

UNIT: cd

C(DEG) γ (DEG)	0	22.5	45	67.5	90	112.5	135	157.5	180	202.5	225	247.5	270	292.5	315	337.5			
0	699	701	703	704	706	707	708	709	699	701	703	704	706	707	708	709			
5	634	656	676	700	717	719	705	686	648	624	609	601	599	602	607	622			
10	546	571	582	603	624	621	608	591	548	515	494	483	480	483	490	514			
15	425	444	457	499	526	506	491	490	446	394	370	365	363	356	359	390			
20	315	325	333	372	401	374	358	353	322	291	277	279	278	266	266	290			
25	216	233	248	268	284	267	257	241	221	209	199	191	188	190	194	205			
30	140	155	170	178	183	185	177	160	145	138	131	123	121	124	129	134			
35	93.7	101	111	118	122	122	115	106	97.6	91.6	88.6	86.3	86.7	86.6	87.5	90.0			
40	66.3	69.8	76.2	85.4	88.1	83.8	76.3	72.0	68.1	63.9	62.3	65.2	66.0	62.9	60.9	63.2			
45	47.2	48.0	52.6	63.4	66.6	59.4	51.9	49.9	48.5	43.2	42.9	48.5	49.4	45.1	41.2	43.5			
50	30.5	32.1	36.7	46.0	48.6	41.8	36.1	34.0	32.3	29.2	29.4	32.3	33.3	30.3	28.4	28.5			
55	16.4	21.1	26.0	30.2	31.7	28.3	25.2	21.4	17.4	18.5	19.6	18.8	19.1	19.5	18.7	16.4			
60	8.14	12.6	17.1	18.0	18.0	18.9	16.4	11.8	8.43	10.6	12.2	10.8	10.1	12.2	11.5	8.99			
65	4.84	7.18	9.81	9.38	8.84	9.96	8.98	5.95	4.81	5.95	6.88	6.22	5.67	6.86	6.74	5.21			
70	3.32	4.33	5.54	5.45	5.25	5.67	5.24	3.91	3.44	3.59	4.02	3.79	3.45	3.96	3.93	3.33			
75	2.15	2.70	3.38	3.46	3.45	3.65	3.37	2.74	2.37	2.28	2.38	2.21	2.02	2.24	2.24	2.08			
80	1.12	1.48	1.92	2.04	2.13	2.22	2.05	1.68	1.38	1.22	1.16	1.00	0.88	0.95	0.99	1.01			
85	0.32	0.52	0.78	0.92	1.01	1.07	0.95	0.73	0.53	0.38	0.27	0.17	0.12	0.13	0.16	0.22			
90	0.00	0.01	0.08	0.15	0.20	0.22	0.17	0.10	0.02	0.00	0.00	0.00	0.00	0.00	0.00	0.00			
95	0.00	0.00	0.00	0.00	0.00	0.00	0.00	0.00	0.00	0.00	0.00	0.00	0.00	0.00	0.00	0.00			
100	0.00	0.00	0.00	0.00	0.00	0.00	0.00	0.00	0.00	0.00	0.00	0.00	0.00	0.00	0.00	0.00			
105	0.00	0.00	0.00	0.00	0.00	0.00	0.00	0.00	0.00	0.00	0.00	0.00	0.00	0.00	0.00	0.00			
110	0.00	0.00	0.00	0.00	0.00	0.00	0.00	0.00	0.00	0.00	0.00	0.00	0.00	0.00	0.00	0.00			
115	0.00	0.00	0.00	0.00	0.00	0.00	0.00	0.00	0.00	0.00	0.00	0.00	0.00	0.00	0.00	0.00			
120	0.00	0.00	0.00	0.00	0.00	0.00	0.00	0.00	0.00	0.00	0.00	0.00	0.00	0.00	0.00	0.00			
125	0.00	0.00	0.00	0.00	0.00	0.00	0.00	0.00	0.00	0.00	0.00	0.00	0.00	0.00	0.00	0.00			
130	0.00	0.00	0.00	0.00	0.00	0.00	0.00	0.00	0.00	0.00	0.00	0.01	0.01	0.01	0.00	0.00			
135	0.01	0.01	0.01	0.01	0.01	0.01	0.01	0.01	0.01	0.01	0.01	0.01	0.01	0.01	0.01	0.01			
140	0.01	0.01	0.01	0.01	0.01	0.01	0.01	0.01	0.01	0.01	0.01	0.01	0.02	0.02	0.02	0.01			
145	0.02	0.02	0.02	0.02	0.02	0.02	0.02	0.02	0.02	0.02	0.02	0.02	0.02	0.03	0.03	0.02			
150	0.04	0.03	0.03	0.03	0.03	0.03	0.03	0.03	0.03	0.03	0.03	0.04	0.04	0.04	0.04	0.04			
155	0.05	0.05	0.05	0.05	0.05	0.05	0.05	0.05	0.05	0.05	0.05	0.05	0.06	0.06	0.06	0.05			
160	0.07	0.07	0.07	0.07	0.06	0.06	0.07	0.07	0.07	0.07	0.07	0.08	0.08	0.08	0.08	0.08			
165	0.09	0.08	0.08	0.08	0.07	0.08	0.08	0.08	0.08	0.09	0.09	0.09	0.10	0.10	0.10	0.10			
170	0.08	0.08	0.07	0.07	0.07	0.07	0.07	0.08	0.08	0.08	0.08	0.09	0.09	0.09	0.09	0.09			
175	0.05	0.05	0.05	0.05	0.06	0.06	0.05	0.05	0.05	0.05	0.05	0.05	0.05	0.05	0.05	0.05			
180	0.00	0.00	0.00	0.00	0.00	0.00	0.00	0.00	0.00	0.00	0.00	0.00	0.00	0.00	0.00	0.00			

C Range: 0 - 360DEG
 C Interval: 22.5DEG
 Test Speed: HIGH
 Temperature: 27.1DEG
 Operators:
 Test Date: 2020-01-10

γ Range: 0 - 180DEG
 γ Interval: 0.5DEG
 Test System: EVERFINE GO-R5000_V2 SYSTEM V2.0.366
 Humidity: 24.3%
 Test Distance: 1.900m [K=0.6277]
 Remarks: