

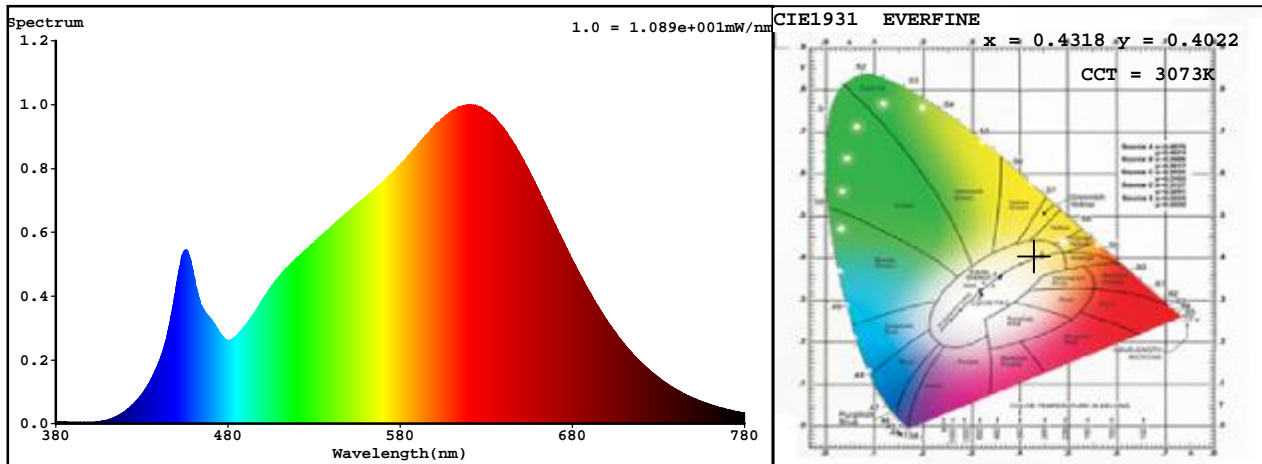
Spectrum Test Report

Sample :	Date :	2019-08-31 07:40:12
Specification : GU10-6.5-930-35D-DIM-G2	Sam. Status :	
Sample No. :	Instrument :	HaasSuite(EVERFINE)
Manufacturer : RAB Lighting Inc	Test by :	
	Assessor :	damin

Test Condition

Temperature : 27.0Deg	RH : 65.0%
WL Range : 380nm-780nm	IP : 55963 (85%)
Test Mode : Fast Test	T : 101 ms
	Sensitivity : High

Spectrum



Spectral Distribution

CIE1931 Chromaticity Diagram

Colorimetric Parameters

Chromaticity Coordinate: $x = 0.4318$ $y = 0.4022$ / $u' = 0.2481$ $v' = 0.5199$ ($duv = -1.73e-05$)

CCT= 3073K Prcp WL: $L_d = 582.5nm$ Purity=50.3%

Peak WL: $L_p = 621nm$ FWHM: =164.8nm Ratio:R=23.8% G=73.2% B=3.1%

Render Index: $R_a = 92.8$ CRI = 90.0 AvgR = 89.9

R1 =93 R2 =97 R3 =98 R4 =92 R5 =92 R6 =95 R7 =92

R8 =82 R9 =60 R10=91 R11=93 R12=81 R13=94 R14=99 R15=89

WHITE:ANSI_3000K

Photometric & Radiometric Parameters

Flux = 559.75 lm Eff. : 91.17 lm/W $F_e = 1.9333$ W

Flux of emitted photons($\mu mol/s$):9.5425 Fluo. and blue light ratio:9.318 Fluorescent eff.:265.7

Electrical parameters

V = 120.0 V I = 0.05475 A P = 6.139 W PF = 0.9341 F=59.98 Hz

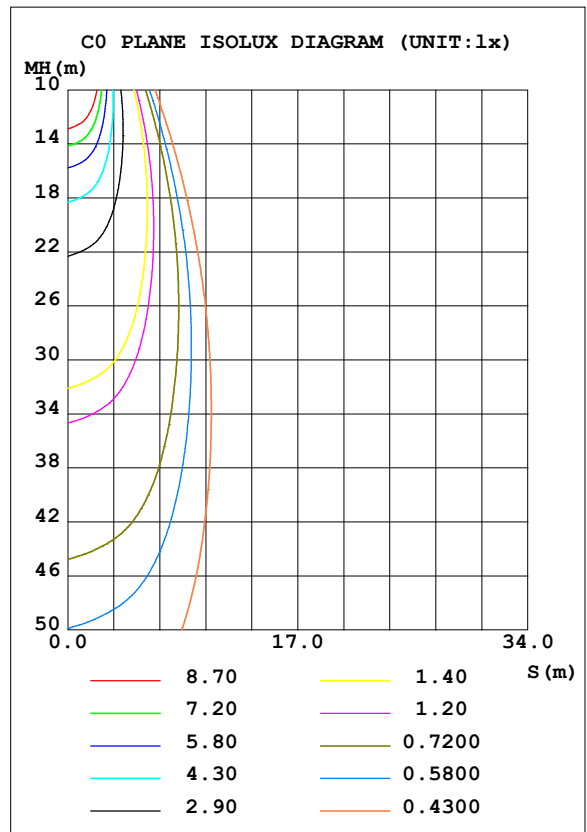
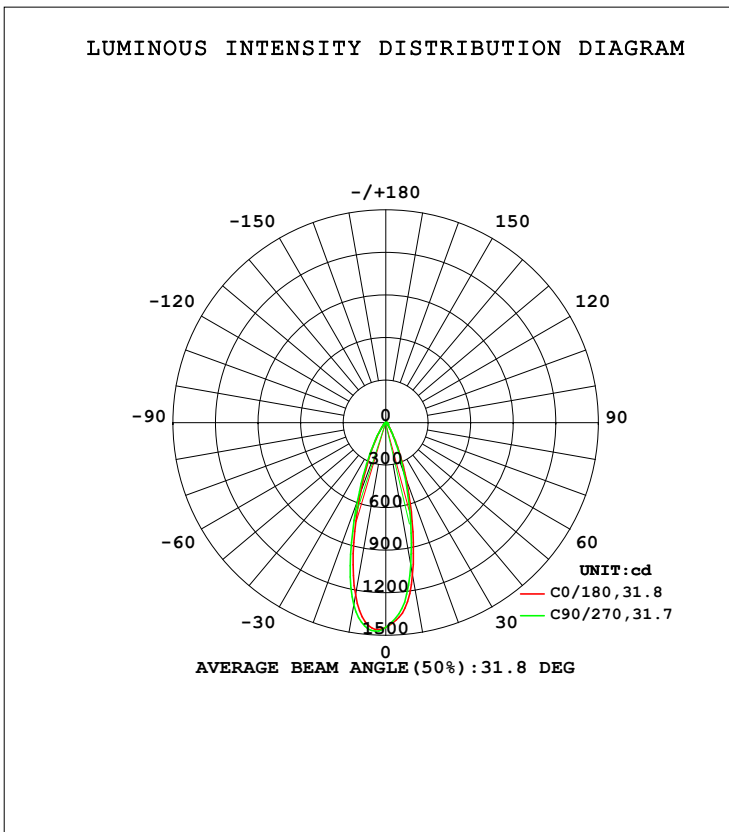
EVERFINE

<http://www.everfine.cn>

LUMINAIRE PHOTOMETRIC TEST REPORT

Test:U:120.0V I:0.0548A P:6.119W PF:0.9310 Freq:59.98Hz Lamp Flux:554.253x1 lm		
NAME: GU10-6.5-930-35D-DIM-G2	TYPE:	WEIGHT:
SPEC.:	DIM.:	SERIAL No.:
MFR.: RAB Lighting Inc	SUR.:0.0572	Shielding Angle:

DATA OF LAMP		PHOTOMETRIC DATA			
MODEL	GU10	Imax (cd)	1473	S/MH (C0/180)	0.56
NOMINAL POWER (W)		LOR (%)	100.0	S/MH (C90/270)	0.58
RATED VOLTAGE (V)	120	TOTAL FLUX (lm)	554.25	η UP, DN (C0-180)	0.0, 43.5
NOMINAL FLUX (lm)	554.253	CIE CLASS	DIRECT	η UP, DN (C180-360)	0.0, 56.5
LAMPS INSIDE	1	η up (%)	0.0	CIBSE SHR NOM	0.50
TEST VOLTAGE (V)	120	η down (%)	100.0	CIBSE SHR MAX	0.55



C Range: 0 - 360DEG
 C Interval: 90.0DEG
 Test Speed: HIGH
 Temperature: 25.3DEG
 Operators: Testing Room
 Test Date: 2019-08-31

γ Range: 0 - 90DEG
 γ Interval: 1.0DEG
 Test System: EVERFINE GO-3000H_V1 SYSTEM V2.0.361
 Humidity: 65.0%
 Test Distance: 11.160m [K=1.0000]
 Remarks:

ZONAL FLUX DIAGRAM

ZONAL FLUX DIAGRAM:

γ	C0	C90	C180	C270				γ	Φ zone	Φ total	%lum, lamp
10	1090	1021	1234	1305				0- 10	125.4	125.4	22.6,22.6
20	424.2	382.3	525.5	583.9				10- 20	219.3	344.7	62.2,62.2
30	108.1	100.5	152.9	166.6				20- 30	122.1	466.8	84.2,84.2
40	30.74	30.33	42.63	45.20				30- 40	44.97	511.8	92.3,92.3
50	15.76	15.54	16.97	17.98				40- 50	18.77	530.6	95.7,95.7
60	9.011	8.597	9.749	10.10				50- 60	11.16	541.7	97.7,97.7
70	5.298	4.944	5.783	6.134				60- 70	7.257	549.0	99.1,99.1
80	2.261	1.893	2.483	2.852				70- 80	4.140	553.1	99.8,99.8
90	0.0710	0.0631	0.1184	0.2131				80- 90	1.123	554.3	100,100
100								90-100			
110								100-110			
120								110-120			
130								120-130			
140								130-140			
150								140-150			
160								150-160			
170								160-170			
180								170-180			
DEG	LUMINOUS INTENSITY:cd								UNIT:lm		

Conical surface Flux(90deg): 522.66 lm

%lum = 94.3%

%lamp = 94.3%

Conical surface Flux(120deg): 541.73 lm

%lum = 97.7%

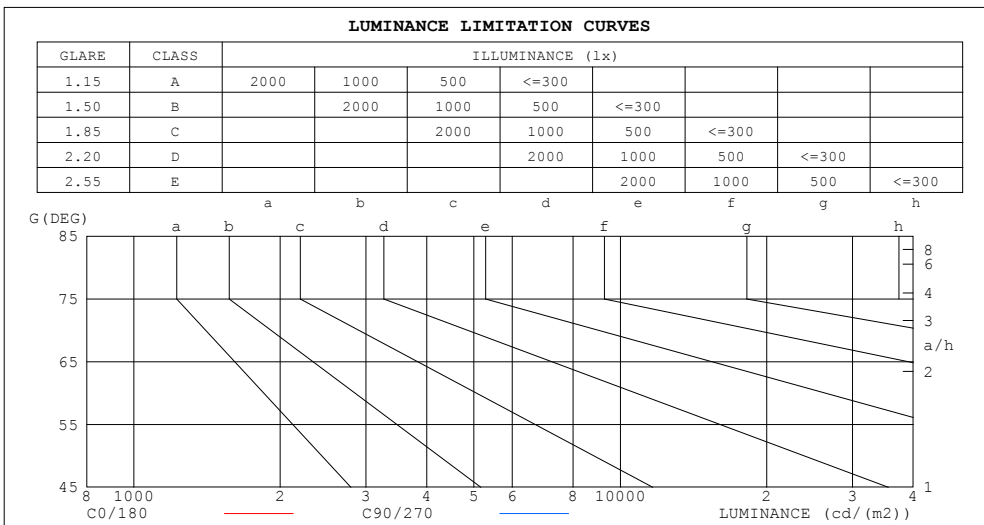
%lamp = 97.7%

C Range: 0 - 360DEG
 C Interval: 90.0DEG
 Test Speed: HIGH
 Temperature:25.3DEG
 Operators:Testing Room
 Test Date:2019-08-31

γ Range: 0 - 90DEG
 γ Interval: 1.0DEG
 Test System:EVERFINE GO-3000H_V1 SYSTEM V2.0.361
 Humidity:65.0%
 Test Distance:11.160m [K=1.0000]
 Remarks:

LUMINANCE LIMITATION CURVES

Test:U:120.0V I:0.0548A P:6.119W PF:0.9310 Freq:59.98Hz Lamp Flux:554.253x1 lm		
NAME: GU10-6.5-930-35D-DIM-G2	TYPE:	WEIGHT:
SPEC.:	DIM.:	SERIAL No.:
MFR.: RAB Lighting Inc	SUR.:0.0572	Shielding Angle:



LUMINANCE cd/(m2)		
G (DEG)	C0/180	C90/270
85	176	103
80	228	191
75	252	227
70	271	253
65	288	275
60	315	301
55	366	348
50	429	423
45	520	513

C Range: 0 - 360DEG
 C Interval: 90.0DEG
 Test Speed: HIGH
 Temperature:25.3DEG
 Operators:Testing Room
 Test Date:2019-08-31

γ Range: 0 - 90DEG
 γ Interval: 1.0DEG
 Test System:EVERFINE GO-3000H_V1 SYSTEM V2.0.361
 Humidity:65.0%
 Test Distance:11.160m [K=1.0000]
 Remarks:

WEC AND CCEC

Test:U:120.0V I:0.0548A P:6.119W PF:0.9310 Freq:59.98Hz Lamp Flux:554.253x1 lm		
NAME: GU10-6.5-930-35D-DIM-G2	TYPE:	WEIGHT:
SPEC.:	DIM.:	SERIAL No.:
MFR.: RAB Lighting Inc	SUR.:0.0572	Shielding Angle:

ρcc	80%			70%			50%			30%			10%			0
ρw	50%	30%	10%	50%	30%	10%	50%	30%	10%	50%	30%	10%	50%	30%	10%	0
ρfc	20%			20%			20%			20%			20%			0
RCR	RCR:Room Cavity Ratio						Wall Exitance Coefficients (WEC)									
0.0																
1.0	.165	.094	.030	.158	.090	.029	.146	.084	.027	.134	.077	.025	.124	.072	.023	
2.0	.155	.085	.026	.149	.082	.025	.139	.077	.024	.129	.072	.023	.120	.068	.021	
3.0	.145	.077	.023	.140	.075	.023	.132	.071	.022	.123	.068	.021	.116	.064	.020	
4.0	.136	.071	.021	.132	.069	.020	.125	.066	.020	.118	.063	.019	.111	.061	.018	
5.0	.129	.066	.019	.125	.064	.019	.119	.062	.018	.113	.059	.018	.107	.057	.017	
6.0	.122	.061	.017	.119	.060	.017	.113	.058	.017	.108	.056	.016	.103	.054	.016	
7.0	.116	.057	.016	.113	.056	.016	.108	.055	.016	.103	.053	.015	.099	.051	.015	
8.0	.110	.054	.015	.108	.053	.015	.103	.052	.015	.099	.050	.015	.095	.049	.014	
9.0	.105	.051	.014	.103	.050	.014	.099	.049	.014	.096	.048	.014	.092	.047	.014	
10.0	.101	.048	.013	.099	.048	.013	.095	.047	.013	.092	.046	.013	.089	.045	.013	

ρcc	80%			70%			50%			30%			10%			0
ρw	50%	30%	10%	50%	30%	10%	50%	30%	10%	50%	30%	10%	50%	30%	10%	0
ρfc	20%			20%			20%			20%			20%			0
RCR	RCR:Room Cavity Ratio						Ceiling Cavity Exitance Coefficients (CCEC)									
0.0	.190	.190	.190	.163	.163	.163	.111	.111	.111	.064	.064	.064	.020	.020	.020	
1.0	.170	.157	.146	.146	.135	.125	.100	.093	.087	.057	.054	.050	.018	.017	.016	
2.0	.154	.133	.115	.132	.114	.099	.090	.079	.069	.052	.046	.040	.017	.015	.013	
3.0	.140	.113	.092	.120	.098	.080	.083	.068	.056	.048	.040	.033	.015	.013	.011	
4.0	.129	.098	.075	.111	.085	.065	.076	.059	.046	.044	.035	.027	.014	.011	.009	
5.0	.119	.087	.062	.103	.075	.054	.071	.052	.038	.041	.031	.023	.013	.010	.007	
6.0	.111	.077	.052	.096	.067	.046	.066	.047	.032	.038	.027	.019	.012	.009	.006	
7.0	.104	.069	.045	.089	.060	.039	.062	.042	.028	.036	.025	.016	.012	.008	.005	
8.0	.098	.063	.038	.084	.054	.033	.058	.038	.024	.034	.022	.014	.011	.007	.005	
9.0	.092	.057	.033	.080	.050	.029	.055	.035	.021	.032	.021	.012	.010	.007	.004	
10.0	.088	.053	.029	.075	.046	.026	.052	.032	.018	.031	.019	.011	.010	.006	.004	

C Range: 0 - 360DEG
 C Interval: 90.0DEG
 Test Speed: HIGH
 Temperature:25.3DEG
 Operators:Testing Room
 Test Date:2019-08-31

γ Range: 0 - 90DEG
 γ Interval: 1.0DEG
 Test System:EVERFINE GO-3000H_V1 SYSTEM V2.0.361
 Humidity:65.0%
 Test Distance:11.160m [K=1.0000]
 Remarks:

UGR(Unified Glare Rating) Table

Test:U:120.0V I:0.0548A P:6.119W PF:0.9310 Freq:59.98Hz Lamp Flux:554.253x1 lm										
NAME: GU10-6.5-930-35D-DIM-G2					TYPE:			WEIGHT:		
SPEC.:					DIM.:			SERIAL No.:		
MFR.: RAB Lighting Inc					SUR.:0.0572			Shielding Angle:		
ceiling/cavity	0.7	0.7	0.5	0.5	0.3	0.7	0.7	0.5	0.5	0.3
walls	0.5	0.3	0.5	0.3	0.3	0.5	0.3	0.5	0.3	0.3
working plane	0.2	0.2	0.2	0.2	0.2	0.2	0.2	0.2	0.2	0.2
Room dimensions	Viewed crosswise					Viewed endwise				
x = 2H y = 2H	5.5	6.3	5.7	6.4	6.6	5.3	6.1	5.5	6.3	6.4
3H	6.2	7.0	6.5	7.2	7.4	6.0	6.8	6.3	7.0	7.2
4H	6.6	7.3	6.9	7.5	7.7	6.4	7.1	6.6	7.3	7.5
6H	6.9	7.6	7.2	7.8	8.0	6.6	7.3	6.9	7.5	7.7
8H	7.0	7.6	7.3	7.9	8.1	6.6	7.3	6.9	7.5	7.8
12H	7.0	7.6	7.3	7.9	8.2	6.6	7.3	6.9	7.5	7.8
4H 2H	5.7	6.4	6.0	6.6	6.9	5.6	6.3	5.9	6.5	6.7
3H	6.7	7.3	7.0	7.6	7.9	6.5	7.2	6.8	7.4	7.7
4H	7.2	7.7	7.5	8.0	8.3	7.0	7.5	7.3	7.8	8.1
6H	7.6	8.1	7.9	8.4	8.7	7.3	7.8	7.7	8.1	8.5
8H	7.7	8.2	8.1	8.5	8.9	7.4	7.8	7.7	8.2	8.5
12H	7.7	8.2	8.2	8.5	8.9	7.4	7.8	7.8	8.2	8.6
8H 4H	7.3	7.8	7.7	8.1	8.5	7.1	7.6	7.5	7.9	8.3
6H	7.8	8.2	8.2	8.6	9.0	7.5	7.9	8.0	8.3	8.7
8H	8.0	8.3	8.4	8.7	9.2	7.6	8.0	8.1	8.4	8.9
12H	8.1	8.4	8.5	8.8	9.3	7.7	8.0	8.2	8.4	8.9
12H 4H	7.3	7.7	7.7	8.1	8.5	7.1	7.5	7.5	7.9	8.3
6H	7.8	8.1	8.2	8.6	9.0	7.5	7.9	8.0	8.3	8.7
8H	8.0	8.3	8.5	8.7	9.2	7.7	8.0	8.2	8.4	8.9
Variations with the observer position at spacings:										
S = 1.0H	+ 0.5 / - 0.6					+ 0.6 / - 0.7				
1.5H	+ 0.9 / - 0.4					+ 0.9 / - 0.5				
2.0H	+ 0.8 / - 0.6					+ 0.9 / - 0.7				

CIE Pub.117, 554.3 lm Total Lamp Luminous Flux Correct (8log(F/F0) = -2.1)

C Range: 0 - 360DEG
 C Interval: 90.0DEG
 Test Speed: HIGH
 Temperature:25.3DEG
 Operators:Testing Room
 Test Date:2019-08-31

γ Range: 0 - 90DEG
 γ Interval: 1.0DEG
 Test System:EVERFINE GO-3000H_V1 SYSTEM V2.0.361
 Humidity:65.0%
 Test Distance:11.160m [K=1.0000]
 Remarks:

UTILIZATION FACTORS TABLE

Test:U:120.0V I:0.0548A P:6.119W PF:0.9310 Freq:59.98Hz Lamp Flux:554.253x1 lm		
NAME: GU10-6.5-930-35D-DIM-G2	TYPE:	WEIGHT:
SPEC.:	DIM.:	SERIAL No.:
MFR.: RAB Lighting Inc	SUR.:0.0572	Shielding Angle:

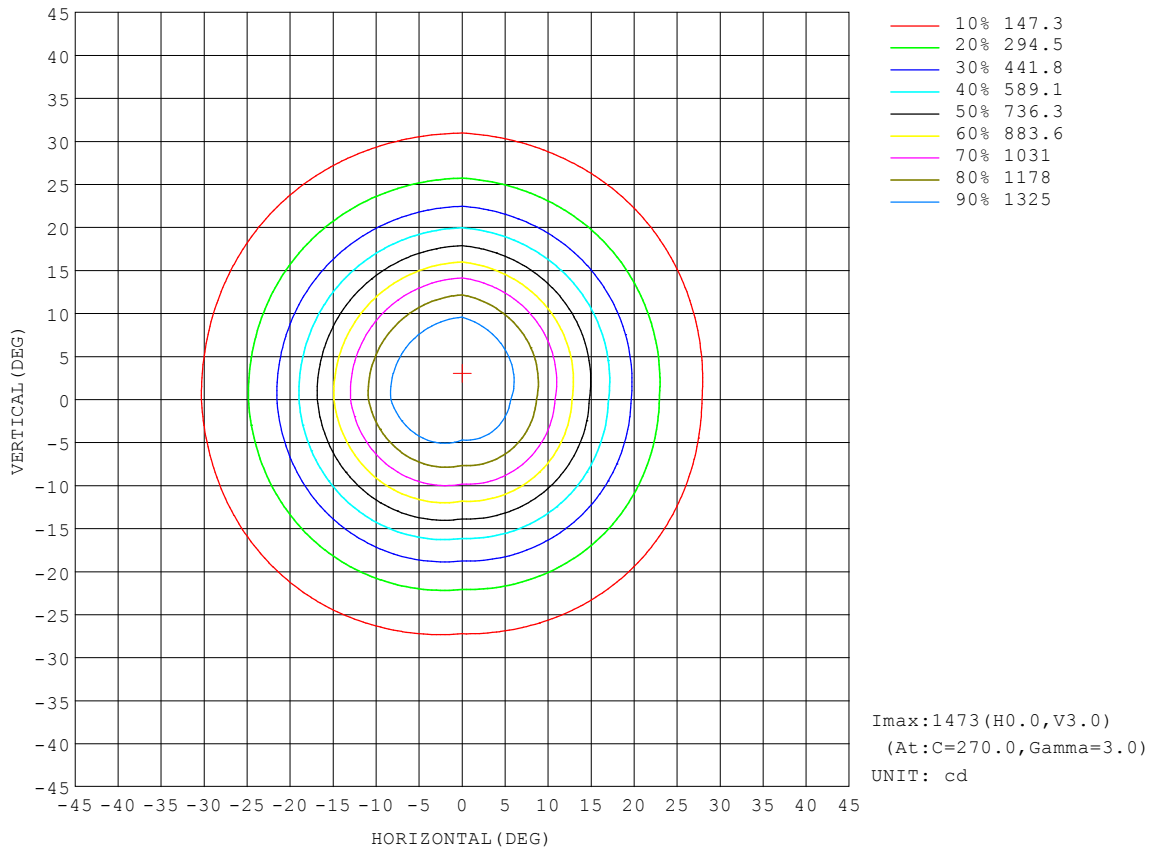
REFLECTANCE										
Ceiling	0.8	0.8	0.8	0.7	0.7	0.7	0.5	0.5	0.5	0
Walls	0.7	0.5	0.3	0.7	0.5	0.3	0.7	0.5	0.3	0
Working plane	0.2	0.2	0.2	0.2	0.2	0.2	0.2	0.2	0.2	0
ROOM INDEX	UTILIZATION FACTORS (PERCENT) $k(RI) \times RCR = 5$									
k = 0.60	87	80	77	86	80	76	86	80	76	73
0.80	94	88	84	94	88	84	92	87	84	80
1.00	99	93	89	98	92	89	96	92	88	84
1.25	103	97	94	102	97	93	100	96	93	88
1.50	105	100	97	104	100	97	102	98	95	91
2.00	108	104	101	107	103	100	104	101	98	93
2.50	110	106	103	108	105	102	105	102	100	94
3.00	111	108	105	110	106	104	106	104	102	95
4.00	114	111	108	111	109	107	108	106	104	97
5.00	115	113	111	113	111	109	109	107	106	98
ROOM INDEX	UF(total)									Direct
According to DIN EN 13032-2 2004			Suspended				SHRNOM = 1.25			

C Range: 0 - 360DEG
 C Interval: 90.0DEG
 Test Speed: HIGH
 Temperature:25.3DEG
 Operators:Testing Room
 Test Date:2019-08-31

γ Range: 0 - 90DEG
 γ Interval: 1.0DEG
 Test System:EVERFINE GO-3000H_V1 SYSTEM V2.0.361
 Humidity:65.0%
 Test Distance:11.160m [K=1.0000]
 Remarks:

ISOCANDELA DIAGRAM

Test:U:120.0V I:0.0548A P:6.119W PF:0.9310 Freq:59.98Hz Lamp Flux:554.253x1 lm		
NAME: GU10-6.5-930-35D-DIM-G2	TYPE:	WEIGHT:
SPEC.:	DIM.:	SERIAL No.:
MFR.: RAB Lighting Inc	SUR.:0.0572	Shielding Angle:

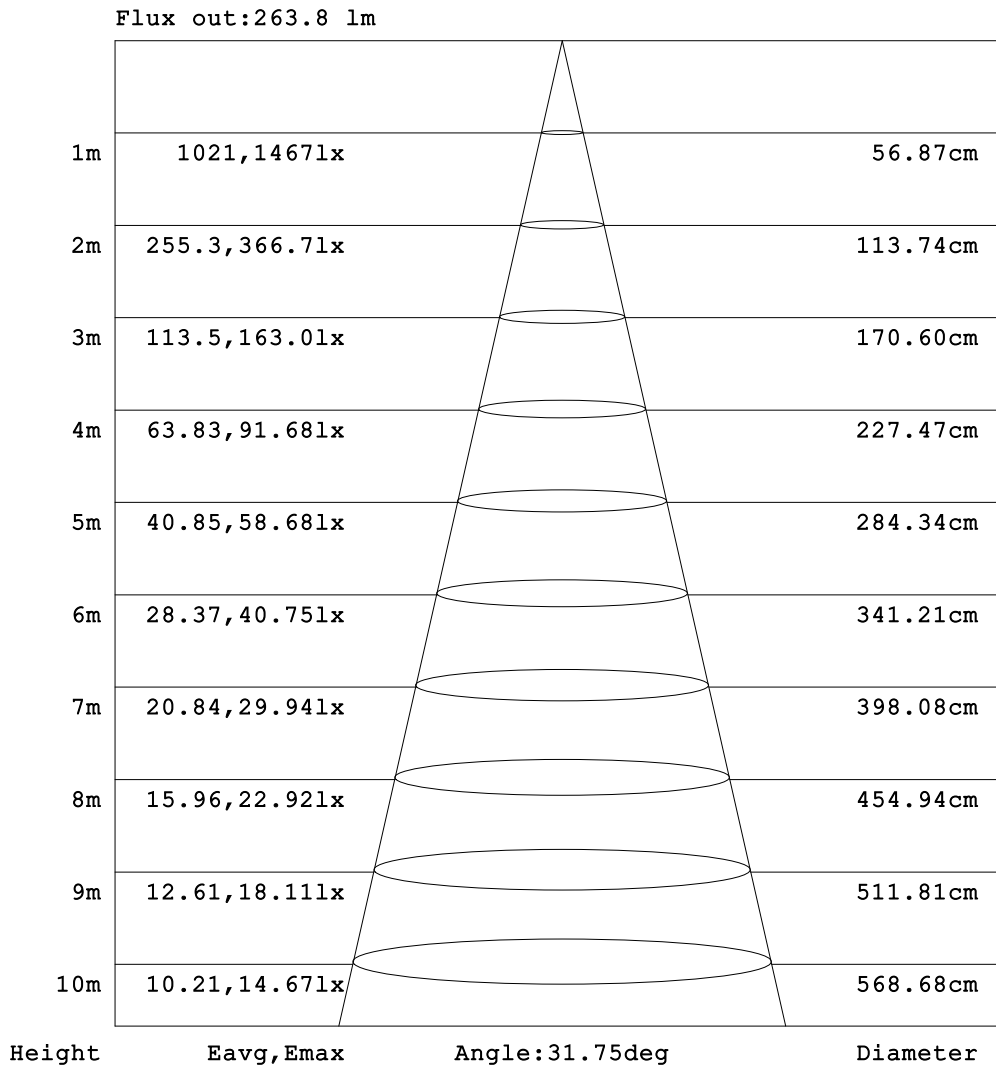


C Range: 0 - 360DEG
 C Interval: 90.0DEG
 Test Speed: HIGH
 Temperature:25.3DEG
 Operators:Testing Room
 Test Date:2019-08-31

γ Range: 0 - 90DEG
 γ Interval: 1.0DEG
 Test System:EVERFINE GO-3000H_V1 SYSTEM V2.0.361
 Humidity:65.0%
 Test Distance:11.160m [K=1.0000]
 Remarks:

AAI Figure

Test:U:120.0V I:0.0548A P:6.119W PF:0.9310 Freq:59.98Hz Lamp Flux:554.253x1 lm		
NAME: GU10-6.5-930-35D-DIM-G2	TYPE:	WEIGHT:
SPEC.:	DIM.:	SERIAL No.:
MFR.: RAB Lighting Inc	SUR.:0.0572	Shielding Angle:

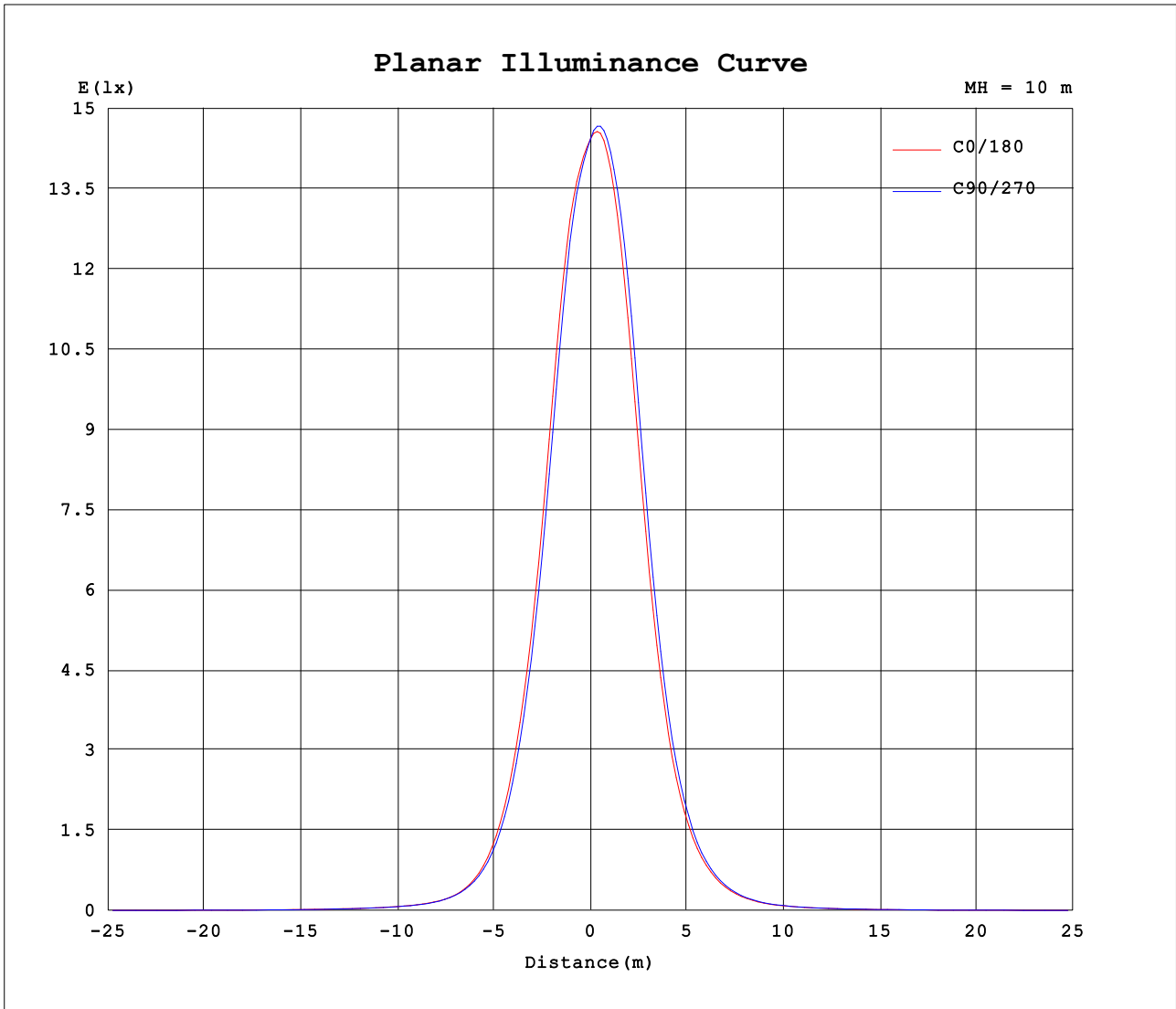


Note: The Curves indicate the illuminated area and the average illumination when the luminaire is at different distance.

C Range: 0 - 360DEG
 C Interval: 90.0DEG
 Test Speed: HIGH
 Temperature:25.3DEG
 Operators:Testing Room
 Test Date:2019-08-31

γ Range: 0 - 90DEG
 γ Interval: 1.0DEG
 Test System:EVERFINE GO-3000H_V1 SYSTEM V2.0.361
 Humidity:65.0%
 Test Distance:11.160m [K=1.0000]
 Remarks:

Planar Illuminance Curve



C Range: 0 - 360DEG
 C Interval: 90.0DEG
 Test Speed: HIGH
 Temperature: 25.3DEG
 Operators: Testing Room
 Test Date: 2019-08-31

γ Range: 0 - 90DEG
 γ Interval: 1.0DEG
 Test System: EVERFINE GO-3000H_V1 SYSTEM V2.0.361
 Humidity: 65.0%
 Test Distance: 11.160m [K=1.0000]
 Remarks:

