

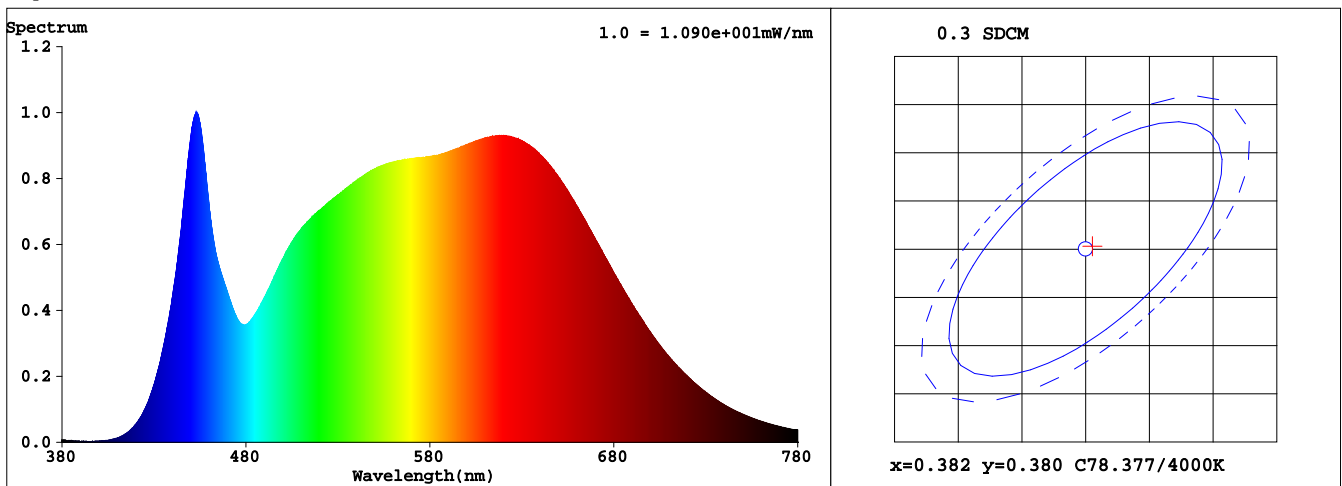
Spectrum Test Report

Sample : Date : 2017-04-14 03:05:40
Specification : Standardtus :
Sample No. : MR16-8-940-35D-DIM Instrument : HaasSuite(EVERFINE)
Manufacturer : RAB Lighting Inc Test by :
Remark :

Test Condition

Temperature : 24.2Deg RH : 30.1%
WL Range : 380nm-780nm IP : 52231 (80%)
Test Mode : Fast Test T : 253 ms
Sensitivity : High

Spectrum



Colorimetric Parameters

Chromaticity Coordinate: $x = 0.3823$ $y = 0.3799$ / $u' = 0.2251$ $v' = 0.5032$ ($duv=9.14e-04$)

CCT= 3973K Prcp WL: $L_d=578.7nm$ Purity=28.7%

Peak WL: $L_p=453nm$ FWHM: =25.6nm Ratio:R=21.1% G=75.3% B=3.6%

Render Index: $R_a = 92.9$ TM30:Rf=91 Rg=99

R1 =93 R2 =95 R3 =95 R4 =93 R5 =92 R6 =92 R7 =96

R8 =89 R9 =70 R10=86 R11=93 R12=72 R13=93 R14=97 R15=91

LEVEL:OUT WHITE:ANSI_4000K

Photometric & Radiometric Parameters

Flux = 634.97 lm Eff. : 80.17 lm/W $F_e = 2.1996 W$

Flux of emitted photons($\mu mol/s$):10.604 Fluo. and blue light ratio:5.842 Fluorescent eff.:217.5

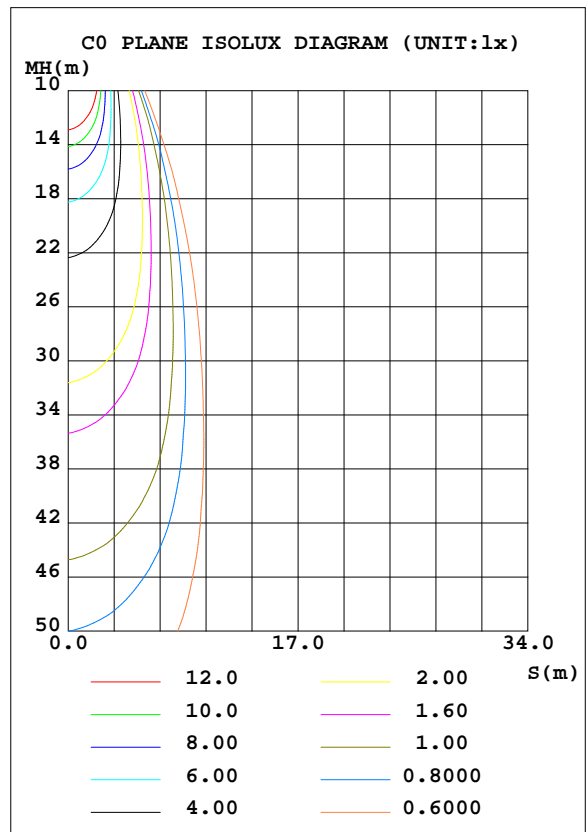
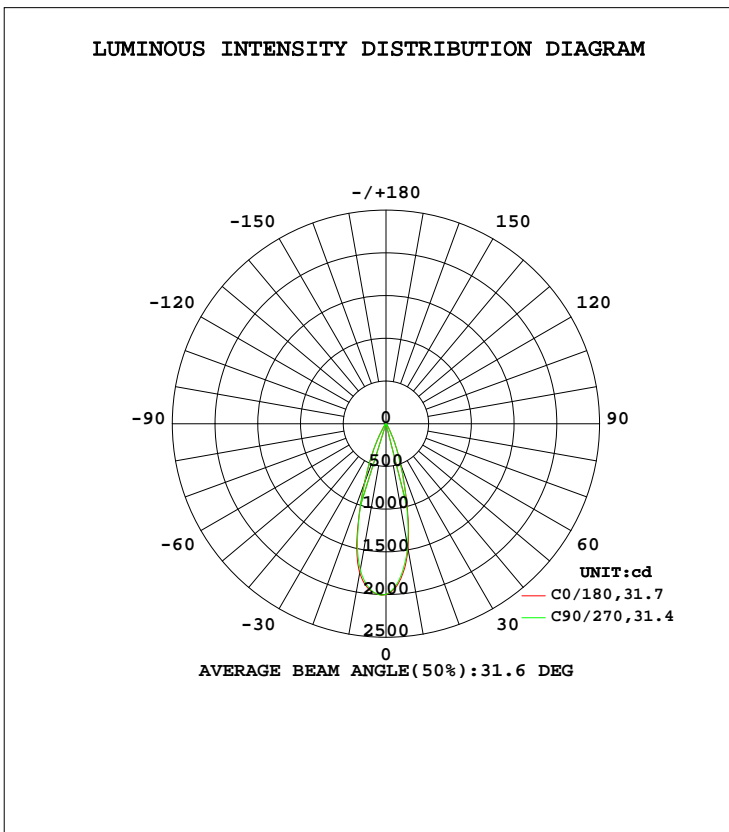
Electrical parameters

V = 12.04 V I = 0.7173 A P = 7.920 W PF = 0.9171

LUMINAIRE PHOTOMETRIC TEST REPORT

Test:U:12.00V I:0.7219A P:7.940W PF:0.9166 Freq:50.00Hz Lamp Flux:677.619x1 lm		
NAME: MR16-8-940-35D-DIM	TYPE:	WEIGHT:
SPEC.:	DIM.:	SERIAL No.:
MFR.: RAB Lighting Inc	SUR.:	Shielding Angle:

DATA OF LAMP		PHOTOMETRIC DATA Eff: 85.34 lm/W			
MODEL		I _{max} (cd)	2017	S/MH(C0/180)	0.55
NOMINAL POWER(W)		LOR(%)	100.0	S/MH(C90/270)	0.55
RATED VOLTAGE(V)	12	TOTAL FLUX(lm)	677.62	η UP, DN(C0-180)	0.1,44.0
NOMINAL FLUX(lm)	677.619	CIE CLASS	DIRECT	η UP, DN(C180-360)	0.1,55.8
LAMPS INSIDE	1	η up(%)	0.3	CIBSE SHR NOM	0.50
TEST VOLTAGE(V)	12	η down(%)	99.7	CIBSE SHR MAX	0.55



C Range: 0 - 360DEG
 C Interval: 22.5DEG
 Test Speed: HIGH
 Temperature:25.2DEG
 Operators:
 Test Date:2017-04-13

γ Range: 0 - 180DEG
 γ Interval: 0.5DEG
 Test System:EVERFINE GO-R5000_V2 SYSTEM V2.0.292
 Humidity:29.6%
 Test Distance:1.197m [K=1.0000]
 Remarks:

ZONAL FLUX DIAGRAM

ZONAL FLUX DIAGRAM:

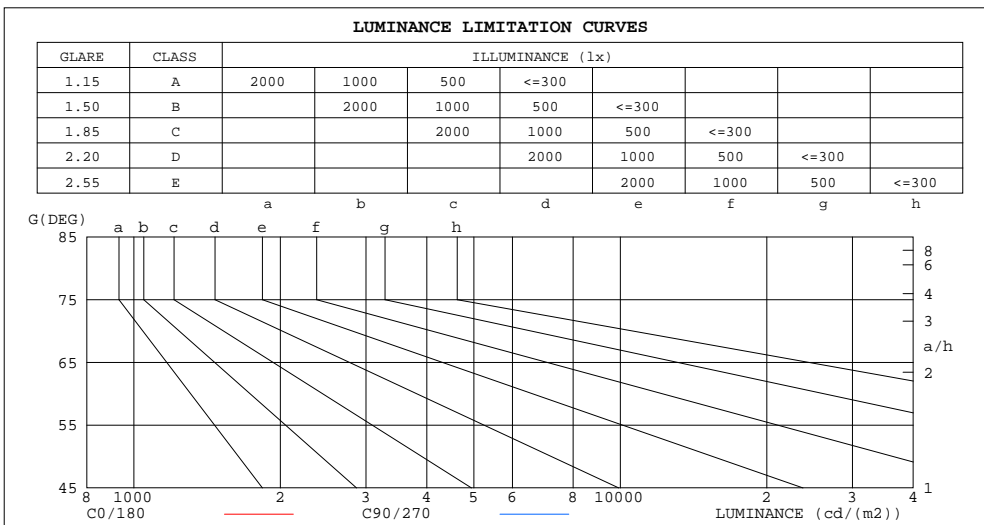
γ	C0	C45	C90	C135	C180	C225	C270	C315	γ	Φ zone	Φ total	lum, lamp
10	1487	1420	1457	1591	1771	1845	1736	1604	0- 10	172.4	172.4	25.4,25.4
20	497.4	460.9	486.8	586.6	739.8	814.8	732.6	604.9	10- 20	298.2	470.5	69.4,69.4
30	82.10	71.95	75.23	95.87	143.4	168.9	149.4	113.2	20- 30	141.7	612.2	90.4,90.4
40	18.53	17.05	17.12	19.80	29.96	34.39	28.38	23.19	30- 40	32.51	644.7	95.1,95.1
50	9.485	9.552	9.826	10.79	12.80	12.71	11.51	10.40	40- 50	11.79	656.5	96.9,96.9
60	7.011	7.119	7.209	7.564	9.012	8.865	8.114	7.663	50- 60	8.212	664.8	98.1,98.1
70	4.465	4.436	4.547	4.787	5.683	5.580	5.244	4.828	60- 70	6.344	671.1	99,99
80	1.889	1.841	1.856	2.027	2.443	2.486	2.347	2.107	70- 80	3.694	674.8	99.6,99.6
90	0.0899	0.0722	0.0628	0.0643	0.1528	0.2087	0.1900	0.1091	80- 90	1.065	675.9	99.7,99.7
100	0.0918	0.0869	0.0841	0.0790	0.0806	0.0811	0.0861	0.0883	90-100	0.0827	675.9	99.8,99.8
110	0.1284	0.1264	0.1208	0.1174	0.1148	0.1192	0.1208	0.1273	100-110	0.1076	676.0	99.8,99.8
120	0.1954	0.1899	0.1882	0.1903	0.1811	0.1837	0.1870	0.1892	110-120	0.1485	676.2	99.8,99.8
130	0.3042	0.3089	0.3050	0.3116	0.2879	0.3189	0.2746	0.2905	120-130	0.2103	676.4	99.8,99.8
140	0.3079	0.3014	0.3178	0.2998	0.2805	0.2949	0.2921	0.2997	130-140	0.7892	677.2	99.9,99.9
150	0.3066	0.3105	0.2984	0.2791	0.2828	0.2751	0.2847	0.2975	140-150	0.1795	677.4	100,100
160	0.3343	0.3534	0.3344	0.3095	0.3001	0.3001	0.3156	0.3310	150-160	0.1405	677.5	100,100
170	0.2541	0.2523	0.2418	0.2572	0.2806	0.2795	0.2889	0.2704	160-170	0.0921	677.6	100,100
180	0	0	0	0	0	0	0	0	170-180	0.0163	677.6	100,100
DEG	LUMINOUS INTENSITY:cd									UNIT:lm		

C Range: 0 - 360DEG
 C Interval: 22.5DEG
 Test Speed: HIGH
 Temperature:25.2DEG
 Operators:
 Test Date:2017-04-13

γ Range: 0 - 180DEG
 γ Interval: 0.5DEG
 Test System:EVERFINE GO-R5000_V2 SYSTEM V2.0.292
 Humidity:29.6%
 Test Distance:1.197m [K=1.0000]
 Remarks:

LUMINANCE LIMITATION CURVES

Test:U:12.00V I:0.7219A P:7.940W PF:0.9166 Freq:50.00Hz Lamp Flux:677.619x1 lm		
NAME: MR16-8-940-35D-DIM	TYPE:	WEIGHT:
SPEC.:	DIM.:	SERIAL No.:
MFR.: RAB Lighting Inc	SUR.:	Shielding Angle:



LUMINANCE cd/(m2)		
G (DEG)	C0/180	C90/270
85	9	8
80	11	11
75	12	12
70	13	13
65	14	14
60	14	14
55	14	14
50	15	15
45	18	18

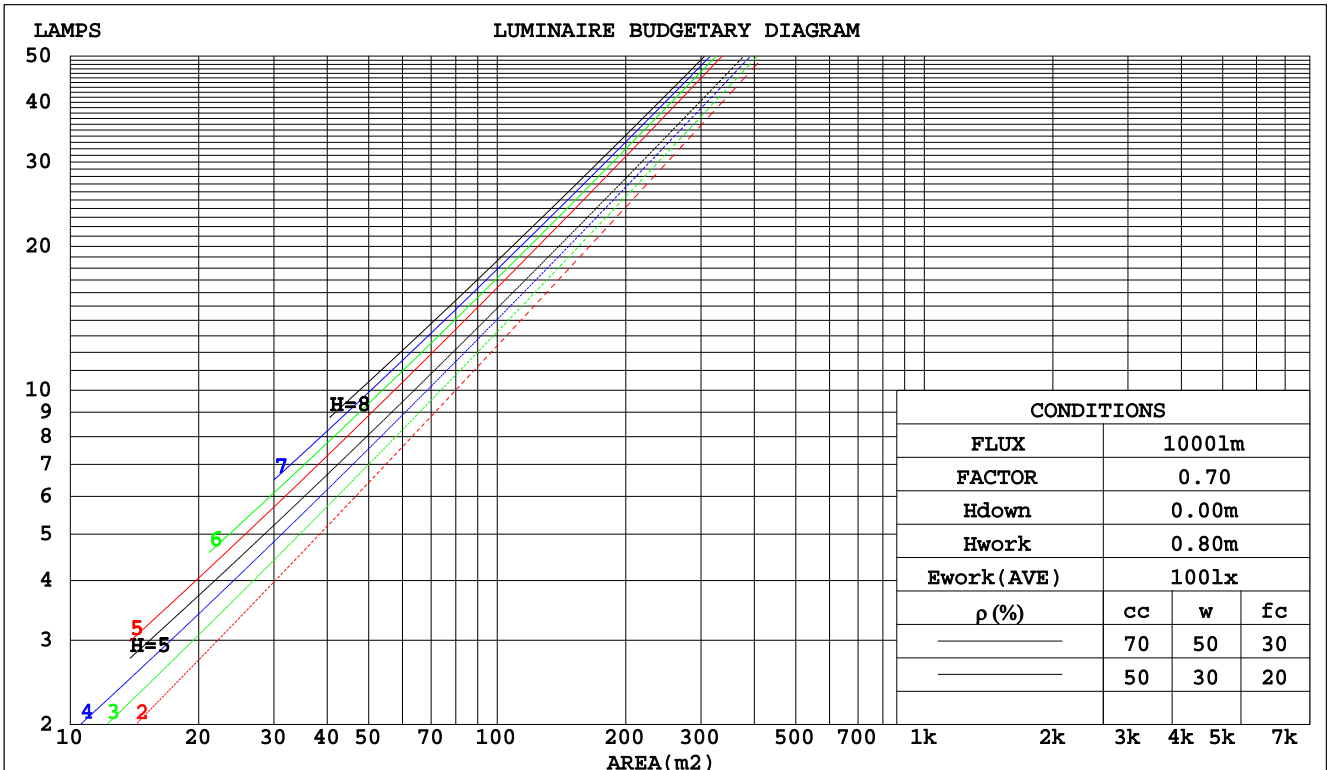
C Range: 0 - 360DEG
 C Interval: 22.5DEG
 Test Speed: HIGH
 Temperature: 25.2DEG
 Operators:
 Test Date: 2017-04-13

γ Range: 0 - 180DEG
 γ Interval: 0.5DEG
 Test System: EVERFINE GO-R5000_V2 SYSTEM V2.0.292
 Humidity: 29.6%
 Test Distance: 1.197m [K=1.0000]
 Remarks:

CU AND LUMINAIRE BUDGETARY ESTIMATE DIAGRAM

Test:U:12.00V I:0.7219A P:7.940W PF:0.9166 Freq:50.00Hz Lamp Flux:677.619x1 lm		
NAME: MR16-8-940-35D-DIM	TYPE:	WEIGHT:
SPEC.:	DIM.:	SERIAL No.:
MFR.: RAB Lighting Inc	SUR.:	Shielding Angle:

pcc	80%			70%			50%			30%			10%			0
pw	50%	30%	10%	50%	30%	10%	50%	30%	10%	50%	30%	10%	50%	30%	10%	0
pfc	20%			20%			20%			20%			20%			0
RCR	RCR:Room Cavity Ratio						Coefficients of Utilization(CU)									
0.0	1.19	1.19	1.19	1.16	1.16	1.16	1.11	1.11	1.11	1.06	1.06	1.06	1.02	1.02	1.02	.00
1.0	1.12	1.10	1.08	1.10	1.08	1.06	1.06	1.04	1.03	1.02	1.01	.00	.99	.98	.97	.95
2.0	1.06	1.02	.99	1.04	1.01	.98	1.01	.98	.96	.98	.96	.94	.95	.94	.92	.91
3.0	1.00	.96	.93	.99	.95	.92	.96	.93	.91	.94	.92	.89	.92	.90	.88	.87
4.0	.96	.91	.88	.95	.90	.87	.92	.89	.86	.91	.88	.85	.89	.86	.84	.83
5.0	.91	.87	.83	.91	.86	.83	.89	.85	.82	.87	.84	.81	.86	.83	.81	.80
6.0	.88	.83	.79	.87	.82	.79	.86	.82	.79	.84	.81	.78	.83	.80	.78	.76
7.0	.84	.79	.76	.84	.79	.76	.82	.78	.76	.81	.78	.75	.80	.77	.75	.74
8.0	.81	.76	.73	.81	.76	.73	.80	.76	.73	.79	.75	.72	.78	.75	.72	.71
9.0	.78	.74	.70	.78	.73	.70	.77	.73	.70	.76	.72	.70	.75	.72	.70	.69
10.0	.76	.71	.68	.75	.71	.68	.74	.70	.68	.74	.70	.67	.73	.70	.67	.66



C Range: 0 - 360DEG
 C Interval: 22.5DEG
 Test Speed: HIGH
 Temperature: 25.2DEG
 Operators:
 Test Date: 2017-04-13

γ Range: 0 - 180DEG
 γ Interval: 0.5DEG
 Test System: EVERFINE GO-R5000_V2 SYSTEM V2.0.292
 Humidity: 29.6%
 Test Distance: 1.197m [K=1.0000]
 Remarks:

WEC AND CCEC

Test:U:12.00V I:0.7219A P:7.940W PF:0.9166 Freq:50.00Hz Lamp Flux:677.619x1 lm		
NAME: MR16-8-940-35D-DIM	TYPE:	WEIGHT:
SPEC.:	DIM.:	SERIAL No.:
MFR.: RAB Lighting Inc	SUR.:	Shielding Angle:

ρcc	80%			70%			50%			30%			10%			0
ρw	50%	30%	10%	50%	30%	10%	50%	30%	10%	50%	30%	10%	50%	30%	10%	0
ρfc	20%			20%			20%			20%			20%			0
RCR	RCR:Room Cavity Ratio						Wall Exitance Coefficients(WEC)									
0.0																
1.0	.155	.088	.028	.148	.085	.027	.136	.078	.025	.124	.071	.023	.113	.066	.021	
2.0	.144	.079	.024	.139	.076	.024	.128	.071	.022	.119	.067	.021	.110	.062	.020	
3.0	.135	.072	.021	.130	.070	.021	.121	.066	.020	.113	.062	.019	.106	.058	.018	
4.0	.127	.066	.019	.123	.064	.019	.115	.061	.018	.108	.058	.018	.102	.055	.017	
5.0	.119	.061	.018	.116	.060	.017	.109	.057	.017	.103	.055	.016	.098	.052	.016	
6.0	.113	.057	.016	.110	.056	.016	.104	.053	.016	.099	.052	.015	.094	.050	.015	
7.0	.107	.053	.015	.105	.052	.015	.100	.050	.015	.095	.049	.014	.091	.047	.014	
8.0	.102	.050	.014	.100	.049	.014	.096	.048	.014	.092	.046	.013	.088	.045	.013	
9.0	.098	.047	.013	.096	.047	.013	.092	.045	.013	.088	.044	.013	.085	.043	.012	
10.0	.094	.045	.012	.092	.044	.012	.088	.043	.012	.085	.042	.012	.082	.041	.012	

ρcc	80%			70%			50%			30%			10%			0
ρw	50%	30%	10%	50%	30%	10%	50%	30%	10%	50%	30%	10%	50%	30%	10%	0
ρfc	20%			20%			20%			20%			20%			0
RCR	RCR:Room Cavity Ratio						Ceiling Cavity Exitance Coefficients(CCEC)									
0.0	.192	.192	.192	.164	.164	.164	.112	.112	.112	.064	.064	.064	.021	.021	.021	
1.0	.172	.160	.149	.147	.137	.128	.100	.094	.088	.058	.055	.051	.019	.018	.017	
2.0	.155	.135	.118	.132	.116	.102	.091	.080	.071	.052	.047	.042	.017	.015	.014	
3.0	.140	.115	.095	.120	.100	.083	.083	.069	.058	.048	.040	.034	.015	.013	.011	
4.0	.129	.100	.079	.110	.087	.068	.076	.060	.048	.044	.035	.028	.014	.012	.009	
5.0	.119	.088	.066	.102	.076	.057	.070	.053	.040	.041	.031	.024	.013	.010	.008	
6.0	.110	.078	.056	.095	.068	.048	.065	.048	.034	.038	.028	.020	.012	.009	.007	
7.0	.103	.070	.048	.089	.061	.042	.061	.043	.029	.036	.025	.018	.011	.008	.006	
8.0	.097	.064	.041	.083	.055	.036	.058	.039	.026	.033	.023	.015	.011	.008	.005	
9.0	.091	.058	.036	.078	.051	.032	.054	.036	.022	.032	.021	.013	.010	.007	.004	
10.0	.086	.054	.032	.074	.047	.028	.052	.033	.020	.030	.019	.012	.010	.006	.004	

C Range: 0 - 360DEG
 C Interval: 22.5DEG
 Test Speed: HIGH
 Temperature:25.2DEG
 Operators:
 Test Date:2017-04-13

γ Range: 0 - 180DEG
 γ Interval: 0.5DEG
 Test System:EVERFINE GO-R5000_V2 SYSTEM V2.0.292
 Humidity:29.6%
 Test Distance:1.197m [K=1.0000]
 Remarks:

UGR(Unified Glare Rating) Table

Test:U:12.00V I:0.7219A P:7.940W PF:0.9166 Freq:50.00Hz Lamp Flux:677.619x1 lm										
NAME: MR16-8-940-35D-DIM					TYPE:			WEIGHT:		
SPEC.:					DIM.:			SERIAL No.:		
MFR.: RAB Lighting Inc					SUR.:			Shielding Angle:		
ceiling/cavity	0.7	0.7	0.5	0.5	0.3	0.7	0.7	0.5	0.5	0.3
walls	0.5	0.3	0.5	0.3	0.3	0.5	0.3	0.5	0.3	0.3
working plane	0.2	0.2	0.2	0.2	0.2	0.2	0.2	0.2	0.2	0.2
Room dimensions	Viewed crosswise					Viewed endwise				
x = 2H y = 2H	-9.9	-9.1	-9.7	-9.0	-8.8	-9.8	-9.1	-9.6	-8.9	-8.8
3H	-8.7	-8.0	-8.4	-7.8	-7.6	-8.6	-7.9	-8.4	-7.7	-7.5
4H	-8.2	-7.5	-7.9	-7.3	-7.1	-8.1	-7.4	-7.8	-7.2	-7.0
6H	-7.8	-7.2	-7.5	-6.9	-6.7	-7.7	-7.1	-7.4	-6.9	-6.6
8H	-7.7	-7.1	-7.4	-6.8	-6.6	-7.6	-7.0	-7.3	-6.8	-6.5
12H	-7.6	-7.0	-7.3	-6.8	-6.5	-7.6	-7.0	-7.3	-6.7	-6.5
4H 2H	-9.4	-8.7	-9.1	-8.5	-8.3	-9.4	-8.7	-9.1	-8.5	-8.3
3H	-8.0	-7.4	-7.7	-7.1	-6.9	-7.9	-7.4	-7.6	-7.1	-6.8
4H	-7.4	-6.8	-7.0	-6.5	-6.2	-7.3	-6.8	-7.0	-6.5	-6.2
6H	-6.9	-6.4	-6.5	-6.1	-5.7	-6.8	-6.4	-6.5	-6.0	-5.7
8H	-6.7	-6.3	-6.3	-5.9	-5.6	-6.7	-6.3	-6.3	-5.9	-5.5
12H	-6.6	-6.2	-6.2	-5.9	-5.5	-6.6	-6.2	-6.2	-5.9	-5.5
8H 4H	-7.2	-6.7	-6.8	-6.4	-6.0	-7.1	-6.7	-6.7	-6.3	-5.9
6H	-6.6	-6.2	-6.1	-5.8	-5.4	-6.5	-6.2	-6.1	-5.8	-5.3
8H	-6.3	-6.0	-5.9	-5.6	-5.1	-6.3	-6.0	-5.9	-5.6	-5.1
12H	-6.2	-5.9	-5.7	-5.5	-5.0	-6.2	-5.9	-5.7	-5.5	-5.0
12H 4H	-7.2	-6.8	-6.8	-6.4	-6.0	-7.1	-6.7	-6.7	-6.3	-5.9
6H	-6.5	-6.2	-6.1	-5.8	-5.3	-6.5	-6.2	-6.0	-5.8	-5.3
8H	-6.3	-6.0	-5.8	-5.6	-5.1	-6.3	-6.0	-5.8	-5.5	-5.1
Variations with the observer position at spacings:										
S = 1.0H	+ 0.4 / - 0.4					+ 0.3 / - 0.4				
1.5H	+ 0.7 / - 0.4					+ 0.5 / - 0.3				
2.0H	+ 0.3 / - 0.3					+ 0.3 / - 0.3				

CIE Pub.117, 677.6 lm Total Lamp Luminous Flux Corrected (8log(F/F0) = -1.4)

C Range: 0 - 360DEG
 C Interval: 22.5DEG
 Test Speed: HIGH
 Temperature:25.2DEG
 Operators:
 Test Date:2017-04-13

γ Range: 0 - 180DEG
 γ Interval: 0.5DEG
 Test System:EVERFINE GO-R5000_V2 SYSTEM V2.0.292
 Humidity:29.6%
 Test Distance:1.197m [K=1.0000]
 Remarks:

UTILIZATION FACTORS TABLE

Test:U:12.00V I:0.7219A P:7.940W PF:0.9166 Freq:50.00Hz Lamp Flux:677.619x1 lm		
NAME: MR16-8-940-35D-DIM	TYPE:	WEIGHT:
SPEC.:	DIM.:	SERIAL No.:
MFR.: RAB Lighting Inc	SUR.:	Shielding Angle:

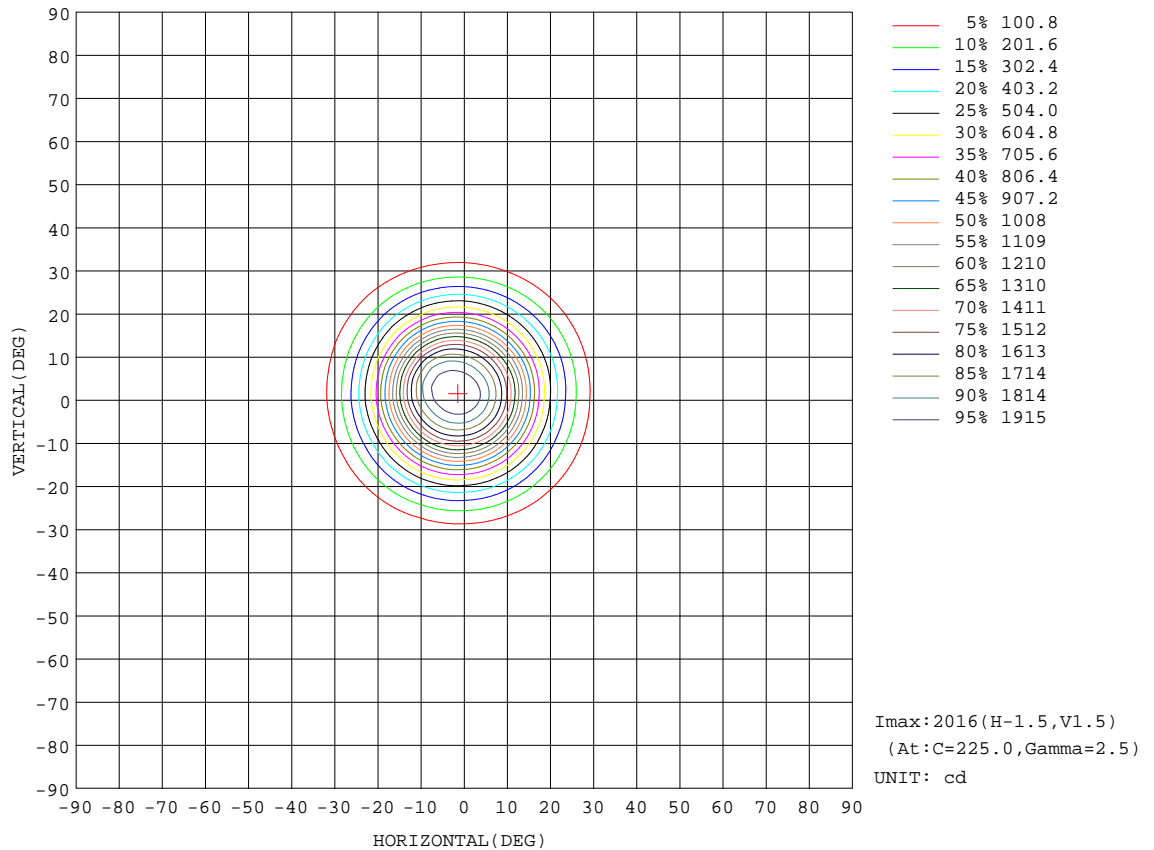
REFLECTANCE										
Ceiling	0.8	0.8	0.8	0.7	0.7	0.7	0.5	0.5	0.5	0
Walls	0.7	0.5	0.3	0.7	0.5	0.3	0.7	0.5	0.3	0
Working plane	0.2	0.2	0.2	0.2	0.2	0.2	0.2	0.2	0.2	0
ROOM INDEX	UTILIZATION FACTORS(PERCENT) $k(RI) \times RCR = 5$									
k = 0.60	89	82	79	88	82	79	87	82	79	75
0.80	96	90	87	95	90	86	94	89	86	82
1.00	100	94	91	99	94	91	97	94	90	86
1.25	104	99	95	103	98	95	101	97	94	90
1.50	106	102	98	105	101	98	103	99	97	92
2.00	109	105	101	107	104	101	105	102	99	94
2.50	110	107	104	109	105	103	106	103	101	95
3.00	112	108	106	110	107	105	107	104	102	96
4.00	114	111	109	112	109	108	108	106	105	98
5.00	115	113	111	113	111	110	109	108	106	99
ROOM INDEX	UF(total)									Direct
According to DIN EN 13032-2 2004			Suspended				SHRNOM = 1.25			

C Range: 0 - 360DEG
 C Interval: 22.5DEG
 Test Speed: HIGH
 Temperature:25.2DEG
 Operators:
 Test Date:2017-04-13

γ Range: 0 - 180DEG
 γ Interval: 0.5DEG
 Test System:EVERFINE GO-R5000_V2 SYSTEM V2.0.292
 Humidity:29.6%
 Test Distance:1.197m [K=1.0000]
 Remarks:

ISOCANDELA DIAGRAM

Test:U:12.00V I:0.7219A P:7.940W PF:0.9166 Freq:50.00Hz Lamp Flux:677.619x1 lm		
NAME: MR16-8-940-35D-DIM	TYPE:	WEIGHT:
SPEC.:	DIM.:	SERIAL No.:
MFR.: RAB Lighting Inc	SUR.:	Shielding Angle:

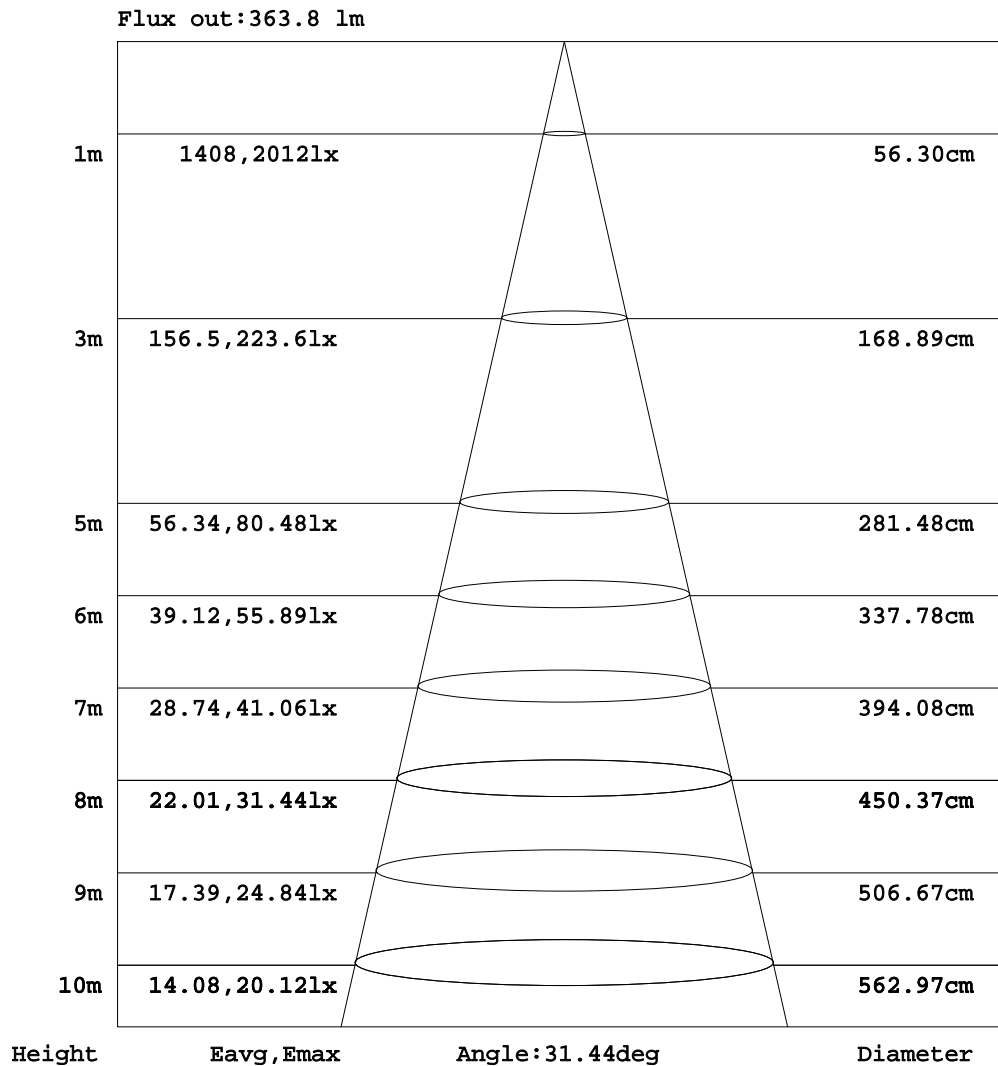


C Range: 0 - 360DEG
 C Interval: 22.5DEG
 Test Speed: HIGH
 Temperature: 25.2DEG
 Operators:
 Test Date: 2017-04-13

γ Range: 0 - 180DEG
 γ Interval: 0.5DEG
 Test System: EVERFINE GO-R5000_V2 SYSTEM V2.0.292
 Humidity: 29.6%
 Test Distance: 1.197m [K=1.0000]
 Remarks:

AAI Figure

Test:U:12.00V I:0.7219A P:7.940W PF:0.9166 Freq:50.00Hz Lamp Flux:677.619x1 lm		
NAME: MR16-8-940-35D-DIM	TYPE:	WEIGHT:
SPEC.:	DIM.:	SERIAL No.:
MFR.: RAB Lighting Inc	SUR.:	Shielding Angle:



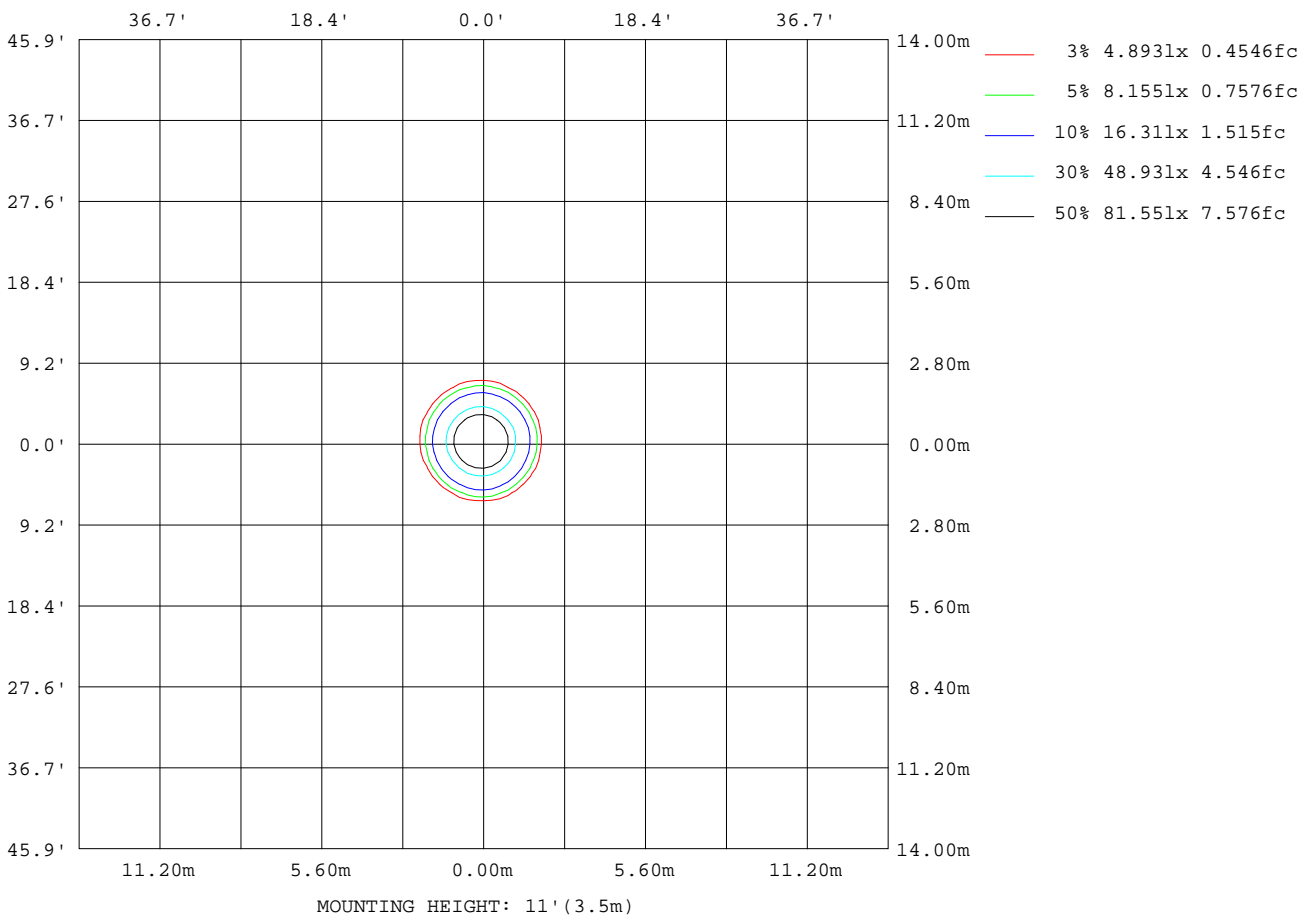
Note:The Curves indicate the illuminated area and the average illumination when the luminaire is at different distance.

C Range: 0 - 360DEG
 C Interval: 22.5DEG
 Test Speed: HIGH
 Temperature:25.2DEG
 Operators:
 Test Date:2017-04-13

γ Range: 0 - 180DEG
 γ Interval: 0.5DEG
 Test System:EVERFINE GO-R5000_V2 SYSTEM V2.0.292
 Humidity:29.6%
 Test Distance:1.197m [K=1.0000]
 Remarks:

ISOLUX DIAGRAM

Test:U:12.00V I:0.7219A P:7.940W PF:0.9166 Freq:50.00Hz Lamp Flux:677.619x1 lm		
NAME: MR16-8-940-35D-DIM	TYPE:	WEIGHT:
SPEC.:	DIM.:	SERIAL No.:
MFR.: RAB Lighting Inc	SUR.:	Shielding Angle:



C Range: 0 - 360DEG
 C Interval: 22.5DEG
 Test Speed: HIGH
 Temperature: 25.2DEG
 Operators:
 Test Date: 2017-04-13

γ Range: 0 - 180DEG
 γ Interval: 0.5DEG
 Test System: EVERFINE GO-R5000_V2 SYSTEM V2.0.292
 Humidity: 29.6%
 Test Distance: 1.197m [K=1.0000]
 Remarks:

LED Avg.L Report

Test:U:12.00V I:0.7219A P:7.940W PF:0.9166 Freq:50.00Hz Lamp Flux:677.619x1 lm		
NAME: MR16-8-940-35D-DIM	TYPE:	WEIGHT:
SPEC.:	DIM.:	SERIAL No.:
MFR.: RAB Lighting Inc	SUR.:	Shielding Angle:

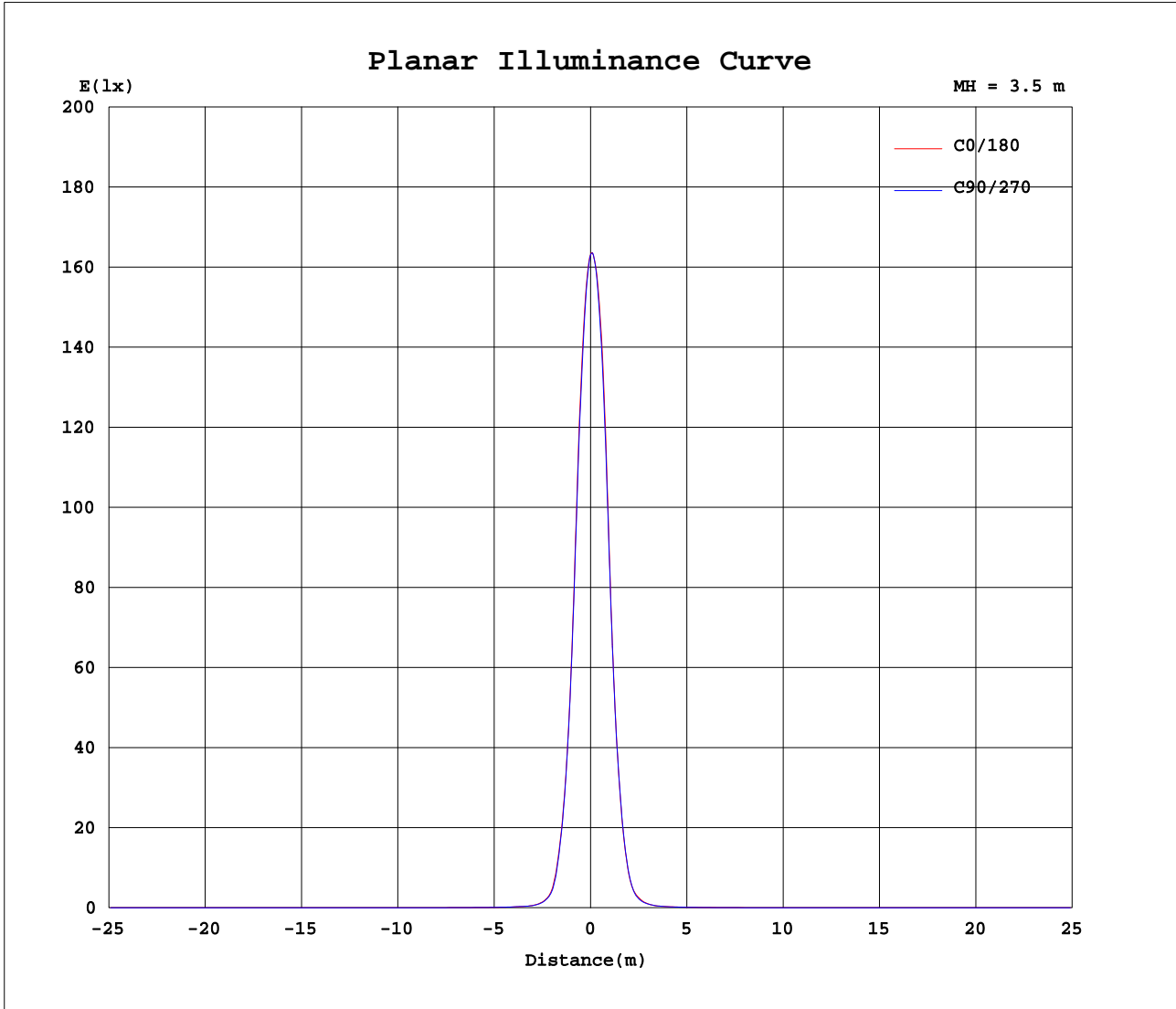
AvgL	cd/m2
L_0~180(65)av	16
L_0~180(75)av	14
L_0~180(85)av	11
L_90~270(65)av	15
L_90~270(75)av	13
L_90~270(85)av	10
L_45(65)av	15
L_45(75)av	13
L_45(85)av	10

Standard: GB/T 29293-2012

C Range: 0 - 360DEG
 C Interval: 22.5DEG
 Test Speed: HIGH
 Temperature:25.2DEG
 Operators:
 Test Date:2017-04-13

γ Range: 0 - 180DEG
 γ Interval: 0.5DEG
 Test System:EVERFINE GO-R5000_V2 SYSTEM V2.0.292
 Humidity:29.6%
 Test Distance:1.197m [K=1.0000]
 Remarks:

Planar Illuminance Curve



C Range: 0 - 360DEG
 C Interval: 22.5DEG
 Test Speed: HIGH
 Temperature: 25.2DEG
 Operators:
 Test Date: 2017-04-13

γ Range: 0 - 180DEG
 γ Interval: 0.5DEG
 Test System: EVERFINE GO-R5000_V2 SYSTEM V2.0.292
 Humidity: 29.6%
 Test Distance: 1.197m [K=1.0000]
 Remarks:

LUMINOUS DISTRIBUTION INTENSITY DATA

Test:U:12.00V I:0.7219A P:7.940W PF:0.9166 Freq:50.00Hz Lamp Flux:677.619x1 lm		
NAME: MR16-8-940-35D-DIM	TYPE:	WEIGHT:
SPEC.:	DIM.:	SERIAL No.:
MFR.: RAB Lighting Inc	SUR.:	Shielding Angle:

Table--1

UNIT: cd

C(DEG) γ (DEG)	0	22.5	45	67.5	90	112.5	135	157.5	180	202.5	225	247.5	270	292.5	315	337.5			
0	1998	2000	1999	1999	1998	1998	1998	1998	1998	2000	1999	1999	1998	1998	1998	1998			
5	1847	1826	1812	1812	1825	1853	1889	1929	1968	1993	1999	1985	1961	1932	1902	1875			
10	1487	1447	1420	1426	1457	1514	1591	1678	1771	1836	1845	1804	1736	1670	1604	1546			
15	930	889	872	878	911	975	1065	1166	1289	1372	1396	1351	1266	1174	1086	1009			
20	497	471	461	467	487	532	587	655	740	795	815	791	733	668	605	557			
25	236	216	211	215	225	246	280	315	368	397	412	400	375	338	304	271			
30	82.1	77.1	72.0	72.4	75.2	82.0	95.9	116	143	161	169	163	149	131	113	97.4			
35	36.5	34.8	32.7	32.8	33.8	36.1	41.3	49.4	63.3	70.5	68.7	64.4	57.4	49.8	43.6	40.0			
40	18.5	17.4	17.1	17.0	17.1	17.6	19.8	23.4	30.0	34.9	34.4	32.3	28.4	25.2	23.2	20.8			
45	12.4	12.6	12.4	12.7	12.6	12.6	13.2	13.8	16.2	17.9	18.5	17.9	16.4	15.2	14.3	13.3			
50	9.48	9.52	9.55	9.95	9.83	9.97	10.8	11.5	12.8	13.0	12.7	12.6	11.5	10.9	10.4	9.80			
55	8.17	8.14	8.39	8.50	8.28	8.40	8.89	9.48	10.6	10.8	10.4	10.3	9.36	9.02	8.78	8.41			
60	7.01	7.02	7.12	7.30	7.21	7.24	7.56	8.07	9.01	9.17	8.86	8.78	8.11	7.91	7.66	7.30			
65	5.77	5.78	5.84	5.94	5.92	5.97	6.21	6.53	7.36	7.51	7.28	7.23	6.75	6.49	6.28	5.96			
70	4.47	4.45	4.44	4.51	4.55	4.57	4.79	5.00	5.68	5.77	5.58	5.56	5.24	5.03	4.83	4.58			
75	3.14	3.12	3.10	3.11	3.15	3.22	3.37	3.53	4.00	4.12	3.98	3.94	3.77	3.59	3.41	3.23			
80	1.89	1.86	1.84	1.83	1.86	1.90	2.03	2.15	2.44	2.56	2.49	2.47	2.35	2.22	2.11	1.97			
85	0.78	0.75	0.71	0.70	0.69	0.73	0.82	0.92	1.09	1.18	1.17	1.16	1.10	1.02	0.95	0.86			
90	0.09	0.08	0.07	0.06	0.06	0.06	0.06	0.09	0.15	0.19	0.21	0.21	0.19	0.16	0.11	0.09			
95	0.08	0.08	0.07	0.07	0.07	0.07	0.07	0.07	0.07	0.07	0.07	0.07	0.07	0.07	0.08	0.08			
100	0.09	0.09	0.09	0.09	0.08	0.08	0.08	0.08	0.08	0.08	0.08	0.08	0.08	0.09	0.09	0.09			
105	0.11	0.11	0.10	0.10	0.10	0.10	0.10	0.10	0.10	0.10	0.10	0.10	0.10	0.10	0.11	0.11			
110	0.13	0.13	0.13	0.12	0.12	0.12	0.12	0.12	0.11	0.12	0.12	0.12	0.12	0.12	0.13	0.13			
115	0.15	0.15	0.15	0.15	0.15	0.15	0.14	0.14	0.14	0.14	0.14	0.14	0.15	0.15	0.15	0.15			
120	0.20	0.19	0.19	0.19	0.19	0.19	0.19	0.18	0.18	0.18	0.18	0.18	0.19	0.19	0.19	0.19			
125	0.24	0.25	0.23	0.23	0.23	0.25	0.24	0.22	0.22	0.24	0.24	0.23	0.22	0.22	0.24	0.23			
130	0.30	0.34	0.31	0.30	0.31	0.31	0.31	0.28	0.29	0.32	0.32	0.29	0.27	0.27	0.29	0.29			
135	0.51	0.51	0.35	0.33	0.35	2.07	1.66	0.93	2.06	3.22	3.14	2.97	2.83	1.86	2.63	1.03			
140	0.31	0.31	0.30	0.31	0.32	0.30	0.30	0.28	0.28	0.31	0.29	0.30	0.29	0.28	0.30	0.30			
145	0.28	0.29	0.30	0.29	0.27	0.26	0.26	0.27	0.27	0.26	0.26	0.26	0.27	0.28	0.29	0.27			
150	0.31	0.31	0.31	0.31	0.30	0.28	0.28	0.29	0.28	0.27	0.28	0.28	0.28	0.29	0.30	0.30			
155	0.32	0.34	0.33	0.32	0.30	0.30	0.30	0.29	0.28	0.28	0.28	0.29	0.29	0.30	0.30	0.31			
160	0.33	0.35	0.35	0.35	0.33	0.32	0.31	0.31	0.30	0.30	0.30	0.31	0.32	0.32	0.33	0.34			
165	0.32	0.35	0.36	0.35	0.34	0.33	0.32	0.32	0.32	0.33	0.33	0.33	0.34	0.34	0.35	0.36			
170	0.25	0.23	0.25	0.25	0.24	0.25	0.26	0.25	0.28	0.28	0.28	0.28	0.29	0.29	0.27	0.25			
175	0.13	0.13	0.13	0.13	0.14	0.14	0.14	0.14	0.15	0.15	0.15	0.15	0.15	0.15	0.15	0.15			
180	0.00	0.00	0.00	0.00	0.00	0.00	0.00	0.00	0.00	0.00	0.00	0.00	0.00	0.00	0.00	0.00			

C Range: 0 - 360DEG
 C Interval: 22.5DEG
 Test Speed: HIGH
 Temperature:25.2DEG
 Operators:
 Test Date:2017-04-13

γ Range: 0 - 180DEG
 γ Interval: 0.5DEG
 Test System:EVERFINE GO-R5000_V2 SYSTEM V2.0.292
 Humidity:29.6%
 Test Distance:1.197m [K=1.0000]
 Remarks: