

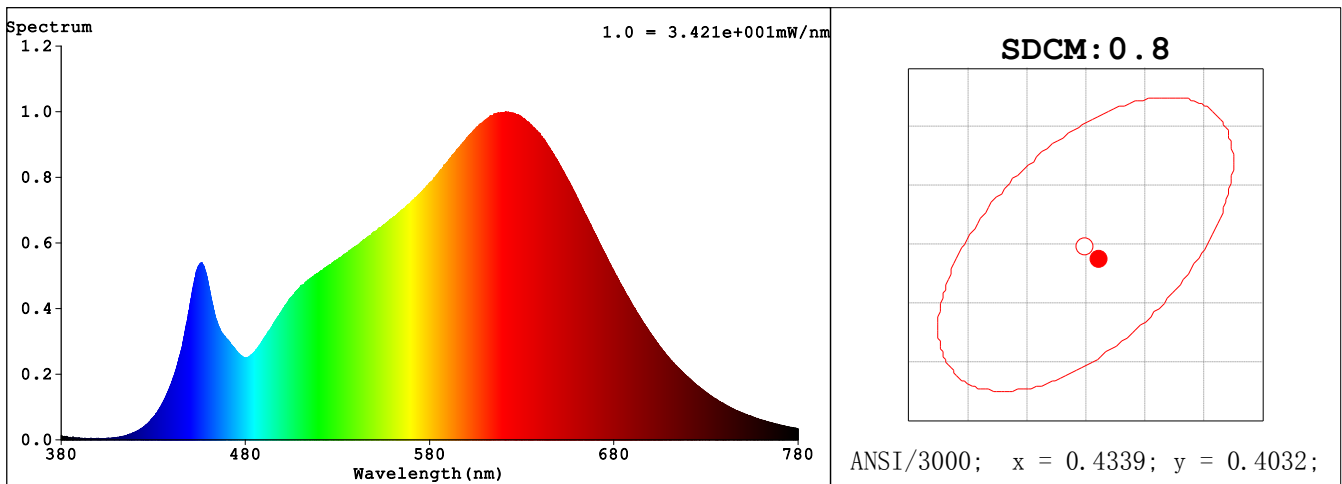
Spectrum Test Report

Sample	:	Date	:	2020-10-06
Specification	:	Sam. Status	:	
Sample No.	:	Standard	:	
Manufacturer	:	Instrument	:	HaasSuite(EVERFINE)
Assessor	:	Test by	:	DAMIN
Remark	:			
Device SN	:			

Test Condition

Temperature	:	24.5Deg	RH	:	65.0%
WL Range	:	380nm-780nm	IP	:	54148 (83%)
Test Mode	:	Fast Test	T	:	107 ms
Sensitivity	:	High			

Spectrum



Colorimetric Parameters

Chromaticity Coordinate: $x = 0.4347$ $y = 0.4024$ / $u' = 0.2498$ $v' = 0.5204$ ($duv = -3.46e-04$)
 CCT= 3025K Prcp WL: Ld=582.8nm Purity=51.3%
 Peak WL: Lp=621nm FWHM: =163.9nm Ratio:R=24.3% G=72.6% B=3.1%
 Render Index: Ra = 94.2

EEL: 0.14804 A+

R1 =95 R2 =98 R3 =99 R4 =94 R5 =95 R6 =97 R7 =92
 R8 =84 R9 =65 R10=94 R11=96 R12=83 R13=96 R14=99 R15=91
 LEVEL:OUT WHITE:ANSI_3000K

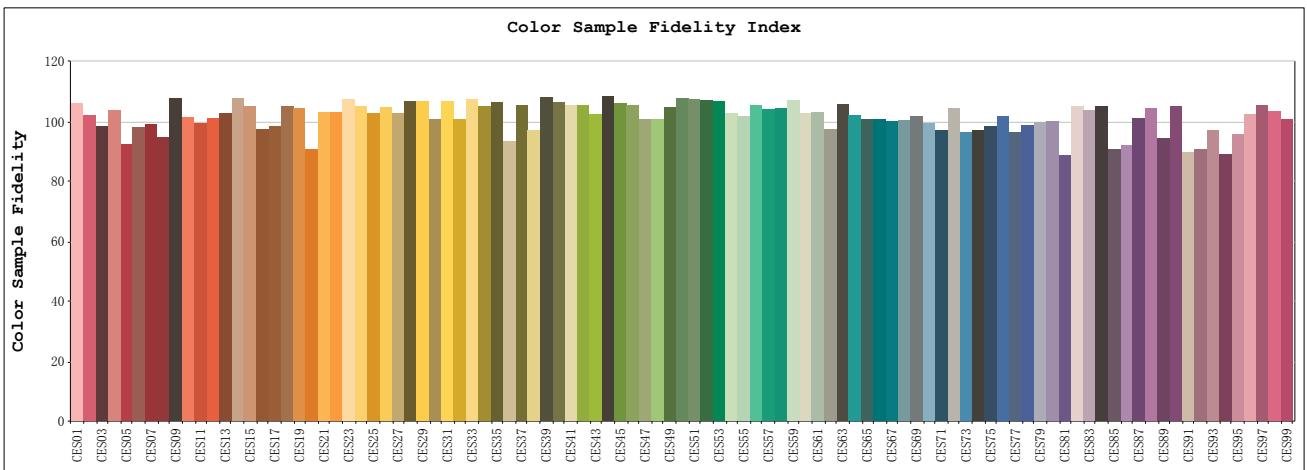
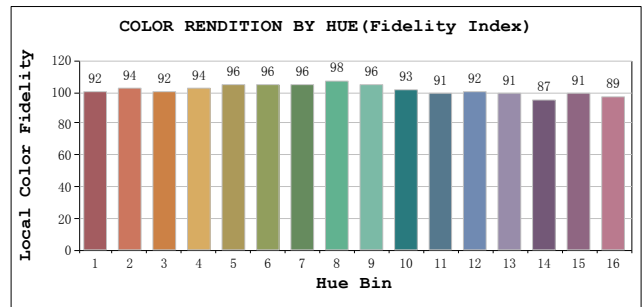
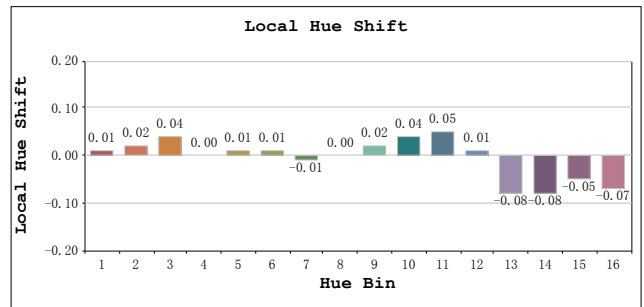
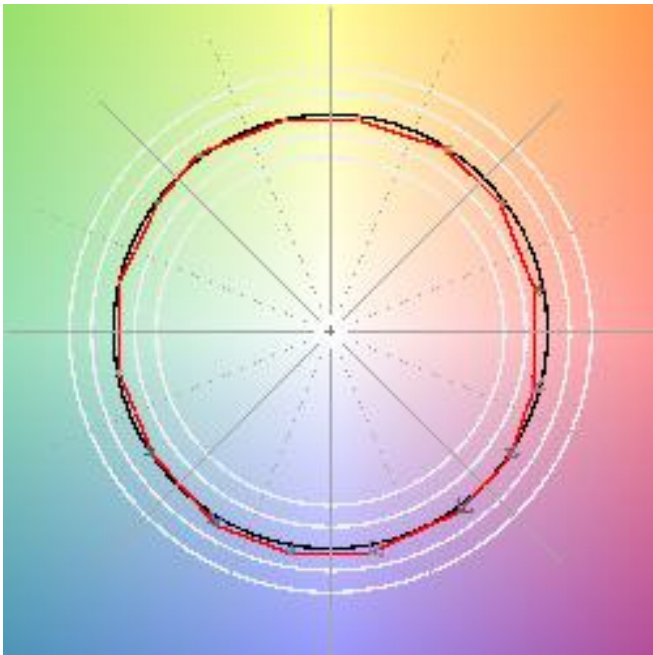
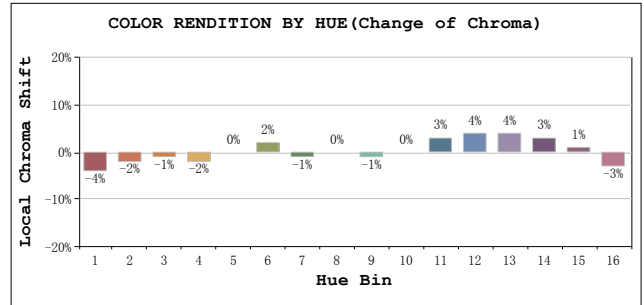
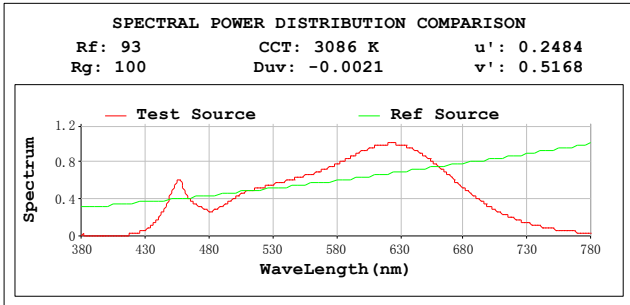
Photometric & Radiometric Parameters

Flux = 1745.8 lm Eff. : 92.02 lm/W Fe = 6.0880 W Scotpic:2536.9 S/P:1.4532

Electrical parameters

V = 119.94 V I = 0.1589 A P = 18.97 W PF = 0.9956 F=59.98 Hz

TM30



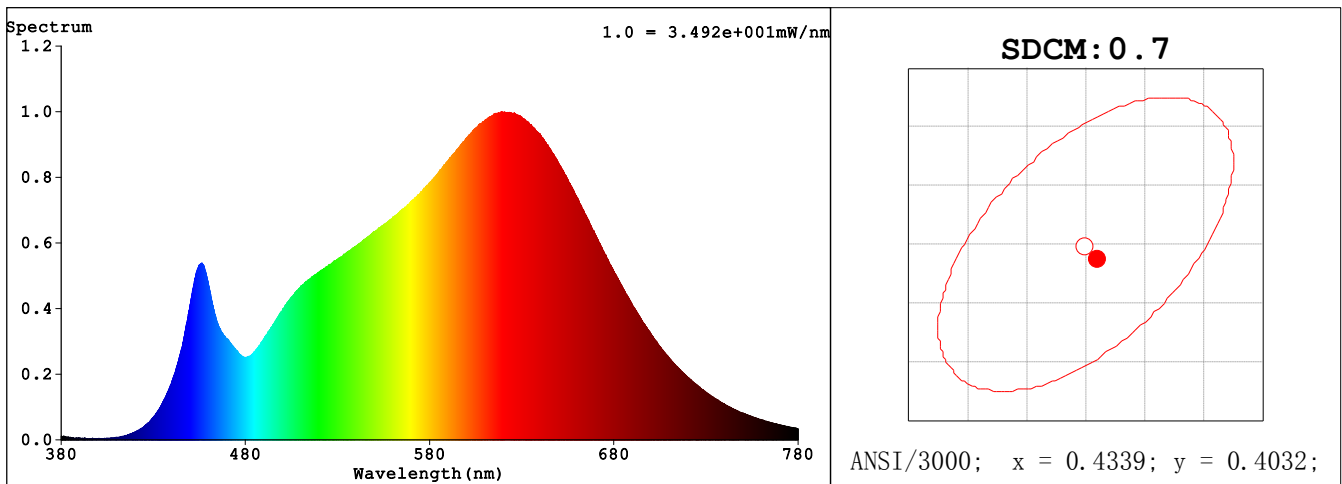
Spectrum Test Report

Sample	:		Date	:	2020-10-06
Specification	:	PAR30L-19-E26-930-40D-ND	Sam. Status	:	
Sample No.	:	277 1	Standard	:	
Manufacturer	:	RAB LIGHTING INC.	Instrument	:	HaasSuite(EVERFINE)
Assessor	:	damin			
Remark	:	---	Test by	:	DAMIN
Device SN	:	30#			

Test Condition

Temperature	:	24.6Deg	RH	:	65.0%
WL Range	:	380nm-780nm	IP	:	55204 (84%)
Test Mode	:	Fast Test	T	:	107 ms
Sensitivity	:	High			

Spectrum



Colorimetric Parameters

Chromaticity Coordinate: $x = 0.4346$ $y = 0.4024$ / $u' = 0.2498$ $v' = 0.5204$ ($duv = -3.36e-04$)
 CCT= 3026K Prcp WL: $L_d = 582.8nm$ Purity=51.2%
 Peak WL: $L_p = 619nm$ FWHM: =164.3nm Ratio:R=24.3% G=72.6% B=3.1%
 Render Index: $R_a = 94.2$

EEL: 0.14723 A+

R1 =95 R2 =98 R3 =99 R4 =94 R5 =95 R6 =97 R7 =92
 R8 =84 R9 =64 R10=94 R11=96 R12=83 R13=96 R14=99 R15=91
 LEVEL:OUT WHITE:ANSI_3000K

Photometric & Radiometric Parameters

Flux = 1779.5 lm Eff. : 92.52 lm/W Fe = 6.2038 W Scotpic:2586.2 S/P:1.4533

Electrical parameters

V = 277.13 V I = 0.07530 A P = 19.23 W PF = 0.9217 F=59.98 Hz

TM30

