

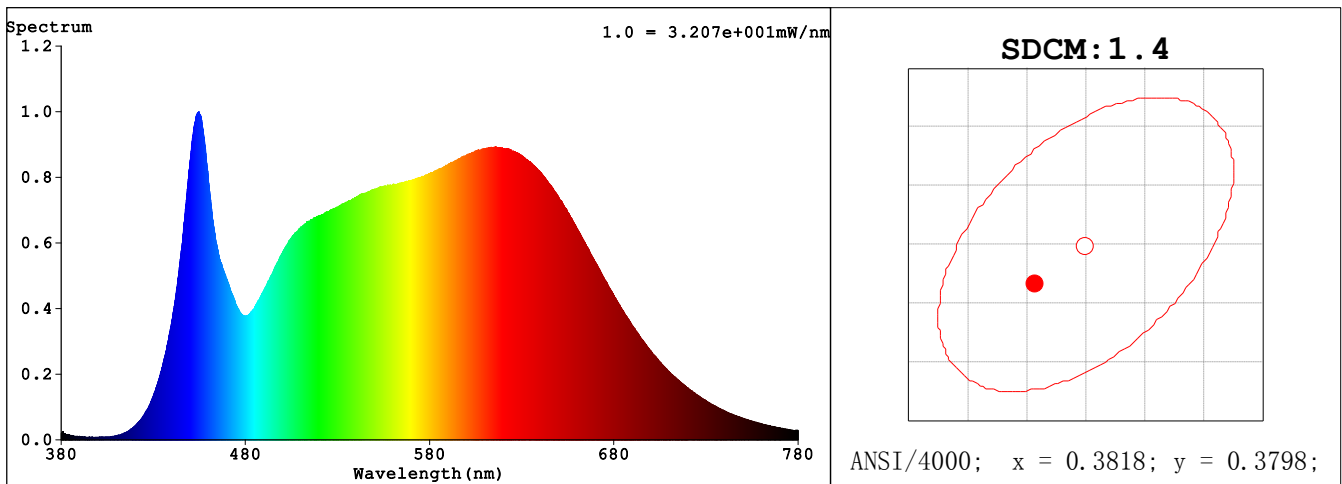
## Spectrum Test Report

Sample :	Date : 2020-10-07
Specification : PAR30L-19-E26-940-40D-ND	Sam. Status :
Sample No. : 120 1	Standard :
Manufacturer : RAB LIGHTING INC.	Instrument : HaasSuite(EVERFINE)
Assessor : damin	
Remark : ---	Test by : DAMIN
Device SN : 20#	

### Test Condition

Temprature : 25.2Deg	RH : 65.0%
WL Range : 380nm-780nm	IP : 54681 (83%)
Test Mode : Fast Test	T : 154 ms
Sensitivity : High	

### Spectrum



### Colorimetric Parameters

Chromaticity Coordinate:  $x = 0.3792$   $y = 0.3776$  /  $u' = 0.2240$   $v' = 0.5018$  ( $duv=7.45e-04$ )

CCT= 4038K Prcp WL: Ld=578.5nm Purity=27.1%

Peak WL: Lp=455nm FWHM: =25.7nm Ratio:R=19.8% G=75.8% B=4.4%

Render Index: Ra = 94.7

EEL: 0.13996 A+

R1 =95.21 R2 =97.32 R3 =97.67 R4 =94.59 R5 =94.13 R6 =94.83 R7 =95.09

R8 =88.69 R9 =72.13 R10=92.51 R11=95.37 R12=74.47 R13=96.11 R14=98.42 R15=92.69

LEVEL:OUT WHITE:ANSI\_4000K

### Photometric & Radiometric Parameters

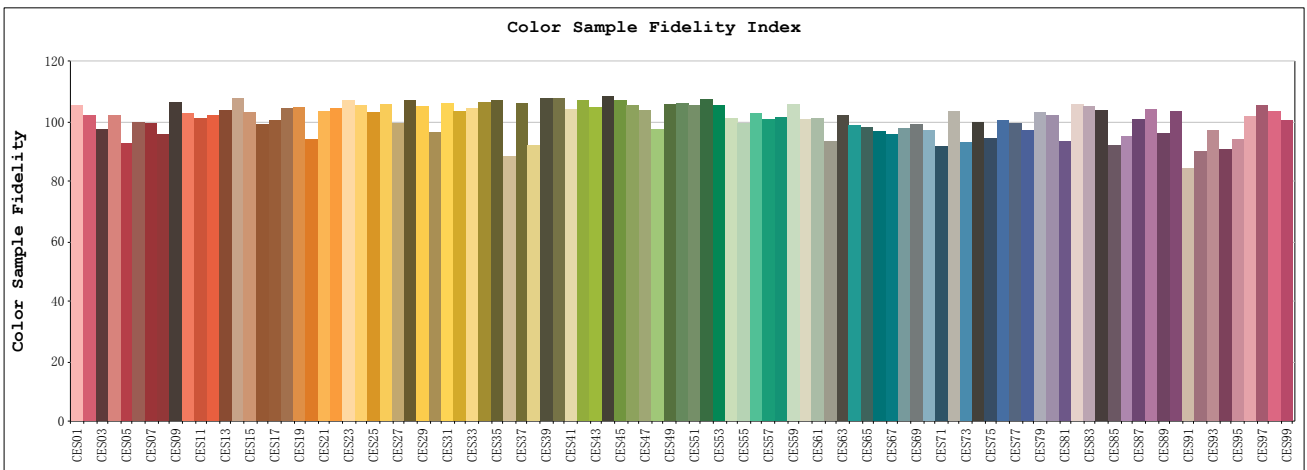
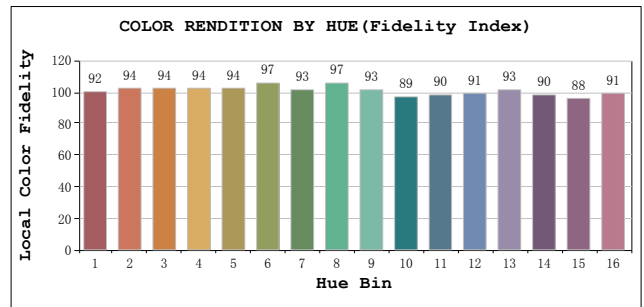
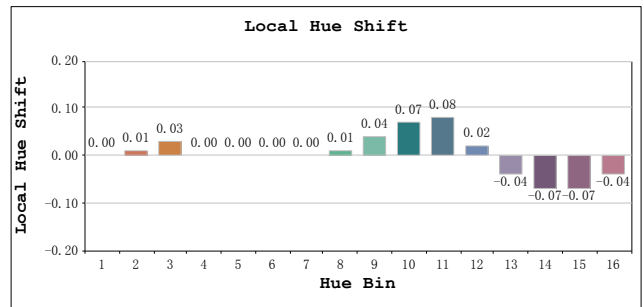
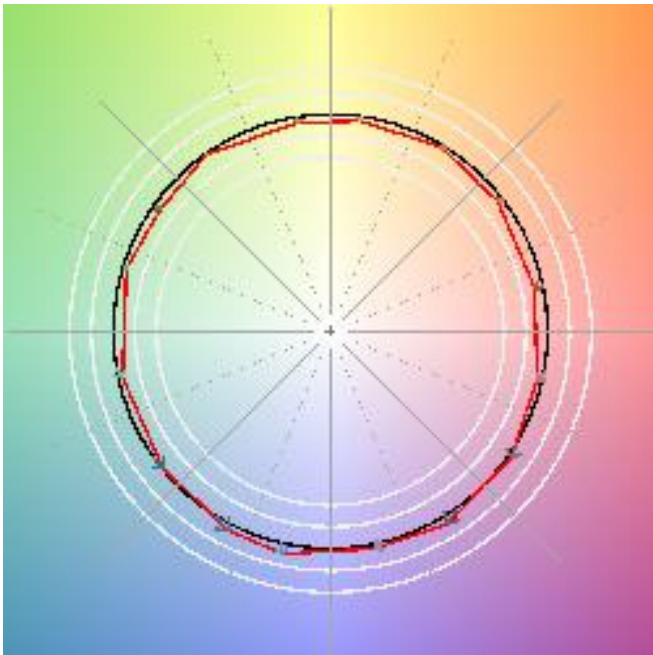
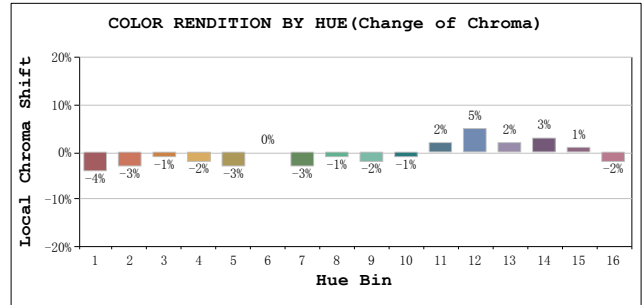
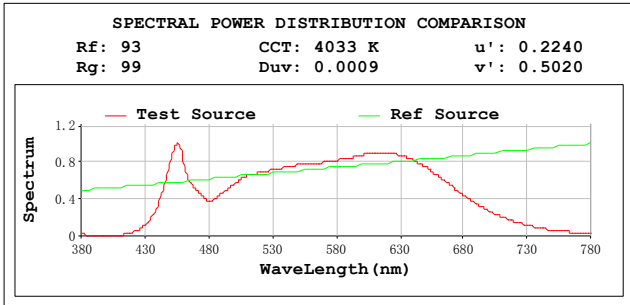
Flux = 1797.8 lm Eff. : 97.33 lm/W Fe = 6.1712 W Scotpic:3282.5 S/P:1.8258

Flux of emitted photons( $\mu\text{mol/s}$ ):29.575 Flu. and blue light ratio:5.530 Fluorescent eff.:281.6

### Electrical parameters

V = 120.15 V I = 0.1545 A P = 18.47 W PF = 0.9953 F=59.98 Hz

# TM30



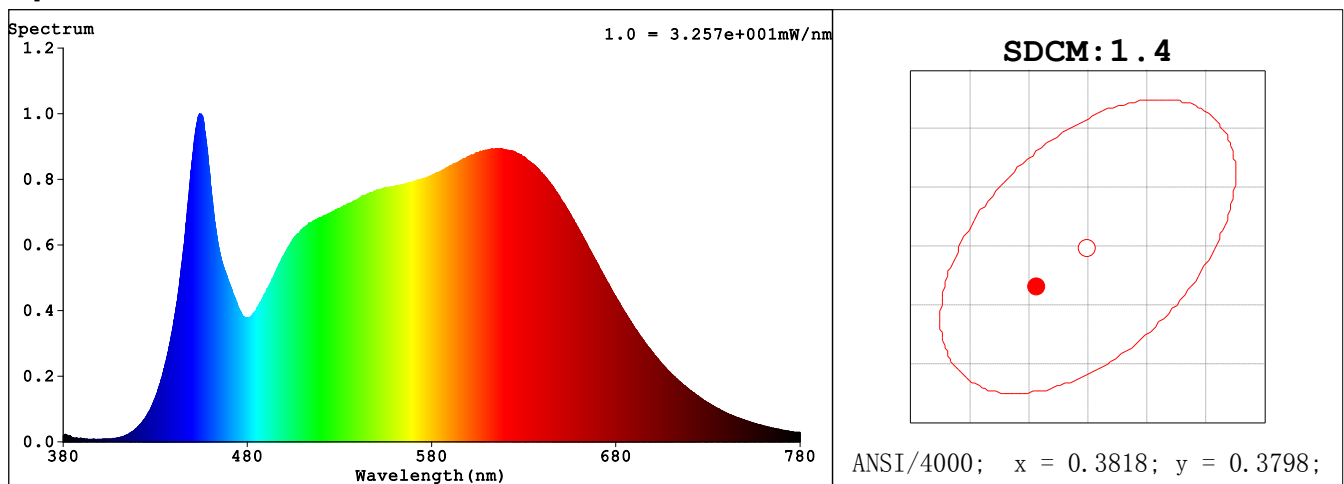
## Spectrum Test Report

Sample :	Date : 2020-10-07
Specification : PAR30L-19-E26-940-40D-ND	Sam. Status :
Sample No. : 277 1	Standard :
Manufacturer : RAB LIGHTING INC.	Instrument : HaasSuite(EVERFINE)
Assessor : damin	
Remark : ---	Test by : DAMIN
Device SN : 20#	

### Test Condition

Temprature : 25.2Deg	RH : 65.0%
WL Range : 380nm-780nm	IP : 55694 (85%)
Test Mode : Fast Test	T : 154 ms
Sensitivity : High	

### Spectrum



### Colorimetric Parameters

Chromaticity Coordinate:  $x = 0.3792$   $y = 0.3775$  /  $u' = 0.2240$   $v' = 0.5017$  ( $duv=7.26e-04$ )

CCT= 4038K Prcp WL: Ld=578.5nm Purity=27.1%

Peak WL: Lp=454nm FWHM: =25.7nm Ratio:R=19.8% G=75.8% B=4.4%

Render Index: Ra = 94.7

EEL: 0.13907 A+

R1 =95.26 R2 =97.33 R3 =97.65 R4 =94.66 R5 =94.19 R6 =94.84 R7 =95.14

R8 =88.79 R9 =72.36 R10=92.53 R11=95.43 R12=74.57 R13=96.14 R14=98.41 R15=92.75

LEVEL:OUT WHITE:ANSI\_4000K

### Photometric & Radiometric Parameters

Flux = 1841.8 lm Eff. : 97.95 lm/W Fe = 6.3242 W Scotopic:3363.3 S/P:1.8261

Flux of emitted photons( $\mu\text{mol/s}$ ):30.308 Fluo. and blue light ratio:5.462 Fluorescent eff.:261.1

### Electrical parameters

V = 277.08 V I = 0.07391 A P = 18.80 W PF = 0.9174 F=59.98 Hz

# TM30

