

Original Data

Relevant Standards

- IES LM-79-2008
- ANSI C82.77:2014

Prepared For RAB lighting INC

170 Ludlow Avenue, Northvale, New Jersey 07647 USA

Prepared By RAB lighting INC

170 Ludlow Avenue, Northvale, New Jersey 07647 USA

Project Number

Data Number

Test Date
2020/9/10

1.0 Test List

Test Item	Test	Test Date	Model Number	Sample No.
1	Integrating Sphere Test	2020/9/10	PLC-9-O-840-HYB	A1
2	Goniophotometer Test	2020/9/10	PLC-9-O-840-HYB	A1
3	THD and PF Test	2020/9/10	PLC-9-O-840-HYB	A1

1.1 Test Summary

Requirement Category	Test Method	Requirements	Test value
Integrating Sphere system			
Power (W)	IES LM-79-2008	9 ±10%	9.0
Lamp Output for bare lamp (lm)	IES LM-79-2008	1250 ±10%	1306
Minimum Lamp Efficacy (lm/W)	IES LM-79-2008	> 125.0	142.2
Allowable CCTs* (K)	IES LM-79-2008	7 step	3985±275
		4 step	3985±154
		7 step	3465±245
		4 step	3465±124
		7 step	3045±175
		4 step	3045±100
		7 step	2725 ± 145
		4 step	2725 ± 83
CRI	IES LM-79-2008 CIE 13.3-1995	>80	83.1
R9	IES LM-79-2008 CIE 13.3-1995	>0	9
Rf	ANSI/IES TM-30-18	>70	85
Rg	ANSI/IES TM-30-18	>89	96
Rcs,h1	ANSI/IES TM-30-18	Rcs=>-12%,h1<=23%	
Power Factor	ANSI C82.77:2014	>0.9	0.9050
Total Harmonic Distortion (A%)	ANSI C82.77:2014	<25%	21.30%
Goniophotometer system			
Lamp Output (lm)	IES LM-79-2008	1250 ±10%	1321.6
Luminaire Efficacy(lm/W)	IES LM-79-2008	> 125	148.5
Beam Angle	IES LM-79-2008		341.5

2.0 Production Description

Luminaire Description: PLC-9-O-840-HYB

Electrical Specification: 120V~277V,50/60HZ

Light source:

Manufacturer Of Light Source: Seoul Semiconductor Co.,LTD

Photos of Luminaire Characteristics



3.0 LM-79 Measurement and Test Results

3.1 Integrating Sphere Test

Model No.	PLC-9-O-840-HYB	Sample ID.	A1
Opreate time (Min.)	15	Stabilization time (Min.)	15
Temperature (°C)	25.3	Humidity %	55

Test Method
<p>The samples were tested according to the IES LM-79-2008.</p> <p>Photometric paramters were measured using an integrating sphere, a spectroradiometer and software. The ambient temperature condition inside the sphere was maintained at 25° C ± 1° C.</p> <p>The sample measurements were made using a spectroradiometer connected by a fiber optic cable and detector through the detector port of the integrating sphere.</p> <p>The voltage of an AC power supply (RMS voltage) or DC power supply (instantaneous voltage) applied to the device under test shall be regulated to within ±0.2 percent under load.</p> <p>The sample was measured using 4π geometry and operated at rated voltage and was stabilized before measurement. Chromaticity coordinates, correlated color temperature and color rendering index were calculated from the spectral radiant flux measurements taken at 1 nm intervals over the range of 380 to 780 nm.</p>

Test Conditions

Temperature (°C)	Voltage (Vac)	Frequency (Hz)	Current (A)	Power (W)	Power Factor	Flux (lm)	Efficacy (lm/W)
25.3	120.00	60.00	0.076	8.977	0.9814	1317.0	146.7
25.3	277.02	60.00	0.037	9.187	0.9050	1306.0	142.2

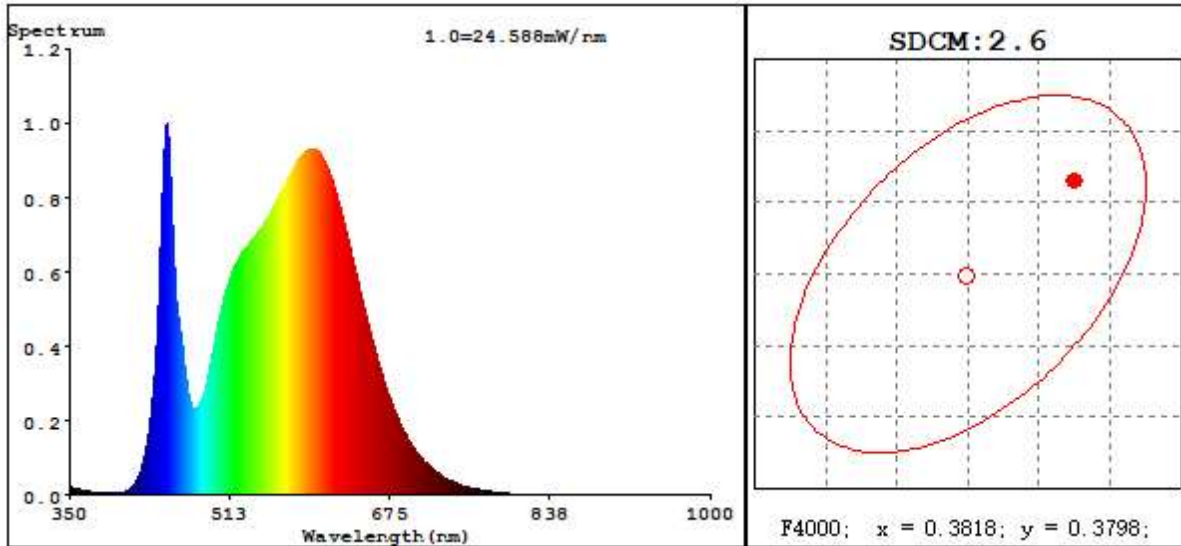
Test Result

Tc(K)	色差(Duv)	Rf	Rg	Ra	R9	SDCM
3900	1.8E-03	85	96	83	9.2	2.6
3902	1.8E-03	85	96	83	9.2	2.5

3.1 Integrating Sphere Test

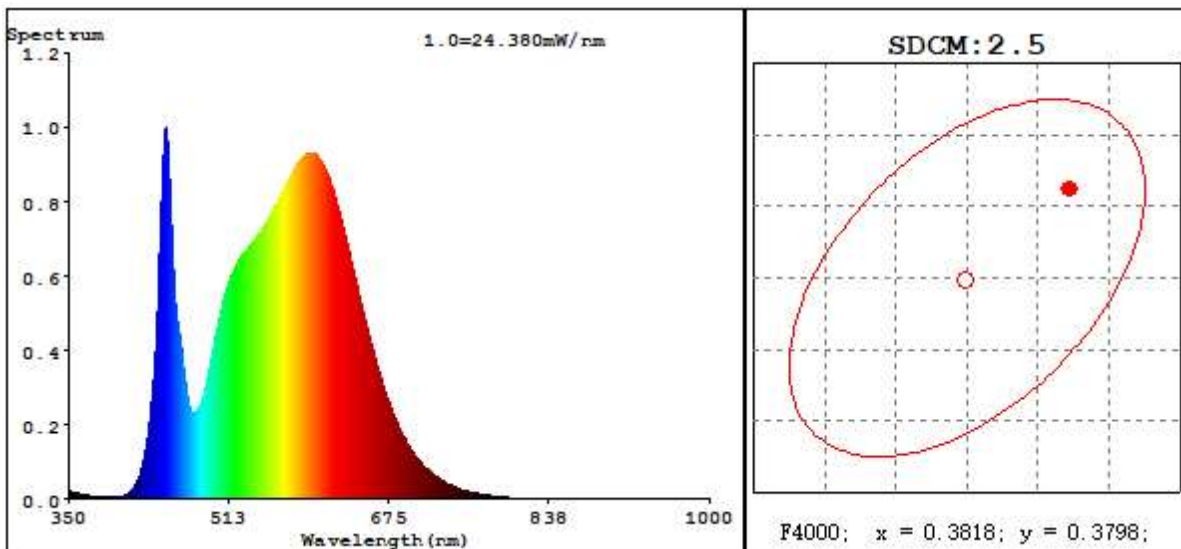
Spectroradiometric Parameters

120V



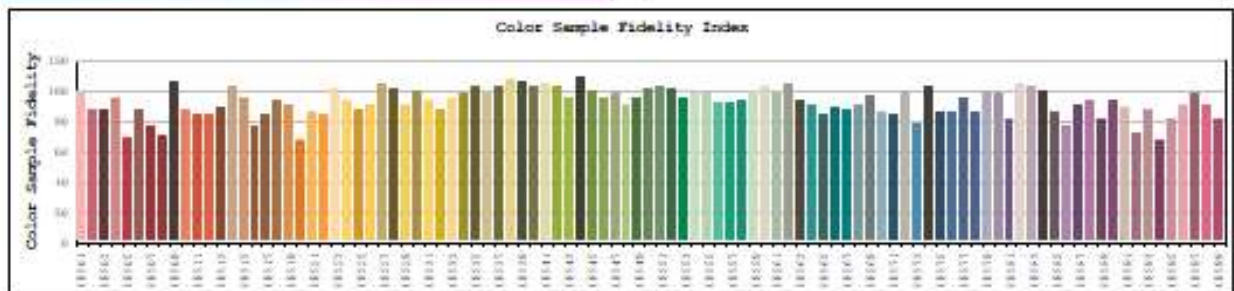
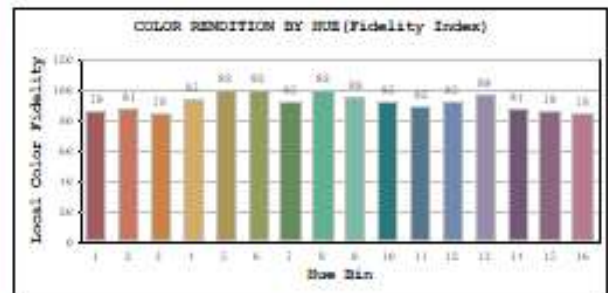
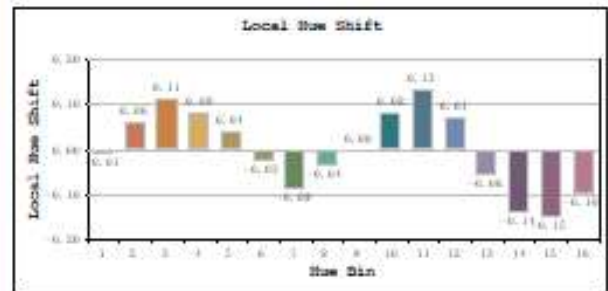
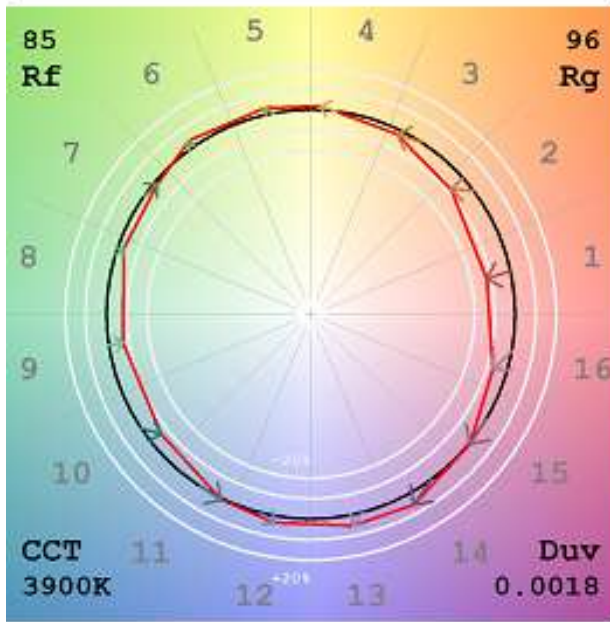
R1 =81.2 R2 =88.2 R3 =94.2 R4 =83.2 R5 =81.5 R6 =84.3 R7 =86.7
 R8 =65.2 R9 =9.2 R10=72.5 R11=82.7 R12=63.4 R13=82.7 R14=96.8 R15=74.8

277V



R1 =81.2 R2 =88.2 R3 =94.3 R4 =83.1 R5 =81.5 R6 =84.3 R7 =86.7
 R8 =65.2 R9 =9.2 R10=72.6 R11=82.6 R12=63.3 R13=82.7 R14=96.8 R15=74.8

3.2 Integrating Sphere Test - Minimum CCT



3.3 Goniophotometer Test

Model No.	PLC-9-O-840-HYB	Sample ID.	0
Operate time (Min.)	15	Stabilization time (Min.)	15

Test Method

The samples were tested according to the IES LM-79-2008. Photometric parameters were measured using an integrating sphere, a spectroradiometer and software. The ambient temperature condition inside the sphere was maintained at 25° C ± 1° C.

The sample measurements were made using a spectroradiometer connected by a fiber optic cable and detector through the detector port of the integrating sphere. The voltage of an AC power supply (RMS voltage) or DC power supply (instantaneous voltage) applied to the device under test shall be regulated to within ± 0.2 percent under load.

The samples were operated at rated voltage and was stabilized before measurement. Luminous flux, luminaire efficacy, zonal lumen were calculated from the software taken at 0.50 vertical intervals and 100 horizontal intervals.

Test Conditions

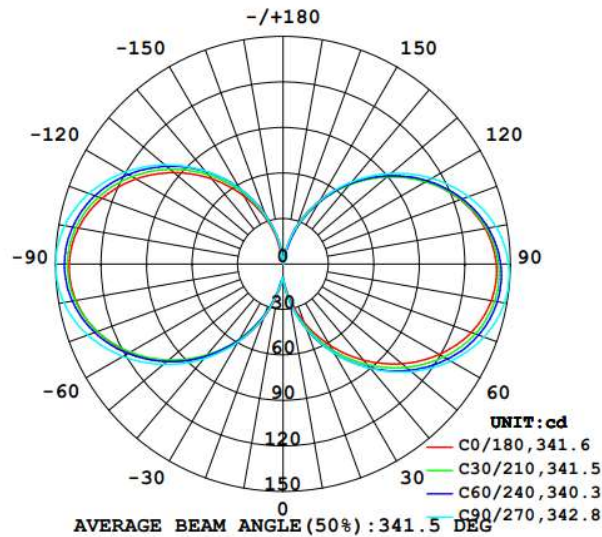
Temperature (°C)	Voltage (Vac)	Frequency (Hz)	Current (A)	Power (W)	Power Factor
25.3	120.00	60.00	0.075	8.9	0.980

Test Result

Flux(lm)	Beam Angle	Zonal Lumen Requirement(0°-60°)	SC (0°-180°)	SC (90°-270°)	Efficacy (lm/W)
1321.6	341.5	19.0%	1.2	1.22	148.5

3.3 Goniophotometer Test

Light Distribution Curve



Zonal Lumen Summary

Zone	Lumens	%Lamp	%Fixt	Zone	Lumens
0-20	9.75	N.A.	0.70	0-10	1.33
0-30	33.15	N.A.	2.50	10-20	8.41
0-40	78.50	N.A.	5.90	20-30	23.40
0-60	250.83	N.A.	19.00	30-40	45.35
0-80	523.10	N.A.	39.60	40-50	72.02
0-90	679.10	N.A.	51.40	50-60	100.31
10-90	677.76	N.A.	51.30	60-70	126.30
20-40	68.75	N.A.	5.20	70-80	145.97
20-50	140.77	N.A.	10.70	80-90	155.99
40-70	298.63	N.A.	22.60	90-100	154.61
60-80	272.28	N.A.	20.60	100-110	142.13
70-80	145.97	N.A.	11.10	110-120	120.70
80-90	155.99	N.A.	11.80	120-130	93.82
90-110	296.74	N.A.	22.50	130-140	65.54
90-120	417.44	N.A.	31.60	140-150	39.62
90-130	511.27	N.A.	38.70	150-160	18.94
90-150	616.43	N.A.	46.70	160-170	5.62
90-180	641.34	N.A.	48.60	170-180	0.36
110-180	344.60	N.A.	26.10		
0-180	1320.44	N.A.	100.00		

5.0 THD and PF Test

Model No.	PLC-9-O-840-HYB	Sample ID.	A1
Temperature (°C)	25.3	Humidity %	49

Test Method

The samples were tested according to the ANSI C82.77:2002.

The total harmonic distortion shall be measured to the 40th order.

The ambient temperature condition was maintained at 25° C ± 1° C. The sample measurements were made using a digital power meter and power supply. The sample was operated at rated voltage and was stabilized before measurement. The total harmonic distortion were calculated.

Test Results

Temperature (°C)	Voltage (Vac)	Frequency (Hz)	Current (A)	Power (W)	Power Factor	THD
25.3	120.00	60.00	0.068	8.0	0.981	21.30%
25.3	277.02	60.00	0.032	8.1	0.915	17.20%