

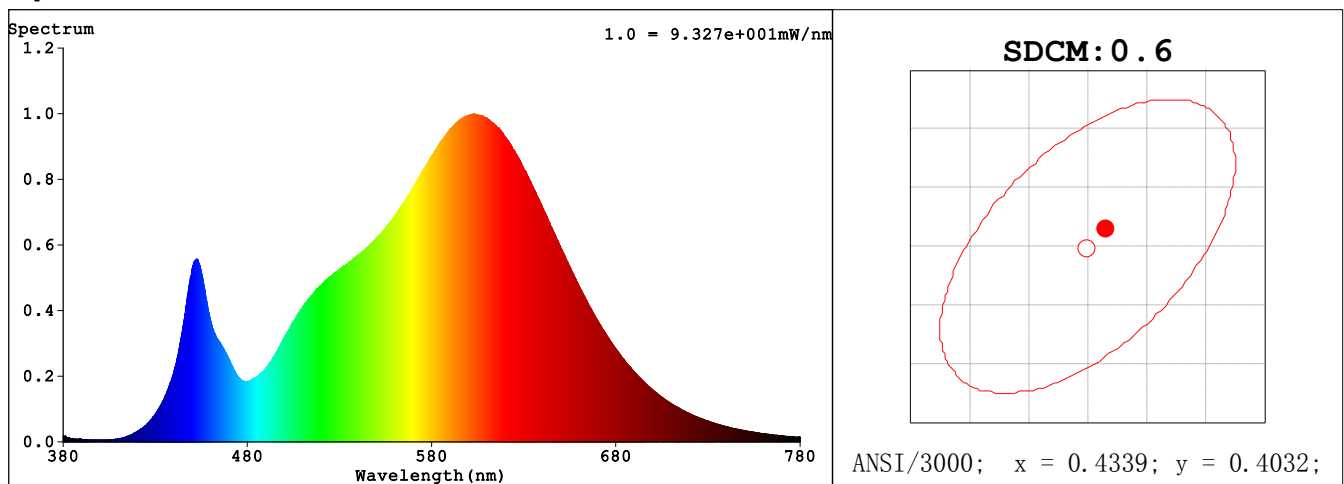
Spectrum Test Report

Sample :	Date : 2020-10-16
Specification : PS30-36-EX39-830-ND 120-277V	Sam. Status :
Sample No. : 120 1	Standard :
Manufacturer : RAB LIGHTING INC.	Instrument : HaasSuite(EVERFINE)
Assessor : damin	
Remark : ---	Test by : DAMIN
Device SN : 9#	

Test Condition

Temprature : 24.9Deg	RH : 65.0%
WL Range : 380nm-780nm	IP : 57053 (87%)
Test Mode : Fast Test	T : 50 ms
Sensitivity : High	

Spectrum



Colorimetric Parameters

Chromaticity Coordinate: $x = 0.4350$ $y = 0.4044$ / $u' = 0.2491$ $v' = 0.5212$ ($duv=4.24e-04$)

CCT= 3037K Prcp WL: Ld=582.5nm Purity=52.0%

Peak WL: Lp=603nm FWHM: =133.7nm Ratio:R=22.7% G=74.8% B=2.5%

Render Index: Ra = 83.1

EEL: 0.10308 A++ Highest

R1 =81.52 R2 =90.76 R3 =96.94 R4 =81.43 R5 =81.58 R6 =88.72 R7 =83.72

R8 =60.52 R9 =9.58 R10=78.70 R11=80.80 R12=70.02 R13=83.68 R14=98.82 R15=74.19

LEVEL:OUT WHITE:ANSI_3000K

Photometric & Radiometric Parameters

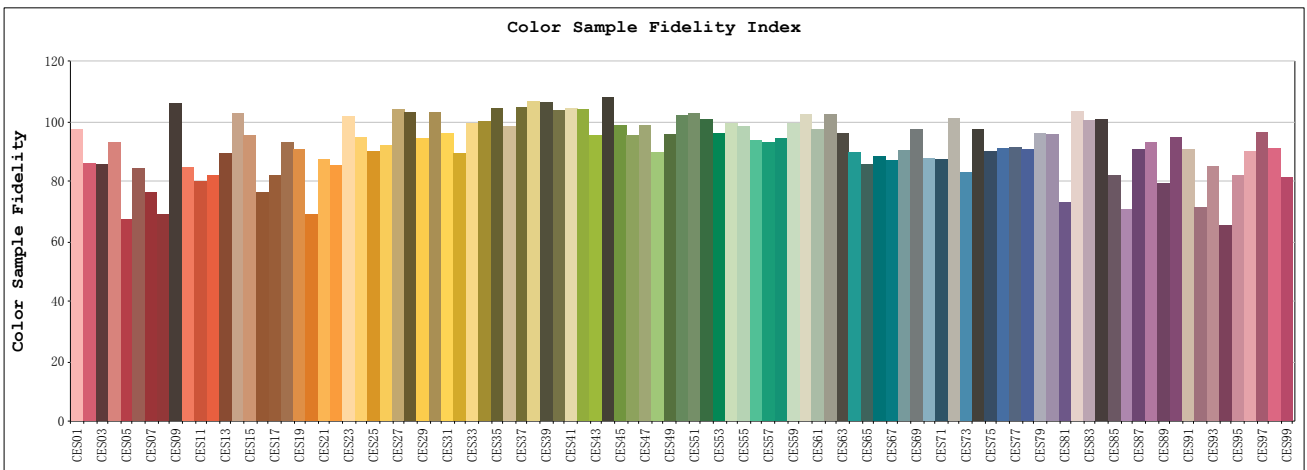
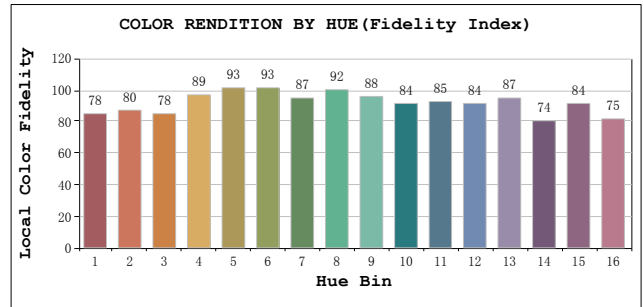
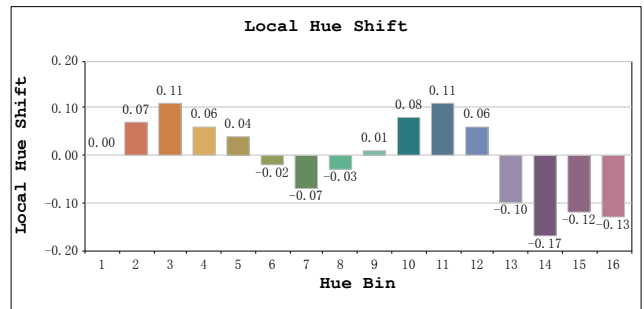
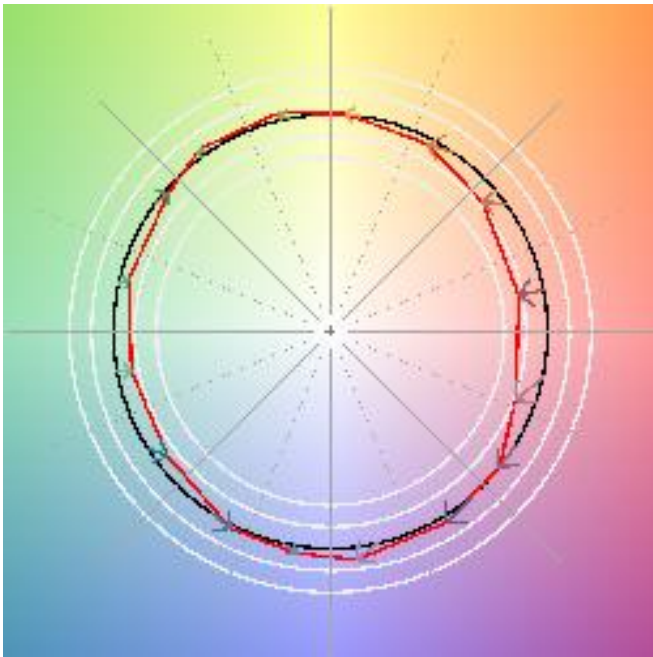
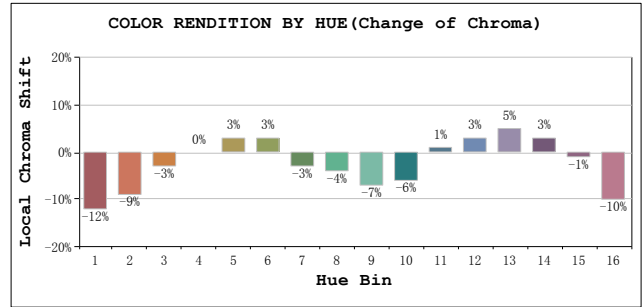
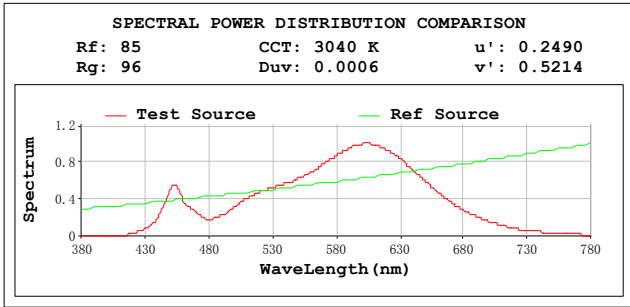
Flux = 4675.3 lm Eff. : 132.15 lm/W Fe = 14.248 W Scotopic:6325.2 S/P:1.3529

Flux of emitted photons(μ mol/s):69.122 Fluo. and blue light ratio:8.569 Fluorescent eff.:356.6

Electrical parameters

V = 119.98 V I = 0.2983 A P = 35.38 W PF = 0.9887 F=59.98 Hz

TM30



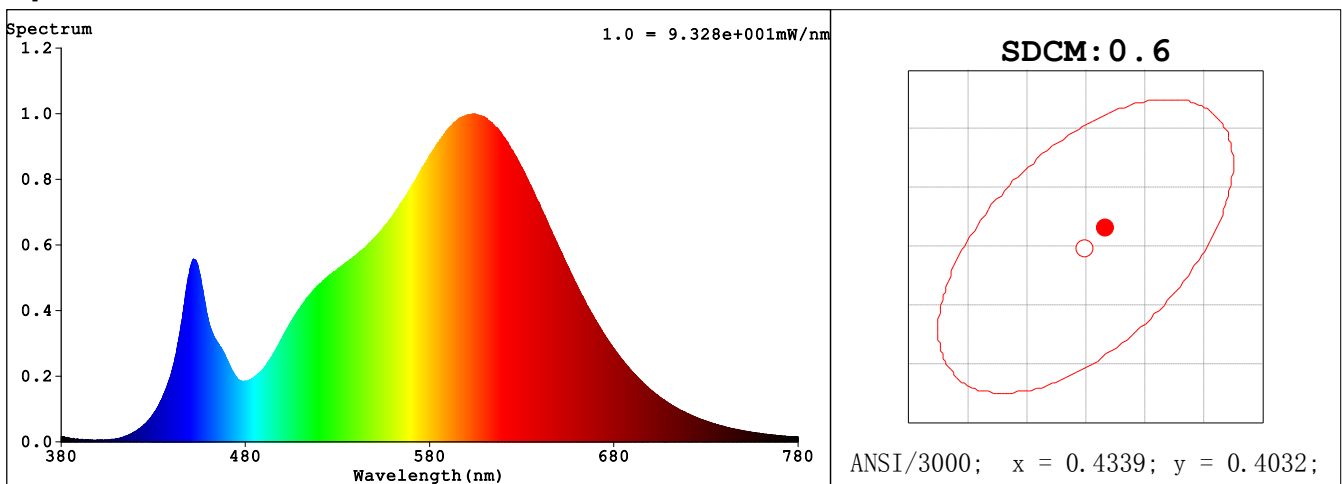
Spectrum Test Report

Sample :	Date : 2020-10-16
Specification : PS30-36-EX39-830-ND 120-277V	Sam. Status :
Sample No. : 277 1	Standard :
Manufacturer : RAB LIGHTING INC.	Instrument : HaasSuite(EVERFINE)
Assessor : damin	
Remark : ---	Test by : DAMIN
Device SN : 9#	

Test Condition

Temperature : 25.0Deg	RH : 65.0%
WL Range : 380nm-780nm	IP : 57151 (87%)
Test Mode : Fast Test	T : 50 ms
Sensitivity : High	

Spectrum



Colorimetric Parameters

Chromaticity Coordinate: $x = 0.4350$ $y = 0.4045$ / $u' = 0.2492$ $v' = 0.5213$ ($duv=4.31e-04$)
 CCT= 3036K Prcp WL: Ld=582.5nm Purity=52.0%
 Peak WL: Lp=604nm FWHM: =133.7nm Ratio:R=22.7% G=74.8% B=2.5%
 Render Index: Ra = 83.2

EEL: 0.10285 A++ Highest

R1 =81.53 R2 =90.74 R3 =96.96 R4 =81.51 R5 =81.64 R6 =88.75 R7 =83.71
 R8 =60.51 R9 =9.61 R10=78.69 R11=80.91 R12=70.08 R13=83.68 R14=98.83 R15=74.18
 LEVEL:OUT WHITE:ANSI_3000K

Photometric & Radiometric Parameters

Flux = 4677.3 lm Eff. : 132.44 lm/W Fe = 14.253 W Scotopic:6326.1 S/P:1.3525
 Flux of emitted photons($\mu\text{mol/s}$):69.152 Fluo. and blue light ratio:8.627 Fluorescent eff.:355.0

Electrical parameters

V = 276.86 V I = 0.1300 A P = 35.32 W PF = 0.9810 F=59.98 Hz

TM30

