

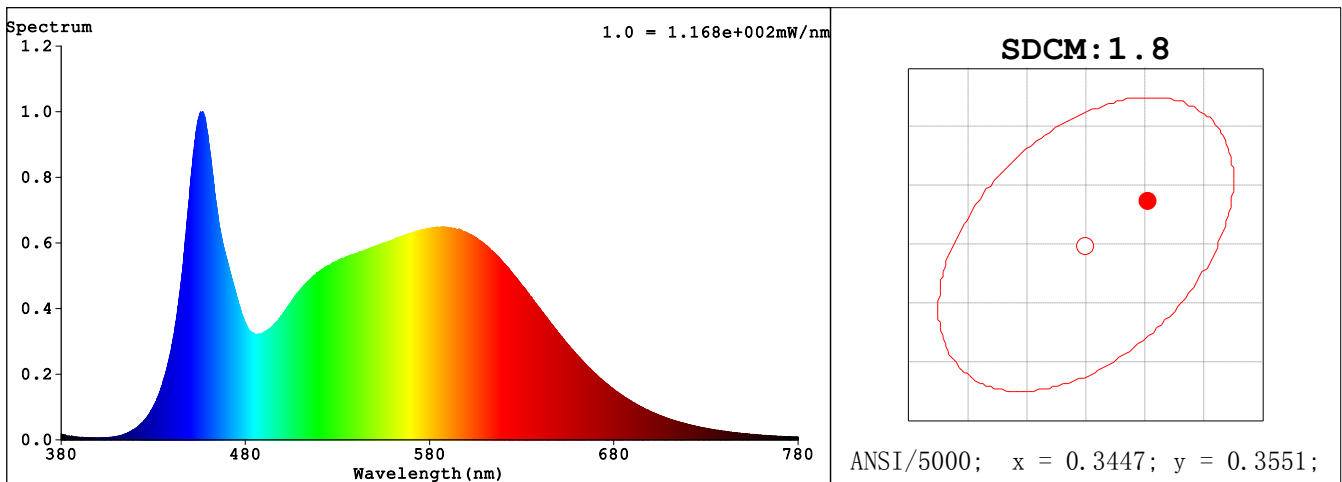
## Spectrum Test Report

Sample	:		Date	:	2020-10-16
Specification	:	PS30-36-EX39-850-ND 120-277V	Sam. Status	:	
Sample No.	:	120 1	Standard	:	
Manufacturer	:	RAB LIGHTING INC.	Instrument	:	HaasSuite(EVERFINE)
Assessor	:	damin			
Remark	:	---	Test by	:	DAMIN
Device SN	:	9#			

### Test Condition

Temperature	:	24.9Deg	RH	:	65.0%
WL Range	:	380nm-780nm	IP	:	46473 (71%)
Test Mode	:	Fast Test	T	:	50 ms
Sensitivity	:	High			

### Spectrum



### Colorimetric Parameters

Chromaticity Coordinate:  $x = 0.3477$   $y = 0.3575$  /  $u' = 0.2109$   $v' = 0.4879$  ( $duv=1.92e-03$ )

CCT= 4922K Prcp WL: Ld=571.9nm Purity=11.6%

Peak WL: Lp=457nm FWHM: =26.8nm Ratio:R=16.2% G=78.6% B=5.1%

Render Index: Ra = 85.1

EEL: 0.10030 A++ Highest

R1 =84.26 R2 =93.15 R3 =95.67 R4 =80.65 R5 =83.04 R6 =88.19 R7 =86.75

R8 =69.37 R9 =19.87 R10=81.82 R11=79.71 R12=58.81 R13=87.31 R14=98.22 R15=79.08

LEVEL:OUT WHITE:ANSI\_5000K

### Photometric & Radiometric Parameters

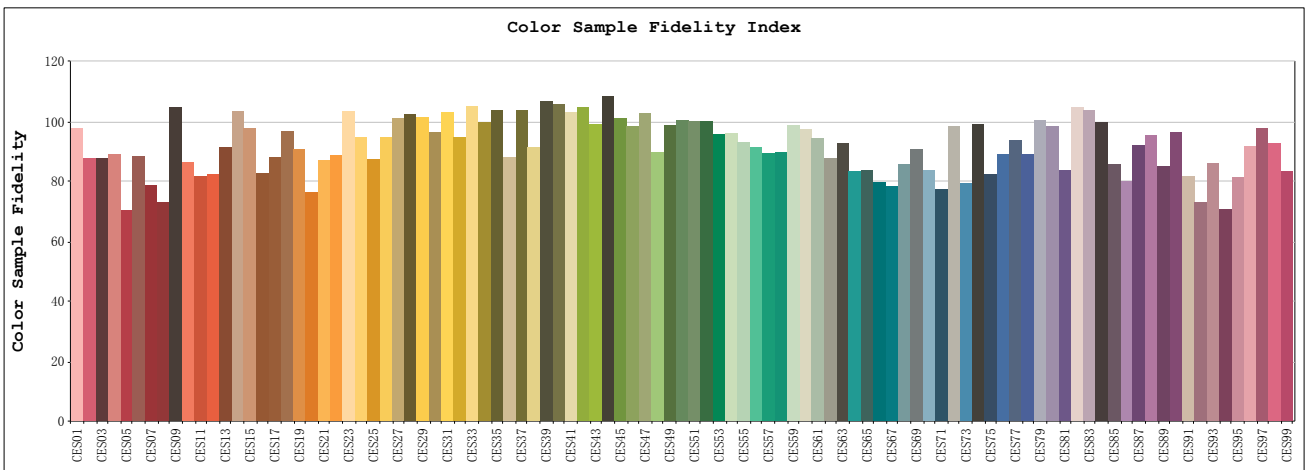
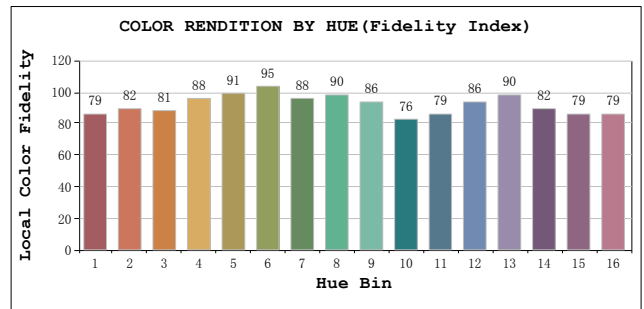
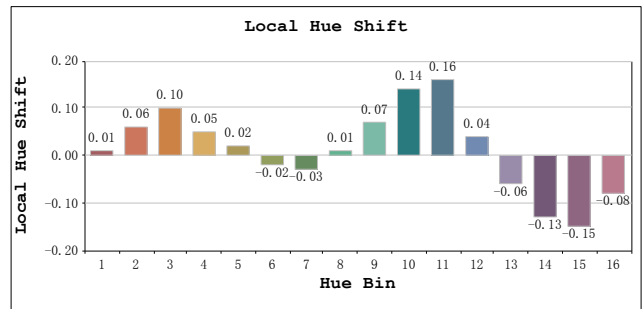
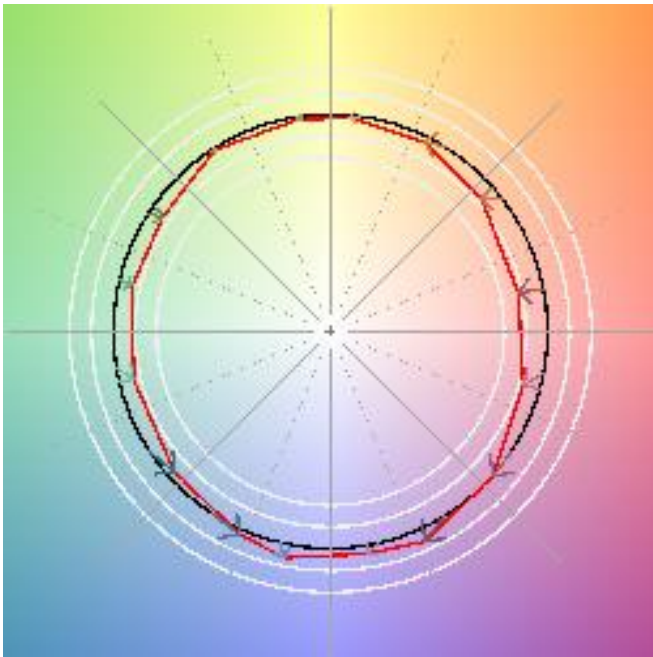
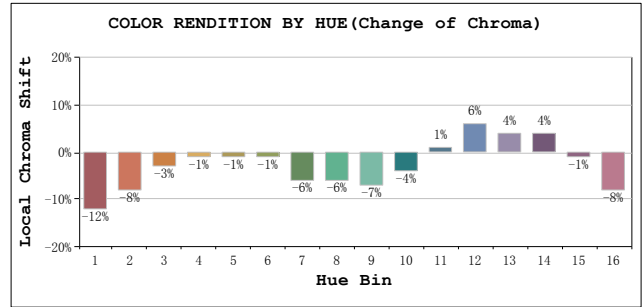
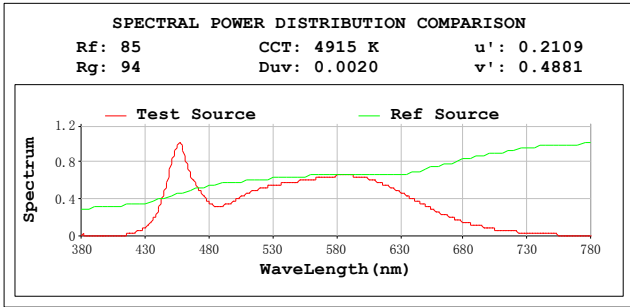
Flux = 4808.5 lm Eff. : 135.82 lm/W Fe = 15.203 W Scotopic:9633.3 S/P:2.0034

Flux of emitted photons( $\mu\text{mol/s}$ ):70.25 Fluo. and blue light ratio:3.219 Fluorescent eff.:324.1

### Electrical parameters

V = 119.99 V I = 0.2984 A P = 35.40 W PF = 0.9889 F=59.98 Hz

# TM30



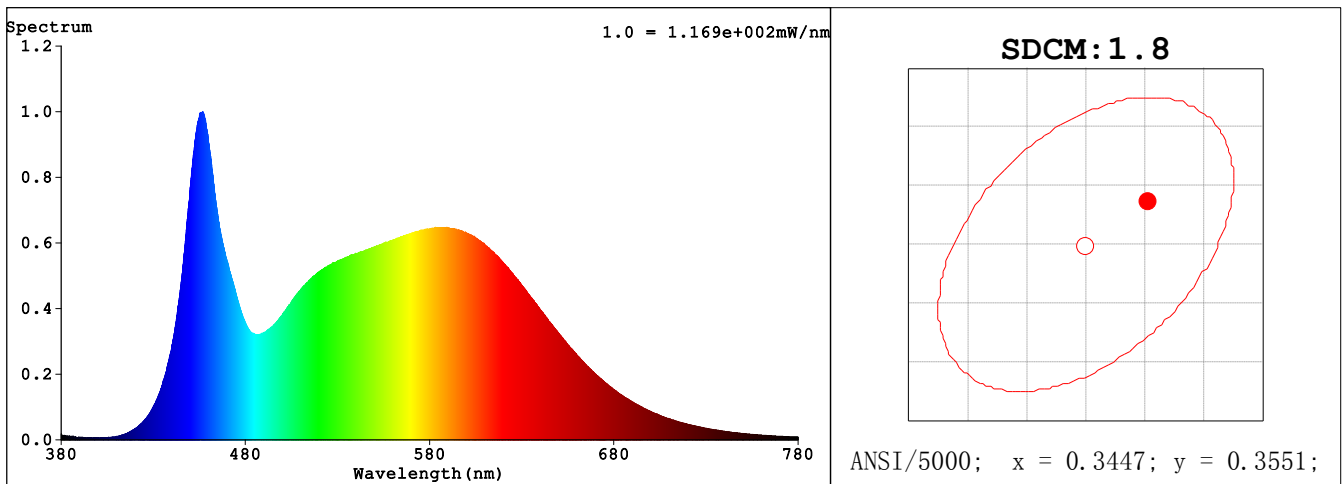
## Spectrum Test Report

Sample :	Date : 2020-10-16
Specification : PS30-36-EX39-850-ND 120-277V	Sam. Status :
Sample No. : 277 1	Standard :
Manufacturer : RAB LIGHTING INC.	Instrument : HaasSuite(EVERFINE)
Assessor : damin	
Remark : ---	Test by : DAMIN
Device SN : 9#	

### Test Condition

Temprature : 25.3Deg	RH : 65.0%
WL Range : 380nm-780nm	IP : 46446 (71%)
Test Mode : Fast Test	T : 50 ms
Sensitivity : High	

### Spectrum



### Colorimetric Parameters

Chromaticity Coordinate:  $x = 0.3477$   $y = 0.3575$  /  $u' = 0.2109$   $v' = 0.4879$  ( $duv=1.90e-03$ )  
 CCT= 4922K Prcp WL: Ld=571.9nm Purity=11.6%  
 Peak WL: Lp=457nm FWHM: =26.7nm Ratio:R=16.2% G=78.6% B=5.1%  
 Render Index: Ra = 85.2

EEL: 0.10032 A++ Highest

R1 =84.29 R2 =93.17 R3 =95.67 R4 =80.66 R5 =83.07 R6 =88.21 R7 =86.75  
 R8 =69.40 R9 =19.99 R10=81.87 R11=79.72 R12=58.83 R13=87.34 R14=98.22 R15=79.12  
 LEVEL:OUT WHITE:ANSI\_5000K

### Photometric & Radiometric Parameters

Flux = 4789.7 lm Eff. : 135.78 lm/W Fe = 15.144 W Scotopic:9596.8 S/P:2.0036  
 Flux of emitted photons( $\mu\text{mol/s}$ ):69.977 Fluo. and blue light ratio:3.240 Fluorescent eff.:322.4

### Electrical parameters

V = 276.98 V I = 0.1296 A P = 35.27 W PF = 0.9823 F=59.98 Hz

# TM30

