



# LED Emergency & Exit Solutions

**RAB**<sup>®</sup>

EMERGENCY LIGHTING - REMOTE HEADS - EXIT COMBOS - EXIT SIGNS - EMERGENCY BATTERIES

# WHY RAB?

Life safety isn't a category where "good enough" will suffice. RAB's Exit & Emergency portfolio gives distributors and contractors a complete, code-ready solution — from low-profile thermoplastic units to outdoor-rated combos and edge-lit aluminum exit signs. Universal voltage, remote capability, self diagnostics, and wet location rated when it counts; all warranted by the brand that always has your back.

**When safety depends on it, specify RAB.**

---

## TABLE OF CONTENTS

### Emergency Lighting

---

PAGE

- 3 EM34
  - 3 EM & EMR
  - 4 Emergency Remote Heads
  - 5 EMREMOTE & EMREMOTEOUT
- 

### Exit Signs

---

PAGE

- 6 EXIT34 & EXIT
- 6 ELS & ELX
- 7 EXITEDGE
- 7 EXITOUT

### Exit/Emergency Combos

---

PAGE

- 8 ECOMBO34
  - 8 ECOMOBO
  - 9 ECOMBOOUT
- 

### Emergency Battery Backup

---

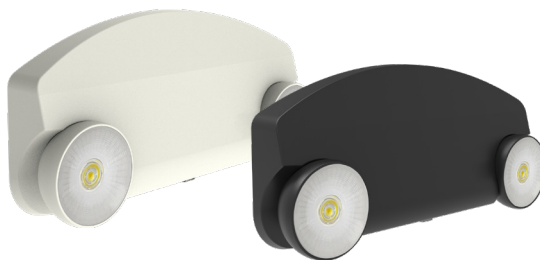
PAGE

- 9 EMB AC Emergency Batteries

# Emergency Lighting

## EM34

Low-Profile, Thermoplastic Emergency Light



Catalog Number	Finish	Remote Capable	Self Diagnostic	Input Power	Lumens (lm)	Color Temperature	Input Voltage (V)	Battery Voltage	Maximum Output Wattage (W)
EM34	White	No	No	1.8W	160 lm	6500K	120-277V	3.6V	2W
EM34-R		Yes							4W
EM34-B	Black	No							2W
EM34-R-B		Yes							4W



## EM & EMR

Thermoplastic, High-Output LED Heads, Round or Square



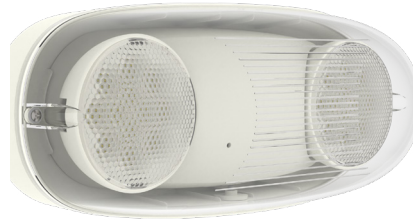
Catalog Number	Head Shape	Finish	Remote Head	Input Voltage (V)	Lumens (lm)	Input Power	Input Current @120V (A)	Input Current @277V (A)	Maximum Output Wattage (W)	Remote Capacity (W)	Battery Voltage
EM	Square	White	No	120-277V	200 lm	1.2W	0.02A	0.01A	2W	-	3.6V
EM-R			Yes			2W	0.025A	0.018A	4W	2W	
EM-B		Black	No			1.5W	0.02A	0.01A	2W	-	
EM-R-B			Yes			2W	0.025A	0.018A	4W	2W	
EM-R	Round	White	No			2W	0.02A	0.01A	2W	-	
EMR-R			Yes			2W	0.025A	0.018A	4W	2W	



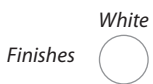
# Emergency Lighting

## EMOUT

Emergency Unit, Wet Location Rated



Catalog Number	Finish	Remote Head	Self Diagnostic	Input Power	Input Current @ 120V (A)	Input Current @ 277V (A)	Lumens (lm)	Color Temperature	Input Voltage (V)	Battery Voltage	Maximum Output Wattage (W)
EMOUT	White	No	No	2.4W	0.025A	0.015A	400 lm	120-277V	6500K	3.6V	2.4W



## DROP Mini Wall Pack

Teardrop Mini-Wall Pack, Field-Adjustable CCT, Dusk-to-Dawn, EM Back Up, 120-277V



Catalog Number	Finish	Input Wattage	Lumens (lm)	Efficacy (lm/W)	Dim Type	Input Voltage	Color Temperature	Environment	Emergency Wattage	Emergency Lumens
DROP	Bronze	15W	1740/1814/1775	130/138/133	0-10V	120-277	Field adjustable via dip switch 3500/4000/5000K	Wet	5W	700 lm
DROPB	Black									
DROPW	White									
DROP/E	Bronze	18.5W								
DROPB/E	Black									
DROPW/E	White									



# Emergency Lighting

## EMREMOTE & EMREMOTEOUT

Indoor & Outdoor Rated Emergency Lighting Remote Heads



Catalog Number	Finish	No. of Heads	Input Power	Lumens (lm)	Color Temperature	Input Voltage (V)	IP Rating	Battery Voltage
EREMOTE-1	White	Remote Single Head	1.2W MAX.	90	6500K	3.6-15V	IP20	3.6V-15V
EREMOTE	White	Remote Dual Head	2.4W MAX.	180				
EREMOTE-1B	Black	Remote Single Head	1.2W MAX.	90				
EREMOTE-B	Black	Remote Dual Head	2.4W MAX.	180				
EREMOTEOUT-1	Gray	Remote Single Head	1.2W MAX.	90			IP65	
EREMOTEOUT	Gray	Remote Dual Head	2.4W MAX.	180				
EREMOTEOUT-1B	Black	Remote Single Head	1.2W MAX.	90				
EREMOTEOUT-B	Black	Remote Dual Head	2.4W MAX.	180				
EREMOTEOUT-1W	White	Remote Single Head	1.2W MAX.	90				
EREMOTEOUT-W	White	Remote Dual Head	2.4W MAX.	180				



# Exit Signs

## EXIT/EXIT34

Color Switching, Thermoplastic Exit



Catalog Number	Finish	Battery Back Up	Remote Head	Letter Color	Faces	Input Voltage	Wattage	Battery Voltage	Input Current @120V (A)	Input Current @277V (A)	Maximum Output Wattage (W)
EXIT-R	White	Yes	Yes	Red / Green Switchable	Universal Single/ Double Face	120-277V	2W	3.6V	0.035A	0.015A	4W
EXIT34-RG		AC Only	No				-				
EXIT34-RG/E		Yes					-				
EXIT34-RG/E-B	Black										-

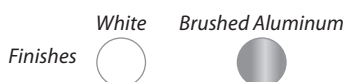


## ELS/ELX

Thermoplastic Red/Green Selectable or NYC Compliant Red Lettering Surface, Wall, Ceiling, or Recessed Mounting



Catalog Number	Housing Material	Finish	Letter Color	Faces	Panel	Mounting	Voltage
ELS	Thermoplastic	White	Red/Green Selectable via dipswitch	Single Face	Clear Acrylic	Surface - Wall, Ceiling, & End Mount	120-277V
ELS-MP				Double Face	Mirror Panel		
ELX				Single Face	Clear Acrylic	Surface - Wall, Ceiling, & End Mount Recessed - Hardware Included	
ELX-MP				Double Face	Mirror Panel		
ELSNYC	Aluminum	Brushed Aluminum	Red	Single Face	Clear Acrylic	Surface - Wall, Ceiling, & End Mount	
ELSNYC-MP				Double Face	Mirror Panel		
ELXNYC				Single Face	Clear Acrylic	Surface - Wall, Ceiling, & End Mount Recessed - Hardware Included	
ELXNYC-MP				Double Face	Mirror Panel		



# Exit Signs

## EXITEDGE

Aluminum Edge-Lit Exit Sign



Catalog Number	Housing Finish	Lens Panel	Face Configuration	Lettering	Input Voltage	Wattage	Battery Voltage	Input Current @120V (A)	Input Current @277V (A)
EXITEDGE-1/E	Brushed Aluminum	Clear	Single face	Red	120/277 Dual Voltage	3.5	3.6V	0.027	0.013A
EXITEDGE-1G/E	Brushed Aluminum			Green					
EXITEDGE-1W/E	White Housing			Red					
EXITEDGE-1GW/E	White Housing			Green					
EXITEDGE-MP/E	Brushed Aluminum	Mirror	Double face	Red					
EXITEDGE-GMP/E	Brushed Aluminum			Green					
EXITEDGE-MPW/E	White Housing			Red					
EXITEDGE-GMPW/E	White Housing			Green					
EXITEDGE-WP/E	Brushed Aluminum	White		Red					
EXITEDGE-WPW/E	White Housing			Red					

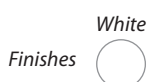


## EXITOUT

Outdoor Rated Exit Signs Available in Red or Green with Battery Backup Options.



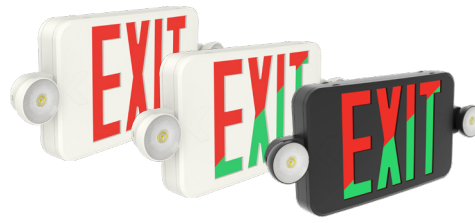
Catalog Number	Finish	Remote Head	Self Diagnostic	Letter Color	Input Power	Input Current @ 120V (A)	Input Current @ 277V (A)	Input Voltage (V)	Battery Voltage	Maximum Output Wattage (W)
EXITOUT	White	No	No	Red / Green Switchable	3.5W	0.026A	0.015A	120-277V	3.6V	0.8W
EXITOUT-G		Yes								



# Exit Combos

## ECOMBO34

Color Switching, Thermoplastic Exit Combo



Catalog Number	Finish	Remote Head	Letter Color	Input Power	Lumens (lm)	Color Temperature	Input Voltage (V)	Battery Voltage	Maximum Output Wattage (W)
ECOMBO34	White	No	Red	1.8W	160 lm	6500K	120-277V	3.6V	2W
ECOMBO34-R		Yes							4W
ECOMBO34-RG		No	Red / Green Switchable						2W
ECOMBO34-RGR		Yes							4W
ECOMBO34-RG-B	Black	No	Red / Green Switchable						2W
ECOMBO34-RGR-B		Yes							4W



## ECOMBO

Color Switching, Thermoplastic Exit Combo



Catalog Number	Finish	Remote Head	Self Diagnostic	Letter Color	Input Power	Input Current @ 120V (A)	Input Current @ 277V (A)	Lumens (lm)	Color Temperature	Input Voltage (V)	Battery Voltage
ECOMBO	White	No	No	Red / Green Switchable	3.5W	0.031A	0.016A	180 lm	6500K	120-277V	3.6V
ECOMBO-R		Yes			4W	0.032A	0.017A	181 lm			
ECOMBO-S		No	Yes		2W	0.03A	-	182 lm			
ECOMBO-RS		Yes			2.8W	0.045A	-	183 lm			
ECOMBO-B	Black	No	No		3.5W	0.031A	0.016A	184 lm			
ECOMBO-R-B		Yes			4W	0.032A	0.017A	185 lm			



# Exit Combos

## ECOMBOOUT

Exit Combo, Wet Location Rated



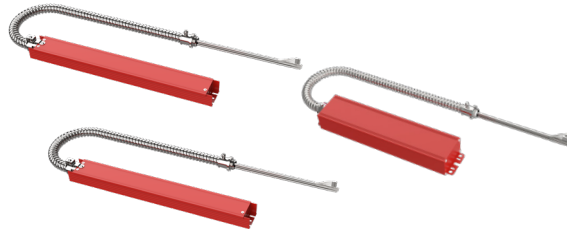
Catalog Number	Finish	Remote Head	Input Power	Input Current @ 120V (A)	Lumens (lm)	Color Temperature	Input Voltage (V)	Battery Voltage	Maximum Output Wattage (W)
ECOMBOOUT	White	No	2.9W	2.9W	200lm	6500K	120-277V	3.6V	2.4W

Finishes White



## EMB

Emergency Backup Batteries



Catalog Number	Input Power	Emergency Wattage	Input Voltage	Input Current	Output Voltage	Luminaire Power	Ambient Temp.	Battery	Recharge Time	Emergency Time	Dimming	Warranty
EMB-9	8W	9W	120-347V	80mA	145Vdc	9-80W LED lamp with 0-10V dimming or LED lamp less than 9W without 0-10V dimming	32-122°F (0-50°C)	Lithium-ion 14.8V/1800mAh	24 hrs	90 min.	0-10V	5-Year Limited
EMB-15	8W	15W		80mA		15-120W LED lamp with 0-10V dimming or LED lamp less than 15W without 0-10V dimming						
EMB-25	10W	10W		150mA		25-200W LED lamp with 0-10V dimming or LED lamp less than 25W without 0-10V dimming						

