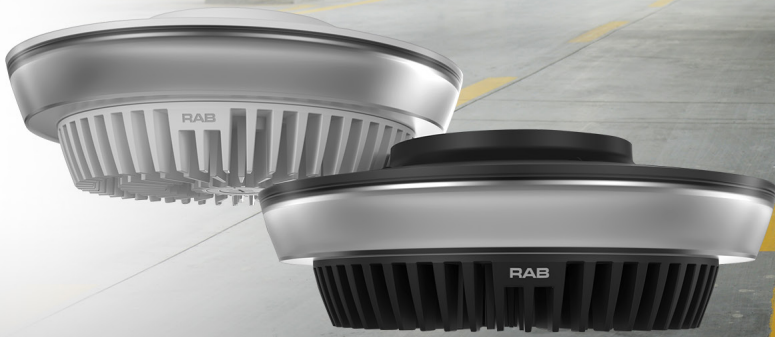


RAB®

PARK34

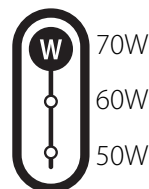
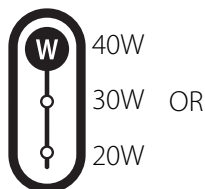
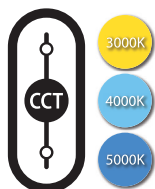


Economy garage lighting
now with field adjustability!

PARK34— More versatility packed into the same small design.

We've multiplied your options.

The PARK34 now boasts three field-adjustable wattages and color temperatures and is available in both bronze and white. And if that's not enough added versatility, you can also now choose between 120V and 277V operation!





100,000-HOUR
LED LIFESPAN



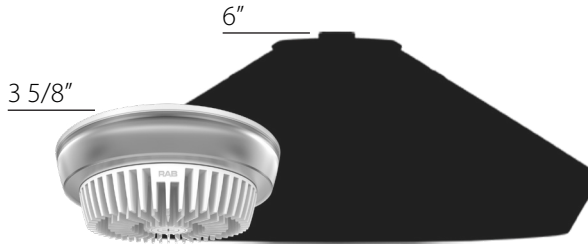
5-YEAR
LIMITED
WARRANTY

RAB's warranty is
subject to all terms
and conditions found at
rablighting.com/warranty



The same super-low profile.

At just over 3.5" in height, the PARK34 gives you as much clearance room as possible, helping to avoid damaging encounters with SUVs and roof racks.



Small but mighty.

PARK34 is built to withstand tough treatment in garages. Its polycarbonate construction is impact resistant, to make sure these fixtures stick around for the long haul.



Control options.

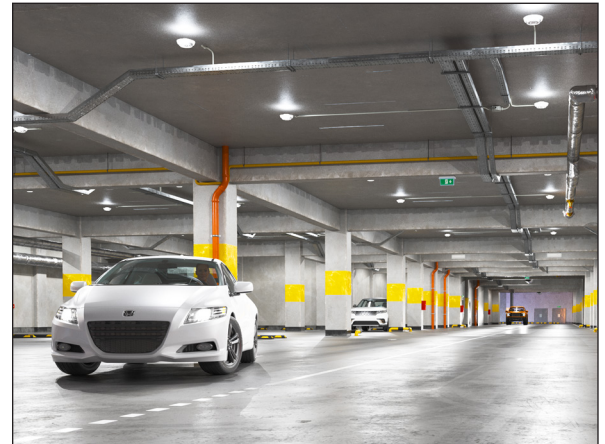
The PARK34 includes 0-10V dimming and a built-in port that's compatible with standard and Lightcloud Blue-ready PIR and microwave (MVS) sensors. It is also offered with emergency battery backup.



MSR1 remote for use with non-Lightcloud Blue sensors.

Brighter, safer lighting distribution.

Precision-engineered optics deliver over 10% uplift, eliminating the dark spots known as the "cave effect" and creating smooth, even light distribution.



Lightcloud® Blue enabled.

Available with factory-installed Lightcloud Blue compatibility, for use with our wireless, Bluetooth mesh control system.

Lightcloud®



Ordering Matrix

Product Family	Wattage	Color Temp	Finish	Driver Option	Options
PARK34	40 70	Blank 3000/4000/5000K CCT Adjustable	Blank W	Blank 120V/277V 0-10V dimming	Blank /E No option Battery backup