

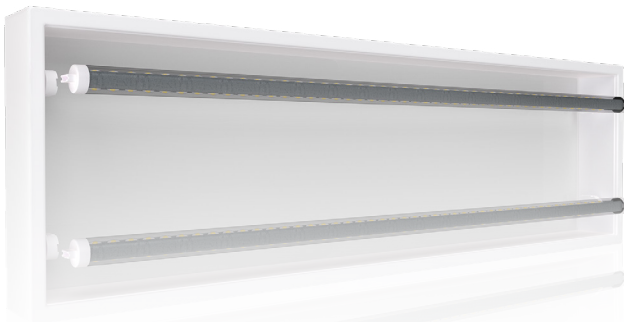
# RAB®

# SIGN TUBES



Sign lighting that's built to impress.  
Replace outdated fluorescents with LED.

Built to perform and impress.



RAB's double-ended sign tubes are ideal replacements for traditional T12HO and T8HO fluorescent tubes used in sign applications. They fit in all existing sign fixture sockets.. simply bypass the ballast and you're good to go!



All sign replacement tubes are made of robust plastic and aluminum, with LEDs on both sides that provide 360° omnidirectional light output. The optics are specifically designed to diffuse light and deliver smooth, even distribution while eliminating harsh hot spots.



50,000 HRS

50,000-HOUR LED LIFESPAN



5-YEAR

NO-COMPROMISE WARRANTY

RAB's warranty is subject to all terms and conditions found at [rablighting.com/warranty](http://rablighting.com/warranty)

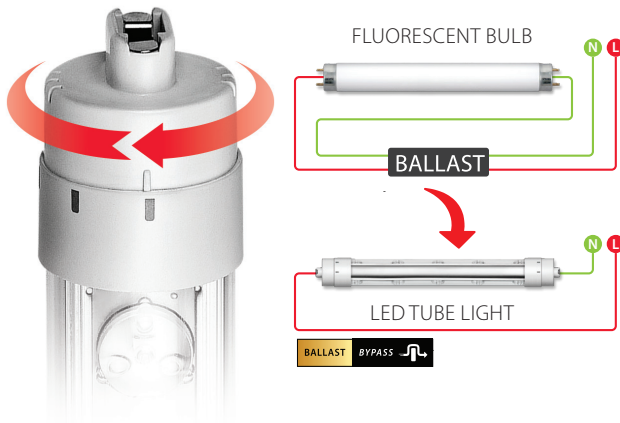
## Big or small, we've got it.

Retrofit sign tubes come in various lengths from 1.5 to 10 feet. All models come in a CCT of 6500K in order to deliver the optimal, bright, daylight color that's preferred for sign installations.



## Fix it and forget it.

Double-ended, ballast bypass installation ensures that you won't need to worry about spending the time and money to replace a failing ballast. Rotatable R17d endcaps also allow the installer to direct light where it's needed.



## We know how to accessorize.

Two accessory kits are available that include cables with magnetic hooks to support the installation of tubes that are 8+ feet long, helping to prevent any annoying sagging within the sign.



## Ordering Matrix

Product Family	Wattage	Length	CRI/Color Temp	Wiring Method	Installation
T8			865		BYP
7	7W, 900 lm	18P2S 18" Plastic 2 Sided	865 80 CRI	DE 80 CRI	BYP Bypass
9	9W, 1200 lm	24P2S 24" Plastic 2 Sided			
15	15W, 1950 lm	36P2S 36" Plastic 2 Sided			
19.5	19.5W, 2600 lm	48P2S 48" Plastic 2 Sided			
24	24W, 3250 lm	60P2S 60" Plastic 2 Sided			
29.5	29.5W, 3900 lm	72P2S 72" Plastic 2 Sided			
35	35W, 4550 lm	84P2S 84" Plastic 2 Sided			
39.5	39.5W, 5200 lm	96P2S 96" Plastic 2 Sided			
43	43W, 5850 lm	108P2S 108" Plastic 2 Sided			
		120P2S 120" Plastic 2 Sided			

