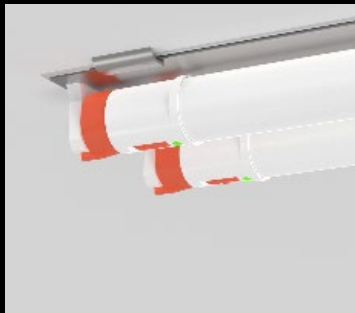
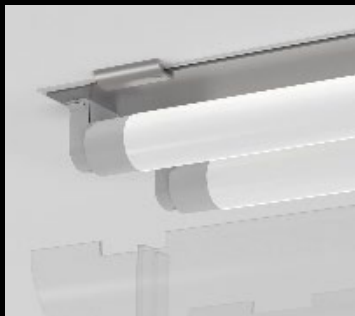
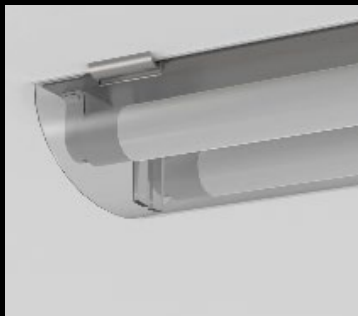


RAB®

T10-EM



Field-adjustable, all-in-one LED tube.
Stays lit when it matters.



UL 924.

The T10EM is a true, UL 924-certified LED T10 tube that's hardwired to mains power 24/7. Its design includes an integrated, rechargeable emergency battery to assure that the installation can't be accidentally removed or turned off.



FEATURE PAGE



50K-HOUR
LED LIFESPAN



NO-COMPROMISE
WARRANTY

5-YEAR
NO COMPROMISE
WARRANTY

RAB's warranty is
subject to all terms
and conditions found at
rablighting.com/warranty

Wiring made easy.

The integrated driver on this UL Type B lamp enables ballast bypass so that you can wire directly to line voltage without worrying about ballast compatibility.



Ultimate emergency flexibility.

RAB's new T10EM tube is designed as an all-in-one, general-purpose lighting and emergency back up solution. Perfect for any application where emergency back up is required, no matter the fixture size.

2 ft



17W
Replacement
up to 1200
lumens

3 ft



24W
Replacement
up to 1600
lumens

4 ft

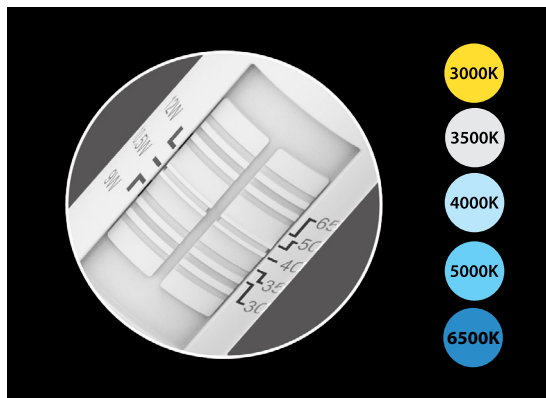


32W
Replacement
up to 2200
lumens



Status indication and testing.

A manual testing switch is included with the T10EM to make routine testing a breeze, and a light indicator next to the on/off switch will be solid red when battery is charging and solid green when the battery is fully charged. Emergency battery can last for a minimum of 90 minutes.



Field-adjustable control.

Boasting 3 selectable wattages and 5 CCTs, the T10EM is designed for 120-277V use.

Built to last.

Designed with durable, shatterproof polycarbonate, the T10EM's rugged construction is NSF certified and won't discolor over time.



Ordering Matrix

Product Family	Length/Wattage	Material	CRI/Color Temp	Wiring Method	Installation Type
T10EM	-				
	24 2 ft, 9/8/7W 36 3 ft, 12/10/9W 48 4 ft, 16/14/12W	Blank Plastic	Blank 80 CRI 3000/3500/4000/5000/6500K	Blank Single-Ended	Blank Ballast Bypass, Type B