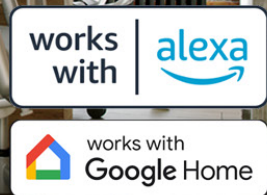
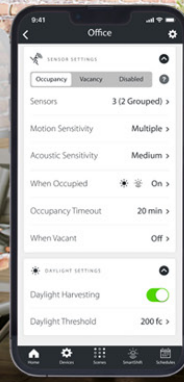
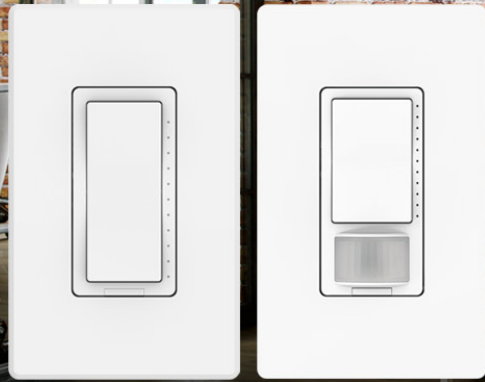


RAB

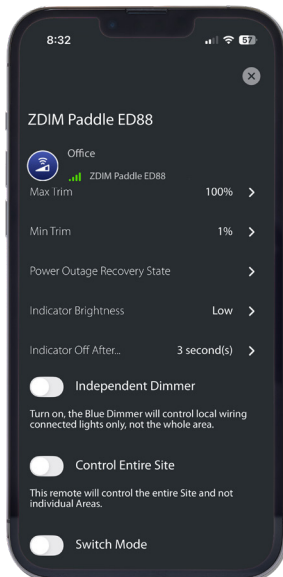


Smart control for commercial spaces.

ZDIM—Bluetooth® mesh wireless network lighting control.

Your control, your choice.

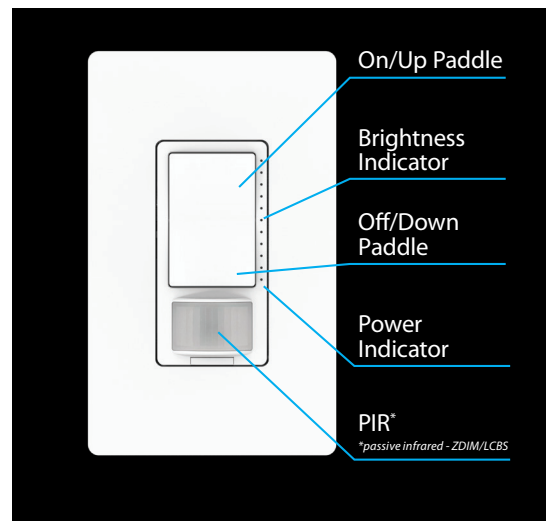
Using the Lightcloud Blue mobile app, customers can use the ZDIM as a dimmer or as a traditional paddle switch for basic ON/OFF commands. Control a single Area of lights or all the lights in a Site with a single button.



Wireless integration.

Control up to 600 Lightcloud Blue lights, providing flexibility and ease of integration into your 120-277V system, no load required.

- Single press to turn on/off
- Press and hold to fade lights on/off to desired brightness
- Double press to turn lights on/off at their highest or lowest brightness level





UL 60730 LISTED



RAB's warranty is subject to all terms and conditions found at rablighting.com/warranty

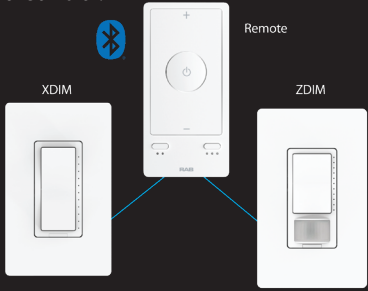
Sensing options.

The ZDIM is available with an integrated, passive infrared (PIR) occupancy and daylight sensor, providing advanced automation for your lighting needs. The ZDIM sensor is fully configurable through the Lightcloud Blue app, enabling precise control and customization.



3-way in a new way.

The ZDIM can wirelessly communicate with any other Lightcloud Blue ZDIM, XDIM, or Remote. Easily mix and match the ZDIM with any other Lightcloud Blue dimmers or remotes for added flexibility and control.



Voice control and remote access.

Control your lights from anywhere with Alexa and Google Home. (Nano required, sold separately.)



Need battery power or integrated load control?

Explore our other families of switches and remotes to find the perfect fit for your needs! [Learn more](#)

| Switches & Remotes Product Selector Guide | | | | | | | RAB |
|---|--|-------------------|--|-------------------|-----------------------------|------------------|-----|
| Product | Wired Switches | | | Wireless Switches | | Remote | |
| | XDIM/LCB | XDIM/D10/LCB | XDIM/LCBS | ZDIM/LCB | ZDIM/LCBS | LCBLUEREMOTE/W | |
| | | | | | | | |
| Input Voltage | 120V | 120-277V | 120V | 120-277V | 120-277V | Battery Powered | |
| Neutral Wire | Optional | Required | Optional | Required | Required | — | |
| Load Capacity | LED/CFL: 300W INC/HAL/ELV: 500W MLV: 400VA | 10A@120V, 5A@277V | LED/CFL: 300W INC/HAL/ELV: 500W MLV: 400VA | — | — | — | |
| Sensor | — | — | Passive Infrared & Daylight | — | Passive Infrared & Daylight | — | |
| Button Controls | On/Off, Dim | | | | | On/Off, Dim, CCT | |

Ordering Matrix

| Family | Key Type | | Voltage | Color | | Options |
|--------|----------|--------|---------|----------|-------|---|
| ZDIM | Blank | Paddle | Blank | 120-277V | Blank | White |
| | | | | | | /LCB /LCBS |
| | | | | | | Lightcloud Blue Lightcloud Blue w/PIR Sensor |