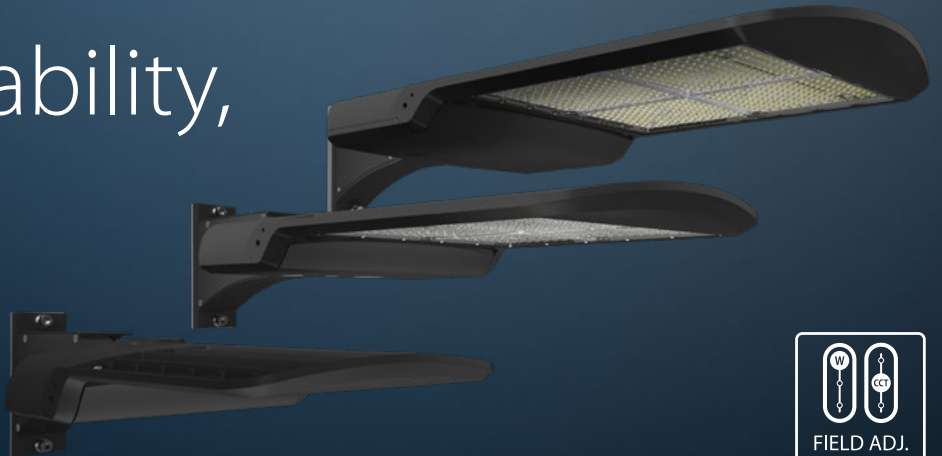


# RAB

## A17

More sizes,  
more adjustability,  
more colors!

A17 economy area  
lights are now  
so much MORE.



### The broadest selection out there.

Available from 50W through 480W models, and with four IES distributions and numerous control options, the A17 gives you the right light for the right application, all without breaking the budget.

### 7 Lumen packages.

The A17 is available in everything from 7,000 lumens to up to 76,300 lumens, while leading competitors only offer up to 5 lumen packages.



### Consistently high efficacy.

Not only does the A17 offer an ultra-high efficacy of up to 175 lm/W, but it delivers high efficacy throughout its entire portfolio.



### Mounting flexibility.

With several mounting options available, the A17 can be used throughout various areas for one unified look: parking lots, building façades, adjacent walkways, etc.



Comes standard with  
Universal Pole Mount



Wall Mount



Slipfitter



Adjustable Universal  
Pole Mount



Roadway Arm

#### OPTIONAL MOUNTING ACCESSORIES



FEATURE PAGE



100,000 HOUR  
LED LIFESPAN



IP RATING



120-277V



480V



0-10V



CERTIFIED



PREMIUM



WARRANTY

5-YEAR  
LIMITED  
WARRANTY

RAB's warranty is  
subject to all terms  
and conditions found at  
[rablighting.com/warranty](http://rablighting.com/warranty)

## 3-Way field adjustability.

The XFU models of the A17 have three selectable features: 3 selectable wattages, 3 selectable color temperatures, and anon/off twistlock photocell, giving you 18 SKUs in one area light.



## Control accessories.

All A17 models are available with various control options and accessories to help qualify for additional utility rebates.



\* Remote control required for managing settings of the microwave sensor (A17 with MVS sensor only).

## Available with smart controls.

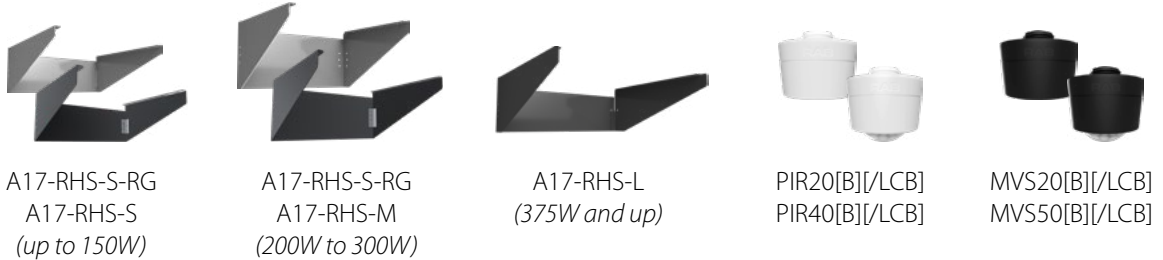
The A17 is available with integrated control options, with or without the need of a Gateway. Lightcloud Blue options offer integrated occupancy and daylight sensing which can be configured using the mobile app.

**Passive Infrared Sensors:** PIR20[B]/LCB, PIR40[B]/LCB  
**Microwave Sensors:** MVS50[B]/LCB, MVS20[B]/LCB

Lightcloud®



## Accessories.



A17-RHS-S-RG  
A17-RHS-S  
(up to 150W)

A17-RHS-S-RG  
A17-RHS-M  
(200W to 300W)

A17-RHS-L  
(375W and up)

PIR20[B]/LCB  
PIR40[B]/LCB

MVS20[B]/LCB  
MVS50[B]/LCB

## Ordering Matrix

Family	Distribution*	Wattage	Mounting	Color Temp	Finish	Driver	Options
A17	3T Type III 4T Type IV 5T Type V	70 70/60/50W 100 100/80/60W 150 150/120/100W 200 200/180/160W 300 300/240/200W 375 375/300/240W 480 480/400/320W	Blank Universal Pole Mount SF Slipfitter (150W only)	Blank 3000/4000/5000K CCT Adjustable	Finish Bronze	Blank 120-277V, 0-10V Dimming 480V, 0-10V Dimming /480	Blank No Option /3PRS 3-Pin Receptacle & Shorting Cap /7PRS 7-Pin Receptacle & Shorting Cap /MVS Microwave Motion Sensor /LCBS Lightcloud Blue® PIR Sensor /LCBS/MVS Lightcloud Blue® MVS Sensor

\*Type II distribution available as special order.

Family	Distribution	Wattage	Color Temp	Mounting	Finish	Driver	Options
A17XFU	Blank Type III	150 150/120/100W 300 300/240/200W	Blank 3000/4000/5000K CCT Adjustable	Blank Adjustable Universal Pole Mount	Blank Bronze W White B Black RG Roadway Gray	Blank 120-277V	Blank 7-Pin Receptacle & Shorting Cap 3-Pin Twistlock Photocell Included /LC Lightcloud® Controller /LCBS Lightcloud Blue® PIR Sensor /LCBS/MVS Lightcloud Blue® MVS Sensor