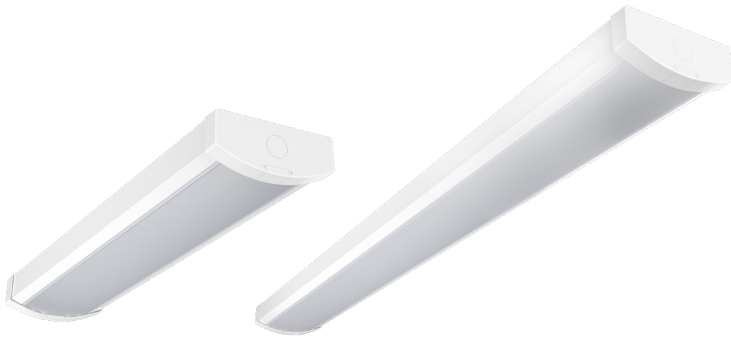


GUS17 Field-Adjustable Wrap



GUS17-2

GUS17-4

PROJECT: _____

DATE: _____

TYPE: _____

PREPARED BY: _____



KEY FEATURES

- Available models with selectable wattages:
2 Ft: (25/20/15W)
4 Ft: (50/40/30W)
- Field-adjustable CCT: 5000/4000/3500K
- Available with **smart controls**
- UL Listed for **damp** locations
- **0-10V** dimming
- 5-Year, limited warranty

Field-Adjustable, LED Wrap



0-10V



50,000 HOURS



EASY INSTALL



POWER ADJUSTABLE



FIELD ADJUSTABLE



DAMP RATED

TECHNICAL SPECIFICATIONS

COMPLIANCE

UL Listed

Suitable for damp locations

IESNA LM-79 & LM-80 Testing

RAB LED luminaires and LED components have been tested by an independent laboratory in accordance with IESNA LM-79 and LM-80

DLC Listed

This product is on the Design Lights Consortium (DLC) Qualified Products List and is eligible for rebates from DLC Member Utilities. Designed to meet DLC 5.1 requirements.

CATALOG#	DLC ID
GUS17-2	S-TXS13W
GUS17-4	S-Y281AB(Direct Linear Ambient Luminaires) S-OZBJQS (Low-Bay Luminaires)

LED CHARACTERISTICS

LEDs

Long-life, high-efficacy, discrete, surface-mount LEDs

Color Consistency

4-step MacAdam Ellipse binning to achieve consistent fixture-to-fixture color

Color Uniformity

RAB's range of Correlated Color Temperature follows the guidelines of the American National Standard for Specifications for the Chromaticity of Solid State Lighting (SSL) Products, ANSI C78.377-2017.

CONSTRUCTION

Cold Weather Starting

The minimum starting temperature is -20°C (-4°F)

Cold Weather Starting for battery back-up

The minimum starting temperature is 0°C (32°F)

Maximum Ambient Temperature

Suitable for use in up to 45°C (113°F)

Maximum Ambient Temperature for battery back-up

Suitable for use in up to 50°C (122°F)

Mounting

Surface mounting standard. GUS17 VHOOK and GUS17 JOIN KIT ordered separately.

Housing

Color coated steel sheets

Lens

Polycarbonate

Finish

Formulated for high durability and long-lasting color

Green Technology

Mercury and UV free. RoHs-compliant components.

GUS17 Field-Adjustable Wrap

TECHNICAL SPECIFICATIONS

ELECTRICAL

Drivers:

Constant Current, Class 2, Class P, 120-277V, 50/60 Hz,

GUS17-2 25W: 120V: 0.21A, 208V: 0.12A, 240V: 0.11A, 277V: 0.1A

GUS17-2 20W: 120V: 0.17A, 208V: 0.1A, 240V: 0.09A, 277V: 0.08A

GUS17-2 15W: 120V: 0.13A, 208V: 0.08A, 240V: 0.07A, 277V: 0.06A

GUS17-4 50W: 120V: 0.42A, 208V: 0.25A, 240V: 0.22A, 277V: 0.19A

GUS17-4 40W: 120V: 0.34A, 208V: 0.2A, 240V: 0.17A, 277V: 0.15A

GUS17-4 30W: 120V: 0.25A, 208V: 0.15A, 240V: 0.13A, 277V: 0.11A

Dimming Driver:

Driver includes dimming control wiring for 0-10V dimming systems.

Requires separate 0-10V DC dimming circuit. Dims down to 10%.

THD:

GUS17-2: 6.6% at 120V, 14.51% at 277V

GUS17-4: 6.6% at 120V, 14.51% at 277V

Power Factor:

GUS17-2: 99.44% at 120V, 94.47% at 277V

GUS17-4: 99.56% at 120V, 95.91% at 277V

Surge Protection

L-N:1KV, L/N-PG:2KV

ELECTRICAL (CONTINUED)

Battery Backup Light Loss Factor:

GUS17-2:

25W: 0.05

20W: 0.06

15W: 0.05

GUS17-4:

50W: 0.03

40W: 0.04

30W: 0.05

OTHER

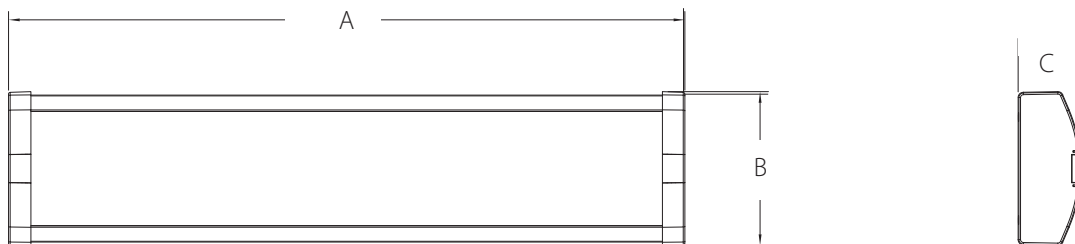
Buy American Act Compliance:

RAB values USA manufacturing! Upon request, RAB may be able to manufacture this product to be compliant with the BUY American Act (BAA). Please contact customer service to request a quote for the product to be made BAA compliant.

Warranty

The RAB 5-year, limited warranty covers light output, driver performance and paint finish. RAB's warranty is subject to all terms and conditions found at rablighting.com/warranty.

DIMENSIONS



MODEL#	A	B	C	Weight (Lbs)
GUS17-2	23 3/4"	5 3/8"	2 1/4"	2.29
GUS17-4	47"	5 3/8"	2 1/4"	3.84

ACCESSORIES

IMAGE	SKU#	UPC	DESCRIPTION
	GUS17 VHOOK	192552028493	GUS17 2-VHOOK, 2-40" CHAINS
	GUS17 JOIN KIT	192552028486	GUS17 JOIN KIT WITH BRACKET/NUTS/WIRE

GUS17 Field-Adjustable Wrap

PERFORMANCE

GUS17-2	5000K	4000K	3500K	5000K	4000K	3500K	5000K	4000K	3500K
WATTAGE	25W			20W			15W		
INPUT WATTS	25W	25W	25W	20W	20W	20W	15W	15W	15W
LUMENS	2,971	2,974	2,906	2,430	2,419	2,368	1,837	1,818	1,798
EFFICACY (LM/W)	120.9	123.3	117.4	122.1	123.6	118.8	122.3	122.8	199.2
CRI	82	83	86	82	83	83	82	83	83
VOLTAGE RATINGS	120-277V								

GUS17-4	5000K	4000K	3500K	5000K	4000K	3500K	5000K	4000K	3500K
WATTAGE	50W			40W			30W		
INPUT WATTS	50W	50W	50W	40W	40W	40W	30W	30W	30W
LUMENS	5,869	5,873	5,694	4,882	4,877	4,749	3,772	3,734	3,662
EFFICACY (LM/W)	122.5	125.7	115.4	124.9	127.3	121.2	126.9	128.1	123.2
CRI	82	84	86	82	84	83	82	84	83
VOLTAGE RATINGS	120-277V								

ORDERING MATRIX

GUS17 Ultra-Economy, Field-Adjustable, LED Wrap

Family	Size/Wattages	Color Temperature	Finish	Voltage	Options
GUS17	—				
	2 2 Feet (25/20/15W) 4 4 Feet (50/40/30W)	BLANK 5000/4000/3500K	BLANK White	BLANK 120-277V, 0-10V Dimming	BLANK /E /MVS /PIR /LCBS /LCBS/MVS /MVS/E /PIR/E /LCBS/E /LCBS/MVS/E No Option Battery Backup Microwave Occupancy Sensor Passive Infrared Occupancy Sensor Lightcloud Blue PIR Sensor Lightcloud Blue MVS Sensor Microwave Occupancy Sensor /Battery Backup Passive Infrared Occupancy Sensor /Battery Backup Lightcloud Blue PIR Sensor / Battery Backup Lightcloud Blue MVS Sens /Battery Backup