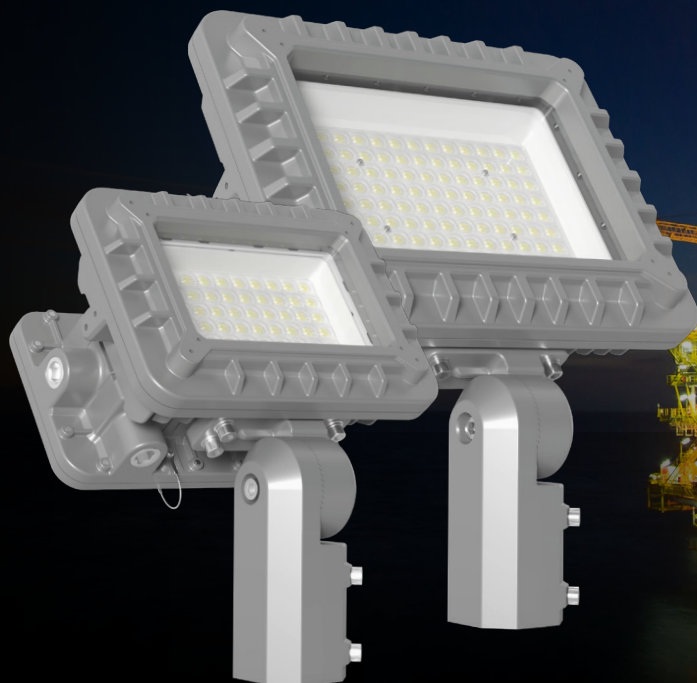


RAB®

HAZFX



A haz floodlight that tackles it all!




HAZFX—Class 1 Div 1 lighting.

The toughest build there is.

Engineered for harsh-environment applications, the HAZFX can withstand use in the presence of flammable vapor, gases, and ignitable dust/fibers. They're ideal for marine and hosedown environments.

- Class 1 Division 1 (*Groups C & D*), T6 or T5 (*check model*)
- Class 1 Division 2 (*Groups A, B, C, D*), T5 or T4 (*check model*)
- Certified to UL standard 1598 and 844



Hazardous Location Classification Chart					
Class	Hazardous material in surrounding atmosphere	Division	Presence of hazardous materials	Group	Hazardous material in surrounding atmosphere
I		1	Ignitable concentrations of hazard exists under normal operating conditions	A	Acetylene
				B	Hydrogen Butadiene Ethylene oxide Propylene oxide Acrolein
				C	Ethylene Cyclopropane Ethyl ether
		2	Ignitable concentrations of hazard exists only under accidental system breakdowns or abnormal operating conditions	D	Acetone Ammonia Benzene Butane Ethanol Gasoline Hexane Methane Naphtha Natural gas Propane Toluene
II		1		E	Combustible metal dust: Aluminum Commercial alloys Magnesium
		2	Ignitable concentrations of hazard exists only under accidental system breakdowns or abnormal operating conditions	F	Combustible carbonaceous dust: Coal Coal dusts Carbon black charcoal
				G	Other combustible dusts: Chemicals Flour Grain Plastic Wood
		1	Ignitable concentrations of hazard exists under normal operating conditions		Not applicable
III		2			



FEATURE PAGE



100,000 HRS
LED Lifespan



480V

AVAILABLE FOR
150W MODEL



IP RATING

IP66



5-YEAR,
NO-COMPROMISE
WARRANTY

RAB's warranty is
subject to all terms
and conditions found at
rablighting.com/warranty

Anywhere you need it.

With two housing sizes accommodating five wattage options, the HAZFX family delivers the perfect solution for any challenging environment.



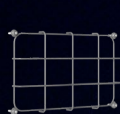
30W & 60W

100W, 150W & 200W

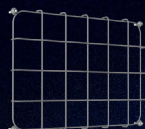
Secure installations.

The HAZFX is built to be flexible. Choose between yoke and slipfitter mounts to suit your specific needs or use the field-replaceable, adjustable arm (*fits both housing sizes*). Wire guards and hoods are also available for additional protection.

Wire Guards

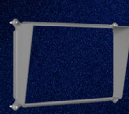


GDHAZFXS



GDHAZFXL

Hoods



HHAZFXS



HHAZFXL

Adjustable Arm



HAZFF-ADJ-ARM*

*For all model sizes.

Light it right.

The HAZFX delivers a cool 5000K light output with a wide NEMA 7H x 6V distribution pattern that keeps your site safely illuminated from corner to corner.

5000K



Ordering Matrix

Product Family	Size/Wattage	Mounting	Color Temperature	NEMA Type	Driver	Finish
HAZFX						
	30 60 100 150 200	BLANK SF	BLANK 5000K	BLANK 7Hx6V	BLANK /480	BLANK Gray

*480V available only for 100W, 150W, 200W