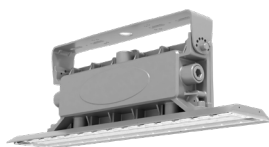
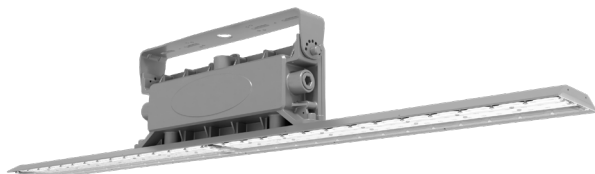


HAZL34 Linear High Bay, Hazardous Locations

HAZL34 40W



HAZL34 80W, 120W &, 200W



HAZL34 Linear High Bay, Hazardous Locations



0-10V



100,000
HOURS



EASY INSTALL



IP RATING



WET
RATED

PROJECT:

DATE:

TYPE:

PREPARED BY:



KEY FEATURES

- Available in 2 ft and 4 ft models:
 - 2 ft: 40W
 - 4 ft: 80W, 120W, & 200W
- Available CCT: 5000K
- Voltage rating 120-277V. 480V also offered in 80W, 120W, & 200W models
- Pendant mount (pendant by others), chain mount and yoke mount standard. Ceiling mount kits sold separately
- Designed to perform in the areas with hazardous vapor and gases
- Wire guards available for both the sizes
- IP66 rated
- UL Listed for wet location
- 5-Year, no-compromise warranty
- Certified for use in Class I, Division 2, Groups A, B, C, D

TECHNICAL SPECIFICATIONS

COMPLIANCE

UL Listed

Suitable for wet locations. Certified to UL standard 1598 and 844

DLC Listed

This product is on the Design Lights Consortium (DLC) Qualified Products List and is eligible for rebates from DLC Member Utilities. Designed to meet DLC 5.1 requirements.

CATALOG#	DLC ID	CATALOG#	DLC ID
HAZL34-40	S-93RPUZ		
HAZL34-80	S-C3MKH7	HAZL34-80/480	S-QCRBV0
HAZL34-120	S-0N3JSV	HAZL34-120/480	S-8VZLZ9
HAZL34-200	S-2W38TX	HAZL34-200/480	S-G4VVN7

IP Listing

IP66 rated

LED CHARACTERISTICS

LEDs

Long-life, high-efficacy, discrete, surface-mount LEDs

Color Consistency

7-step MacAdam Ellipse binning to achieve consistent fixture-to-fixture color

Color Uniformity

RAB's range of Correlated Color Temperature follows the guidelines of the American National Standard for Specifications for the Chromaticity of Solid State Lighting (SSL) Products, ANSI C78.377-2017.

CONSTRUCTION

Cold Weather Starting

The minimum starting temperature is -40°C (-40°F)

Maximum Ambient Temperature

Suitable for use in up to 65°C (149°F)

Mounting

All models come standard with three mounting options—pendant mount (pendant by others), chain mount, and a yoke bracket for surface mount. A separate kit is available for ceiling mount.

Housing

Aluminum

Reflector

Polycarbonate

Gasket

Silicone

Tilt Increment

2 ft Models: 45° (yoke bracket)

4 ft Models: 25.7° (yoke bracket)

Green Technology

Mercury and UV free. RoHs-compliant components.

Finish

Formulated for high durability and long lasting color

EFFECTIVE PROJECTED AREA (EPA)

EPA:

2 ft Model: 1.0008 ft²

4 ft Models: 1.992 ft²

HAZL34 Linear High Bay, Hazardous Locations

TECHNICAL SPECIFICATIONS

ELECTRICAL

Drivers:

Constant Current, Class 2, Class P, 120-277V, 50/60 Hz
40W: 120V: 0.34A, 208V: 0.20A, 240V: 0.17A, 277V: 0.16A
80W: 120V: 0.67A, 208V: 0.39A, 240V: 0.34A, 277V: 0.30A
120W: 120V: 1.00A, 208V: 0.58A, 240V: 0.50A, 277V: 0.46A
200W: 120V: 1.68A, 208V: 0.95A, 240V: 0.83A, 277V: 0.73A

Constant Current, Class 2, Class P, 480V, 50/60 Hz
80W: 480V: 0.18A
120W: 480V: 0.26A
200W: 480V: 0.44A

Dimming Driver:

Driver includes dimming control wiring for 0-10V dimming systems.
Requires separate 0-10V DC dimming circuit. Dims down to 10%.

THD:

40W: 4.45% at 120V, 14.55% at 277V
80W: 4.89% at 120V, 6.76% at 277V
80W: 7.09% at 480V
120W: 4.58% at 120V, 7.06% at 277V
120W: 3.17% @480V
200W: 7.42% at 120V
200W: 3.17% @480V

Power Factor:

40W: 99.5% at 120V, 90.7% at 277V
80W: 99.9% at 120V, 94.2% at 277V
80W: 92.3% at 480V
120W: 99.7% at 120V, 91.8% at 277V
120W: 94.2% @480V
200W: 99.5% at 120V
200W: 94.2% @480V

Surge Protection

L/N-PE: 10kV, L-N: 6kV

Note: All values are typical (tolerance +/- 10%)

ELECTRICAL

Temperature Ratings:

MODEL	SCOPE	AMBIENT TEMPERATURE RANGE	T-CODE
HAZL34-40	Class I, Division 2, Group A,B,C,D	-40°C to 65°C	T4A
HAZL34-80			T4A
HAZL34-80/480			T5
HAZL34-120			T4A
HAZL34-120/480			T4A
HAZL34-200			T4A
HAZL34-200/480			T4A

PERFORMANCE

Lifespan:

100,000-Hour LED lifespan based on IES LM-80 results
and TM-21 calculations

OTHER

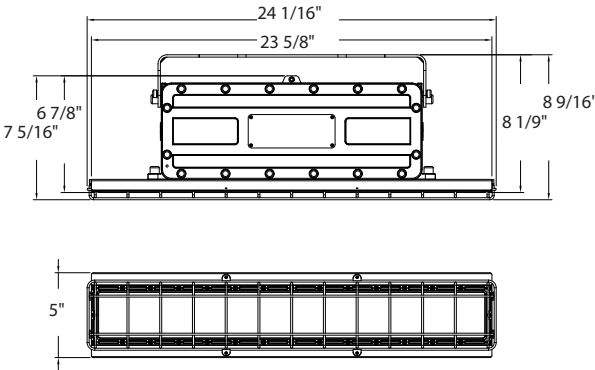
Warranty

The RAB 5-year, no-compromise warranty covers light output, color stability, driver performance, paint finish and labor. RAB's warranty is subject to all terms and conditions found at rablighting.com/warranty.

DIMENSIONS

HAZL34-40W

Weight: 15.0 lbs

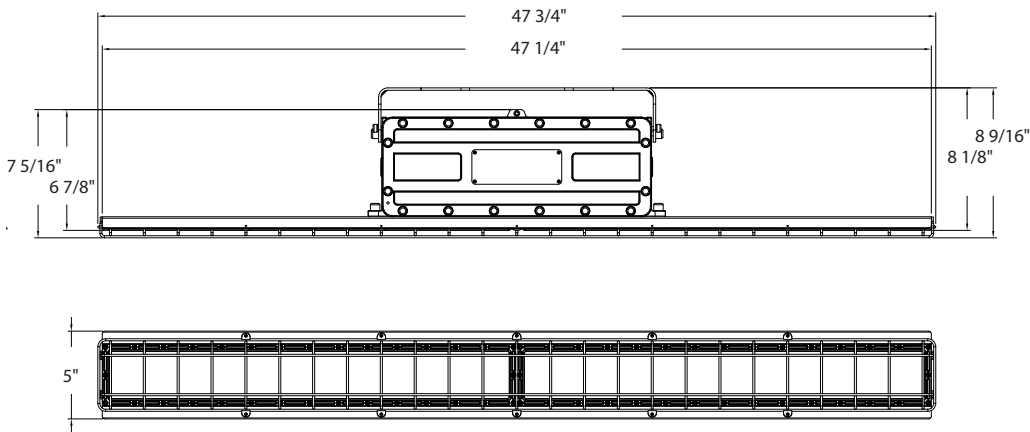


HAZL34 Linear High Bay, Hazardous Locations

DIMENSIONS

HAZL34-80W ,120W &, 200W

Weight: 21.2 lbs



PERFORMANCE

HAZL34	5000K	5000K	5000K	5000K	5000K	5000K	5000K
WATTAGE	40W	80W	120W	200W	80W	120W	200W
INPUT WATTS	40.7W	80.6W	120W	199.4W	80.5W	118.4W	194.1W
LUMENS	6,297	12,901	18,837	31,061	13,164	20,240	31,017
EFFICACY (LM/W)	154.7	160.1	157	155.8	163.5	170.9	159.8
CRI	82	82	82	83	82	84	84
VOLTAGE RATINGS	120-277V				480V		

ORDERING MATRIX

HAZL34

Family		Wattage (SIZE)	Color Temp	Finish	Voltage
HAZL34	-	<div>402 feet, 40W</div> <div>804 feet, 80W</div> <div>1204 feet, 120W</div> <div>2004 feet, 200W</div>	<div>BLANK</div> <div>5000K</div>	<div>BLANK</div> <div>Gray</div>	<div>BLANK /480</div> <div>120-277V, 0-10V Dimming</div> <div>480V, 0-10V Dimming*</div>

* 480V available for 80W,120W & 200W modle only