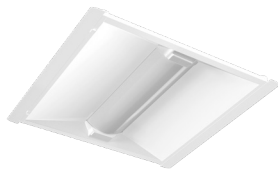


# RTLED Field-Adjustable Troffer



RTLED2X2



RTLED1X4



PROJECT:

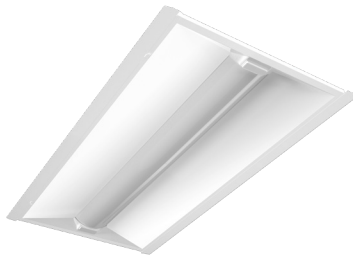
DATE:

TYPE:

PREPARED BY:



RTLED2X4



## KEY FEATURES

- Three different sizes & **field-adjustable power**:  
2'X2': 30/25/18W (Factory default 30W)  
1'X4': 30/25/18W (Factory default 30W)  
2'X4': 35/30/25W (Factory default 35W)
- **Field-adjustable CCT**: 3500/4000/5000K (factory default:4000K)
- Voltage rating: **120-277V**
- **0-10V dimming** or **wireless dimming** with **Lightcloud Blue**
- Ventilated **air-return mounting frames** are available for all sizes (sold separately) which helps reduce the number of required ceiling vents for a cleaner appearance.
- Battery backup available
- **5-year, limited warranty**

## RTLED Troffer - Field Adjustable



FIELD  
ADJUSTABLE



0-10V



BATTERY  
BACKUP



IC RATED



LIGHTCLOUD  
BLUE



DAMP  
RATED



100,000  
HOURS

## PERFORMANCE

RTLED2X2	3500K	4000K	5000K	3500K	4000K	5000K	3500K	4000K	5000K
WATTAGE	30W			25W			18W		
INPUT WATTS	28.5W	27.6W	28.6W	25.1W	24.1W	25.1W	17.7W	17W	17.7W
LUMENS	3,583	3,814	3,635	3,193	3,357	3,257	2,293	2,343	2,311
EFFICACY	125.7	138.1	127.2	127.2	138.1	129.8	129.5	137.6	130.6
CRI	84	85	85						
VOLTAGE	120-277V			120-277V			120-277V		

RTLED1X4	3500K	4000K	5000K	3500K	4000K	5000K	3500K	4000K	5000K
WATTAGE	30W			25W			18W		
INPUT WATTS	30.1W	29.2W	30W	25.6W	24.7W	25.4W	18.6W	17.9W	18.5W
LUMENS	3,852	4,156	4,005	3,332	3,551	3,424	2,438	2,588	2,515
EFFICACY	128	142.4	133.5	130.2	143.7	134.8	131.1	144.5	135.9
CRI	85	85	85						
VOLTAGE	120-277V			120-277V			120-277V		

# RTLED Field-Adjustable Troffer



## PERFORMANCE

RTLED2X4	3500K	4000K	5000K	3500K	4000K	5000K	3500K	4000K	5000K
WATTAGE	35W			30W			25W		
INPUT WATTS	35.5W	33.8W	35.5W	30.3W	29.2W	30.7W	25.3W	24.4W	25.4W
LUMENS	4,726	4,955	4,909	4,075	4,300	4,267	3,435	3,658	3,601
EFFICACY	133.2	146.4	138.3	134.5	147.2	138.5	135.7	149.8	141.5
CRI	85	84	85						
VOLTAGE	120-277V			120-277V			120-277V		

## TECHNICAL SPECIFICATIONS

### COMPLIANCE

#### UL Listed

Suitable for damp locations

#### DLC Listed

This product is listed by Design Lights Consortium (DLC) as an ultra-efficient premium product that qualifies for the highest tier of rebates from DLC Member Utilities. Designed to meet DLC 5.1 requirements.

MODEL#	PRODUCT ID
RTLED2X2	S-R1K8K
RTLED1X4	S-SM9GEZ
RTLED2X4	S-QOHE9L

### CONSTRUCTION

#### Cold Weather Starting

Minimum starting temperature is -20°C (-4°F)

#### Maximum Ambient Temperature

Suitable for use in up to 40°C (104°F)

#### Cold Weather Starting for E

Minimum starting temperature is 0°C (32°F)

#### Maximum Ambient Temperature

Suitable for use in up to 40°C (104°F)

#### Mounting

Retrofits into the existing housing. Ventilated air-return mounting frames are available for all sizes (sold separately).

#### Lens

Polycarbonate

#### Housing / Finish

Steel sheet metal

#### Green Technology

Mercury and UV free. RoHs-compliant components

#### Finish

Formulated for high durability and long lasting color

### LED CHARACTERISTICS

#### LEDs

Long-life, high-efficacy, discrete, surface-mount LEDs

#### Color Stability

LED color temperature is warranted to shift no more than 200K in color temperature over a 5-year period

### FACTORY SETTINGS

#### Field-Adjustable:

2'X2': 30W/25W/18W (factory default 30W)

1'X4': 30W/25W/18W (factory default 30W)

2'X4': 35W/30W/25W (factory default: 35W)

Color temperature: 3500/4000/5000K (factory default 4000K)

### ELECTRICAL

#### Drivers:

Class 2, Constant Current, 120-277V, 50/60Hz

35W: 120V: 0.30A, 208V: 0.17A, 240V: 0.15A, 277V: 0.13A

30W: 120V: 0.25A, 208V: 0.15A, 240V: 0.13A, 277V: 0.12A

25W: 120V: 0.21A, 208V: 0.12A, 240V: 0.10A, 277V: 0.10A

18W: 120V: 0.15A, 208V: 0.09A, 240V: 0.08A, 277V: 0.07A

#### Dimming Driver:

Driver includes dimming control wiring for 0-10V dimming systems. Requires separate 0-10V DC dimming circuit. Dims down to 10%

#### Surge Protection:

2.5kV

#### THD: (Factory default)

2'X2': 3.41% at 120V, 4.37% at 277V

1'X4': 3.43% at 120V, 4.22% at 277V

2'X4': 2.87% at 120V, 3.07% at 277V

#### Power Factor: (Factory default)

2'X2': 99.7% at 120V, 96.4% at 277V

1'X4': 99.6% at 120V, 96% at 277V

2'X4': 99.7% at 120V, 94.3% at 277V

#### Battery Backup:

Battery backup will operate the LED Lamp for 90 minutes if power falls. Wired for 120-277V.

#### Battery Backup Light Loss Factor:

2'X2': 0.32

1'X4': 0.32

2'X4': 0.28

# RTLED Field-Adjustable Troffer



## TECHNICAL SPECIFICATIONS (CONTINUED)

### WIRELESS NETWORK LIGHTING CONTROLS

#### Lightcloud Blue

Lightcloud Blue (LCB) is a Bluetooth Mesh wireless lighting control system that allows you to control RAB's various compatible devices. With RAB's patented Rapid Provisioning technology, devices can be quickly and easily commissioned for residential and large commercial applications using the Lightcloud Blue mobile app. Each device in a system can communicate with any other device, eliminating the need for a Gateway or Hub and maximizing the control system's reach.

DLC system - N1XMLOEATBA (Interior); NHCZ2BIA17L (Exterior)

Learn more at [rablighting.com/controls](http://rablighting.com/controls)

**Controller:** LCBAUX/[W/B]

### OCCUPANCY SENSORS

Sensor Type: Passive Infrared (PIR) or Microwave (MVS)

Sensor Mounting: Integrated

Max Mounting Height: 13 ft.

Detection Range: 18 ft. to 44ft. diameter mounted at 13 ft.

Daylight Sensing: Yes, continuous dimming optional.

#### Default Sensor Settings:

Motion Sensitivity: High

Brightness when triggered : 100%

Hold time: 20 minutes

Standby to dim: 20%

Standby time: 1 minute

When vacant: Off

Daylight: Disabled

**Adjustable Settings:** Settings for Lightcloud Blue models can be adjusted using the mobile app. All other sensors will require MSR1 Remote (sold separately) to adjust the following sensor settings:

Standby to dim: 10%/20%/30%/50%

Standby time: 0s/10s/30s/1min/5min/10min/30min/60min/+∞

Daylight Threshold: 2Lux/10Lux/30Lux/50Lux/80Lux/120Lux/Disable

### OTHER

The RAB 5-year, limited warranty covers light output, driver performance, paint finish and labor. RAB's warranty is subject to all terms and conditions found at [rablighting.com/warranty](http://rablighting.com/warranty).

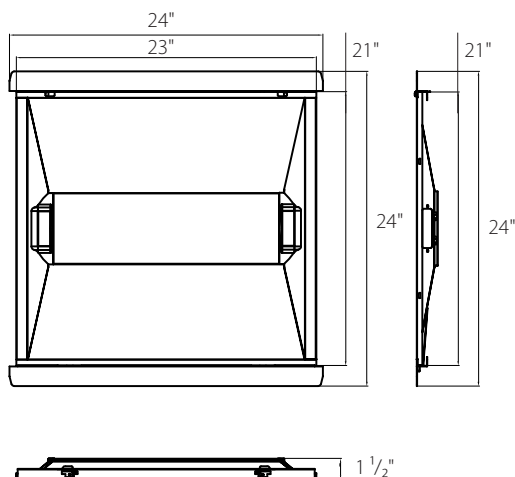
#### Lifespan

100,000-hour LED lifespan based on IES LM-80 results and TM-21 calculations

## DIMENSIONS

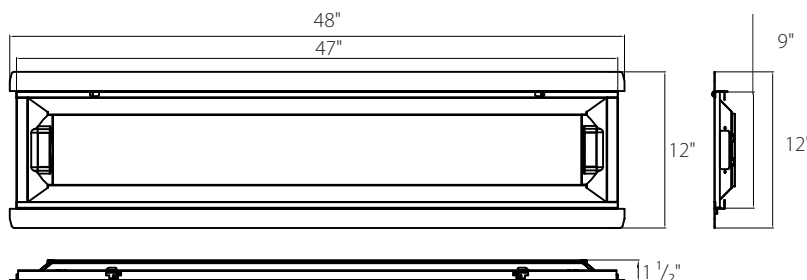
### RTLED2X2

Weight: 7.3 Lbs



### RTLED1X4

Weight: 8.5 Lbs



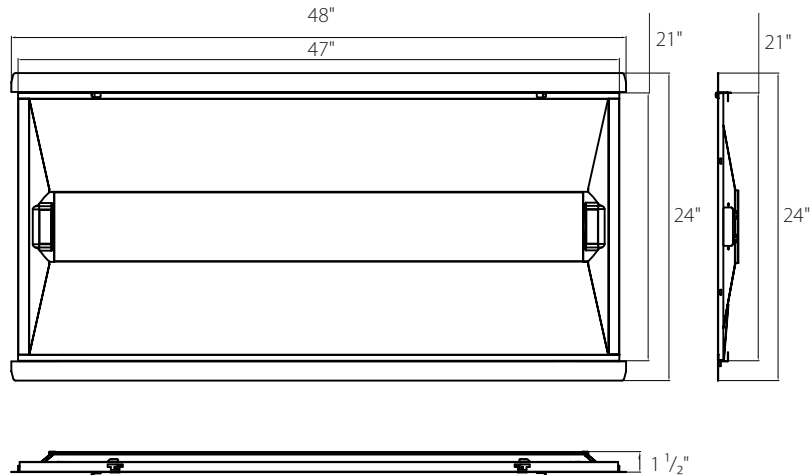
# RTLED Field-Adjustable Troffer






## DIMENSIONS (CONTINUED)

RTLED2X4

Weight: 13.1 Lbs



## ACCESSORIES (to be ordered separately)

Image	SKU#	UPC	Description
	MSR1	192552026055	MULTI SENSOR REMOTE IP20
	RTAH2	192552018364	RTLED2X2 FRAME WHITE AIR HOLE 2 PCS 2FT
	RTAH4	192552018371	RTLED1X4 & 2X4 FRAME WHITE AIR HOLE 2 PCS 4FT

## ORDERING MATRIX

### RTLED Field-adjustable Troffer

Family	Size/Wattages	Color Temperature	Finish	Driver	Controls	Battery Backup
RTLED						
2X2	2' x 2' (30/25/18W) Field-adjustable	Blank 3500/4000/5000K CCT adjustable	Blank White	Blank 120-277V 0-10V dimming	Blank /MVS /LCB /LCBS	Blank /E
1X4	1' x 4' (30/25/18W) Field-adjustable				No Option Microwave Sensor Lightcloud Blue Lightcloud Blue Passive Infrared Sensor	No Option Battery Backup
2X4	2' x 4' (35/30/25W) Field-adjustable				/LCBS/MVS Lightcloud Blue Microwave Sensor	

