



RAB

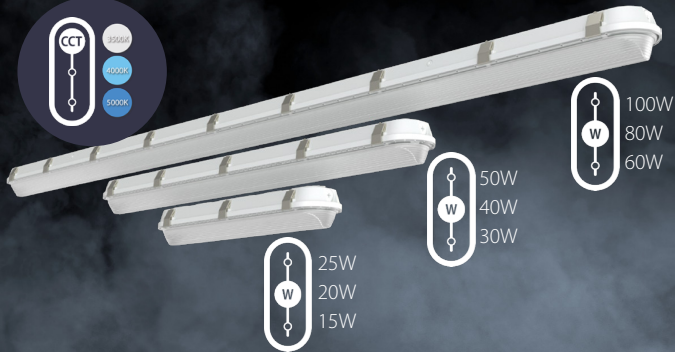


The SHARK is more powerful than ever!

Selectable wattage and CCT maximize versatility.

Now with field adjustability.

The SHARK is still available in 3 sizes but now includes three selectable wattages and color temperatures, giving you 9 SKUs in one great washdown!

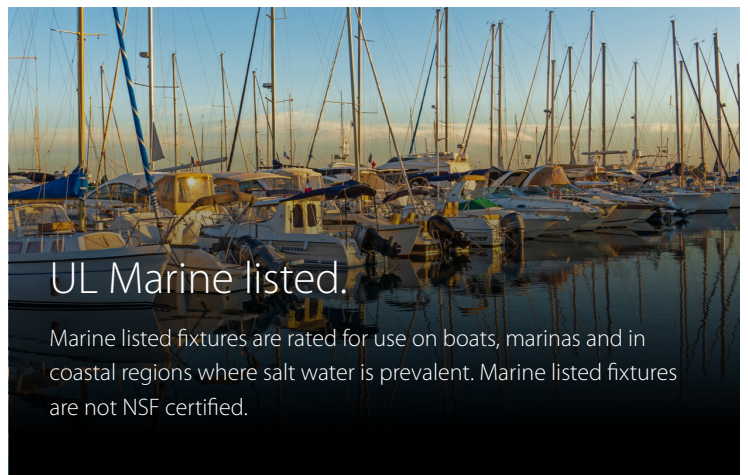


NSF certified.

NSF certified for use in food-preparation facilities and meets strict standards for public health safety. Marine-listed models are not NSF certified.

Built to withstand the elements.

- IP66 rated to protect against moisture and dust
- UL 746C F1 weatherability rating for UV resistance, water exposure, and extreme temperature conditions
- NEMA 4X rated



UL Marine listed.

Marine listed fixtures are rated for use on boats, marinas and in coastal regions where salt water is prevalent. Marine listed fixtures are not NSF certified.



100k-hour
LED lifespan



Dimmable



*Please visit rablighting.com to see which models have DLC or DLC Premium listing.

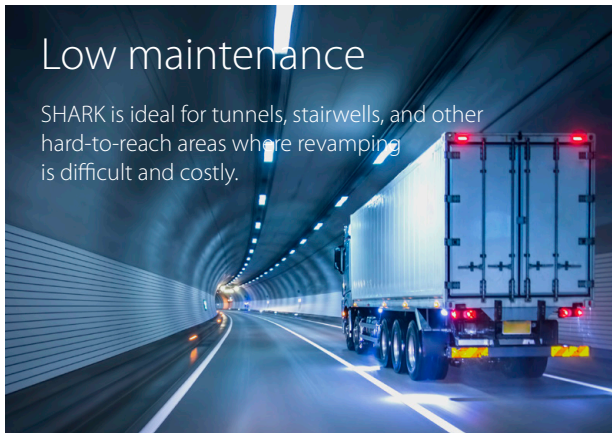


5-YEAR, NO
COMPROMISE
WARRANTY

RAB's Warranty is
subject to all terms
and conditions found at
rablighting.com/warranty

Low maintenance

SHARK is ideal for tunnels, stairwells, and other hard-to-reach areas where revamping is difficult and costly.



Lightcloud® Blue enabled.

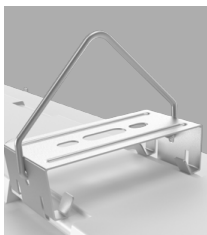
Available with factory-installed Lightcloud Blue compatibility, for use with our wireless, Bluetooth mesh control system.

Lightcloud®

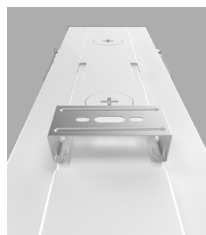


Versatile options.

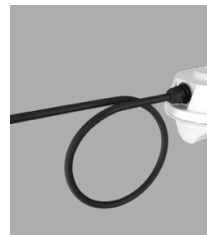
All models come standard with surface-mount brackets and V-hooks for chain mounting. Accessory mounting kits are also available with tamperproof clips, or for angled surface or junction box mounting.



Chain-mounted
brackets (standard)



Surface mount
(standard)



Mounting



Junction Box
Mounting Bracket
JBSHARK-G2
(For 2' and 4' models:
contains 2 brackets)



45° Angle, Surface-Mount Bracket
ANGSHARK-G2
(For 2' and 4' models:
contains 2 brackets)



Tamperproof Kit
TPKSHARK-G2
(For 2' and 4' models:
contains 4 brackets)



Sensor Remote Control
MSR1
(For PIR and MVS sensor models)

ANGSHARK8-G2
(For 8' models:
contains 4 brackets)

TPKSHARK8-G2
(For 8' models;
contains 8 brackets)

Ordering Matrix

Product Family	Size/Wattages	Mounting	Color Temperature	Finish	Voltage	Options
SHARK						
2	2' (25/20/15W)	Blank	Blank	Blank	Blank	No option
2M	2' (25/20/15W) Marine Listed	Metal Bracket with hooks	3500/4000/5000K	White	120-277V 0-10V Dimming /480V 0-10V Dimming	Battery Backup Lightcloud Controller /LC /MVS /PIR /LCBS /LCBS/MVS /MVS/E /PIR/E /LCBS/E /LCBS/MVS/E
4	4' (50/40/30W)					Microwave Occupancy Sensor Passive Infrared Occupancy Sensor Lightcloud Blue PIR Sensor Lightcloud Blue MVS Sensor Microwave Occupancy Sensor /Battery Backup
4M	4' (50/40/30W) Marine List					
8	8' (100/80/60W)					
8M	8' (100/80/60W) Marine Listed					