

STRP Field-Adjustable Strip Light



STRP2



STRP2H



STRP4



STRP4H



PROJECT: _____

DATE: _____

TYPE: _____

PREPARED BY: _____



KEY FEATURES

- Available models in 2 sizes with field-adjustable wattages:
STRP2: 2ft (10/8/6W) Single tube (Default 10W)
STRP2H: 2ft (20/15/10W) Double tube (Default 20W)
STRP4: 4ft (20/15/10W) Single tube (Default 20W)
STRP4H: 4ft (40/30/20W) Double tube (Default 40W)
- Field-adjustable CCT: **3500/4000/5000K** (Default 4000K)
- Mounting **bracket plates, J-Box adapter, & S-hooks** available as accessories.
- MVS** and **PIR** sensors as well as sensors powered by **Lightcloud Blue** available. Multi sensor remote (MSR1) available as an accessory
- Battery backup** option available on 4ft models
- UL Listed for **damp** locations
- 0-10V** dimming
- 5-Year, limited warranty

Sustainable, Field-Adjustable Strip Light

0-10V
100,000
HOURS
FIELD
ADJUSTABLE
DAMP
RATED
LIGHTCLOUD
BLUE

PERFORMANCE

STRP2	3500K	4000K	5000K	3500K	4000K	5000K	5000K	4000K	3500K
WATTAGE	10W			8W			6W		
INPUT WATTS	10.4W	10.2W	10.4W	8.2W	8W	8.2W	6.4W	6.4W	6.4W
LUMENS	1,502	1,558	1,540	1,164	1,193	1,199	881	918	909
EFFICACY	144.4	152.8	148.1	141.9	149.1	146.2	137.6	143.5	142.1
CRI	84	85	83	84	85	84	84	85	84
VOLTAGE RATING	120-277V								

STRP2H	3500K	4000K	5000K	3500K	4000K	5000K	5000K	4000K	3500K
WATTAGE	20W			15W			10W		
INPUT WATTS	19.7W	19.2W	19.7W	14.9W	14.6W	14.9W	10.3W	10.2W	10.3W
LUMENS	2,965	3,071	3,048	2,225	2,292	2,285	1,514	1,557	1,563
EFFICACY	150.5	160	154.7	149.3	157	153.4	147	152.7	151.8
CRI	84	85	83	84	85	84	84	85	84
VOLTAGE RATING	120-277V								

STRP Field-Adjustable Strip Light



PERFORMANCE

STRP4	3500K	4000K	5000K	3500K	4000K	5000K	5000K	4000K	3500K
WATTAGE	20W			15W			10W		
INPUT WATTS	19.8W	19.3W	19.8W	15.1W	14.8W	15.1W	10.5W	10.4W	10.5W
LUMENS	2,996	3,109	3,071	2,264	2,342	2,325	1,558	1,607	1,604
EFFICACY	151.3	161.1	155.1	149.9	158.2	154	148.4	154.5	152.8
CRI	84	85	83	84	85	84	84	85	84
VOLTAGE RATING	120-277V								

STRP4H	3500K	4000K	5000K	3500K	4000K	5000K	5000K	4000K	3500K
WATTAGE	40W			30W			20W		
INPUT WATTS	38.1W	37.2W	38.1W	28.6W	28W	28.6W	19W	18.7W	19W
LUMENS	5,592	5,815	5,730	4,337	4,495	4,462	2,924	3,007	3,017
EFFICACY	146.8	156.3	150.4	151.6	160.5	156	153.9	160.8	158.8
CRI	84	85	84	84	85	84	84	85	84
VOLTAGE RATING	120-277V								

TECHNICAL SPECIFICATIONS

COMPLIANCE

UL Listed

Suitable for damp locations

CCEA Compliance

Complies with the City of Chicago Environmental Air ratings.

IESNA LM-79 & LM-80 Testing

RAB LED luminaires and LED components have been tested by an independent laboratory in accordance with IESNA LM-79 and LM-80

DLC Listed

This product is on the Design Lights Consortium (DLC) Qualified Products List and is eligible for rebates from DLC Member Utilities. Designed to meet DLC 5.1 requirements.

MODEL#	DLC ID	PRIMARY USE
STRP2	S-LHRY68	Direct Linear Ambient Luminaires
STRP2H	S-8T67S9	
STRP4	S-B78ZKF	
STRP4H	S-XOGP4X	

LED CHARACTERISTICS

LEDs

Long-life, high-efficacy, discrete, surface-mount LEDs

FACTORY SETTINGS

Wattage:

STRP2: 2ft (10/8/6W) Single tube (Default 10W)

STRP2H: 2ft (20/15/10W) Double tube (Default 20W)

STRP4: 4ft (20/15/10W) Single tube (Default 20W)

STRP4H: 4ft (40/30/20W) Double tube (Default 40W)

Adjustable CCT: 3500/4000/5000K (Default 4000K)

CONSTRUCTION

Cold Weather Starting

The minimum starting temperature is -20°C (-4°F)

Cold Weather Starting for battery back-up (4ft Models)

The minimum starting temperature is 0°C (32°F)

Maximum Ambient Temperature

Suitable for use in 40°C (104°F)

Maximum Ambient Temperature for battery back-up (4ft models)

Suitable for use in up to 40°C (104°F)

Mounting

Mounting bracket plates, J-box & S-hooks available as accessories

Housing

Sheet metal

Lens

Polycarbonate

Reflector

Metal

Finish

Power-coated matte white. Formulated for high durability and long-lasting color

Green Technology

Mercury and UV free. RoHs-compliant components.

TECHNICAL SPECIFICATIONS

ELECTRICAL

Drivers:

Constant Current, Class 2, 120-277V, 50/60 Hz,

STRP2:

10W: 120V: 0.08A, 208V: 0.05A, 240V: 0.04A, 277V: 0.04A

8W: 120V: 0.067A, 208V: 0.04A, 240V: 0.033A, 277V: 0.03A

6W: 120V: 0.05A, 208V: 0.03A, 240V: 0.03A, 277V: 0.02A

STRP2H / STRP4:

20W: 120V: 0.17A, 208V: 0.10A, 240V: 0.08A, 277V: 0.07A

15W: 120V: 0.13A, 208V: 0.07A, 240V: 0.06A, 277V: 0.05A

10W: 120V: 0.08A, 208V: 0.05A, 240V: 0.04A, 277V: 0.04A

STRP4H:

40W: 120V: 0.33A, 208V: 0.19A, 240V: 0.17A, 277V: 0.14A

30W: 120V: 0.25A, 208V: 0.14A, 240V: 0.13A, 277V: 0.11A

20W: 120V: 0.17A, 208V: 0.10A, 240V: 0.08A, 277V: 0.07A

Dimming Driver:

Driver includes dimming control wiring for 0-10V dimming systems. Requires separate 0-10V DC dimming circuit. Dims down to off.

AUX Power Supply:

Yes

THD:

STRP2: 6.4% at 120V, 10.4% at 277V

STRP2H: 8.1% at 120V, 8.6% at 277V

STRP4: 7.7% at 120V, 8.7% at 277V

STRP4H: 9.8% at 120V, 6.7% at 277V

Power Factor:

STRP2: 99.4% at 120V, 92.4% at 277V

STRP2H: 99.4% at 120V, 94.9% at 277V

STRP4: 99.4% at 120V, 95.1% at 277V

STRP4H: 99.3% at 120V, 95.3% at 277V

Surge Protection

DM: 1KV, CM: 2KV

Battery Backup Light Loss Factor:

STRP4:

20W: 20%

15W: 26.7%

10W: 40%

STRP4H:

40W: 10%

30W: 13.3%

20W: 20%

OCCUPANCY SENSORS

Sensor Type: Passive Infrared (PIR) or Microwave (MVS)

Sensor Mounting: Externally mounted to fixture using Right Angle Arm Support (RAAS).

Integrated Sensor Model Number(s): /LCBS uses PIR40/LCB + RAAS.

Input Voltage: 12VDC

Operating Frequency: 50/60Hz

Input Current: 30mA

Operating Temperature: -40°F to 140°F (-20°C to 60°C)

Max Mounting Height: 40 ft. (PIR); 50 ft (MVS)

Detection Range: PIR: 40 ft diameter mounted at 40 ft.; MVS: 50 ft diameter mounted at 50

Daylight Sensing: The sensor will determine to trigger the light(s) on or not based on the daylight threshold level set.

Default Settings:

Motion Sensitivity: High

Brightness when triggered : 100%

Hold time: 20 minutes

Standby to dim: 20%

Standby time: 1 minute

When vacant: Off

Daylight: Disabled

Adjustable Settings: Settings for Lightcloud Blue-enabled sensors can be adjusted using the mobile app. All other sensors will have remote included to adjust the following sensor settings:

Standby to dim: 10%/20%/30%/50%

Standby time: 0s/10s/30s/1min/5min/10min/30min/60min/+∞

Daylight Threshold: 2Lux/10Lux/30Lux/50Lux/80Lux/120Lux/Disable

OTHER

Warranty

The RAB 5-year, limited warranty covers light output, driver performance and paint finish. RAB's warranty is subject to all terms and conditions found at rablighting.com/warranty.

Lifespan

100,000-hour LED lifespan based on IES LM-80 results and TM-21 calculations

STRP Field-Adjustable Strip Light



WIRELESS NETWORK LIGHTING CONTROLS

Lightcloud products offer integrated network lighting control for a truly wireless solution that allows you to manage RAB's various compatible devices. With RAB's patented Rapid Provisioning technology, devices can be quickly and easily commissioned for residential and commercial applications. Each device can communicate with other devices in the mesh network. With two Lightcloud systems to choose from, it's easy to implement controls anywhere.

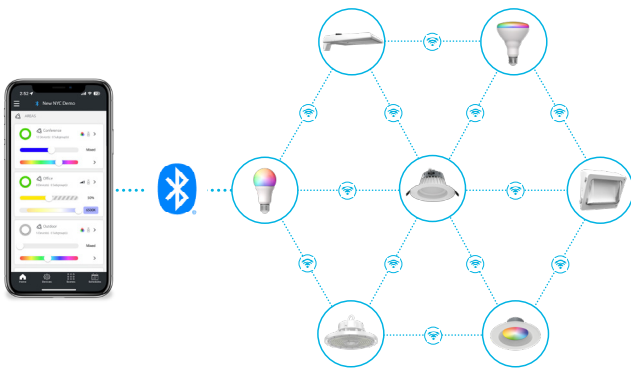


Learn more about Lightcloud wireless networked lighting controls.

Design Lights Consortium Network Lighting Controls:

- Interior Applications: N1XMLOEATB
- Exterior Applications: NHCZ2BIA17L

Lightcloud®



- Utilizes Bluetooth Mesh, eliminating the need for a Gateway or Hub
- Ideal for applications that need basic wireless control such as ON/OFF, dimming, color tuning, Schedules, and SmartShift
- Download the Lightcloud Blue mobile app for iOS or Android devices
- Add the XDIM/BRIDGE/LCB and LCGATEWAY to adopt premium Lightcloud Enterprise features

SIMPLE SETUP



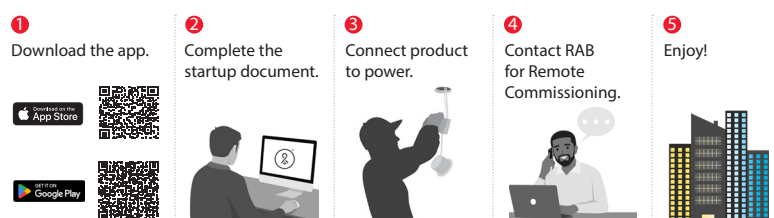
Learn more about [Lightcloud Blue](#). Visit the [Lightcloud Blue Resources](#) page for more information on how to use the system.

Lightcloud®



- Utilizes a secure cellular and Zigbee mesh network that requires a Gateway or Hub (sold separately)
- Offers premium features like remote commissioning, demand response, BACnet integration, and more
- Download the Lightcloud Enterprise mobile app for iOS or Android devices

SIMPLE SETUP



Learn more about [Lightcloud Enterprise](#). Visit the [Lightcloud Enterprise Resources](#) page for more information on how to use the system.

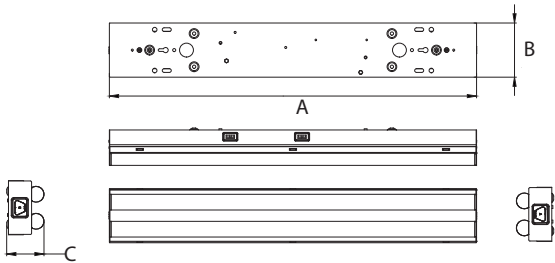
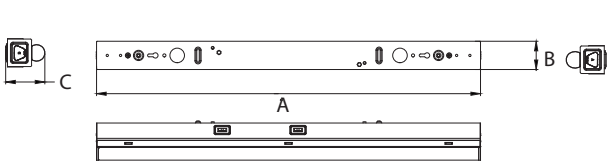
STRP Field-Adjustable Strip Light



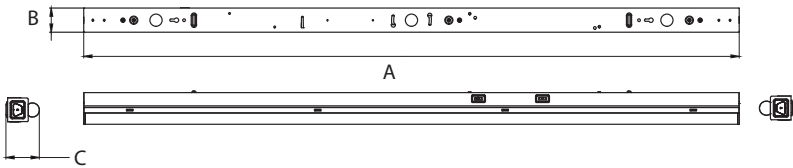
DIMENSIONS

STRP2
Weight: 1.85 lbs

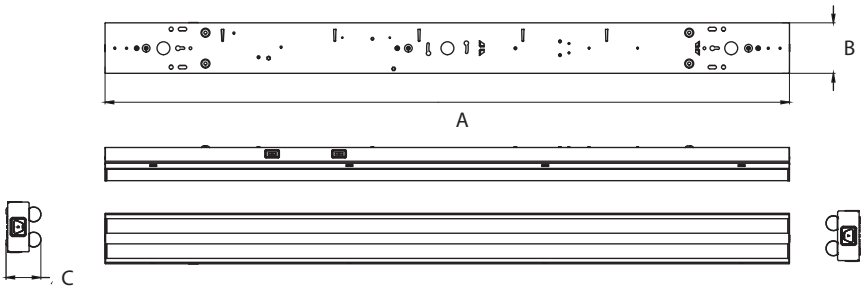
STRP2H
Weight: 2.64 lbs



STRP4
Weight: 3.96 lbs







STRP4H
Weight: 5.48 lbs



MODEL#	A	B	c	Weight
STRP2	24"	1 3/4"	2 1/2"	1.85 lbs
STRP2H	24"	3 1/2"	2 1/2"	2.64 lbs
STRP4	48"	2"	2 1/2"	3.96 lbs
STRP4H	48"	3 1/2"	2 1/2"	5.48 lbs

ACCESSORIES

IMAGE	SKU#	UPC	DESCRIPTION
	MSR1	192552026055	SULTI-SENSOR REMOTE CONTROL IP20
	STRP SHOOK	019813315782	SUSPENSION HOOK 9.5" 2-PIECES FOR STRP STRIP LIGHT
	JBSTRP	019813315799	J-BOX PLATE FOR STRP STRIP LIGHT
	STRP BPLATE	019813315775	BRACKET PLATE120-277VAC STRP STRIP LIGHT

ORDERING MATRIX

STRP Field-Adjustable Strip Light

Family	Size/Wattage	Color Temperature		Finish	Driver		Controls		Battery Backup		
STRP											
2	2ft (10/8/6W)	BLANK	3500/4000/5000K	BLANK	White	BLANK	120-277V,	BLANK	No Option	BLANK	None
2H	2ft (20/15/10W)		CCT Adjustable			0-10V Dimming		/MVS	Microwave Sensor	/E	Battery Backup*
4	4ft (20/15/10W)							/PIR	Passive Infrared Sensor		
4H	4ft (40/30/20W)							/LCBS	Lightcloud Blue w/PIR Sensor		
								/LCBS/MVS	Lightcloud Blue w/MVS Sensor		

* Battery Backup only on 4ft models