

90 minutes  
battery backup time



General and emergency lighting all in one lamp



PROJECT: \_\_\_\_\_

DATE: \_\_\_\_\_

TYPE: \_\_\_\_\_

PREPARED BY: \_\_\_\_\_



## KEY FEATURES

- Replace traditional 18W/32W fluorescent linear tubes
- Built-in lithium batteries for emergency lighting
- Reduces maintenance and replacement costs with longer lifespan
- Provides 90 minutes of light at 400 lumens under emergency use
- 50,000-hour LED lifespan
- Rated for use in enclosed fixtures in dry or damp locations
- 5-Year, No-Compromise Warranty

## PERFORMANCE

Catalog Number	Equivalency	Input Wattage	Lumens	Efficacy	Color Temperature	CRI	L70 Lifespan	DLC ID
T10EM-17-48P-835-SE-BYP	32W T8 Fluorescent	17W	2,045	121	3500K	≥80	50,000	S-YVNFKH
T10EM-17-48P-840-SE-BYP	32W T8 Fluorescent	17W	2,143	124	4000K	≥80	50,000	S-WA9HK1
T10EM-17-48P-850-SE-BYP	32W T8 Fluorescent	17W	2,105	124	5000K	≥80	50,000	S-O04MP6

## TECHNICAL SPECIFICATIONS

### CONSTRUCTION

<b>Product Type</b> Linear Tube	<b>Lens Finish</b> Frosted
<b>Length (Nominal)</b> 4FT	<b>Beam Angle</b> 140°
<b>Bulb Shape</b> T10	
<b>Enclosure Material</b> Polycarbonate and Aluminum	
<b>Endcap Material</b> Polycarbonate and copper	
<b>Base Type</b> G13	

### COMPLIANCE

<b>Safety Listing</b> UL Classified, UL Recognized
<b>Environment</b> Suitable for use in dry and damp environments
<b>Fixture Rating</b> Enclosed
<b>California Energy Commission (CEC) Status</b> Lawful for sales in California
<b>NSF Listing</b> NSF/ANSI Standard 2 - Food Equipment (non-contact), Splash Zone, and Non-Food Zone. (Not for Direct Food Zone without additional fixture considerations).

## TECHNICAL SPECIFICATIONS (CONT.)

### COMPLIANCE

#### RoHS

Mercury and UV free. RoHS-compliant components.

#### FCC

Complies with Part 15 of the FCC Rules.

#### DLC Listed

This product is on the Design Lights Consortium (DLC) Qualified Products List and is eligible for rebates from DLC Member Utilities. Designed to meet DLC 5.1 requirements.

### ELECTRICAL

#### Dimmable

Yes

#### Dimming Type

TRIAC/ELV @ 120V

#### THD

20%

#### Power Factor

0.9

#### Input Voltage

120-277V

#### Operating Frequency

50/60Hz

#### Operating Temperature

32°F to 104°F (0°C to 40°C)

#### Battery Operation

90 minutes

#### Light Output on Battery

400 lm; 3W

#### Battery Type

Lithium

#### Recharge Time Required

24-hours

#### Discharge Temperature

-4°F to 140°F (-20°C to 60°C)

#### Storage Temperature

-4°F to 95°F (-20°C to 35°C)

#### Note

All values are typical (tolerance +/- 10%)

### LED Characteristics

#### R9 Value

High color performance with R9 less than or equal to 4

#### Color Consistency

<5-step MacAdam Ellipse binning to achieve consistent fixture-to-fixture color

#### Color Stability

LED color temperature is warrantied to shift no more than 200K in color temperature over a 5-year period meet DLC 5.1 requirements.

#### Color Uniformity

RAB's range of Correlated Color Temperature follows the guidelines of the American National Standard for Specifications for the Chromaticity of Solid State Lighting (SSL) Products, ANSI C78.377-2017.

### INSTALLATION

#### Installation Method

UL Type B, Ballast Bypass

### OTHER

#### Accessories

T10EM-ACC KIT Test switch kit with lampholders

#### Warranty

RAB warrants that our LED products will be free from defects in materials and workmanship for a period of five (5) years from the date of delivery to the end user, including coverage of light output, color stability, driver performance and fixture finish.

RAB's warranty is subject to all terms and conditions found at [rablighting.com/warranty](http://rablighting.com/warranty).

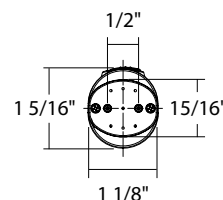
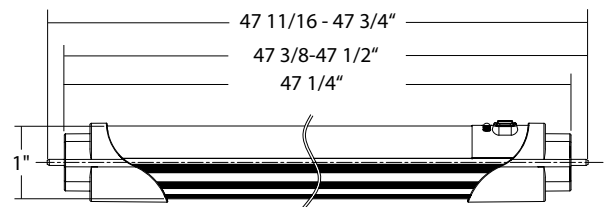
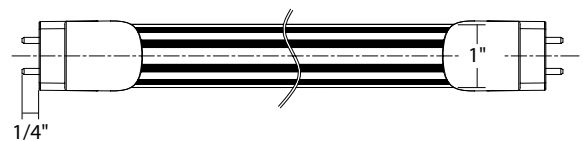
#### Buy American Act Compliance

RAB values USA manufacturing! Upon request, RAB may be able to manufacture this product to be compliant with the Buy American Act (BAA). Please contact customer service to request a quote for the product to be made BAA compliant.

### DIMENSIONS

#### T10EM Tube 17W 4FT

Weight: 0.4 lb



## ACCESSORIES

T10EM Accessory Kit (sold separately)



1 x Emergency test switch

+



2 x Lamp holders

+



2 x P3 Wiring orange caps

Catalog Number	UPC	Description	Packaging
T10EM-ACC KIT	192552025751	Simple accessory to field install an emergency test switch for the T10 Emergency Battery Backup Bypass Single Ended lamp. Includes (2) non-shunted lamp holders, (2) wire caps, and (1) test switch	6

## ORDERING INFO

Catalog Number	Model Number (DLC/Energy Star)	UPC	Case Pack
T10EM-17-48P-835-SE-BYP	T10358(T10EM-17-48P-835-SE-BYP)	192552015387	25
T10EM-17-48P-840-SE-BYP	T10359(T10EM-17-48P-840-SE-BYP)	192552015394	25
T10EM-17-48P-850-SE-BYP	T10360(T10EM-17-48P-850-SE-BYP)	192552015400	25

## ORDERING MATRIX

Family	Wattage	Length	Material	CRI/Color Temp	Wiring Method	Installation Type
<b>T10EM</b>	- 17	- 48	P	-	SE	BYP
Linear Emergency	17 17W	48 4FT	P Plastic	850 80 CRI, 5000K 840 80 CRI, 4000K 835 80 CRI, 3500K	SE Single Ended	BYP Type B, Ballast Bypass