

# Welcome

Lightcloud®

Self-Powered Dimmer

ZDIMSP/LCB

WE'RE HERE TO HELP:

**1(844) LIGHTCLOUD**

1(844) 544-4825

# Hello

The Lightcloud Blue Self-Powered Dimmer can be used to control Lightcloud Blue lights—no wires, no batteries, no gateway or hub required. A simple finger press creates kinetic energy to transfer into electricity to power the module and control the lights via Bluetooth mesh wireless communication.

## Product Features & Specifications

- Color: Matte White
- Warranty: 3-year, limited warranty
- Wireless installation
- Wireless control & configuration
- Self-powered using kinetic energy

# Safety Information

- To avoid risk of fire and electrical shock, products shall be installed in accordance with electrical code and regulations.
- If you're not clear about any content of the instructions, please consult a licensed electrician.
- To avoid the risk of overheating and possible damage to the equipment, do not use the product to control a receptacle, motor-operated appliance or a transformer-supplied appliance.
- Purpose of control: Operating Control, Electronic Controller Switch
- Construction of control: Independently Mounted for Flush Mounting
- Type of Action: Type 1 Action
- Terminal screw torque: 0.55N.m.
- The best installation height of ZDIMSP/LCB: 4ft.

WE'RE HERE TO HELP:

**1 (844) LIGHTCLOUD**

1 (844) 544-4825

[support@lightcloud.com](mailto:support@lightcloud.com)

# Parts Included and Tools Needed

## Parts Included



Self-Powered Dimmer  
(1 pc)



Screw cross flat head  
FM3.5\*0.8\*5mm  
(2 pcs)



Screw cross round head  
M3.5\*25mm  
(2 pcs)



Back Plate  
(1 pc)



Front  
Face Plate  
(1 pc)



Back

# Basic Operation

## ① Requires a Proxy Device.

- The Self-Powered Dimmer requires a compatible proxy device to be paired to the Lightcloud Blue area. The Self-Powered Dimmer communicates with the proxy device and the proxy communicates with the mesh network to control all lights/devices in the Area. Contact RAB for a list of compatible proxy devices.

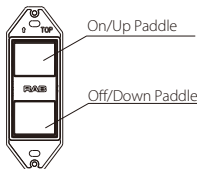
## ② Functional Parts

### 2a On/Up Paddle

- Turn lights ON: Single press
- Increase brightness: Press and hold, release at desired setting

### 2b Off/Down Paddle

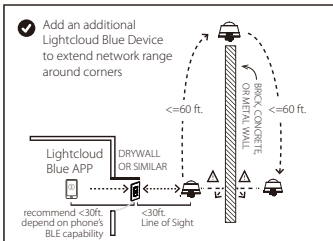
- Turn lights OFF: Single press
- Decrease brightness: Press and hold, release at desired setting



# Installing your Lightcloud Blue Device

## ① Find a Suitable Location

- Lightcloud Blue devices should be positioned within 60 ft. of each other. The Self-Power Dimmer must be within ~30 ft. of the proxy device.
- Building materials such as brick, concrete and steel construction may require additional Lightcloud Blue devices to extend around an obstruction.

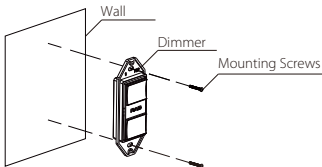


# Installing your Lightcloud Blue Device

(cont'd)

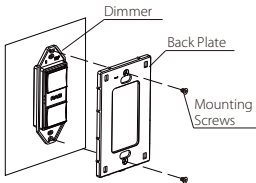
## ② Install directly to wall

- Secure the Self-Powered Dimmer to the wall with the provided mounting screws provided.



## ③ Install the Wall Plate

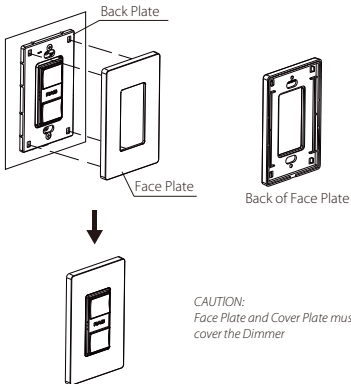
- 3a** • Fit the back plate over the Dimmer and secure to the Dimmer using the provided mounting screws.



# Installing your Lightcloud Blue Device

(cont'd)

- 3b • Connect the face plate to the installed back plate and gently push it into place until it clicks.





# Controlling your Lightcloud Blue Device

- 1 Confirm you have a compatible proxy device paired to the Area.
- 2 Open the DEVICES tab and press +ZDIMSP.
- 3 Scan the QR code on the back of the Self-Powered Dimmer.
- 4 Press any button on the Dimmer to wake up.
- 5 Select the Area to assign the Dimmer.
- 6 You're all set!



*Check out the Lightcloud Blue  
Mobile App User Guide  
for more information on  
how to maximize your system*

# Functionality

## Configuration

All configuration of Lightcloud Blue products is performed using the Lightcloud Blue app.

## Emergency default

If communication is lost, the Lightcloud Blue Self-Powered Dimmer may fall back to a specific state, such as turning the Lightcloud Blue lights on.

## RF EXPOSURE STATEMENT

*This equipment complies with the FCC RF radiation exposure limits set forth for an uncontrolled environment. This equipment should be installed and operated with a minimum distance of 20cm between the radiator and any part of your body.*

### *FCC Information:*

*This device complies with Part 15 of the FCC Rules. Operation is subject to the following two conditions: (1) This device may not cause harmful interference, and (2) This device must accept any interference received, including interference that may cause undesired operation. These limits are designed to provide reasonable protection against harmful interference in a residential installation. This equipment generates, uses and can radiate radio frequency energy and, if not installed and used in accordance with the instructions, may cause harmful interference to radio communications. However, there is no guarantee that interference will not occur in a particular installation. If this equipment does cause harmful interference to radio or television reception, which can be determined by turning the equipment off and on, the user is encouraged to try to correct the interference by one or more of the following measures:*

- Reorient or relocate the receiving antenna.*
- Increase the separation between the equipment and receiver.*
- Connect the equipment into an outlet on a circuit different from that to which the receiver is connected.*
- Consult the dealer or an experienced radio/TV technician for help.*

### *FCC CAUTION:*

*Any changes or modifications to this unit not expressly approved by the manufacture could void the user's authority to operate the equipment.*

# Lightcloud®

Lightcloud Blue is a Bluetooth mesh wireless lighting control system that allows you to control RAB's various compatible devices. Each device in a system can communicate with any other device, maximizing the control system's reach. Learn more at [www.rablighting.com](http://www.rablighting.com)

**1(844) LIGHTCLOUD**

1(844) 544-4825

**RAB®**

©2025 RAB LIGHTING Inc.  
Pat. [rablighting.com/ip](http://rablighting.com/ip)  
P- 101920