



Premium, deep regress, field-adjustable 90CRI, downlights



TECHNICAL SPECIFICATIONS

CONSTRUCTION

Housing Material

Metal

Trim Cone Finish

Available in standard white and matte silver

Trim Style

Smooth

Beam Angle

3" : 65°
4", 6" & 8" : 70°

Remote Driver/Junction Box

- Plastic constructed remote junction box
- (4) 1/2" conduit pry-outs
- Lumen and CCT dipswitch mounted on driver box
- Quick disconnect between LED module and driver box
- Driver box can be mounted on top of 4", 6", and 8" LED Modules

Installation

- Installation performed as a stand-alone kit is recommended for hard ceilings.
- Installation of a recessed incandescent frame is recommended for tiled ceiling application.

ELECTRICAL

THD

≤20%

Power Factor

≥0.9

Input Voltage

120-277V

Note

All values are typical (tolerance +/- 10%)

Operating Frequency

50/60Hz

Operating Temperature

-30°C to 40°C

Dimming

0-10V dimming. Dim as low as 10%

PROJECT: _____

DATE: _____

TYPE: _____

PREPARED BY: _____



KEY FEATURES

- High Performance LEDs for commercial application
- Replacement for traditional compact fluorescent recessed downlights
- Deep regress provides great cut off and ultra low glare
- UL wet and Energy star rated
- Meets air-tight requirements
- White and matte silver cone finish with a smooth trim
- Available in 4 color temperatures: 3000K, 3500K, 4000K, 5000K
- 0-10V dimmable down to 10%
- Spring-loaded retention clips
- 25-inch flexible conduit
- 5-Year, No-Compromise warranty

COMPLIANCE

Safety Listing

UL Listed, UL Classified

Environment/Fixture Rating

Suitable for use in dry and wet locations

Air Tight

Airtight per ASTM-E283-04

IC Rating

3" & 4" Models only

Energy Star certified

Yes

T24 JA8 Compliant

Can be used to conform with the requirements of California Title 24 Part 6.

Lawful for sale in California

Yes

FCC

Complies with Part 15 of the FCC Rules.

RoHS

Mercury and UV free. RoHS-compliant components.

CONTROLS

Dipswitch mounted on junction box for Output and CCT selection

TECHNICAL SPECIFICATIONS CONT.

OTHER

Warranty

RAB warrants that our LED products will be free from defects in materials and workmanship for a period of five (5) years from the date of delivery to the end user, including coverage of light output, color stability, driver performance and fixture finish.

RAB warranty is subject to all terms and conditions found at: rablighting.com

PERFORMANCE

Lifespan

50,000-hour LED lifespan based on IES LM-80 results and TM-21 calculations

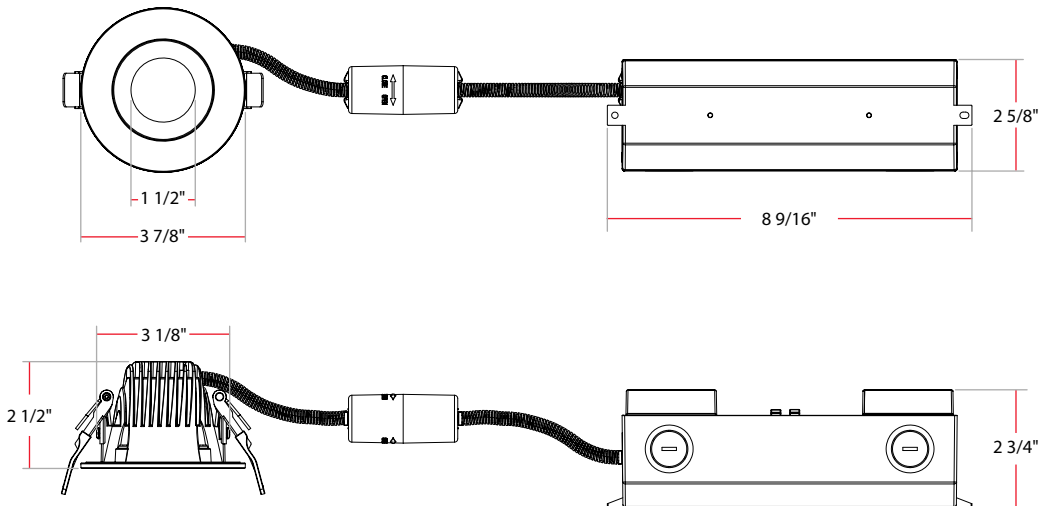
Emergency Battery Back up

Optional field installable emergency back up driver available.

DIMENSIONS

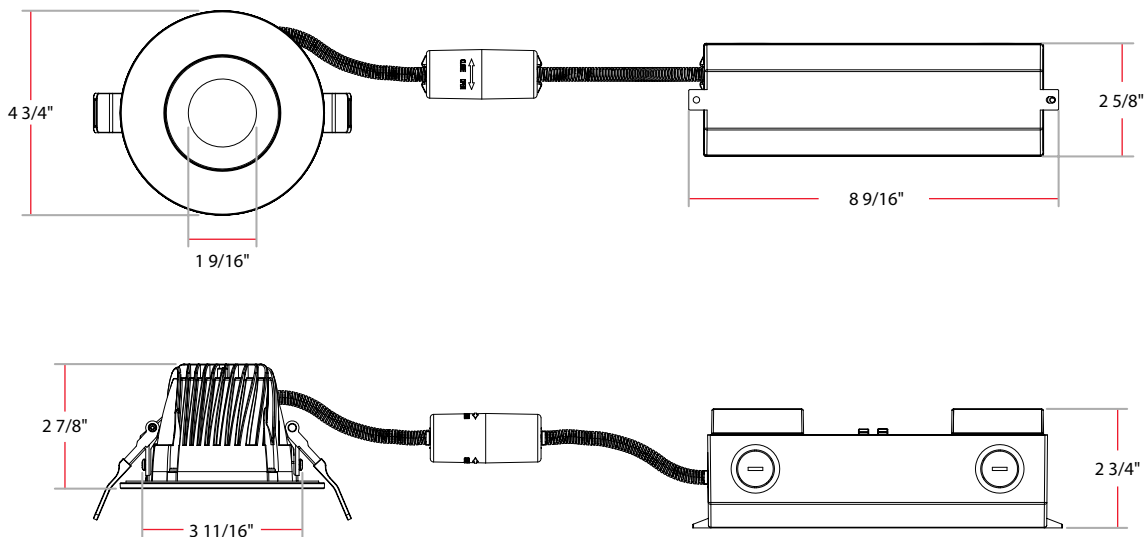
3" Round

Weight: 1.0 lb



4" Round

Weight: 1.4 lbs



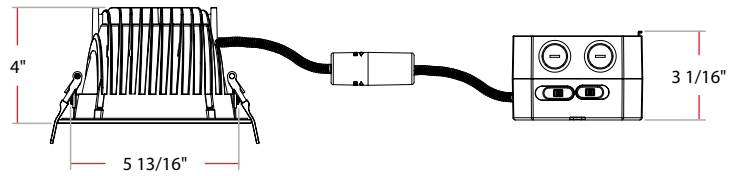
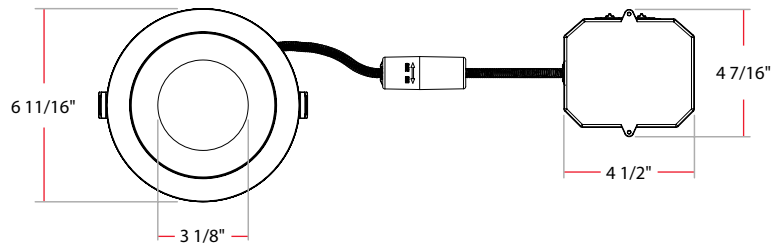
Field-Adjustable Deep-Regress Commercial Downlight



DIMENSIONS

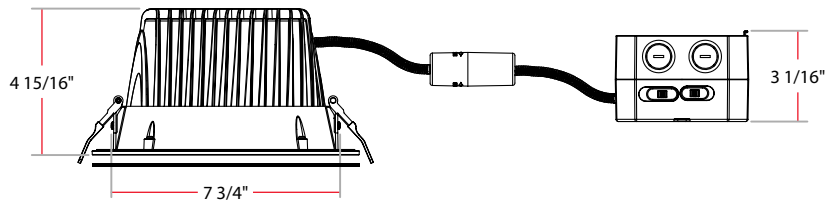
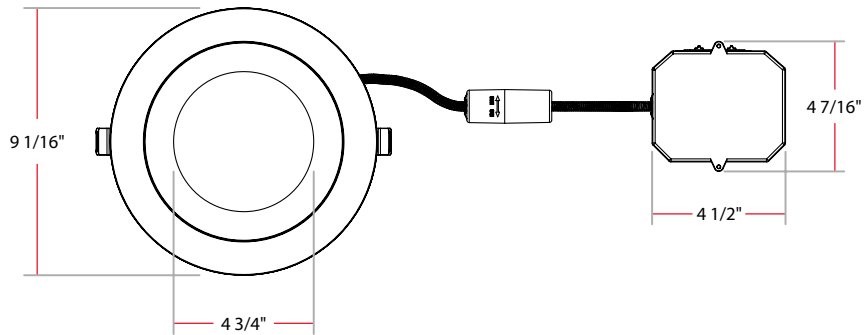
6" Round

Weight: 2.3 lbs



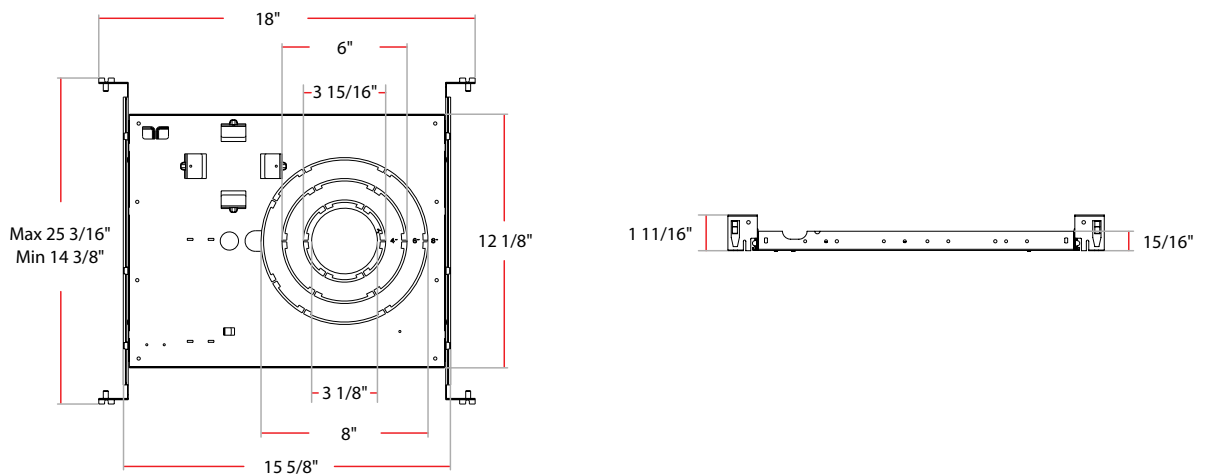
8" Round

Weight: 3.4 lbs



New Construction Mounting Plate (Rough In)

Weight: 2.2 lbs



PERFORMANCE

	3" WHITE	3" MATTE SILVER	4" WHITE	4" MATTE SILVER
INPUT WATTAGE	5.5/7.8/8.5	5.5/7.8/8.5	8/10/11	8/10/11
LUMEN	430/550/650	380/500/600	650/750/850	500/600/700
LM/W	78/78/76	69/71/70	81/75/77	63/60/64
CRI	90	90	90	90
EQUIVALENCY	13W CFL		18W CFL	
COLOR TEMPERATURE	3000K / 3500K / 4000K / 5000K			

	6" WHITE	6" MATTE SILVER	8" WHITE	8" MATTE SILVER
INPUT WATTAGE	12/18/24	12/18/24	34/46/59	34/46/59
LUMEN	1000/1500/2000	800/1200/1600	3000/4000/5000	2400/3200/4000
LM/W	83/83/83	67/67/67	88/87/85	71/70/68
CRI	90	90	90	90
EQUIVALENCY	1X26W/1X32W/2X26W CFL		2X42W CFL / 1X57W CFL / 1X175W MH	
COLOR TEMPERATURE	3000K / 3500K / 4000K / 5000K			

ORDERING MATRIX

COMMERCIAL PREMIUM DEEP REGRESS

Family	Size-Shape	Wattage	CRI - Color Temperature	Voltage Rating	Fixture Finish
C			9FA	UNV	
3R	3" Round	For 3" Round 5.5/7/8.5	9FA 90CRI Field Adjustable CCT (3000K/3500K, 4000K, 5000K)	UNV 120-277V	W M White Matte Silver
4R	4" Round	Adjustable to: 5.5W, 7W, 8.5W			
6R	6" Round	For 4" Round 8/10/11			
8R	8" Round	Adjustable to: 8W, 10W, 11W			
		For 6" Round 12/18/24			
		Adjustable to: 12W, 18W, 24W			
		For 8" Round 34/46/59			
		Adjustable to: 34W, 46W, 59W			